

Program Basics and Roles



Producers' role:

- Design and choose packaging produced
- Report to the SO on packaging produced
- Provide payment to the SO for packaging produced and not managed through an alternative collection program
- May manage packaging through an alternative collection program
- May apply for investments in infrastructure and education

Stewardship organization's role:

- Determine producer payments, according to rule
- Calculate municipal reimbursement, according to rule
- Assist producers and municipalities
- Manage the stewardship fund
- Conduct material audits
- Conduct audits of producer reporting
- Conduct cost studies with participating municipalities and their contractors
- Produce program reports and assessments
- Evaluate and propose investments
- Collect stakeholder feedback on investments,

the definition of similar municipalities, and the packaging material types list

DEP's role:

- Provide compliance assistance
- Provide oversight and enforcement
- Coordinate municipal reporting with other state reports
- Evaluate and approve investments
- Make decisions and adjust program rules
- Provide outreach and education

Participating municipalities' role:

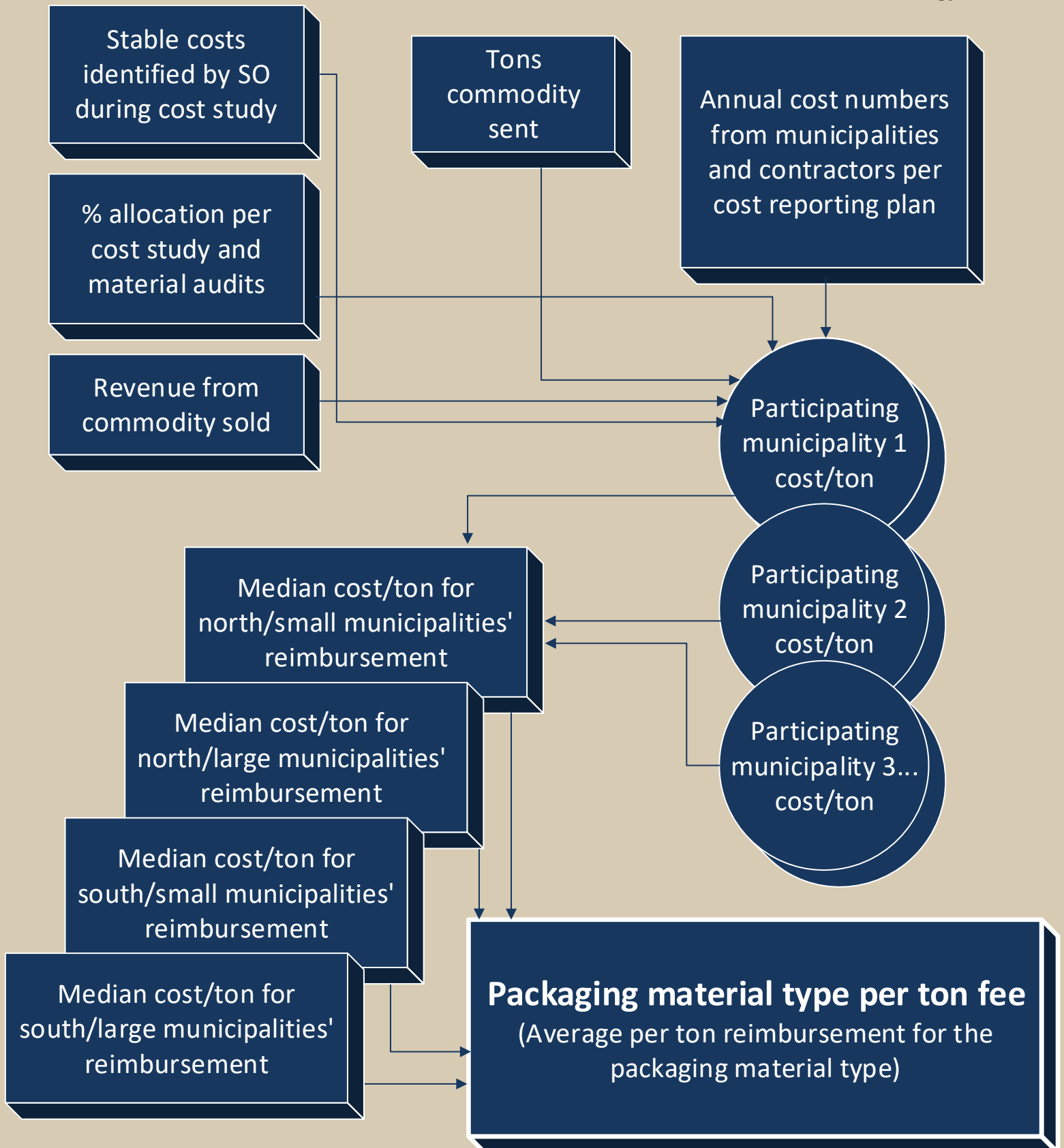
- Provide for the collection and recycling of readily recyclable packaging
- Report on costs and tons sent
- May participate in alternative collection programs
- May apply for investments in infrastructure and education

Recycling system's role:

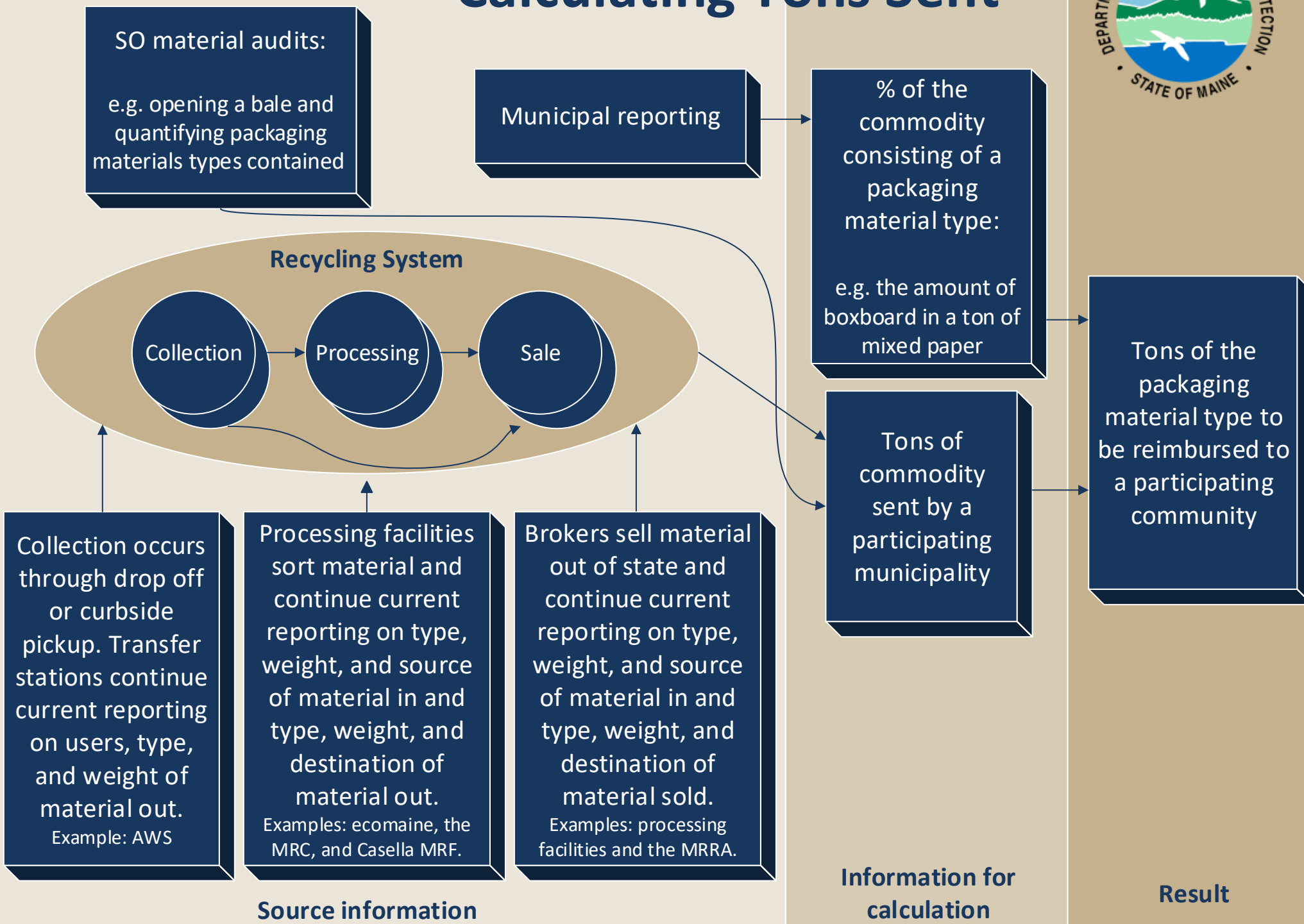
- May report information on costs and tons sent on behalf of participating municipalities
- May apply for investments in infrastructure and education
- May participate in alternative collection programs



Calculating Packaging Material Type Fees and Municipal Reimbursements



Calculating Tons Sent





Packaging Material Movement and Municipal Reimbursement

⊗ not reimbursable

✓ reimbursable

