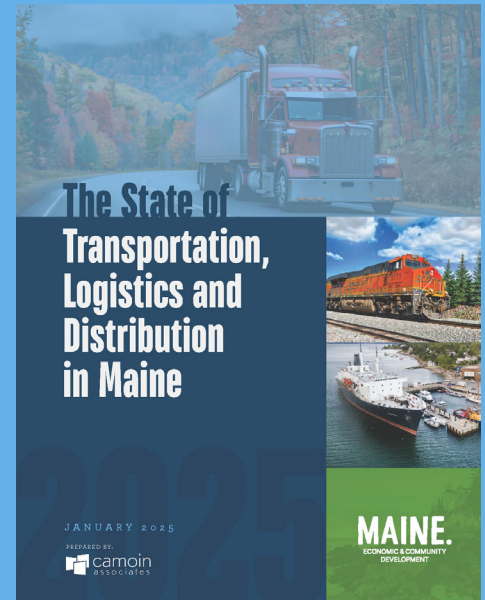


KEY FINDINGS

The State of Transportation, Logistics, & Distribution in Maine

The *State of Transportation, Logistics, and Distribution* (TWL) in Maine examines how the state's logistics system supports domestic trade and economic activity. The analysis highlights current performance, infrastructure conditions, and freight movement patterns, while identifying practical opportunities to strengthen in-state capacity and improve Maine's connectivity to regional and national markets.



1 | Maine's logistics sector plays an important supporting role in the economy, with a clear opportunity to expand in-state capacity and capture more demand.



16,000+ jobs in the TWL sector



\$4.7 billion in total demand



1,400+ establishments statewide



\$1.47 billion in economic output



42% of demand met in-state



Opportunity to grow local capacity and reduce reliance on external providers.

2 | Maine relies on a multimodal transportation system to move goods, with each mode playing a distinct role in supporting industry needs.

TRUCKING

Carries 84% of domestic export tonnage and 98% of intrastate flows

RAIL

1,400+ miles of track
4.7 million tons moved annually

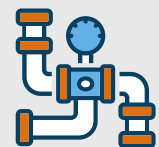
PORTS

Portland handles 95% of maritime cargo

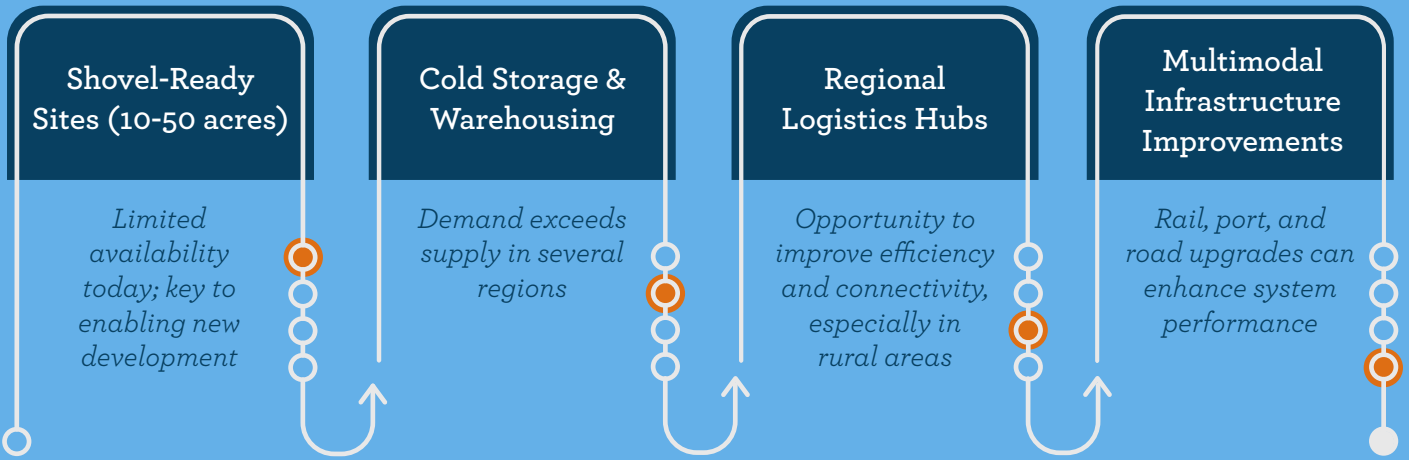


PIPELINES

7.7 million tons of products moved



3 Targeted investments in logistics infrastructure and sites can help Maine better meet demand and support business growth.



4 Maine's opportunity is to strengthen its logistics system to better support businesses, improve efficiency, and capture more economic activity in-state.

Importance of Transportation Modes to Target Industry Sectors

Sector	Highway Accessibility	Accessibility to Airport for Air Freight	Accessibility to Major Airport for Business Travel	Railroad Service	Waterway or Oceanport Accessibility
Clean Energy	Essential	Less Relevant	Advantageous	Important	Important
Forestry & Forest Products	Essential	Less Relevant	Advantageous	Essential	Important
Agriculture, Seafood & Food Mfg	Essential	Advantageous	Advantageous	Important	Important
Biomedical Manufacturing	Essential	Important	Important	Advantageous	Advantageous
Logistics, Transportation & Warehousing	Essential	Important	Advantageous	Essential	Essential
Advanced Machinery & Metals Mfg	Essential	Less Relevant	Advantageous	Important	Important
Durable and Nondurable Mfg	Essential	Advantageous	Advantageous	Important	Important
Construction	Important	Less Relevant	Less Relevant	Advantageous	Less Relevant
Retail Trade	Important	Advantageous	Less Relevant	Advantageous	Advantageous
Information Technology	Advantageous	Advantageous	Advantageous	Less Relevant	Less Relevant

Source: Camoin Associates

■ Essential
 ● Important
 ○ Advantageous
 × Less Relevant

Questions?

Please contact **Eric P. Weidman** | Business Development Coordinator