

# THE MAINE ECONOMY AND INTERNATIONAL TRADE (THE PART ABOUT THE ECONOMY)

November 18, 2019

Amanda Rector

Maine State Economist

Department of Administrative and Financial Services

# Overview

2

- Demographics
- Labor force and employment
- Income and GDP
- Macroeconomic outlook

3

# Demographics



# Maine: A Demographic Snapshot

4

- 2018 Population Estimate: 1,338,404
  - 42<sup>nd</sup> largest in US
- 2010 – 2018 Population Change: +0.8%
  - 42<sup>nd</sup> in US (ahead of WV, IL, CT, VT, RI, MS, NY, PA)
- 2018 Median age: 44.9 years
  - Oldest in US
- 93.1% White, Non-Hispanic
  - Highest percentage in US



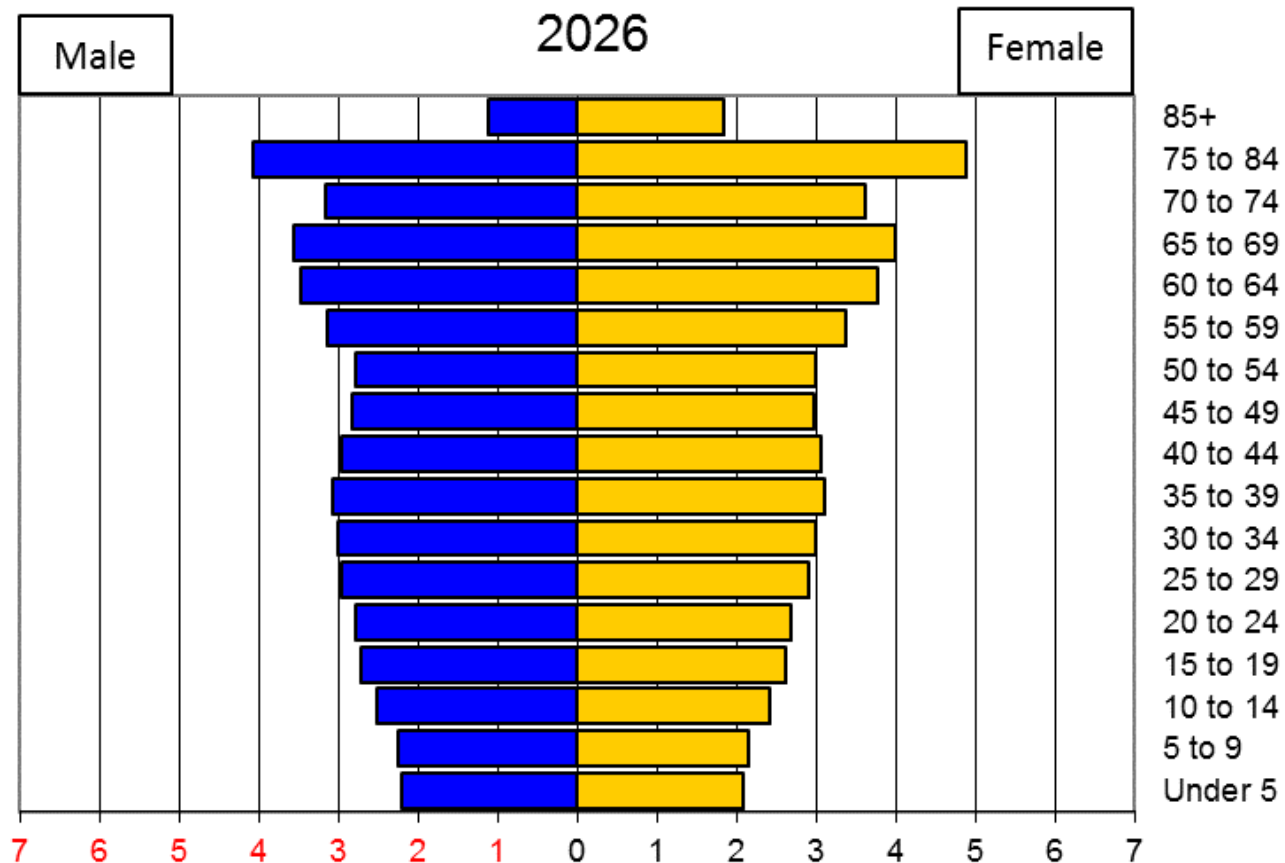
# Improving Population Growth

5

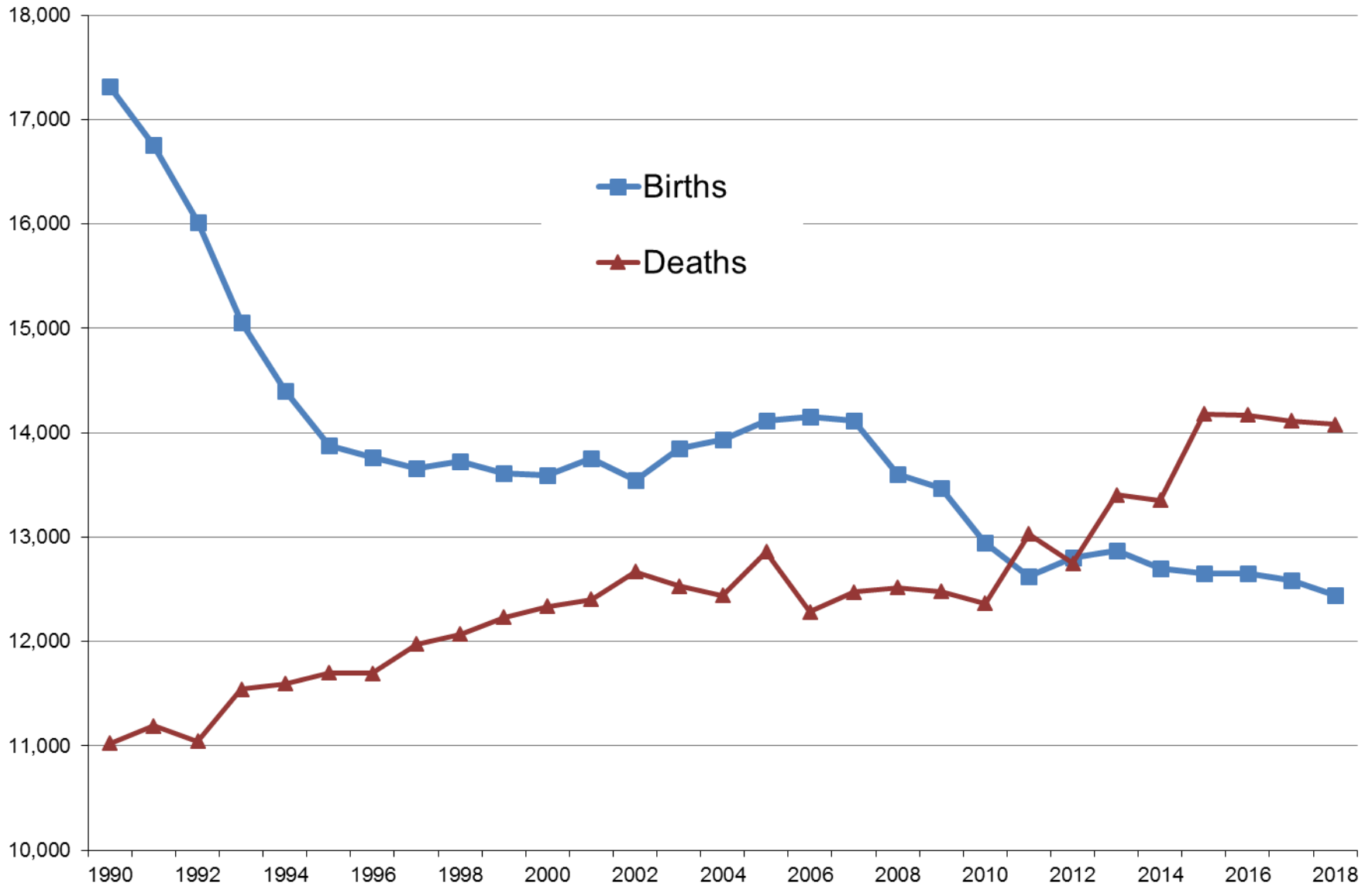
- In 2018, Maine's rate of total population increase ranked 34th and the rate of total net migration ranked 19th in the U.S.
- Other states in the U.S. are starting to see their populations age and in-migration slow
- Maine has been at the leading edge and now other states are catching up

# The Baby Boom Wave

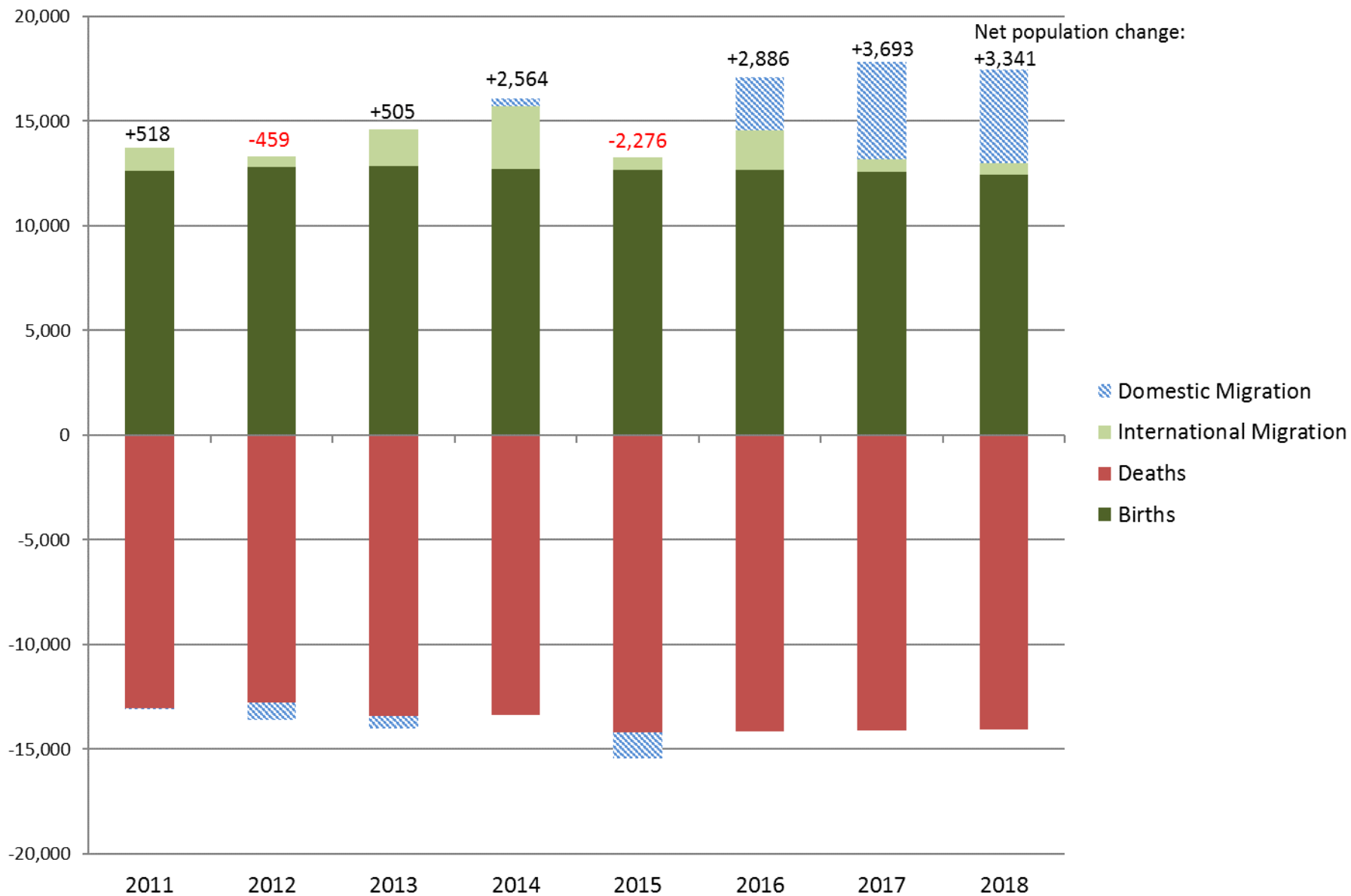
6



# Births and Deaths per year in Maine



# Components of Population Change, Maine



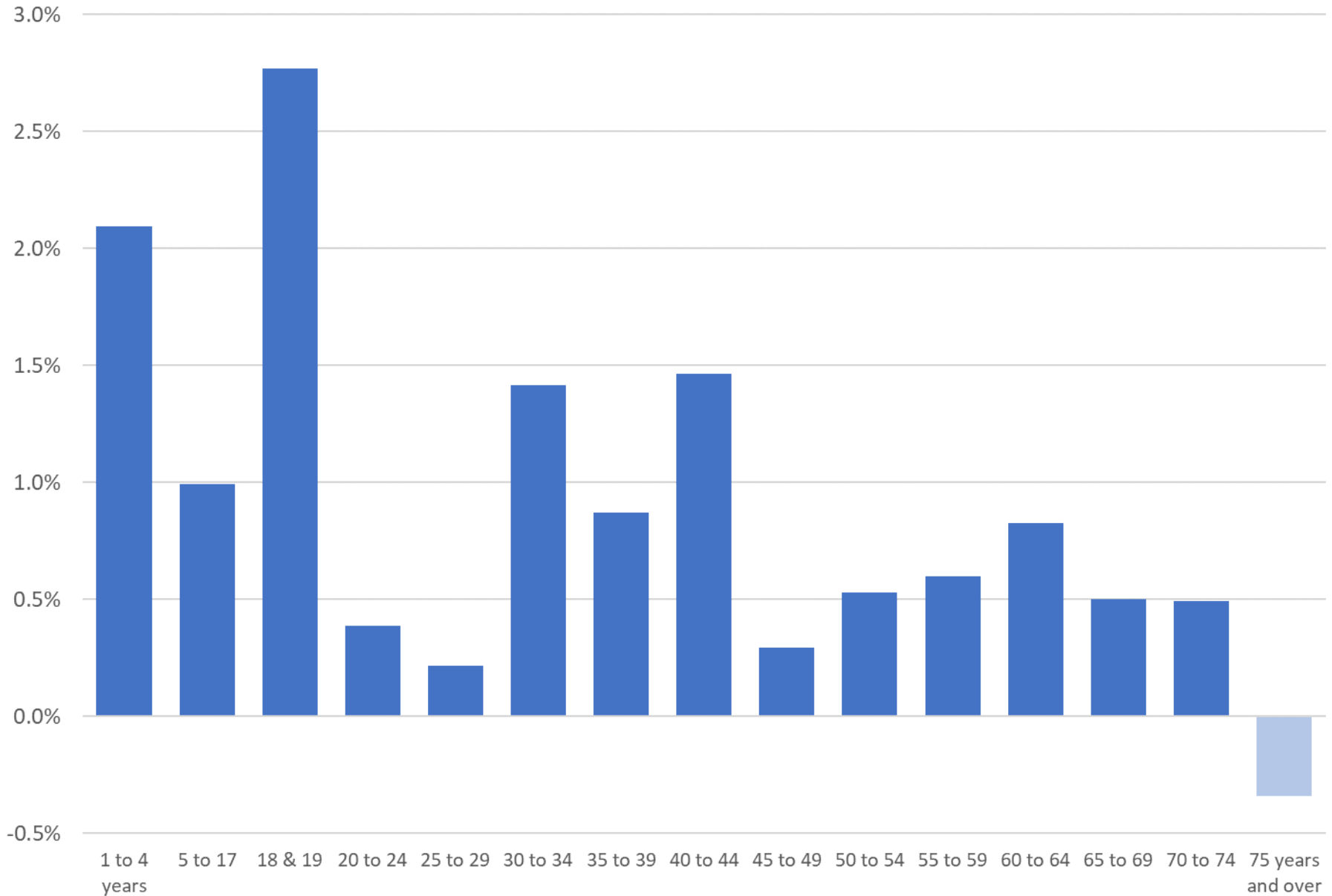


# Where are people moving to/from?

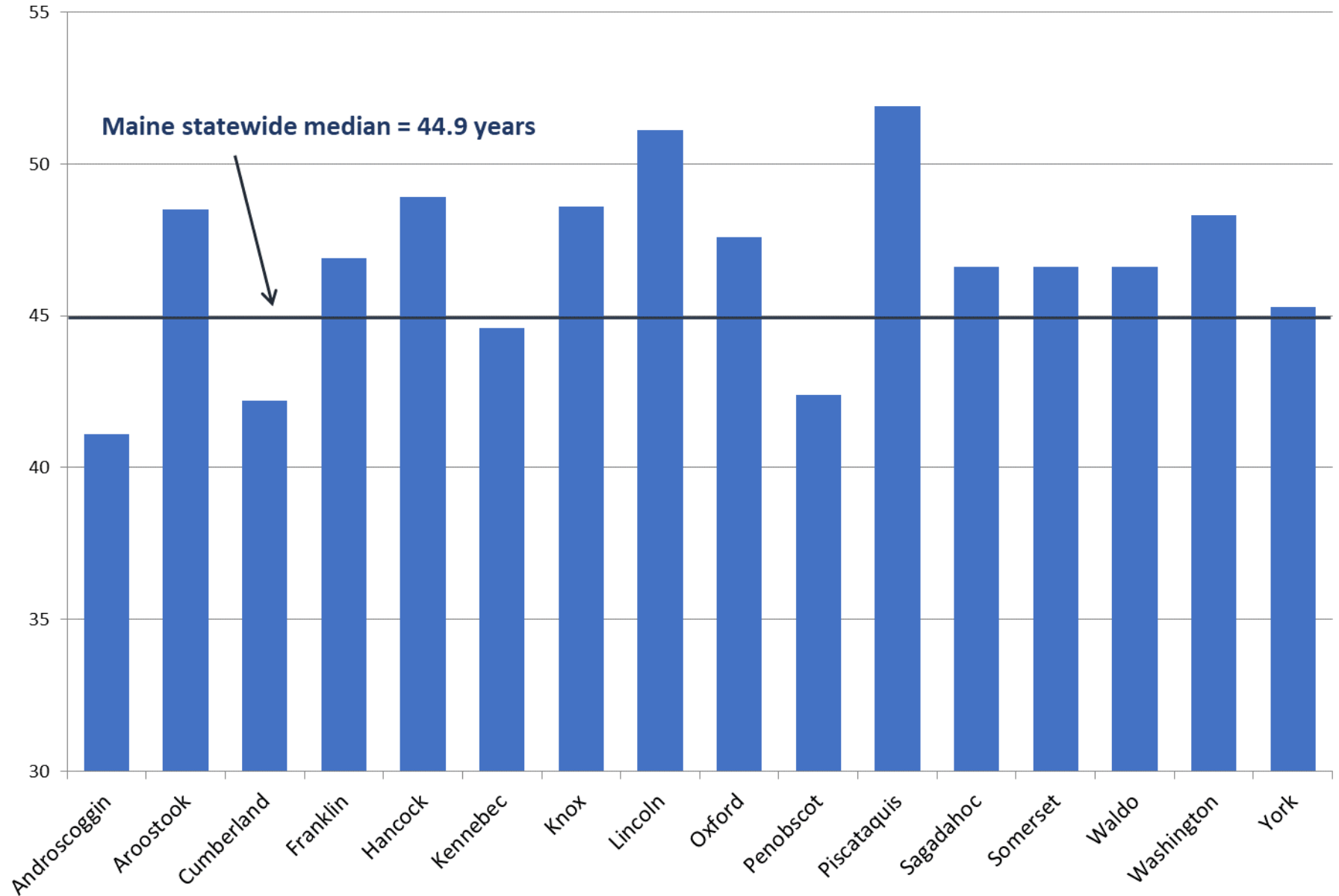
9

2018 State-to-State Migration Patterns			
<i>Moved to Maine from:</i>		<i>Moved from Maine to:</i>	
Massachusetts	5,775	New Hampshire	4,016
New Hampshire	4,731	Massachusetts	3,188
New York	2,909	Florida	2,783
Texas	2,386	Connecticut	1,342
Florida	2,082	California	1,294
Connecticut	1,734	North Carolina	1,235
Pennsylvania	1,393	Maryland	990
Michigan	1,320	Pennsylvania	916
North Carolina	1,049	Colorado	912
Vermont	997	Texas	815

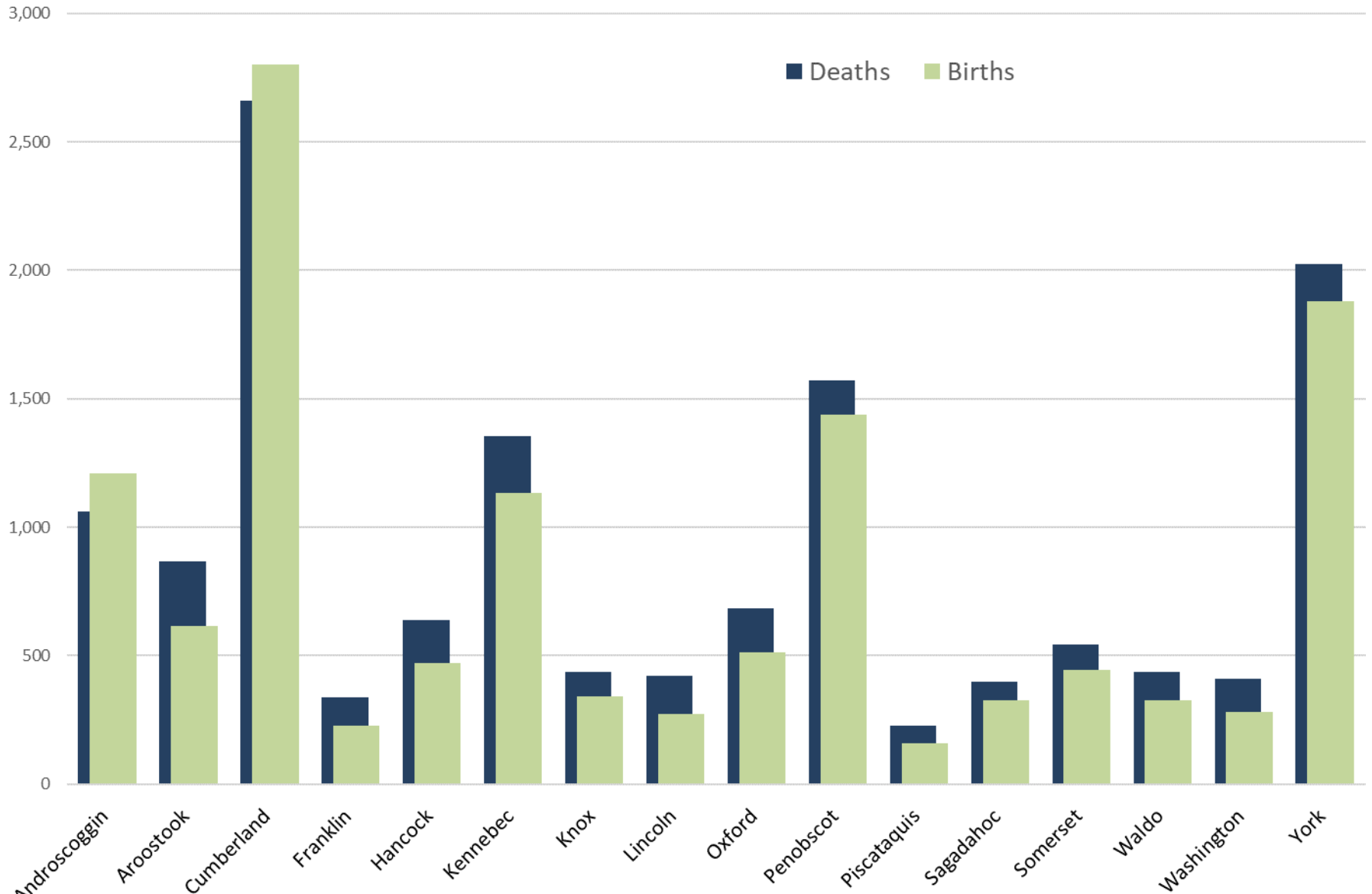
## Annual Domestic Migration Rate by Age, 2018



## Median Age



# Births and Deaths, 2017-2018



# Counties with positive net migration

13

## 2010 - 2018

- Cumberland (10,151)
- York (9,412)
- Hancock (1,408)
- Waldo (1,200)
- Lincoln (1,083)
- Kennebec (1,067)
- Knox (911)
- Oxford (840)
- Sagadahoc (533)

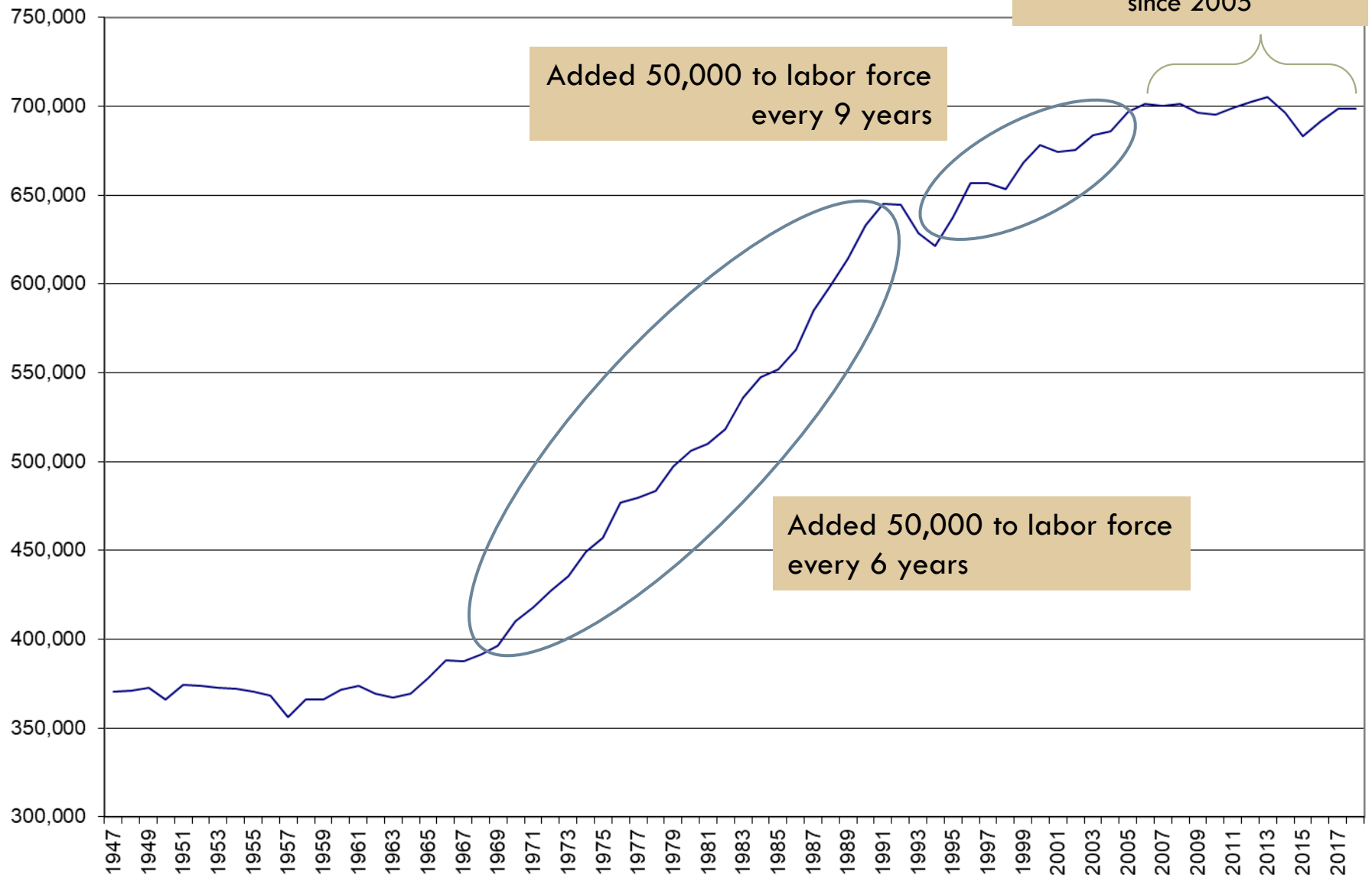
## 2017 - 2018

- York (1,856)
- Cumberland (1,080)
- Kennebec (386)
- Hancock (382)
- Oxford (366)
- Lincoln (304)
- Sagadahoc (288)
- Somerset (273)
- Franklin (155)
- Washington (85)
- Piscataquis (68)
- Penobscot (51)

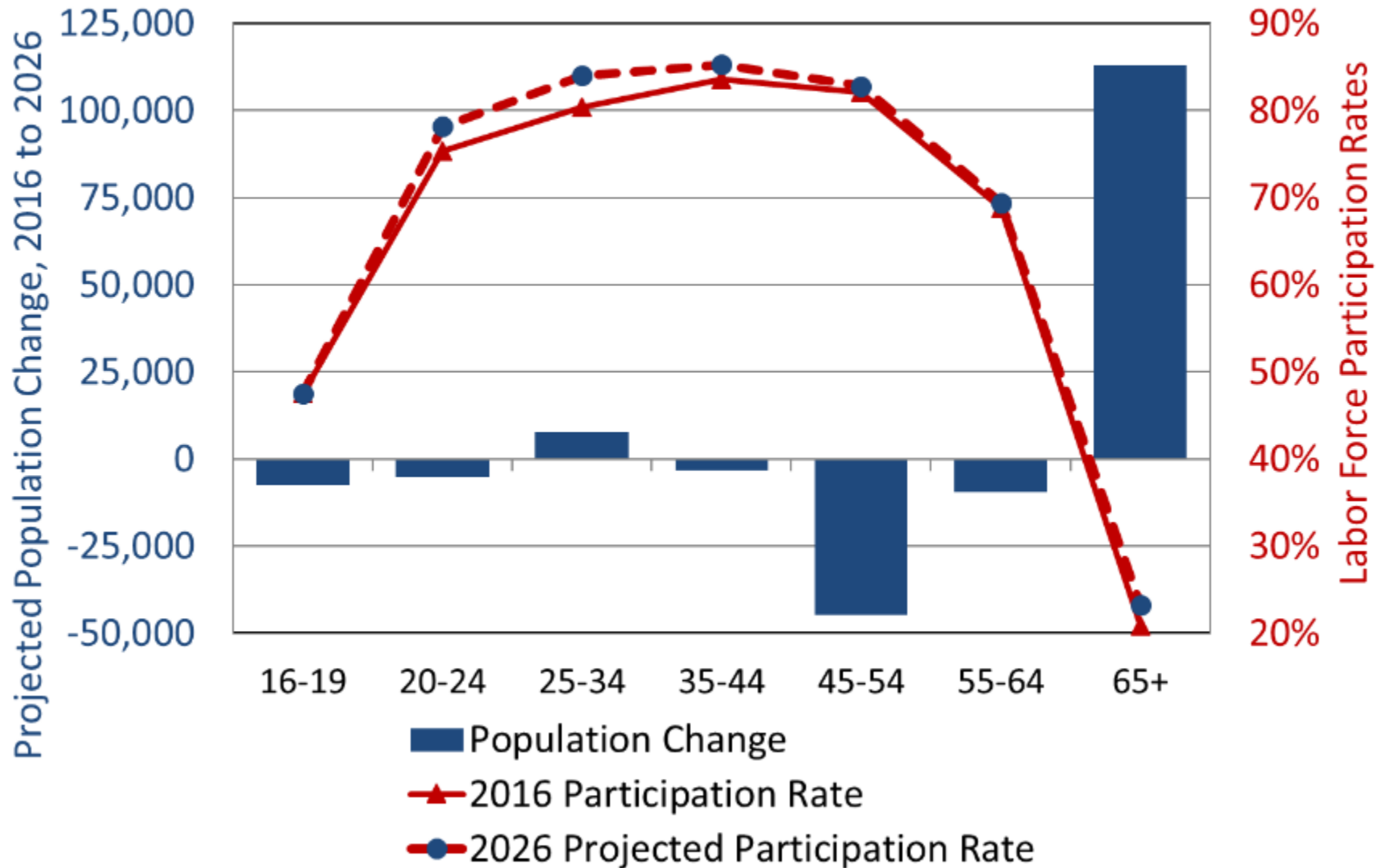
14

# Labor Force and Employment

# Maine Civilian Labor Force

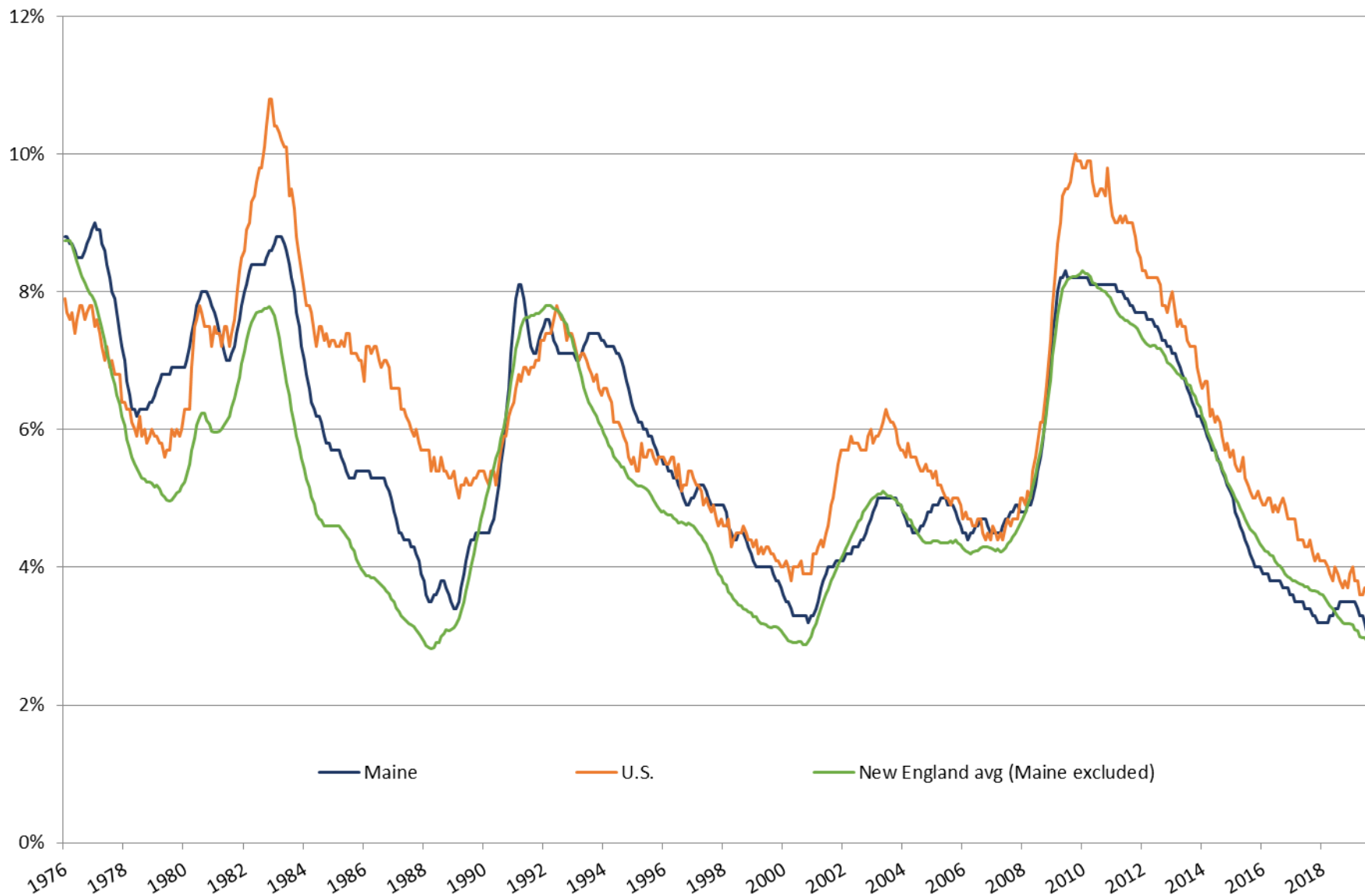


## Projected Population Change and Participation Rates by Age Group in Maine





## Monthly Unemployment Rate (Seasonally Adjusted)



# Regional variations persist in unemployment rates, although all are lower than one year prior

18

## County Rates (not seasonally adjusted)

September, 2019

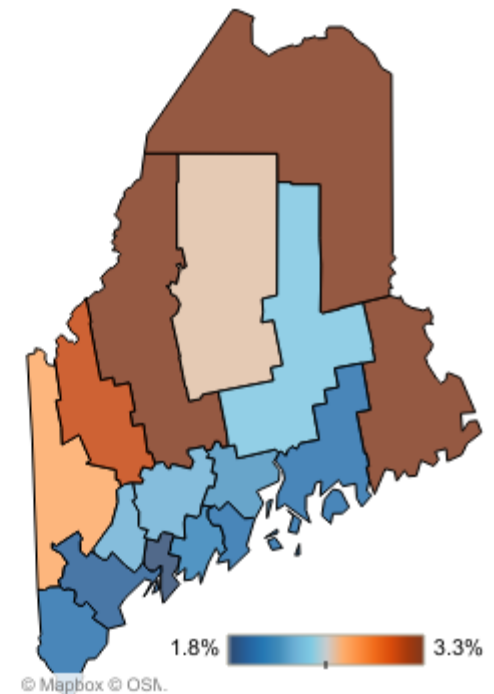
- ☒ Table
- ☐ Graph

### Map/Graph Display

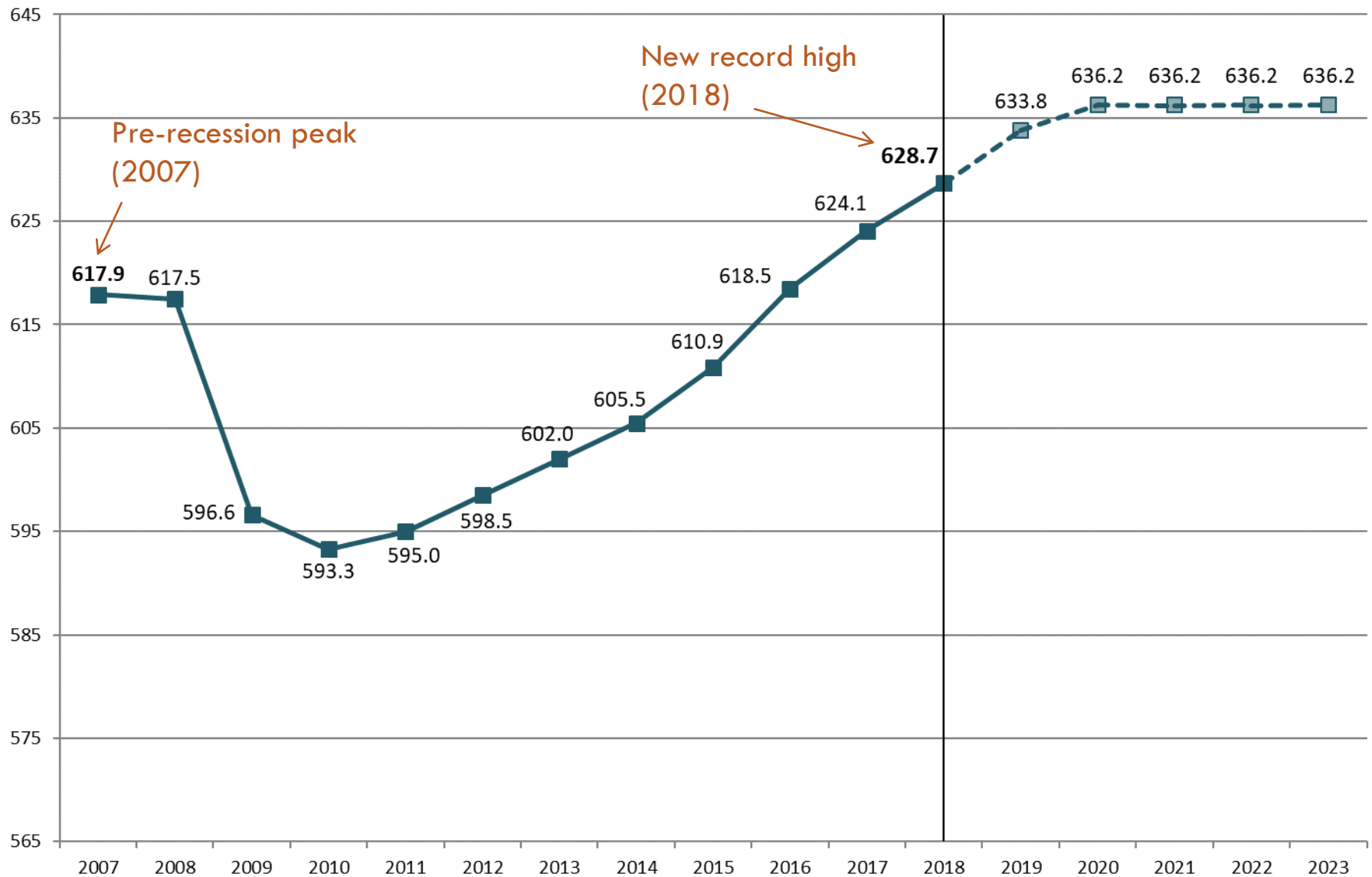
- ☒ Unemployment rate
- ☐ One-year change

County	Rate	Year ago	One-yr change
Maine	2.3%	2.8%	-0.5
Androscoggin Cty	2.3%	3.0%	-0.7
Aroostook Cty	3.3%	3.9%	-0.6
Cumberland Cty	1.9%	2.4%	-0.5
Franklin Cty	3.1%	3.2%	-0.1
Hancock Cty	2.0%	2.3%	-0.3
Kennebec Cty	2.3%	2.8%	-0.5
Knox Cty	2.0%	2.6%	-0.6
Lincoln Cty	2.1%	2.4%	-0.3
Oxford Cty	2.7%	3.7%	-1.0
Penobscot Cty	2.4%	3.3%	-0.9
Piscataquis Cty	2.6%	3.1%	-0.5
Sagadahoc Cty	1.8%	2.3%	-0.5
Somerset Cty	3.3%	4.1%	-0.8
Waldo Cty	2.2%	2.9%	-0.7
Washington Cty	3.3%	4.0%	-0.7
York Cty	2.0%	2.5%	-0.5

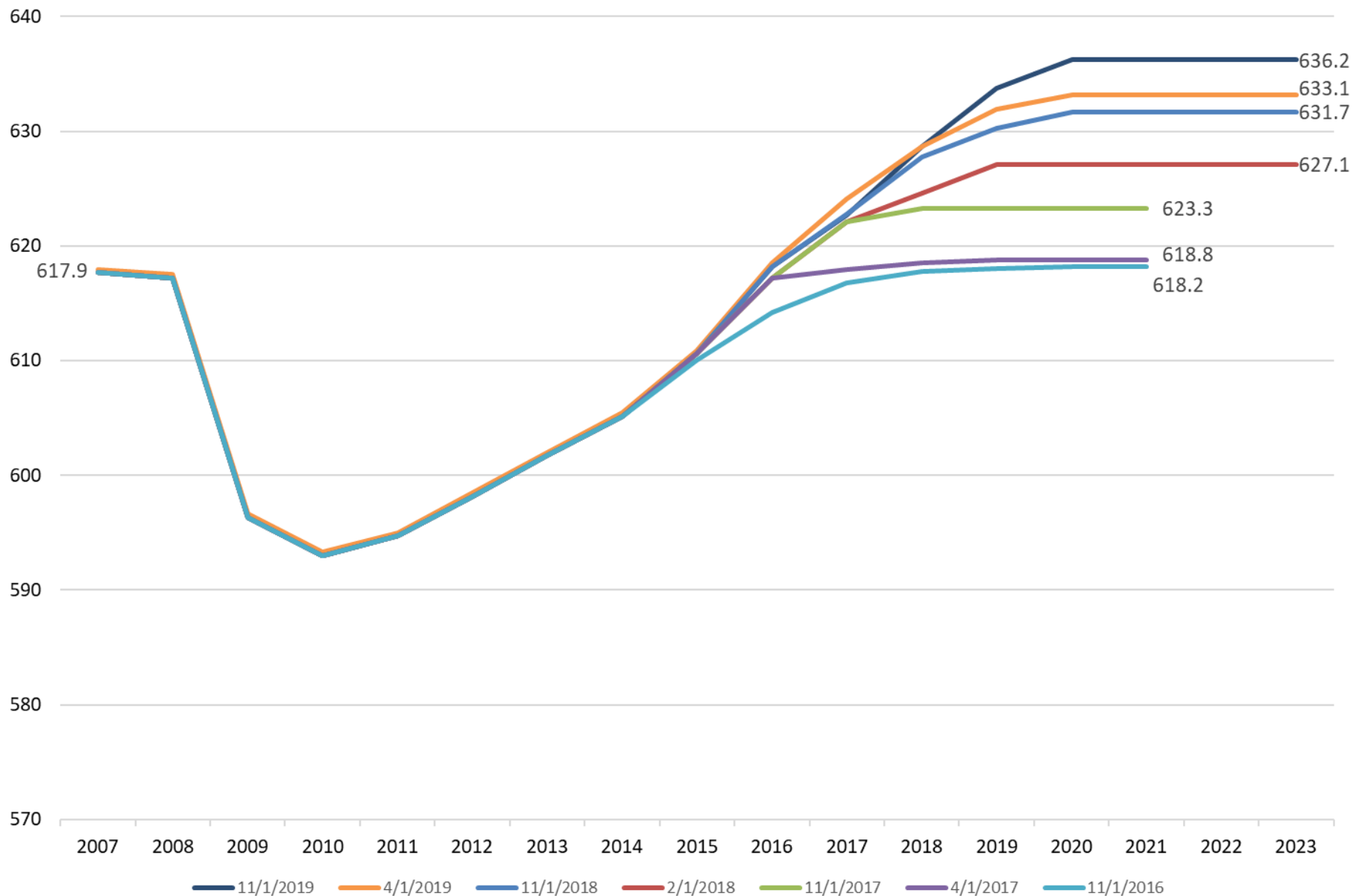
## Unemployment rate



## Total Nonfarm Employment (in thousands) History and CEFC forecast



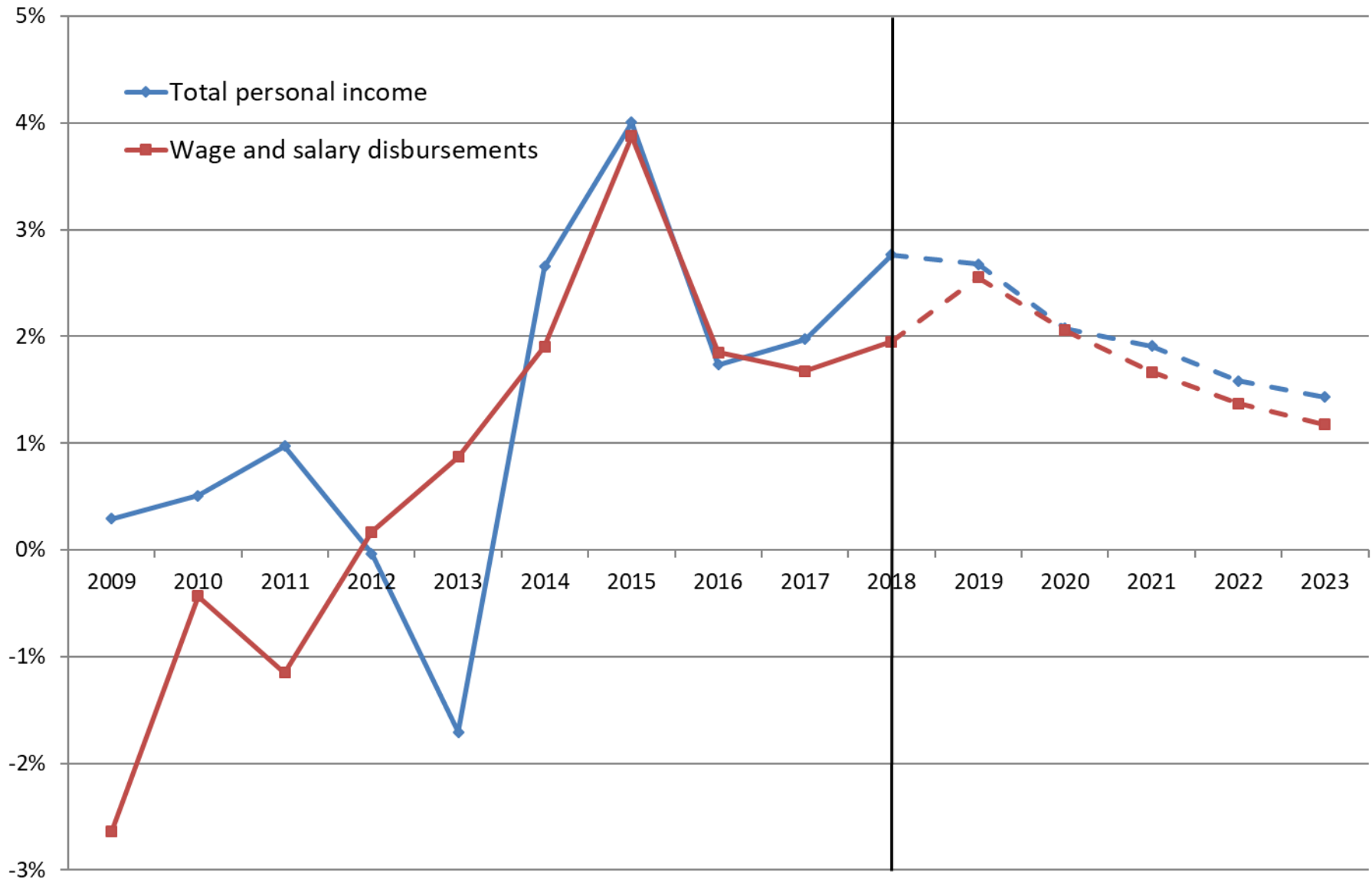
## Revisions to CEFC Forecast of Total Nonfarm Employment (in thousands)



21

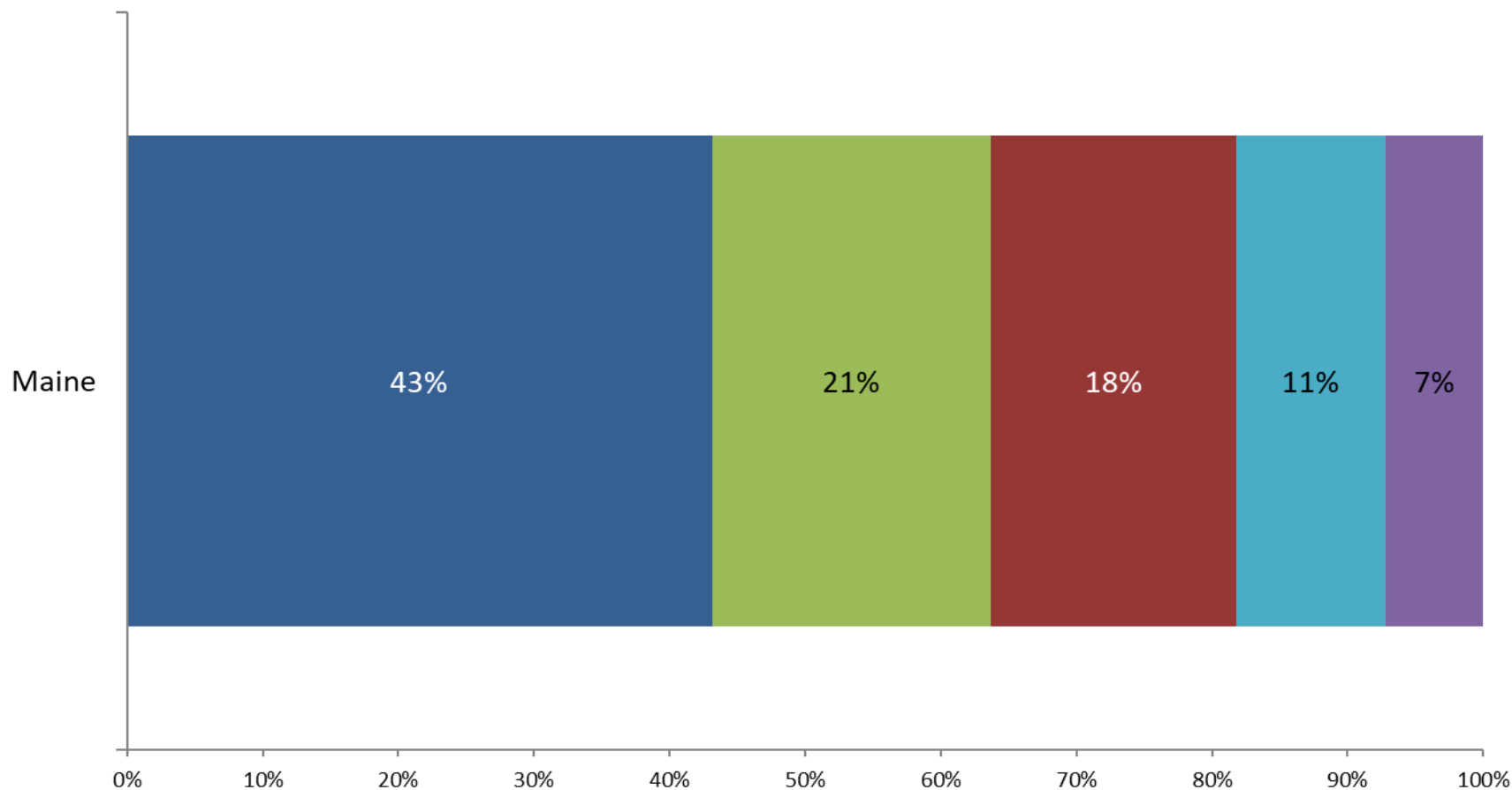
# Income and GDP

## Percent Change in Real Personal Income, Maine 2009-2018 and forecast to 2023

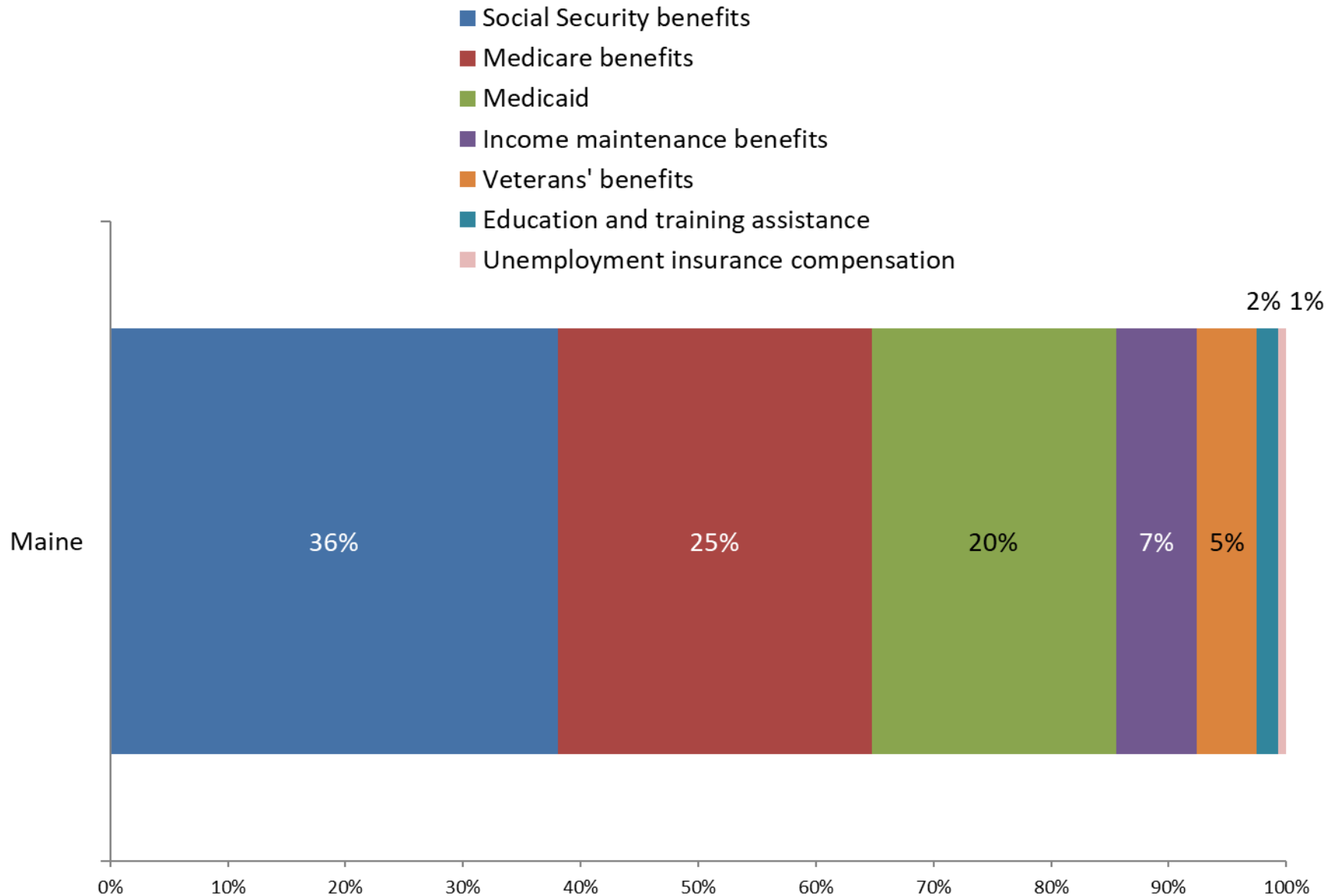


## Major Components of Personal Income, 2018

- Wages and salaries
- Personal current transfer receipts
- Dividends, interest, and rent
- Supplements to wages and salaries
- Proprietors' income



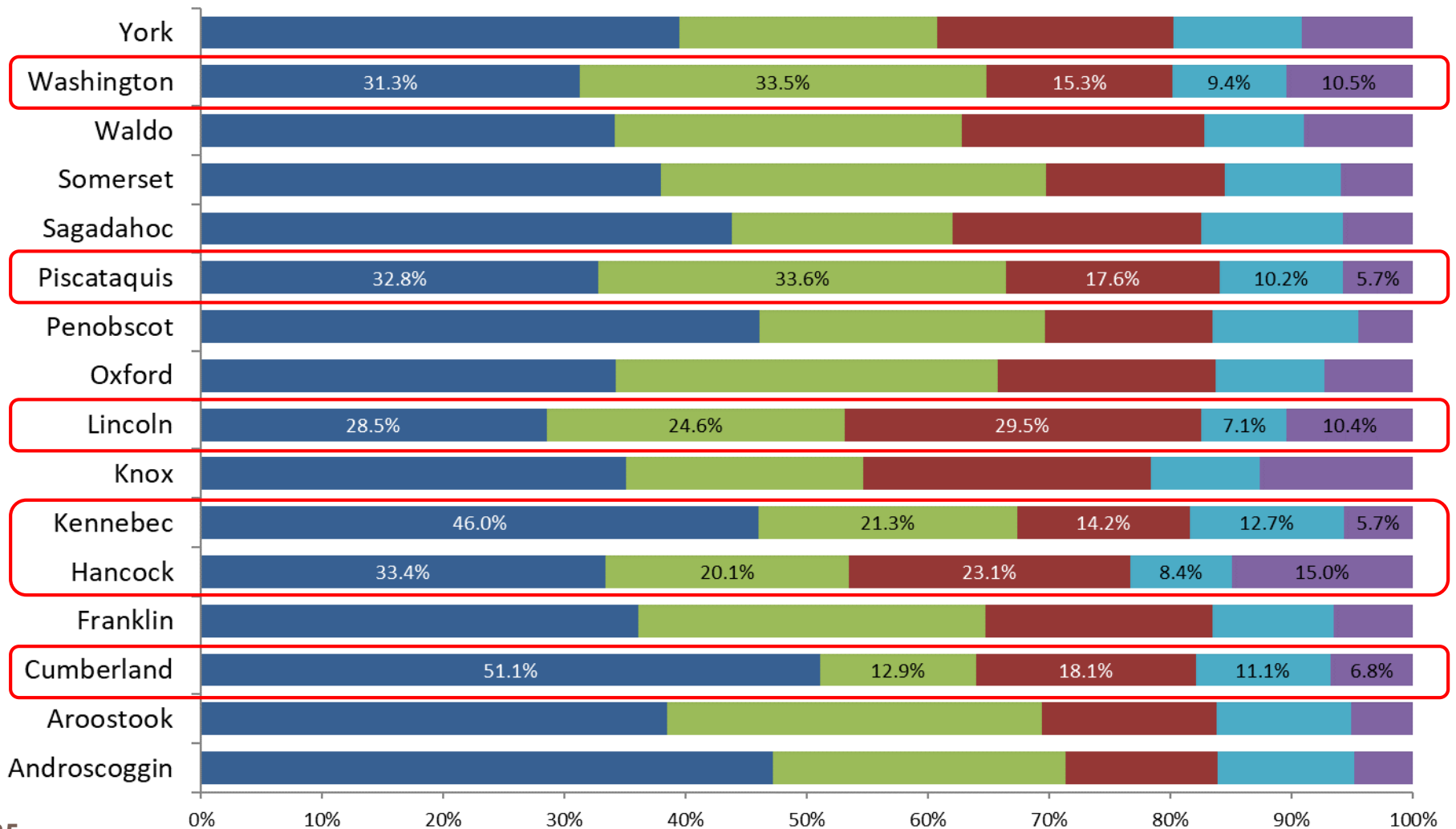
## Components of Personal Current Transfer Receipts, 2018



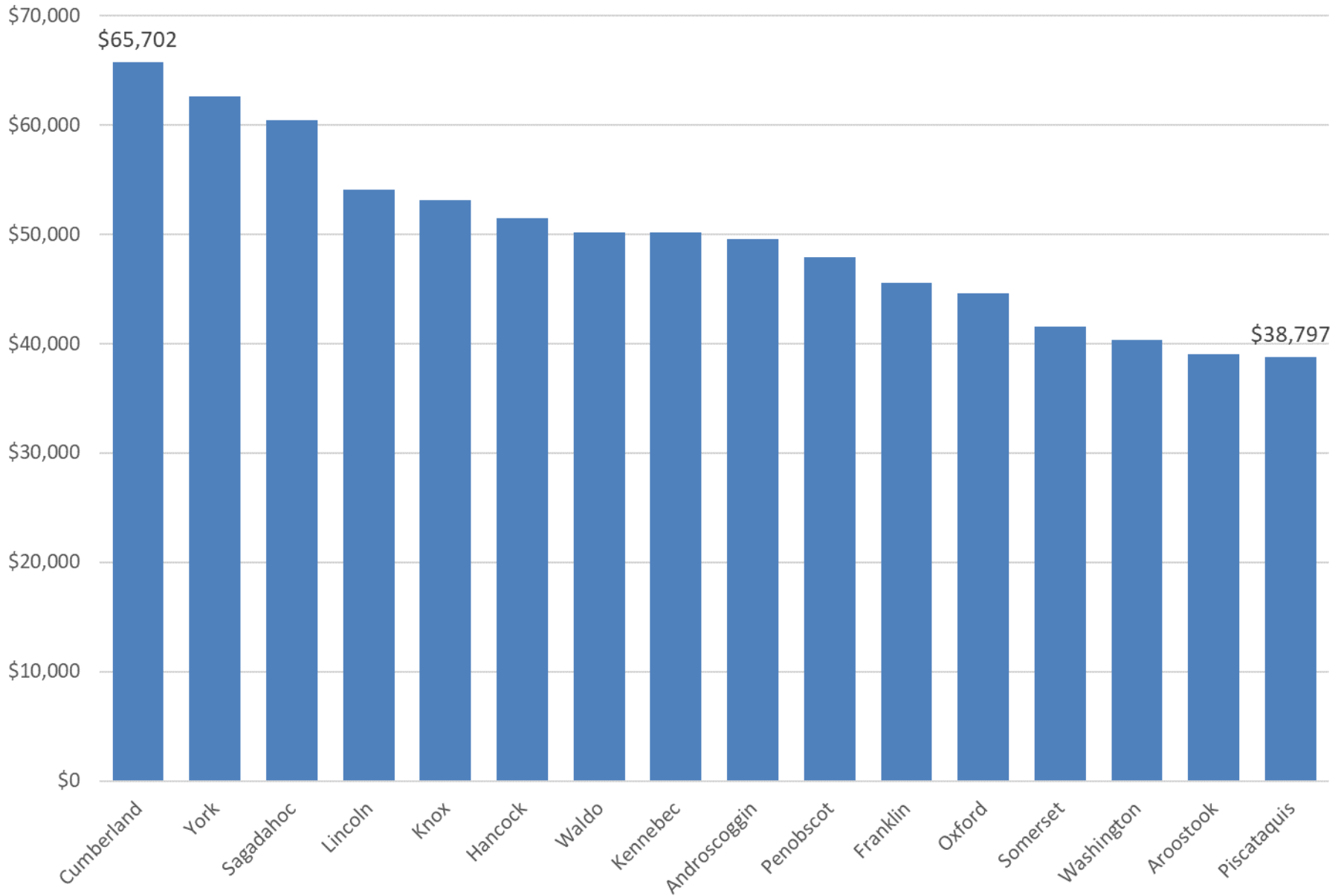


## Major Components of Personal Income, 2017

■ Wages and salaries
■ Personal current transfer receipts
■ Dividends, interest, and rent
■ Supplements to wages and salaries
■ Proprietors' income

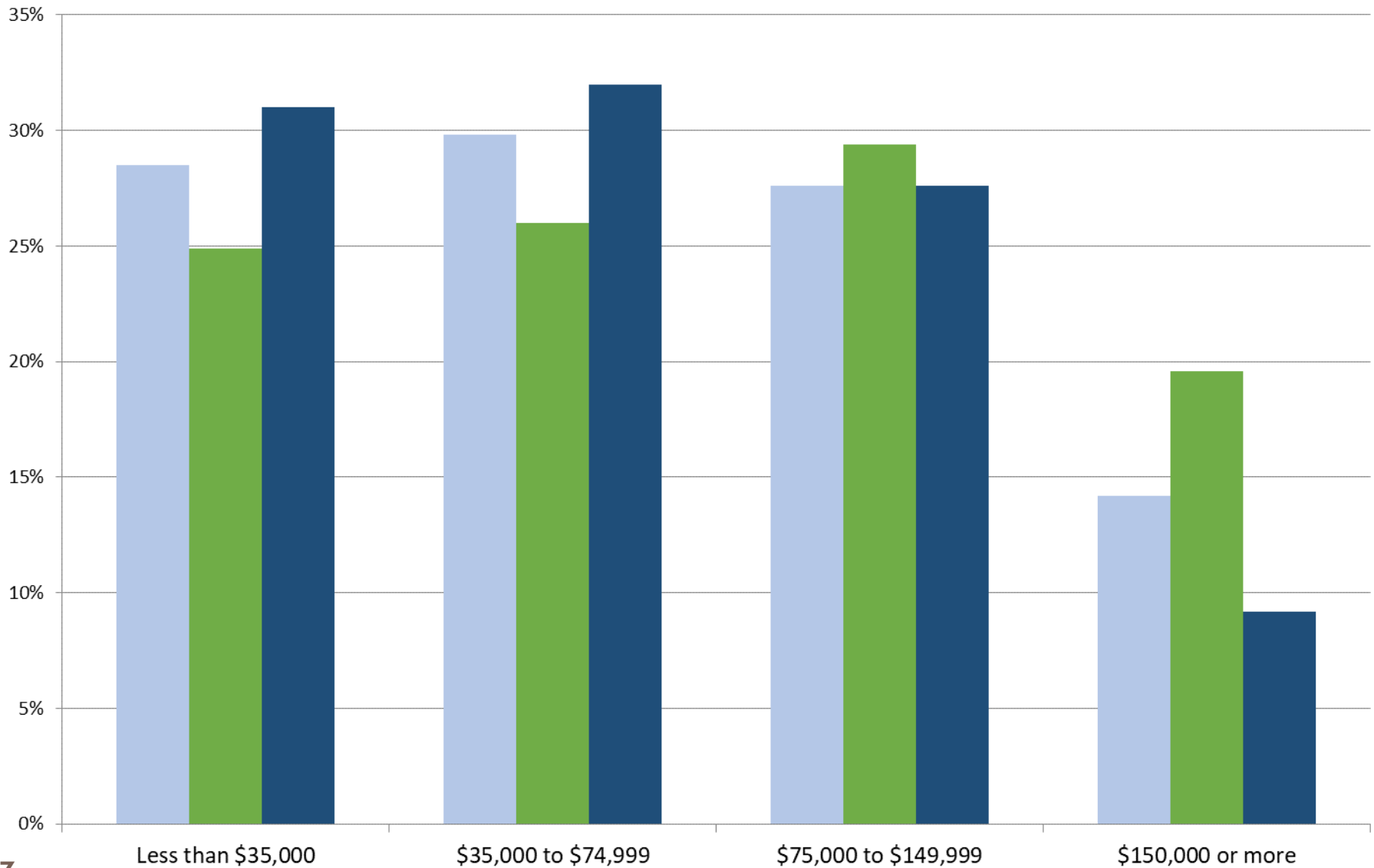


## Median Household Income

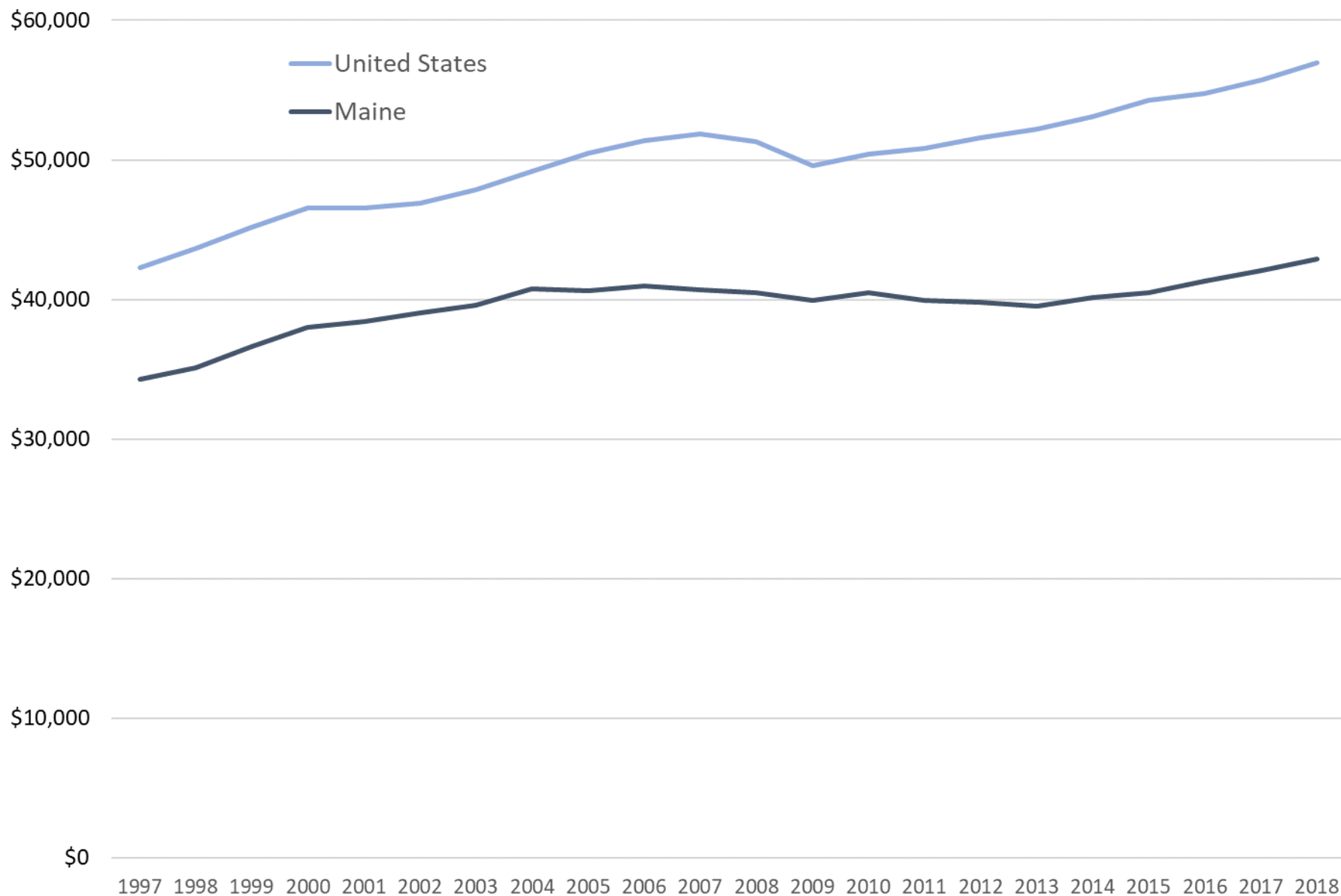


## Percent of Households by Income Level, 2018

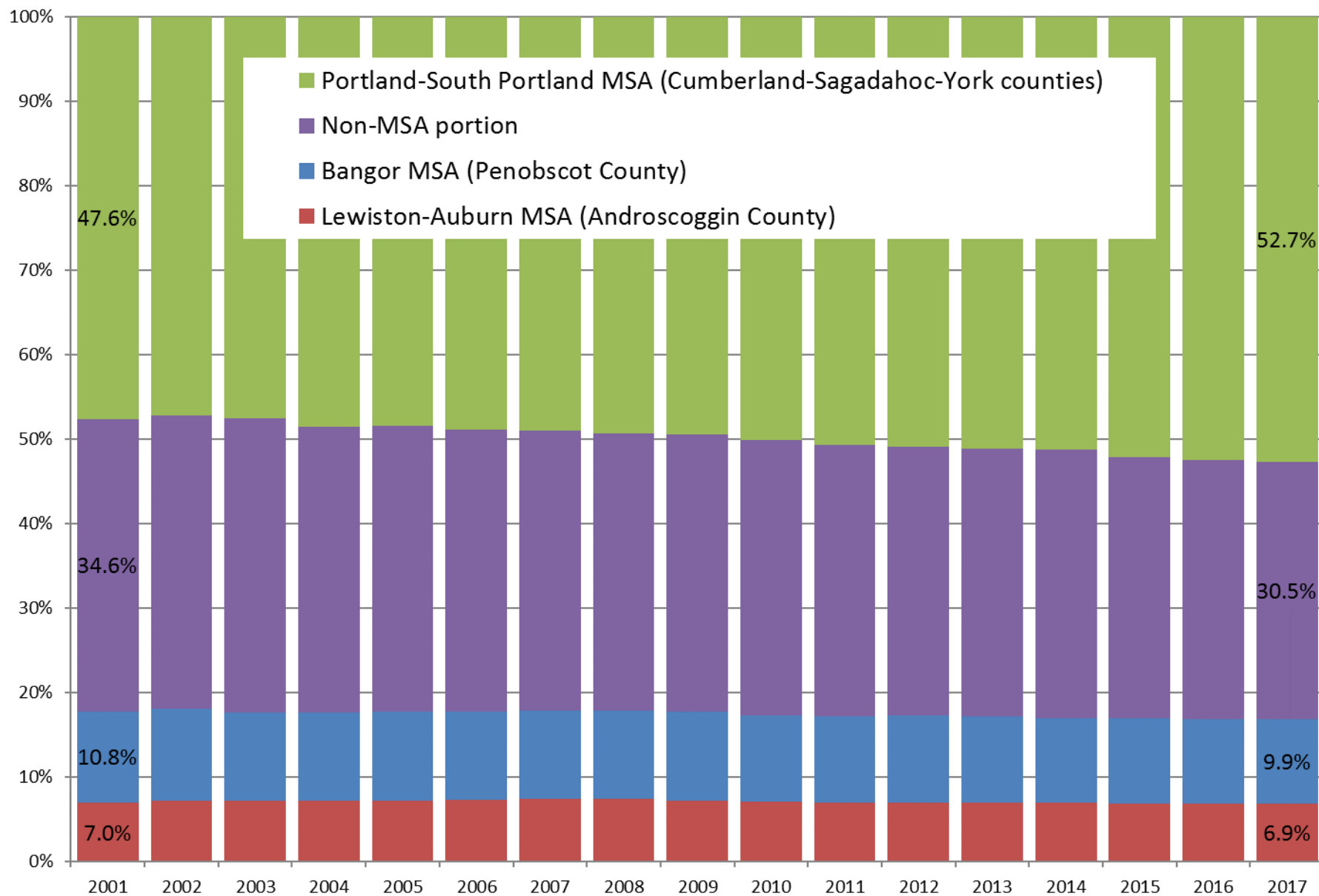
■ U.S. ■ New England ■ Maine



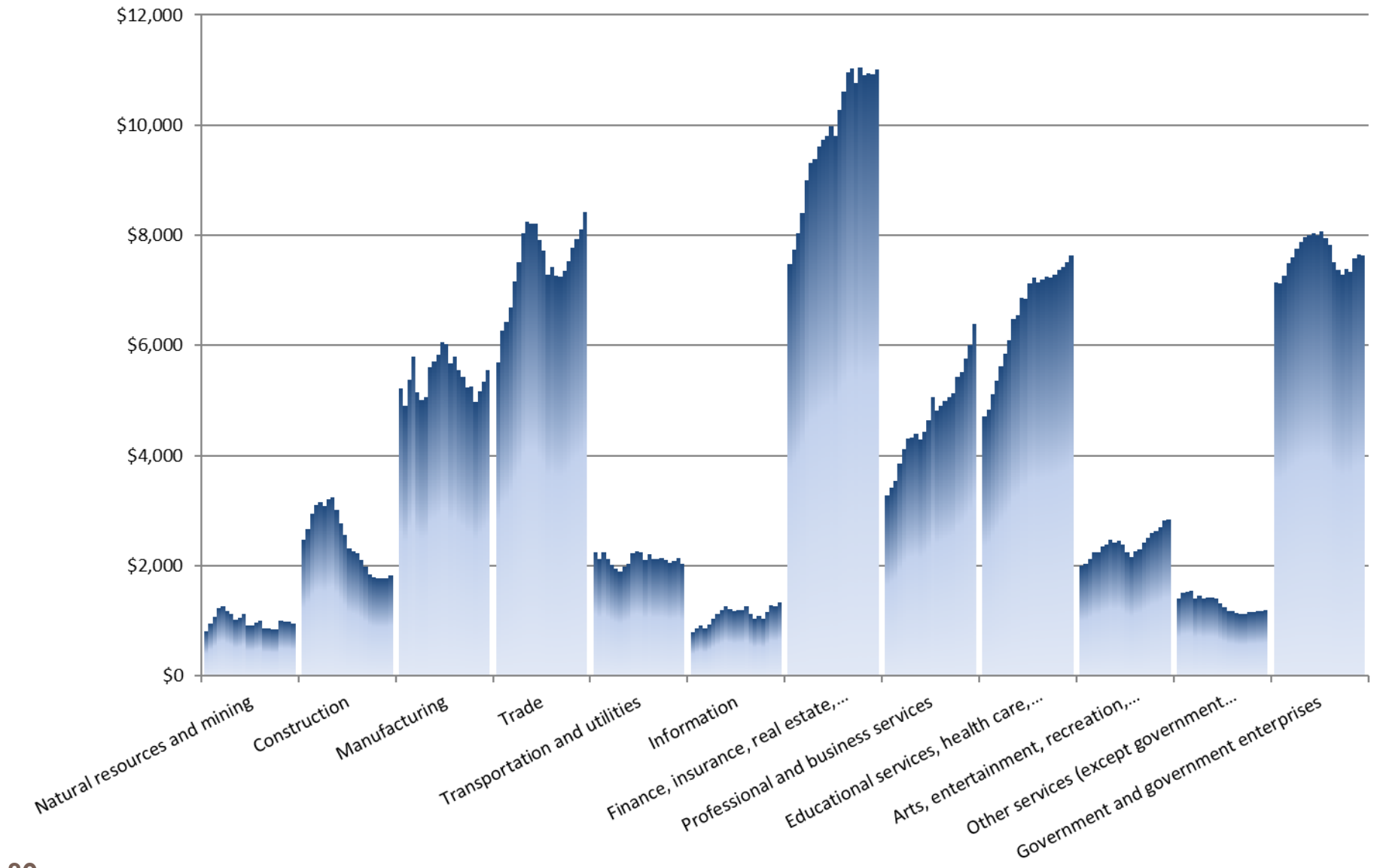
# Per Capita Real Total GDP



## Share of Maine Real GDP by Metropolitan Area



## Maine Real GDP by Industry, 1997-2018 (in millions of chained 2012 dollars)



31

# Macroeconomic Conditions

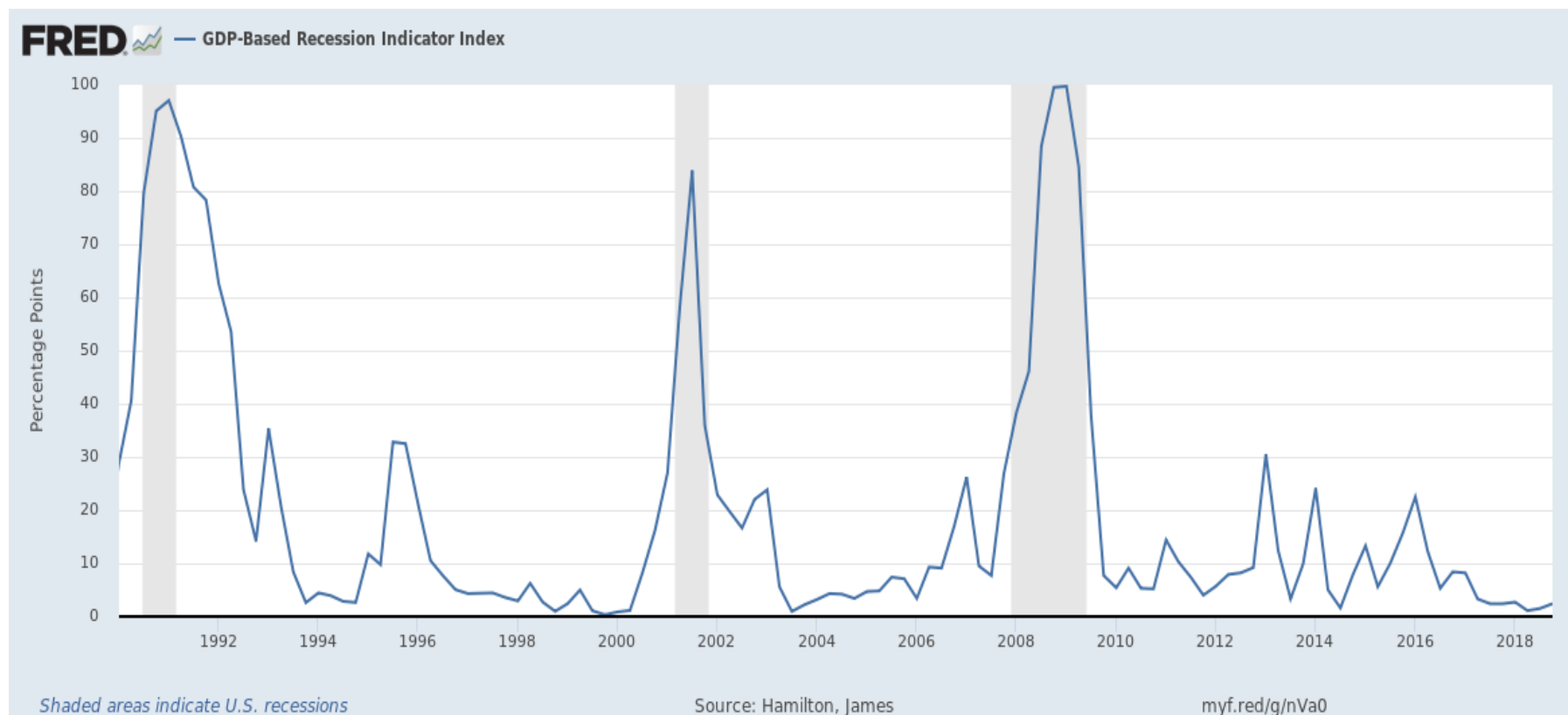
# Macroeconomic conditions

32

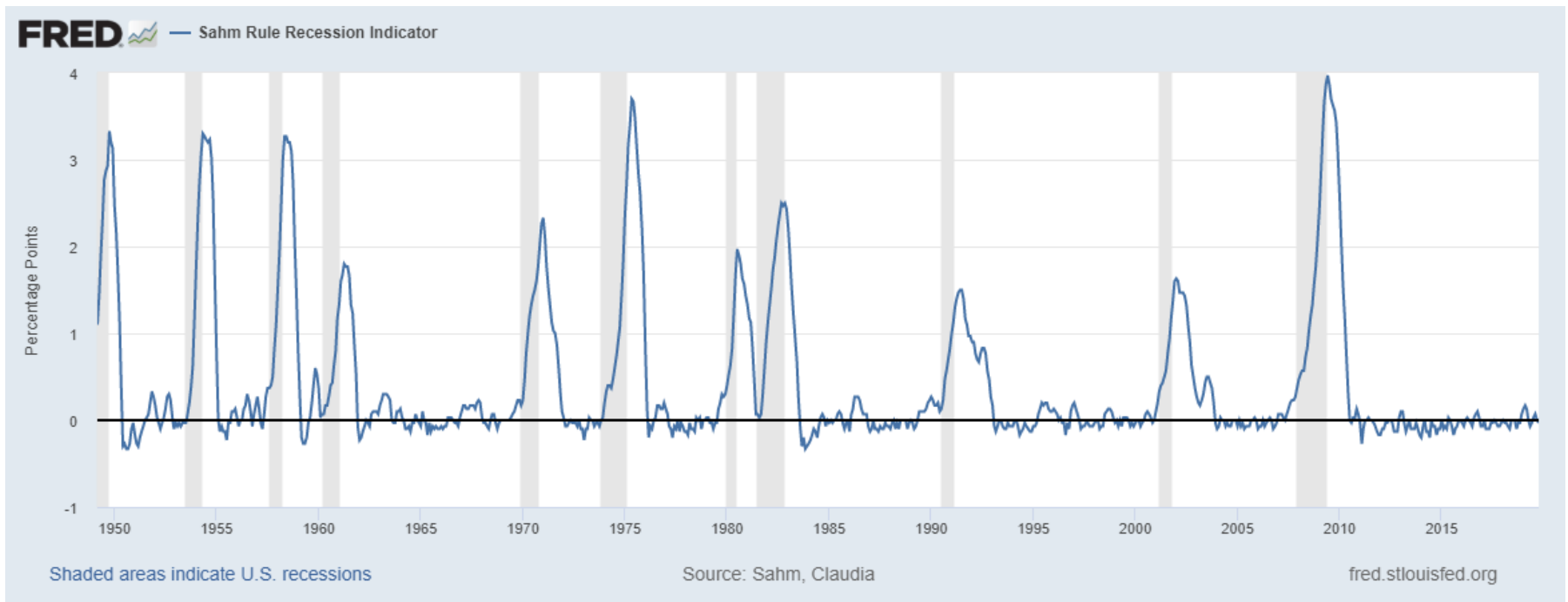
- We are now in the longest period of economic expansion on record
- Some early warning signs of economic slowdown on the horizon (e.g. inverted yield curve), but...



# GDP-Based Recession Indicator remains low



# Sahm Rule Recession Indicator also remains low



# One possible trigger: tariffs

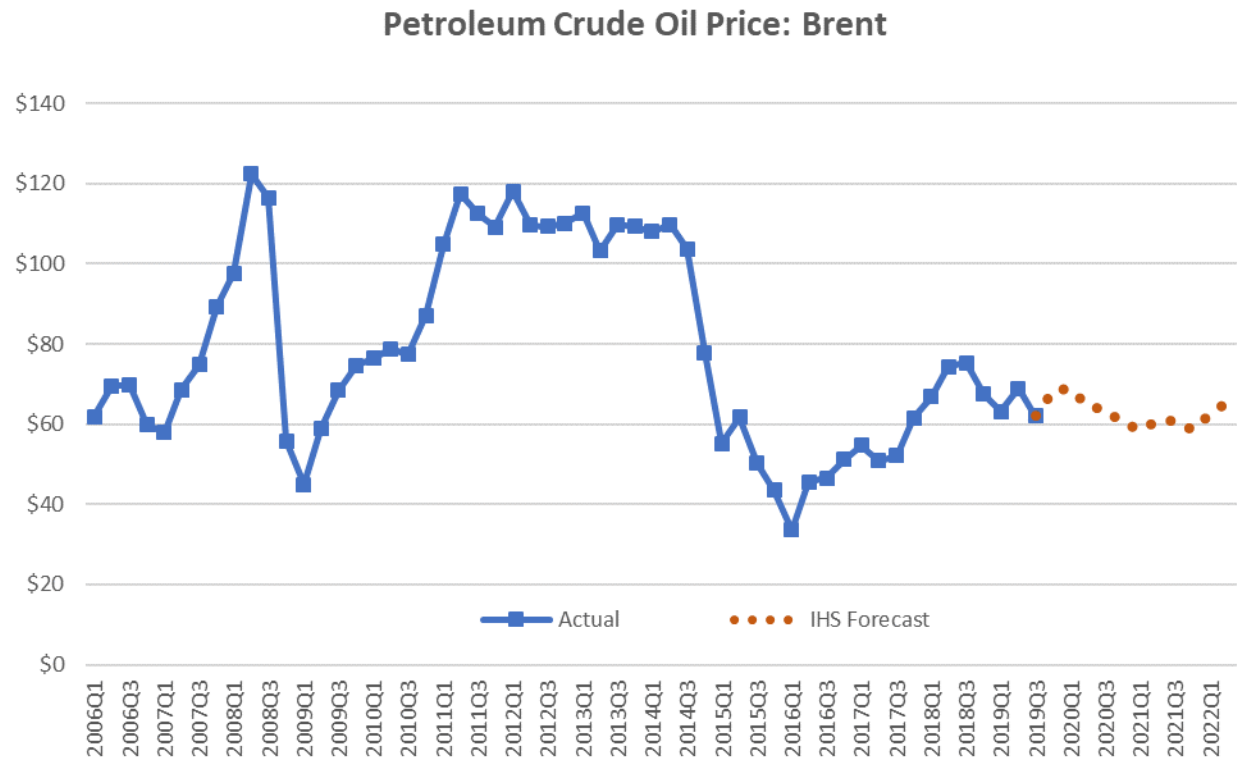
35

- Trade war has created uncertainty for businesses and is starting to impact consumers
- Slowdown in consumer spending could lead to larger economic slowdown
- More on this in the second half...

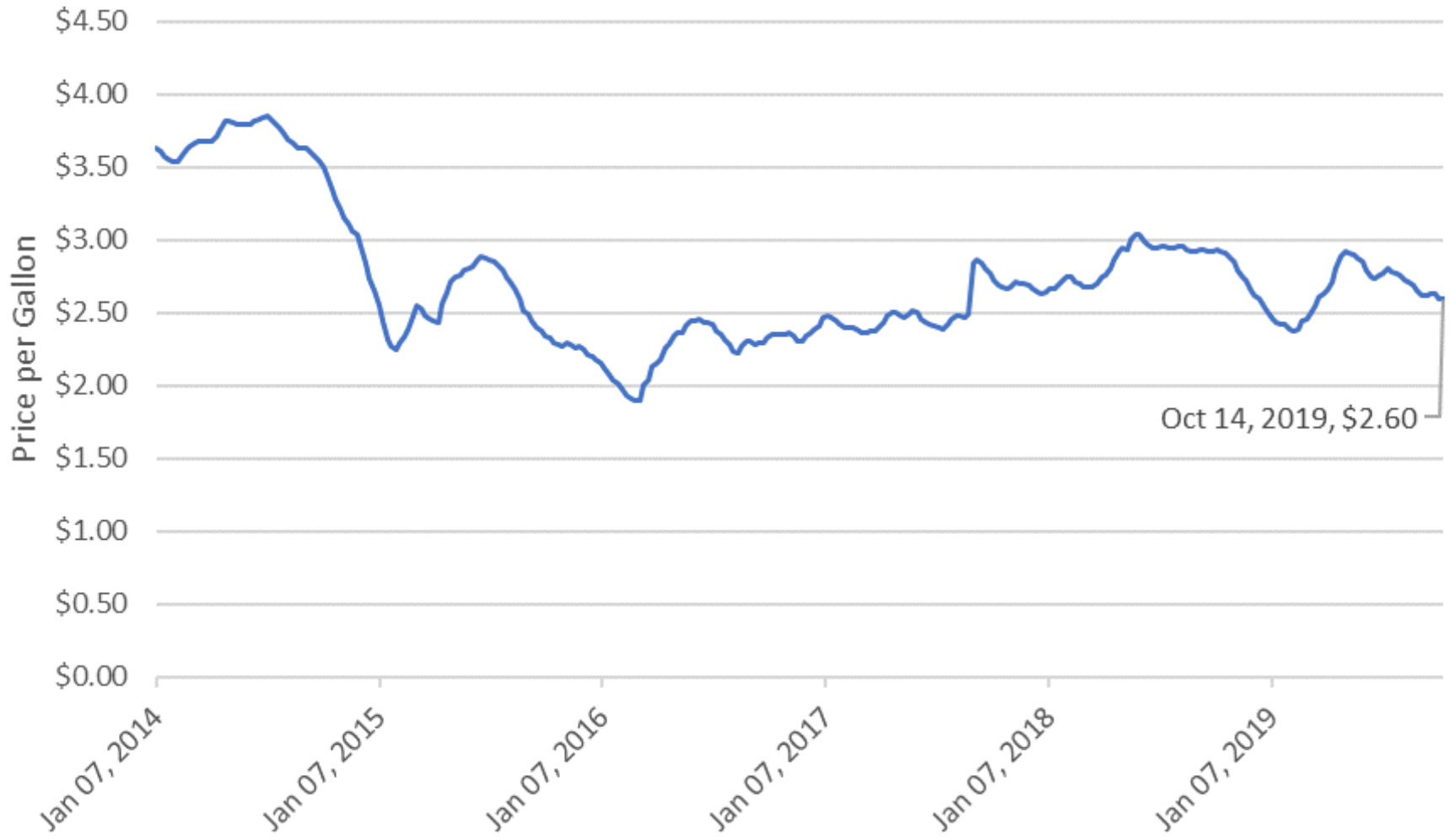
# Energy Prices

36

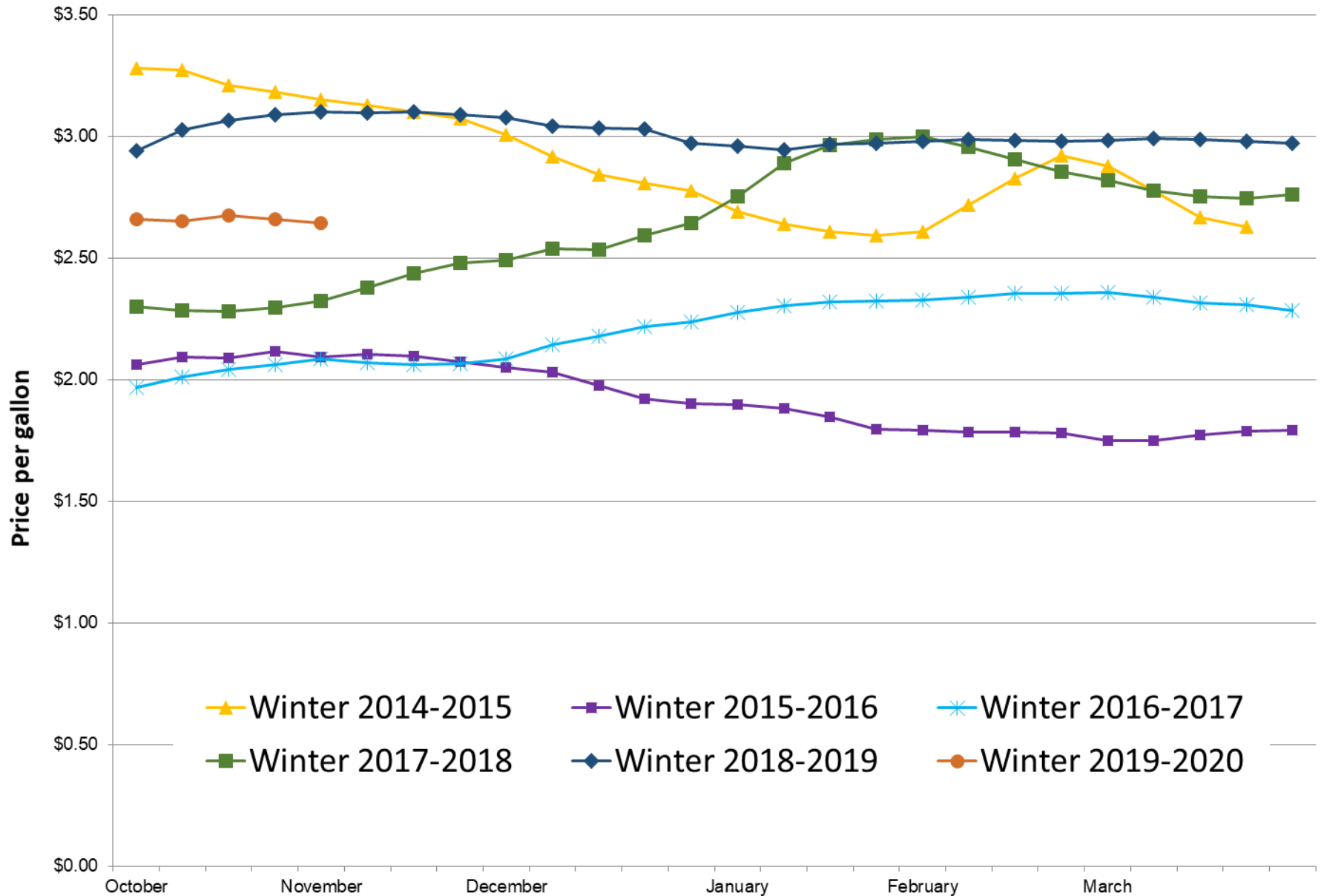
Recent spike in oil prices was relatively small and diminished quickly; forecast is for stable prices, but that could change quickly



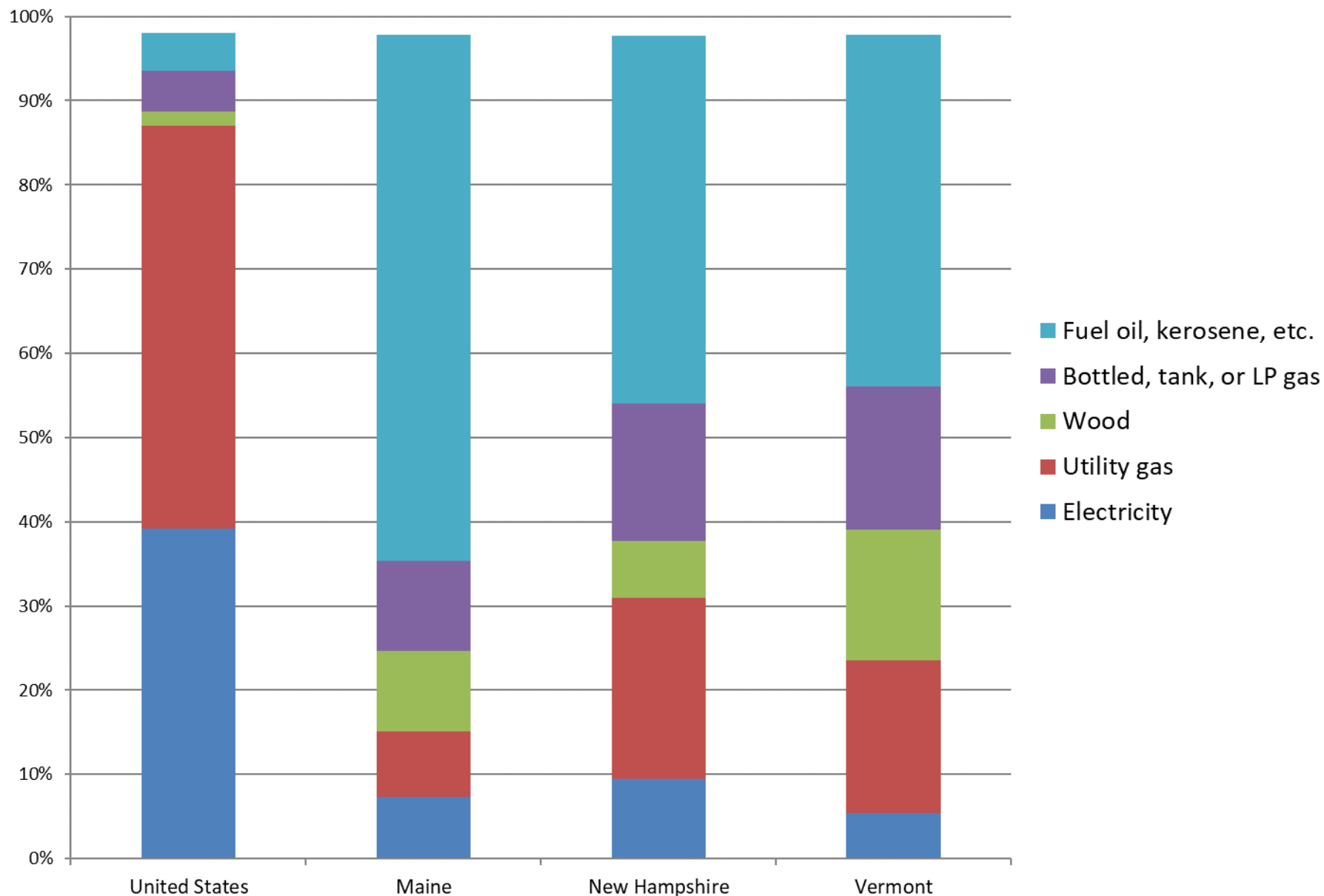
## Weekly New England Retail Gasoline Prices (Dollars per Gallon)



## Maine No. 2 Heating Oil Residential Price



## Percent of Housing Units by Type of Primary Heating Fuel (2018)



# Looking ahead



- 10-year economic development strategic plan will be released in December
- ▣ Nine-month process to develop the strategies, based on data and feedback from people around the state
- ▣ Deployment will be a partnership among public, private, and non-profit



# Contact Information



Amanda Rector

Maine State Economist

Department of Administrative and Financial Services

[amanda.rector@maine.gov](mailto:amanda.rector@maine.gov)

(207) 287-2873