

MAINE AND THE LEWISTON- AUBURN REGION: ECONOMIC AND DEMOGRAPHIC OUTLOOK

Auburn City Council

November 19, 2018

Amanda Rector

Maine State Economist

Department of Administrative and Financial Services

Overview



- Demographics
- Employment and GDP
- Wages and Income
- Other Indicators

Demographics



Maine

- 2017 Population Estimate: 1,335,907
 - ▣ 42nd largest in US
- 2010 – 2017 Population Change: +0.6%
 - ▣ 45th in US (ahead of WV, VT, IL, CT, and MS)
- 2017 Median age: 44.7 years
 - ▣ Oldest in US
- 93.3% White, Non-Hispanic
 - ▣ Highest percentage in US



Androscoggin County and Auburn

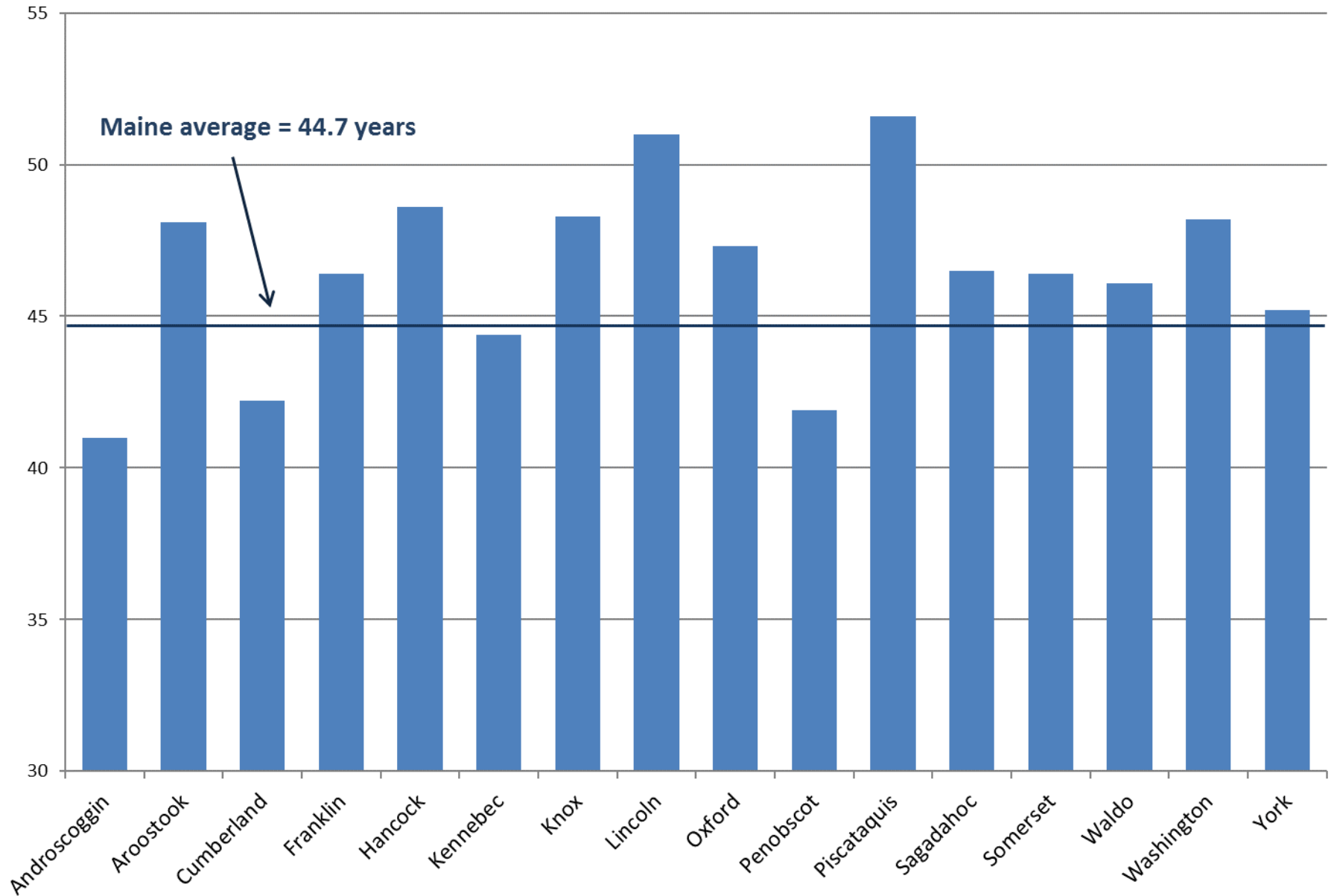
Androscoggin County

- 2017 Population Estimate: 107,651
 - ▣ 5th in Maine
- 2010 – 2017 Population Change: 0.0%
 - ▣ 7th in Maine
- 2017 Median Age: 41.0 years
 - ▣ Youngest in Maine
- 92.5% White, Non-Hispanic
 - ▣ Third-lowest in Maine

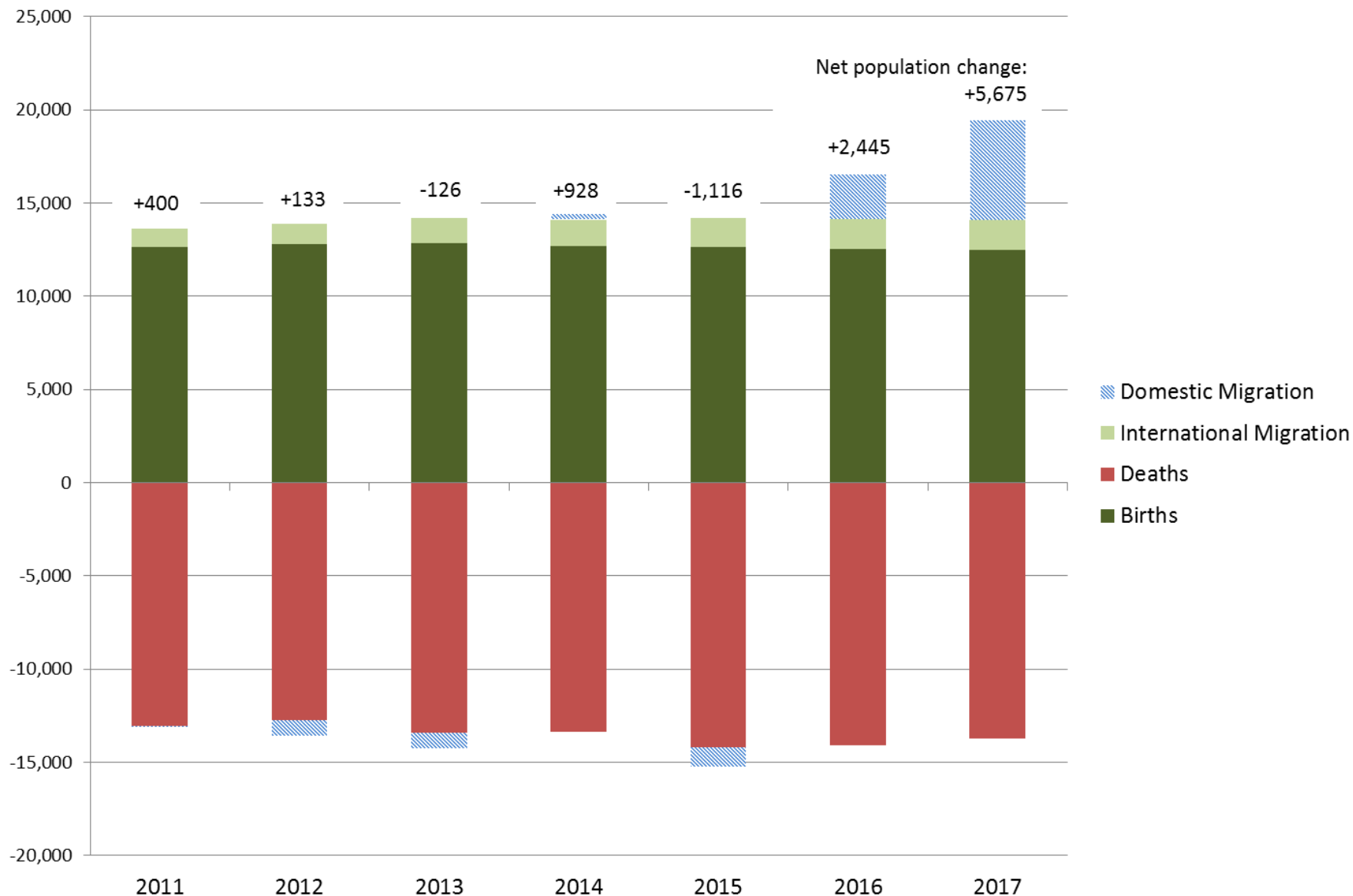
Auburn

- 2017 Population Estimate: 23,033
 - ▣ 5th in Maine
- 2010 – 2017 Population Change: -0.1%
- 2016 ACS 5-Year Estimate of Median Age: 39.3 years
- 90.7% White, Non-Hispanic

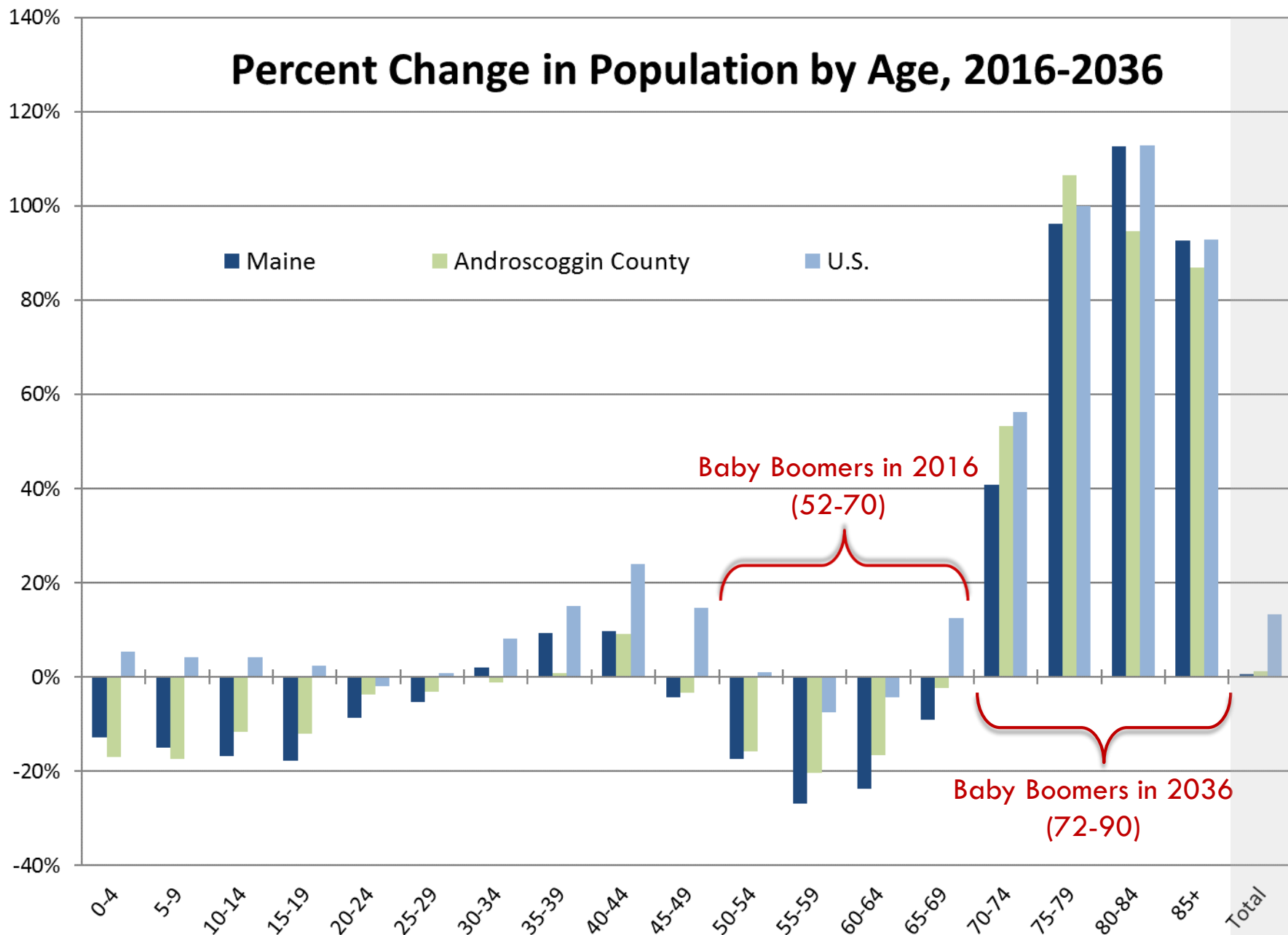
Median Age



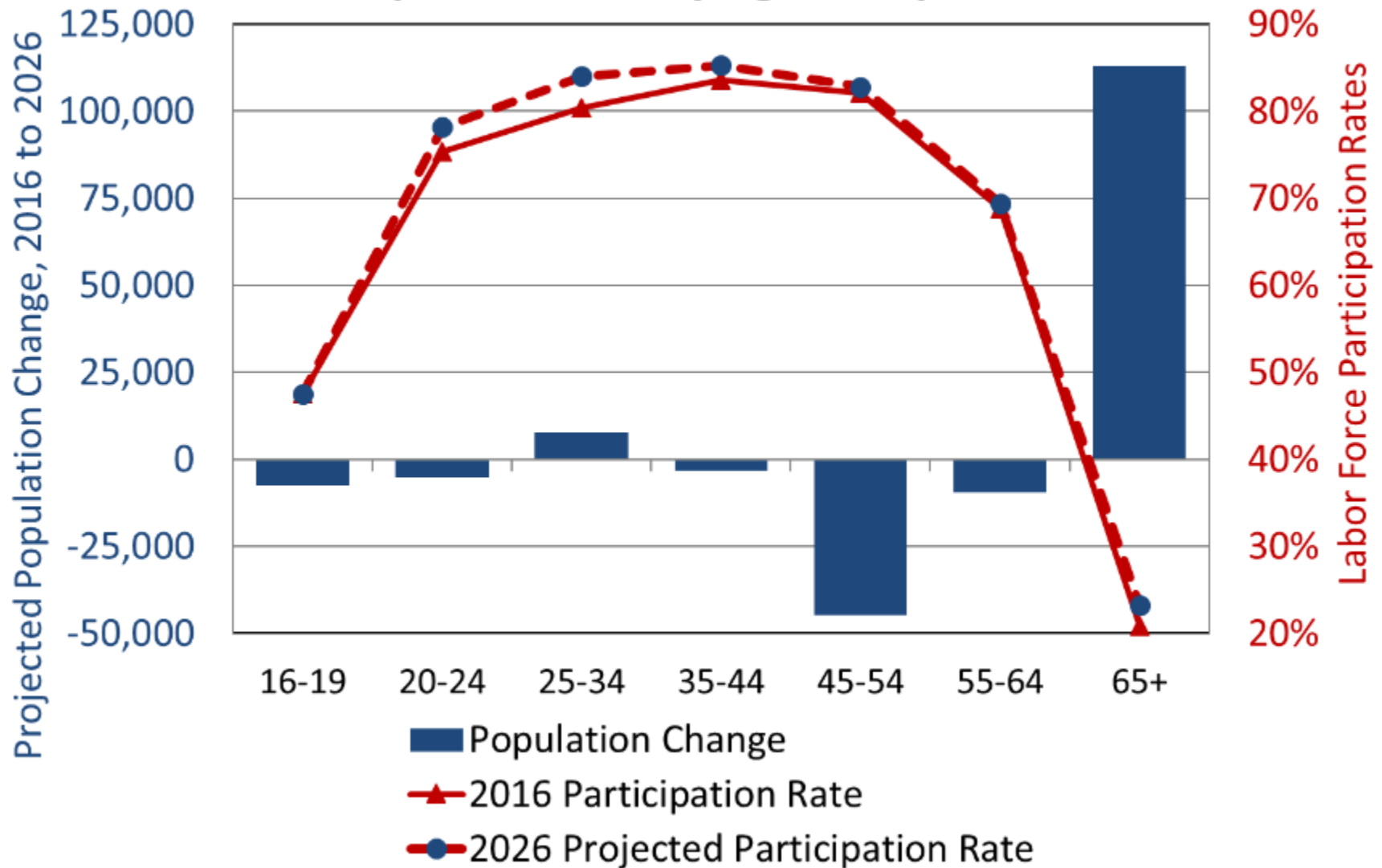
Components of Population Change, Maine



Percent Change in Population by Age, 2016-2036



Projected Population Change and Participation Rates by Age Group in Maine



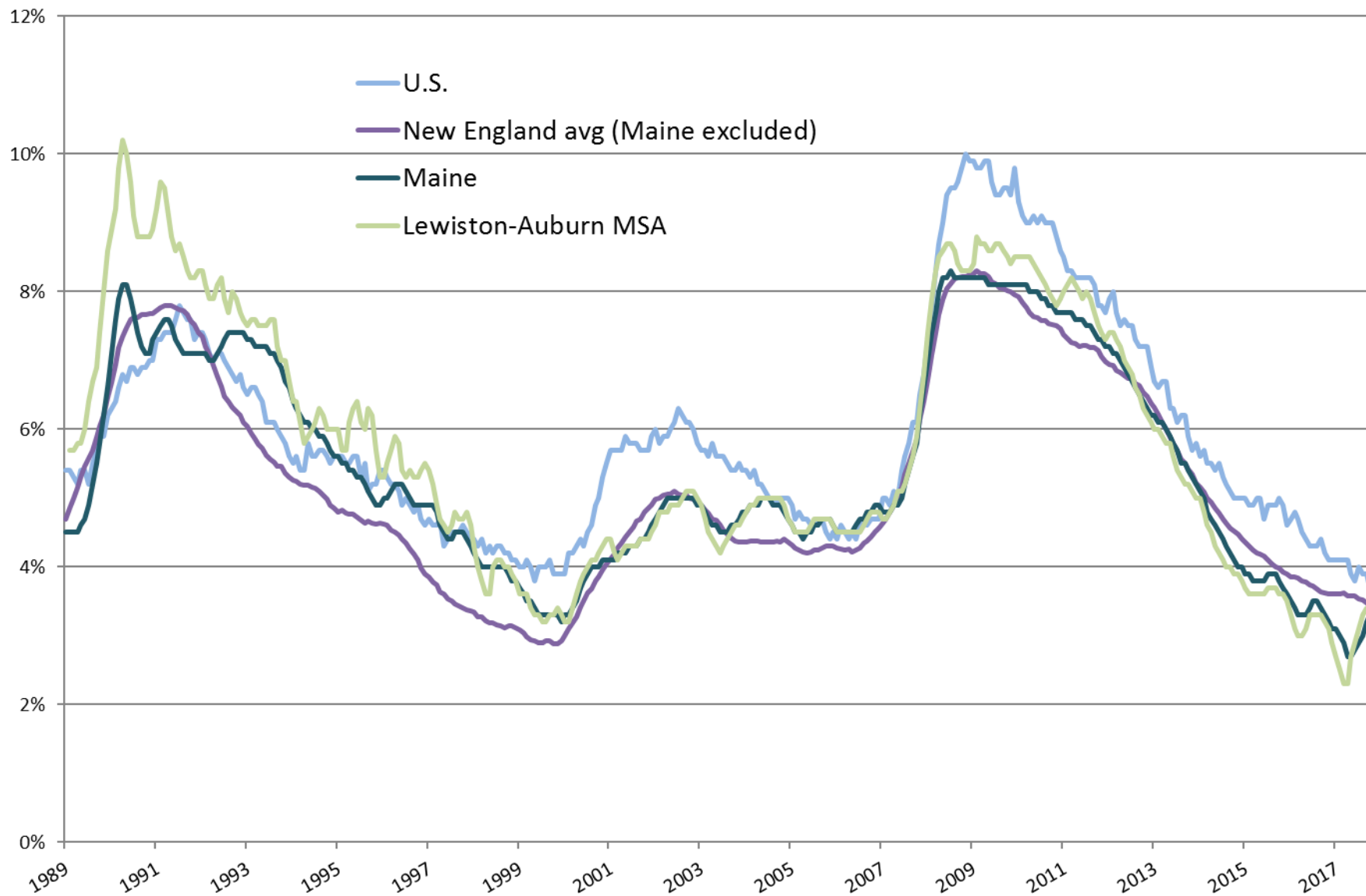
Source: Maine Department of Labor, *Employment Outlook to 2026*;

<https://cwri1.blogspot.com/2018/07/employment-outlookto-2026.html>

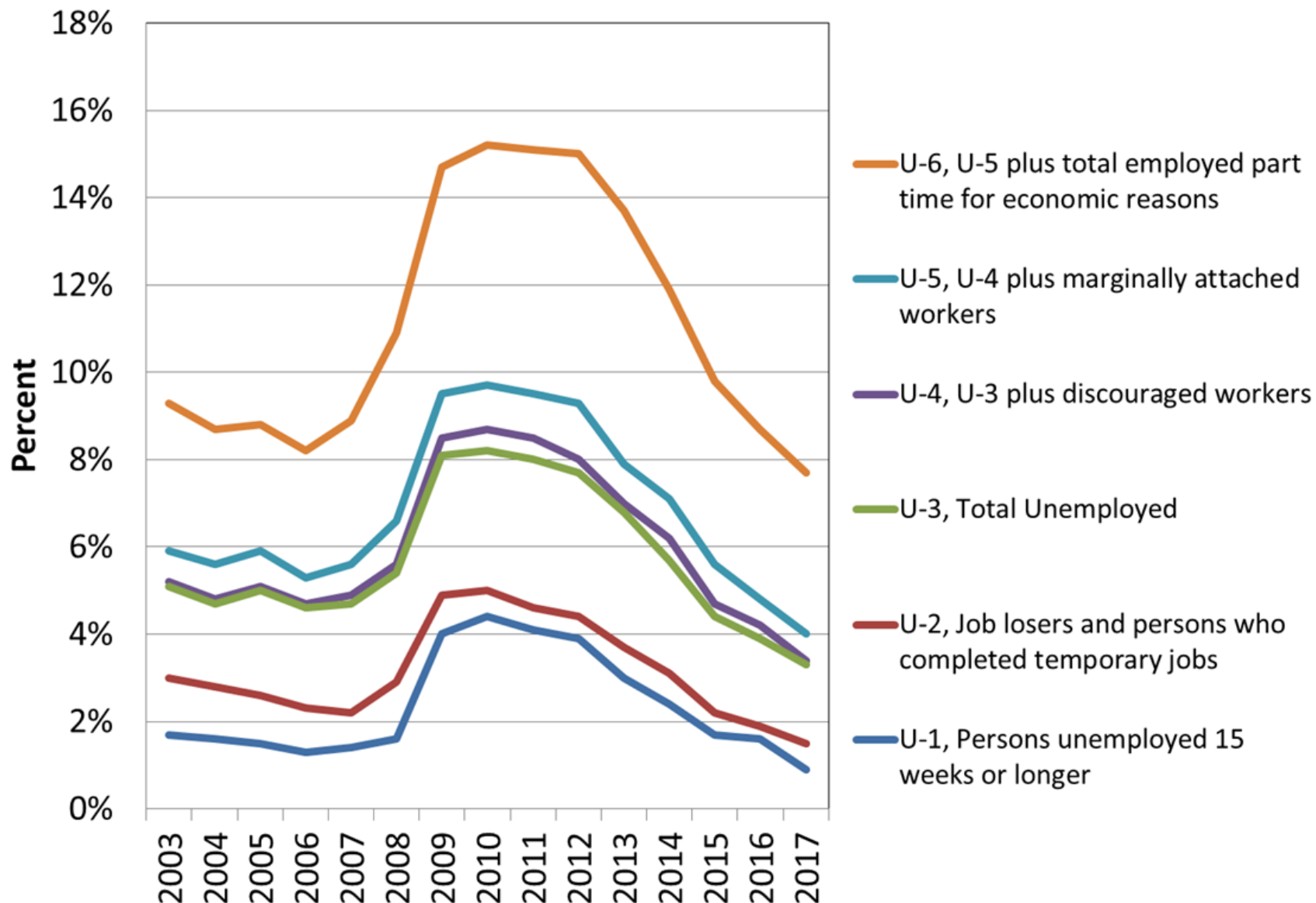
Employment and GDP



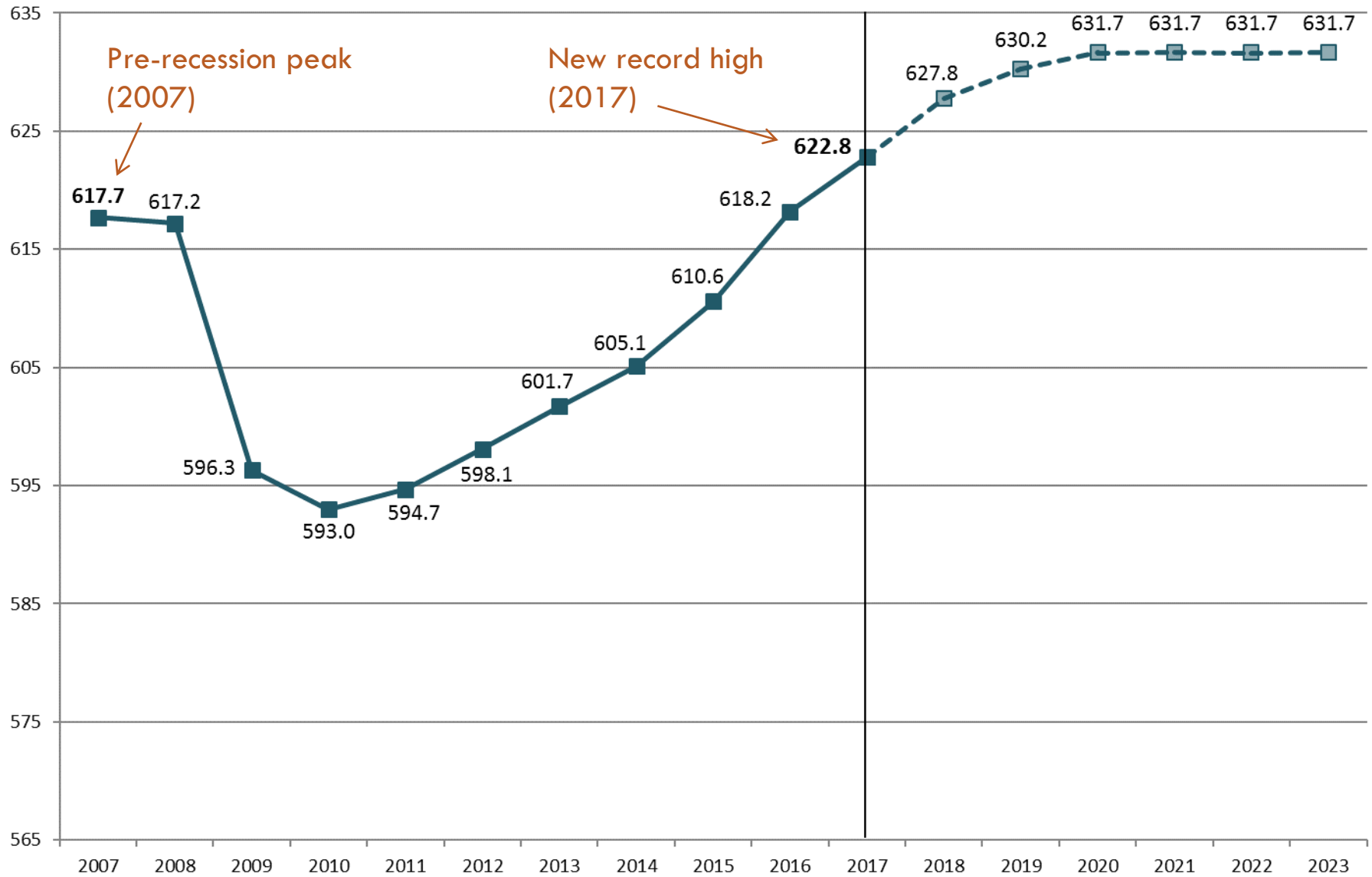
Monthly Unemployment Rate (Seasonally Adjusted)



Alternative Measures of Labor Underutilization - Maine

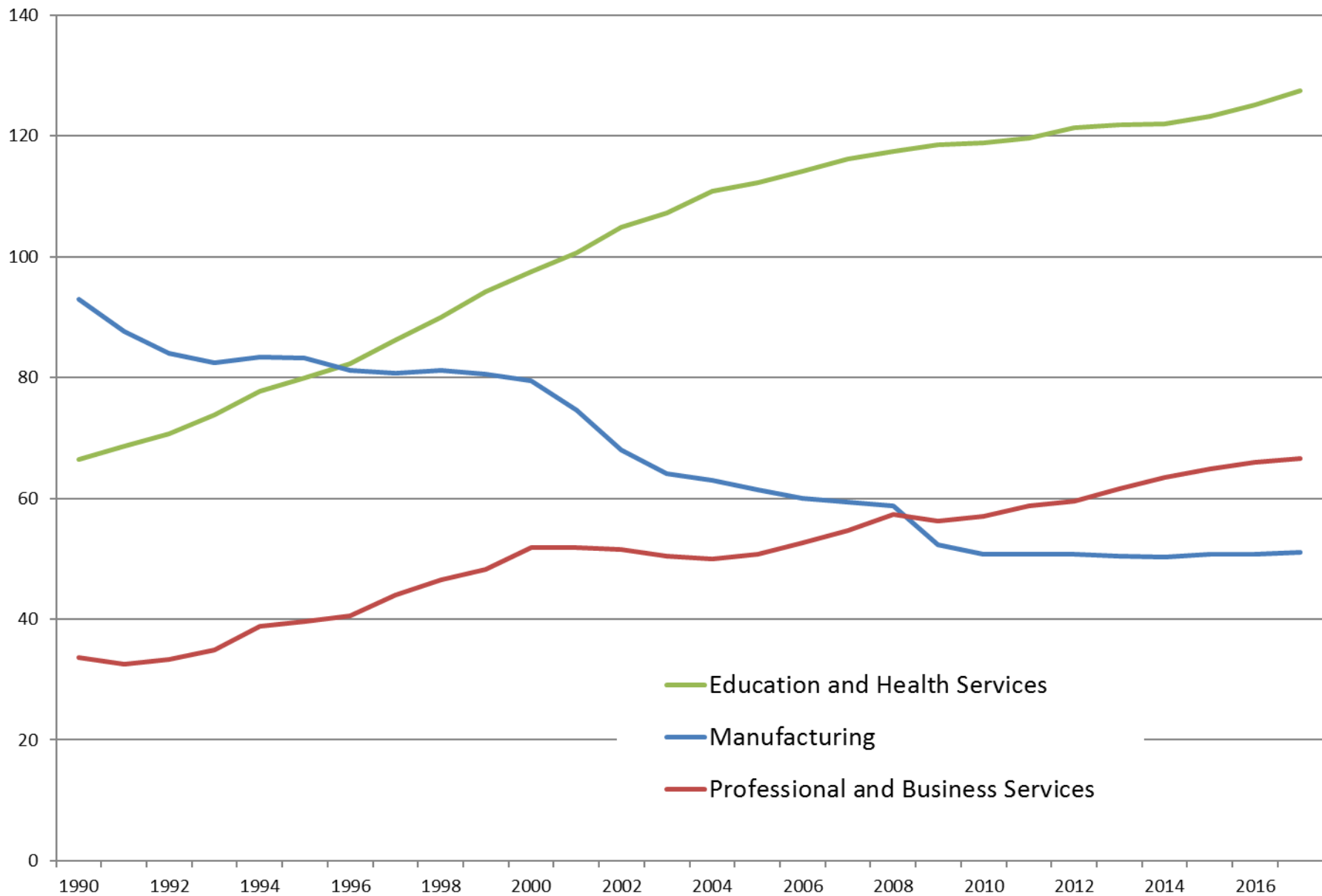


Total Nonfarm Employment (in thousands) History and CEFC forecast

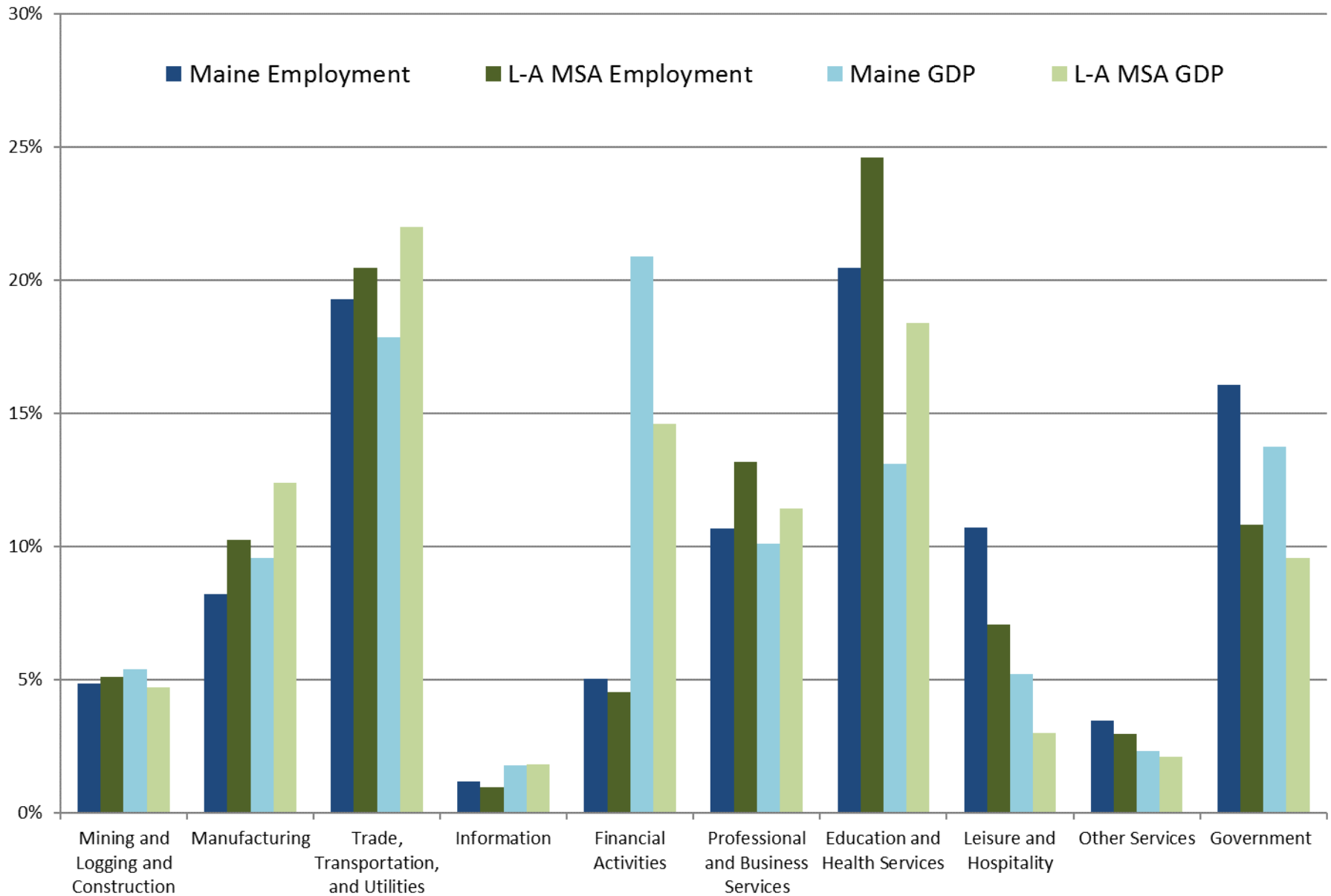


Sources: Maine Department of Labor and Consensus Economic Forecasting Commission report, November 1, 2018

Maine Wage and Salary Employment by Industry (in thousands)

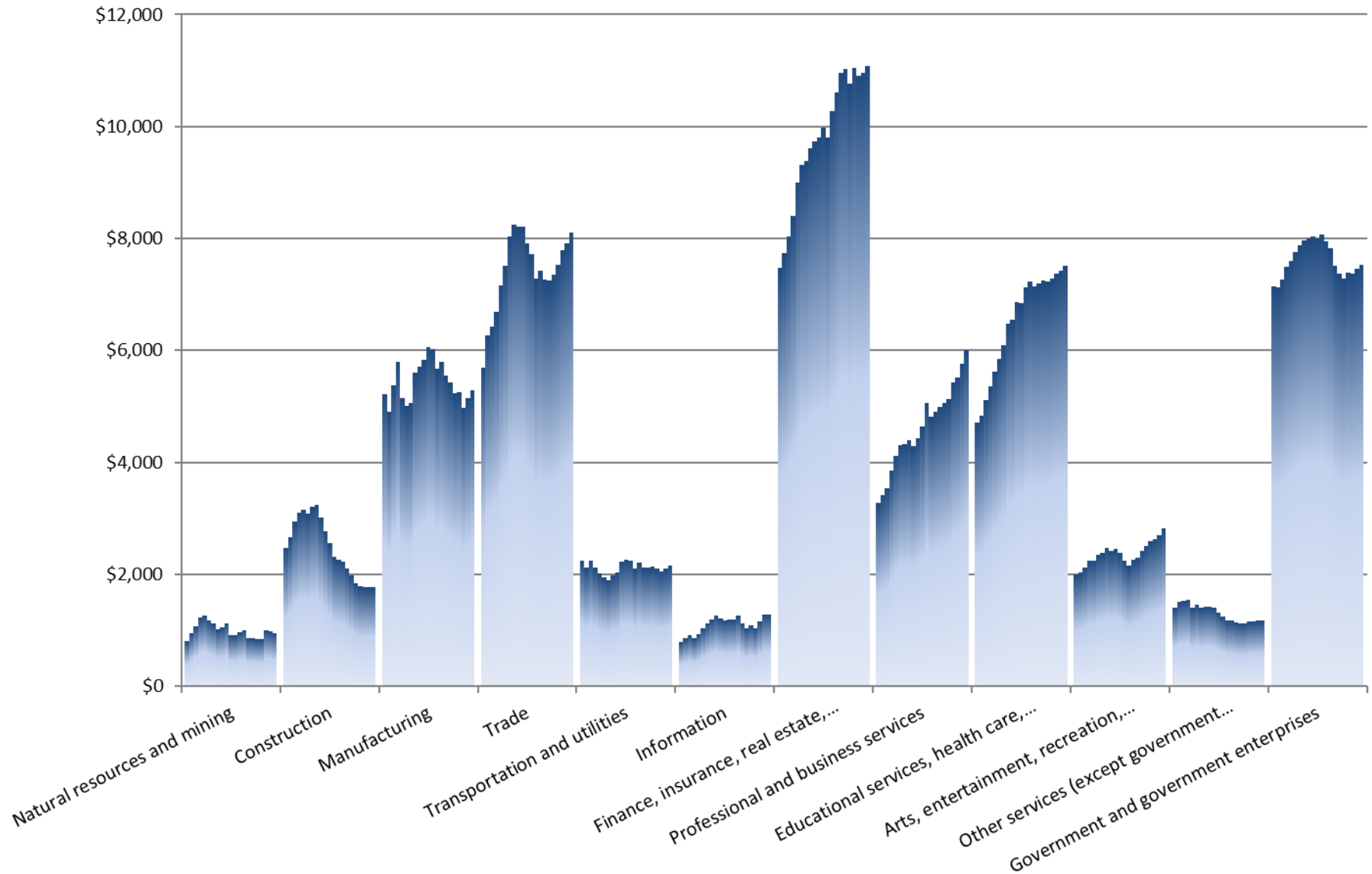


2017 Maine Employment and GDP by Industry

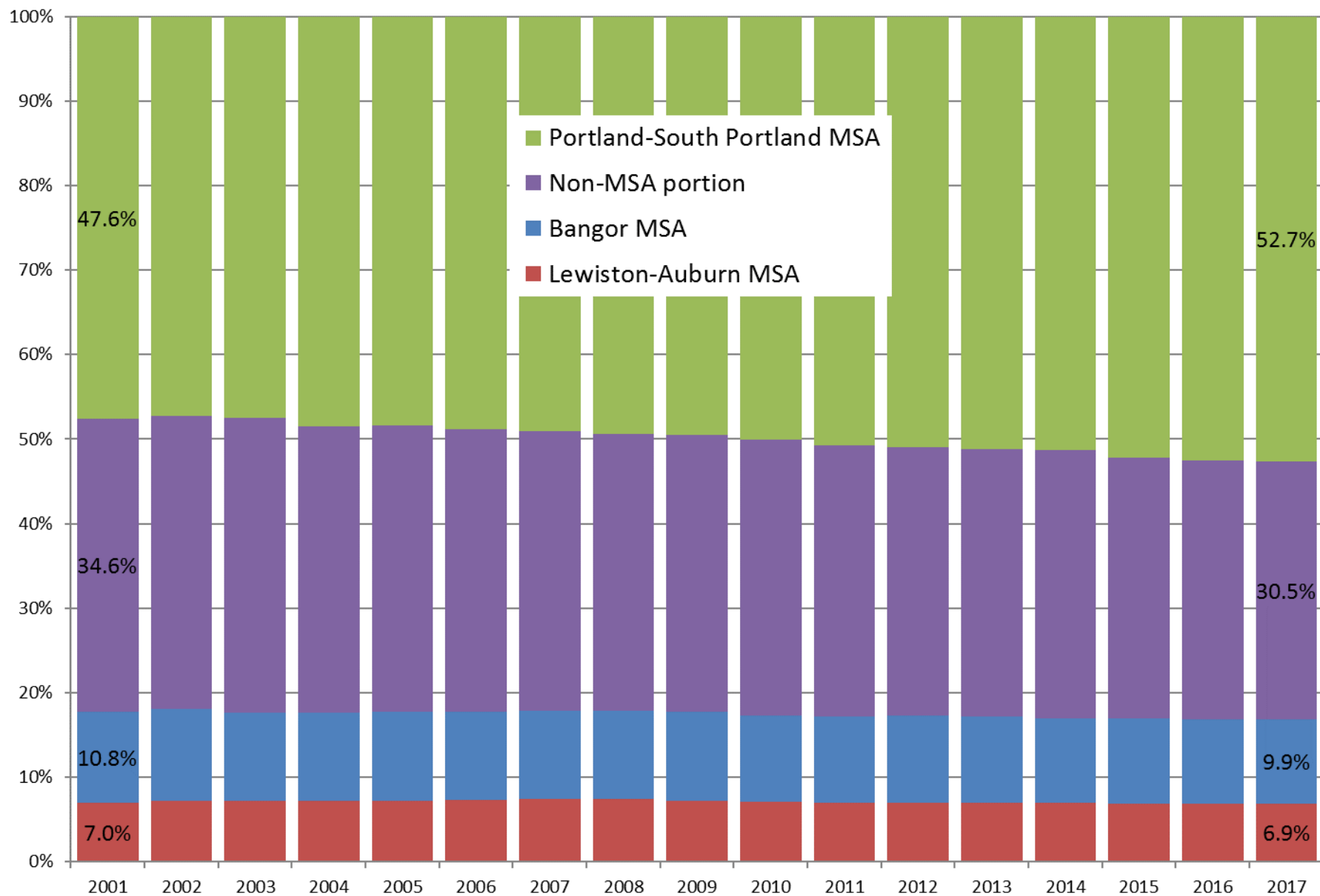


Sources: Maine Department of Labor, Center for Workforce Research and Information and U.S. Bureau of Economic Analysis

Maine Real GDP by Industry, 1997-2017 (in millions of chained 2012 dollars)



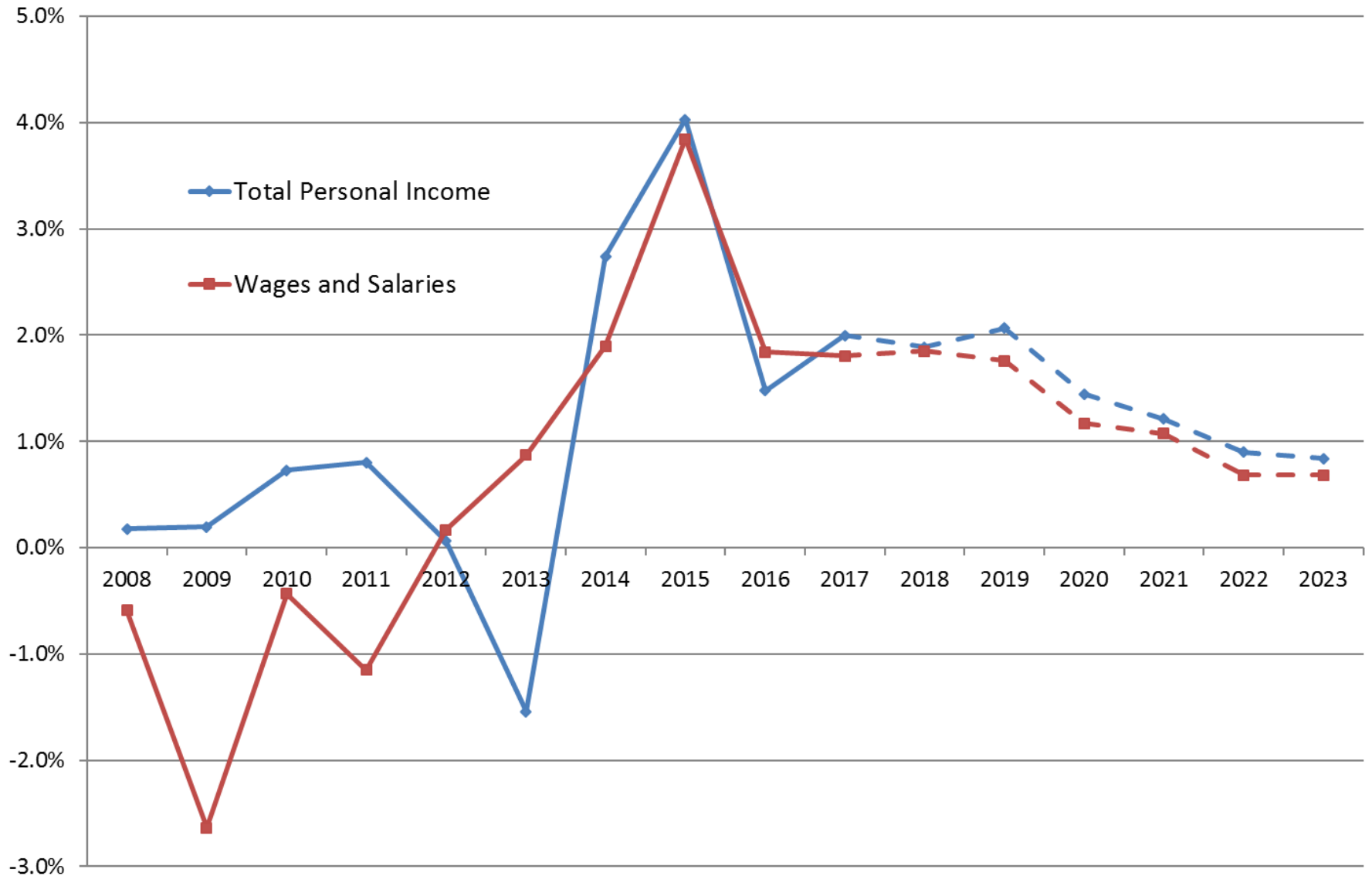
Share of Maine Real GDP by Metropolitan Area



Wages and Income

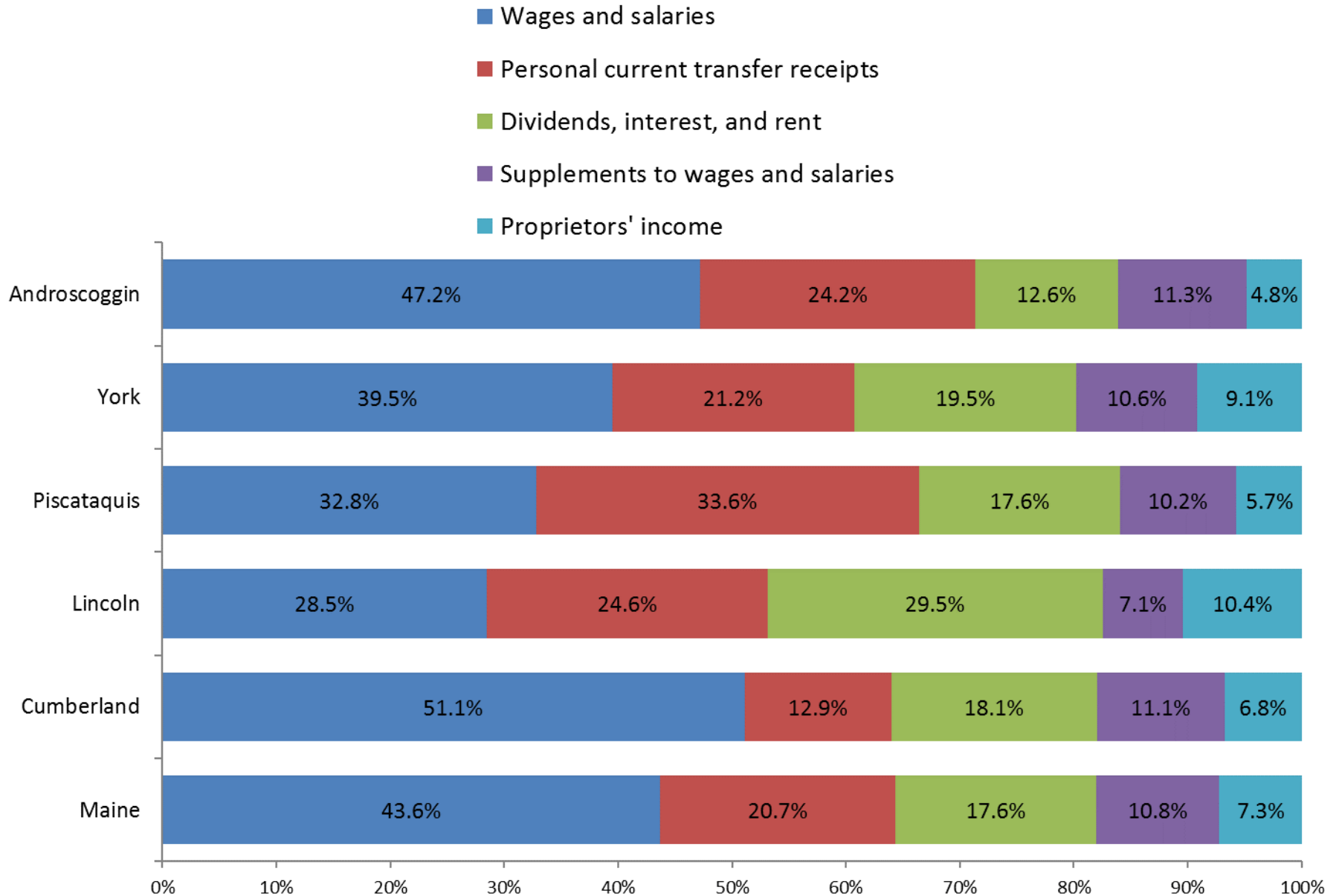


Percent Change in Real Personal Income, Maine 2008-2017 and forecast to 2023

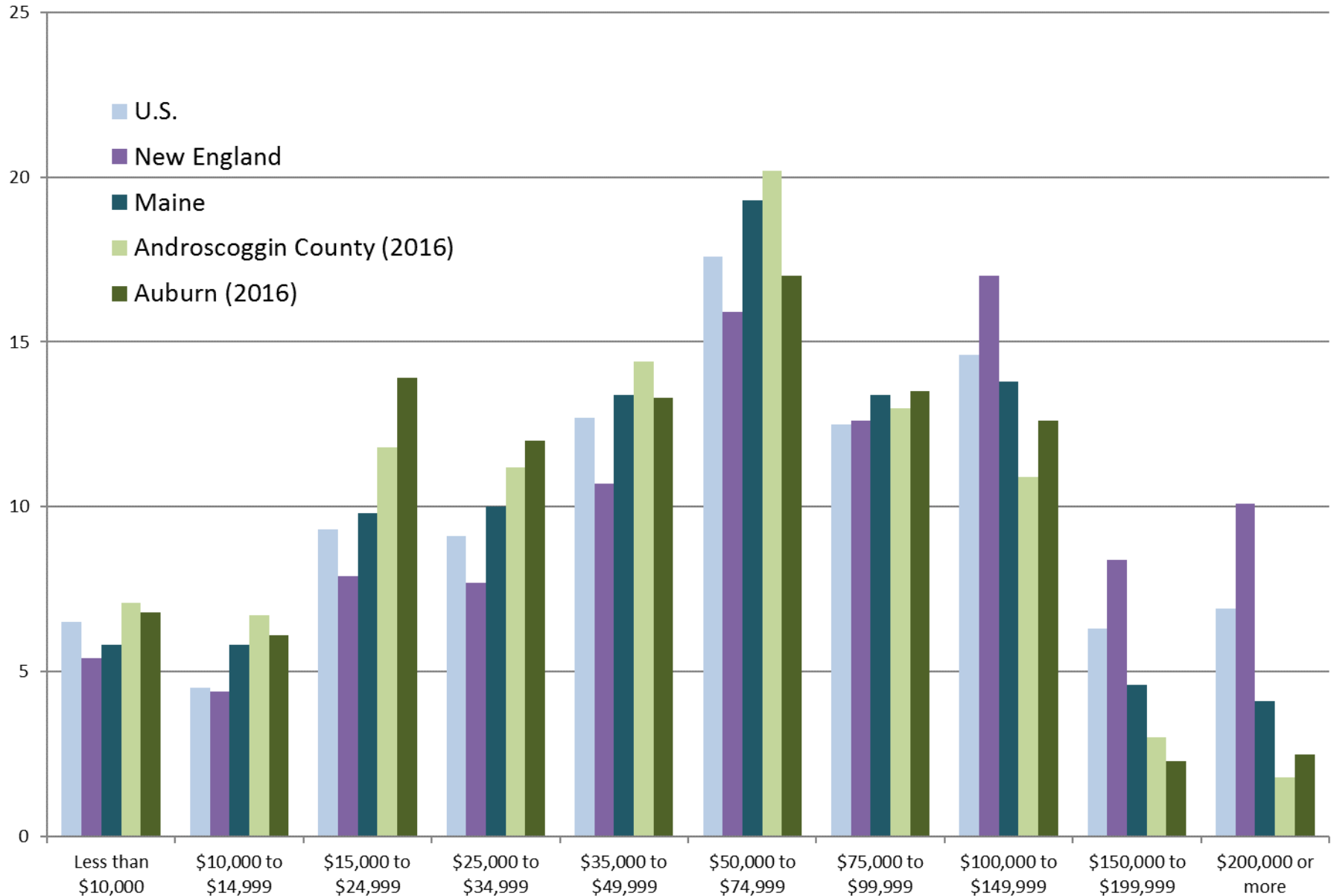


Sources: U.S. Bureau of Labor Statistics, U.S. Bureau of Economic Analysis, and Consensus Economic Forecasting Commission report, November 1, 2018

Major Components of Personal Income, 2017



Household Income and Benefits, 2017

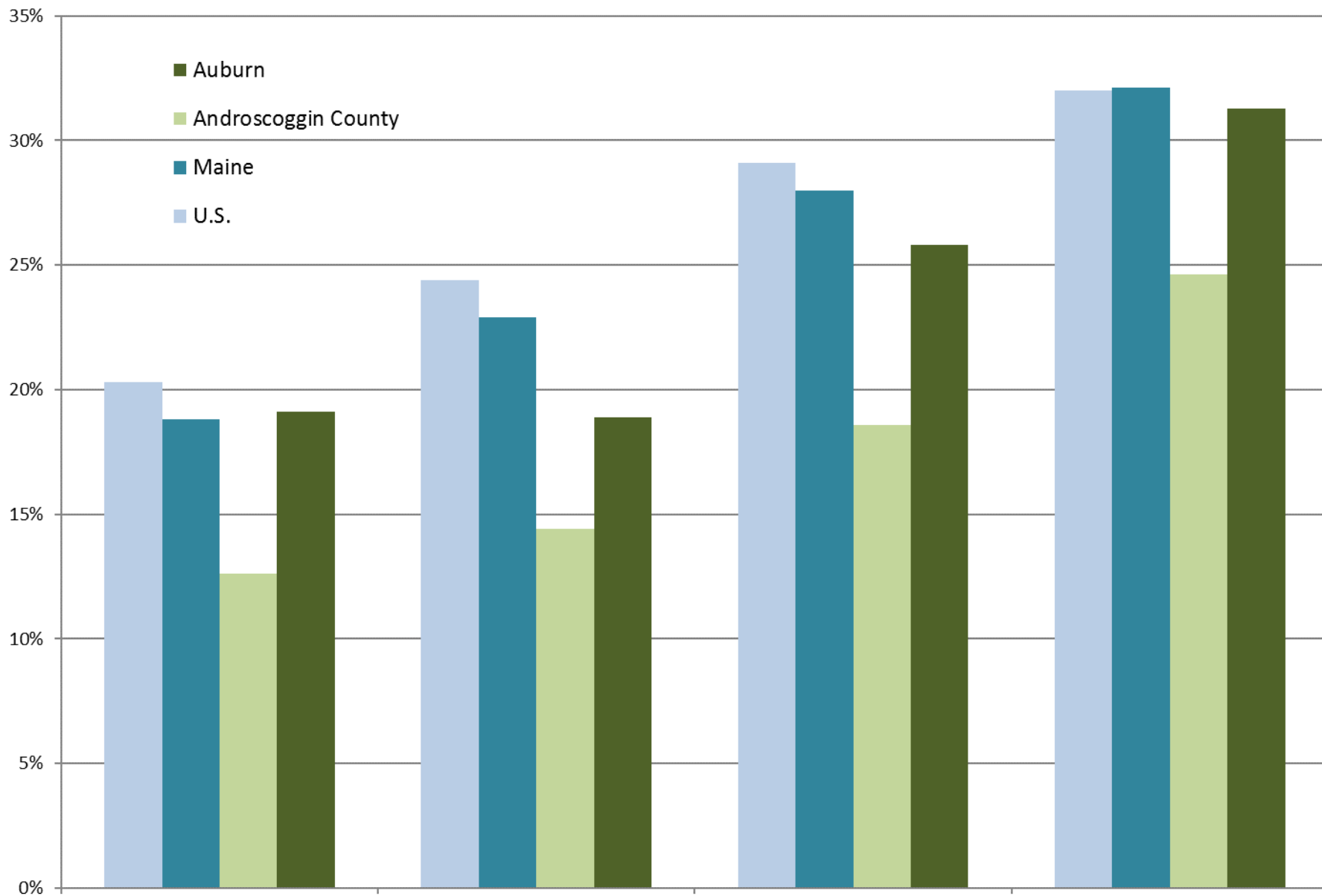


Source: U.S. Census Bureau, 2017 American Community Survey 1-year estimates and 2016 ACS 5-year estimates

Other Indicators

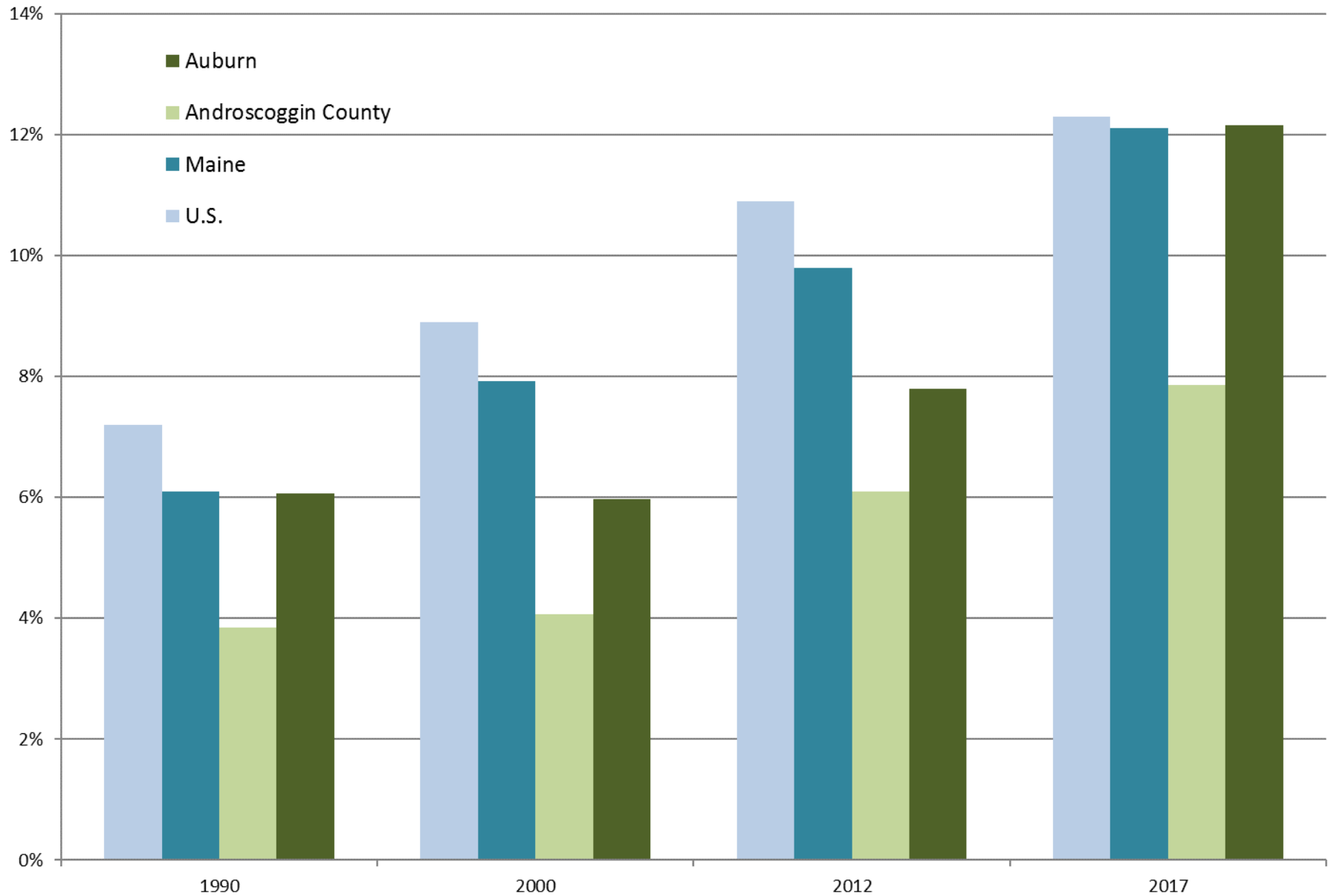


Percent of Population Age 25+ with a Bachelor's Degree or Higher



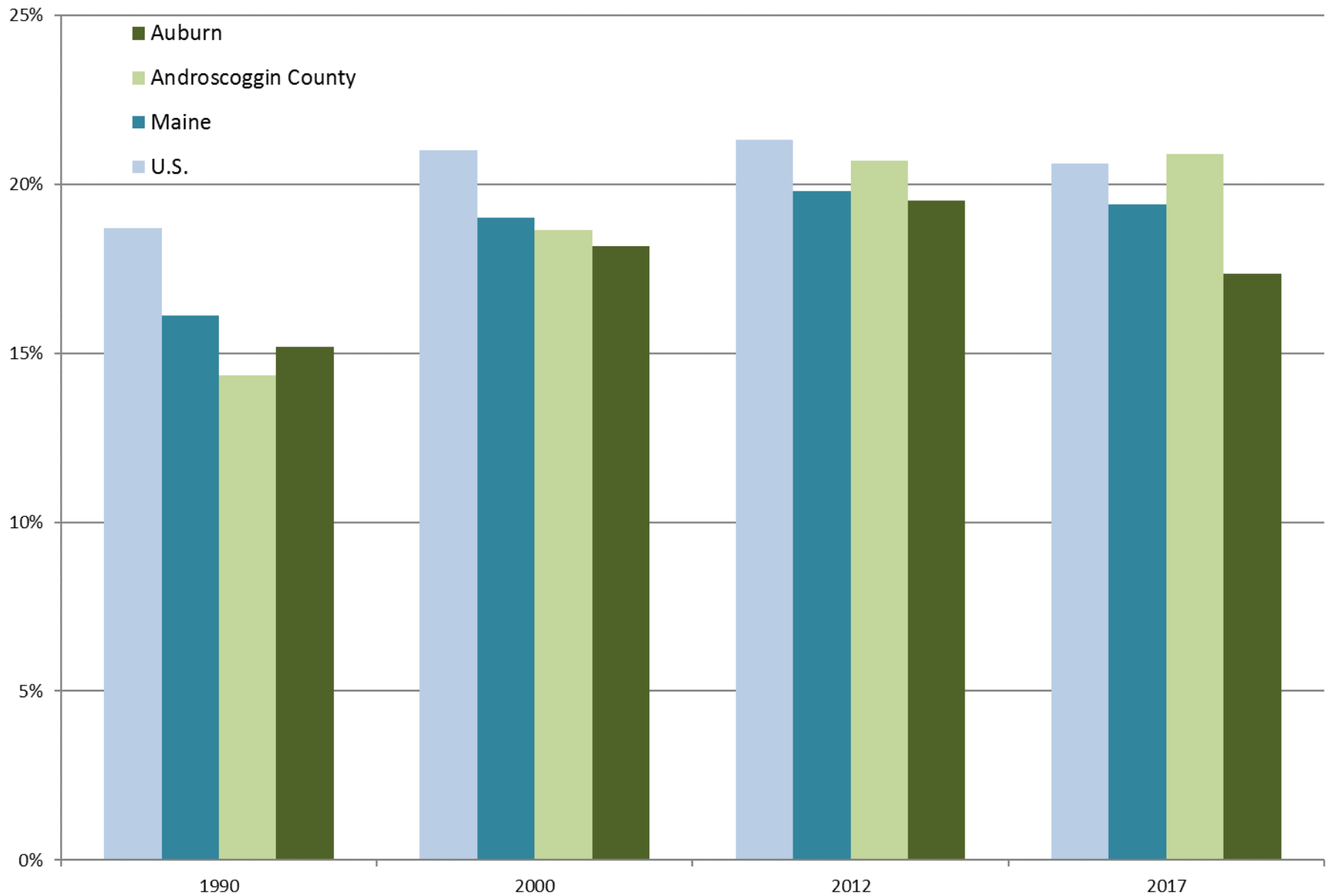
Source: U.S. Census Bureau, Decennial Census and American Community Survey

Percent of Population Age 25+ with a Graduate or Professional Degree



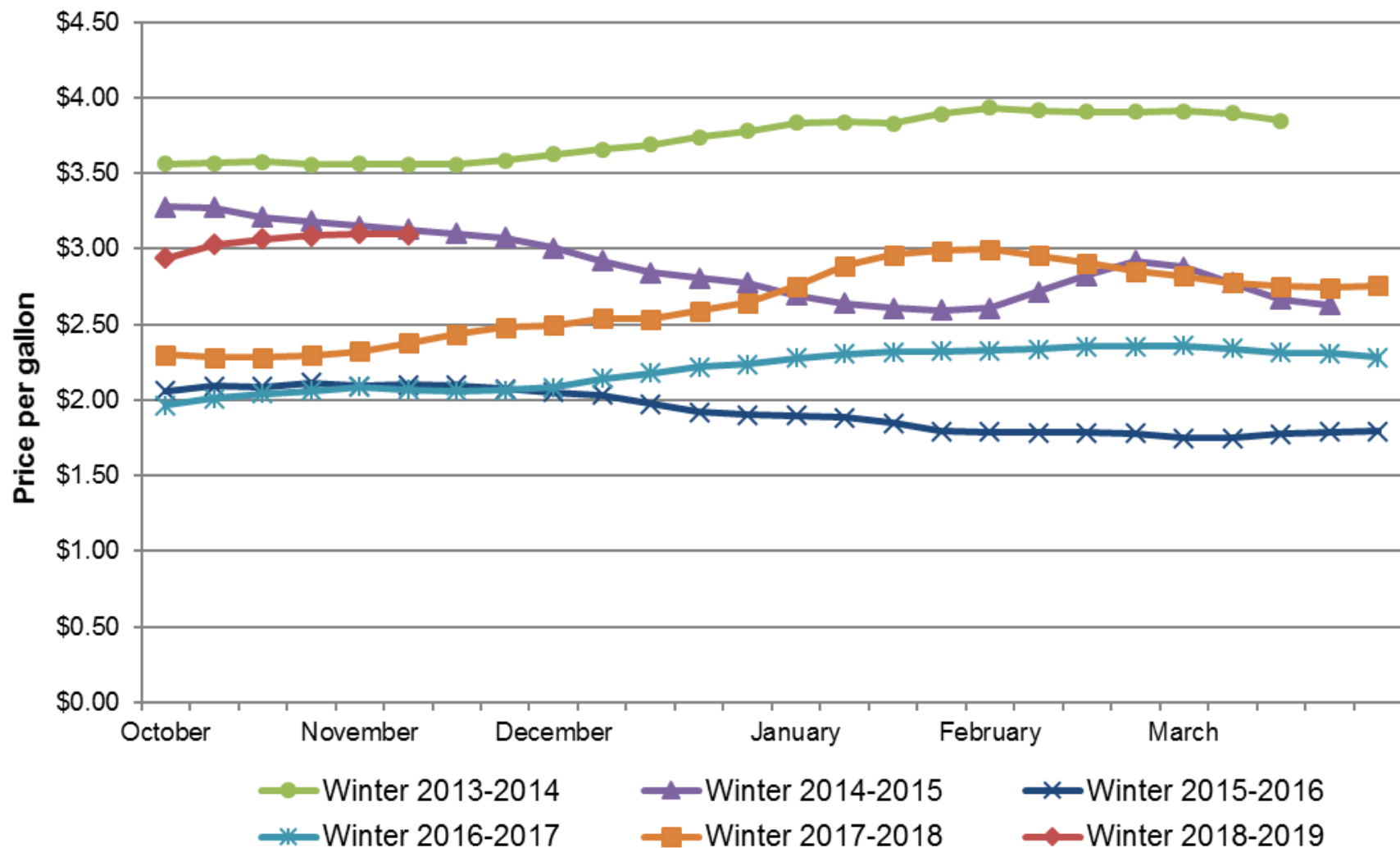
Source: U.S. Census Bureau, Decennial Census and American Community Survey

Percent of Population Age 25+ with Some College, No Degree

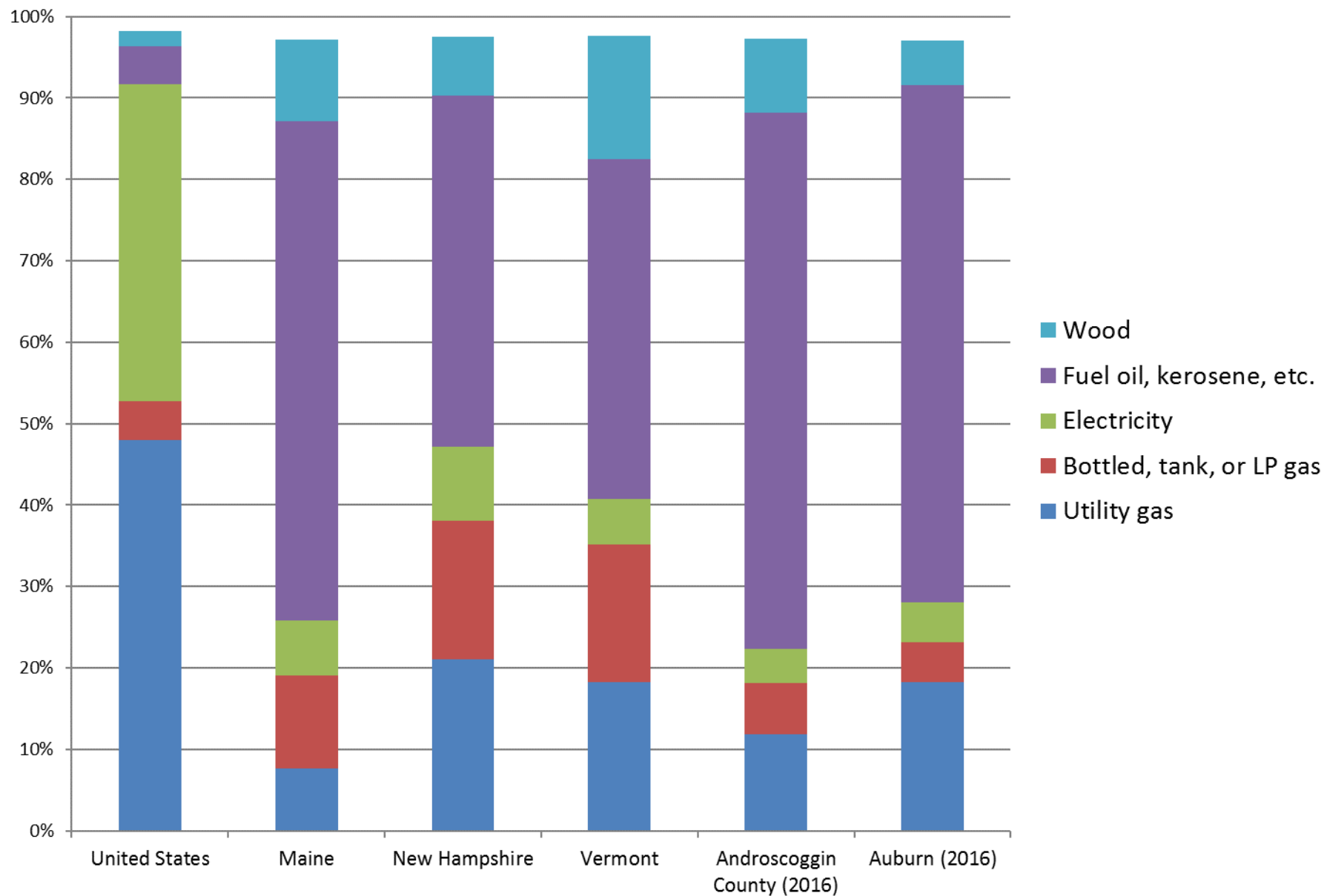


Maine Retail Sales	% Change from August 2017 to August 2018	% Change last three months / same 3 month period one year ago
Building Supply	7.8%	6.5%
Food Store	3.8%	3.6%
General Merchandise	-1.1%	-6.6%
Other Retail	13.0%	13.7%
Restaurant	6.0%	5.7%
Lodging	4.5%	3.9%
Auto Transportation	11.0%	5.4%
Total	7.0%	5.0%
Business Operating	12.0%	11.9%
Personal Consumption	6.6%	4.3%

Maine No. 2 Heating Oil Residential Price



Percent of Housing Units by Type of Primary Heating Fuel (2017)



Contact Information



Amanda Rector

Maine State Economist

Department of Administrative and Financial Services

amanda.rector@maine.gov

(207) 287-2873