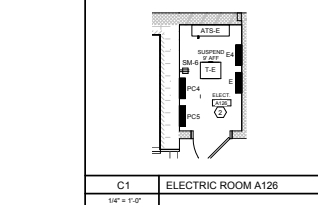


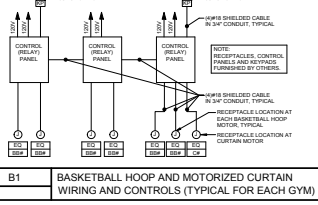
E1 KEY PLAN

- 1 PROVIDE JUNCTION BOX AND CIRCUIT FOR MECHANICAL CONTROL. PROVIDE ABOVE CEILING EXCEPT IN AREAS WITHOUT CEILINGS PROVIDE AT UNDERSIDE OF DECK, UNO.
- 2 3/4" x 48 FBE RETARDANT PLYWOOD BACKBOARD, PAINT BOTH SIDES WITH 2 COATS OF BLACK SATIN LATEX PAINT.
- 3 PROVIDE RECEPTACLE ABOVE CEILING FOR SOUND ENHANCEMENT SYSTEM.
- 4 CONTROL PANELS FOR GYM A130 BASKETBALL HOOPS AND CURTAIN - REFER TO DETAIL B1EP101a.
- 5 PROVIDE CONDUIT SLEEVES. REFER TO DETAIL B1EP101 FOR QUANTITY AND SIZES OF SLEEVES.
- 6 PROVIDE EMPTY SINGLE-GANG BOX 44" AFF WITH 1/2" CONDUIT WITH PULLSTRING FOR SHADE CONTROLS. PROVIDE CONDUIT FROM JBOX TO SHADE MOTORS.
- 7 PROVIDE EMPTY SINGLE-GANG BOX 44" AFF WITH 1/2" CONDUIT WITH PULLSTRING FOR PROJECTION SCREEN CONTROLS. PROVIDE CONDUIT FROM JBOX TO PROJECTION SCREEN MOTORS, CONTROLS AND CONTROL WIRING BY OTHERS.
- 8 VERIFY AND WIRE ACTUAL QUANTITY OF DEVICES.
- 9 MOUNT 15" AFF TO TOP.
- 10 WIRE DOWNSTREAM OF GFI RECEPTACLE ON CIRCUIT.

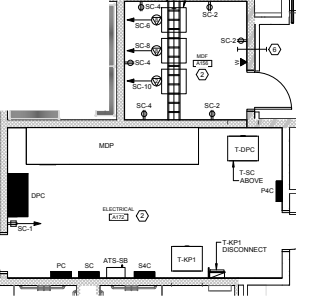
D1 KEY NOTES



C1 ELECTRIC ROOM A126  
14' x 10'



B1 BASKETBALL HOOP AND MOTORIZED CURTAIN WIRING AND CONTROLS (TYPICAL FOR EACH GYM)



A1 ELECTRICAL AND MDF ROOMS  
14' x 10'

A6 LEVEL 1 - PART A - POWER AND SYSTEMS PLAN  
14' x 10'

**PDT** ARCHITECTS  
49 GARTMOUTH STREET  
PORTLAND, MAINE 04101  
207-776-1059  
www.pdtarch.com

COPYRIGHT 2017  
PDT ARCHITECTS  
Reproduction or modification of this document without the written permission of PDT Architects.

**Allied Engineering**  
148 Verrada Street  
Portland, Maine 04108  
811-231-2249  
811-231-2248  
www.alliedeng.com  
Allied Project No.: 15018

**RSU 39 School Campus**  
Caribou - Maine - 04736

No.	Date	Description
1		Revision Schedule



JOB NO. 15018

DRWN, CHK DLL CAF

SCALE:

ISSUE: Confirmed Constructor Documents 6/14/2018

TITLE: LEVEL 1 - PART A POWER PLAN

SHEET

EP101a

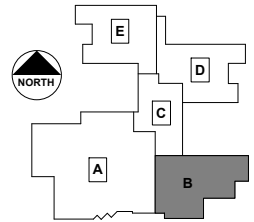
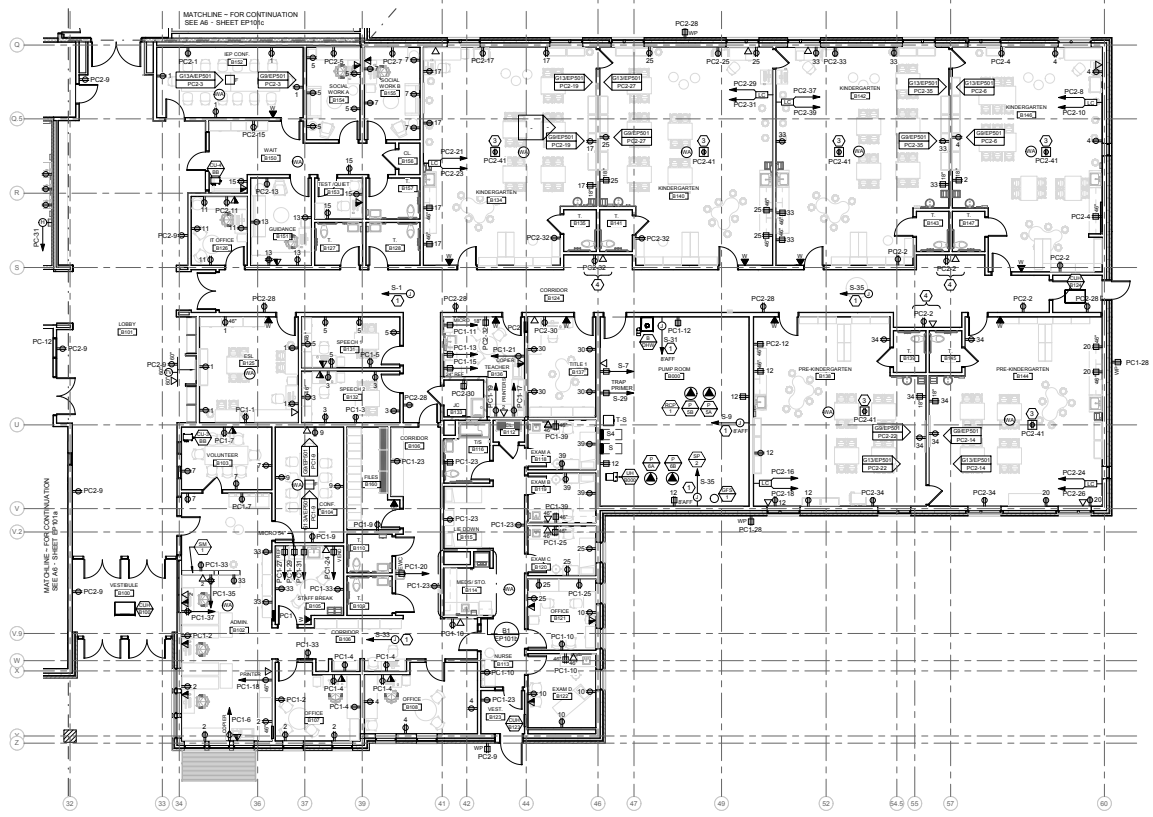
E

D

C

B

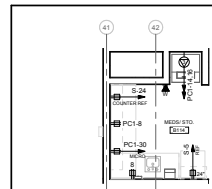
A



E1 KEY PLAN

- 1 PROVIDE JUNCTION BOX AND CIRCUIT FOR MECHANICAL CONTROLS. PROVIDE ABOVE CEILING EXCEPT IN AREAS WITHOUT CEILINGS PROVIDE AT UNDERSIDE OF DECK, UNO.
- 2 NOT USED
- 3 PROVIDE RECEPTACLE ABOVE CEILING FOR SOUND ENHANCEMENT SYSTEM.
- 4 MOUNT HORIZONTALLY 9" TO TOP.

D1 KEY NOTES



B1 MEDS/STORAGE B114

1/8" = 1'-0"

**PDT**  
ARCHITECTS  
49 GARTMOUTH STREET  
PORTLAND, MAINE 04101  
207-776-1659  
www.pdtarch.com

COPYRIGHT 2017  
PDT ARCHITECTS  
Re-use or reproduction of this  
document without written  
permission of PDT Architects.

**Allied Engineering**  
Mechanical, Electrical,  
Plumbing & Energy  
168 Veranda Street  
Portland, Maine 04103  
Tel: 207-253-2266  
Fax: 207-253-2266  
Web: www.alliedeng.com  
Allied Project No: 15018

RSU 39 School Campus  
Caribou - Maine - 04736

No.	Date	Description



JOB NO.  
15018

DRWN. CHK  
DLL CAF

SCALE:

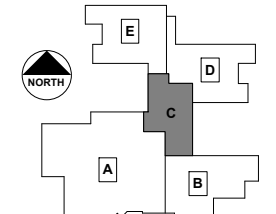
ISSUE  
Confirmed Construction  
Documents  
6/14/2018

TITLE  
LEVEL 1 - PART B  
POWER PLAN

SHEET  
EP101b

ELECTRICAL SCHEDULE FOR INNOVATION A AND INNOVATION B EQUIPMENT										
TAG	DESCRIPTION	BASIS OF DESIGN	VOLTS	PH	FLA	GFI RECEPT OR DISC SWITCH	OUNTING WALL 48" UNO	PANEL	WIRING IN CONDUIT (Ø12, 1Ø, 2Ø, UNO)	NOTES
EQBS	BANDSAW	WEN #3962	120	1	3.5	NEMA 5-20R	RAMP WALL 18"	P2		
EQMS	MITER SAW	EPFLOG HELIX	120	1	4	NEMA 5-20R	RAMP WALL 18"	P2		
EQTS	TABLE SAW	SAWSTOP 10" SAW	208	1	7	NEMA 5-20R	CORD REEL	NOTE 4		
EQDS	3D PRINTERS	MAKERBOT REPLICATOR	120	1	76	NEMA 5-20R		NOTE 5		3
EQW	WELDER	LINCOLN ELECTRIC MIG 180	208	1	24	NEMA 6-50R		P2	3 #8, 1Ø 100	
EQAL	LASER CUTTER	EPFLOG HELIX 24	120	1	4	NEMA 6-20R	WALL	P2		
EQS	SANDER		120	1	6	NEMA 6-20R	RAMP WALL 18"	P2		
EQK	KILN	SKUTT 1227	208	3	69	DISCONNECT SWITCH	WALL	P3	3 #2, 1Ø 80	6
EQHK	KILN HOOD	ENVROEVENT 2	120	1	2	NEMA 5-20R		P3		

NOTES:  
 1 WIRE AND CONNECT TO FACP  
 2 PROVIDE CORD AND FLUG  
 3 PROVIDE CATEGORY 6 CARLING AND DATA OUTLET AT EACH 3D PRINTER  
 4 PLUGS INTO RECEPTACLE ON CORD REEL THAT IS SHOWN ON PLANS  
 5 PLUGS INTO WALL RECEPTACLES ON PLANS  
 6 PROVIDE DISCONNECT: 100 AMP, FUSED AT 100 AMP, 3 POLE, 4 WIRE, NEMA 1



E1	KEY PLAN
①	PROVIDE JUNCTION BOX AND CIRCUIT FOR MECHANICAL CONTROL. PROVIDE ABOVE CEILING, EXCEPT IN AREAS WITHOUT CEILING. PROVIDE AT UNDERSIDE OF DECK, UNO.
②	PROVIDE EMPTY JUNCTION BOX MOUNTED 48" AFF FOR DOOR CONTROLS. PROVIDE 1.14" EMPTY CONDUIT WITH PULLSTRING, CONTROLS AND CONTROL WIRING BY OTHERS.
③	PROVIDE RECEPTACLE ABOVE CEILING FOR SOUND ENHANCEMENT SYSTEM.
④	FOR POWER REQUIREMENTS THAT ARE IN ADDITION TO THAT SHOWN ON THE FLOOR PLANS, REFER TO EQUIPMENT SCHEDULE FOR INNOVATION A AND INNOVATION B ON THIS SHEET.
⑤	INTERLOCK PANEL TO SHUT DOWN ALL POWER TO ROOM UPON OPERATION OF THE MANUAL SHUTDOWN SWITCH.
⑥	PROJECTOR - CONFIRM LOCATION PRIOR TO ROUGH-IN.

D1	KEY NOTES
----	-----------



49 BARTMOUTH STREET  
 PORTLAND, MAINE 04101  
 207-776-1659  
 www.pdtarch.com

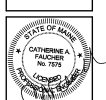
COPYRIGHT 2017  
 P.D.T. ARCHITECTS



148 Verrado Street  
 Portland, Maine 04101  
 P: 207.253.2249  
 F: 207.253.2248  
 Web: www.alliedeng.com  
 Allied Project No: 15018

RSU 39 School Campus  
 Caribou - Maine - 04736

No.	Date	Description
1		Revision Schedule



JOB NO. 15018

DRWN, CHK DLL CAF

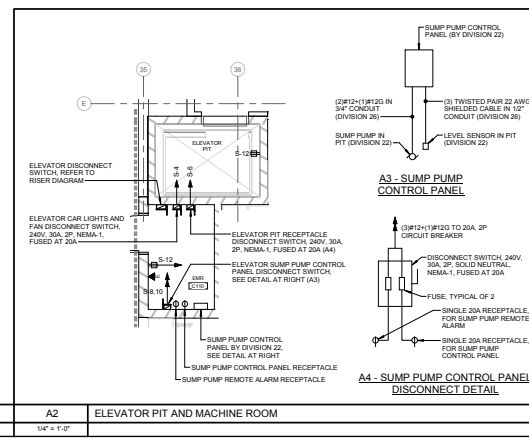
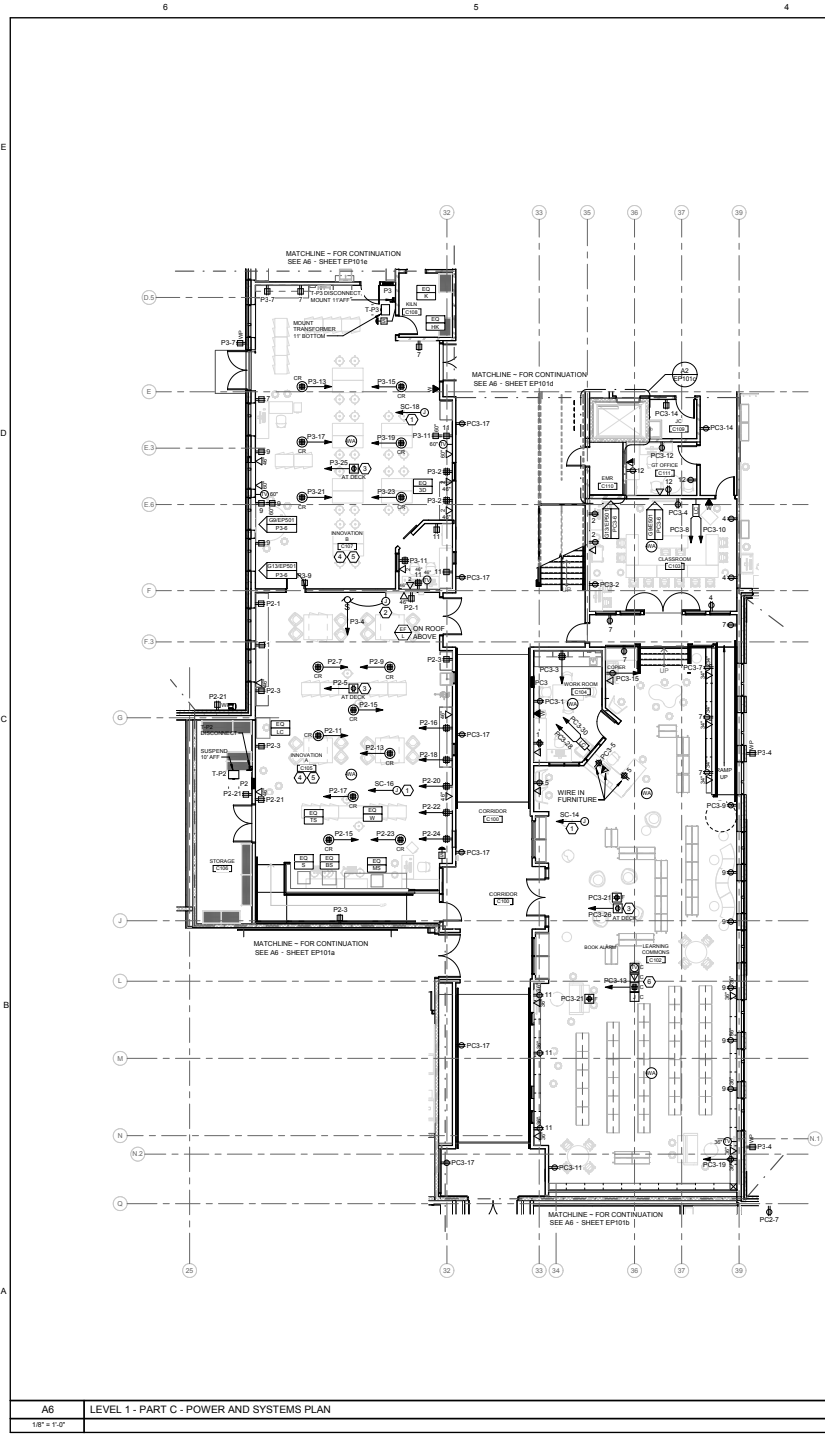
SCALE:

ISSUE: Confirmed Constructor Documents 6/14/2018

TITLE: LEVEL 1 - PART C POWER PLAN

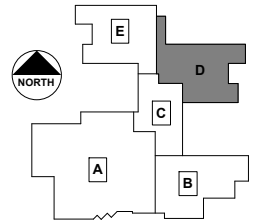
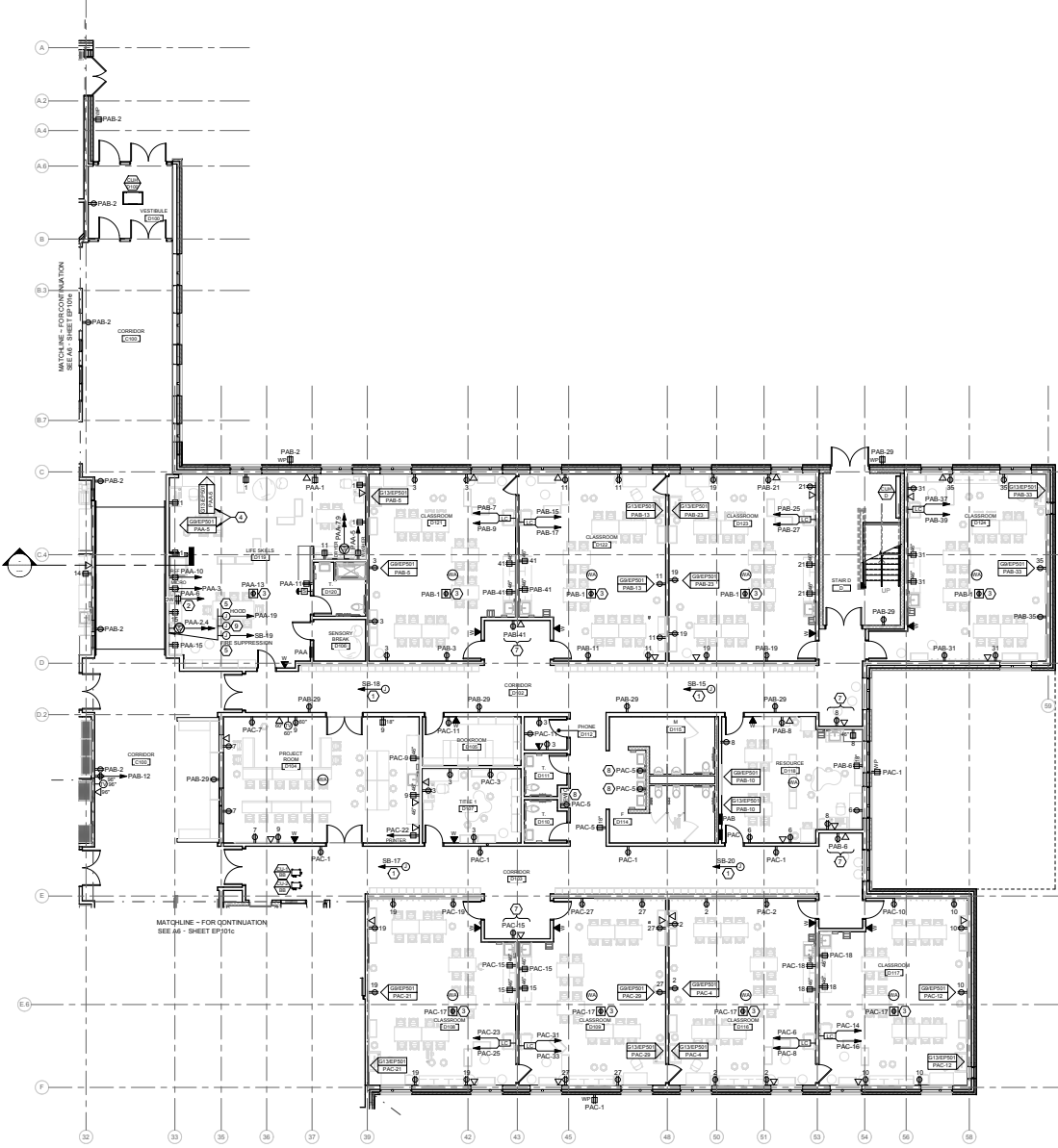
SHEET

EP101c



A6 LEVEL 1 - PART C - POWER AND SYSTEMS PLAN  
 1/8" = 1'-0"

A2 ELEVATOR PIT AND MACHINE ROOM  
 1/8" = 1'-0"



**PDT**  
ARCHITECTS  
49 DARTMOUTH STREET  
PORTLAND, MAINE 04101  
207-776-1059  
www.pdtarch.com

COPYRIGHT 2017  
PDT ARCHITECTS  
Re-use or reproduction of this  
document without written  
permission of PDT Architects.

**Allied Engineering**  
Mechanical, Electrical,  
Plumbing & Construction  
168 Veranda Street  
Portland, Maine 04108  
531-231-2249  
531-231-2248  
Web: www.allied-engineer.com  
Allied Project No: 15018

E1 KEY PLAN

- 1 PROVIDE JUNCTION BOX AND CIRCUIT FOR MECHANICAL CONTROL. PROVIDE ABOVE CEILING. IN AREAS WITHOUT CEILING PROVIDE AT UNDERSIDE OF DECK. LAND.
- 2 MOUNT DISHWASHER RECEPTACLE IN LEFT SIDE FRONT OF SINK BASE CABINET
- 3 PROVIDE RECEPTACLE ABOVE CEILING FOR SOUND ENHANCEMENT SYSTEM
- 4 FOR THIS ROOM, RECEPTACLES SHOWN ON DETAIL 09 AND 011 SHALL BE GFI.
- 5 INTERLOCK TO SHUT DOWN POWER TO THE ROOM VIA THE SHUNT TRIP UPON FIRE ALARM. FIRE SUPPRESSION SYSTEM OPERATION, OR OPERATION OF MANUAL POWER SHUT-OFF SWITCH
- 6 PROVIDE EMPTY CONDUIT WITH PULLSTRING FOR FUTURE RACON PANEL. RUN EMPTY CONDUIT FROM 2" ABOVE PANEL LOCATION TO ROOF AND STUB CONDUIT 3" ABOVE ROOF AND CAP.
- 7 MOUNT HORIZONTALLY 12" AFF TO TOP.
- 8 RECEPTACLES FOR EWC AND FAUCETS SHALL BE WIRED DOWNSTREAM OF THE GFI ON THE CIRCUIT.
- 9 PROVIDE 1-GANG BOX WITH 1" CONDUIT STUBBED 6" ABOVE CEILING FOR HOOD TIMER CONTROL. COORDINATE EXACT LOCATION WITH ARCHITECT.

D1 KEY NOTES

RSU 39 School Campus  
Caribou - Maine - 04736

No. Date Description  
Revision Schedule



JOB NO.  
15018

DRWN, CHK CAF

SCALE:

ISSUE  
Confirmed Construction  
Documents  
6/14/2018

TITLE  
LEVEL 1 - PART D  
POWER PLAN

SHEET  
EP101d

6 5 4 3 2

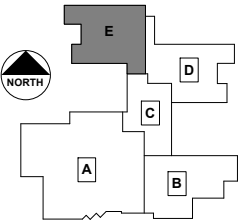
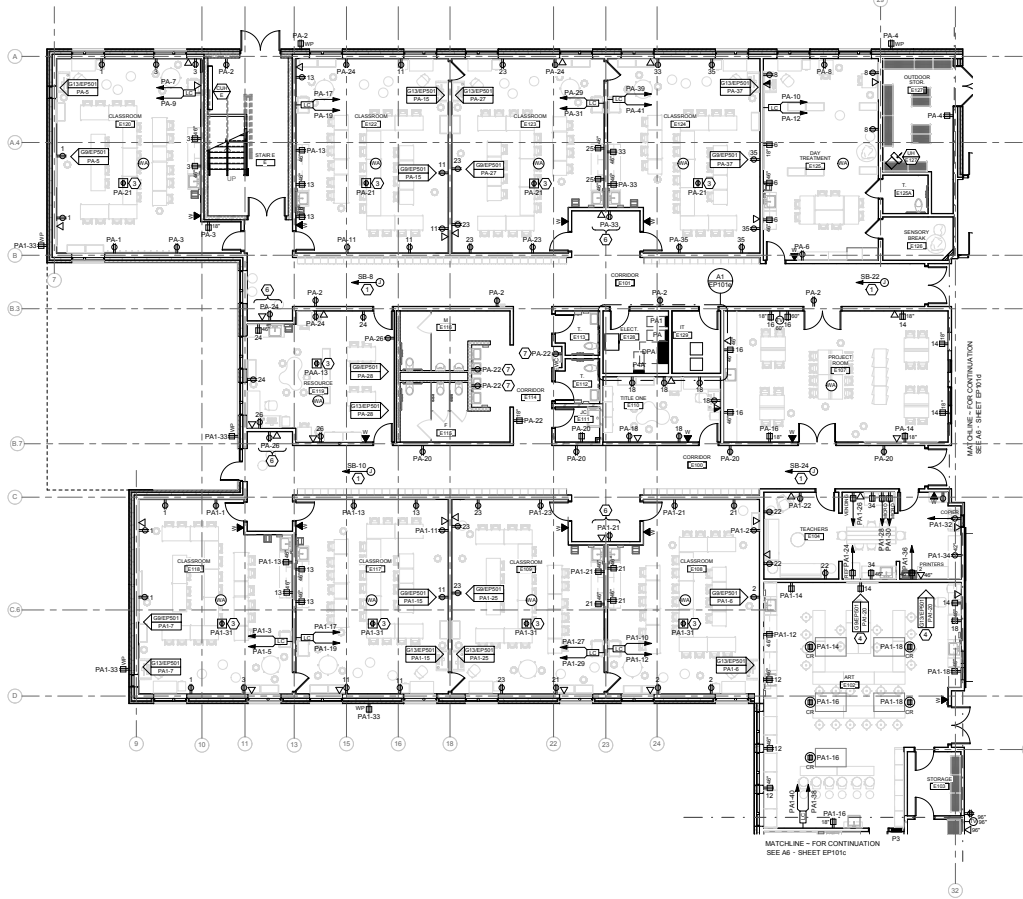
E

D

C

B

A



E1	KEY PLAN
<p>① PROVIDE JUNCTION BOX AND CIRCUIT FOR MECHANICAL CONTROL. PROVIDE ABOVE CEILING IN AREAS WITHOUT CEILING. PROVIDE AT UNDERSIDE OF DECK, ETC.</p> <p>② 3/4" 4# FIRE RETARDANT PLYWOOD BACKBOARD, PAINT BOTH SIDES WITH 2 COATS OF BLACK SATIN LATEX PAINT</p> <p>③ PROVIDE RECEPTACLE ABOVE CEILING FOR SOUND ENHANCEMENT SYSTEM</p> <p>④ FOR THIS ROOM, RECEPTACLES SHOWN ON DETAIL G9 AND G13 SHALL BE GFCI.</p> <p>⑤ PROVIDE CONDUIT BLEEVES. REFER TO DETAIL B1#EP901 FOR QUANTITY AND SIZES OF BLEEVES</p> <p>⑥ MOUNT HORIZONTALLY 12" AFF TO TOP.</p> <p>⑦ RECEPTACLES FOR EWC AND FAUCETS SHALL BE WIRED DOWNSTREAM OF THE GFI ON THE CIRCUIT.</p>	
D1	KEY NOTES



COPYRIGHT 2017  
PDT ARCHITECTS  
Re-use or reproduction of any  
contents of this document is not  
permitted without written  
permission of PDT Architects.



Allied Project No: 15018

RSU 39 School Campus  
Caribou - Maine - 04736

No.	Date	Description
Revision Schedule		



JOB NO. 15018

DRWN. CHK DLL CAF

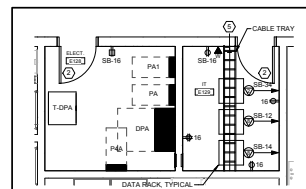
SCALE:

ISSUE Confirmed Construction Documents 9/14/2018

TITLE LEVEL 1 - PART E POWER PLAN

SHEET

EP101e



A1 ENLARGED PLAN  
1/4" = 1'-0"

A6 LEVEL 1 - PART E - POWER AND SYSTEMS PLAN  
1/4" = 1'-0"

6 5 4 3 2

6

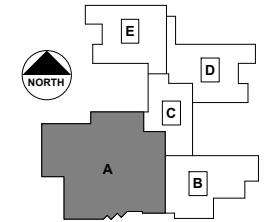
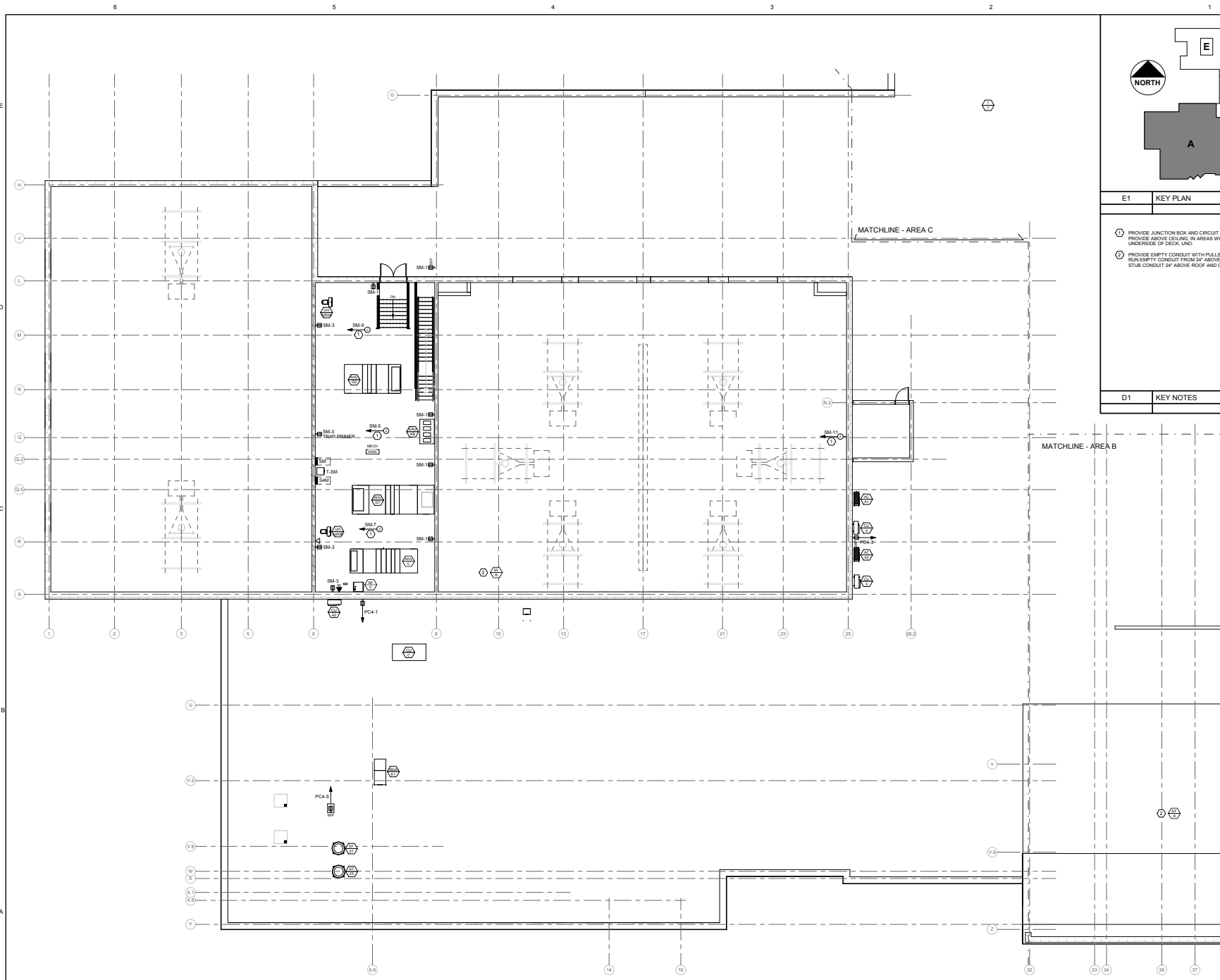
5

4

3

2

1



E1	KEY PLAN
<p>① PROVIDE JUNCTION BOX AND CIRCUIT FOR MECHANICAL CONTROL. PROVIDE ABOVE CEILING IN AREAS WITHOUT CEILINGS PROVIDE AT UNDERSIDE OF DECK UNIC.</p> <p>② PROVIDE EMPTY CONDUIT WITH PULLSTRING FOR FUTURE RADON FANS. RUN EMPTY CONDUIT FROM 24" ABOVE PANEL LOCATION TO ROOF AND STUB CONDUIT 24" ABOVE ROOF AND CAP.</p>	
D1	KEY NOTES

**PDT**  
ARCHITECTS  
49 GARTMOUTH STREET  
PORTLAND, MAINE 04101  
207-776-1659  
www.pdtarch.com

COPYRIGHT 2017  
PDT ARCHITECTS  
Re-use or reproduction of this  
document without written  
permission of PDT Architects.

**Allied Engineering**  
Civil, Mechanical,  
Electrical, Construction  
168 Veranda Street  
Portland, Maine 04103  
503.253.2249  
503.253.2248  
Web: www.allied-eng.com  
Allied Project No: 15018

RSU 39 School Campus  
Caribou - Maine - 04736

No.	Date	Description
B		Revision Schedule



JOB NO.  
15018

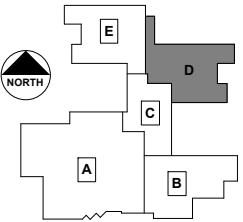
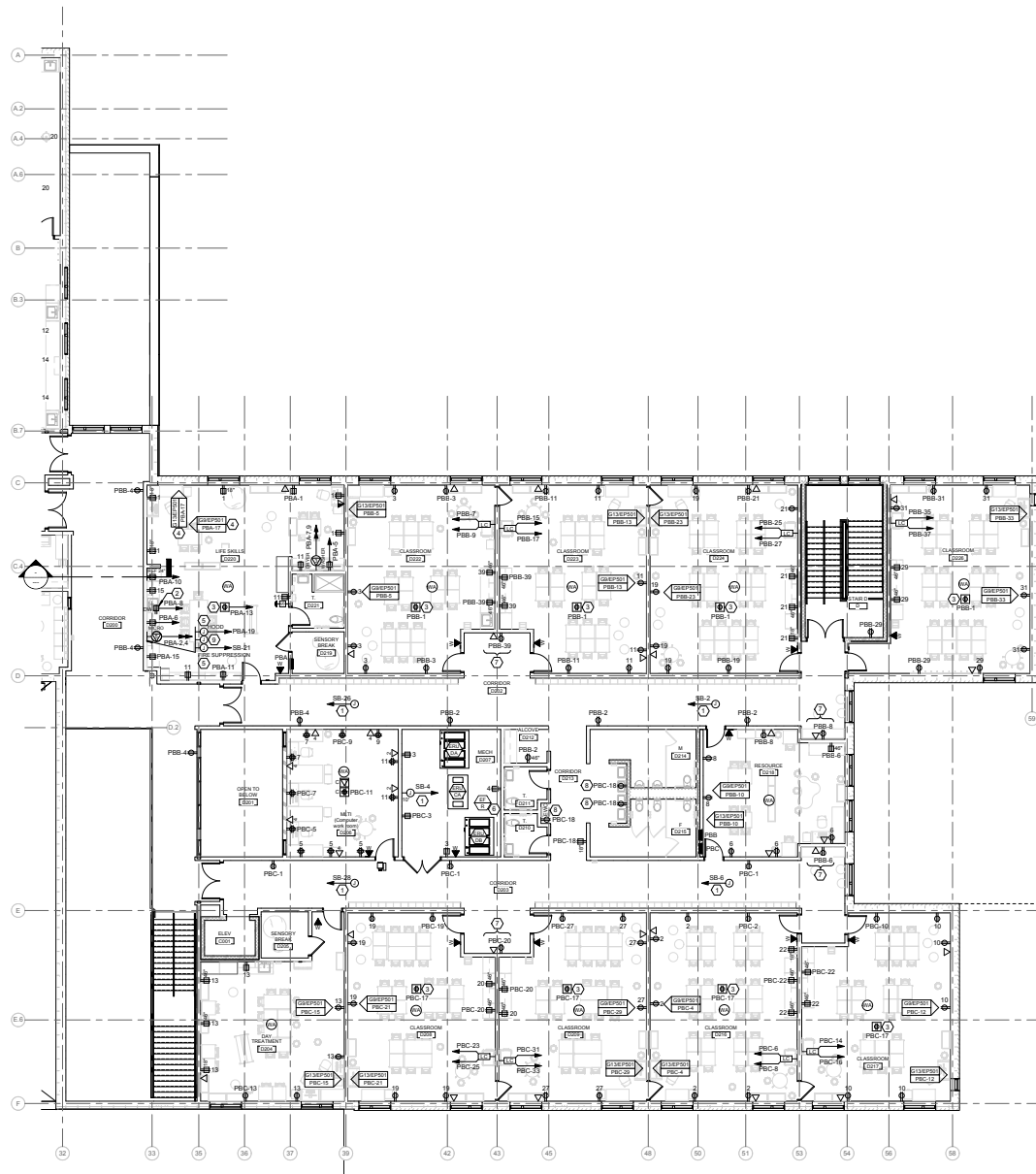
DRWN, CHK  
DLL CAF

SCALE:

ISSUE  
Confirmed Construction  
Documents  
6/14/2018

TITLE  
LEVEL 2 - PART A  
POWER PLAN

SHEET  
EP102a



E1 KEY PLAN

- ① PROVIDE JUNCTION BOX AND CIRCUIT FOR MECHANICAL CONTROL. PROVIDE ABOVE CEILING, IN AREAS WITHOUT CEILINGS PROVIDE AT UNDERSIDE OF DECK, UNO.
- ② MOUNT DISHWASHER RECEPTACLE IN LEFT SIDE FRONT OF SINK BASE CABINET.
- ③ PROVIDE RECEPTACLE ABOVE CEILING FOR SOUND ENHANCEMENT SYSTEM.
- ④ FOR THIS ROOM, RECEPTABLES SHOWN ON DETAIL 09 AND 013 SHALL BE GFCI.
- ⑤ INTERLOCK TO SHUT DOWN POWER TO THE ROOM VIA THE SHUNT-TRIP UPON FIRE ALARMS, MANUAL POWER SHUT-OFF SWITCH, OR FIRE SUPPRESSION SYSTEM OPERATION.
- ⑥ PROVIDE EMPTY CONDUIT WITH PULLSTRING FOR FUTURE RADON FANS. RUN EMPTY CONDUIT FROM F ABOVE PANEL LOCATION TO ROOF AND STUB CONDUIT AT ABOVE ROOF AND GAF.
- ⑦ MOUNT HORIZONTALLY 15" AFF TO TOP.
- ⑧ RECEPTABLES FOR EWC AND FAUCETS SHALL BE WIRED DOWNSTREAM OF THE GFI ON THE CIRCUIT.
- ⑨ PROVIDE 1-GANG BOX WITH 1" CONDUIT STUBBED IN ABOVE CEILING FOR HOOD TIMER CONTROL. COORDINATE EXACT LOCATION WITH ARCHITECT.

D1 KEY NOTES



COPYRIGHT 2017  
PDT ARCHITECTS  
Re-use or reproduction of this  
document is prohibited without the  
permission of PDT Architects.



Allied Project No: 15018

RSU 39 School Campus  
Caribou - Maine - 04736

No.	Date	Description
1		Revision Schedule



JOB NO.  
15018

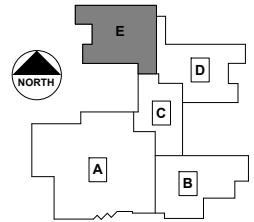
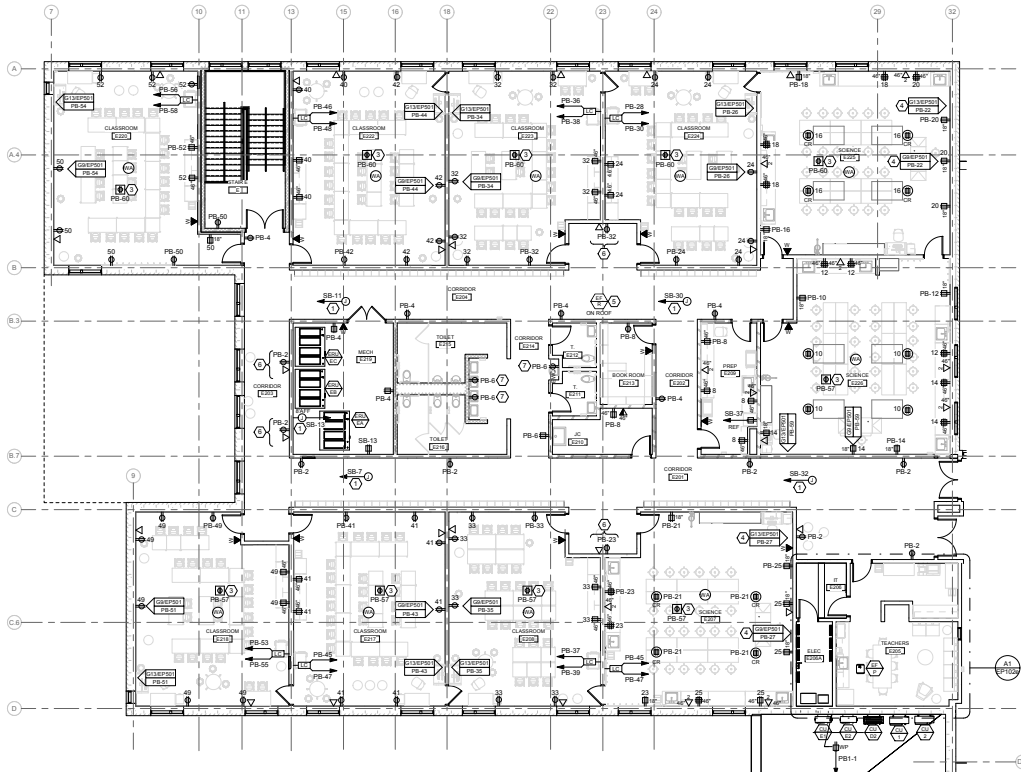
DRWN, CHK  
DLL CAF

SCALE:

ISSUE  
Confirmed Construction  
Documents  
6/14/2018

TITLE  
LEVEL 2 - PART D  
POWER PLAN

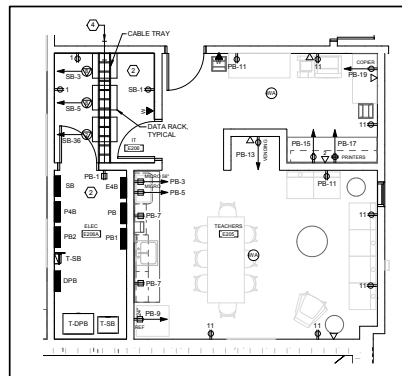
SHEET  
EP102d



E1 KEY PLAN

- ① PROVIDE JUNCTION BOX AND CIRCUIT FOR MECHANICAL CONTROL. PROVIDE ABOVE CEILING. IN AREAS WITHOUT CEILINGS PROVIDE AT UNDERSIDE OF DESK. UND.
- ② 3/4" x 48" FIRE RETARDANT PLYWOOD BACKBOARD. PAINT BOTH SIDES WITH 2 COATS OF BLACK SATIN LATEX PAINT 3/4" x 48" FIRE RETARDANT PLYWOOD BACKBOARD. PAINT BOTH SIDES WITH 2 COATS OF BLACK SATIN LATEX PAINT.
- ③ PROVIDE RECEPTACLE ABOVE CEILING FOR SOUND ENHANCEMENT SYSTEM
- ④ PROVIDE CONDUIT SLEEVES. REFER TO DETAIL 91EPS01 FOR QUANTITY AND SIZES OF SLEEVES.
- ⑤ PROVIDE EMPTY CONDUIT WITH PULLSTRING FOR FUTURE RADON FANS. RUN EMPTY CONDUIT FROM IF ABOVE PANEL LOCATION TO ROOF AND STUB CONDUIT 34" ABOVE ROOF AND CAP.
- ⑥ MOUNT HORIZONTALLY 15" AFF TO TOP.
- ⑦ RECEPTACLES FOR EWC AND FAUCETS SHALL BE WIRED DOWNSTREAM OF THE GFI ON THE CIRCUIT.

D1 KEY NOTES



A1 ENLARGED PART PLAN



49 GARTMOUTH STREET  
PORTLAND, MAINE 04101  
207-778-1659  
www.pdtarch.com



168 Verranda Street  
Portland, Maine 04108  
531-231-2269  
531-231-2268  
Web: www.allied-eng.com  
Allied Project No: 15018

RSU 39 School Campus  
Caribou - Maine - 04736

No.	Date	Description
1		Revision Schedule



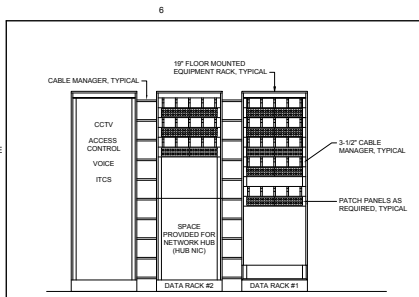
JOB NO.  
15018  
DRWN, CHK  
DLL CAF  
SCALE:  
ISSUE  
Confirmed Construction  
Documents  
6/14/2018

TITLE  
LEVEL 2 - PART E  
POWER PLAN

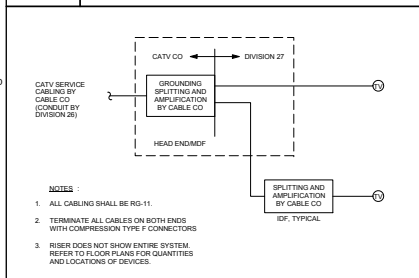
SHEET  
EP102e

A6 LEVEL 2 - PART E POWER AND SYSTEMS PLAN  
1/8" = 1'-0"

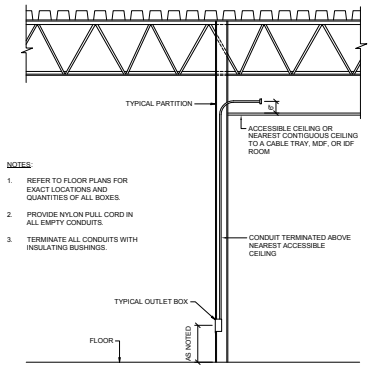




D6 TYPICAL EQUIPMENT RACKS

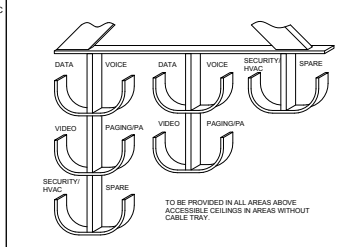


B6 CATV RISER DIAGRAM



B5 BUS DROP DETAIL

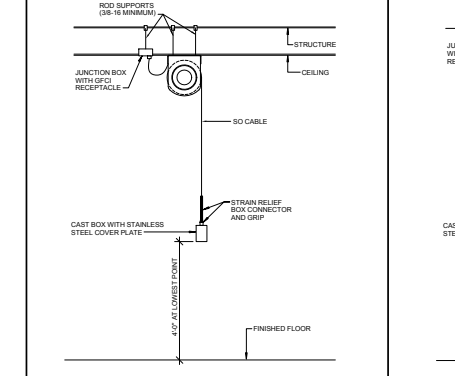
- NOTES:
1. REFER TO FLOOR PLANS FOR EXACT LOCATIONS AND QUANTITIES OF ALL BOXES.
  2. PROVIDE NYLON PULL CORD IN ALL EMPTY CONDUITS.
  3. TERMINATE ALL CONDUITS WITH INSULATING BUSHINGS.



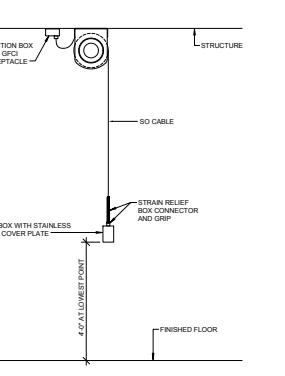
B6 TYPICAL CABLE SUPPORT DETAIL

- LEGEND:
- DATA: ○ DATA, ○ VOICE, ○ VIDEO, ○ ITCS (SHIELDED CABLE), ○ OTHER SERVICES
  - VOICE: ○ VOICE, ○ ITCS (SHIELDED CABLE), ○ OTHER SERVICES
  - VIDEO: ○ VIDEO, ○ ITCS (SHIELDED CABLE), ○ OTHER SERVICES
  - SECURITY: ○ SECURITY, ○ HVAC, ○ SPARE
  - OTHER SERVICES: ○ DATA, ○ VOICE, ○ VIDEO, ○ ITCS (SHIELDED CABLE), ○ OTHER SERVICES
  - OTHER SERVICES: ○ DATA, ○ VOICE, ○ VIDEO, ○ ITCS (SHIELDED CABLE), ○ OTHER SERVICES

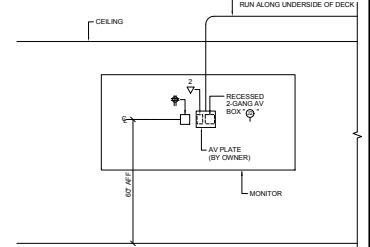
B5 THROUGH-WALL SLEEVE DETAIL



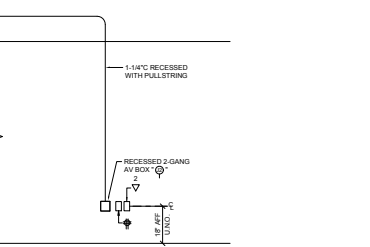
A5 OVERHEAD DROP FOR ROOMS WITH CEILINGS



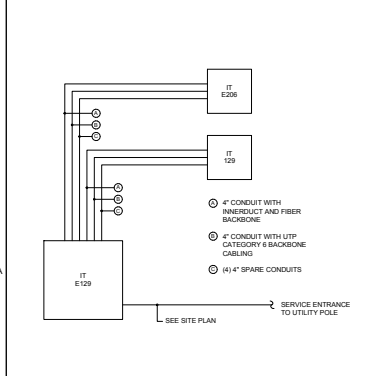
A4 OVERHEAD DROP FOR ROOMS WITHOUT CEILINGS



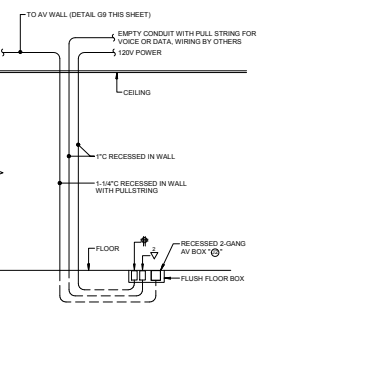
G9 AV WALL DETAIL



G13 AV CONTROLS LOCATION

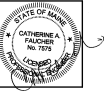


A6 BACKBONE RISER



G13A AV, POWER, DATA CONTROLS FLOOR LOCATION

No.	Date	Description



JOB NO.	15018
DRWN.	CHK DLL CAF
SCALE:	NONE

ISSUE: Confirmed Construction Documents 9/14/2018

TITLE: ELECTRICAL DETAILS

SHEET: EP501