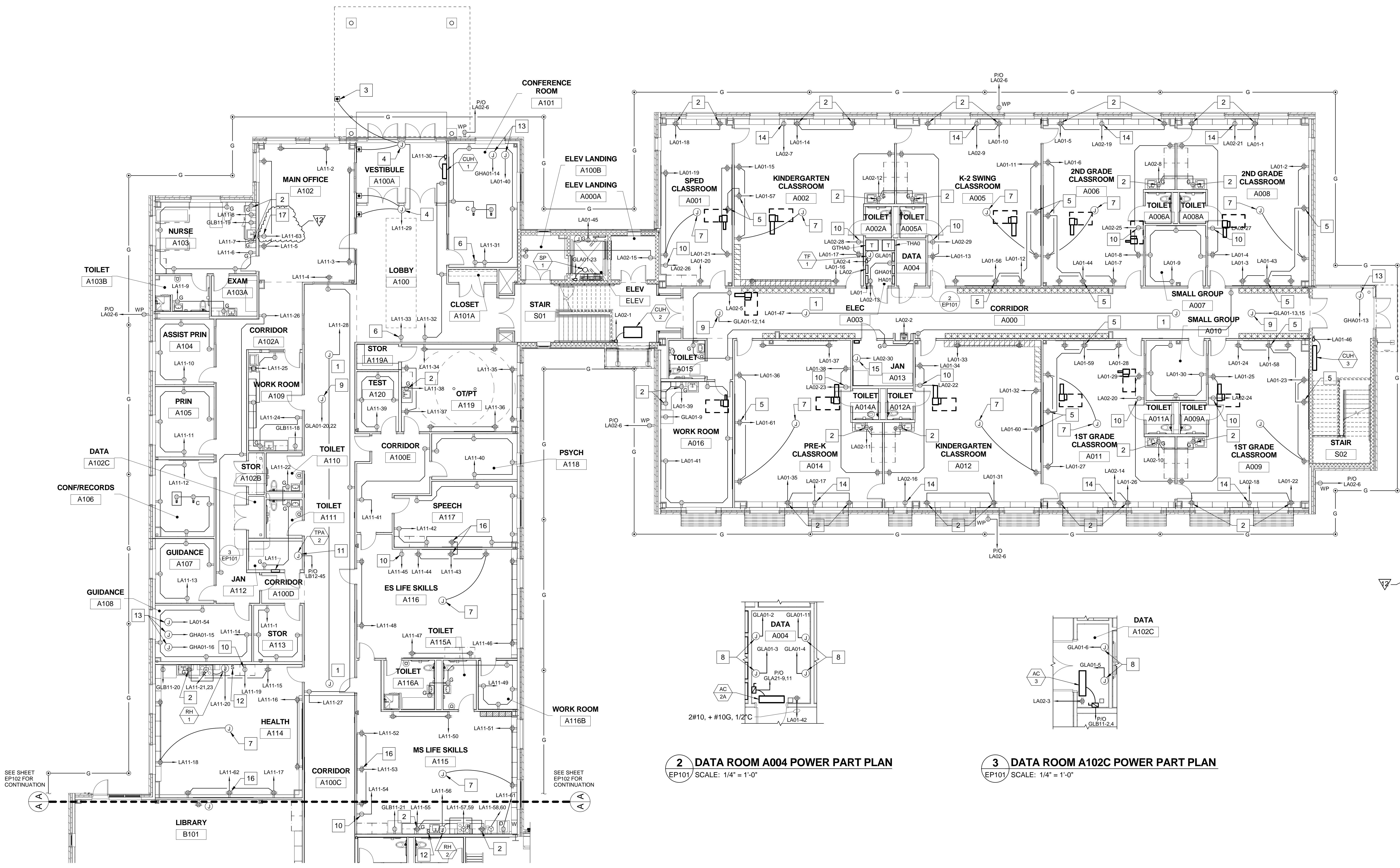


DRAWING NOTE

- BOND GROUND RING TO STRUCTURAL STEEL. CONCEAL BONDING AND GROUNDING CONDUCTORS.

DRAWING KEYNOTES

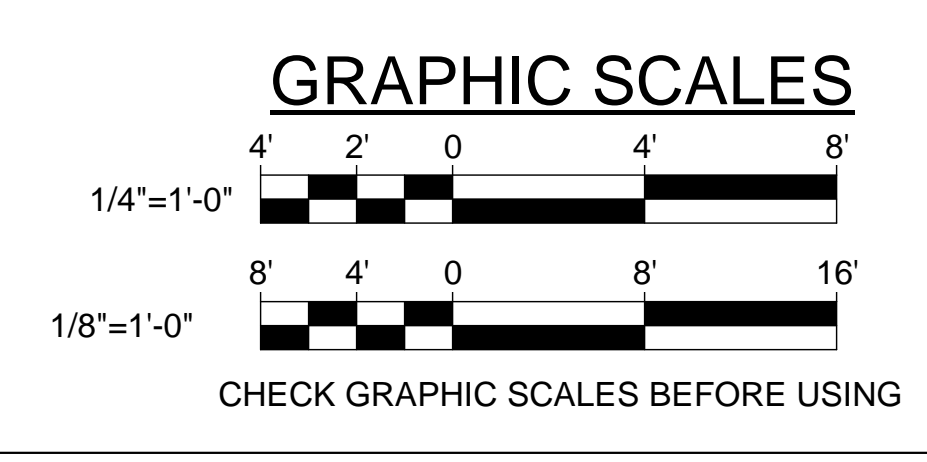
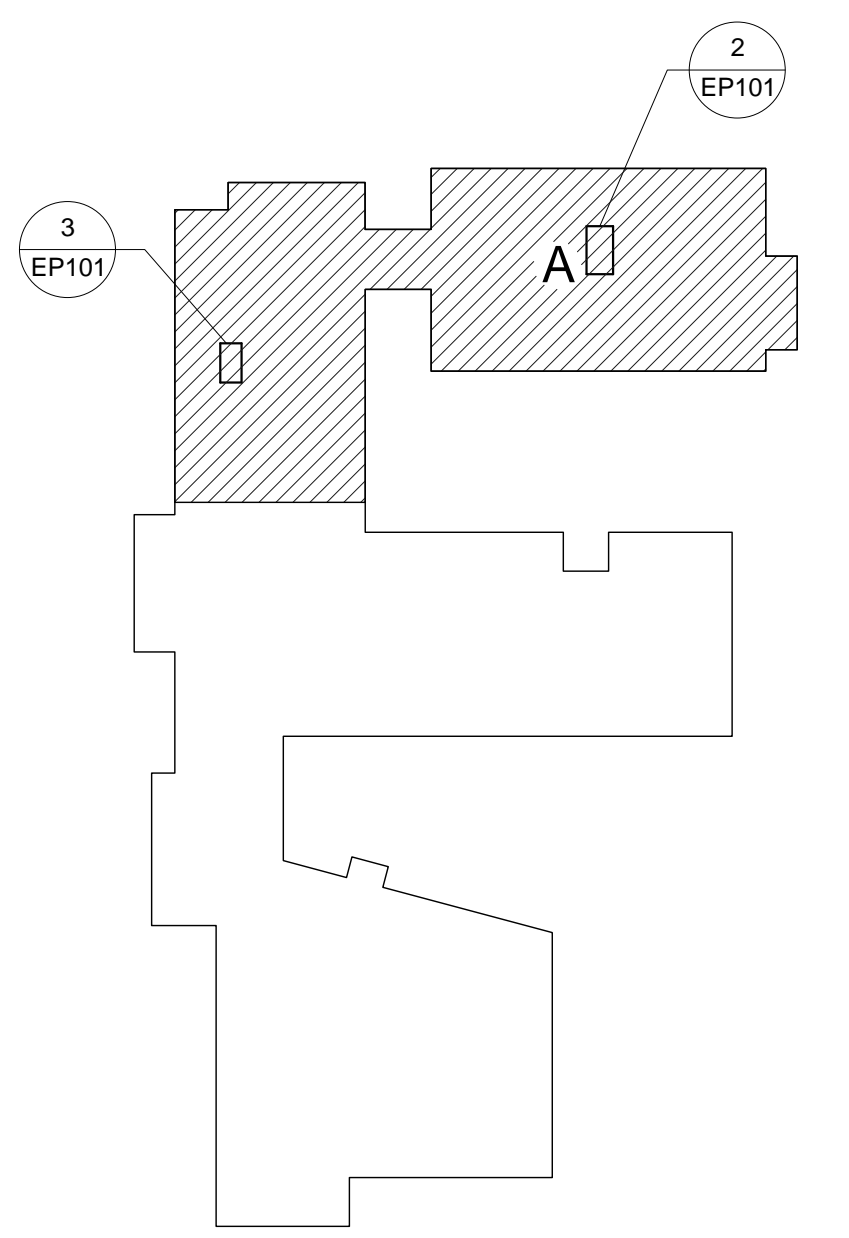
- 120 VOLT POWER FOR VAV/CAV BOXES. FIELD COORDINATE FINAL LOCATIONS.
- MOUNT RECEPTACLE 6" ABOVE CASEWORK/BACKSPLASH. FIELD COORDINATE FINAL LOCATION.
- PROVIDE PEDESTAL MOUNTED DOOR BUTTON, UNDERGROUND CONDUIT, AND WIRING FOR HANDICAP DOOR OPERATOR. FIELD COORDINATE FINAL LOCATION.
- 120 VOLT POWER FOR HANDICAP DOOR OPERATOR. PROVIDE COMPLETE AND FUNCTIONAL SYSTEM. INTEGRATE WITH ACCESS CONTROL SYSTEM. FIELD COORDINATE FINAL LOCATION.
- MOUNT RECEPTACLE AT 108" AFF. CENTER ABOVE WHITEBOARD/SMARTBOARD AND ACOUSTICAL PANELING.
- 120 VOLT POWER FOR LCD DISPLAY AT 80" AFF. FIELD COORDINATE FINAL LOCATION.
- 120 VOLT POWER FOR CLASSROOM AUDIO SYSTEM. COORDINATE FINAL LOCATION WITH AUDIO SYSTEM INSTALLER.
- PROVIDE L5-30R TWISTLOCK TYPE RECEPTACLE. PROVIDE 2#10, + #10G, 1/2"C.
- 208 VOLT POWER FOR HEAT TRACE. COORDINATE FINAL LOCATION WITH MECHANICAL TRADE.
- PROVIDE RECEPTACLE FOR ELECTRONIC DEVICE CHARGING CABINET. COORDINATE FINAL LOCATION WITH ARCHITECTURAL TRADE.
- 120 VOLT POWER FOR TRAP PRIMERS. FIELD COORDINATE FINAL LOCATION.
- PROVIDE LINE VOLTAGE TOGGLE SWITCH FOR REMOTE CONTROL OF EXHAUST FAN ON ROOF.
- POWER FOR SITE LIGHTING. CONDUIT AND WIRING SHALL BE RUN UNDERSLAB TO SOURCE PANELBOARD.
- MOUNT RECEPTACLE IN CASEWORK AT 24" AFF. COORDINATE FINAL LOCATION WITH ARCHITECTURE.
- 120 VOLT POWER FOR SUMP PUMP ALARM PANEL. COORDINATE FINAL LOCATION WITH MECHANICAL TRADE.
- MOUNT RECEPTACLE AT 101" AFF. MOUNT 1" OFF CENTER ABOVE WHITEBOARD/SMARTBOARD AND ACOUSTICAL PANELING.
- 120V POWER FOR BUS RADIO. COORDINATE FINAL LOCATION AND RADIO CIRCUIT REQUIREMENTS.



2 DATA ROOM A004 POWER PART PLAN
EP101 SCALE: 1/4" = 1'-0"

3 DATA ROOM A102C POWER PART PLAN
EP101 SCALE: 1/4" = 1'-0"

1 FIRST FLOOR POWER PART PLAN WING A
EP101 SCALE: 1/8" = 1'-0"



NO.	DATE	DESCRIPTION	BY	NO.	DATE	DESCRIPTION	BY
12	10/16/19	RFP #57	MHL				
8	05/14/19	RFP #17R	MHL				
4	04/19/19	RFP #17	MHL				

REVISIONS

READY FOR CONSTRUCTION DATE 07/05/18

KEYPLAN
NOT TO SCALE

PLAN NORTH

STATE OF MAINE
PUBLIC SCHOOL PROJECT

TITLE: MONMOUTH ELEMENTARY / MIDDLE SCHOOL - RSU 2
LOCATION: MONMOUTH, ME
TITLE THIS DWG: FIRST FLOOR POWER PART PLAN WING A

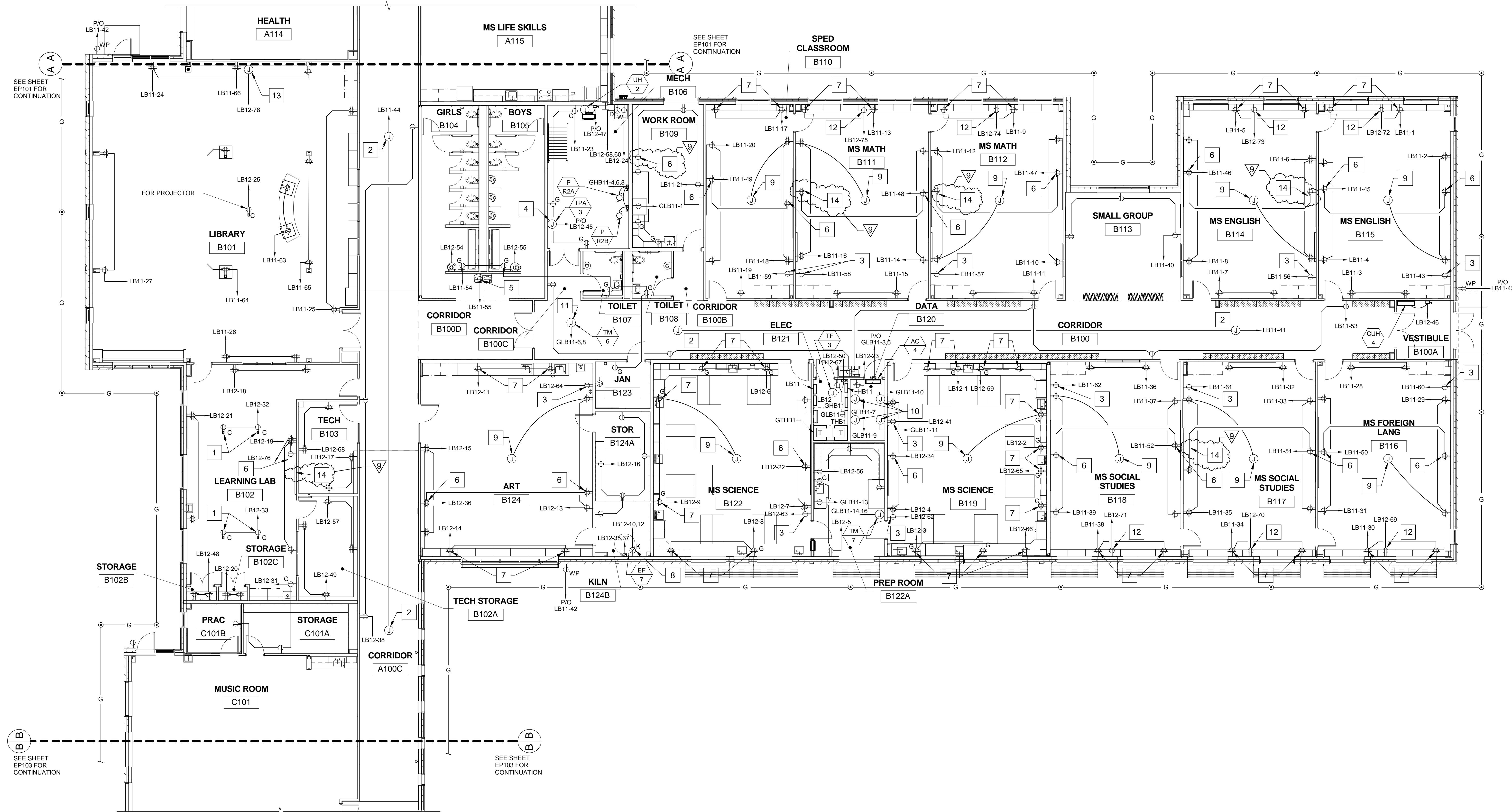
OAK POINT ASSOCIATES
DRAWING NO. EP101
SHEET NO. 248 OF 275

DRAWING NOTE

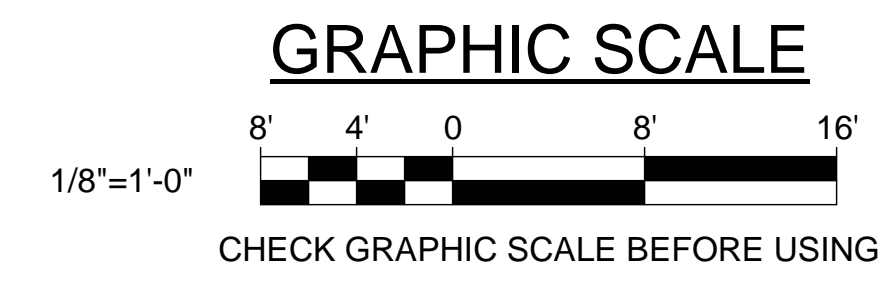
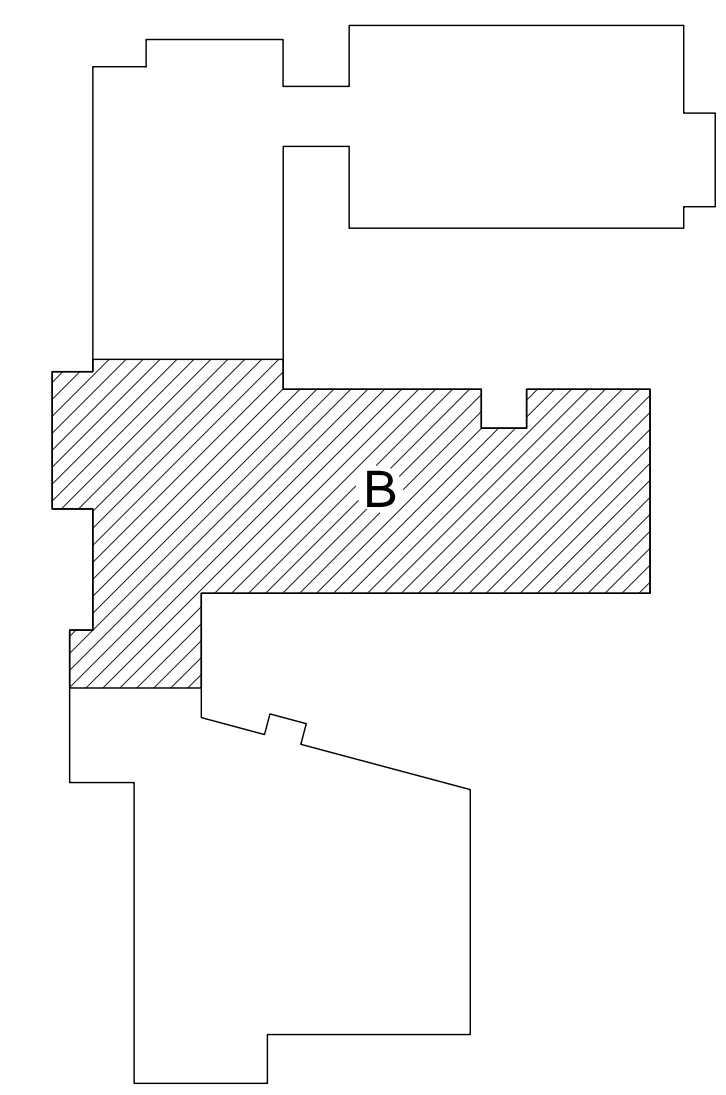
- BOND GROUND RING TO STRUCTURAL STEEL. CONCEAL BONDING AND GROUNDING CONDUCTORS.

DRAWING KEYNOTES

- PROVIDE CEILING MOUNTED RECEPTACLE AND POWER REEL.
- 120 VOLT POWER FOR VAV/CAV BOXES. FIELD COORDINATE FINAL LOCATIONS.
- PROVIDE RECEPTACLE FOR ELECTRONIC DEVICE CHARGING CABINET. COORDINATE FINAL LOCATION WITH ARCHITECTURAL TRADE..
- 120 VOLT POWER FOR TRAP PRIMERS. FIELD COORDINATE FINAL LOCATION.
- 120 VOLT POWER FOR WATER COOLER. FIELD COORDINATE FINAL LOCATION.
- MOUNT RECEPTACLE AT 108" AFF. CENTER ABOVE WHITEBOARD/SMARTBOARD AND ACOUSTICAL PANELING.
- MOUNT RECEPTACLE 6" ABOVE CASEWORK/BACKSPLASH. FIELD COORDINATE FINAL LOCATION.
- PROVIDE SHUNT TRIP/EMERGENCY SHUTDOWN.
- 120 VOLT POWER FOR CLASSROOM AUDIO SYSTEM. COORDINATE FINAL LOCATION WITH AUDIO SYSTEM INSTALLER.
- PROVIDE L5-30R TWISTLOCK TYPE RECEPTACLE. PROVIDE 2#10 + #10G, 1/2"C.
- 208 VOLT POWER FOR HEAT TRACE. COORDINATE FINAL LOCATION WITH MECHANICAL TRADE.
- MOUNT RECEPTACLE IN CASEWORK AT 24" AFF. COORDINATE FINAL LOCATION WITH ARCHITECTURE.
- 120V POWER FOR MOTORIZED PROJECTION SCREEN. FIELD COORDINATE FINAL LOCATION. PROVIDE CONCEALED CONDUIT AND DEVICE BOX.
- 120V POWER FOR SMART TV AT 80" AFF. FIELD COORDINATE FINAL LOCATION.



1 FIRST FLOOR POWER PART PLAN WING B
EP102 SCALE: 1/8" = 1'-0"



KEYPLAN
NOT TO SCALE

**STATE OF MAINE
PUBLIC SCHOOL PROJECT**

TITLE: MONMOUTH ELEMENTARY / MIDDLE SCHOOL - RSU 2
LOCATION: MONMOUTH, ME
TITLE THIS DWG:
FIRST FLOOR POWER PART PLAN WING B

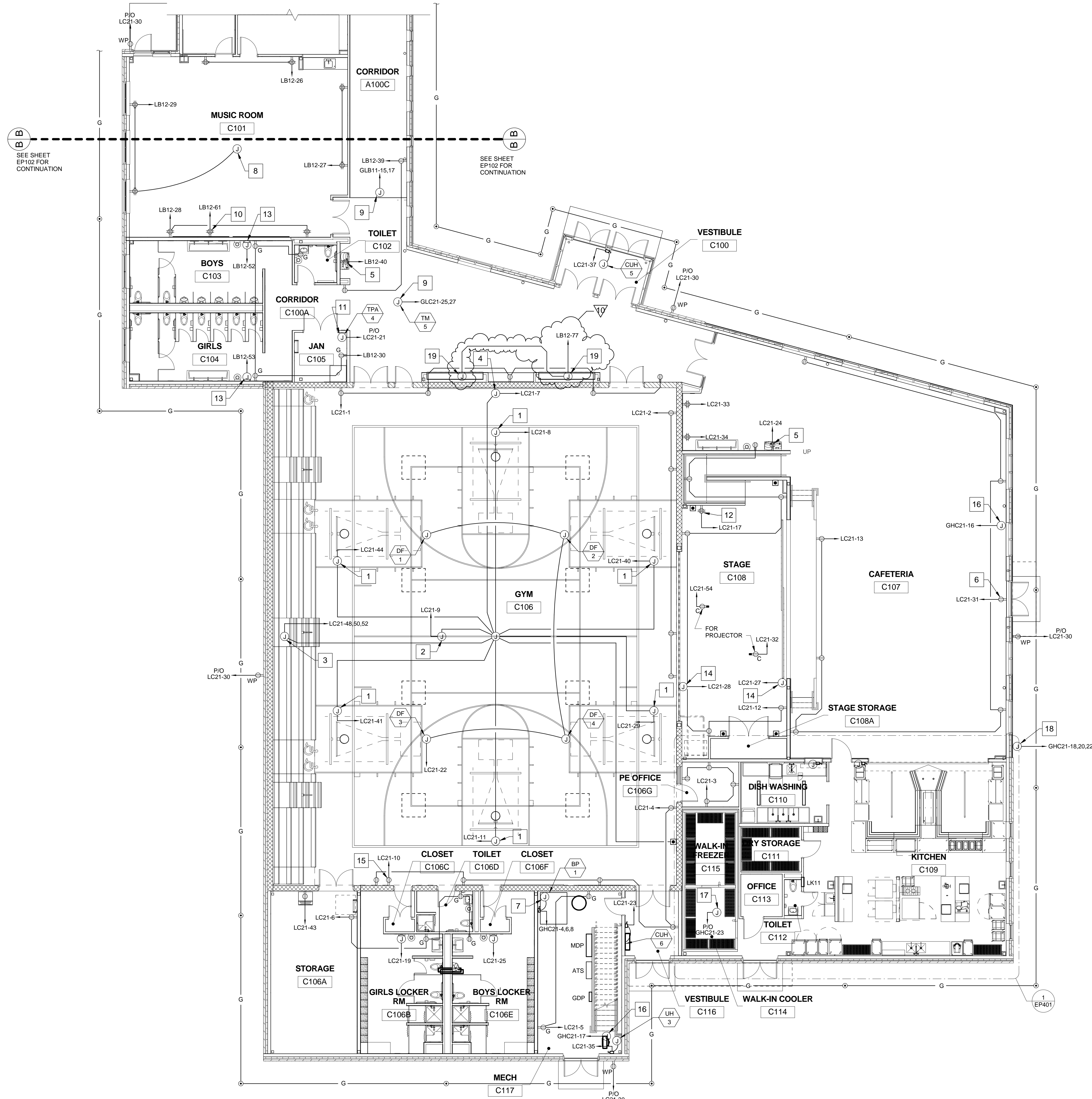
OAK POINT ASSOCIATES
DRAWING NO. EP102
SHEET NO. 249 OF 275

NO.	DATE	DESCRIPTION	BY	CHECK BY
9	05/14/19	RFP #17R	MHL	
7	05/03/19	RFP #21R	MHL	
5	04/24/19	RFP #21	MHL	
4	04/19/19	RFP #17	MHL	
3	01/17/19	ASI Z7		

REVISIONS

NO.	DATE	DESCRIPTION	BY	CHECK BY

READY FOR CONSTRUCTION DATE 07/05/18



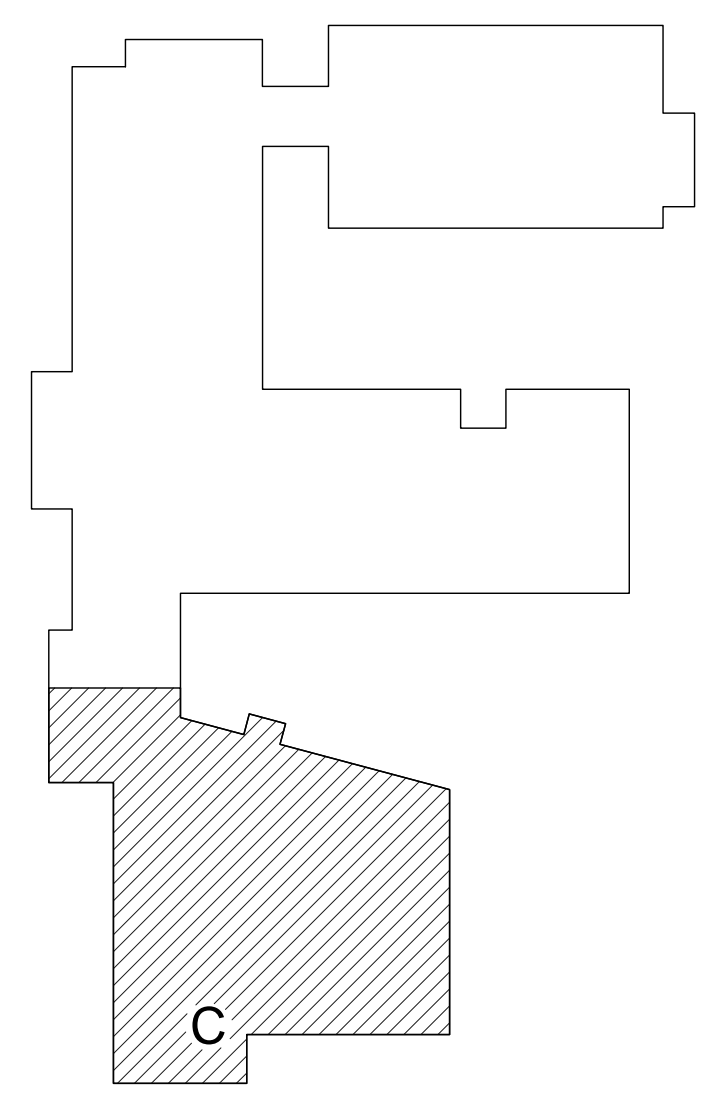
1 FIRST FLOOR POWER PART PLAN WING C
 EP103 SCALE: 1/8" = 1'-0"

DRAWING NOTE

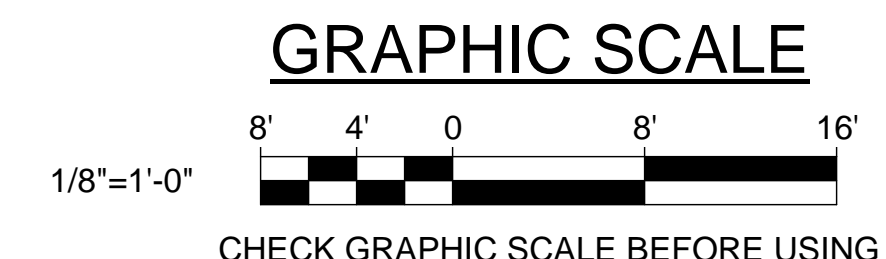
1. BOND GROUND RING TO STRUCTURAL STEEL. CONCEAL BONDING AND GROUNDING CONDUCTORS.

DRAWING KEYNOTES

- 1 PROVIDE 3/4" CONDUIT TO GYM CONTROL STATION. COORDINATE LOCATION WITH HOOP OPERATOR.
- 2 PROVIDE 3/4" CONDUIT TO GYM CONTROL STATION. COORDINATE LOCATION WITH GYM DIVIDER CURTAIN.
- 3 PROVIDE 3/4" CONDUIT TO GYM CONTROL STATION. COORDINATE LOCATION WITH BLEACHER MOTOR.
- 4 PROVIDE 3/4" CONDUIT TO GYM CONTROL STATION. COORDINATE LOCATION WITH MAT LIFTER.
- 5 120 VOLT POWER FOR WATER COOLER. FIELD COORDINATE FINAL LOCATION.
- 6 120 VOLT POWER FOR LCD DISPLAY AT 96" AFF. FIELD COORDINATE FINAL LOCATION.
- 7 480 VOLT POWER FOR BOOSTER PUMP. COORDINATE LOCATION WITH MECHANICAL TRADE.
- 8 120 VOLT POWER FOR CLASSROOM AUDIO SYSTEM. COORDINATE FINAL LOCATION WITH AUDIO SYSTEM INSTALLER.
- 9 208 VOLT POWER FOR HEAT TRACE. COORDINATE FINAL LOCATION WITH MECHANICAL TRADE.
- 10 MOUNT RECEPTACLE AT 108" AFF. CENTER ABOVE WHITEBOARD/SMARTBOARD AND ACOUSTICAL PANELING.
- 11 120 VOLT POWER FOR TRAP PRIMERS. FIELD COORDINATE FINAL LOCATION.
- 12 120 VOLT POWER FOR SOUND SYSTEM. FIELD COORDINATE FINAL LOCATION.
- 13 120 VOLT POWER FOR HAND DRYER. FIELD COORDINATE FINAL LOCATION.
- 14 120 VOLT POWER FOR MOTORIZED PROJECTION SCREEN. FIELD COORDINATE FINAL LOCATION.
- 15 120 VOLT POWER FOR SCOREBOARD. LOCATE AT APPROXIMATELY 12' AFF. FIELD COORDINATE FINAL LOCATION. PROVIDE 1" CONDUIT AND WIRING TO 18" AFF FOR SCOREBOARD OPERATION/COMMUNICATIONS.
- 16 POWER FOR SITE LIGHTING. CONDUIT AND WIRING SHALL BE RUN UNDER SLAB TO SOURCE PANELBOARD.
- 17 PROVIDE JUNCTION BOX FOR WALK IN REFRIGERATOR AND COOLER LIGHTS.
- 18 480 VOLT POWER FOR SEWAGE PUMPS. FIELD COORDINATE FINAL LOCATION OF CIRCUIT AND FUSED DISCONNECTS.
- 19 LED DISPLAY CASE LIGHTING CONNECTION. COORDINATE LOCATION AND OUTLET REQUIREMENTS (HARD WIRED OR RECEPTACLE).



KEYPLAN
 NOT TO SCALE
 PLAN NORTH

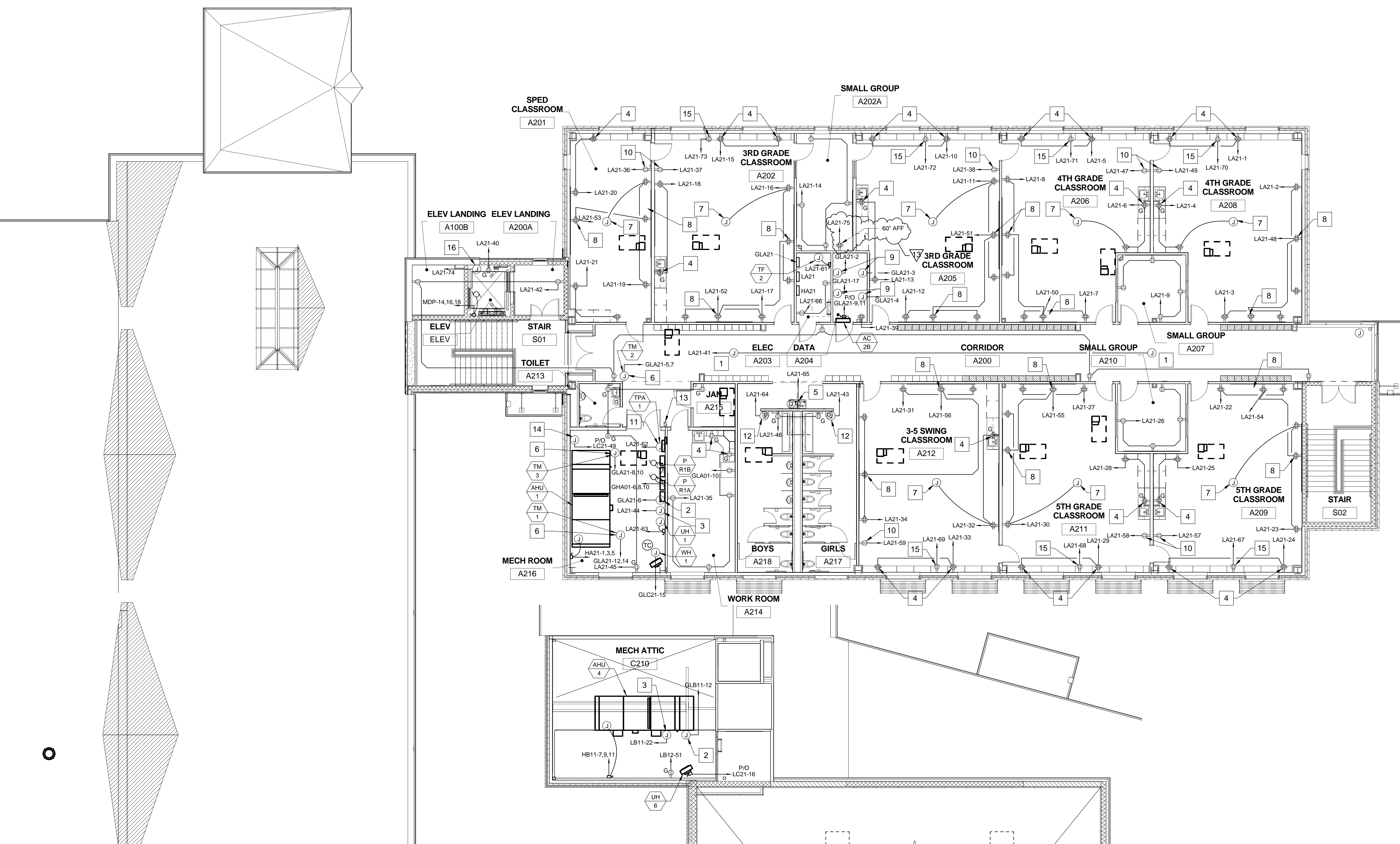


CHECK GRAPHIC SCALE BEFORE USING

STATE OF MAINE PUBLIC SCHOOL PROJECT				
TITLE: MONMOUTH ELEMENTARY / MIDDLE SCHOOL - RSU 2				
LOCATION: MONMOUTH, ME				
TITLE THIS DWG: FIRST FLOOR POWER PART PLAN WING C				
NO.	DATE	DESCRIPTION	BY	CHECK BY
10	05/21/19	RFP #30	MHL	
5	04/24/19	RFP #21	MHL	
REVISIONS				
NO.				
DATE				
READY FOR CONSTRUCTION				
DATE 07/05/18				

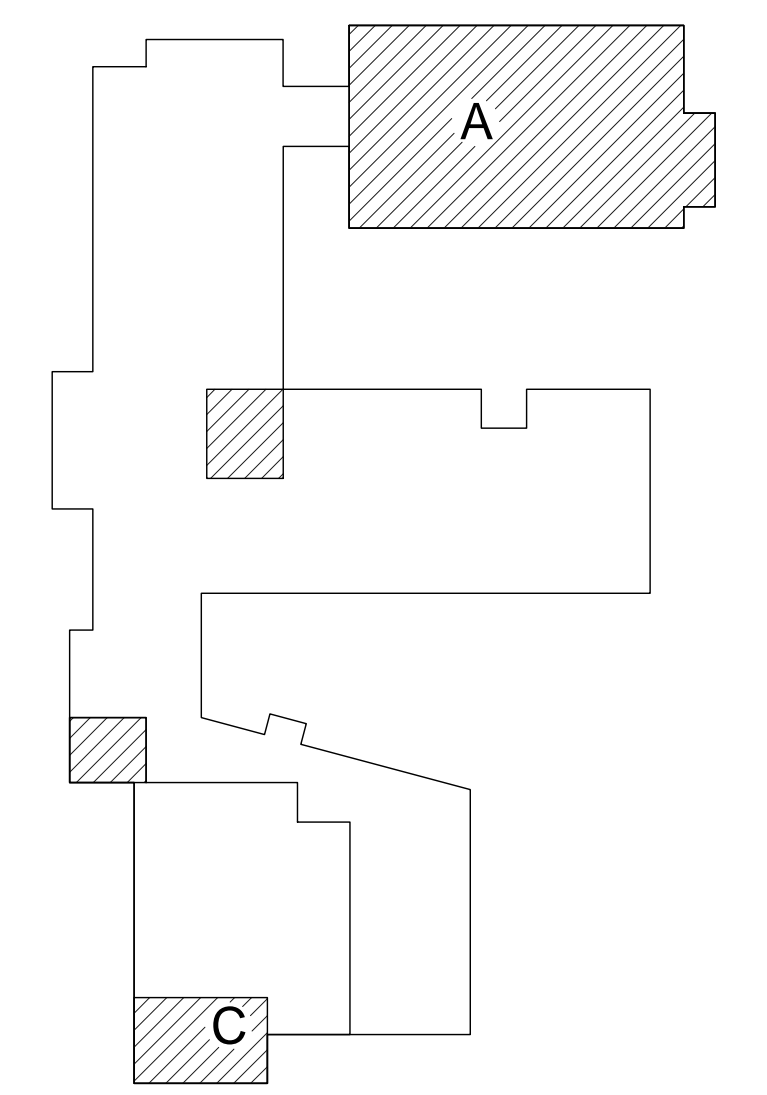
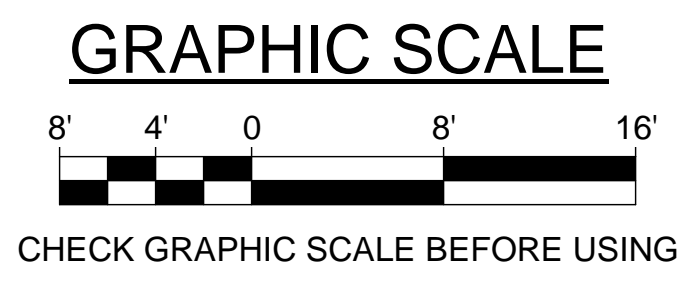
DRAWING KEYNOTES

- 1 120 VOLT POWER FOR VAV/CAV BOXES. FIELD COORDINATE FINAL LOCATIONS.
- 2 120 VOLT POWER FOR DDC. FIELD COORDINATE FINAL LOCATION.
- 3 120 VOLT POWER FOR AHU LIGHTING. FIELD COORDINATE FINAL LOCATION.
- 4 MOUNT RECEPTACLE 6" ABOVE CASEWORK/BACKSPLASH. FIELD COORDINATE FINAL LOCATION.
- 5 120 VOLT POWER FOR WATER COOLER. FIELD COORDINATE FINAL LOCATION.
- 6 208 VOLT POWER FOR HEAT TRACE. FIELD COORDINATE FINAL LOCATION WITH MECHANICAL TRADE.
- 7 120 VOLT POWER FOR CLASSROOM AUDIO SYSTEM. COORDINATE FINAL LOCATION WITH AUDIO SYSTEM INSTALLER.
- 8 MOUNT RECEPTACLE AT 108" AFF. CENTER ABOVE WHITEBOARD/SMARTBOARD AND ACOUSTICAL PANELING.
- 9 PROVIDE L5-30R TWISTLOCK TYPE RECEPTACLE. PROVIDE 2#10, + #10G, 1/2"C.
- 10 PROVIDE RECEPTACLE FOR ELECTRONIC DEVICE CHARGING CABINET. COORDINATE FINAL LOCATION WITH ARCHITECTURAL TRADE.
- 11 120 VOLT POWER FOR TRAP PRIMERS. FIELD COORDINATE FINAL LOCATION.
- 12 120 VOLT POWER FOR HAND DRYER. FIELD COORDINATE FINAL LOCATION.
- 13 EMERGENCY SHUTDOWN SWITCH FOR GAS-POWERED CENTRAL HEATING AND WATER HEATING APPLIANCES.
- 14 120 VOLT POWER FOR GAS-POWERED EQUIPMENT EMERGENCY SHUTDOWN SYSTEM. FIELD COORDINATE FINAL LOCATION.
- 15 MOUNT RECEPTACLE IN CASEWORK AT 24" AFF. COORDINATE FINAL LOCATION WITH ARCHITECTURE.
- 16 120 VOLT POWER FOR ELEVATOR CAB. FIELD COORDINATE FINAL LOCATION.
- 17 120 VOLT POWER FOR OVERHEAD DOOR. FIELD COORDINATE FINAL LOCATION.
- 18 120 VOLT POWER FOR GENERATOR BATTERY CHARGER. FIELD COORDINATE FINAL LOCATION.
- 19 120 VOLT POWER FOR JACKET WATER HEATER. FIELD COORDINATE FINAL LOCATION.
- 20 120 VOLT POWER FOR GENERATOR BATTERY HEATER. FIELD COORDINATE FINAL LOCATION.
- 21 120 VOLT POWER FOR GENERATOR CONVENIENCE RECEPTACLE.
- 22 FOR PANELBOARD LK11.



1 SECOND FLOOR POWER PART PLAN WING A
EP104 SCALE: 1/8" = 1'-0"

2 SECOND FLOOR POWER PART PLAN WING C
EP104 SCALE: 1/8" = 1'-0"

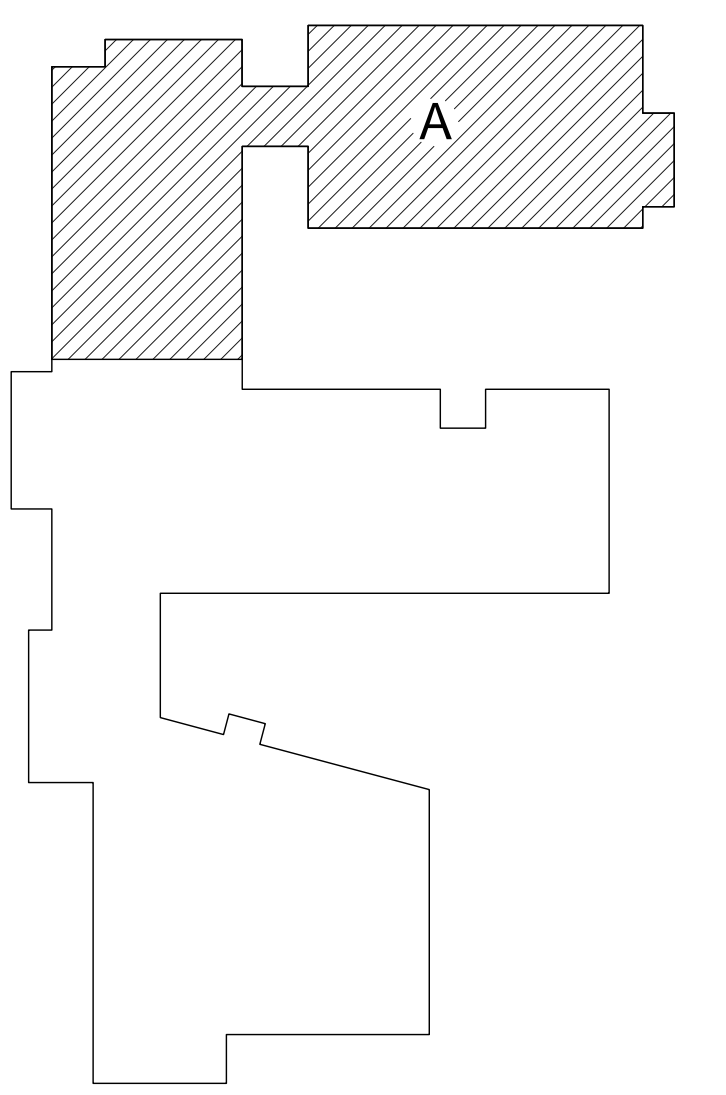
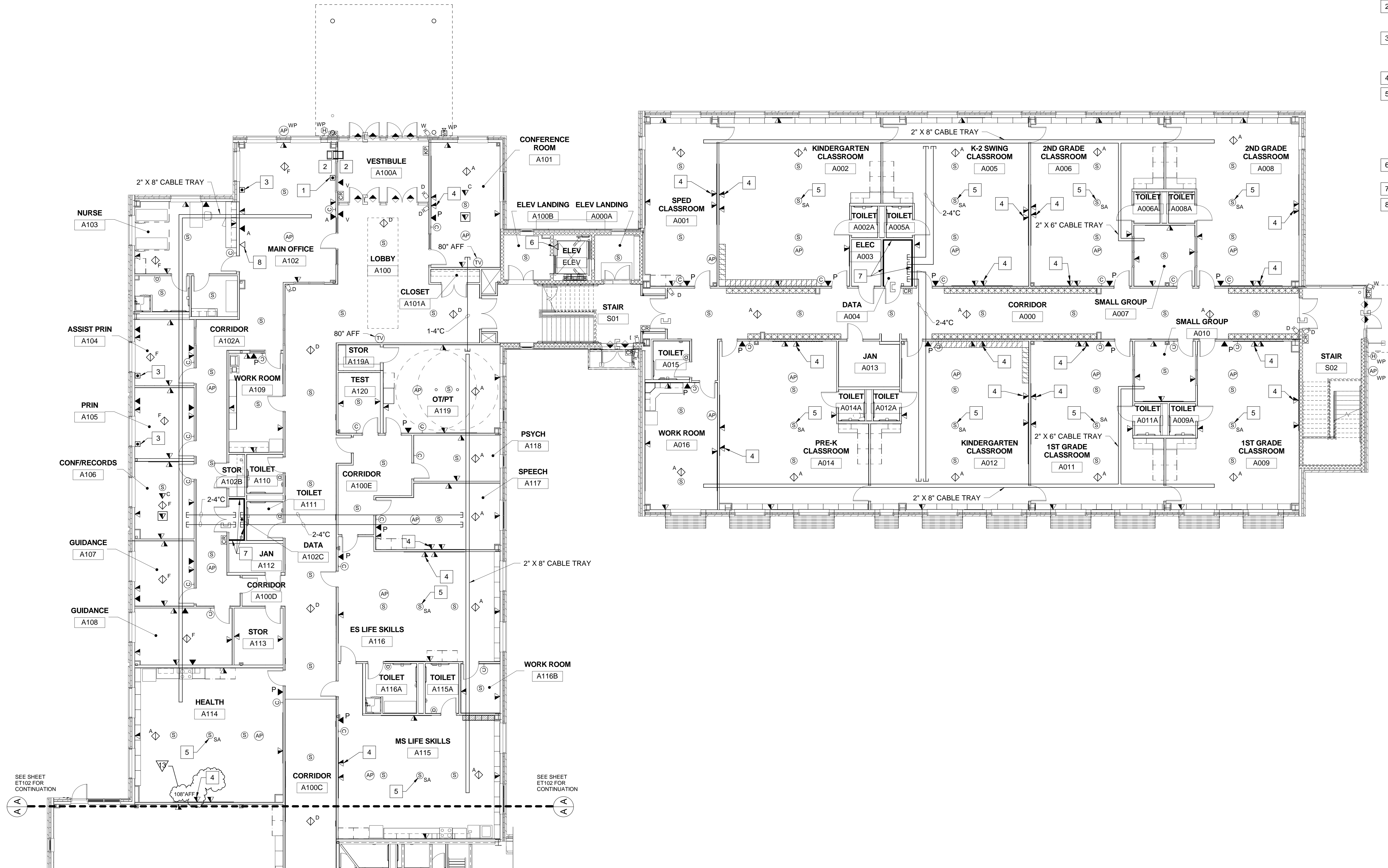


KEYPLAN
NOT TO SCALE
PLAN NORTH

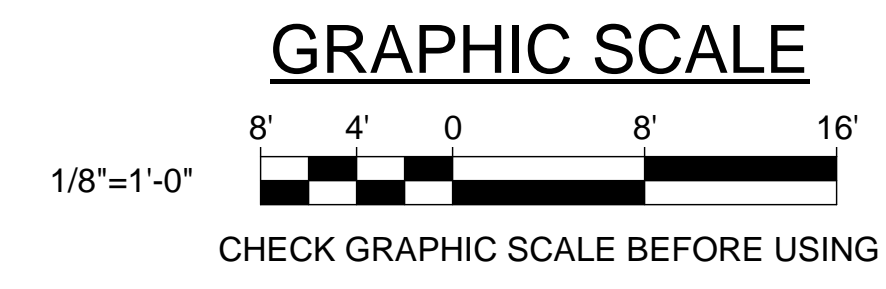
<p>STATE OF MAINE PUBLIC SCHOOL PROJECT TITLE: MONMOUTH ELEMENTARY / MIDDLE SCHOOL - RSU 2 LOCATION: MONMOUTH, ME TITLE THIS DWG: SECOND FLOOR POWER PART PLANS WINGS A, B, AND C</p>		<p>13 11/27/19 RFP #69 MHL 4 04/19/19 RFP #17 MHL NO. DATE DESCRIPTION BY</p>	<p>DRAWN BY: BPD CHECK BY: DCL</p>	<p>OAK POINT ASSOCIATES EP104 251 OF 275</p>
<p>REVISIONS</p>		<p>NO.</p>	<p>DATE</p>	<p>251 OF 275</p>
<p>READY FOR CONSTRUCTION</p>		<p>DATE</p>	<p>07/05/18</p>	<p>251 OF 275</p>

DRAWING KEYNOTES

- 1 PUSH BUTTON FOR FRONT DOOR RELEASE.
- 2 PROVIDE AN AIPHONE LEM AUDIO HANDS FREE LOCAL INTERCOM SYSTEM BETWEEN VESTIBULE AND MAIN OFFICE.
- 3 PUSH BUTTON FOR LOCKDOWN. INTERFACE WITH FIRE ALARM SYSTEM, TO RELEASE MAGNETIC DOOR HOLDERS. FIELD VERIFY LOCATION WITH OWNER AND ARCHITECT PRIOR TO ROUGH-IN.
- 4 CENTER ABOVE WHITEBOARD/SMARTBOARD.
- 5 PROVIDE LIGHTSPEED TOPCAT SOUND AMPLIFICATION SYSTEM OR EQUIVALENT. SYSTEM SHALL INCLUDE TOPCAT IN-CEILING AMPLIFIER/SPEAKER ASSEMBLY, ONE (1) FLEX MIKE, ONE (1) SHARE MIKE, ONE (1) PAGE FIRST SENSOR, AND ONE (1) MEDIA CONNECTOR. CONNECT PAGE FIRST SENSOR TO INTERCOM SPEAKERS.
- 6 PROVIDE A DEDICATED ANALOG PHONE LINE FOR ELEVATOR.
- 7 BACKBOARDS (TYP).
- 8 PROVIDE DEDICATED ANALOG PHONE LINE. COORDINATE LOCATION WITH OWNER.



1 FIRST FLOOR TECHNOLOGY PART PLAN WING A
ET101 SCALE: 1/8" = 1'-0"



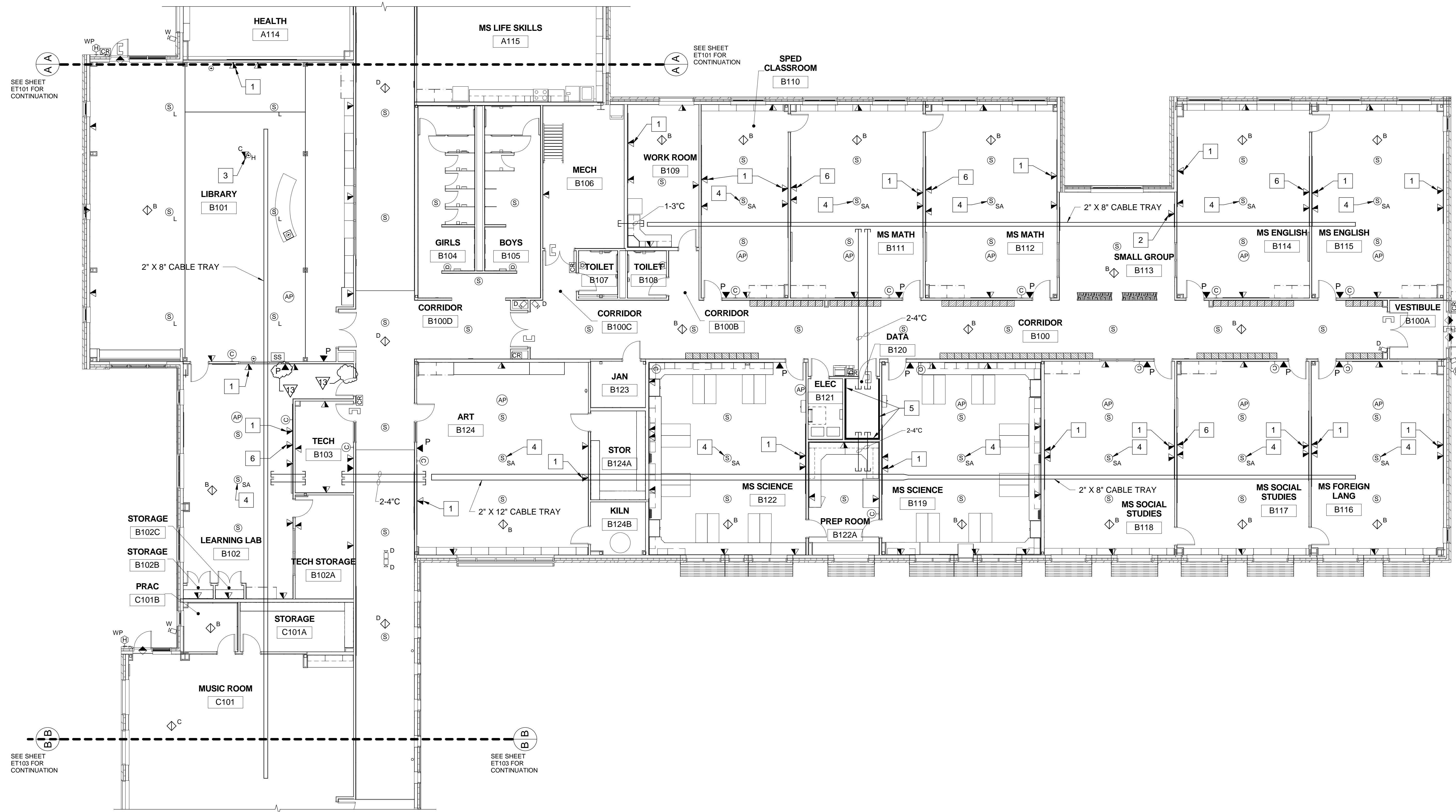
KEYPLAN
NOT TO SCALE

STATE OF MAINE
PUBLIC SCHOOL PROJECT
TITLE: MONMOUTH ELEMENTARY / MIDDLE SCHOOL - RSU 2
LOCATION: MONMOUTH, ME
TITLE THIS DWG:
FIRST FLOOR TECHNOLOGY PART PLAN
WING A

NO.	DATE	DESCRIPTION	BY
13	11/27/19	RFP #69	MHL
REVISIONS			
READY FOR CONSTRUCTION		DATE	07/05/18

DRAWN BY: BPD
CHECK BY: DCL

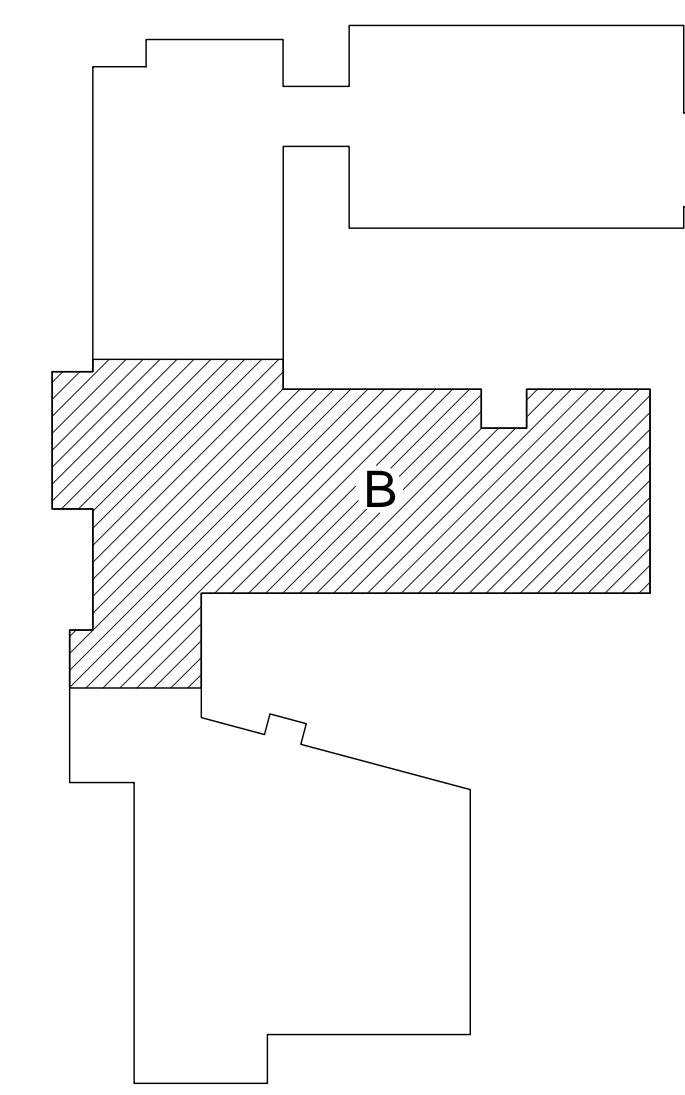
OAK POINT ASSOCIATES
ET101
264 OF 275



DRAWING KEYNOTES

- 1 CENTER ABOVE WHITEBOARD/SMARTBOARD.
- 2 FOR PRINTER.
- 3 FOR PROJECTOR.
- 4 PROVIDE LIGHTSPEED TOPCAT SOUND AMPLIFICATION SYSTEM OR EQUIVALENT. SYSTEM SHALL INCLUDE TOPCAT IN-CEILING AMPLIFIER/SPEAKER ASSEMBLY, ONE (1) FLEX MIKE, ONE (1) SHARE MIKE, ONE (1) PAGE FIRST SENSOR, AND ONE (1) MEDIA CONNECTOR. CONNECT PAGE FIRST SENSOR TO INTERCOM SPEAKERS.
- 5 BACKBOARDS (TYP).
- 6 PROVIDE DATA AT 80" AFF FOR SMART TV. FIELD COORDINATE FINAL LOCATION.

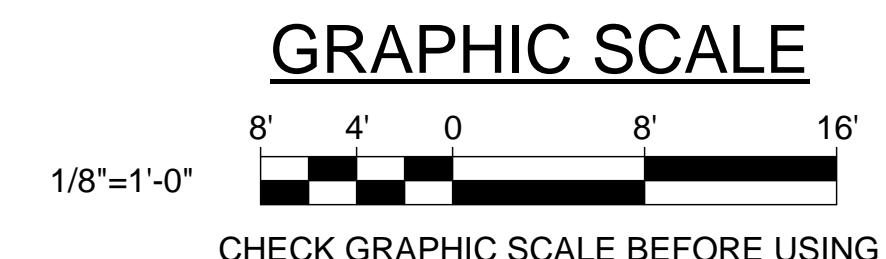
1 FIRST FLOOR TECHNOLOGY PART PLAN WING B
ET102 SCALE: 1/8" = 1'-0"



KEYPLAN
NOT TO SCALE



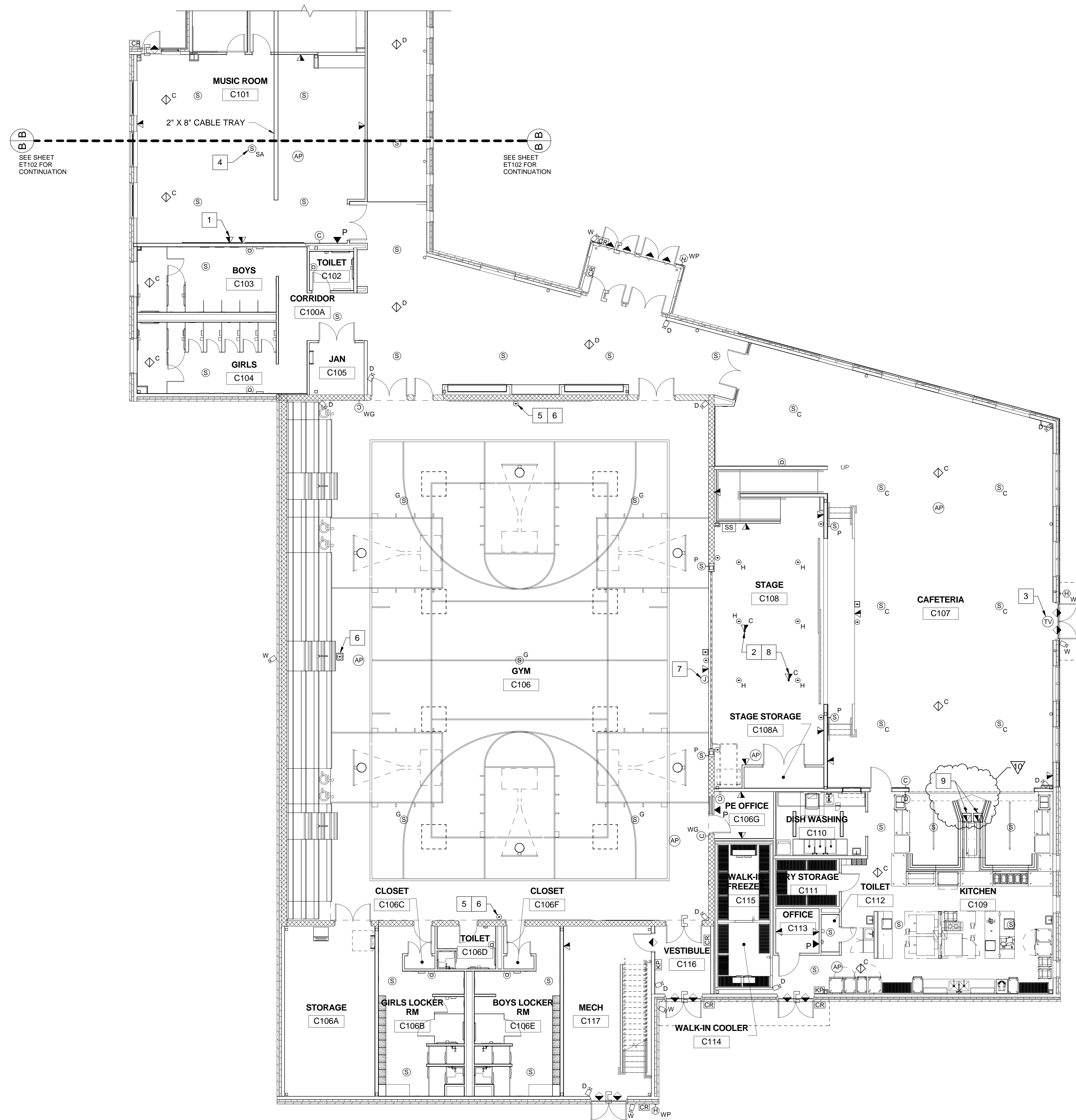
**STATE OF MAINE
PUBLIC SCHOOL PROJECT**
TITLE: MONMOUTH ELEMENTARY / MIDDLE SCHOOL - RSU 2
LOCATION: MONMOUTH, ME
TITLE THIS DWG:
FIRST FLOOR TECHNOLOGY PART PLAN
WING B



CHECK GRAPHIC SCALE BEFORE USING

NO.	DATE	DESCRIPTION	BY	CHECKED BY
13	11/27/19	RFP #69	MHL	
8	05/14/19	RFP #17R	MHL	
5	04/24/19	RFP #21	MHL	
REVISIONS				
NO.				
DATE				
READY FOR CONSTRUCTION				

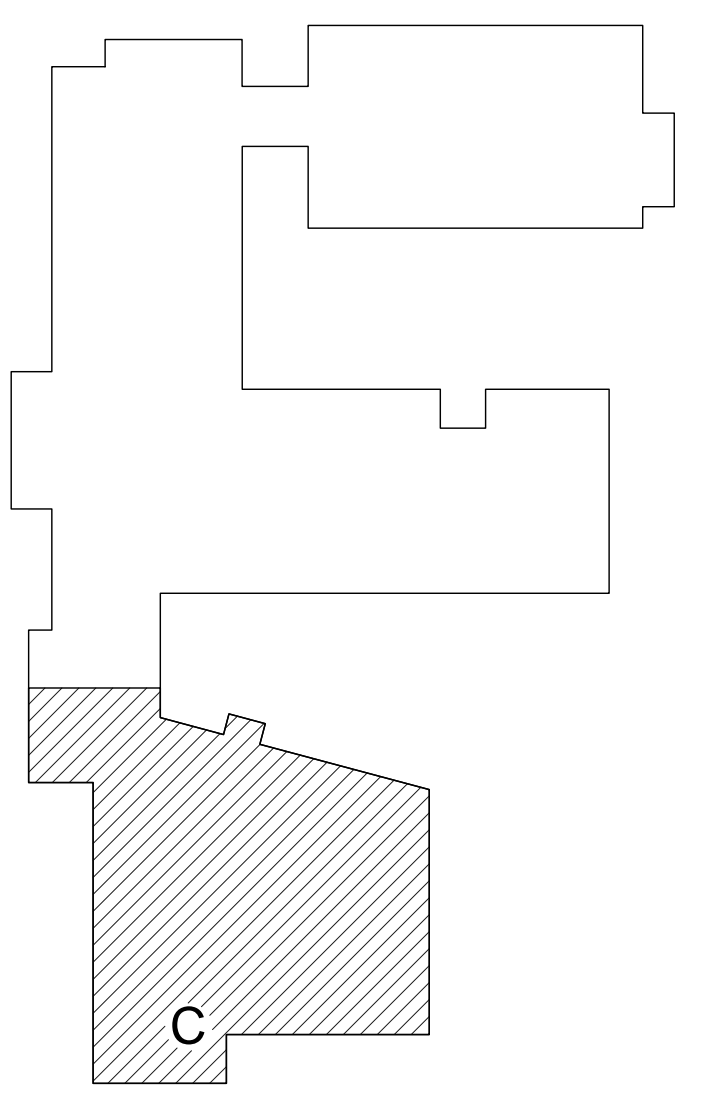
DRAWN BY: BPD
CHECK BY: DCL
OAK POINT ASSOCIATES
ET102
265 OF 275



DRAWING KEYNOTES

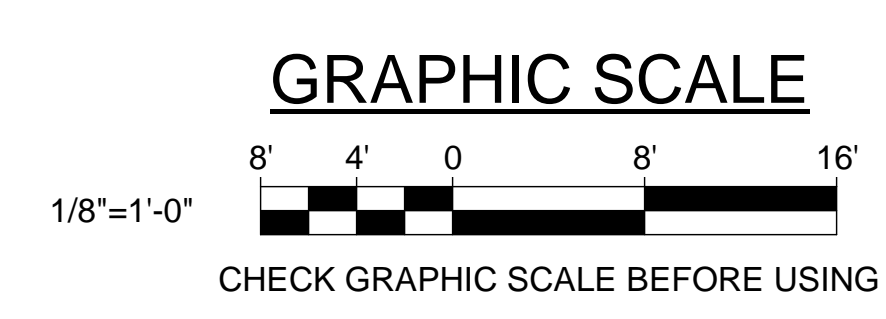
- 1 CENTER ABOVE WHITEBOARD/SMARTBOARD.
- 2 FOR PROJECTORS. COORDINATE LOCATIONS IN THE FIELD.
- 3 MOUNT ABOVE DOOR, 96" AFF.
- 4 PROVIDE LIGHTSPEED TOPCAT SOUND AMPLIFICATION SYSTEM OR EQUIVALENT. SYSTEM SHALL INCLUDE TOPCAT IN-CEILING AMPLIFIER/SPEAKER ASSEMBLY, ONE (1) FLEX MIKE, ONE (1) SHARE MIKE, ONE (1) PAGE FIRST SENSOR, AND ONE (1) MEDIA CONNECTOR. CONNECT PAGE FIRST SENSOR TO INTERCOM SPEAKERS.
- 5 OUTLET SHALL BE MOUNTED 18" AFF.
- 6 PROVIDE CABLE AND CONDUIT AND CONNECT TO SOUND SYSTEM RACK.
- 7 PROVIDE 4"x4" JUNCTION BOX 18" AFF. PROVIDE 1" CONDUIT FROM JUNCTION BOX TO SCOREBOARD FOR SCOREBOARD CONTROL WIRING.
- 8 PROVIDE 1" CONDUIT FROM DEVICE BOX TO SOUND SYSTEM RACK.
- 9 PROVIDE (1) CAT 6 JACK IN DUAL SERVICE FLOOR BOX FOR CASHIER STATION. REFER TO EP401 FOR POWER REQUIREMENTS.

1 FIRST FLOOR TECHNOLOGY PART PLAN WING C
ET103 SCALE: 1/8" = 1'-0"



KEYPLAN
NOT TO SCALE

PLAN NORTH



NO.	DATE	DESCRIPTION	BY	CHECK BY
10	05/21/19	RFP #30	MHL	
5	04/24/19	RFP #21	MHL	
REVISIONS				
READY FOR CONSTRUCTION				

STATE OF MAINE
PUBLIC SCHOOL PROJECT

TITLE: MONMOUTH ELEMENTARY / MIDDLE SCHOOL - RSU 2
LOCATION: MONMOUTH, ME

TITLE THIS DWG:
FIRST FLOOR TECHNOLOGY PART PLAN WING C

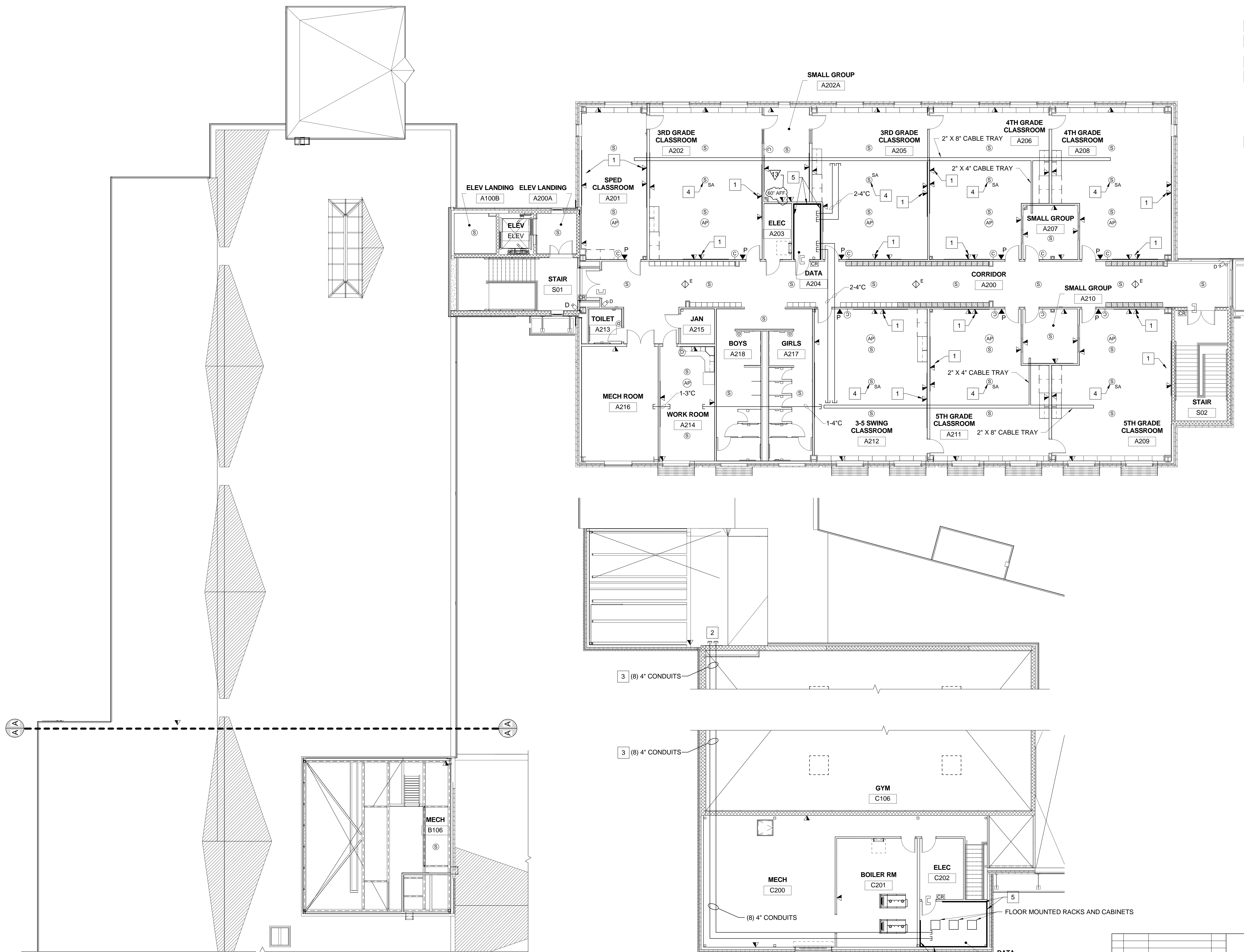
OAK POINT ASSOCIATES

DRAWING NO. ET103
SHEET NO. 266 OF 275

DATE: 07/05/18

DRAWING KEYNOTES

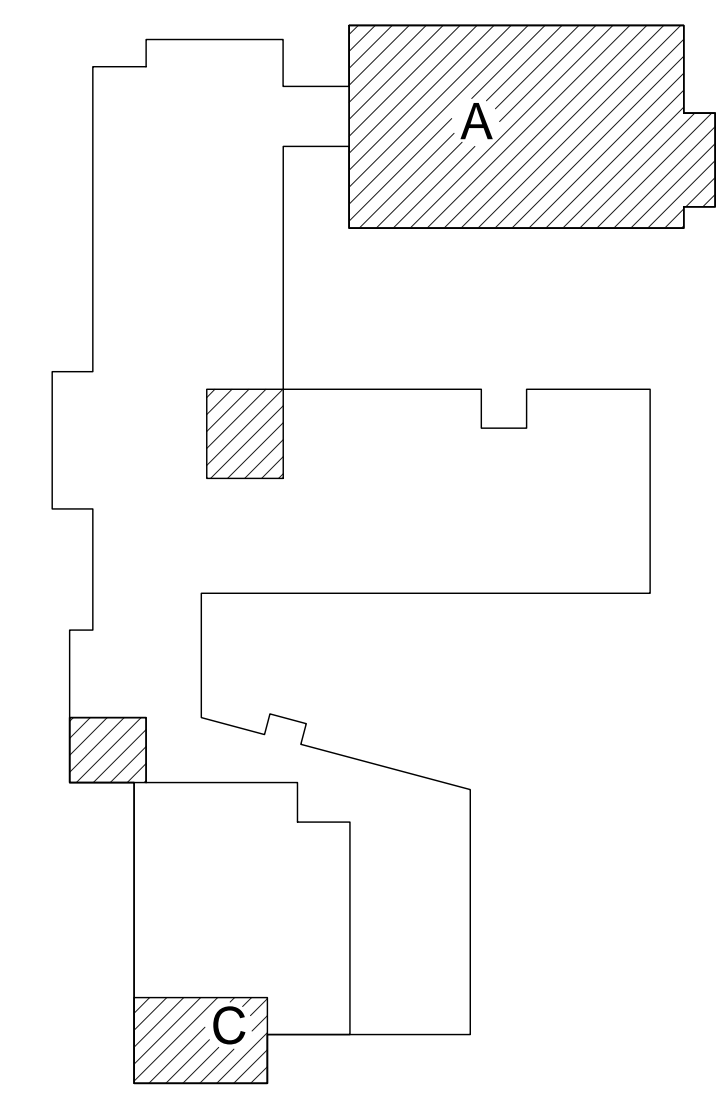
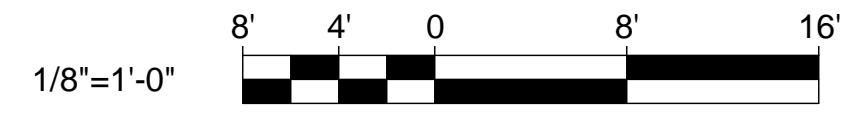
- 1 CENTER ABOVE WHITEBOARD/SMARTBOARD.
- 2 CONDUITS TO DATA ROOMS. REFER TO DETAIL 1/ET501.
- 3 RUN IN SOFFIT ABOVE BLEACHERS.
- 4 PROVIDE LIGHTSPEED TOPCAT SOUND AMPLIFICATION SYSTEM OR EQUIVALENT. SYSTEM SHALL INCLUDE TOPCAT IN-CEILING AMPLIFIER/SPEAKER ASSEMBLY, ONE (1) FLEX MIKE, ONE (1) SHARE MIKE, ONE (1) PAGE FIRST SENSOR, AND ONE (1) MEDIA CONNECTOR. CONNECT PAGE FIRST SENSOR TO INTERCOM SPEAKERS.
- 5 BACKBOARDS (TYP).



1 SECOND FLOOR TECHNOLOGY PART PLAN WING A
ET104 SCALE: 1/8" = 1'-0"

2 SECOND FLOOR TECHNOLOGY PART PLAN WING C
ET104 SCALE: 1/8" = 1'-0"

GRAPHIC SCALE



KEYPLAN
NOT TO SCALE



STATE OF MAINE
PUBLIC SCHOOL PROJECT
TITLE: MONMOUTH ELEMENTARY / MIDDLE SCHOOL - RSU 2
LOCATION: MONMOUTH, ME

TITLE THIS DWG:
SECOND FLOOR TECHNOLOGY PART
PLANS WINGS A, B, AND C

NO.	DATE	DESCRIPTION	BY
13	11/27/19	RFP #69	MHL
14			
15			
16			
17			
18			
19			
20			

DRAWN BY: BPD
CHECK BY: DCL
DATE: 07/05/18

OAK POINT
ASSOCIATES
DRAWING NO. ET104
SHEET NO. 267 OF 275