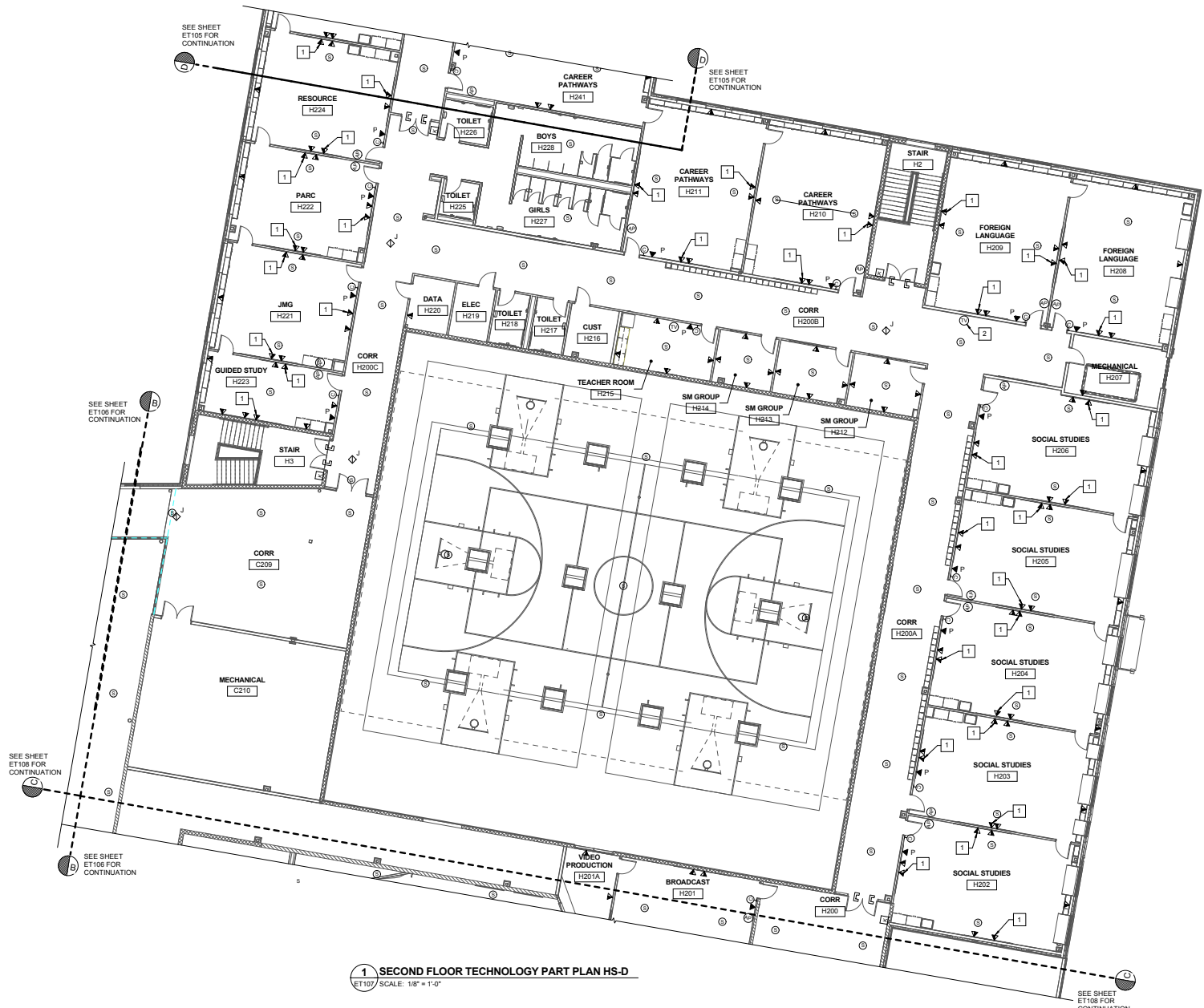


DRAWING NOTES

1. PROVIDE SPEAKERS IN CORRIDORS, OFFICES, BATHROOMS, CONFERENCE ROOMS AND CLASSROOMS, MAXIMUM 20' SPACING.
2. MOUNT ACCESS POINTS (AP) TO CEILING. LOCATE ACCESS POINTS FOR OPTIMUM COVERAGE.

DRAWING KEYNOTES

- 1 LOCATE CENTERED ABOVE WHITEBOARD.
- 2 84" AFF.



SEE SHEET ET108 FOR CONTINUATION

SEE SHEET ET105 FOR CONTINUATION

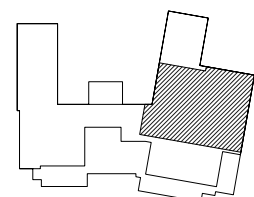
SEE SHEET ET106 FOR CONTINUATION

SEE SHEET ET108 FOR CONTINUATION

SEE SHEET ET106 FOR CONTINUATION

SEE SHEET ET108 FOR CONTINUATION

1 SECOND FLOOR TECHNOLOGY PART PLAN HS-D
ET107 SCALE: 1/8" = 1'-0"



KEYPLAN
NOT TO SCALE

PLAN
NORTH

GRAPHIC SCALE



CHECK GRAPHIC SCALE BEFORE USING

NO.		DATE	DESCRIPTION	BY	CHECK BY
REVISIONS					
ISSUE FOR CONSTRUCTION		DATE	09/06/17		

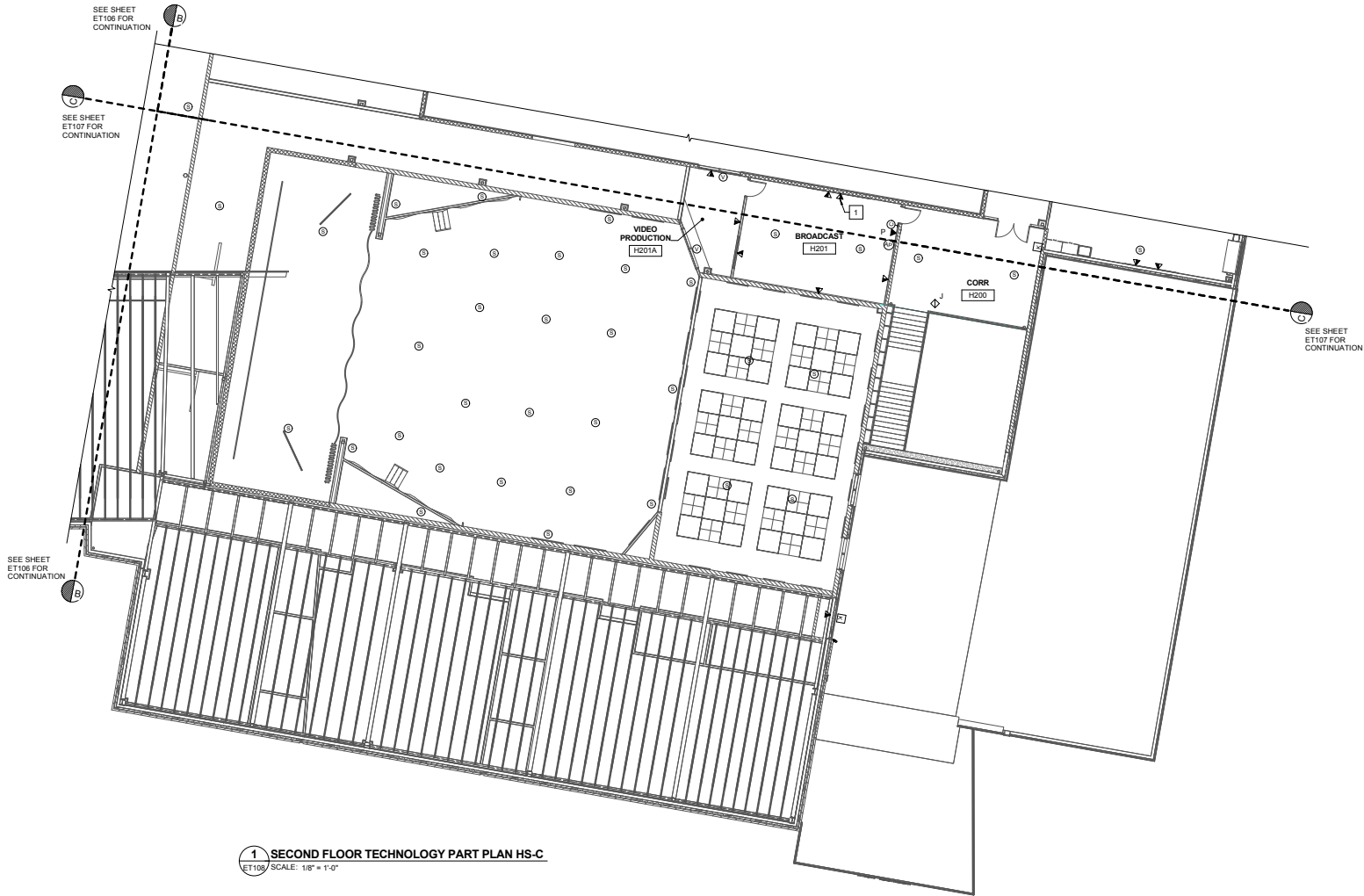
	STATE OF MAINE PUBLIC SCHOOL PROJECT NOKSIS MIDDLE HIGH SCHOOL - RSU 19 NEWPORT, MAINE SECOND FLOOR TECHNOLOGY PART PLAN HS-D
DRAWN BY: BPD CHECK BY: DCL	OAK POINT ARCHITECTS ET107

DRAWING NOTES

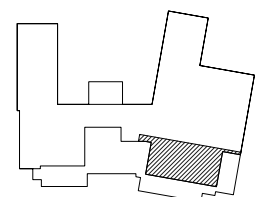
1. PROVIDE SPEAKERS IN CORRIDORS AND CLASSROOMS, MAXIMUM 20' SPACING.
2. MOUNT ACCESS POINTS (AP) TO CEILING. LOCATE ACCESS POINT FOR OPTIMUM COVERAGE.

DRAWING KEYNOTES

1. LOCATE CENTERED ABOVE WHITEBOARD.

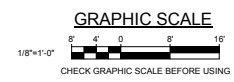


1 SECOND FLOOR TECHNOLOGY PART PLAN HS-C
 ET108 SCALE: 1/8" = 1'-0"



KEYPLAN
 NOT TO SCALE

PLAN
 NORTH



NO.		DATE	DESCRIPTION	BY	CHECK BY
REVISIONS					
ISSUE FOR CONSTRUCTION		DATE	09/06/17		

	STATE OF MAINE PUBLIC SCHOOL PROJECT PROJECT NO. NOKOMIS MIDDLE/HIGH SCHOOL - RSU 19 LOCATION NEWPORT, MAINE DRAWN BY: SPD CHECK BY: DCL NO. 11/17 SECOND FLOOR TECHNOLOGY PART PLAN HS-C OAK POINT ARCHITECTS ET108
--	---