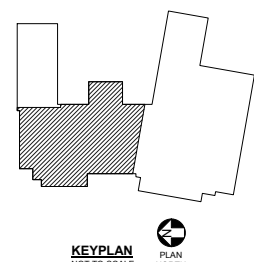
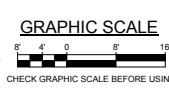


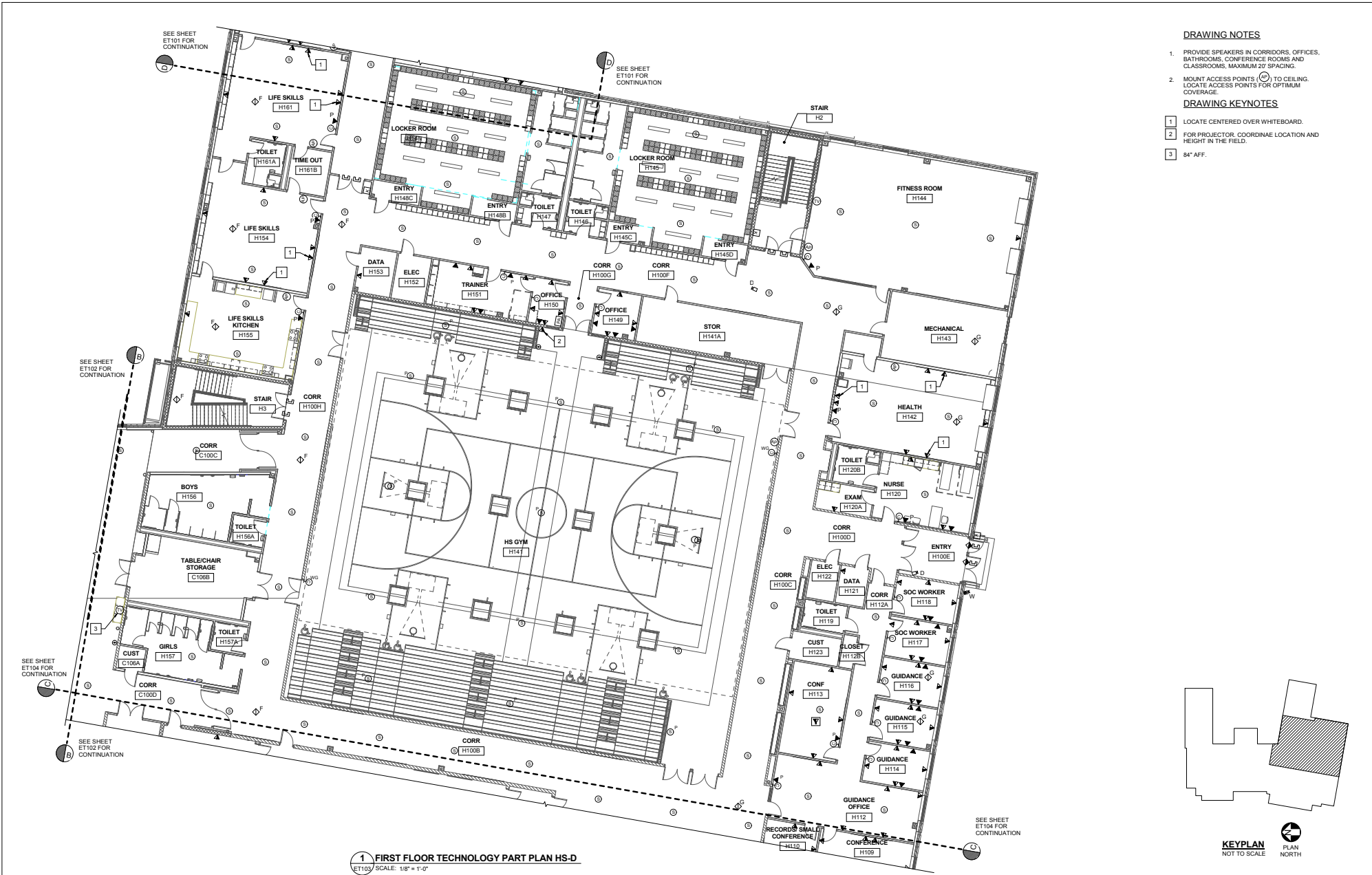
- DRAWING NOTES**
1. PROVIDE SPEAKERS IN CORRIDORS, OFFICES, BATHROOMS, CONFERENCE ROOMS AND CLASSROOMS, MAXIMUM 20' SPACING.
 2. MOUNT ACCESS POINTS (AP) TO CEILING. LOCATE ACCESS POINT FOR OPTIMUM COVERAGE.
- DRAWING KEYNOTES**
1. LOCATE CENTERED ABOVE WHITEBOARD.
 2. FOR PROJECTOR, COORDINATE LOCATION AND HEIGHT IN THE FIELD.
 3. 84" AFF.
 4. MANUAL LOCK DOWN PUSHBUTTON. INTERFACE WITH FIRE ALARM SYSTEM TO RELEASE MAGNETIC DOOR HOLDERS. FIELD VERIFY LOCATION WITH OWNER AND ARCHITECT PRIOR TO ROUGH-IN.
 5. FRONT DOOR RELEASE.
 6. PROVIDE ALPHEM LEM AUDIO HANDS FREE INTERCOM SYSTEM (OR EQUIVALENT) TO COMMUNICATE BETWEEN VESTIBULE AND OFFICE.

1 FIRST FLOOR TECHNOLOGY PART PLAN MS-B
 ET102 SCALE: 1/8" = 1'-0"

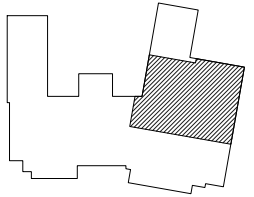


STATE OF MAINE PUBLIC SCHOOL PROJECT			
NORWICH MIDDLE/HIGH SCHOOL - RESU 19			
NEWPORT, MAINE			
FIRST FLOOR TECHNOLOGY PART PLAN			
MS-B			
OAK POINT ARCHITECTS ET102			
ISSUE FOR CONSTRUCTION			
NO.	DATE	DESCRIPTION	BY
REVISIONS			
NO.	DATE	DESCRIPTION	BY
1	09/06/17		DCL

THIS PLAN IS THE PROPERTY OF OAK POINT ARCHITECTS. IT IS TO BE USED ONLY FOR THE PROJECT AND SITE SPECIFICALLY IDENTIFIED. IT IS NOT TO BE REPRODUCED, COPIED, OR TRANSMITTED IN ANY FORM OR BY ANY MEANS, ELECTRONIC OR MECHANICAL, INCLUDING PHOTOCOPYING, RECORDING, OR BY ANY INFORMATION STORAGE AND RETRIEVAL SYSTEM, WITHOUT THE WRITTEN PERMISSION OF OAK POINT ARCHITECTS.



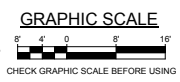
- DRAWING NOTES**
- PROVIDE SPEAKERS IN CORRIDORS, OFFICES, BATHROOMS, CONFERENCE ROOMS AND CLASSROOMS, MAXIMUM 20' SPACING.
 - MOUNT ACCESS POINTS (AP) TO CEILING. LOCATE ACCESS POINTS FOR OPTIMUM COVERAGE.
- DRAWING KEYNOTES**
- LOCATE CENTERED OVER WHITEBOARD.
 - FOR PROJECTOR, COORDINATE LOCATION AND HEIGHT IN THE FIELD.
 - 84° AFF.



KEYPLAN
NOT TO SCALE

PLAN NORTH

1 FIRST FLOOR TECHNOLOGY PART PLAN HS-D
ET103 SCALE: 1/8" = 1'-0"



STATE OF MAINE PUBLIC SCHOOL PROJECT		DATE: 09/06/17	
NORRIS MIDDLE/HIGH SCHOOL - RSU 19 NEWPORT, MAINE		DRAWN BY: BPD	
FIRST FLOOR TECHNOLOGY PART PLAN HS-D		CHECK BY: DJL	
OAK POINT ARCHITECTS		NO. DATE DESCRIPTION BY	
ET103		REVISIONS	
ISSUE FOR CONSTRUCTION		DATE: 09/06/17	

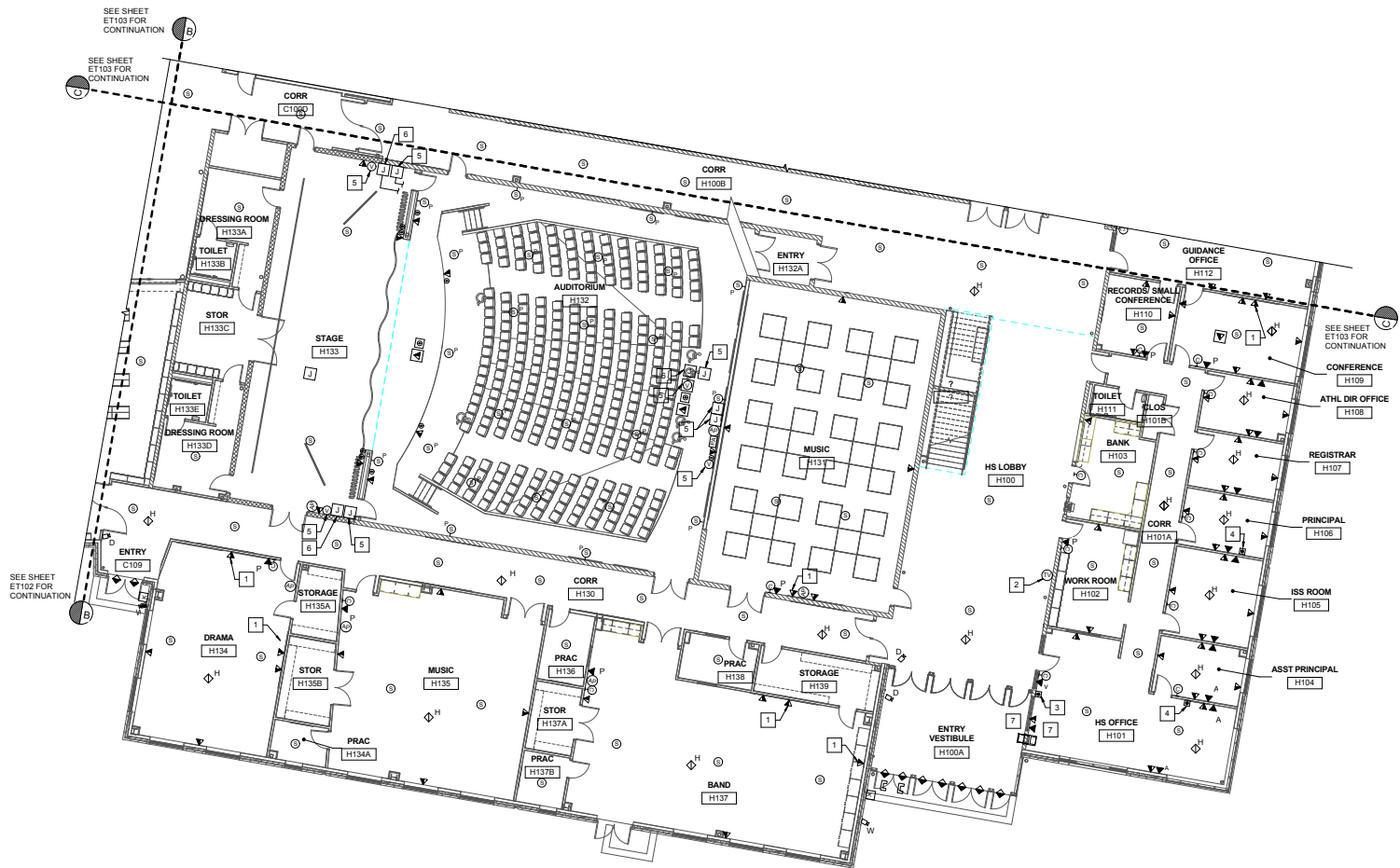
DATE PLOTTED: 09/06/17 10:00 AM
 2017 RELEASE UNDER THE PUBLIC ACCESS TO INFORMATION ACT (PTIA) 2017/09/06 10:00 AM

DRAWING NOTES

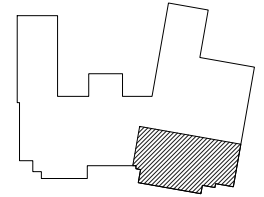
1. PROVIDE SPEAKERS IN CORRIDORS AND CLASSROOMS, MAXIMUM 20' SPACING.
2. MOUNT ACCESS POINTS (AP) TO CEILING. LOCATE ACCESS POINTS FOR OPTIMUM COVERAGE.

DRAWING KEYNOTES

- 1 LOCATE CENTERED OVER WHITEBOARD.
- 2 84" AFF.
- 3 PUSH BUTTON FOR FRONT DOOR RELEASE.
- 4 PUSH BUTTON FOR LOCKDOWN, INTERFACE WITH FIRE ALARM SYSTEM TO RELEASE MAGNETIC DOOR HOLDERS. FIELD VERIFY LOCATION WITH OWNER AND ARCHITECT PRIOR TO ROUGH-IN.
- 5 PROVIDE 4"x4" BOX AND 1" C TO VIDEO PRODUCTION ROOM H201A.
- 6 PROVIDE 4"x4" BOX AND 1" C TO PA RACK AT BACK OF AUDITORIUM.
- 7 PROVIDE AN AIPHONE LEM AUDIO HANDS FREE INTERCOM SYSTEM (OR EQUIVALENT) BETWEEN VESTIBULE H100A AND HS OFFICE H101.



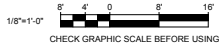
1 FIRST FLOOR TECHNOLOGY PART PLAN HS-C
ET104 SCALE: 1/8" = 1'-0"



KEYPLAN
NOT TO SCALE

PLAN
NORTH

GRAPHIC SCALE



CHECK GRAPHIC SCALE BEFORE USING

STATE OF MAINE PUBLIC SCHOOL PROJECT			
NOKOMIS MIDDLE/HIGH SCHOOL - RSU 10		NEWPORT, MAINE	
FIRST FLOOR TECHNOLOGY PART PLAN		HS-C	
DRAWN BY: BPD CHECK BY: DCL DATE: 09/06/17		PROJECT NO: ET104 SHEET NO: 510 of 532	
ISSUE FOR CONSTRUCTION			

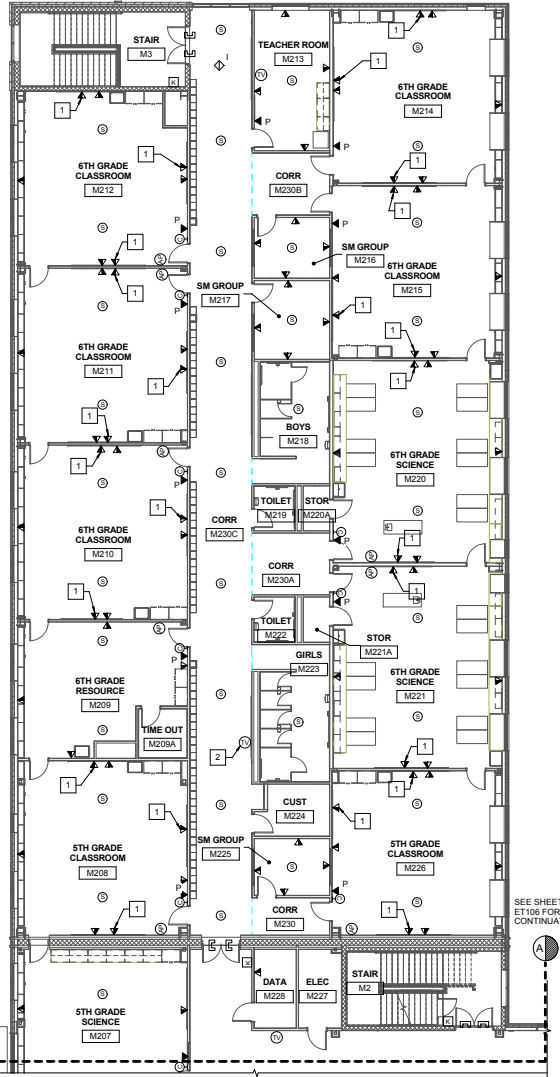
THIS SET OF DRAWINGS IS THE PROPERTY OF PROFESSIONAL ELECTRICAL SERVICES, INC. (PES). IT IS TO BE USED ONLY FOR THE PROJECT AND SITE SPECIFICALLY IDENTIFIED HEREIN. IT IS NOT TO BE REPRODUCED, COPIED, OR TRANSMITTED IN ANY FORM OR BY ANY MEANS, WITHOUT THE WRITTEN PERMISSION OF PES.

DRAWING NOTES

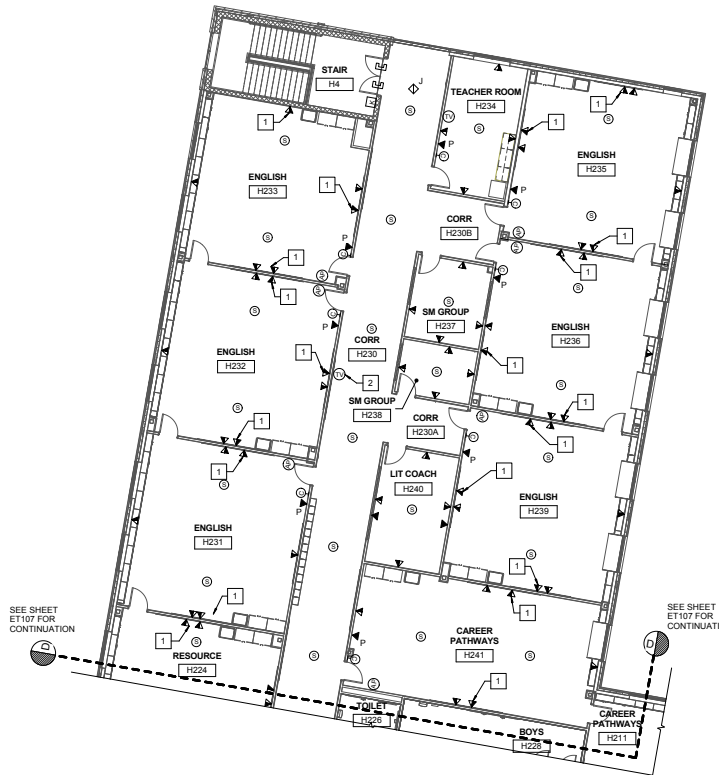
1. PROVIDE SPEAKERS IN CORRIDORS AND CLASSROOMS, MAXIMUM 20' SPACING.
2. MOUNT ACCESS POINTS (AP) TO CEILING. LOCATE ACCESS POINTS FOR OPTIMUM COVERAGE.

DRAWING KEYNOTES

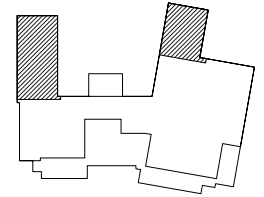
- 1 LOCATE CENTERED ABOVE WHITEBOARD.
- 2 84" AFF.



1 SECOND FLOOR TECHNOLOGY PART PLAN MS-A
ET105 SCALE: 1/8" = 1'-0"



2 SECOND FLOOR TECHNOLOGY PART PLAN HS-E
ET105 SCALE: 1/8" = 1'-0"



KEYPLAN
NOT TO SCALE

PLAN
NORTH

SEE SHEET ET106 FOR CONTINUATION

SEE SHEET ET106 FOR CONTINUATION

SEE SHEET ET107 FOR CONTINUATION

SEE SHEET ET107 FOR CONTINUATION

GRAPHIC SCALE



CHECK GRAPHIC SCALE BEFORE USING

NO.		DATE	DESCRIPTION	BY	CHECK BY
REVISIONS					
ISSUE FOR CONSTRUCTION		DATE	09/06/17		

STATE OF MAINE
PUBLIC SCHOOL PROJECT

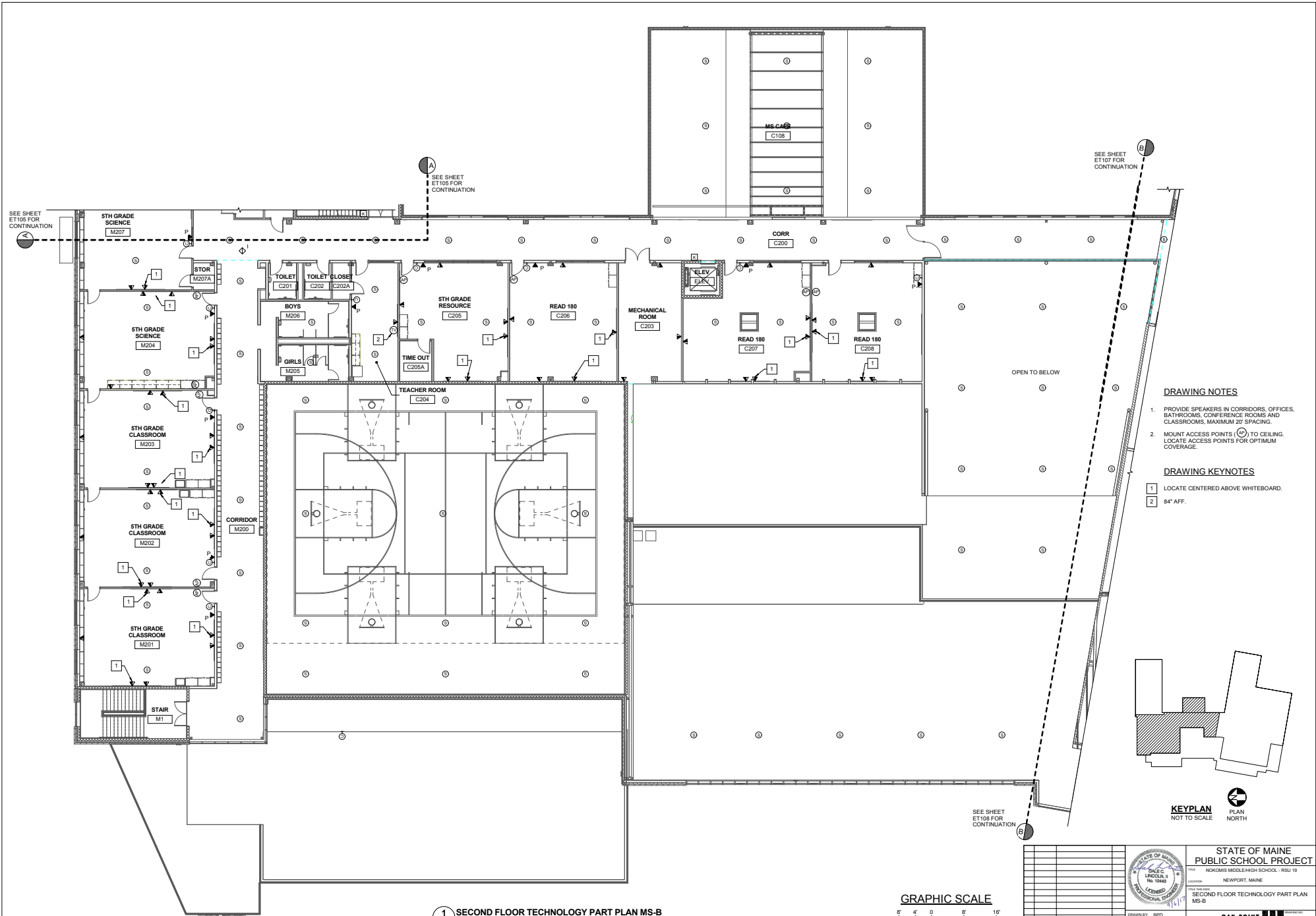
NORRIS MIDDLE/HIGH SCHOOL - RSU 10
NEWPORT, MAINE

SECOND FLOOR TECHNOLOGY PART
PLANS MS-A & HS-E

OAK POINT
ARCHITECTS

DESIGNED BY: BPD
DRAWN BY: BPD
CHECK BY: DCL

NO. 511 of 532



DRAWING NOTES

1. PROVIDE SPEAKERS IN CORRIDORS, OFFICES, BATHROOMS, CONFERENCE ROOMS AND CLASSROOMS, MAXIMUM 20' SPACING.
2. MOUNT ACCESS POINTS (A) TO CEILING. LOCATE ACCESS POINTS FOR OPTIMUM COVERAGE.

DRAWING KEYNOTES

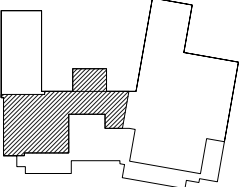
- 1 LOCATE CENTERED ABOVE WHITEBOARD.
- 2 84" AFF.

1 SECOND FLOOR TECHNOLOGY PART PLAN MS-B
ET106 SCALE: 1/8" = 1'-0"

GRAPHIC SCALE



CHECK GRAPHIC SCALE BEFORE USING



KEYPLAN
NOT TO SCALE



NO.		DATE	DESCRIPTION	BY	CHECK BY
REVISIONS					
ISSUE FOR CONSTRUCTION		DATE	09/06/17		

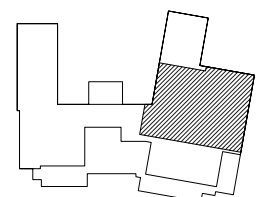
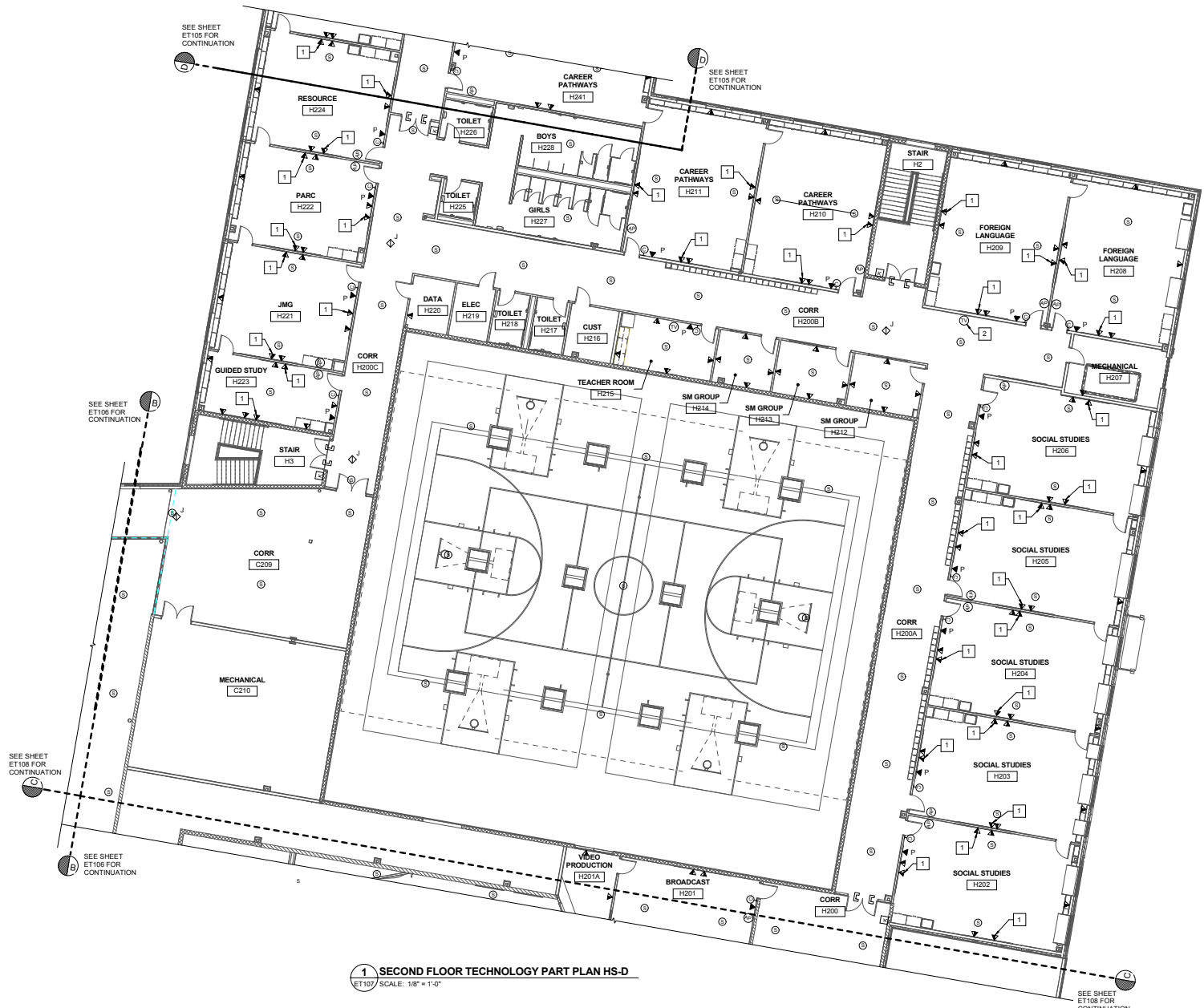
	STATE OF MAINE PUBLIC SCHOOL PROJECT NOKOMIS MIDDLE/HIGH SCHOOL - RSU 19 NEWPORT, MAINE SECOND FLOOR TECHNOLOGY PART PLAN MS-B
DRAWN BY: BPD CHECK BY: DCL DATE: 11/17	OAK POINT ARCHITECTS ET106 512 of 532

DRAWING NOTES

1. PROVIDE SPEAKERS IN CORRIDORS, OFFICES, BATHROOMS, CONFERENCE ROOMS AND CLASSROOMS, MAXIMUM 20' SPACING.
2. MOUNT ACCESS POINTS (⊙) TO CEILING. LOCATE ACCESS POINTS FOR OPTIMUM COVERAGE.

DRAWING KEYNOTES

- 1 LOCATE CENTERED ABOVE WHITEBOARD.
- 2 84" AFF.



KEYPLAN
NOT TO SCALE

PLAN
NORTH

1 SECOND FLOOR TECHNOLOGY PART PLAN HS-D
ET107 SCALE: 1/8" = 1'-0"

GRAPHIC SCALE



CHECK GRAPHIC SCALE BEFORE USING

STATE OF MAINE PUBLIC SCHOOL PROJECT			DRAWN BY: BPD CHECK BY: DCL
NISKOMIS MIDDLE HIGH SCHOOL - RSU 10 NEWPORT, MAINE			NO. DATE DESCRIPTION BY REVISIONS
SECOND FLOOR TECHNOLOGY PART PLAN HS-D		OAK POINT ARCHITECTS	DATE: 09/06/17
ISSUE FOR CONSTRUCTION		513 of 532	

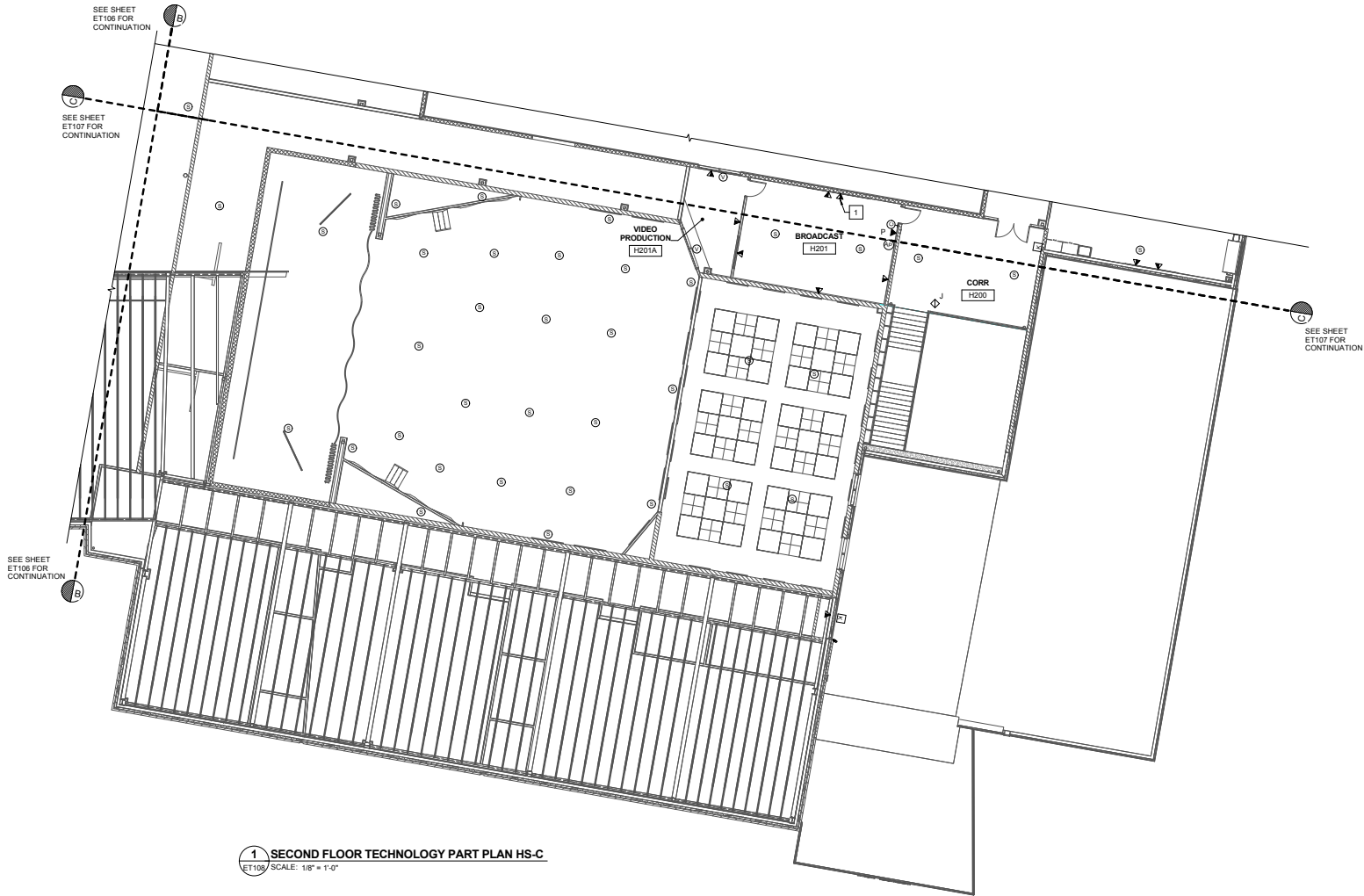
DATE PLOTTED: 09/06/17 10:58 AM
 PROJECT: NISKOMIS MIDDLE HIGH SCHOOL - RSU 10
 SHEET: SECOND FLOOR TECHNOLOGY PART PLAN HS-D
 DRAWN BY: BPD
 CHECK BY: DCL
 DATE: 09/06/17

DRAWING NOTES

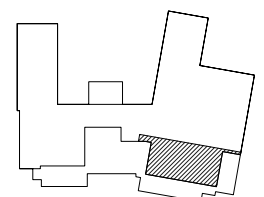
1. PROVIDE SPEAKERS IN CORRIDORS AND CLASSROOMS, MAXIMUM 20' SPACING.
2. MOUNT ACCESS POINTS (AP) TO CEILING. LOCATE ACCESS POINT FOR OPTIMUM COVERAGE.

DRAWING KEYNOTES

1. LOCATE CENTERED ABOVE WHITEBOARD.

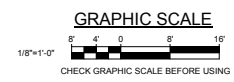


1 SECOND FLOOR TECHNOLOGY PART PLAN HS-C
 ET108 SCALE: 1/8" = 1'-0"



KEYPLAN
 NOT TO SCALE

PLAN
 NORTH



NO.		DATE	DESCRIPTION	BY	CHECK BY
REVISIONS					
ISSUE FOR CONSTRUCTION		DATE	09/06/17		

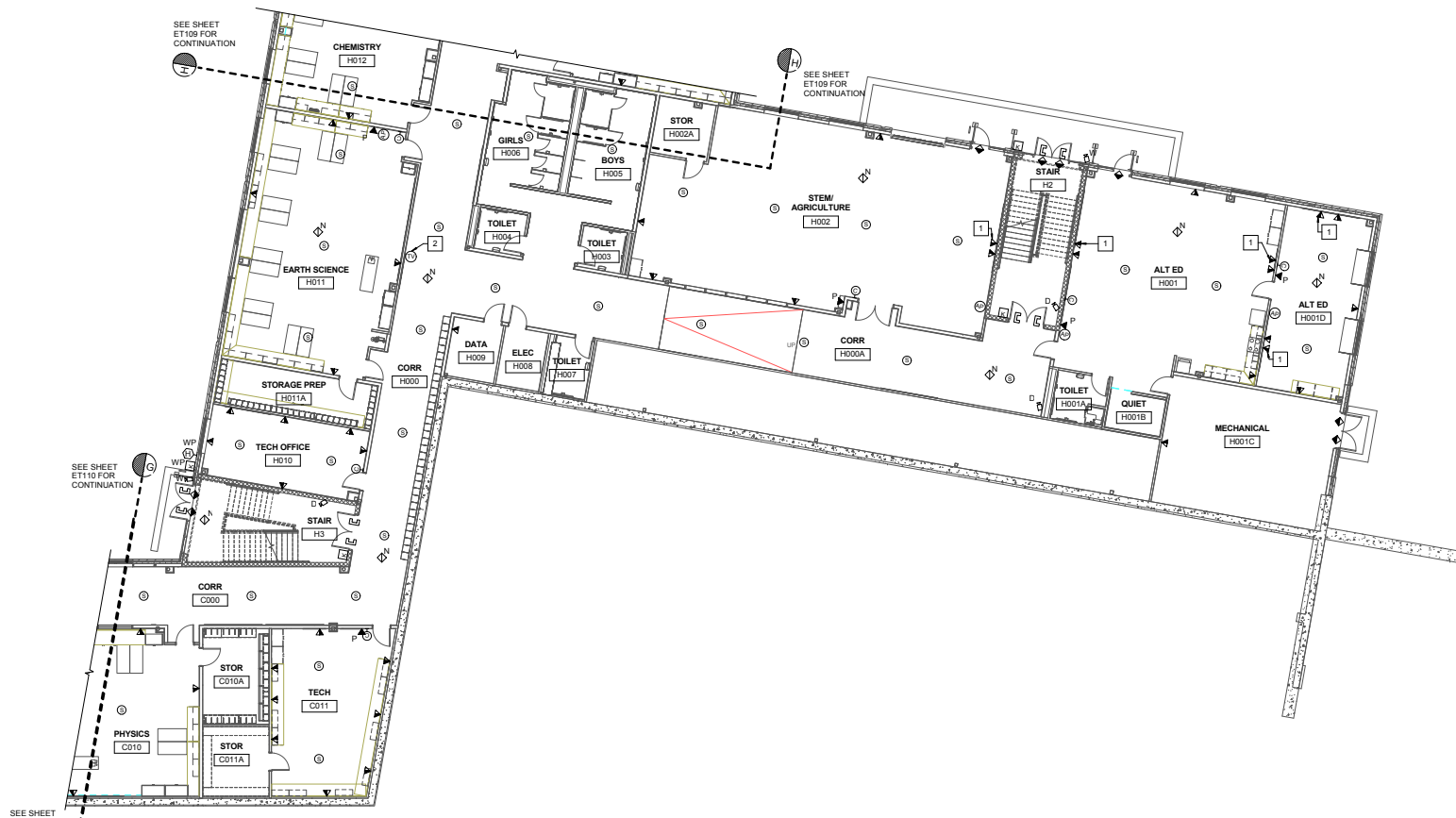
	STATE OF MAINE PUBLIC SCHOOL PROJECT PROJECT NO. NOKOMIS MIDDLE/HIGH SCHOOL - RSU 19 LOCATION NEWPORT, MAINE DRAWN BY: SPD CHECK BY: DCL NO. 11/17 SECOND FLOOR TECHNOLOGY PART PLAN HS-C OAK POINT ARCHITECTS ET108
--	---

DRAWING NOTES

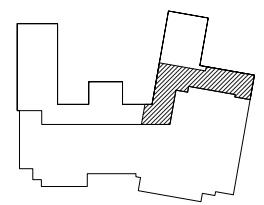
1. PROVIDE SPEAKERS IN CORRIDORS, OFFICES, BATHROOMS, CONFERENCE ROOMS AND CLASSROOMS, MAXIMUM 20' SPACING.
MOUNT ACCESS POINTS (AP) TO CEILING. LOCATE ACCESS POINTS FOR OPTIMUM COVERAGE.

DRAWING KEYNOTES

- 1 LOCATE CENTERED ABOVE WHITEBOARD.
- 2 84" AFF.



1 LOWER LEVEL TECHNOLOGY PART PLAN HS-D
 (ET111) SCALE: 1/8" = 1'-0"



KEYPLAN
 NOT TO SCALE

PLAN
 NORTH

GRAPHIC SCALE



		STATE OF MAINE PUBLIC SCHOOL PROJECT	
		NOKOMIS MIDDLE/HIGH SCHOOL - RSU 10 NEWPORT, MAINE	
LOWER LEVEL TECHNOLOGY PART PLAN HS-D		OAK POINT ARCHITECTS ET111	
DRAWN BY: BPD CHECK BY: DCL		DATE: 09/06/17	
NO. DATE DESCRIPTION BY CHECK BY		REVISIONS	
ISSUE FOR CONSTRUCTION		DATE: 09/06/17	

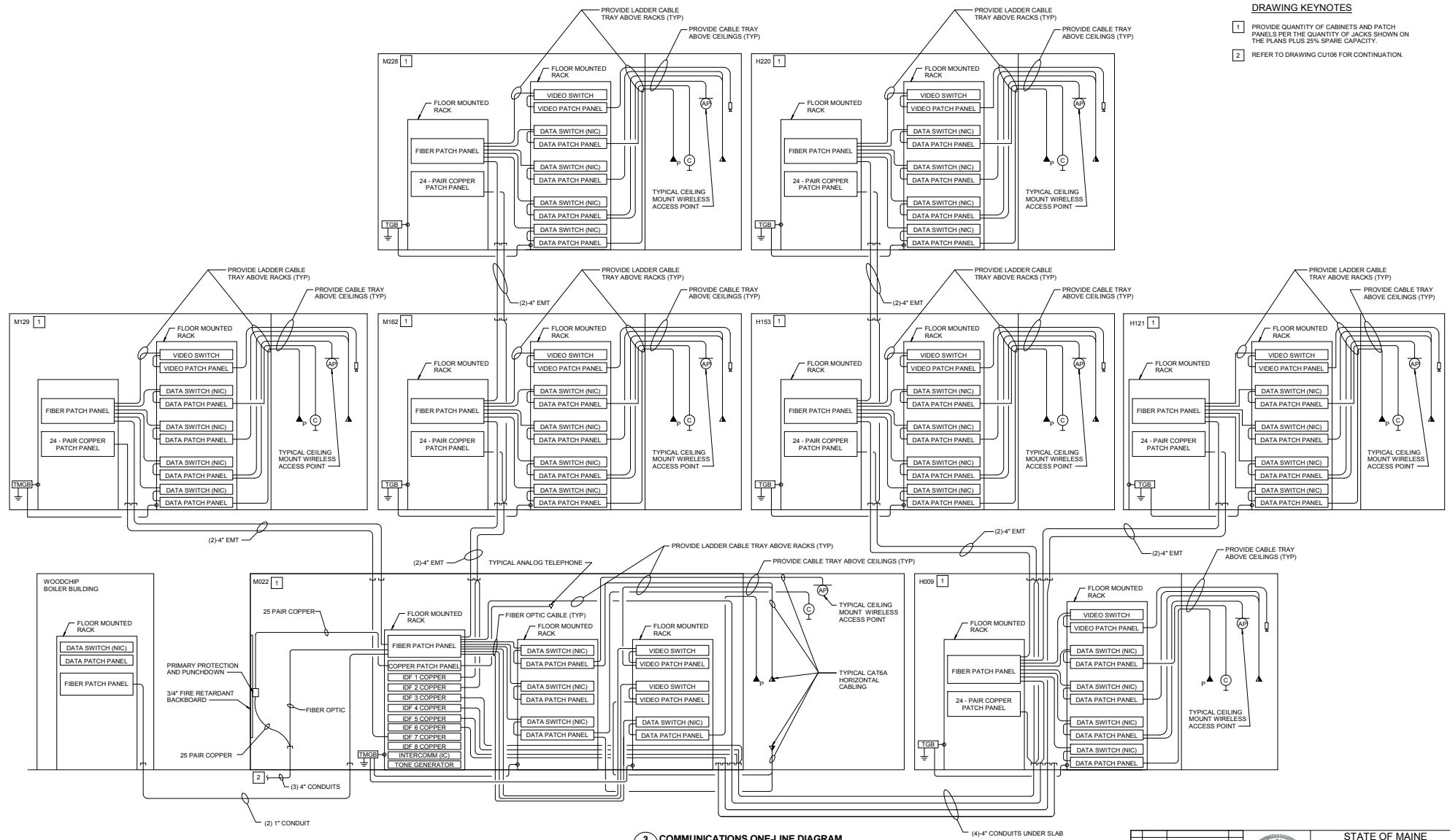
© 2017 OAK POINT ARCHITECTS
 ALL RIGHTS RESERVED. NO PART OF THIS DRAWING MAY BE REPRODUCED, ELECTRONICALLY OR MECHANICALLY, WITHOUT PERMISSION.

DRAWING NOTES

1. PROVIDE 2" X 24" CABLE TRAYS ABOVE CORRIDOR CEILINGS. PROVIDE CONDUIT FROM TELECOMMUNICATIONS OUTLETS TO CABLE TRAYS. REFER TO DETAIL 4ET502.
2. DATA SWITCHES SHOWN IN RACKS ARE NOT IN CONTRACT (NIC).

DRAWING KEYNOTES

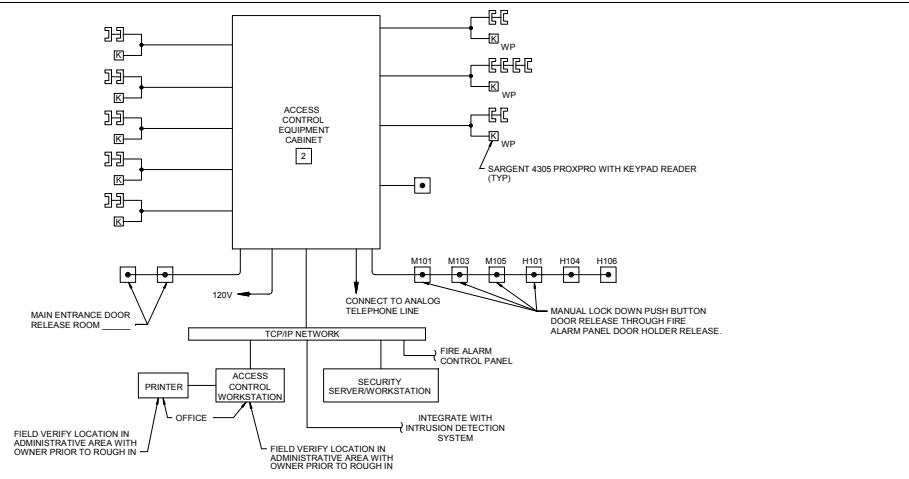
- 1 PROVIDE QUANTITY OF CABINETS AND PATCH PANELS PER THE QUANTITY OF JACKS SHOWN ON THE PLANS PLUS 25% SPARE CAPACITY.
- 2 REFER TO DRAWING CU106 FOR CONTINUATION.



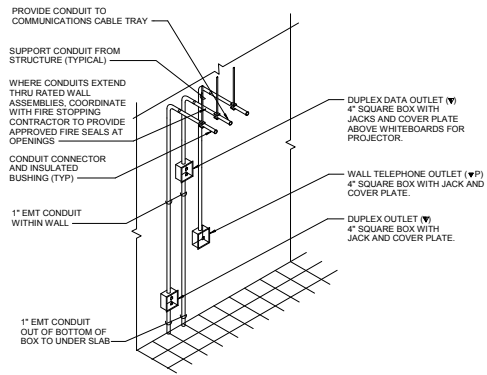
3 COMMUNICATIONS ONE-LINE DIAGRAM
 ET501 SCALE: NOT TO SCALE

STATE OF MAINE PUBLIC SCHOOL PROJECT			STATE OF MAINE DEPT. OF EDUCATION 1000 WATER STREET PORTLAND, ME 04102
NOKOMIS MIDDLE/HIGH SCHOOL - RSU 10 NEWPORT, MAINE			PROJECT NO. 11117 TECHNOLOGY DETAILS
DRAWN BY: BFD CHECK BY: DJL DATE: 09/06/17	REVISIONS NO. DATE DESCRIPTION BY CHECK BY		ET501 518 of 532

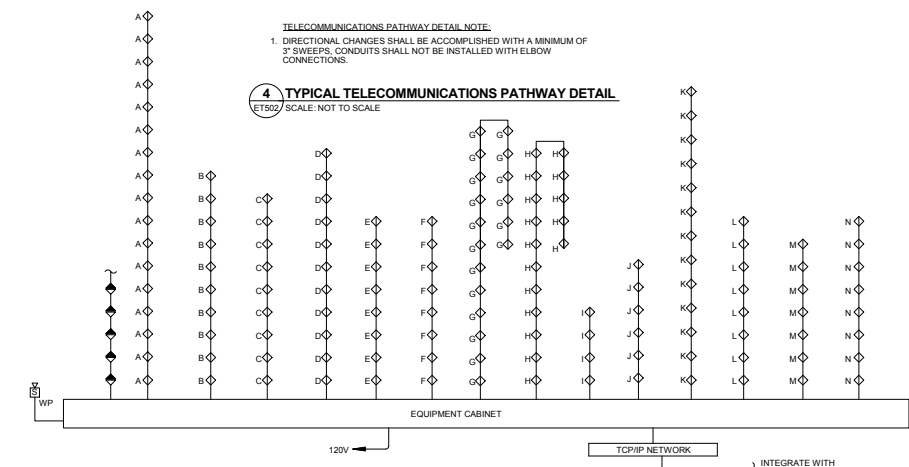
DATE PLOTTED: 09/06/17 10:58 AM
 PLOTTER: HP DesignJet 2445



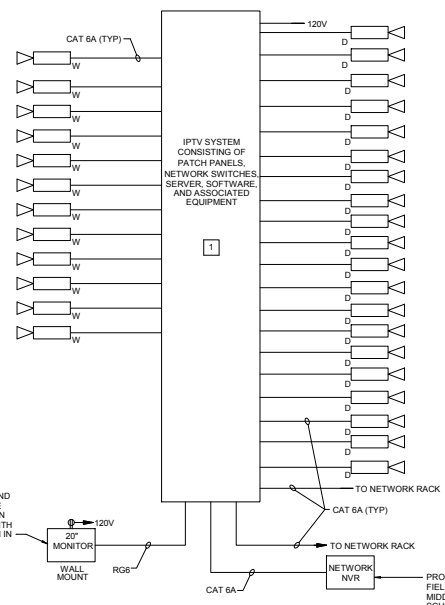
1 ACCESS CONTROL SYSTEM
ET502 SCALE: NOT TO SCALE



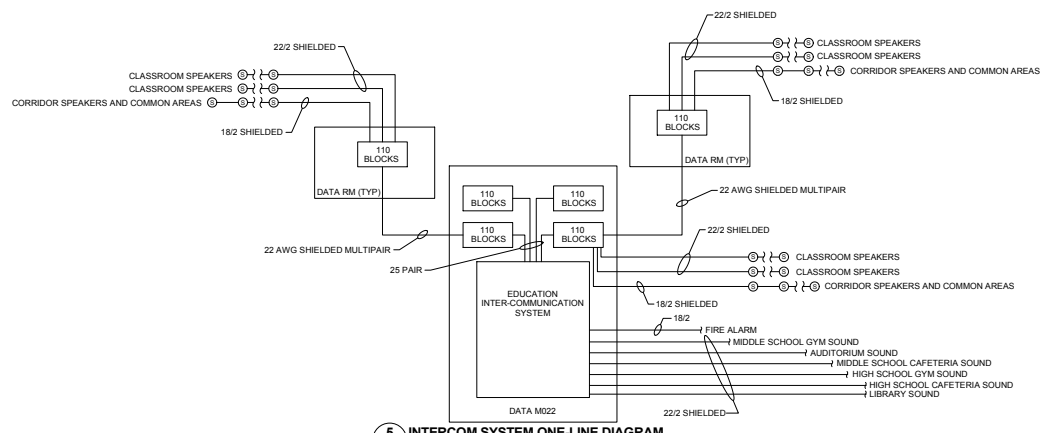
4 TYPICAL TELECOMMUNICATIONS PATHWAY DETAIL
ET502 SCALE: NOT TO SCALE



3 INTRUSION DETECTION
ET502 SCALE: NOT TO SCALE



2 IP CAMERA SYSTEM (VIDEO SURVEILLANCE)
ET502 SCALE: NOT TO SCALE



5 INTERCOM SYSTEM ONE-LINE DIAGRAM
ET502 SCALE: NOT TO SCALE

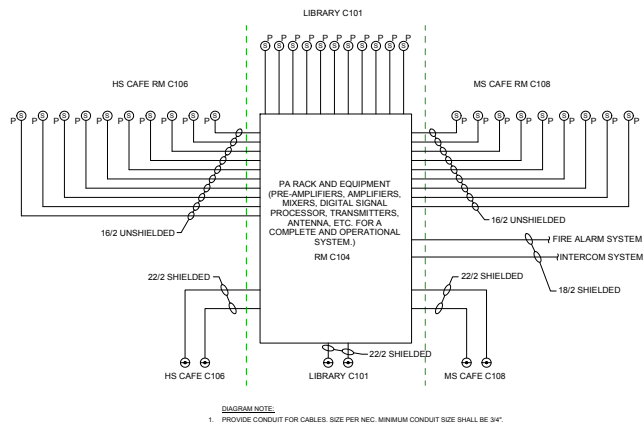
DRAWING NOTES

1. THESE DRAWINGS ARE A GENERAL SYSTEM OVERVIEW INTENDED TO CONVEY DESIGN INTENT. SUBSEQUENTLY, NOT ALL HARDWARE IS SHOWN IN THE DIAGRAM. THE INSTALLED SYSTEM SHALL ADHERE TO PROPOSED MANUFACTURER'S SYSTEM REQUIREMENTS AND SPECIFICATIONS.
2. REFER TO POWER PLANS FOR LOCATIONS OF POWER ASSIST DOOR OPERATORS AND 120V LOCK POWER.
3. UNDER SLAB CONDUITS SHALL BE ROUTED IN A MANNER TO ENSURE THE LEAST NUMBER OF CONDUIT BENDS POSSIBLE.

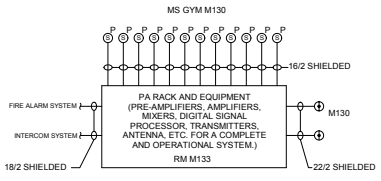
DRAWING KEYNOTES

1. INTEGRATE VIDEO SURVEILLANCE SYSTEM WITH ACCESS CONTROL SYSTEM.
2. PROVIDE QUANTITY OF KEYPADS/CARD READERS AND ELECTRIC LOCKS/DOOR STRIKES AS SHOWN ON THE PLANS.

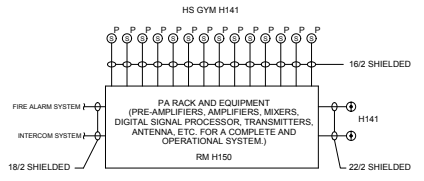
STATE OF MAINE PUBLIC SCHOOL PROJECT			
NORRIS MIDDLE/HIGH SCHOOL - RSU 19 NEWPORT, MAINE			
TECHNOLOGY DETAILS			
NO.	DATE	DESCRIPTION	CHECK BY
REVISIONS		BY	NO.
ISSUE FOR CONSTRUCTION		DATE	09/06/17
DRAWN BY: BPD		CHECKED BY: DCL	
DATE: 09/06/17		PROJECT NO: 17-001	



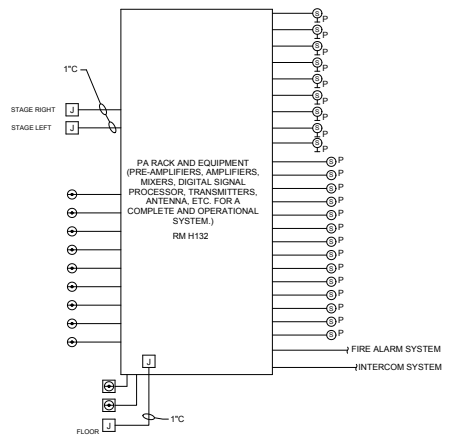
1 CAFETERIAS AND LIBRARY PA SYSTEMS ONE-LINE DIAGRAM
ET503 SCALE: NOT TO SCALE



2 MS GYM PA SYSTEM ONE-LINE DIAGRAM
ET503 SCALE: NOT TO SCALE



3 HS GYM PA SYSTEM ONE-LINE DIAGRAM
ET503 SCALE: NOT TO SCALE



4 AUDITORIUM PA SYSTEM ONE-LINE DIAGRAM
ET503 SCALE: NOT TO SCALE

						STATE OF MAINE PUBLIC SCHOOL PROJECT	
				PROJECT NO. NSKRMIS MIDDLE/HIGH SCHOOL - RSU 19 LOCATION NEWPORT, MAINE		PROJECT TITLE TECHNOLOGY DETAILS	
				DRAWN BY: EPD CHECK BY: DCL		PROJECT NO. ET503	
				NO. DATE DESCRIPTION BY CHECK BY REVISIONS NO.		ISSUE FOR CONSTRUCTION DATE 09/06/17	
				2017 Main Street, Westbrook, Maine 04092		520 of 532	