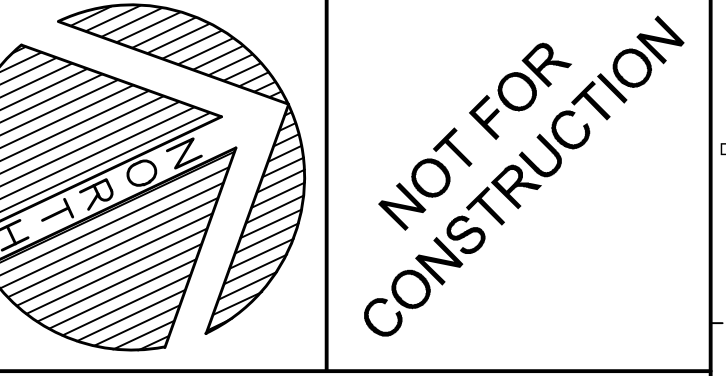


N11 INSET PLAN
SCALE: 1"=30'

- REMOVALS NOTES:**
1. CLEARING LIMITS SHALL EXTEND ONLY TO SUCH A POINT NECESSARY TO COMPLETE EARTHWORK ACTIVITIES.
 2. THE UTILITY INFORMATION SHOWN ON THIS PLAN IS APPROXIMATE AND IS BASED ON A SURVEY COMPLETED BY SHYKA, SHEPPARD & GARSTER LAND SURVEYORS (13-106, APRIL 25, 2013) & GIS INFORMATION PROVIDED BY THE GREATER AUGUSTA UTILITY DISTRICT. THE SITE CONTRACTOR SHALL FIELD VERIFY ALL EXISTING UTILITIES PRIOR TO BEGINNING ANY SITE CLEARING, GRUBBING AND EARTHWORK ACTIVITIES.
 3. ALL SOIL AND EROSION CONTROL MEASURES SHALL BE IN PLACE PRIOR TO THE COMMENCEMENT OF ANY WORK. SEE CD101 FOR MORE INFORMATION. THE SITE CONTRACTOR IS RESPONSIBLE FOR INSPECTING AND MAINTAINING ALL SOIL AND EROSION CONTROL MEASURES.
 4. SOME TREE TRIMMING NOT SHOWN ON THIS PLAN MAY BE NECESSARY FOR CONSTRUCTION PURPOSES. THE SITE CONTRACTOR SHOULD EVALUATE AND SCHEDULE ACCORDINGLY.

EXISTING		LEGEND		PROPOSED	
	TREE REMOVALS		LIMITS OF WETLAND		UTILITY POLE
	STREET LIGHTING		BUILDING LIGHTING		WATER SHUTOFF / GATE VALVE
	TRANSFORMER PAD		DUMPSTER		MANHOLE
	SEWER MANHOLE		CATCH BASIN		FIRE HYDRANT
	SIGN		PAVEMENT REMOVALS		LIMITS OF CONSTRUCTION
	PROPERTY SETBACK		PROPERTY LINE		ABUTTING PROPERTY LINE
	TREE LINE				

REV.	DESCRIPTION	DATE
1	PROGRESS PRINT	01.14.19
0	FIRST DRAFT	12.07.18



WBRC
ARCHITECTS • ENGINEERS
WWW.WBRC.COM
BANGOR, MAINE 207-941-4511
PORTLAND, MAINE 207-836-4511
JANUARY, FLORIDA 904-297-9811

BGS 66 INDUSTRIAL

PROJECT: 66 INDUSTRIAL DRIVE, AUGUSTA, ME

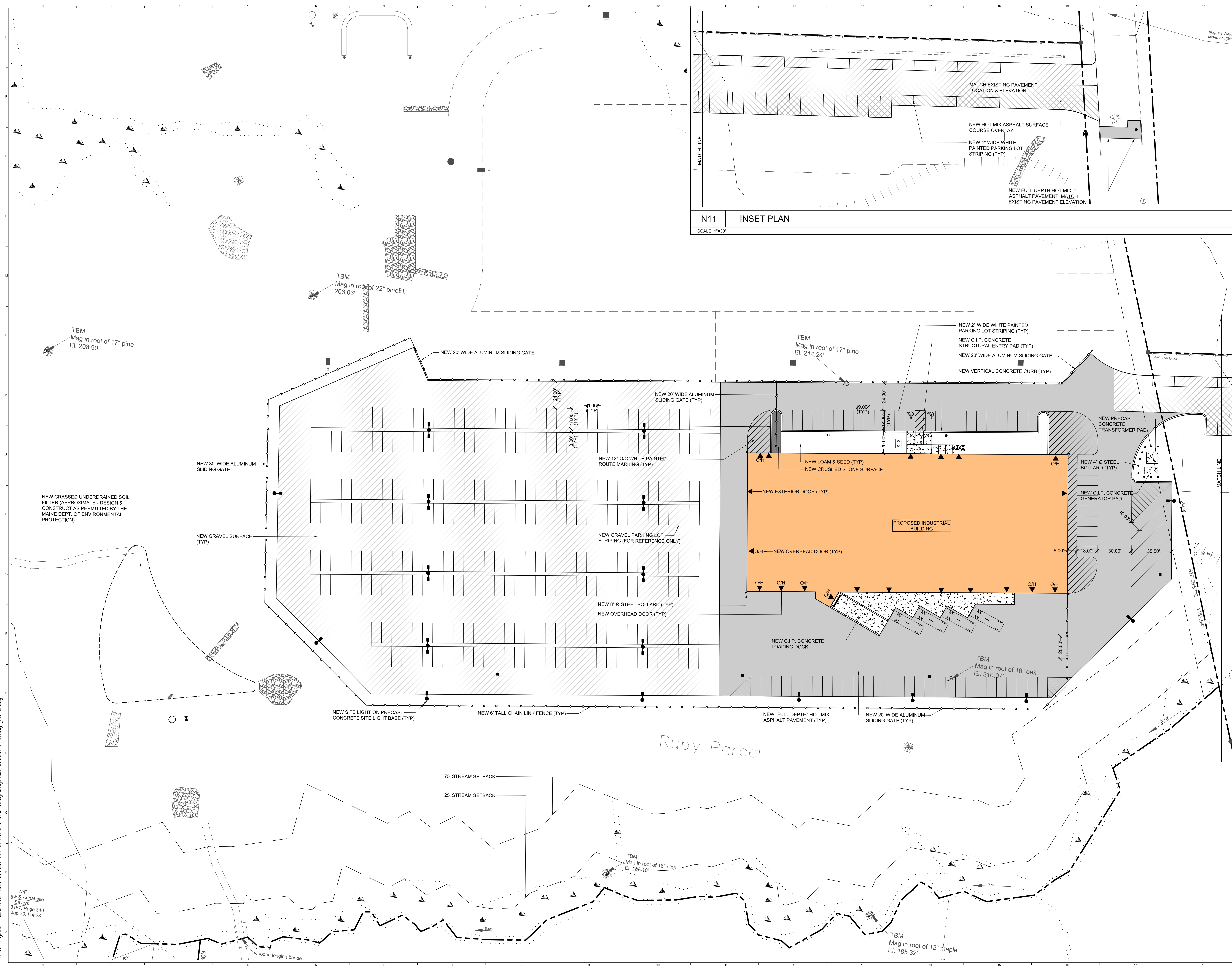
SITE REMOVALS PLAN

SHEET TITLE:	403520-SP101.DWG
WBRC CAD FILE:	403520
PROJECT NO.:	403520
SCALE:	1"=30'
PROJECT MANAGER:	SEP
DRAWN BY:	TOP
CHECKED BY:	JSK
SHEET NO.:	CD101

Jan 15, 2019 - 6:45am
 T:\02 Projects - Home\400-400\403520 BGS 66 Industrial Drive\Drawings\Site\403520-SP101.dwg jsk\kennedy

N/F
ew & Annabelle
Sayers
3187, Page 340
Apr 79, Lot 23

LIMIT OF SURVEY BY SHYKA,
SHEPPARD & GARSTER LAND
SURVEYORS

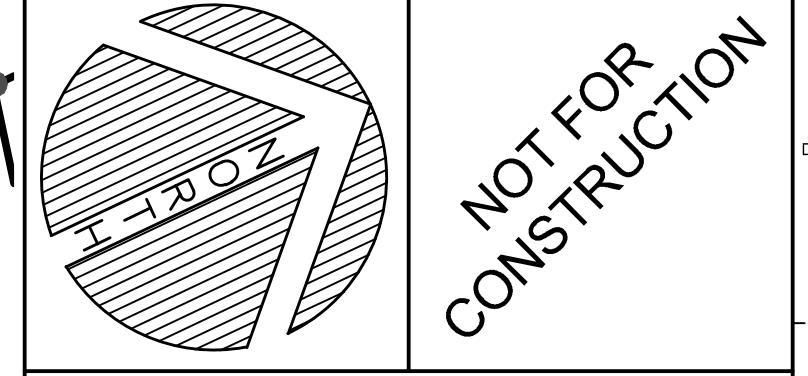


N11 INSET PLAN
SCALE: 1"=30'

- LAYOUT NOTES:**
1. ALL CURB RADII SHALL BE 5' UNLESS OTHERWISE NOTED.
 2. COORDINATE ALL SIDEWALK LOCATIONS WITH ARCH. AND STRUCTURAL DRAWINGS TO VERIFY NEW EXTERIOR DOOR LOCATIONS. FIELD ADJUST AS REQUIRED.
 3. REFER TO STRUCTURAL SHEETS FOR NEW FOUNDATION LAYOUT. COORDINATE LAYOUT WITH FOUNDATION CONTRACTOR.
 4. SEE SHEET CU101 FOR ADDITIONAL INFORMATION RELATED TO THE LAYOUT OF SITE LIGHTS AND UTILITY POLES AND THEIR RESPECTIVE CONDUIT AND WIRING.

EXISTING	LEGEND	PROPOSED
	UTILITY POLE	
	STREET LIGHTING	
	BUILDING LIGHTING	
	WATER SHUTOFF / GATE VALVE	
	TRANSFORMER PAD	
	DUMPSTER	
	MANHOLE	
	SEWER MANHOLE	
	CATCH BASIN	
	FIRE HYDRANT	
	SIGN	
	FENCING	
	P.T. GUARD RAIL	
	PAVEMENT	
	SIDEWALK	
	VERT. SLUFFFORM CONC. CURB	
	GRANITE CURB	
	PRECAST CONC. WHEEL STOP	
	GEO BLOCK RETAINING WALL	
	C/P CONCRETE RETAINING WALL	
	WOOD CHIP PLAY AREA	
	COARSE AGGREGATE	
	CENTERLINE	
	CONTROL PT.	
	PROPERTY SETBACK	
	PROPERTY LINE	
	ABUTTING PROPERTY LINE	
	TREE LINE	

REV.	DESCRIPTION	DATE
1	PROGRESS PRINT	01.14.19
0	FIRST DRAFT	12.07.18



WBRC
ARCHITECTS • ENGINEERS
WWW.WBRC.COM
BANGOR, MAINE 207-941-4511
PORTLAND, MAINE 207-528-4511
SANAROKA, FLORIDA 904-779-9811

BGS 66 INDUSTRIAL
PROJECT: 66 INDUSTRIAL DRIVE, AUGUSTA, ME

SHEET TITLE	
WBRC CAD FILE:	403520-SP101.DWG
PROJECT No.	4035.20
SCALE:	1"=30'
PROJECT MANAGER:	SEP
DRAWN BY:	TOP
CHECKED BY:	JSK
CP101	

Jan 15, 2019 - 6:46am
 T:\02 Projects - Home\4001-4000\403520 BGS 66 Industrial Dr\02 Design\Drawings\403520-SP101.dwg (jsh.kennedy)

N/F
 ew & Annabelle
 Sayers
 3187, Page 340
 Apr 79, Lot 23

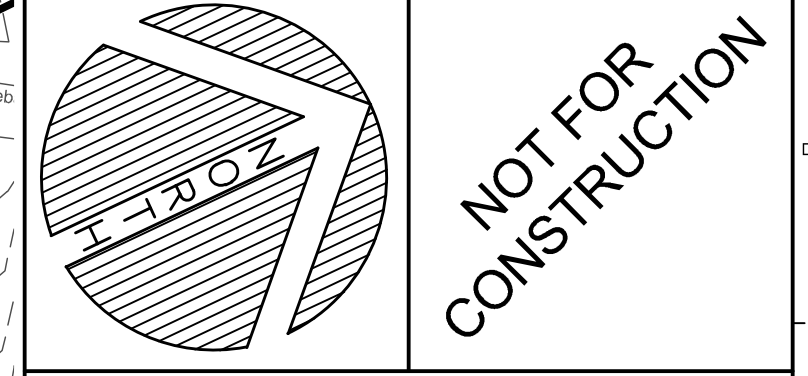


N11 INSET PLAN
SCALE: 1"=30'

GRADING NOTES:
 1. ALL DISTURBED AREAS NOT RECEIVING PAVEMENT SHALL BE PROVIDED WITH LOAM AND SEED PER THE CONTRACT DOCUMENTS.
 2. PROPOSED GRADING SHOWN ON THIS PLAN IS BASED ON A TOPOGRAPHIC SURVEY PREPARED BY HYKA, SHEPPARD & GARSTER LAND SURVEYORS (15/06, APRIL 26, 2013) AND TOPOGRAPHIC INFORMATION PROVIDED BY THE MAINE DEPARTMENT OF TRANSPORTATION (2018). TOPOGRAPHIC SURVEY SHOULD BE UPDATED TO CONFIRM EXISTING CONDITIONS.

EXISTING	LEGEND	PROPOSED
[Symbol]	LIMITS OF WETLAND	[Symbol]
[Symbol]	UTILITY POLE	[Symbol]
[Symbol]	STREET LIGHTING	[Symbol]
[Symbol]	BUILDING LIGHTING	[Symbol]
[Symbol]	WATER SHUTOFF / GATE VALVE	[Symbol]
[Symbol]	TRANSFORMER PAD	[Symbol]
[Symbol]	DUMPSTER	[Symbol]
[Symbol]	MANHOLE	[Symbol]
[Symbol]	SEWER MANHOLE	[Symbol]
[Symbol]	CATCH BASIN	[Symbol]
[Symbol]	FIRE HYDRANT	[Symbol]
[Symbol]	SIGN	[Symbol]
[Symbol]	FENCING	[Symbol]
[Symbol]	P.T. GUARD RAIL	[Symbol]
[Symbol]	PAVEMENT	[Symbol]
[Symbol]	SIDEWALK	[Symbol]
[Symbol]	VERT. SUPPORT CONC. CURB	[Symbol]
[Symbol]	GRANITE CURB	[Symbol]
[Symbol]	PRECAST CONC. WHEEL STOP	[Symbol]
[Symbol]	GEO BLOCK RETAINING WALL	[Symbol]
[Symbol]	CIP CONCRETE RETAINING WALL	[Symbol]
[Symbol]	WOOD CHIP PLAY AREA	[Symbol]
[Symbol]	COARSE AGGREGATE	[Symbol]
[Symbol]	CONTOURS	[Symbol]
[Symbol]	SEDIMENTATION CONTROL FENCE	[Symbol]
[Symbol]	FLOW PATH	[Symbol]
[Symbol]	TEMP. SILT INLET PROTECTION	[Symbol]
[Symbol]	BANK STABILIZATION MESH	[Symbol]
[Symbol]	PROPERTY SETBACK	[Symbol]
[Symbol]	PROPERTY LINE	[Symbol]
[Symbol]	ADJUTING PROPERTY LINE	[Symbol]
[Symbol]	TREE LINE	[Symbol]

REV.	DESCRIPTION	DATE
1	PROGRESS PRINT	01.14.19
0	FIRST DRAFT	12.07.18



WBRC
 ARCHITECTS • ENGINEERS
 WWW.WBRC.COM
 BANGOR, MAINE 207-941-4511
 PORTLAND, MAINE 207-528-4511
 SANARATA, FLORIDA 904-379-9811

BGS 66 INDUSTRIAL

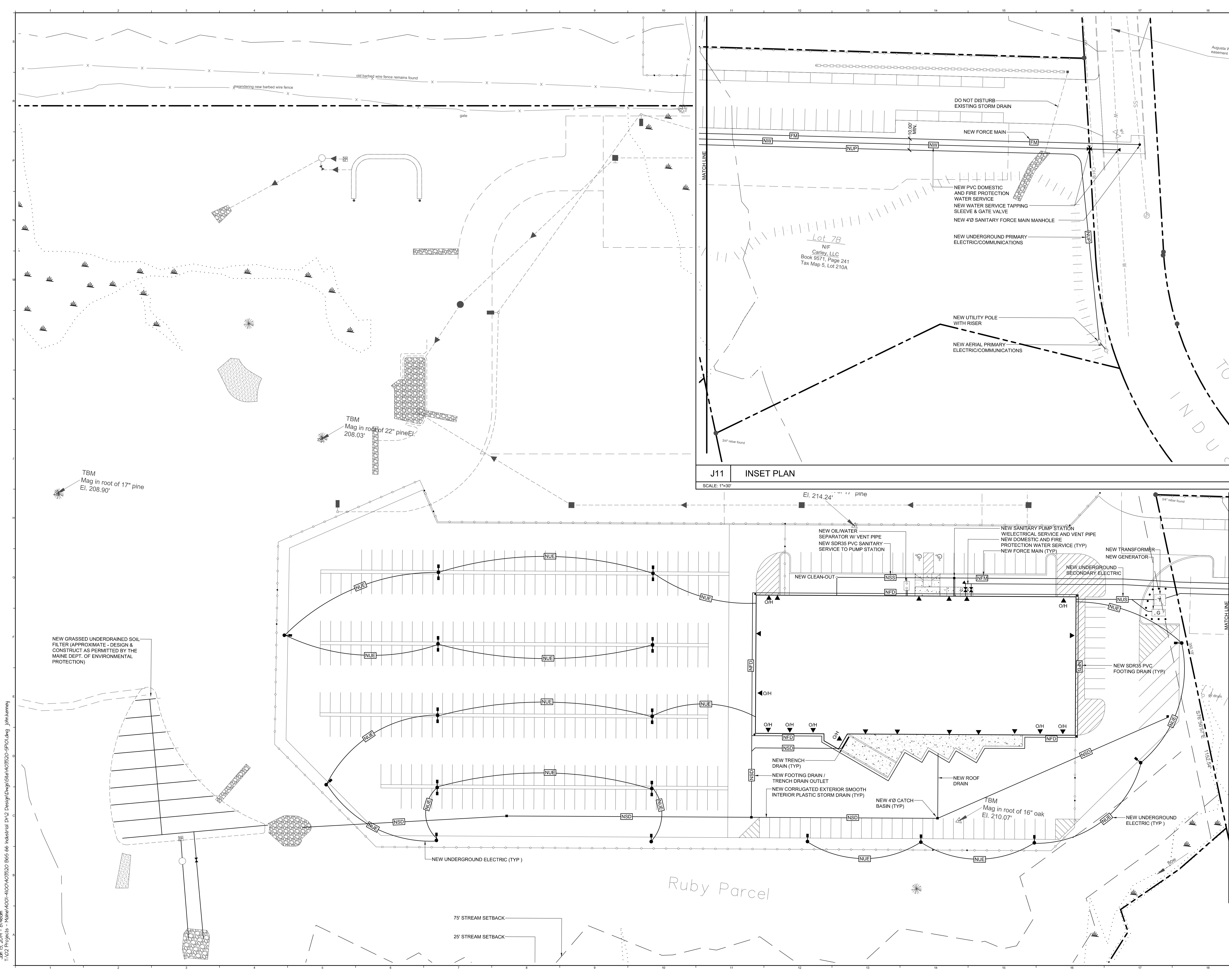
PROJECT: 66 INDUSTRIAL DRIVE, AUGUSTA, ME

SITE GRADING PLAN

SHEET TITLE:	403520-SP101.DWG
WBRC CAD FILE:	403520
PROJECT NO.:	403520
SCALE:	1"=30'
PROJECT MANAGER:	SEP
DRAWN BY:	TDP
CHECKED BY:	JSK
SHEET NO.:	CG101

Jan 15, 2019 - 6:45am
 T:\02 Projects - Maine\400-4000\403520 BGS 66 Industrial Drive Design\Drawings\403520-SP101.dwg jsm.kennedy

mnhabelle
 Page 340
 Lot 23



LEGEND

EXISTING	PROPOSED
LIMITS OF WETLAND	UTILITY POLE
UTILITY POLE	STREET LIGHTING
STREET LIGHTING	BUILDING LIGHTING
BUILDING LIGHTING	WATER SHUTOFF / GATE VALVE
WATER SHUTOFF / GATE VALVE	TRANSFORMER PAD
TRANSFORMER PAD	DUMPSTER
DUMPSTER	MANHOLE
MANHOLE	SEWER MANHOLE
SEWER MANHOLE	CATCH BASIN
CATCH BASIN	FIRE HYDRANT
FIRE HYDRANT	SIGN
SIGN	FENCING
FENCING	P.T. GUARD RAIL
P.T. GUARD RAIL	PAVEMENT
PAVEMENT	SIDEWALK
SIDEWALK	VERT. SLIPFORM CONC. CURB
VERT. SLIPFORM CONC. CURB	GRANITE CURB
GRANITE CURB	PRECAST CONC. WHEEL STOP
PRECAST CONC. WHEEL STOP	GEO BLOCK RETAINING WALL
GEO BLOCK RETAINING WALL	CIP CONCRETE RETAINING WALL
CIP CONCRETE RETAINING WALL	WOOD CHIP PLAY AREA
WOOD CHIP PLAY AREA	COARSE AGGREGATE
COARSE AGGREGATE	GAS SERVICE / MAIN
GAS SERVICE / MAIN	WATER SERVICE / MAIN
WATER SERVICE / MAIN	STORM DRAIN
STORM DRAIN	UNDERDRAIN
UNDERDRAIN	FOOTING DRAIN
FOOTING DRAIN	CLEANOUT
CLEANOUT	SANITARY SEWER
SANITARY SEWER	UNDERGROUND ELECTRIC
UNDERGROUND ELECTRIC	UNDERGROUND SECONDARY
UNDERGROUND SECONDARY	UNDERGROUND PRIMARY
UNDERGROUND PRIMARY	AERIAL ELEC. PRIMARY
AERIAL ELEC. PRIMARY	PROPERTY SETBACK
PROPERTY SETBACK	ABUTTING PROPERTY LINE
ABUTTING PROPERTY LINE	TREE LINE

REV.	DESCRIPTION	DATE
1	PROGRESS PRINT	01.14.19
0	FIRST DRAFT	12.07.18

WBRC ARCHITECTS + ENGINEERS
 WWW.WBRC.COM
 BANGOR, MAINE 207-941-4511
 PORTLAND, MAINE 207-528-4511
 SANARCTA, FLORIDA 904-777-9811

BGS 66 INDUSTRIAL

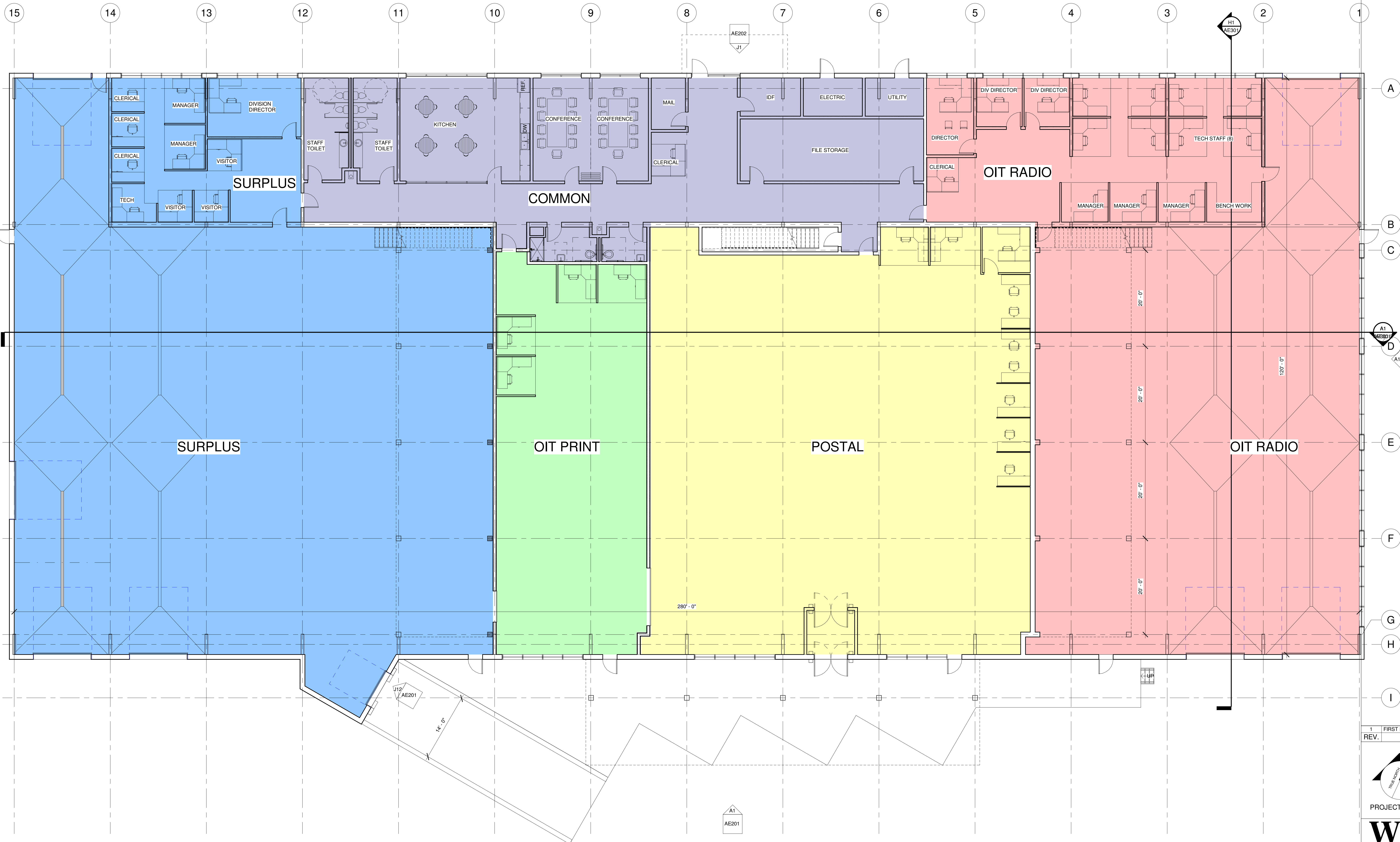
PROJECT: 66 INDUSTRIAL DRIVE, AUGUSTA, ME

SITE UTILITY PLAN

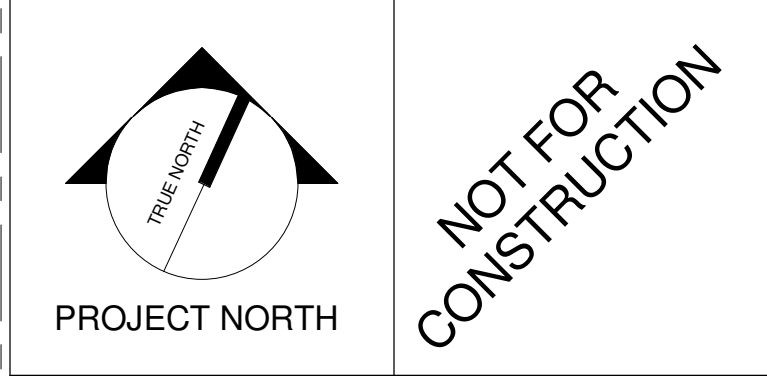
SHEET TITLE: 403520-SP101.DWG
 WBRC CAD FILE: 403520
 PROJECT No. 403520 GRAPHIC SCALE: 1"=30'
 SCALE: 1"=30'
 PROJECT MANAGER: SEP SHEET No. TDP
 DRAWN BY: TDP
 CHECKED BY: JSK

CU101

Jan 15, 2019 - 6:46am
 T:\02 Projects - Home\001-1000\02520 BGS 66 Industrial Dr\02 Design\Drawings\403520-SP101.dwg jsm\kennedy



REV.	DESCRIPTION	DATE
1	FIRST DRAFT	12.7.18



WBRC
ARCHITECTS • ENGINEERS
WWW.WBRCAE.COM
BANGOR, MAINE 207-943-4511
PORTLAND, MAINE 207-838-4511
SARASOTA, FLORIDA 941-556-0722

BGS 66 INDUSTRIAL

PROJECT: 66 INDUSTRIAL DR., AUGUSTA, ME

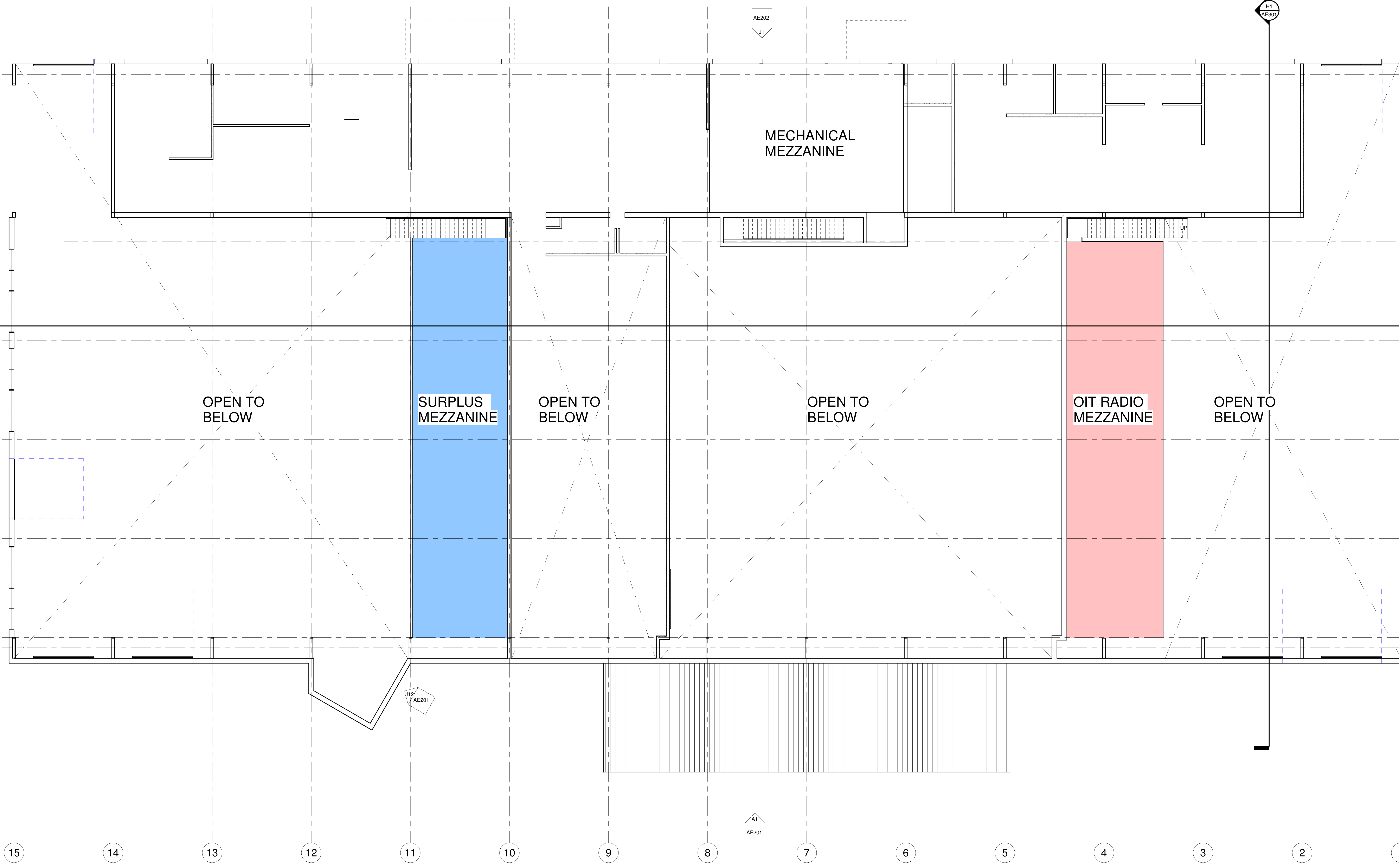
FIRST FLOOR PLAN Option 1

SHEET TITLE	
WBRC CAD FILE: FILE NAME - SHORT	
PROJECT No: 4035.20	GRAPHIC SCALE: 1" = 1'-0"
SCALE: 1/8" = 1'-0"	
PROJECT MANAGER: RBB	SHEET No: AE101
DRAWN BY: JRO	
CHECKED BY: RBB	

11/4/2019 4:50:07 PM U:\Autodesk AutoCAD\Revit\4035.20 - BGS 66 Industrial_18ss_rbb\chaut.rvt

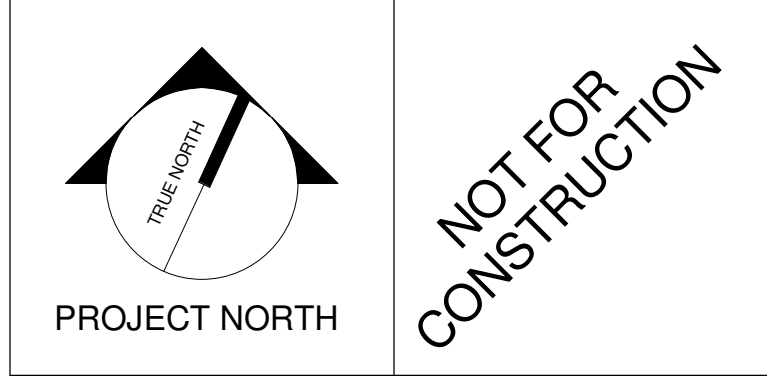
A1 FIRST FLOOR
1/8" = 1'-0" AE201

11/20/19 12:40:19 PM
U:\Autodesk\Autodesk\Revit\4035-20 - BGS 66 Industrial_iss\robchaud.rvt



- A
- B
- C
- D
- E
- F
- G
- H
- I

REV.	DESCRIPTION	DATE
1	FIRST DRAFT	12.7.18



WBRC
ARCHITECTS • ENGINEERS
WWW.WBRCAE.COM
BANGOR, MAINE 207-642-4511
PORTLAND, MAINE 207-838-4511
SARASOTA, FLORIDA 941-556-0722

BGS 66 INDUSTRIAL

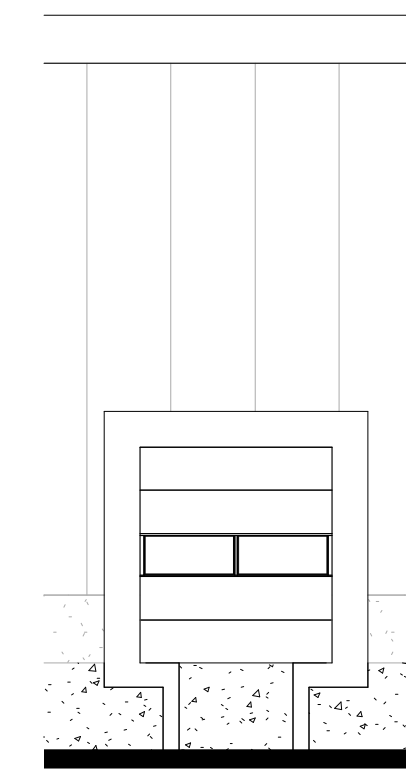
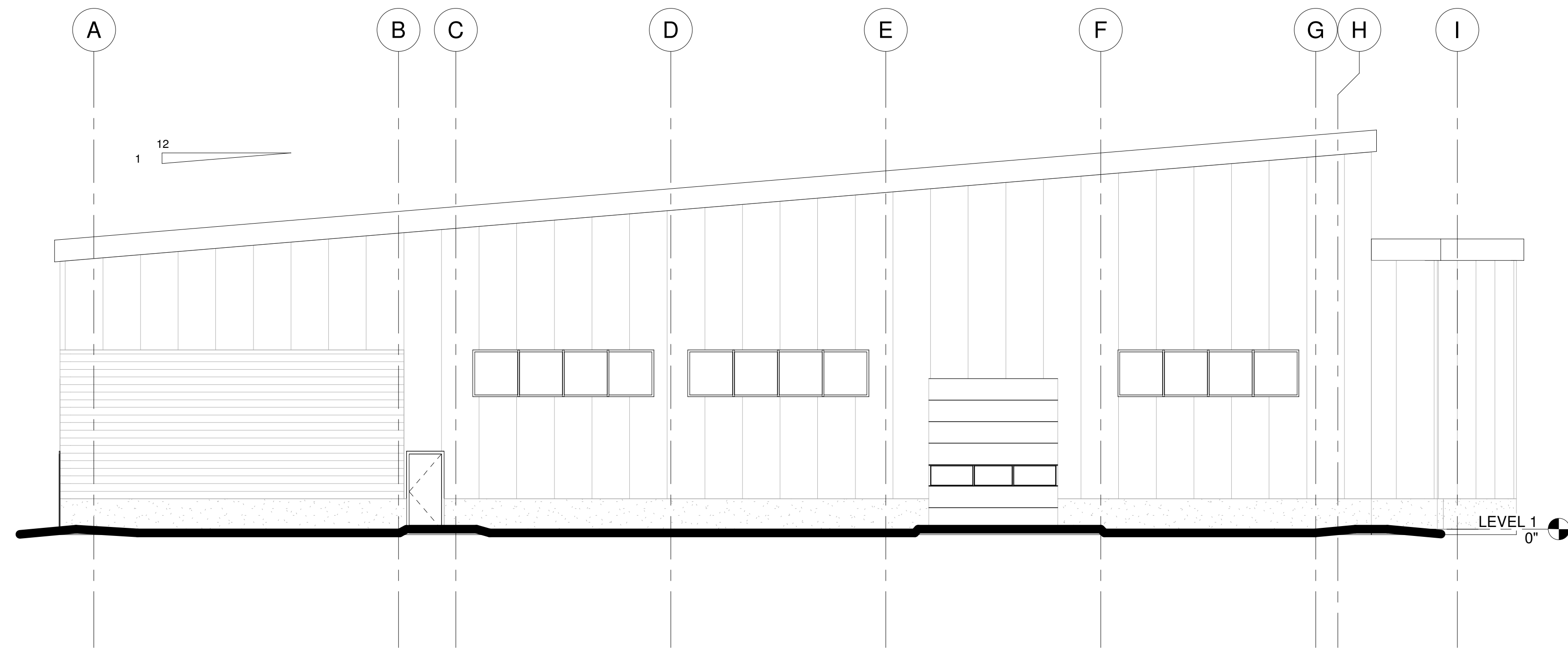
PROJECT: 66 INDUSTRIAL DR., AUGUSTA, ME

SECOND FLOOR PLAN Option 1

SHEET TITLE	
WBRC CAD FILE: FILE NAME - SHORT	GRAPHIC SCALE: 1" = 1'-0"
PROJECT No: 4035.20	DATE: 12/7/18
SCALE: 1/8" = 1'-0"	SHEET No: AE102
PROJECT MANAGER: RBB	DRAWN BY: JRO
CHECKED BY: RBB	

A1
SECOND FLOOR
1/8" = 1'-0"

AE301

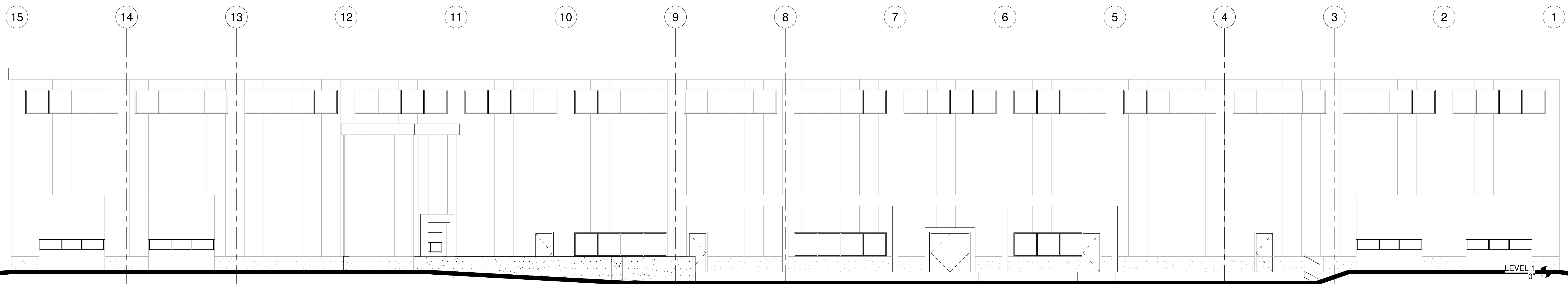


J1 NORTH ELEVATION

1/8" = 1'-0" AE101.2

J12 DOCK ELEVATION

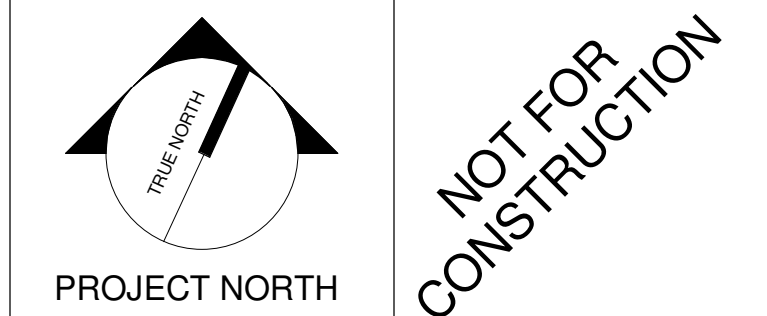
1/8" = 1'-0" AE101



A1 WEST ELEVATION

1/8" = 1'-0" AE101

1	FIRST DRAFT	12.7.18
REV.	DESCRIPTION	DATE



WBRC
ARCHITECTS • ENGINEERS

WWW.WBRCAE.COM
BANGOR, MAINE 207-942-4511
PORTLAND, MAINE 207-838-4511
SARASOTA, FLORIDA 941-556-0323

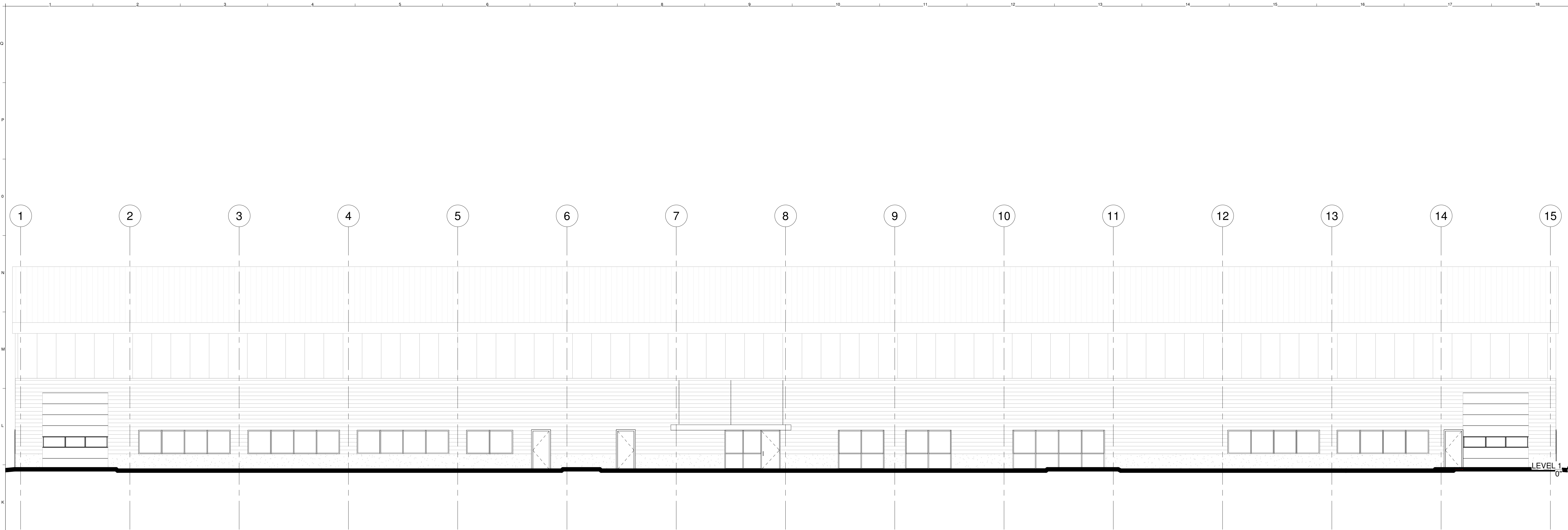
BGS 66 INDUSTRIAL

PROJECT: 66 INDUSTRIAL DR., AUGUSTA, ME

BUILDING ELEVATIONS

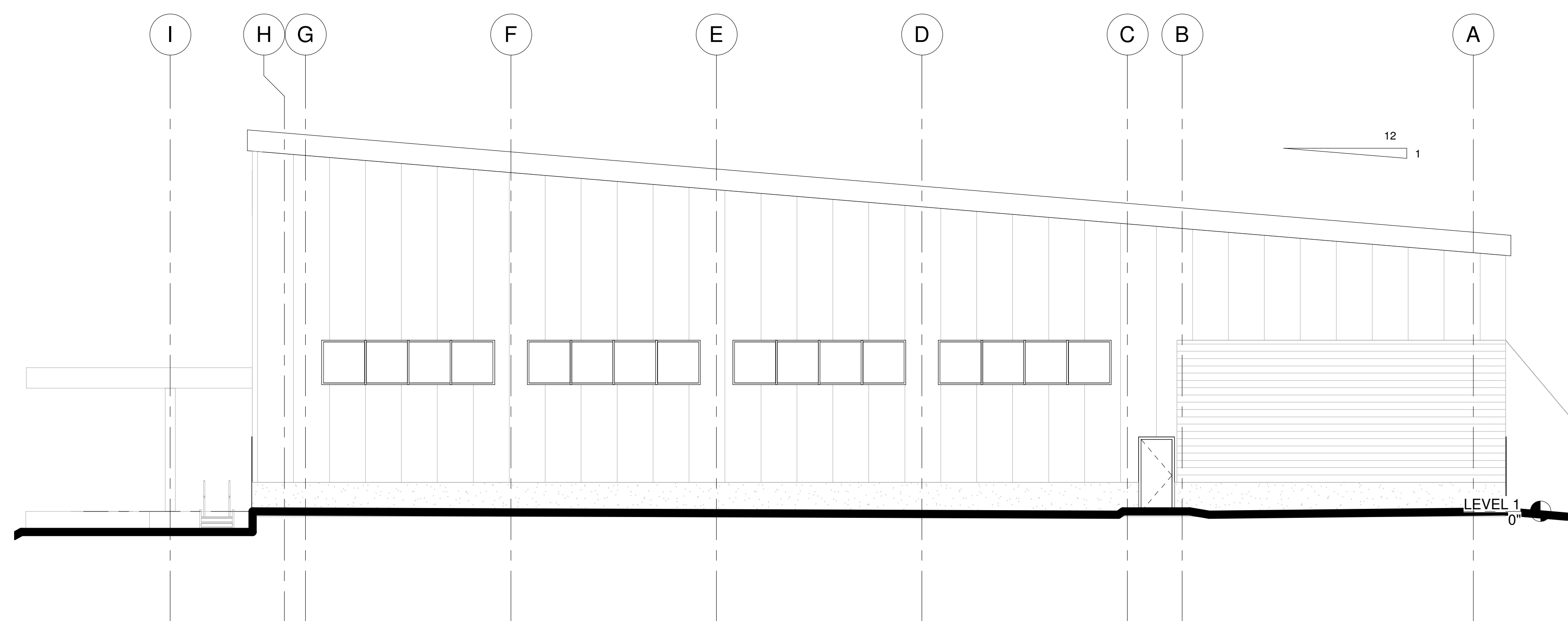
SHEET TITLE	
WBRC CAD FILE: FILE NAME - SHORT	4035.20
PROJECT No.	4035.20
SCALE:	1/8" = 1'-0"
PROJECT MANAGER:	RBB
DRAWN BY:	JRO
CHECKED BY:	RBB
AE201	

11/4/2019 4:50:12 PM U:\Autodesk\Autosaves\Revit\4035.20 - BGS 66 Industrial_1.rvt



J1 EAST ELEVATION

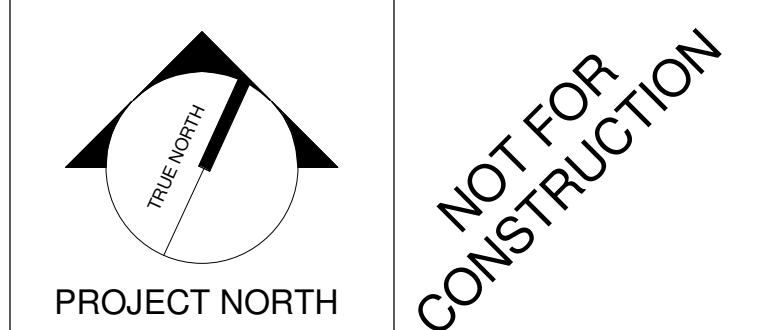
1/8" = 1'-0" AE101



A1 SOUTH ELEVATION

1/8" = 1'-0" AE101

REV.	DESCRIPTION	DATE
1	FIRST DRAFT	12.7.18



WBRC
ARCHITECTS • ENGINEERS
WWW.WBRCAE.COM
BANGOR, MAINE 207-942-4511
PORTLAND, MAINE 207-838-4511
SARASOTA, FLORIDA 941-556-0752

BGS 66 INDUSTRIAL

PROJECT: 66 INDUSTRIAL DR., AUGUSTA, ME

BUILDING ELEVATIONS

SHEET TITLE	
WBRC CAD FILE: FILE NAME - SHORT	GRAPHIC SCALE: 1"
PROJECT No: 4035.20	GRAPHIC SCALE: 1"
SCALE: 1/8" = 1'-0"	GRAPHIC SCALE: 1"
PROJECT MANAGER: RBB	SHEET No: AE202
DRAWN BY: JRO	
CHECKED BY: RBB	

11/2/2019 12:40:22 PM U:\Autodesk AutoCAD\Revit\4035.20 - BGS 66 Industrial_1.rvt