



**ABBREV DESCRIPTION**

ACV	AUTOMATIC CONTROL VALVE
AFF	ABOVE FINISHED FLOOR
AFG	ABOVE FINISHED GRADE
ALD	ACOUSTICAL LINED DUCT
AMS	AIRFLOW MEASURING STATION
APD	AIR PRESSURE DROP
ATC	AUTOMATIC TEMPERATURE CONTROL
B	BAROMETRIC DAMPER
BD	BACKDRAFT DAMPER
BHP	BRAKE HORSEPOWER
BPD	BYPASS DAMPER
BTU	BRITISH THERMAL UNITS
CBD	COUNTERBALANCED BACKDRAFT DAMPER
CFM	CUBIC FEET PER MINUTE
CHWR	CHILLED WATER RETURN
CHWS	CHILLED WATER SUPPLY
CO	CLEANOUT
CTE	CONNECT TO EXISTING
CWR	CONDENSER WATER RETURN
CWS	CONDENSER WATER SUPPLY
DCW	DOMESTIC COLD WATER
DEG.F	DEGREES FAHRENHEIT
DHW	DOMESTIC HOT WATER
DIA	DIAMETER
DN	DOWN
EAT	ENTERING AIR TEMPERATURE
ESP	EXTERNAL STATIC PRESSURE
EWT	ENTERING WATER TEMPERATURE
EXG	EXISTING
EXH	EXHAUST
F&T	FLOAT & THERMOSTATIC TRAP
F/S	FIRE AND SMOKE COMBINATION DAMPER
FC	FLEXIBLE CONNECTION
FD	FIRE DAMPER
FL	FINNED LENGTH OF RADIATION
FM	FLOW METER
FOR	FUEL OIL RETURN
FOS	FUEL OIL SUPPLY
FPF	FINS PER FOOT
FPI	FINS PER/INCH
FPM	FEET PER MINUTE
FT	FEET
FT-HD	FEET OF HEAD
FT-WG	FEET WATER GAUGE
FTR	FIN TUBE RADIATOR
GAL	GALLONS
GPM	GALLONS PER MINUTE
HP	HORSEPOWER
HPCR	HIGH PRESSURE CONDENSATE RETURN (OVER 30 PSIG)
HPS	HIGH PRESSURE STEAM (OVER 30PSIG)
HRR	HEAT RECOVERY RETURN
HRS	HEAT RECOVERY SUPPLY
HWR	HOT WATER RETURN
HWS	HOT WATER SUPPLY
IN	INCHES

**ABBREV DESCRIPTION**

LAT	LEAVING AIR TEMPERATURE
LPCR	LOW PRESSURE CONDENSATE RETURN (LESS THAN 15 PSI)
LPS	LOW PRESSURE STEAM(LESS THAN 15 PSI)
LRA	LOCKED ROTOR AMPS
LSGV	LOCK & SHIELD GATE VALVE
LWT	LEAVING WATER TEMPERATURE
M	MOTORIZED DAMPER
MAX	MAXIMUM
MBH	1000 BRITISH THERMAL UNITS
MCA	MINIMUM CIRCUIT AMPS
MIN	MINIMUM
MOPD	MAXIMUM OVERCURRENT PROTECTIVE DEVICE
MPCR	MEDIUM PRESSURE CONDENSATE RETURN(16-30 PSIG)
MPS	MEDIUM PRESSURE STEAM (16-30 PSIG)
NA	NOT APPLICABLE
NC	NOISE CRITERIA
NIC	NOT IN CONTRACT
NO	NORMALLY OPEN
NTS	NOT TO SCALE
OA	OUTSIDE AIR
OC	ON CENTER
OED	OPEN END DUCT
OS&Y	OUTSIDE SCREW & YOKE GATE VALVE
PD	PRESSURE DROP
PRD	PRESSURE RELIEF DAMPER
PRV	PRESSURE REDUCING VALVE
PSI	POUNDS PER SQUARE INCH
PSIG	POUNDS PER SQUARE INCH GAUGE
RET	RETURN
RET	RETURN
RL	REFRIGERANT LIQUID
RLA	RATED LOAD AMPERES
RPM	REVOLUTIONS PER MINUTE
RS	REFRIGERANT SUCTION
S	SMOKE DAMPER
SP	STATIC PRESSURE
SS	STAINLESS STEEL
SUP	SUPPLY
TEMP	TEMPERATURE
TT	THERMOSTATIC TRAP
TYP	TYPICAL
V	VOLUME DAMPER
VFD	VARIABLE FREQUENCY DRIVE
W/	WITH
W/O	WITHOUT
WC	WATER COLUMN
WG	WATER GAUGE
WMS	WELDED WIRE MESH SCREEN
WPD	WATER PRESSURE DROP
Z	ZONE DAMPER
PREFIX OF X	EXISTING

**PIPING LEGEND**

SYMBOL	DESCRIPTION
	EXISTING SUPPLY PIPING TO REMAIN
	EXISTING RETURN PIPING TO REMAIN
	NEW SUPPLY PIPING
	NEW RETURN PIPING
	ACV 2 - WAY
	ACV 3 - WAY
	CAP - PIPE
	CHECK VALVE
	COMBINATION BALANCING, FLOW MEASURING & TIGHT SHUT-OFF VALVE
	DIFFERENTIAL PRESSURE SENSOR
	FLOAT & THERMOSTATIC TRAP
	ISOLATION VALVE
	GLOBE VALVE
	INVERTED BUCKET TRAP
	LOCKSHIELD GATE VALVE
	MANUAL AIR VENT
	OS&Y GATE VALVE
	PETCOCK FOR GAUGE CONNECTION
	PIPE ANCHOR
	PIPE DOWN
	PIPE UP
	PIPE GUIDE
	PLUG VALVE
	PRESSURE GAUGE
	PRESSURE REDUCING VALVE
	PRESSURE RELIEF VALVE
	REDUCER - CONCENTRIC
	REDUCER - ECCENTRIC
	STRAINER
	TAKE - OFF FROM BOTTOM OF PIPE
	TAKE - OFF FROM TOP OF PIPE
	THERMOMETER
	THERMOMETER WELL
	THERMOSTATIC TRAP
	UNION
	RADIATION I.D. ( TYPE A, 10'-0" FINNED LENGTH, BALANCED TO 1.2 GPM) WITH DAMPER
	RADIATION I.D. ( TYPE A, 10'-0" FINNED LENGTH, BALANCED TO 1.2 GPM) WITHOUT DAMPER
	VALVE WITH HOSE-END DRAIN CONNECTION

**CONTROLS LEGEND**

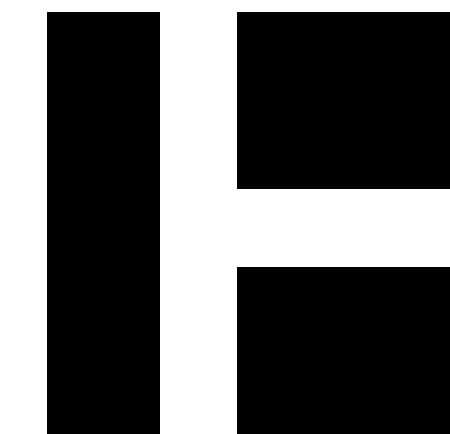
SYMBOL	DESCRIPTION
	HUMIDISTAT
	HUMIDITY SENSOR
	TEMPERATURE SENSOR
	THERMOSTAT
	THERMOSTAT COOLING
	THERMOSTAT HEATING
	THERMOSTAT - NIGHT
	THERMOSTAT - HEATING/COOLING

**GENERIC LEGEND**

SYMBOL	DESCRIPTION
	CONNECT NEW TO EXISTING
	DEMOLISHED EQUIPMENT, DUCTWORK, OR PIPING
	EXISTING EQUIPMENT TO REMAIN
	NEW EQUIPMENT
	SECTION I.D. ( SECTION A SHOWN ON DWG. M10.1)

**GENERAL NOTES**

- VISIT THE BUILDING SITE PRIOR TO BIDDING TO BECOME FAMILIAR WITH EXISTING CONDITIONS, AND TO TAKE MEASUREMENTS AS NECESSARY FOR COMPLETION OF THE WORK ASSOCIATED WITH THE DESIGN INTENT OF THE CONTRACT DOCUMENTS.
- COORDINATE WORK OF MECHANICAL SUBCONTRACTOR WITH WORK OF OTHER TRADES.
- PIPING AND EQUIPMENT ARE INDICATED DIAGRAMMATICALLY. FIELD-VERIFY LOCATIONS.
- MOUNT THERMOSTATS AND TEMPERATURE AND HUMIDITY SENSORS AT 48 INCHES AFF TO TOP OF ITEM. PROVIDE ELECTRICAL WALL BOX ATTACHED TO FRAMING.
- WHERE THERMOSTATS/TEMPERATURE SENSORS ARE LOCATED NEAR LIGHT SWITCHES, INSTALL SO THAT LIGHT SWITCHES ARE NEARER TO THE DOOR JAMBS. THE INTENT IS TO LOCATE THERMOSTATS/ TEMPERATURE SENSORS SO THEY WILL NOT INTERFERE WITH ACCESSIBILITY OF LIGHT SWITCHES.
- PIPING INDICATED IN OUTSIDE WALLS SHALL BE RUN ON THE WARM SIDE OF BUILDING INSULATION AND VAPOR BARRIER. BUILDING INSULATION BEHIND SUCH PIPING SHALL BE CONTINUOUS, WITHOUT JOINTS OR GAPS.
- PIPING SHALL BE CONCEALED EXCEPT IN MECHANICAL ROOMS AND AS INDICATED. WHERE PIPES DROP IN BLOCK WALLS, PROVIDE 1/2" THICK INSULATION MINIMUM.
- SEAL PIPING THRU MECHANICAL ROOM FLOORS AND PARTITIONS, AND THRU FIRE-RATED ASSEMBLIES, WITH FIRESTOP MATERIAL AS SPECIFIED.



HARRIMAN

AUBURN BOSTON PORTLAND PORTSMOUTH

**DOROTHEA DIX PSYCHIATRIC CENTER F-BUILDING HYDRONIC SYSTEM CONVERSION**

BANGOR, MAINE

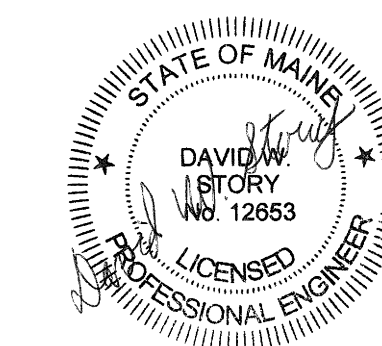
Harriman Project No. 18660

Key Plan Proj North

**CONSTRUCTION DOCUMENTS**

APRIL 25, 2019

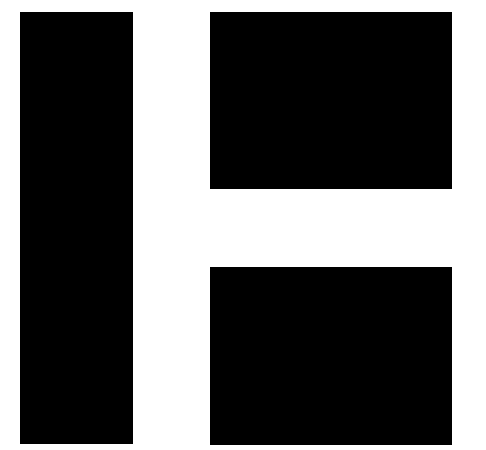
Rev Date Revision Description

PA / PE: DWS © 2019 Harriman Associates  
 Drawn By: JSL

**LEGEND & GENERAL NOTES**

M00.1



HARRIMAN

AUBURN BOSTON PORTLAND PORTSMOUTH

DOROTHEA DIX PSYCHIATRIC CENTER F-BUILDING HYDRONIC SYSTEM CONVERSION

BANGOR, MAINE

Harriman Project No. 18660

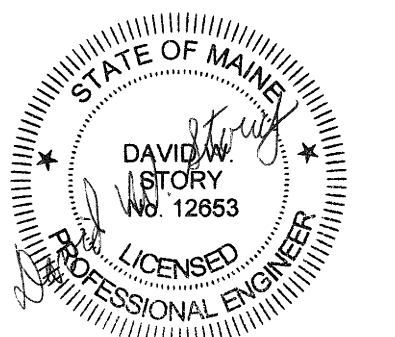
Key Plan Proj North



CONSTRUCTION DOCUMENTS

APRIL 25, 2019

Rev Date Revision Description



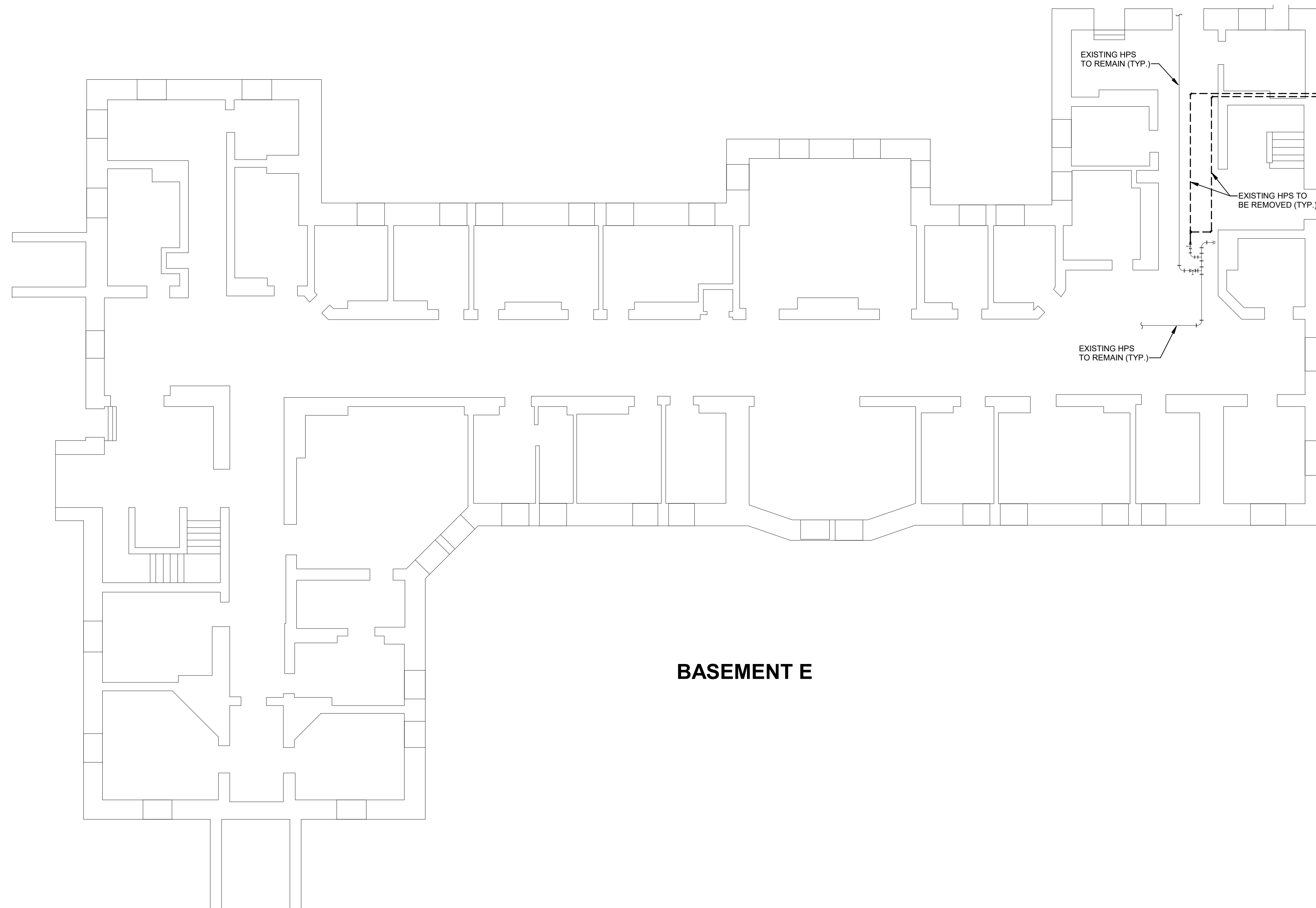
PA / PE: DWS © 2019 Harriman Associates  
Drawn By: JSL

BASEMENT E-BUILDING DEMOLITION PIPING

M06.1

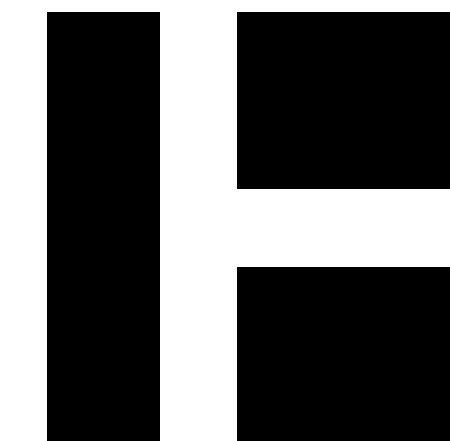
DEMO KEY NOTES

CODE	DESCRIPTION
D001	EXISTING STEAM HEATING ELEMENT IN ELEVATOR SHAFT TO BE REMOVED.
D002	EXISTING STEAM PRV STATION TO BE REMOVED.
D003	EXISTING BARE SINGLE TIER HEATING ELEMENT TO BE REMOVED.
D004	EXISTING CAST IRON RADIATOR TO BE REMOVED.
D005	EXISTING BARE DOUBLE TIER HEATING ELEMENT TO REMAIN.
D006	EXISTING RADIATOR FABRICATED BY SERPENTINE PIPING TO BE REMOVED.
D007	EXISTING PNEUMATIC AIR DRYER TO REMAIN.
D008	EXISTING PNEUMATIC OUTDOOR AIR TEMPERATURE RESET PANEL TO REMAIN.
D009	EXISTING PNEUMATIC DAY-NIGHT PANEL TO REMAIN.
D010	EXISTING SIMPLEX CONDENSATE RECEIVER TO BE REMOVED.
D011	EXISTING SHELL-AND-TUBE DOMESTIC HOT WATER HEAT EXCHANGER TO BE REMOVED.
D012	EXISTING ELECTRIC DOMESTIC WATER HEATER TO REMAIN.
D013	EXISTING DUPLIX CONDENSATE RECEIVER TO REMAIN.
D014	EXISTING BASEBOARD RADIATION TO REMAIN. ASSOCIATED PNEUMATIC CONTROL VALVE TO BE REMOVED, HOWEVER PNEUMATIC TUBING TO REMAIN.
D015	EXISTING CAST IRON RADIATOR TO BE REMOVED. ASSOCIATED PNEUMATIC CONTROL VALVE TO BE REMOVED, HOWEVER PNEUMATIC TUBING TO REMAIN.
D016	EXISTING CLASSROOM VENTILATOR TO REMAIN. CONTRACTOR SHALL SERVICE EQUIPMENT TO BE IN WORKABLE CONDITION.
D017	EXISTING PNEUMATIC THERMOSTAT TO BE REMOVED, HOWEVER PNEUMATIC TUBING TO REMAIN.
D018	EXISTING WATER COOLER TO BE REMOVED. CAP PIPING WITHIN WALL CAVITY AND REPAIR WALL SURFACE TO MATCH ADJACENT.
D019	EXISTING CONVECTOR TO BE REMOVED. ASSOCIATED PNEUMATIC CONTROL VALVE TO BE REMOVED, HOWEVER PNEUMATIC TUBING TO REMAIN.



BASEMENT E

1 BASEMENT E-BUILDING DEMOLITION PIPING PLAN  
SCALE: 1/8" = 1'-0"



HARRIMAN

AUBURN BOSTON PORTLAND PORTSMOUTH

DOROTHEA DIX PSYCHIATRIC CENTER F-BUILDING HYDRONIC SYSTEM CONVERSION

BANGOR, MAINE

Harriman Project No. 18660

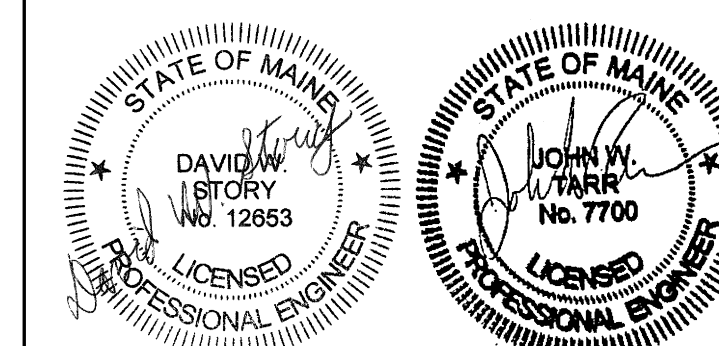
Key Plan Proj North



CONSTRUCTION DOCUMENTS

APRIL 25, 2019

Rev Date Revision Description



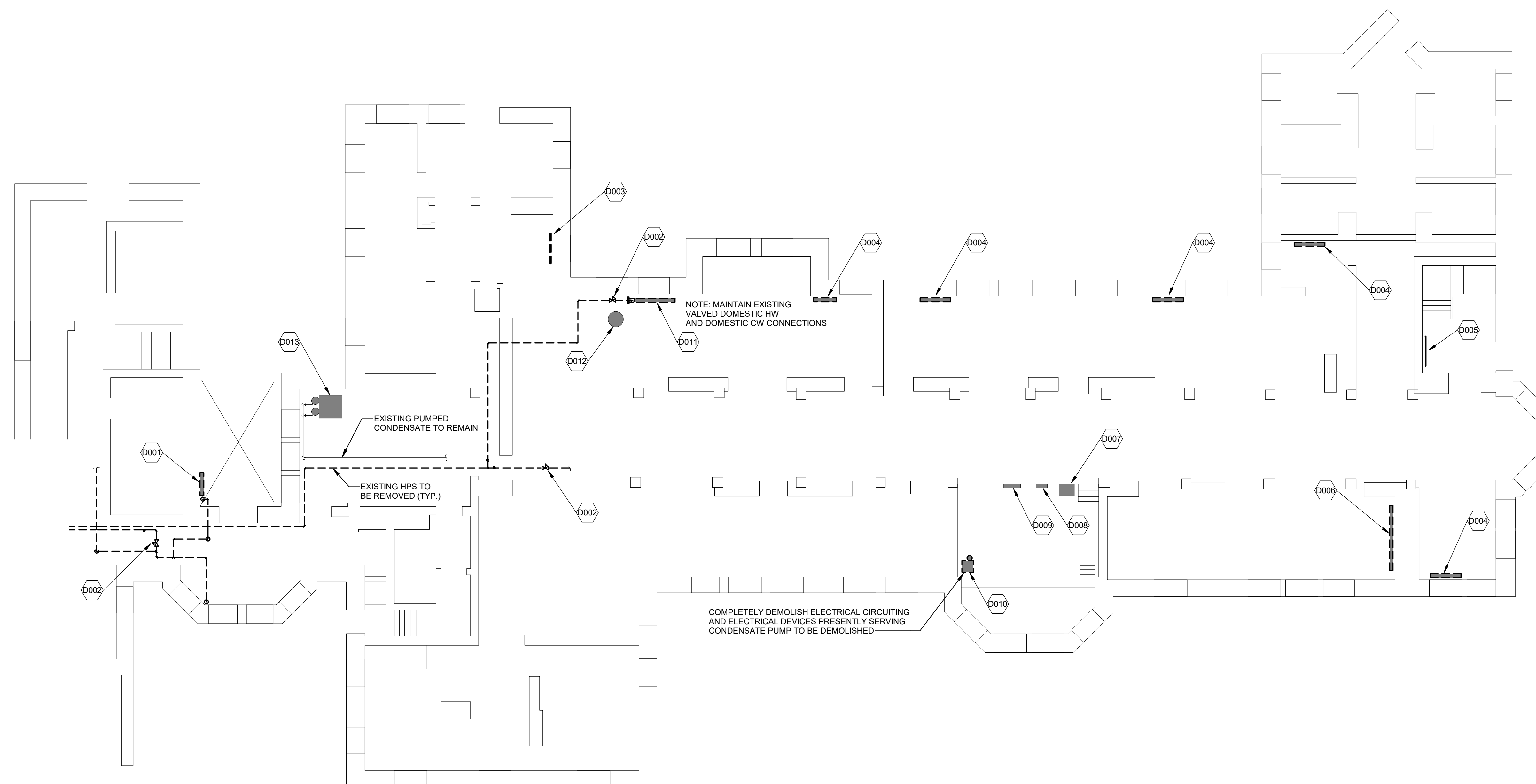
PA / PE: DWS © 2019 Harriman Associates  
Drawn By: JSL

BASEMENT F-BUILDING DEMOLITION PIPING

M06.2

DEMO KEY NOTES

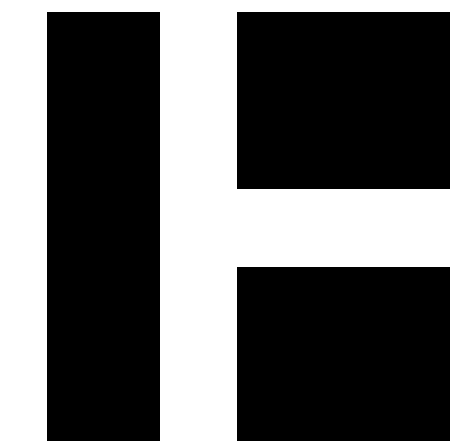
CODE	DESCRIPTION
D001	EXISTING STEAM HEATING ELEMENT IN ELEVATOR SHAFT TO BE REMOVED.
D002	EXISTING STEAM PRV STATION TO BE REMOVED.
D003	EXISTING BARE SINGLE TIER HEATING ELEMENT TO BE REMOVED.
D004	EXISTING CAST IRON RADIATOR TO BE REMOVED.
D005	EXISTING BARE DOUBLE TIER HEATING ELEMENT TO REMAIN.
D006	EXISTING RADIATOR FABRICATED BY SERPENTINE PIPING TO BE REMOVED.
D007	EXISTING PNEUMATIC AIR DRYER TO REMAIN.
D008	EXISTING PNEUMATIC OUTDOOR AIR TEMPERATURE RESET PANEL TO REMAIN.
D009	EXISTING PNEUMATIC DAY-NIGHT PANEL TO REMAIN.
D010	EXISTING SIMPLEX CONDENSATE RECEIVER TO BE REMOVED.
D011	EXISTING SHELL-AND-TUBE DOMESTIC HOT WATER HEAT EXCHANGER TO BE REMOVED.
D012	EXISTING ELECTRIC DOMESTIC WATER HEATER TO REMAIN.
D013	EXISTING DUPLEX CONDENSATE RECEIVER TO REMAIN.
D014	EXISTING BASEBOARD RADIATION TO REMAIN. ASSOCIATED PNEUMATIC CONTROL VALVE TO BE REMOVED, HOWEVER PNEUMATIC TUBING TO REMAIN.
D015	EXISTING CAST IRON RADIATOR TO BE REMOVED. ASSOCIATED PNEUMATIC CONTROL VALVE TO BE REMOVED, HOWEVER PNEUMATIC TUBING TO REMAIN.
D016	EXISTING CLASSROOM VENTILATOR TO REMAIN. CONTRACTOR SHALL SERVICE EQUIPMENT TO BE IN WORKABLE CONDITION.
D017	EXISTING PNEUMATIC THERMOSTAT TO BE REMOVED, HOWEVER PNEUMATIC TUBING TO REMAIN.
D018	EXISTING WATER COOLER TO BE REMOVED. CAP PIPING WITHIN WALL CAVITY AND REPAIR WALL SURFACE TO MATCH ADJACENT.
D019	EXISTING CONVECTOR TO BE REMOVED. ASSOCIATED PNEUMATIC CONTROL VALVE TO BE REMOVED, HOWEVER PNEUMATIC TUBING TO REMAIN.



BASEMENT F

1 BASEMENT F-BUILDING DEMOLITION PIPING PLAN  
SCALE: 1/8" = 1'-0"

Plot Date: 5/6/2019 8:17:19 PM



HARRIMAN

AUBURN BOSTON PORTLAND PORTSMOUTH

DOROTHEA DIX PSYCHIATRIC CENTER F-BUILDING HYDRONIC SYSTEM CONVERSION

BANGOR, MAINE

Harriman Project No. 18660

Key Plan Proj North

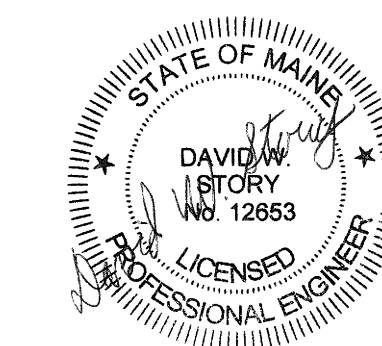


CONSTRUCTION DOCUMENTS

APRIL 25, 2019

Rev Date Revision Description

Table with 2 columns: Rev Date, Revision Description

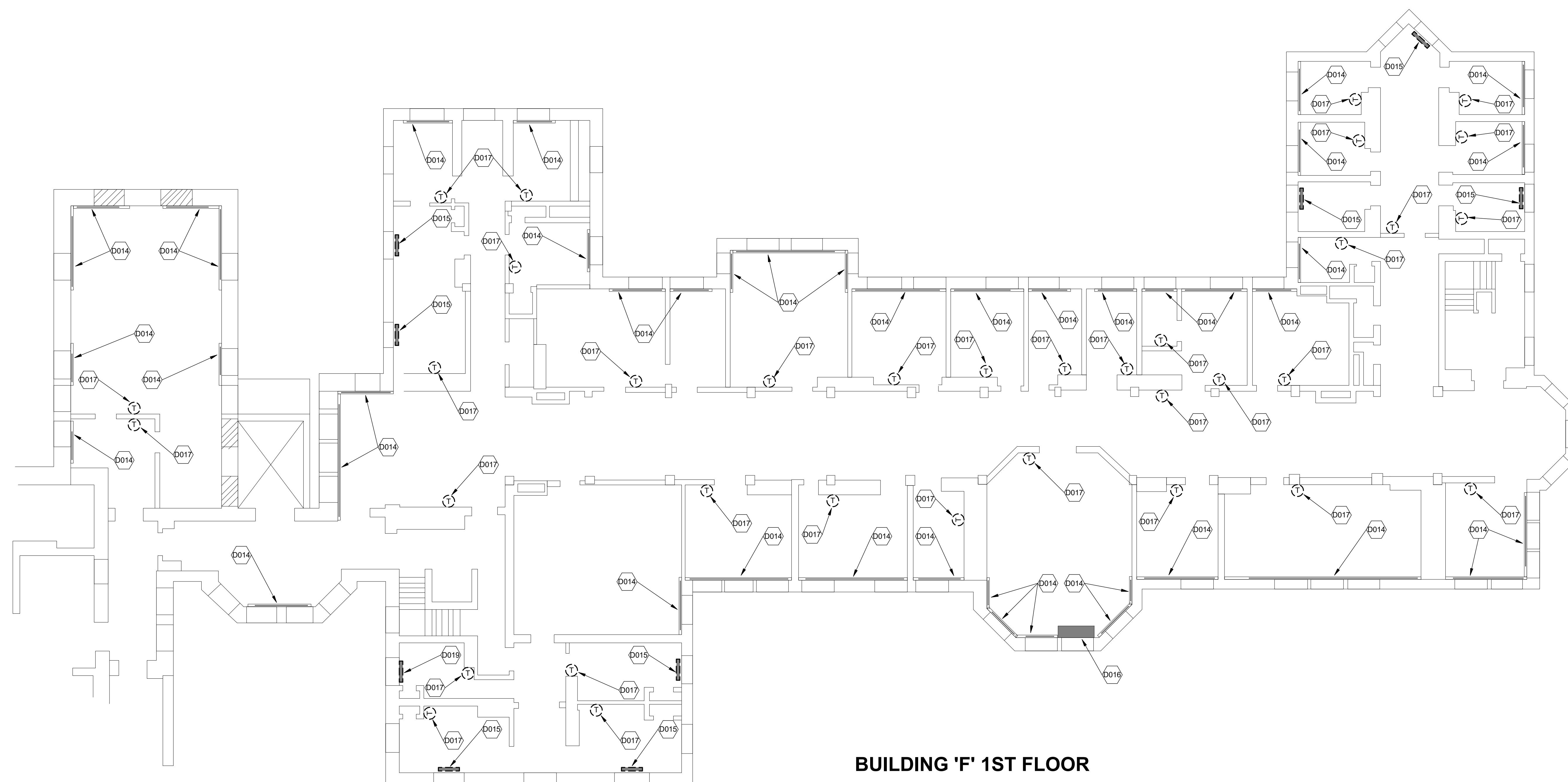


PA / PE: DWS © 2019 Harriman Associates  
Drawn By: JSL

FIRST FLOOR F-BUILDING DEMOLITION PIPING

M06.3

DEMO KEY NOTES table with 2 columns: CODE, DESCRIPTION



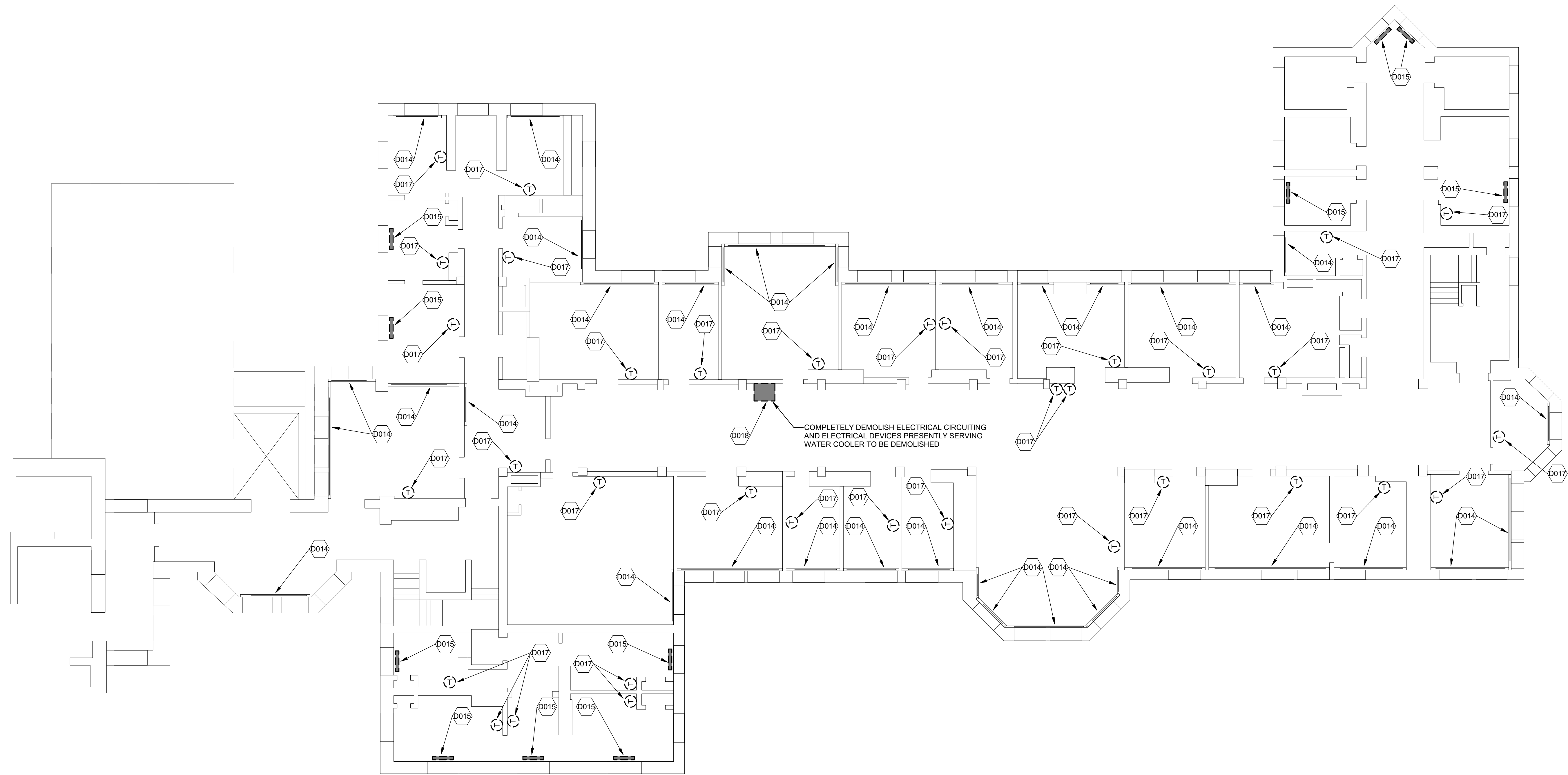
BUILDING 'F' 1ST FLOOR

1 FIRST FLOOR F-BUILDING DEMOLITION PIPING PLAN SCALE: 1/8" = 1'-0"

Plot Date: 5/6/2019 8:17:36 PM

# DEMO KEY NOTES

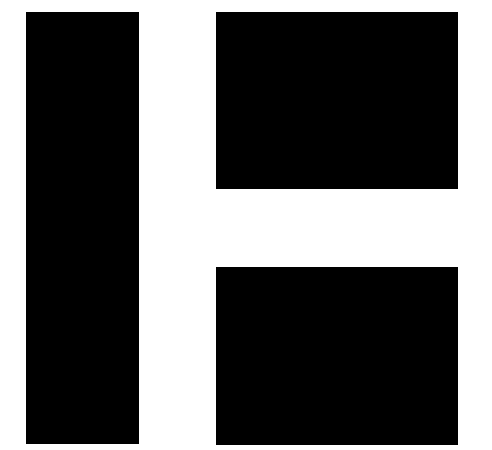
CODE	DESCRIPTION
D001	EXISTING STEAM HEATING ELEMENT IN ELEVATOR SHAFT TO BE REMOVED.
D002	EXISTING STEAM PRV STATION TO BE REMOVED.
D003	EXISTING BARE SINGLE TIER HEATING ELEMENT TO BE REMOVED.
D004	EXISTING CAST IRON RADIATOR TO BE REMOVED.
D005	EXISTING BARE DOUBLE TIER HEATING ELEMENT TO REMAIN.
D006	EXISTING RADIATOR FABRICATED BY SERPENTINE PIPING TO BE REMOVED.
D007	EXISTING PNEUMATIC AIR DRYER TO REMAIN.
D008	EXISTING PNEUMATIC OUTDOOR AIR TEMPERATURE RESET PANEL TO REMAIN.
D009	EXISTING PNEUMATIC DAY-NIGHT PANEL TO REMAIN.
D010	EXISTING SIMPLEX CONDENSATE RECEIVER TO BE REMOVED.
D011	EXISTING SHELL-AND-TUBE DOMESTIC HOT WATER HEAT EXCHANGER TO BE REMOVED.
D012	EXISTING ELECTRIC DOMESTIC WATER HEATER TO REMAIN.
D013	EXISTING DUPLEX CONDENSATE RECEIVER TO REMAIN.
D014	EXISTING BASEBOARD RADIATION TO REMAIN. ASSOCIATED PNEUMATIC CONTROL VALVE TO BE REMOVED. HOWEVER PNEUMATIC TUBING TO REMAIN.
D015	EXISTING CAST IRON RADIATOR TO BE REMOVED. ASSOCIATED PNEUMATIC CONTROL VALVE TO BE REMOVED. HOWEVER PNEUMATIC TUBING TO REMAIN.
D016	EXISTING CLASSROOM VENTILATOR TO REMAIN. CONTRACTOR SHALL SERVICE EQUIPMENT TO BE IN WORKABLE CONDITION.
D017	EXISTING PNEUMATIC THERMOSTAT TO BE REMOVED. HOWEVER PNEUMATIC TUBING TO REMAIN.
D018	EXISTING WATER COOLER TO BE REMOVED. CAP PIPING WITHIN WALL CAVITY AND REPAIR WALL SURFACE TO MATCH ADJACENT.
D019	EXISTING CONVECTOR TO BE REMOVED. ASSOCIATED PNEUMATIC CONTROL VALVE TO BE REMOVED. HOWEVER PNEUMATIC TUBING TO REMAIN.



**BUILDING 'F' 2ND FLOOR**

**1 SECOND FLOOR F-BUILDING DEMOLITION PIPING PLAN**  
SCALE: 1/8" = 1'-0"

Plot Date: 5/6/2019 8:17:52 PM



**HARRIMAN**

AUBURN BOSTON PORTLAND PORTSMOUTH

**DOROTHEA DIX  
PSYCHIATRIC  
CENTER  
F-BUILDING HYDRONIC  
SYSTEM CONVERSION**

BANGOR, MAINE

Harriman Project No. 18660

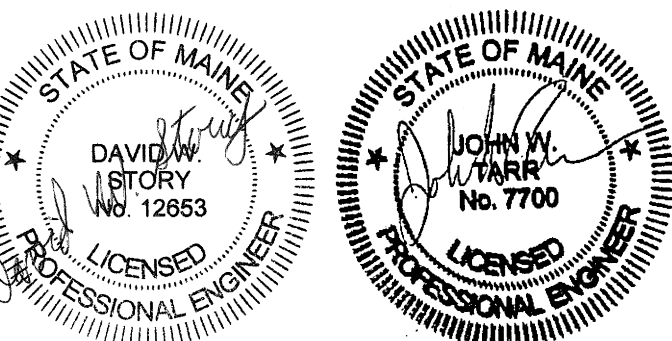
Key Plan Proj North



**CONSTRUCTION DOCUMENTS**

APRIL 25, 2019

Rev Date Revision Description



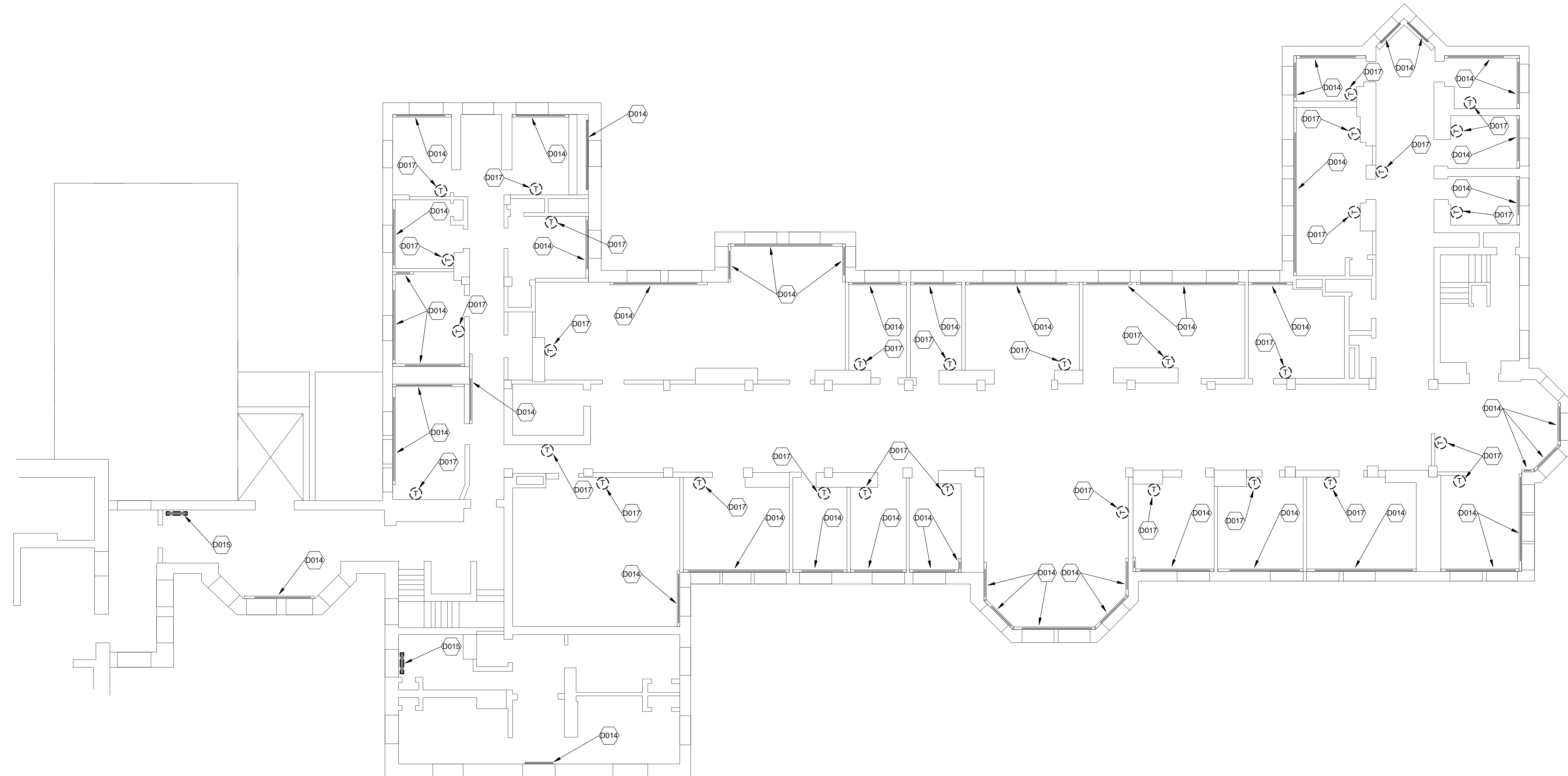
PA / PE: DWS © 2019  
Drawn By: JSL Harriman Associates

**SECOND FLOOR  
F-BUILDING DEMOLITION  
PIPING**

**M06.4**

# DEMO KEY NOTES

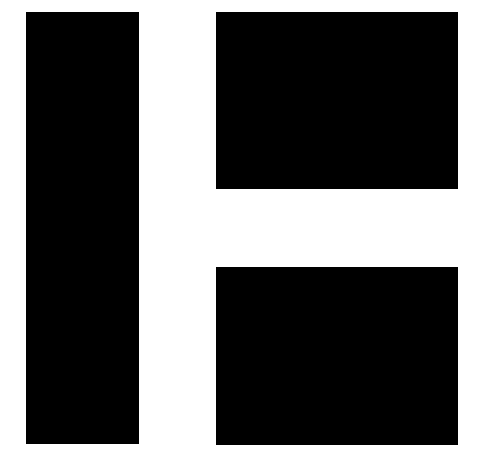
CODE	DESCRIPTION
D001	EXISTING STEAM HEATING ELEMENT IN ELEVATOR SHAFT TO BE REMOVED.
D002	EXISTING STEAM PRV STATION TO BE REMOVED.
D003	EXISTING BARE SINGLE TIER HEATING ELEMENT TO BE REMOVED.
D004	EXISTING CAST IRON RADIATOR TO BE REMOVED.
D005	EXISTING BARE DOUBLE TIER HEATING ELEMENT TO REMAIN.
D006	EXISTING RADIATOR FABRICATED BY SERPENTINE PIPING TO BE REMOVED.
D007	EXISTING PNEUMATIC AIR DRYER TO REMAIN.
D008	EXISTING PNEUMATIC OUTDOOR AIR TEMPERATURE RESET PANEL TO REMAIN.
D009	EXISTING PNEUMATIC DAY-NIGHT PANEL TO REMAIN.
D010	EXISTING SIMPLEX CONDENSATE RECEIVER TO BE REMOVED.
D011	EXISTING SHELL-AND-TUBE DOMESTIC HOT WATER HEAT EXCHANGER TO BE REMOVED.
D012	EXISTING ELECTRIC DOMESTIC WATER HEATER TO REMAIN.
D013	EXISTING DUPLEX CONDENSATE RECEIVER TO REMAIN.
D014	EXISTING BASEBOARD RADIATION TO REMAIN. ASSOCIATED PNEUMATIC CONTROL VALVE TO BE REMOVED, HOWEVER PNEUMATIC TUBING TO REMAIN.
D015	EXISTING CAST IRON RADIATOR TO BE REMOVED. ASSOCIATED PNEUMATIC CONTROL VALVE TO BE REMOVED, HOWEVER PNEUMATIC TUBING TO REMAIN.
D016	EXISTING CLASSROOM VENTILATOR TO REMAIN. CONTRACTOR SHALL SERVICE EQUIPMENT TO BE IN WORKABLE CONDITION.
D017	EXISTING PNEUMATIC THERMOSTAT TO BE REMOVED, HOWEVER PNEUMATIC TUBING TO REMAIN.
D018	EXISTING WATER COOLER TO BE REMOVED. CAP PIPING WITHIN WALL CAVITY AND REPAIR WALL SURFACE TO MATCH ADJACENT.
D019	EXISTING CONVECTOR TO BE REMOVED. ASSOCIATED PNEUMATIC CONTROL VALVE TO BE REMOVED, HOWEVER PNEUMATIC TUBING TO REMAIN.



**BUILDING 'F' 3RD FLOOR**

**1 THIRD FLOOR F-BUILDING DEMOLITION PIPING PLAN**  
SCALE: 1/8" = 1'-0"

Plot Date: 5/6/2019 8:18:09 PM



**HARRIMAN**

AUBURN BOSTON PORTLAND PORTSMOUTH

**DOROTHEA DIX  
PSYCHIATRIC  
CENTER  
F-BUILDING HYDRONIC  
SYSTEM CONVERSION**

BANGOR, MAINE

Harriman Project No. 18660

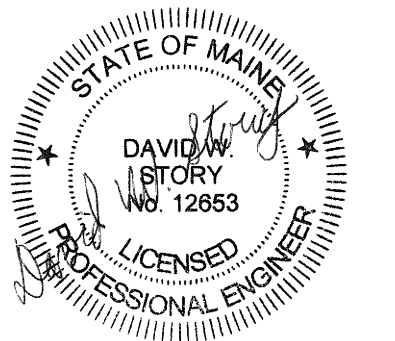
Key Plan Proj North



**CONSTRUCTION DOCUMENTS**

APRIL 25, 2019

Rev Date Revision Description

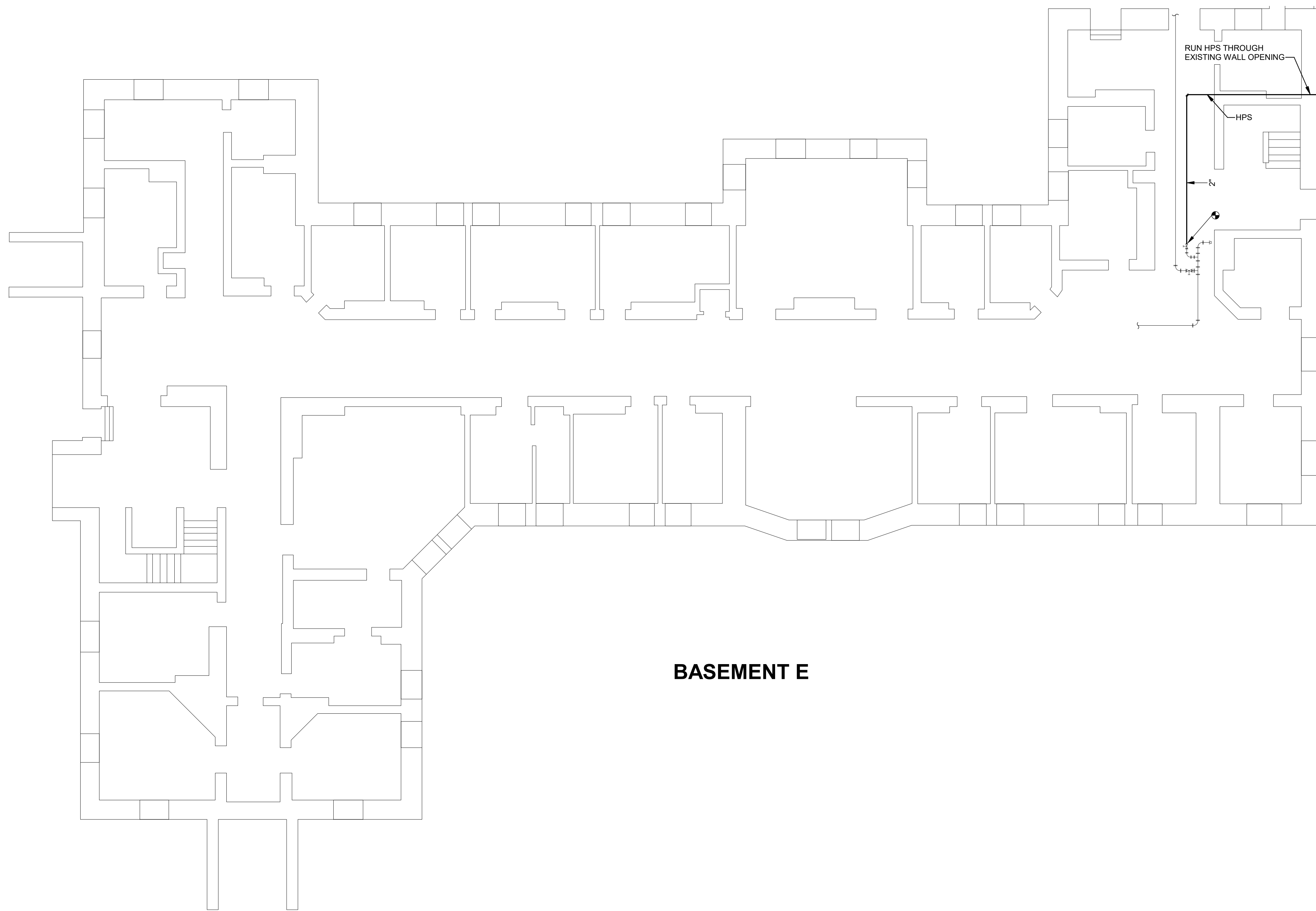


PA / PE: DWS © 2019  
Drawn By: JSL Harriman Associates

**THIRD FLOOR F-BUILDING  
DEMOLITION PIPING**

**M06.5**

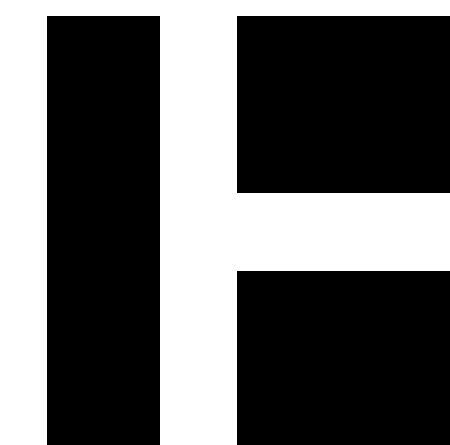
KEY NOTES	
CODE	DESCRIPTION
M001	PIPING UP THROUGH FLOOR TO HEATING ELEMENT ON FLOOR ABOVE.
M002	PIPING RISER THROUGH FLOOR AS PART OF NEW HOT WATER HEATING SYSTEM.
M003	PIPING SHALL BE EQUAL TO WIRSBO HEPEX BY UPONOR. PIPING SHALL BE 3/4" PRE-INSULATED WITH 1-1/2" INSULATION.



**BASEMENT E**

**1 BASEMENT E-BUILDING PIPING PLAN**  
SCALE: 1/8" = 1'-0"

Plot Date: 5/6/2019 8:18:25 PM



**HARRIMAN**

AUBURN BOSTON PORTLAND PORTSMOUTH

**DOROTHEA DIX  
PSYCHIATRIC  
CENTER  
F-BUILDING HYDRONIC  
SYSTEM CONVERSION**

BANGOR, MAINE

Harriman Project No. 18660

Key Plan Proj North

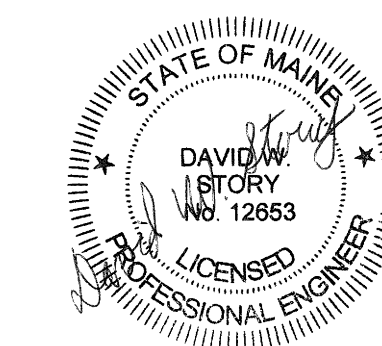


**CONSTRUCTION DOCUMENTS**

APRIL 25, 2019

Rev Date Revision Description

Rev Date	Revision Description

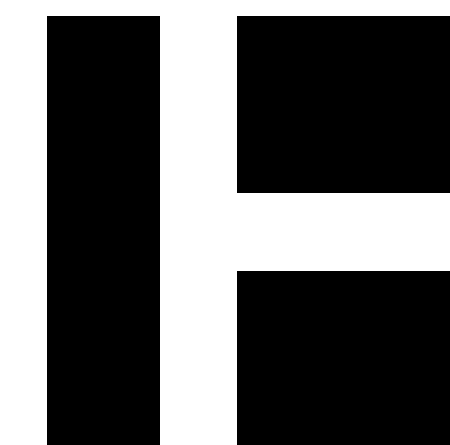



PA / PE: DWS © 2019  
Drawn By: JSL Harriman Associates

**BASEMENT E-BUILDING  
PIPING**

**M20.1**





HARRIMAN

AUBURN BOSTON PORTLAND PORTSMOUTH

DOROTHEA DIX PSYCHIATRIC CENTER F-BUILDING HYDRONIC SYSTEM CONVERSION

BANGOR, MAINE

Harriman Project No. 18660

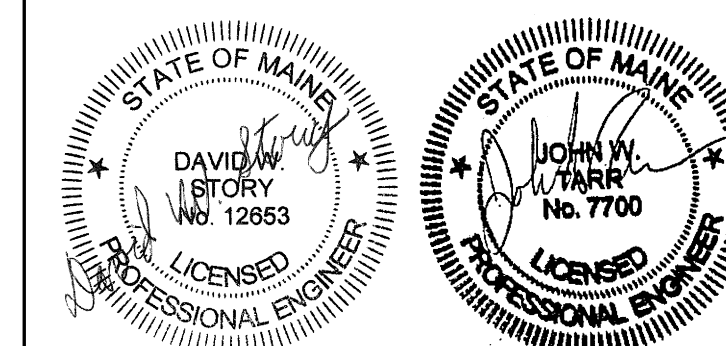
Key Plan Proj North



CONSTRUCTION DOCUMENTS

APRIL 25, 2019

Rev Date Revision Description

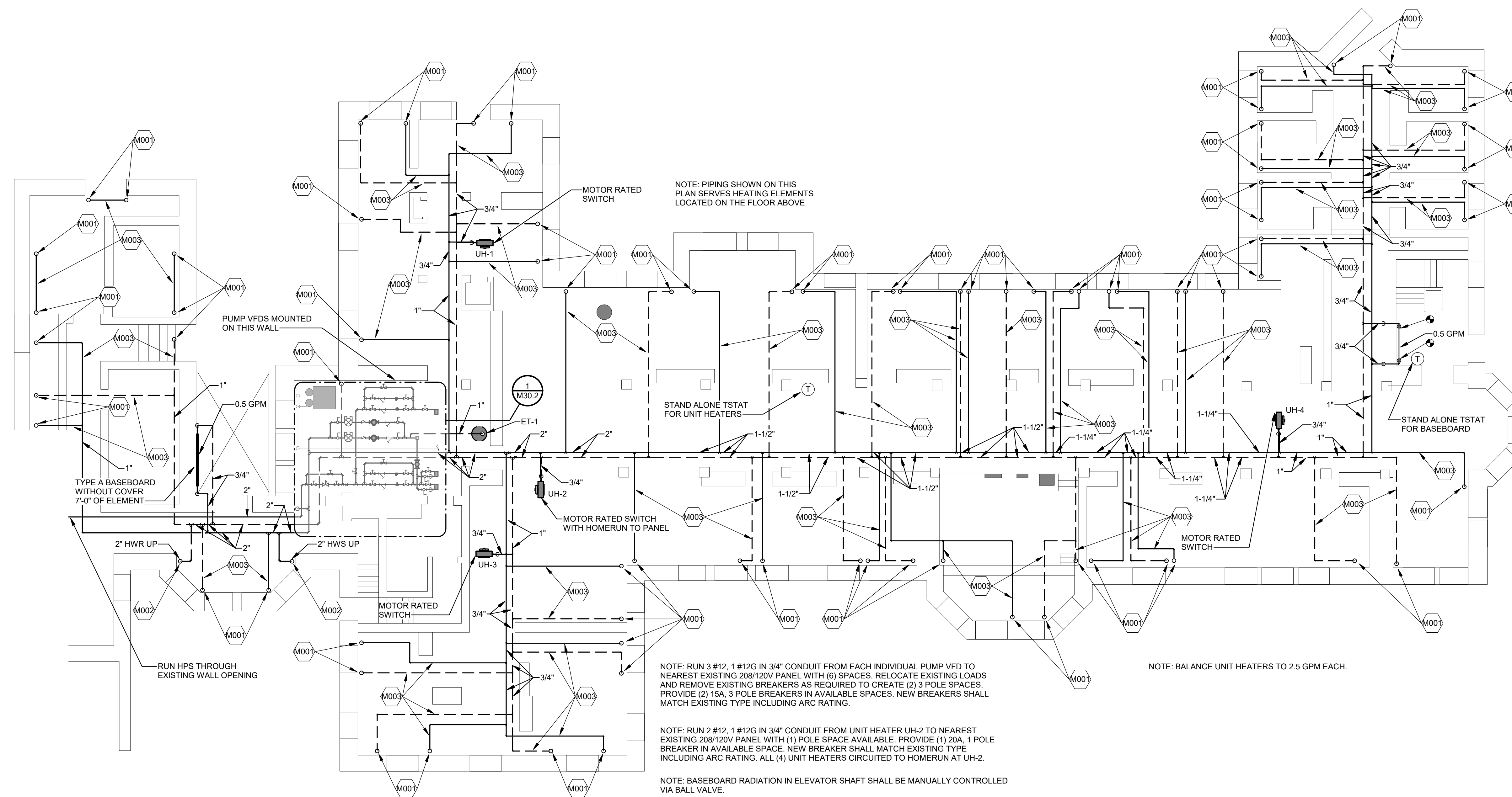


PA / PE: DWS © 2019 Harriman Associates  
Drawn By: JSL

BASEMENT F-BUILDING PIPING

M20.2

KEY NOTES	
CODE	DESCRIPTION
M001	PIPING UP THROUGH FLOOR TO HEATING ELEMENT ON FLOOR ABOVE.
M002	PIPING RISER THROUGH FLOOR AS PART OF NEW HOT WATER HEATING SYSTEM.
M003	PIPING SHALL BE EQUAL TO WIRSBO HEPEX BY UPONOR. PIPING SHALL BE 3/4" PRE-INSULATED WITH 1-1/2" INSULATION.

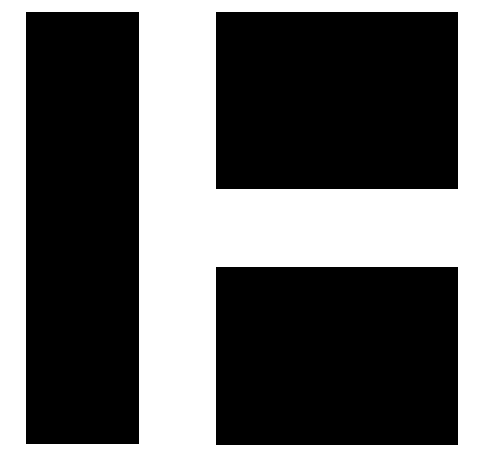


BASEMENT F

1 BASEMENT F-BUILDING PIPING PLAN  
SCALE: 1/8" = 1'-0"



KEY NOTES	
CODE	DESCRIPTION
M001	PIPING UP THROUGH FLOOR TO HEATING ELEMENT ON FLOOR ABOVE.
M002	PIPING RISER THROUGH FLOOR AS PART OF NEW HOT WATER HEATING SYSTEM.
M003	PIPING SHALL BE EQUAL TO WIRSBO HEPEX BY UPONOR. PIPING SHALL BE 3/4" PRE-INSULATED WITH 1-1/2" INSULATION.



HARRIMAN

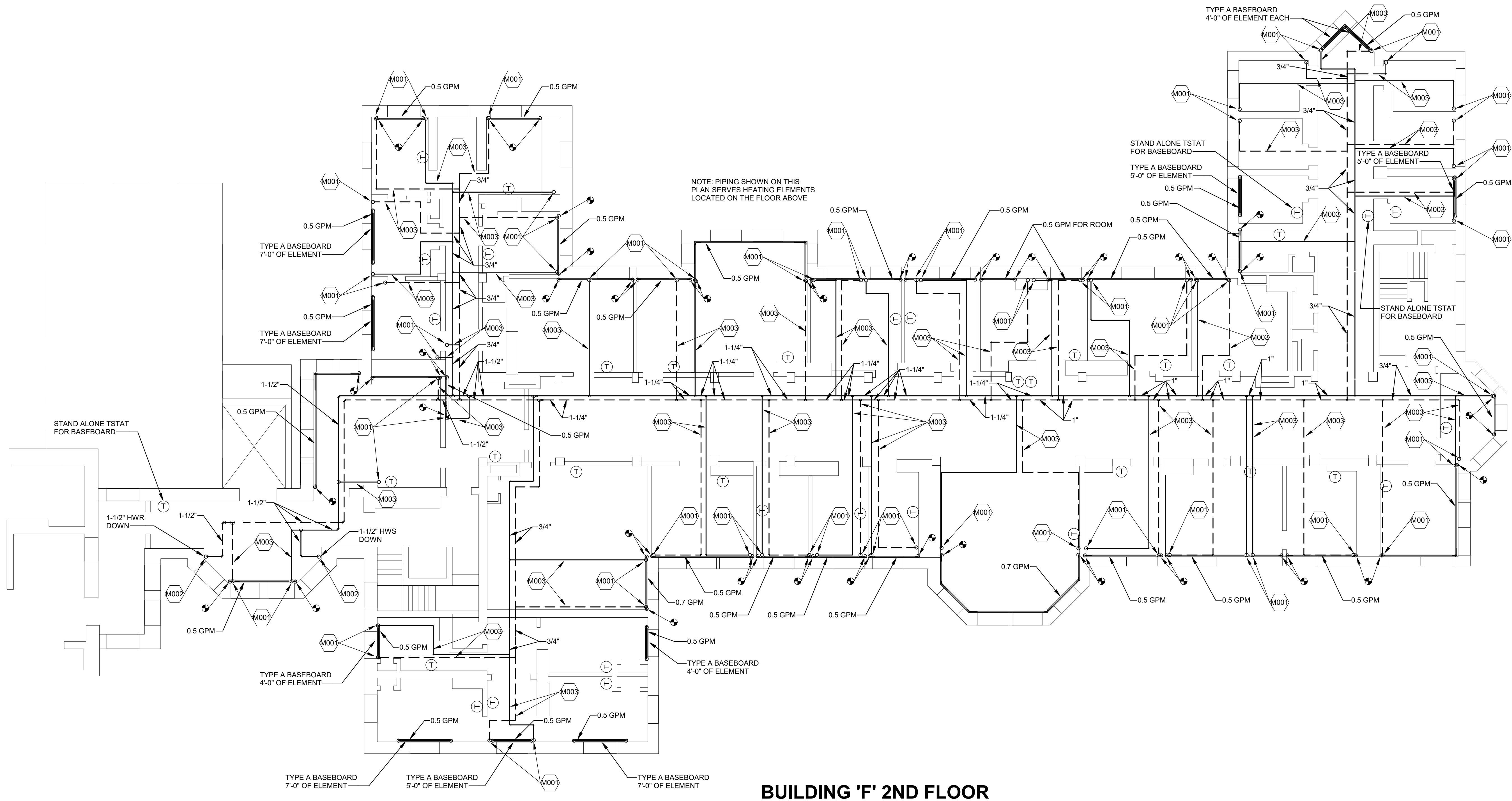
AUBURN BOSTON PORTLAND PORTSMOUTH

DOROTHEA DIX  
PSYCHIATRIC  
CENTER  
F-BUILDING HYDRONIC  
SYSTEM CONVERSION

BANGOR, MAINE

Harriman Project No. 18660

Key Plan Proj North



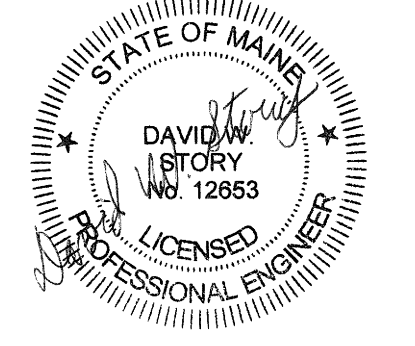
**BUILDING 'F' 2ND FLOOR**

**1 SECOND FLOOR F-BUILDING PIPING PLAN**  
SCALE: 1/8" = 1'-0"

**CONSTRUCTION DOCUMENTS**

APRIL 25, 2019

Rev Date	Revision Description

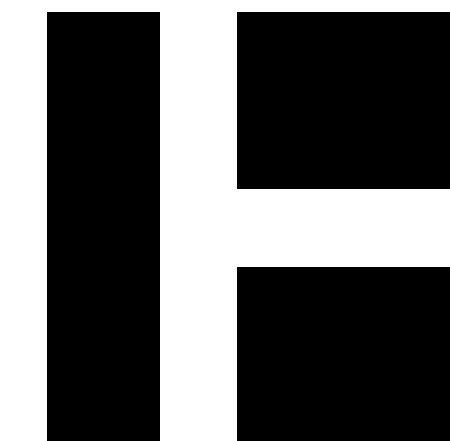


PA / PE: DWS © 2019  
 Drawn By: JSL Harriman Associates

**SECOND FLOOR  
F-BUILDING PIPING**

**M20.4**

Plot Date: 5/6/2019 8:19:23 PM



HARRIMAN

AUBURN BOSTON PORTLAND PORTSMOUTH

DOROTHEA DIX PSYCHIATRIC CENTER F-BUILDING HYDRONIC SYSTEM CONVERSION

BANGOR, MAINE

Harriman Project No. 18660

Key Plan Proj North

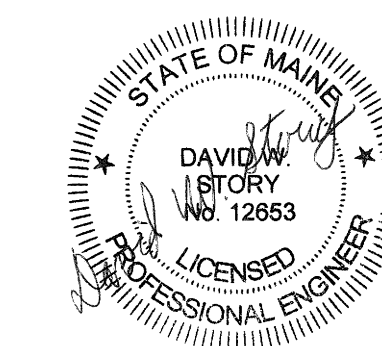


CONSTRUCTION DOCUMENTS

APRIL 25, 2019

Rev Date Revision Description

Rev Date	Revision Description

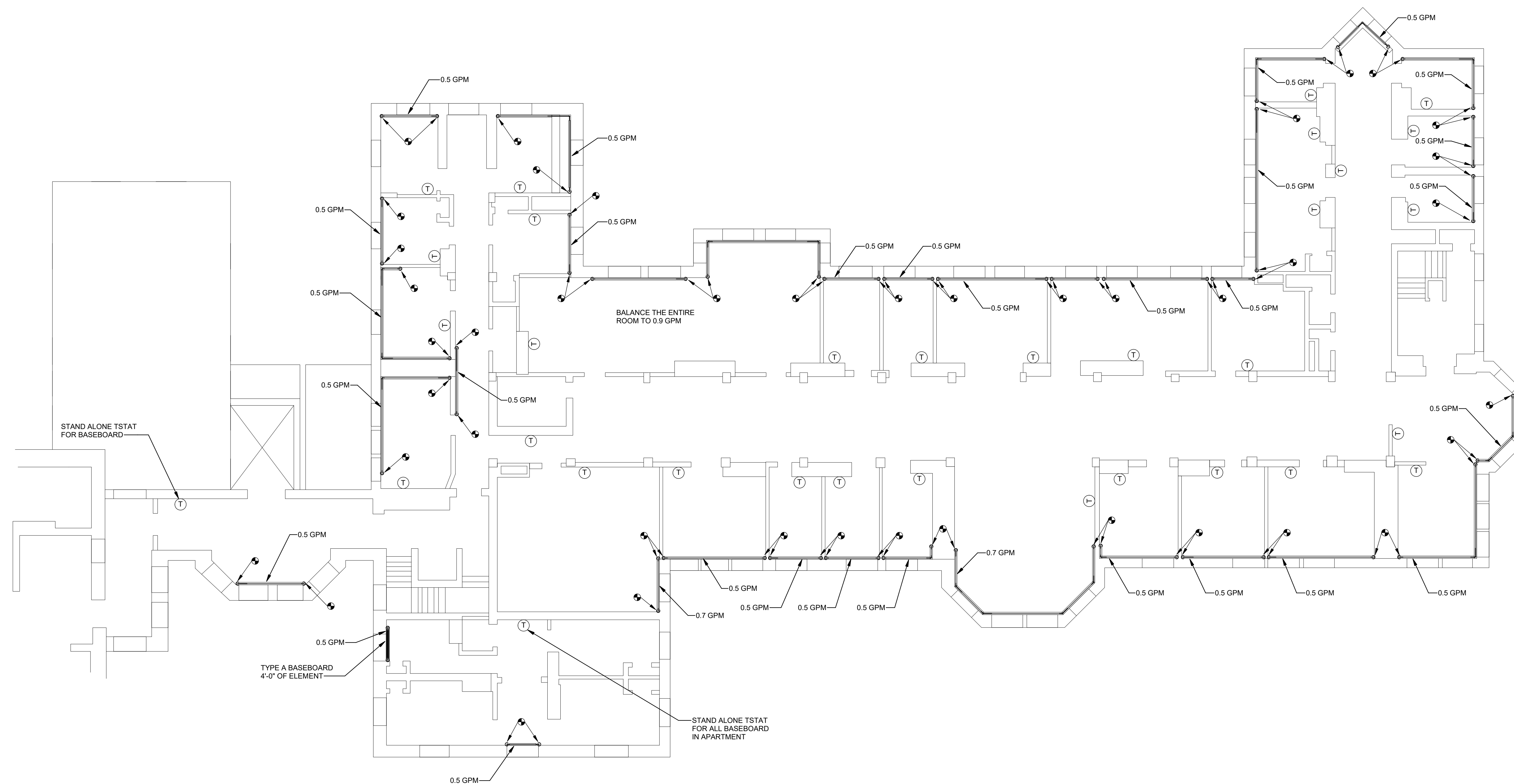


PA / PE: DWS © 2019 Harriman Associates  
Drawn By: JSL

THIRD FLOOR F-BUILDING PIPING

M20.5

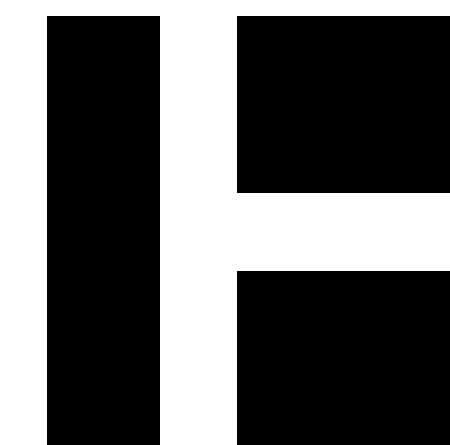
KEY NOTES	
CODE	DESCRIPTION
M001	PIPING UP THROUGH FLOOR TO HEATING ELEMENT ON FLOOR ABOVE.
M002	PIPING RISER THROUGH FLOOR AS PART OF NEW HOT WATER HEATING SYSTEM.
M003	PIPING SHALL BE EQUAL TO WIRSBO HEPEX BY UPONOR. PIPING SHALL BE 3/4" PRE-INSULATED WITH 1-1/2" INSULATION.



BUILDING 'F' 3RD FLOOR

1 THIRD FLOOR F-BUILDING PIPING PLAN  
SCALE: 1/8" = 1'-0"

Plot Date: 5/6/2019 8:19:39 PM



HARRIMAN

AUBURN BOSTON PORTLAND PORTSMOUTH

DOROTHEA DIX PSYCHIATRIC CENTER F-BUILDING HYDRONIC SYSTEM CONVERSION

BANGOR, MAINE

Harriman Project No. 18660

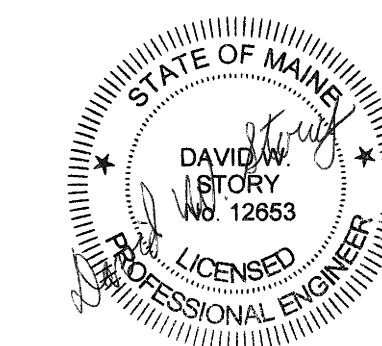
Key Plan Proj North



CONSTRUCTION DOCUMENTS

APRIL 25, 2019

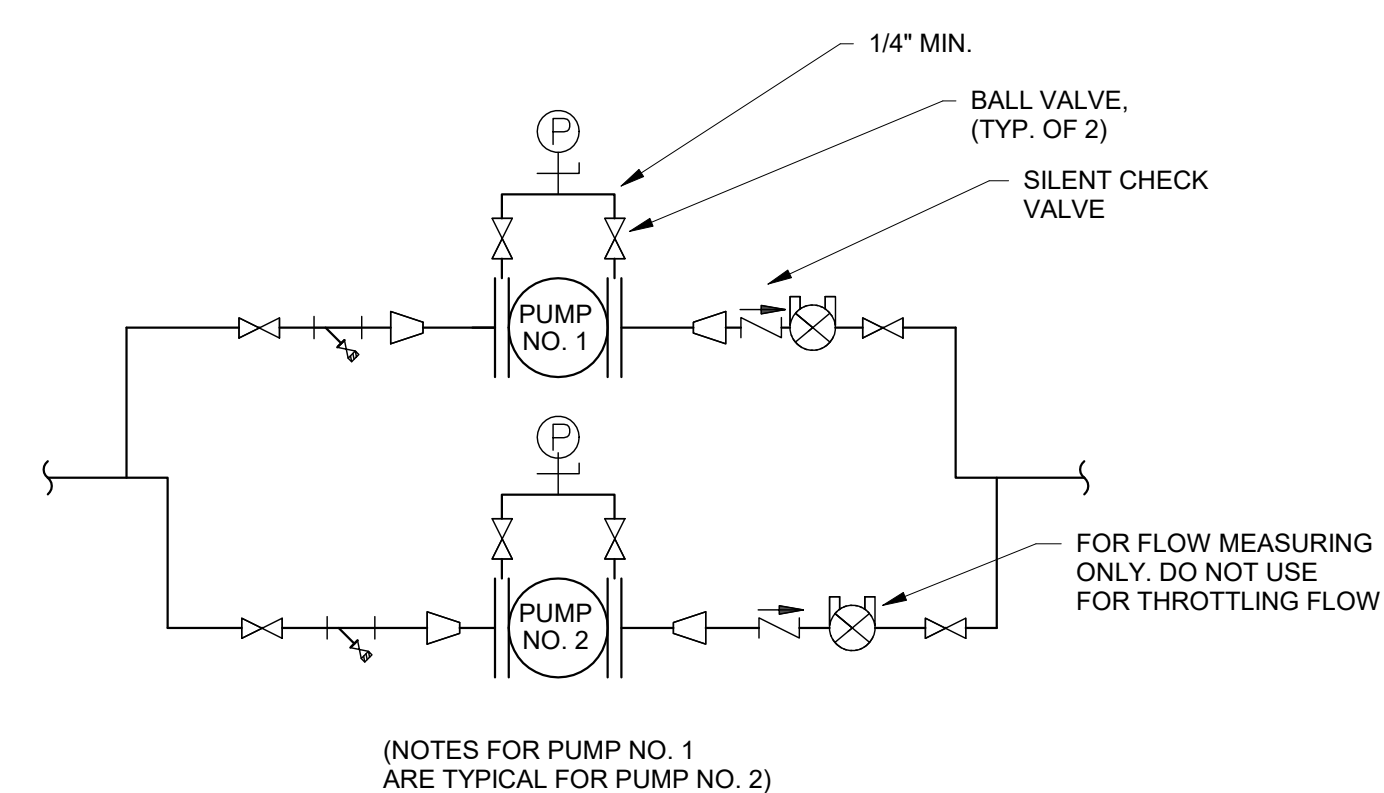
Rev	Date	Revision Description



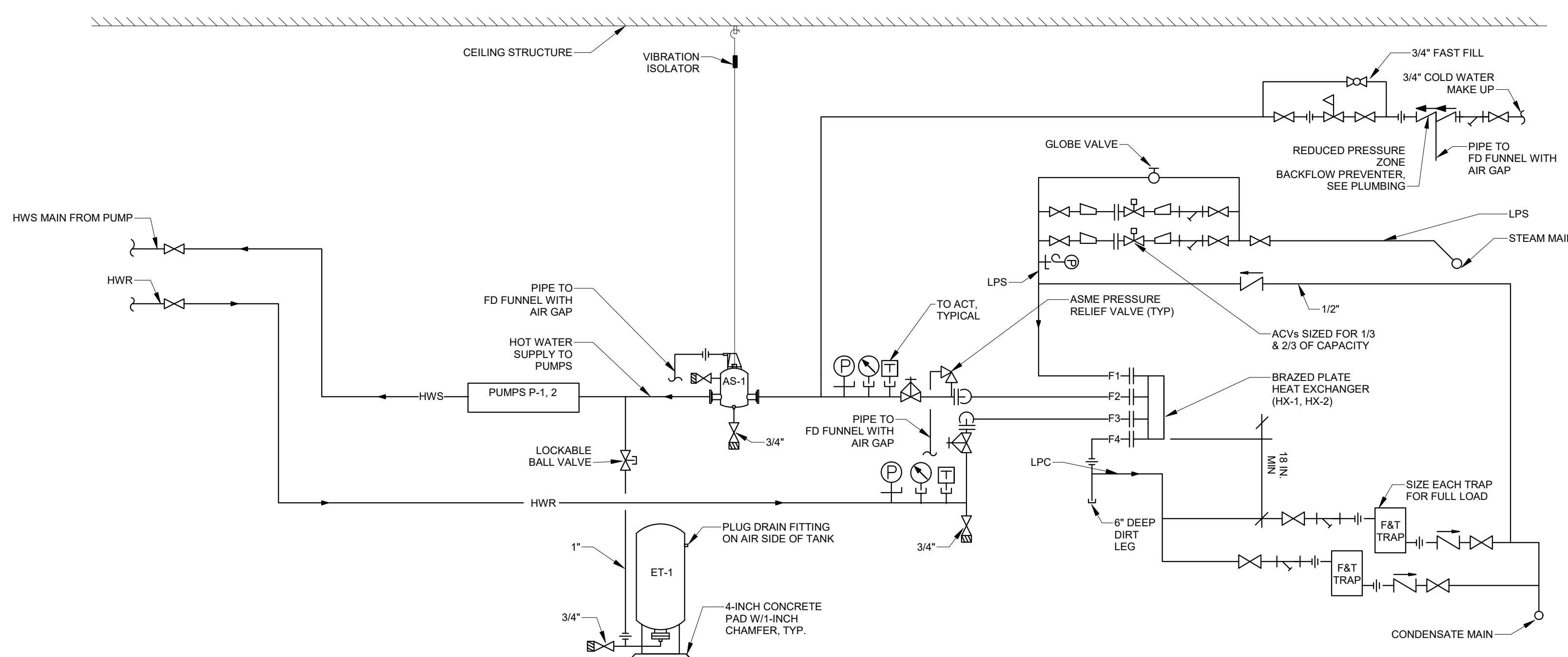
PA / PE: DWS © 2019 Harriman Associates  
Drawn By: JSL

DETAILS

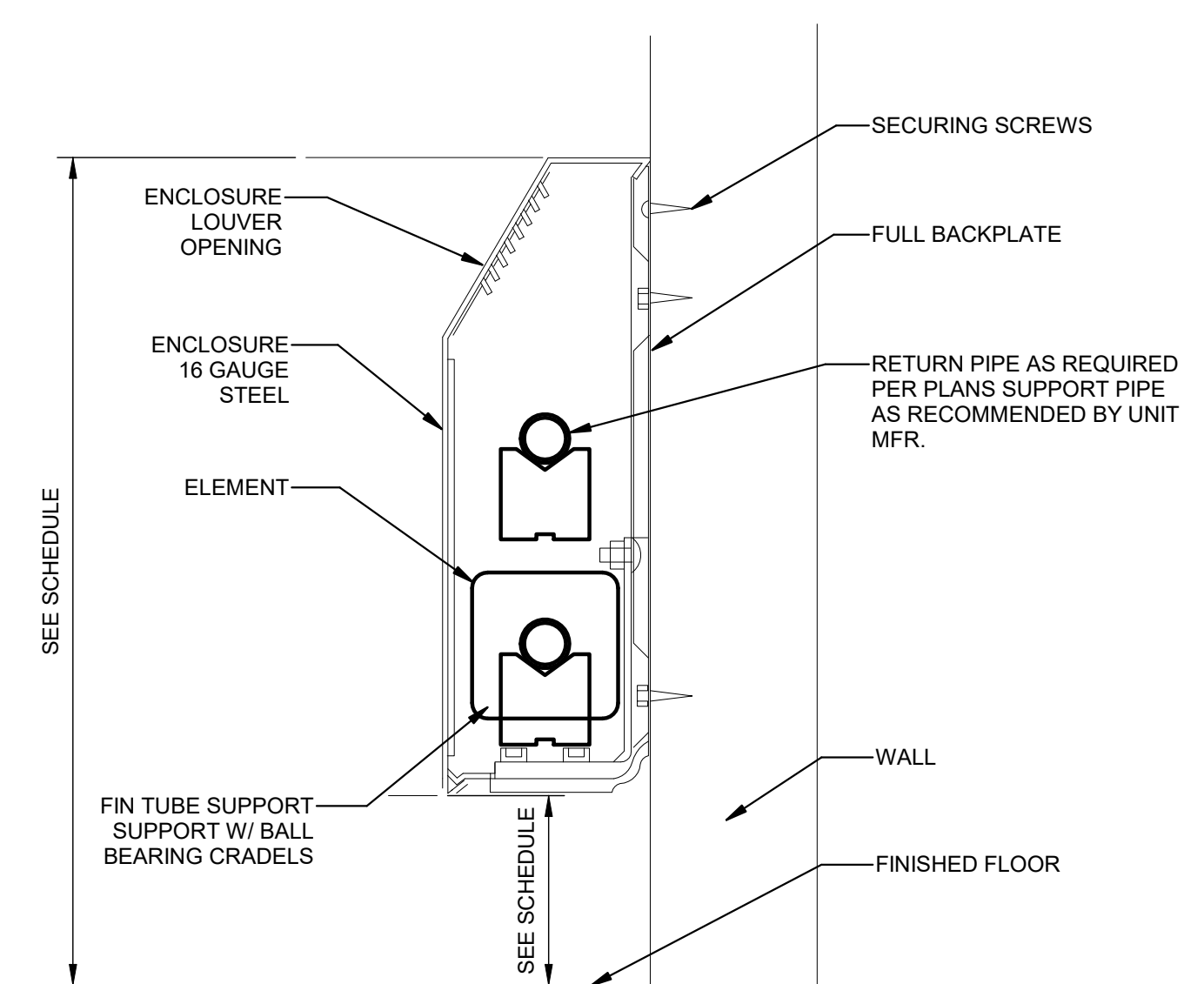
M30.1



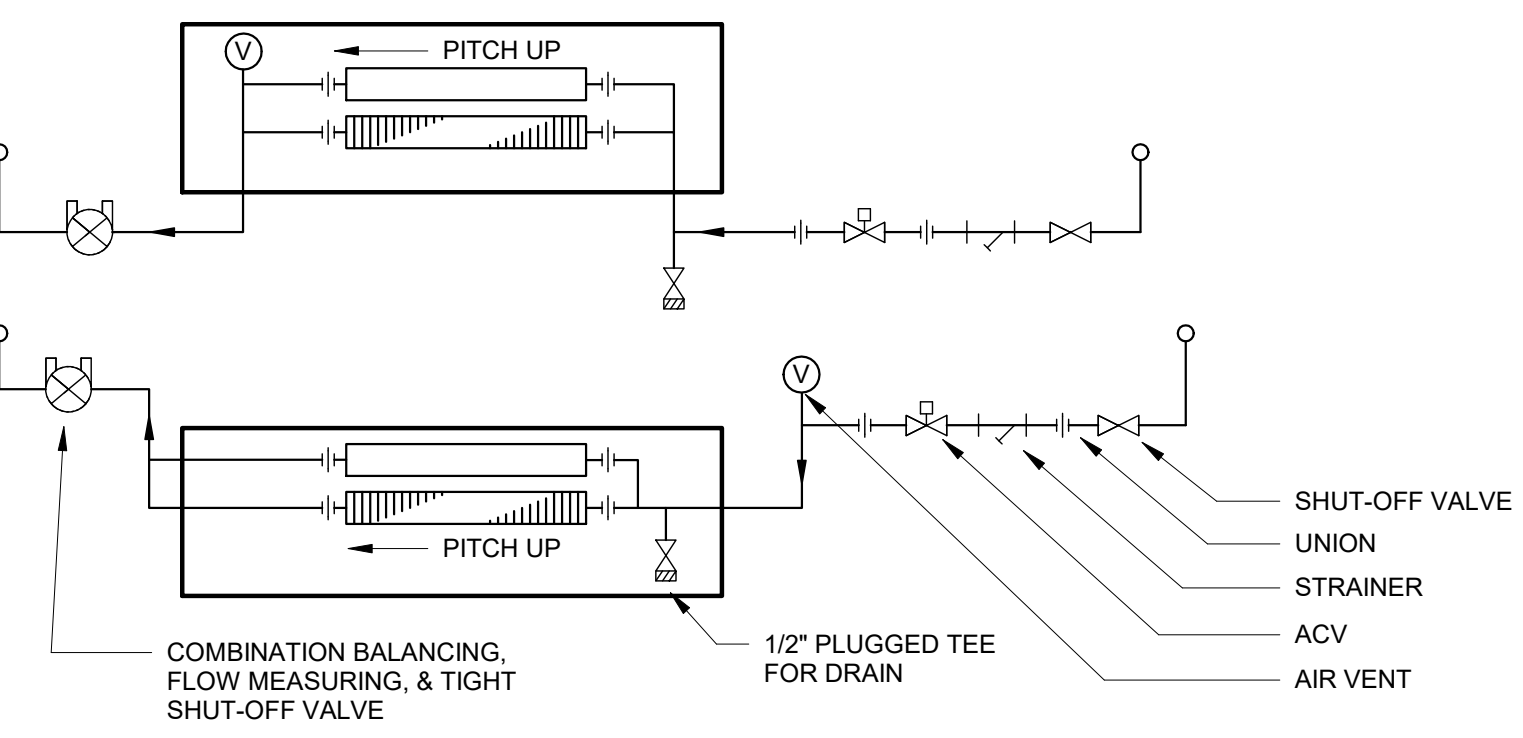
4 IN LINE PARALLEL PUMP  
NO SCALE



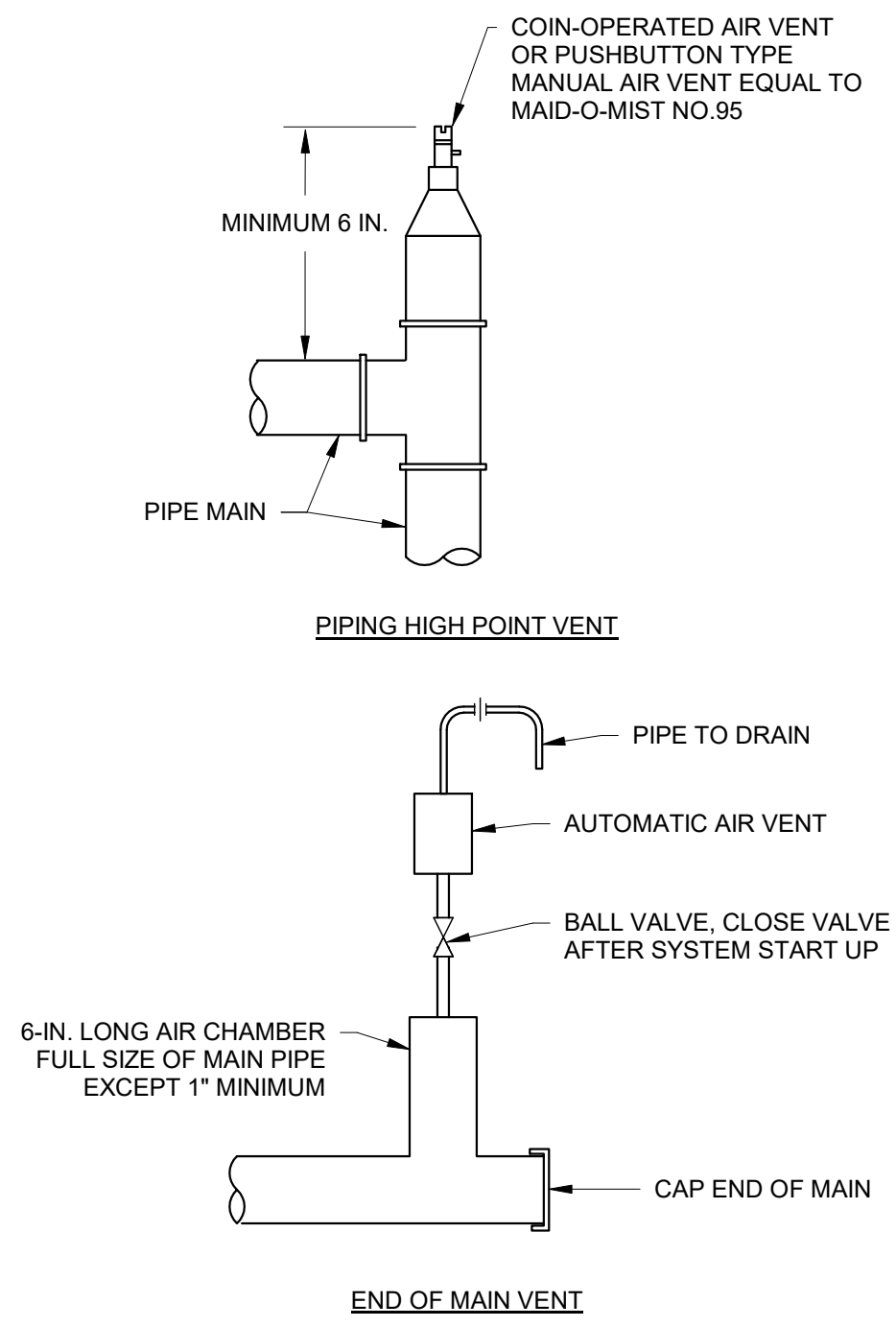
5 STEAM TO HOT WATER CONVERSION DETAIL  
NO SCALE



1 FIN TUBE RADIATION WALL MOUNTED  
NO SCALE

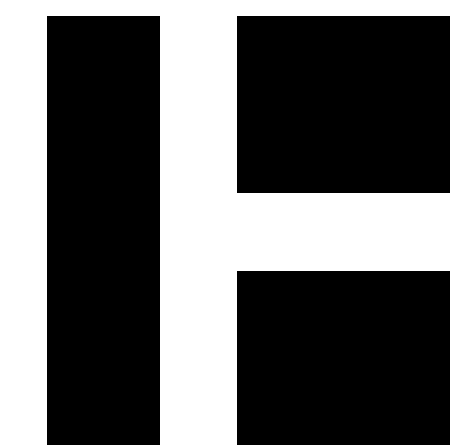


2 HOT WATER RADIATION  
SCALE: 1/8\"/>



3 AUTOMATIC AND MANUAL AIR VENT  
NO SCALE

Plot Date: 5/6/2019 8:19:55 PM



HARRIMAN

AUBURN BOSTON PORTLAND PORTSMOUTH

DOROTHEA DIX PSYCHIATRIC CENTER F-BUILDING HYDRONIC SYSTEM CONVERSION

BANGOR, MAINE

Harriman Project No. 18660

Key Plan Proj North

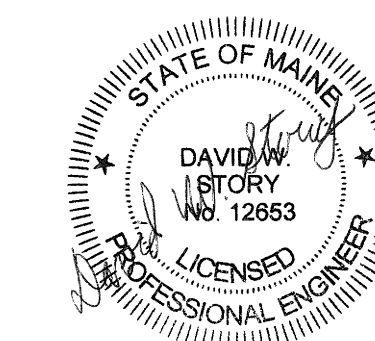


CONSTRUCTION DOCUMENTS

APRIL 25, 2019

Rev Date Revision Description

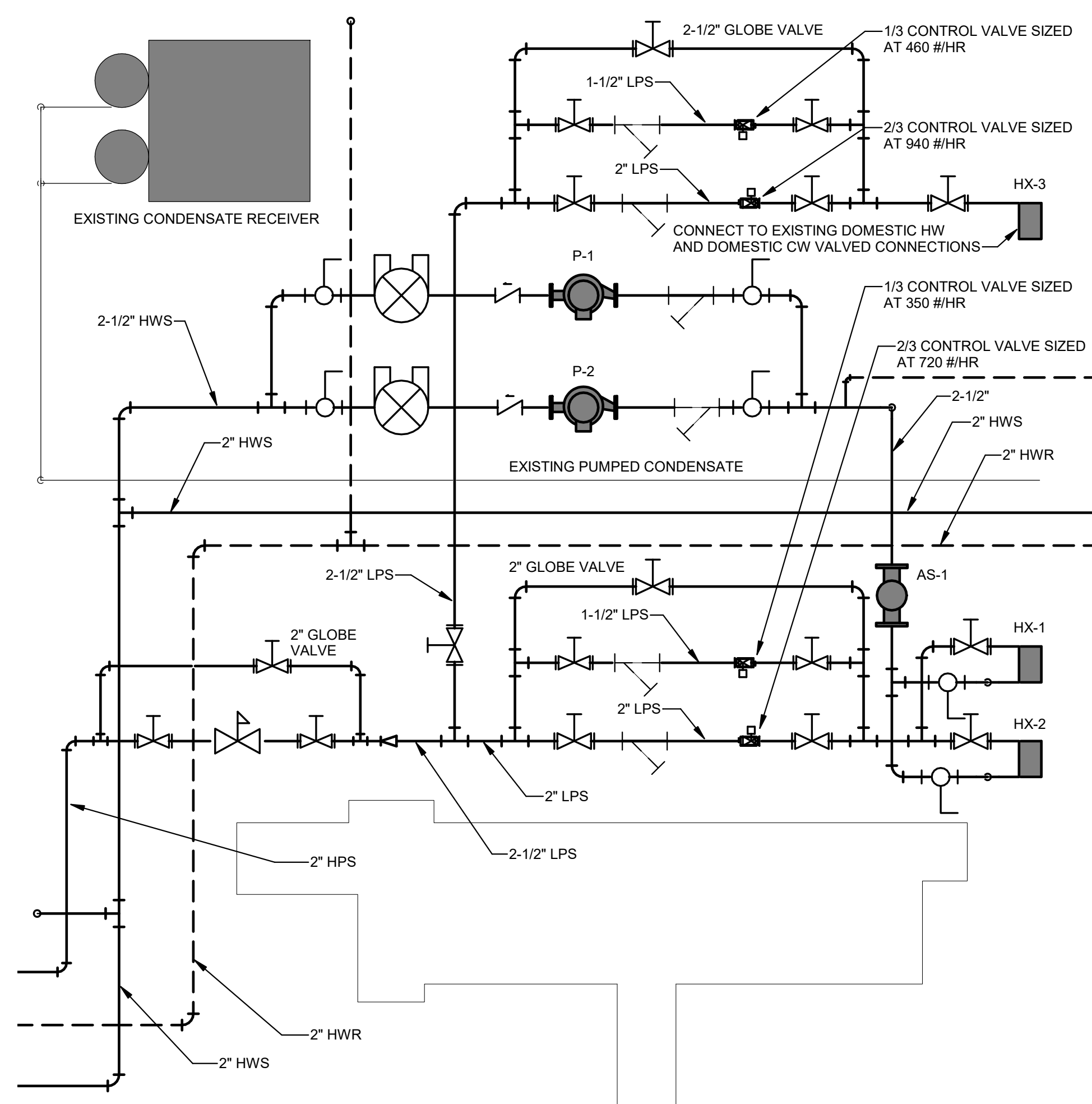
Rev Date	Revision Description



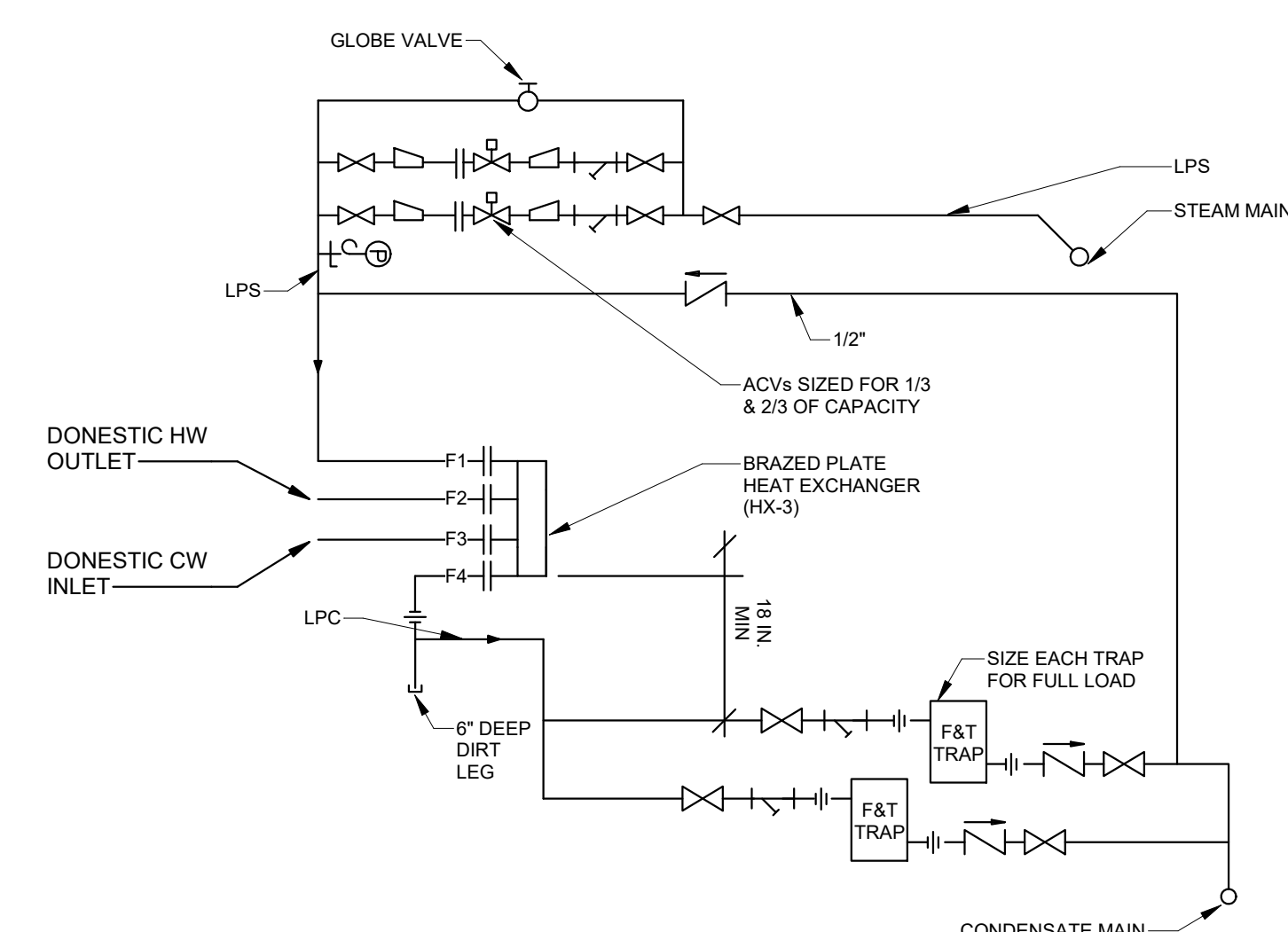
PA / PE: DWS © 2019 Harriman Associates  
Drawn By: JSL

DETAILS

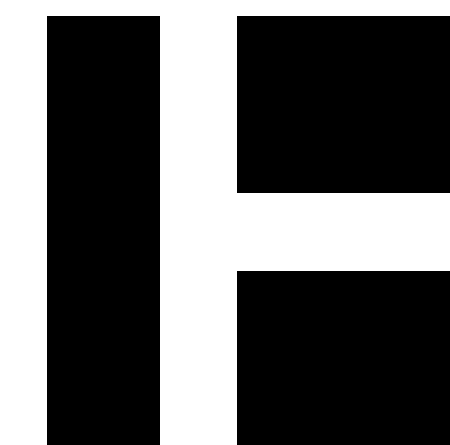
M30.2



1 BASEMENT F-BUILDING PIPING PLAN - Callout 1  
SCALE: 1/2" = 1'-0"



2 DOMESTIC STEAM TO HOT WATER CONVERSION DETAIL  
NO SCALE



HARRIMAN

AUBURN BOSTON PORTLAND PORTSMOUTH

DOROTHEA DIX PSYCHIATRIC CENTER F-BUILDING HYDRONIC SYSTEM CONVERSION

BANGOR, MAINE

Harriman Project No. 18660

Key Plan Proj North



CONSTRUCTION DOCUMENTS

APRIL 25, 2019

Rev Date Revision Description

Table with 2 columns: Rev Date, Revision Description. Multiple empty rows for revisions.

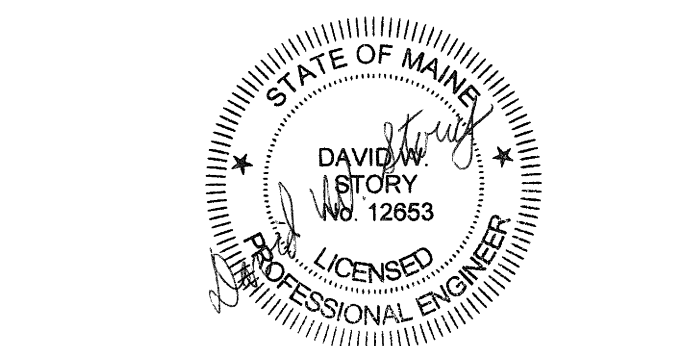


Table with 2 columns: PA/PE, Drawn By. PA/PE: DWS, Drawn By: JSL.

© 2019 Harriman Associates

SCHEDULES

M40.1

UNIT HEATER SCHEDULE

Table with columns: TAG, MANUFACTURER, MODEL, SERVICE, OUTPUT (MBH), AIR FLOW (CFM), EWT (DEG.F), WPD (IN.WG), ELECTRIC (HP, PHASE, VOLTS), MOUNTING TYPE, NOTES. Rows UH-1 to UH-4.

PUMP SCHEDULE

Table with columns: TAG, MANUFACTURER, MODEL, SERVICE, FLOW (GPM), HEAD (FT.WG), SUCTION FLANGE (IN), SPEED (RPM), ELECTRIC (HP, PHASE, VOLTS), MOTOR CONTROL, NOTES. Rows P-1, P-2.

HEAT EXCHANGER SCHEDULE

Table with columns: TAG, MANUFACTURER, MODEL, SERVICE, CAPACITY (MBTUH), LOAD SIDE (EWT, LWT, FLOW, PD), FLUID TYPE, SOURCE SIDE (ENTERING, LBS/HR), NOTES. Rows HX-1, HX-2, HX-3.

EXPANSION TANK SCHEDULE

Table with columns: TAG, MANUFACTURER, MODEL, SERVICE, VOLUME (GAL.), MIN TEMP. (DEG. F), MAX TEMP. (DEG. F), DIAMETER (IN), HEIGHT (IN), WEIGHT (LBS), NOTES. Row ET-1.

FINTUBE RADIATION SCHEDULE

Table with columns: TAG, MANUFACTURER, MODEL, PIPE SIZE (IN.), CAPACITY (BTU/FT), FIN DIMENSION S WxH (IN), FPF, ROWS, ENCLOSURE DIMENSIONS W x H (IN.), NOTES. Row A.

AIR SEPARATOR SCHEDULE

Table with columns: TAG, MANUFACTURER, MODEL, SERVICE, PIPE SIZE, FLOW (GPM), WPD (FT WG), DIAMETER (IN), HEIGHT (IN), NOTES. Row AS-1.