

# LONG CREEK YOUTH DEVELOPMENT CENTER FENCE REPLACEMENT

South Portland, Maine

LONG CREEK YOUTH  
DEVELOPMENT CENTER  
FENCE REPLACEMENT



SMRT, Inc.  
75 Washington Ave., Suite 3A  
Portland, Maine 04101  
1.877.700.7678  
www.smrtinc.com

All reproduction & intellectual property rights reserved  
© 2024 SMRT INC.  
In Association With

ABBREVIATIONS				GENERAL NOTES		ARCHITECTURAL SYMBOLS		LOCATION MAPS		DRAWING LIST	
ABBREV	DESCRIPTION	ABBREV	DESCRIPTION	ABBREV	DESCRIPTION					SHEET NUMBER	SHEET NAME
AC	AIR CONDITIONING	FPE	FINISH FLOOR ELEVATION	PT	PRESSURE TREATED	<div>1. FIELD VERIFY ALL DIMENSIONS AND LAYOUT PRIOR TO PROCEEDING WITH WORK. NOTIFY ARCHITECT IN WRITING OF ANY DISCREPANCIES OR INCONSISTENCIES. FAILURE TO REPORT ANY DISCREPANCIES WITHIN THESE CONSTRUCTION DOCUMENTS TO THE ARCHITECT WILL NOT BE GROUNDS FOR ADDITIONAL COST OR CHANGE ORDERS.</div> <div>2. CONTRACTOR SHALL BE RESPONSIBLE FOR PROVIDING ALL MATERIALS (UNLESS NOTED OTHERWISE), AND WORKMANSHIP IN ACCORDANCE WITH FEDERAL, STATE, CITY, AND LOCAL BUILDING CODES AND THEIR REQUIREMENTS.</div> <div>3. CONTRACTOR AND ALL TRADES SHALL NOTE REQUIREMENTS OF "GENERAL NOTES" ON ALL SHEETS.</div> <div>4. REFER TO ALL CONSTRUCTION DOCUMENTS FOR REQUIREMENTS WHICH MAY AFFECT THE WORK IN ANOTHER AREA AND/OR DISCIPLINE AND COORDINATE.</div> <div>5. DO NOT SCALE CONSTRUCTION DOCUMENTS.</div> <div>6. PROVIDE MEANS FURNISH AND INSTALL.</div> <div>7. INSTALLATION OF SUCH ITEMS SHALL BE COORDINATED WITH EACH RESPECTIVE TRADE SUB-CONTRACTOR.</div> <div>8. WHERE THE DRAWINGS DO NOT ADDRESS INSTALLATION METHODOLOGY, THE CONTRACTOR SHALL BE BOUND TO PERFORM IN STRICT COMPLIANCE WITH CODES, THE MANUFACTURER'S SPECIFICATIONS AND INDUSTRY STANDARDS.</div> <div>9. PRODUCTS NOTED IN DRAWINGS WITH A SPECIFIC MANUFACTURER'S NAME OR PRODUCT NAME ARE INTENDED TO IDENTIFY THE TYPE OF PRODUCT REQUIRED. REFER TO SPECIFICATIONS FOR SPECIFIC PRODUCT REQUIREMENTS AND FOR MANUFACTURER OR SUBSTITUTION OPTIONS.</div>				01. GENERAL	COVER SHEET
AB	ANCHOR BOLT	FN	FIRE HYDRANT	QTY	QUANTITY					02. CIVIL	SITE PHASING PLAN
ABV	ABOVE	FLR	FLOOR	R	RISER / RADIUS					C-001	FENCE DEMOLITION SITE PLAN & DETAILS
ACCU	AIR CONDITIONING CONDENSER UNIT	FP	FIRE PROTECTION, FILLER PANEL	RD	ROOF DRAIN					CD101	FENCE SITE PLAN & DETAILS
ACT	ACOUSTICAL CEILING TILE	FRP	FIRE RETARDANT TREATED (MENT)	REF	REFERENCE					CE101	PHOTOS
AFF	ADJACENT	FS	FLOOR SINK / FEAR SIDE	REINF	REINFORCED					C-501	
AGG	AGGREGATE	FT	FEET, FOOT, FULL TIME	REQ'D	REQUIRED						
AHU	AIR HANDLING UNIT	FTG	FOOTING	RESIL	RESILIENT						
ALT	ALTERNATE	GA	GAUGE	RM	ROOM						
ALUM	ALUMINUM	GALV	GALVANIZED	RO	ROUGH OPENING						
AND	AND/OR	GB	GRAB BAR	ROW	RIGHT OF WAY						
AP	ACCESS PANEL	GC	GENERAL CONTRACTOR	RTU	ROOF TOP UNIT (HVAC)						
APPROX	APPROXIMATE	GV	GRAVITY VENT	SF	SQUARE FOOT/FEET / SUPPLY FAN						
ARCH	ARCHITECTURE (URE,URAL)	GWB	GYPSPUM WALL BOARD	SHT	SHEET						
AVG	AVERAGE	HC	HANDICAPP / HOLLOW CORE	SIM	SIMILAR						
BD	BOARD	HM	HOLLOW METAL	SLD	SEALED						
BIT	BITUMINOUS	HORIZ	HORIZONTAL	SOG	SLAB ON GRADE						
BLDG	BUILDING	HRU	HEAT RECOVERY UNIT	SP	SPECIAL / SLUMP PUMP						
BLKG	BLOCKING	HTR	HEATER	SPEC	SPECIFICATION						
BLKHD	BULKHEAD	HVAC	HEATING, VENTILATION, AIR CONDITIONING	SQ	SQUARE						
BO	BOTTOM OF	I.E	THAT IS	SS	STAINLESS STEEL						
BOD	BASIS OF DESIGN	ID	INSIDE DIAMETER	STD	STANDARD						
BOF	BOTTOM OF FOOTING	IJ	ISOLATION JOINT	STL	STEEL						
BOS	BOTTOM OF STEEL	IMP	IMPACT RESISTANT / INSULATED METAL PANEL	STOR	STORAGE						
BOT	BOTTOM	INS	INSULATED	SUSP	SUSPENDED						
BRG	BEARING	INT	INTERIOR	SYS	SYSTEM						
C	CHANNEL	INV	INVERT(ED)	TAB	TREAD						
CAB	CABINET	JB	JUNCTION BOX	T&B	TOP & BOTTOM						
CEM BD	CEMENTITIOUS BACKER BOARD	JC	JANITOR'S CLOSET	T&G	TOUNSE & GROOVE						
CF	CUBIC FOOT	JT	JOINT(S)	TEL	TELEPHONE						
CFM	CUBIC FOOT PER MINUTE	K	KIPS	TEMP	TEMPERATURE						
CFMF	COLD FORMED METAL FRAMING	L	ANGLE / LENGTH	THK	THICK						
CP	CAST IN PLACE	LAM	LAMINATED	TO	TOP OF						
CJ	CONTROL JOINT / CONSTRUCTION JOINT	LAV	LAVATORY	TOC	TOP OF CONCRETE						
CL	CENTER LINE	LGMF	LIGHT GAUGE METAL FRAMING	TOF	TOP OF FRAME / FOOTING						
CLG	CEILING (SEE ALSO MECH ABBREVIATIONS)	LL	LIVE LOAD	TOM	TOP OF MASONRY						
CLR	CLEARANCE	LP	LOW POINT / LIGHTING PANEL	TOP	TOP OF PIER						
CMU	CONCRETE MASONRY UNIT	MAX	MAXIMUM	TOS	TOP OF STEEL						
COL	COLUMN	MDO	MEDIUM DENSITY OVERLAY	TOW	TOP OF WALL						
CONC	CONCRETE	MEDH	MECHANICAL	TV	TELEVISION						
COND	CONDENS(ATE)ER(ING)ATION	MFR	MANUFACTURER	TYP	TYPICAL						
CONF	CONFERENCE	MIN	MINIMUM	UH	UNIT HEATER						
CONST	CONSTRUCTION	MISC	MISCELLANEOUS	UNFIN	UNFINISHED						
CONT	CONTINU(OUS)ATION	MO	MASONRY OPENING	UNO	UNLESS NOTED OTHERWISE						
COORD	COORDINATE	MR	MOISTURE-RESISTANT	UPS	UNINTERRUPTABLE POWER SUPPLY						
CUH	CABINET UNIT HEATER	MTD	MOUNTED	UTIL	UTILITY						
CY	CUBIC YARD	MTL	METAL	VAR	VARIABLE						
D	DIAMETER	MUA	MAKE-UP AIR	VB	VAPOR BARRIER / VINYL BASE						
DBL	DOUBLE	N	NOBING	VERT	VERTICAL						
DL	DEAD LOAD	NIC	NOT IN CONTRACT	VEST	VESTIBULE						
DS	DOWNSPOUT	NO	NUMBER	VIF	VERIFY IN FIELD						
DTL	DETAIL	NOM	NOMINAL	VIN	VINYL						
DW	DISHWASHER	NTS	NOT TO SCALE	VTR	VENT THROUGH ROOF						
DWG	DRAWING(S)	OA	OVERALL	W	WIDE WIDTH, WATER						
EACH	EACH	OC	ON CENTER	W/O	WITHOUT						
EF	EXHAUST FAN / EACH FACE	OD	OUTSIDE DIAMETER	WC	WATER CLOSET						
EJ	EXPANSION JOINT	OF	OUTSIDE FACE	WD	WOOD						
EL	ELEVATION	OFCI	OWNER FURNISHED CONTRACTOR INSTALLED	WP	WATERPROOF / WORKING POINT						
ELEC	ELECTRICAL	OFOI	OWNER FURNISHED OWNER INSTALLED	WT	WEIGHT						
EMER	EMERGENCY	OH	OVERHEAD								
ENCL	ENCLOSURE(S)	OPG	OPENING								
EOP	EDGE OF PAVEMENT	OPP	OPPOSITE								
EOS	EDGE OF SLAB	OZ	OUNCE								
EP	ELECTRICAL PANEL	PA	PUBLIC ADDRESS								
EPX	EPOXY	PB	PULL BOX								
EQ	EQUAL	PL	PLATE / PROPERTY LINE								
EQUIP	EQUIPMENT	PLAS	PLASTER								
ETR	EXISTING TO REMAIN	PLF	POUNDS PER LINEAR FOOT								
EWG	ELECTRIC WATER COOLER	PLMB	PLUMBING								
EXH	EXHAUST	PLYWD	PLYWOOD								
EXIST	EXISTING	PNL	PANEL								
EXP	EXPANSION	PP	POWER PANEL								
EXT	EXTERIOR	PSF	POUNDS PER SQUARE FOOT								
FAI	FRESH AIR INTAKE	PSI	POUNDS PER SQUARE INCH								
FD	FLOOR DRAIN, FIRE DAMPER										
FDN	FOUNDATION										
FDCV	FIRE DEPT. VALVE CABINET										
FE	FIRE EXTINGUISHER										
FEC	FIRE EXTINGUISHER CABINET										
FF	FINISH FLOOR										

**GENERAL NOTES**

1. FIELD VERIFY ALL DIMENSIONS AND LAYOUT PRIOR TO PROCEEDING WITH WORK. NOTIFY ARCHITECT IN WRITING OF ANY DISCREPANCIES OR INCONSISTENCIES. FAILURE TO REPORT ANY DISCREPANCIES WITHIN THESE CONSTRUCTION DOCUMENTS TO THE ARCHITECT WILL NOT BE GROUNDS FOR ADDITIONAL COST OR CHANGE ORDERS.

2. CONTRACTOR SHALL BE RESPONSIBLE FOR PROVIDING ALL MATERIALS (UNLESS NOTED OTHERWISE), AND WORKMANSHIP IN ACCORDANCE WITH FEDERAL, STATE, CITY, AND LOCAL BUILDING CODES AND THEIR REQUIREMENTS.

3. CONTRACTOR AND ALL TRADES SHALL NOTE REQUIREMENTS OF "GENERAL NOTES" ON ALL SHEETS.

4. REFER TO ALL CONSTRUCTION DOCUMENTS FOR REQUIREMENTS WHICH MAY AFFECT THE WORK IN ANOTHER AREA AND/OR DISCIPLINE AND COORDINATE.

5. DO NOT SCALE CONSTRUCTION DOCUMENTS.

6. PROVIDE MEANS FURNISH AND INSTALL.

7. INSTALLATION OF SUCH ITEMS SHALL BE COORDINATED WITH EACH RESPECTIVE TRADE SUB-CONTRACTOR.

8. WHERE THE DRAWINGS DO NOT ADDRESS INSTALLATION METHODOLOGY, THE CONTRACTOR SHALL BE BOUND TO PERFORM IN STRICT COMPLIANCE WITH CODES, THE MANUFACTURER'S SPECIFICATIONS AND INDUSTRY STANDARDS.

9. PRODUCTS NOTED IN DRAWINGS WITH A SPECIFIC MANUFACTURER'S NAME OR PRODUCT NAME ARE INTENDED TO IDENTIFY THE TYPE OF PRODUCT REQUIRED. REFER TO SPECIFICATIONS FOR SPECIFIC PRODUCT REQUIREMENTS AND FOR MANUFACTURER OR SUBSTITUTION OPTIONS.

**ARCHITECTURAL SYMBOLS**

**BUILDING SECTION**

CUT DIRECTION

SECTION NUMBER

SHEET NUMBER

**WALL SECTION**

CUT DIRECTION

SECTION NUMBER

SHEET NUMBER

**DETAIL**

SECTION NUMBER

SHEET NUMBER

AREA OF DETAIL

**EXTERIOR ELEVATION**

ELEVATION DIRECTION

SECTION NUMBER

SHEET NUMBER

**INTERIOR ELEVATION**

ELEVATION NUMBER / DIRECTION

SHEET NUMBER

**DATUM REFERENCE**

**KEY NOTE**

**EQUIPMENT/ACCESSORY TAG**

**WINDOW TAG**

**PARTITION TAG**

**DOOR TAG**

DOOR NUMBER

**ROOM TAG**

ROOM NAME

ROOM NUMBER

ROOM AREA (WHEN APPLICABLE)

**COLUMN BUBBLE AND GRID LINE**

**REVISION**

REVISION NUMBER

REVISION TAG

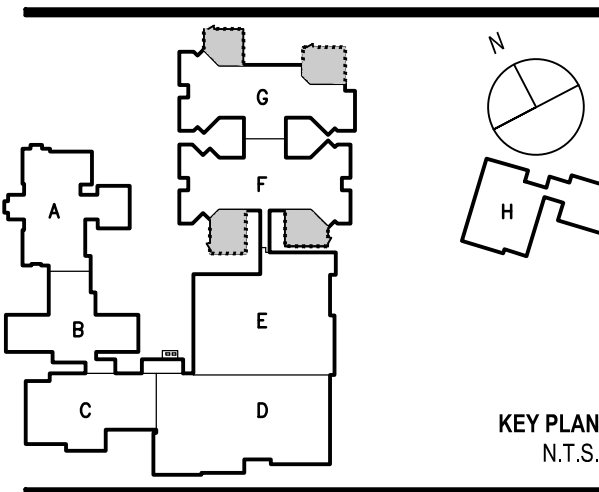
AREA OF REVISION

**LOCATION MAPS**

**PROJECT LOCATION**

**DRAWING LIST**

SHEET NUMBER	SHEET NAME
01. GENERAL	COVER SHEET
G001	
02. CIVIL	SITE PHASING PLAN
C-001	FENCE DEMOLITION SITE PLAN & DETAILS
CD101	FENCE SITE PLAN & DETAILS
CE101	PHOTOS
C-501	



#	Description	Date

ISSUED FOR CONSTRUCTION

08-26-25

SHEET TITLE:

COVER SHEET

SCALE: AS NOTED DESIGNED BY: DJM  
SMRT PROJECT #: 25017 DRAWN BY: DJM

G001

LONG CREEK YOUTH  
DEVELOPMENT CENTER  
FENCE REPLACEMENT



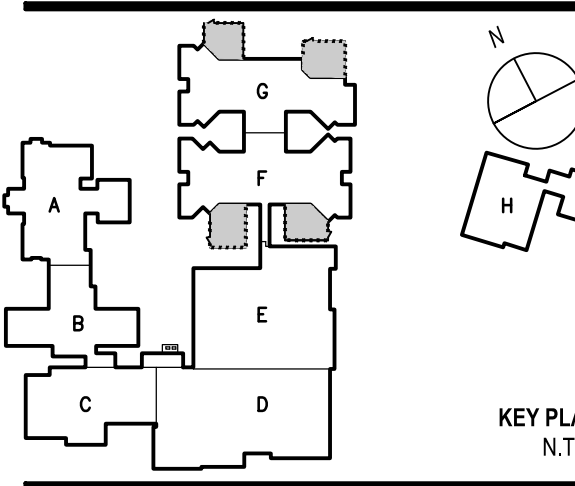
Architecture • Engineering • Planning

SMRT, Inc.  
75 Washington Ave., Suite 3A  
Portland, Maine 04101  
1.877.700.7678  
www.smrtinc.com

All reproduction & intellectual property rights reserved  
© 2024 SMRT INC.  
In Association With

PHASING NOTES:

1. THE OWNER WILL MAINTAIN CONTINUOUS OPERATIONS THROUGHOUT THE FACILITY DURING THE ENTIRE CONSTRUCTION PERIOD. THE CONTRACTOR SHALL COORDINATE THE ORDER OF 4 PHASES SHOWN WITH THE OWNER, AND REVISE THE ORDER IF NECESSARY TO MAINTAIN THE FACILITIES SECURITY AND/OR OPERATIONAL NEEDS.




#	Description	Date
---	-------------	------

ISSUED FOR CONSTRUCTION

08-26-25

SHEET TITLE:  
SITE PHASING PLAN

Original drawing is 30" x 42". Do not scale contents of this drawing.  
SCALE: AS NOTED | DESIGNED BY: DJM  
SMRT PROJECT #: 25017 | DRAWN BY: DJM

C-001



All reproduction & intellectual property rights reserved  
© 2024 SMRT INC.  
In Association With

- 1 REMOVE EXISTING 6'-0" H FENCE ASSEMBLY AND FENCE FOUNDATION IN ITS ENTIRETY.
- 2 REMOVE EXISTING 12'-0" H FENCE ASSEMBLY AND FENCE FOUNDATION IN ITS ENTIRETY.

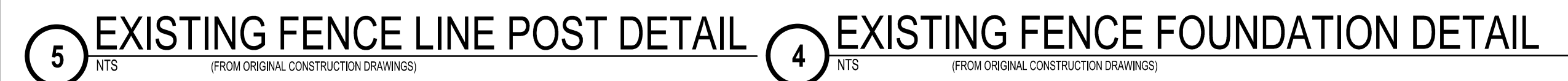


**ISSUED FOR CONSTRUCTION**

Original drawing is 30" x 42" - Do not scale contents of this drawing.

SCALE:	AS NOTED	DESIGNED BY:	DJM
SMRT PROJECT #:	25017	DRAWN BY:	DJM

# CD101



LONG CREEK YOUTH  
DEVELOPMENT CENTER  
FENCE REPLACEMENT



Architecture • Engineering • Planning

SMRT, Inc.  
75 Washington Ave., Suite 3A  
Portland, Maine 04101  
1.877.700.7678  
www.smrtinc.com

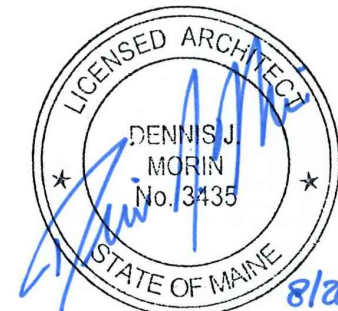
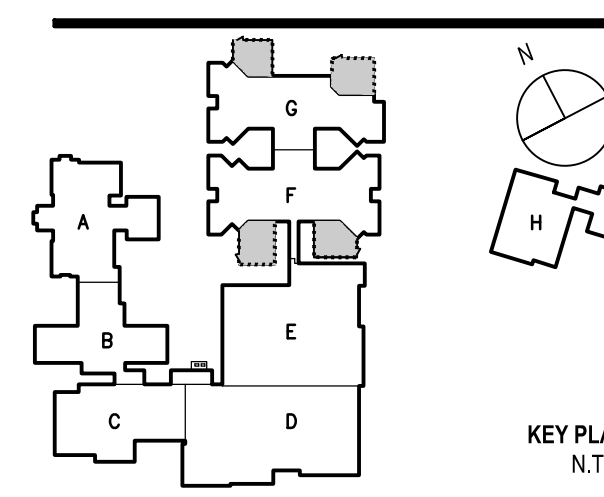
All reproduction & intellectual property rights reserved  
© 2024 SMRT INC.  
In Association With

KEY NOTES:

- ① PROVIDE 12'-0" HIGH WELDED WIRE FENCE, RE-  
DETAILS 2 & 3/CE101.

FENCE NOTES:

1. THE EXISTING FENCE SLOPES AT VARIOUS  
LOCATIONS. THE NEW FENCE SLOPES ARE ARE  
TO MATCH EXISTING SLOPES, MAINTAINING ALL  
FENCE DIMENSION SHOWN IN FENCE DETAILS



#	Description	Date

# Description Date

ISSUED FOR CONSTRUCTION

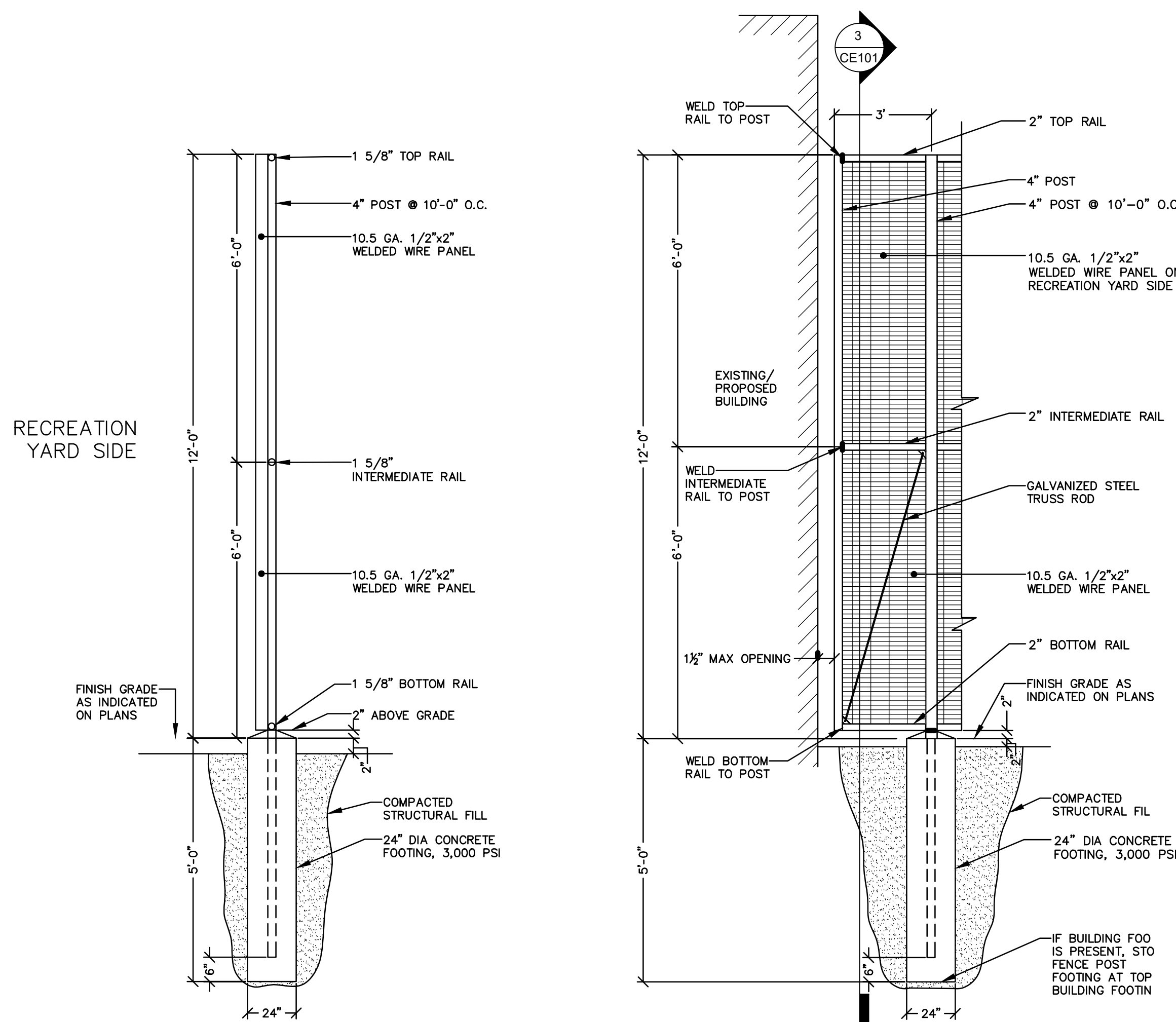
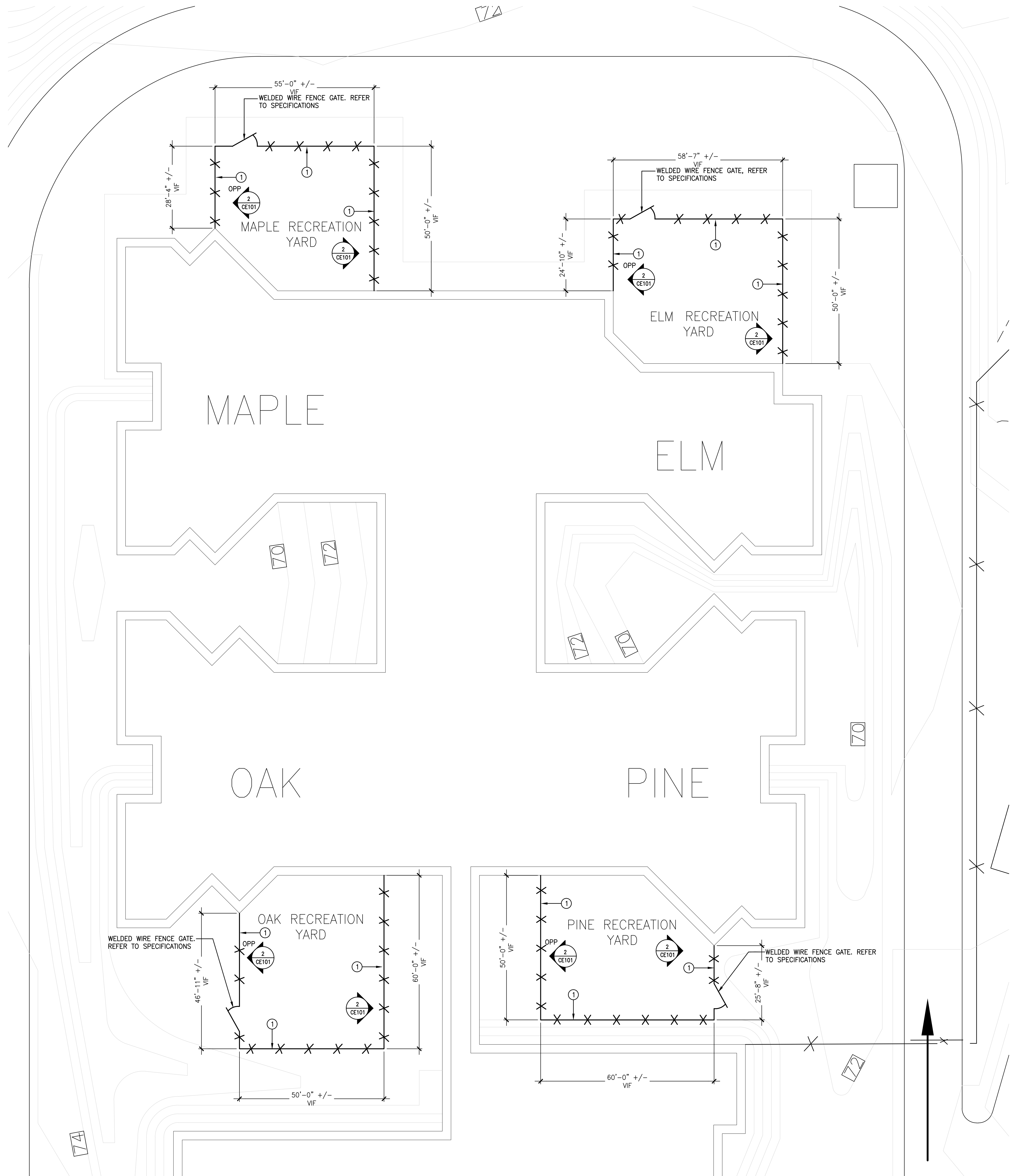
08-26-25

SHEET TITLE:

FENCE SITE PLAN & DETAILS

Original drawing is 30" x 42". Do not scale contents of this drawing.  
SCALE: AS NOTED DESIGNED BY: DJM  
SMRT PROJECT #: 25017 DRAWN BY: DJM

CE101



3 FENCE SECTION DETAIL  
1/2" = 1'-0"

2 FENCE ELEVATION DETAIL  
1/2" = 1'-0"

1 FENCE SITE PLAN  
1/16" = 1'-0"



11 EXISTING CONDITIONS PHOTO (MAPLE)  
NTS



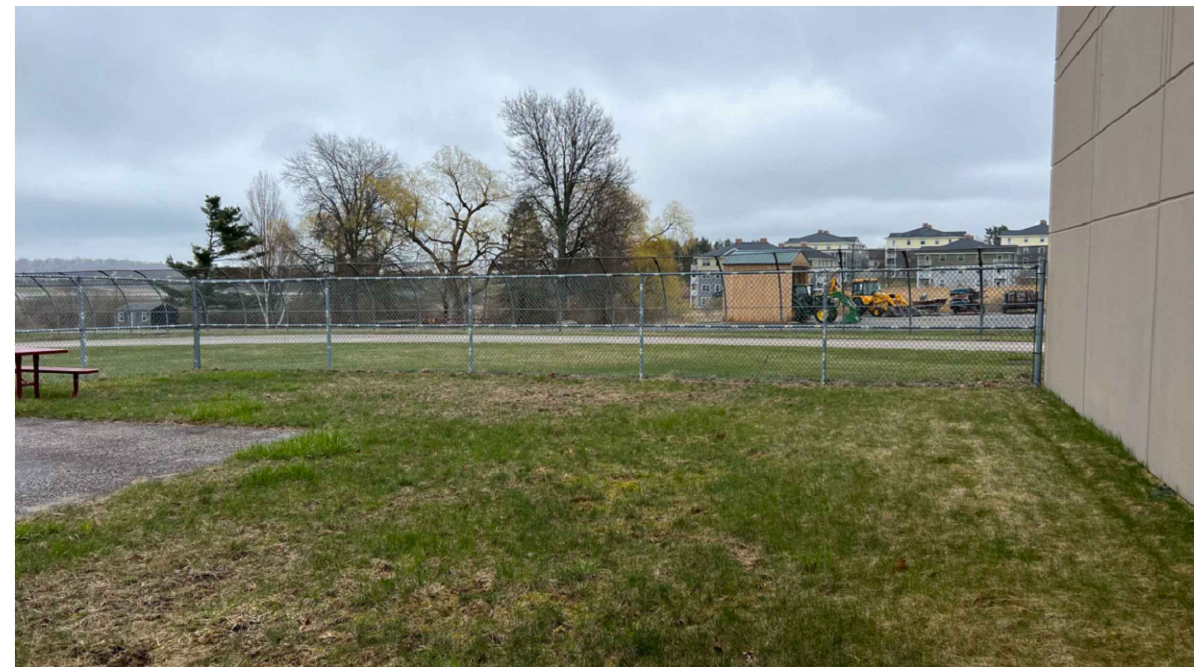
10 EXISTING CONDITIONS PHOTO (MAPLE)  
NTS



9 EXISTING CONDITIONS PHOTO (MAPLE)  
NTS



8 EXISTING CONDITIONS PHOTO (ELM)  
NTS



7 EXISTING CONDITIONS PHOTO (ELM)  
NTS



6 EXISTING CONDITIONS PHOTO (OAK)  
NTS



5 EXISTING CONDITIONS PHOTO (OAK)  
NTS



4 EXISTING CONDITIONS PHOTO (OAK)  
NTS



3 EXISTING CONDITIONS PHOTO (PINE)  
NTS



2 EXISTING CONDITIONS PHOTO (PINE)  
NTS

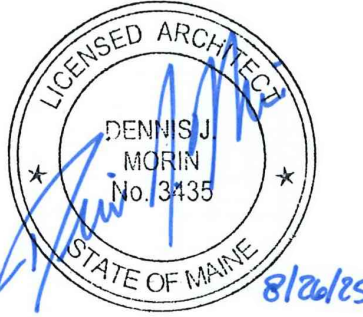
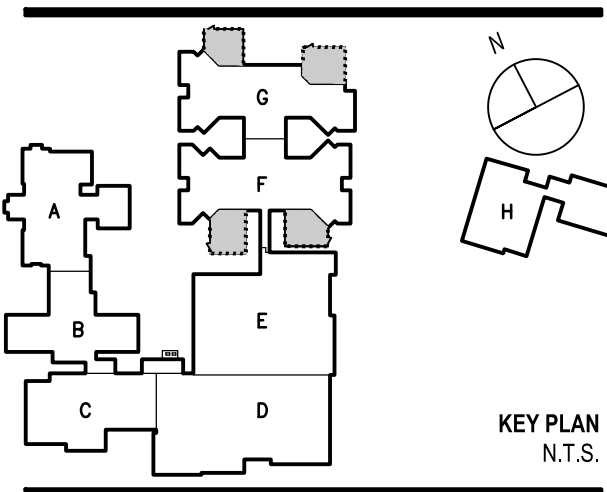


1 EXISTING CONDITIONS PHOTO (PINE)  
NTS

LONG CREEK YOUTH  
DEVELOPMENT CENTER  
FENCE REPLACEMENT



SMRT, Inc.  
75 Washington Ave., Suite 3A  
Portland, Maine 04101  
1.877.700.7678  
www.smrtninc.com  
All reproduction & intellectual property rights reserved  
© 2024 SMRT INC.  
In Association With




# Description Date

ISSUED FOR CONSTRUCTION

08-26-25

SHEET TITLE:  
PHOTOS

Original drawing is 36" x 48". Do not scale contents of this drawing.  
SCALE: AS NOTED DESIGNED BY: DJM  
SMRT PROJECT #: 25017 DRAWN BY: DJM

C-501