

LIGHTING CONTROL NOTES SCHEDULE		
TAG/NOTE	DESCRIPTION OF LIGHTING CONTROL DEVICES AND OPERATION	DETAIL NUMBER (EL-600)
1	WALL SWITCH - MANUAL ON/MANUAL OFF	NO DETAIL
2	WALL SWITCH WITH OCCUPANCY SENSOR - MANUAL ON AND OFF/AUTO OFF	NO DETAIL
3	WALL SWITCH - MANUAL ON AND OFF; AUTO OFF VIA OCCUPANCY SENSORS; DIMMING VIA DAYLIGHT HARVESTING SENSOR FOR FIXTURES INDICATED	NOT USED
4	LIGHTING CONTROLLED BY LCP - REFER TO LIGHTING CONTROL PANEL SCHEDULE	NO DETAIL
5	AUTO ON/AUTO OFF VIA OCCUPANCY SENSOR(S)	F1
6	WALL SWITCH(ES) - MANUAL ON AND OFF; AUTO OFF VIA OCCUPANCY SENSOR(S)	D1
7	WALL SWITCH WITH DIMMER AND OCCUPANCY SENSOR - MANUAL ON AND OFF/MANUAL DIMMING/AUTO OFF	NO DETAIL
8	WALLSTATION(S) - MANUAL ON AND OFF WHERE NOTED ON PLANS; WALLSTATION(S) WITH DIMMER(S) - MANUAL ON AND OFF/MANUAL DIMMING; AUTO OFF VIA OCCUPANCY SENSORS	J1
9	WALLSTATION(S) - MANUAL ON AND OFF, WHERE NOTED ON PLANS; WALLSTATION(S) WITH DIMMER(S) - MANUAL ON AND OFF/MANUAL DIMMING; AUTO OFF VIA OCCUPANCY SENSORS; DIMMING VIA DAYLIGHT HARVESTING SENSOR FOR FIXTURES INDICATED	NOT USED
10	WALL SWITCH - MANUAL ON AND OFF; WALL SWITCH WITH MANUAL DIMMER - RAISE, LOWER, AND ON/OFF; AUTO OFF VIA OCCUPANCY SENSORS	
11	LIGHTING SHALL BE CONTINUOUSLY DIMMED 50%, AND BRIGHTEN TO FULL OUTPUT UPON DETECTION OF MOTION VIA OCCUPANCY SENSOR(S); WITH SENSOR OVERRIDE SWITCHES	NO DETAIL
12	LIGHTING SHALL BE CONTINUOUSLY DIMMED 50%, AND BRIGHTEN TO FULL OUTPUT UPON DETECTION OF MOTION VIA OCCUPANCY SENSOR(S); WITH SENSOR OVERRIDE SWITCHES	A1

EMERGENCY LIGHTING CIRCUITING NOTE: CONNECT ALL EMERGENCY LIGHTING SHOWN ON THIS SHEET TO INVERTER INV2. PROVIDE BYPASS RELAYS AS REQUIRED TO BYPASS LOCAL SWITCHING/DIMMING.

LIGHTING CIRCUITING NOTE: CONNECT NEW LIGHTING TO SAME CIRCUITS FROM WHICH EXISTING LIGHTING WAS REMOVED. DO NOT EXCEED 12A LOAD PER 20A CIRCUIT. VERIFY LOAD IN FIELD.

- 1 REPLACE EXISTING VANITY LIGHT FIXTURE WITH THE INDICATED LIGHT FIXTURE. CONNECT TO EXISTING BRANCH CIRCUIT WIRING AND CONTROLS.
- WIRE AND CONNECT INVERTER INV2 TO A 20A, 1P CIRCUIT BREAKER IN EXISTING PANEL (E)PC2. MOUNT INVERTER INV2 ABOVE ACCESSIBLE CEILING- COORDINATE WITH OTHER BUILDING SYSTEMS FOR BEST LOCATION.



75 York Street  
Portland, Maine 04101  
simonsarchitects.com  
207.772.4656



160 Veranda Street  
Portland, Maine 04103  
P: 207.221.2260  
F: 207.221.2266

© COPYRIGHT 2025 ALLIED ENGINEERING, INC.  
Allied Project No: 23030  
Cad File:

PROJECT NAME:  
MCJA - BUILDING  
C LIMITED  
RENOVATIONS  
15 OAK GROVE RD  
VASSALBORO, ME 04989

SEAL:  
  
NOT FOR  
CONSTRUCTION

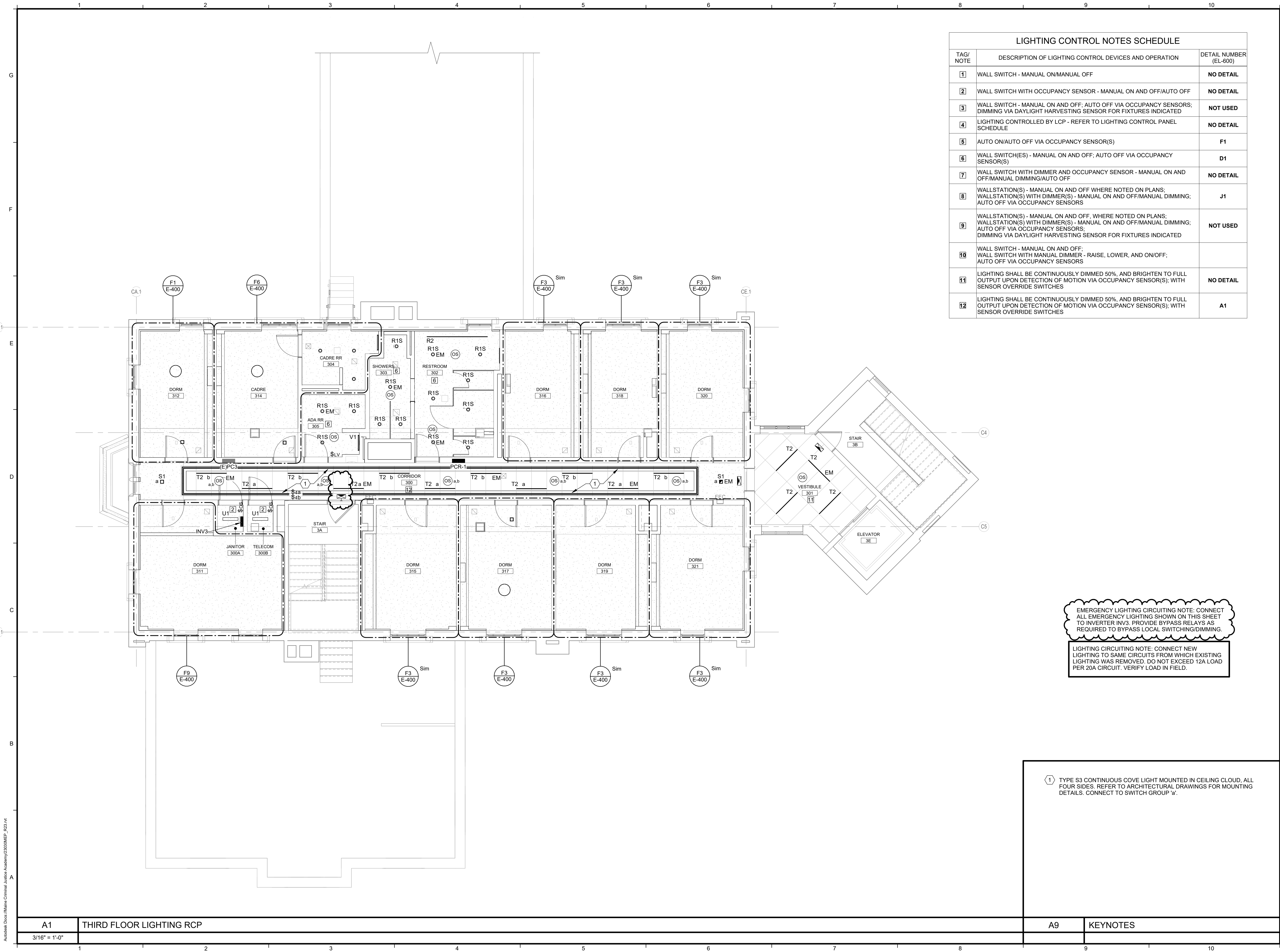
THIS DRAWING IS THE PROPERTY OF  
SIMONS ARCHITECTS (SA) AND IS NOT  
TO BE COPIED OR REPRODUCED IN  
PART OR WHOLE.  
2023 © SCOTT SIMONS ARCHITECTS, LLC

REVISIONS  
1 Addendum No.2 25-05-06

DATE OF ISSUE: APRIL 8, 2025  
PROJECT NUMBER: 2023-0070  
STATUS: ISSUED FOR BID - NOT FOR CONSTRUCTION

LIGHTING PLAN -  
SECOND FLOOR

EL-102



LIGHTING CONTROL NOTES SCHEDULE		
TAG/NOTE	DESCRIPTION OF LIGHTING CONTROL DEVICES AND OPERATION	DETAIL NUMBER (EL-600)
1	WALL SWITCH - MANUAL ON/MANUAL OFF	NO DETAIL
2	WALL SWITCH WITH OCCUPANCY SENSOR - MANUAL ON AND OFF/AUTO OFF	NO DETAIL
3	WALL SWITCH - MANUAL ON AND OFF; AUTO OFF VIA OCCUPANCY SENSORS; DIMMING VIA DAYLIGHT HARVESTING SENSOR FOR FIXTURES INDICATED	NOT USED
4	LIGHTING CONTROLLED BY LCP - REFER TO LIGHTING CONTROL PANEL SCHEDULE	NO DETAIL
5	AUTO ON/AUTO OFF VIA OCCUPANCY SENSOR(S)	F1
6	WALL SWITCH(ES) - MANUAL ON AND OFF; AUTO OFF VIA OCCUPANCY SENSOR(S)	D1
7	WALL SWITCH WITH DIMMER AND OCCUPANCY SENSOR - MANUAL ON AND OFF/MANUAL DIMMING/AUTO OFF	NO DETAIL
8	WALLSTATION(S) - MANUAL ON AND OFF WHERE NOTED ON PLANS; WALLSTATION(S) WITH DIMMER(S) - MANUAL ON AND OFF/MANUAL DIMMING; AUTO OFF VIA OCCUPANCY SENSORS	J1
9	WALLSTATION(S) - MANUAL ON AND OFF; WHERE NOTED ON PLANS; WALLSTATION(S) WITH DIMMER(S) - MANUAL ON AND OFF/MANUAL DIMMING; AUTO OFF VIA OCCUPANCY SENSORS; DIMMING VIA DAYLIGHT HARVESTING SENSOR FOR FIXTURES INDICATED	NOT USED
10	WALL SWITCH - MANUAL ON AND OFF; WALL SWITCH WITH MANUAL DIMMER - RAISE, LOWER, AND ON/OFF; AUTO OFF VIA OCCUPANCY SENSORS	
11	LIGHTING SHALL BE CONTINUOUSLY DIMMED 50%, AND BRIGHTEN TO FULL OUTPUT UPON DETECTION OF MOTION VIA OCCUPANCY SENSOR(S); WITH SENSOR OVERRIDE SWITCHES	NO DETAIL
12	LIGHTING SHALL BE CONTINUOUSLY DIMMED 50%, AND BRIGHTEN TO FULL OUTPUT UPON DETECTION OF MOTION VIA OCCUPANCY SENSOR(S); WITH SENSOR OVERRIDE SWITCHES	A1

EMERGENCY LIGHTING CIRCUITING NOTE: CONNECT ALL EMERGENCY LIGHTING SHOWN ON THIS SHEET TO INVERTER INV3. PROVIDE BYPASS RELAYS AS REQUIRED TO BYPASS LOCAL SWITCHING/DIMMING.

LIGHTING CIRCUITING NOTE: CONNECT NEW LIGHTING TO SAME CIRCUITS FROM WHICH EXISTING LIGHTING WAS REMOVED. DO NOT EXCEED 12A LOAD PER 20A CIRCUIT. VERIFY LOAD IN FIELD.

1 TYPE S3 CONTINUOUS COVE LIGHT MOUNTED IN CEILING CLOUD. ALL FOUR SIDES. REFER TO ARCHITECTURAL DRAWINGS FOR MOUNTING DETAILS. CONNECT TO SWITCH GROUP 'a'.



75 York Street  
Portland, Maine 04101  
simonsarchitects.com  
207.772.4656



160 Veranda Street  
Portland, Maine 04103  
P: 207.221.2260  
F: 207.221.2266

© COPYRIGHT 2023 ALLIED ENGINEERING, INC.  
Allied Project No: 23030  
Cad File:

PROJECT NAME:  
MCJA - BUILDING  
C LIMITED  
RENOVATIONS  
15 OAK GROVE RD  
VASSALBORO, ME 04989

SEAL:  
  
NOT FOR  
CONSTRUCTION

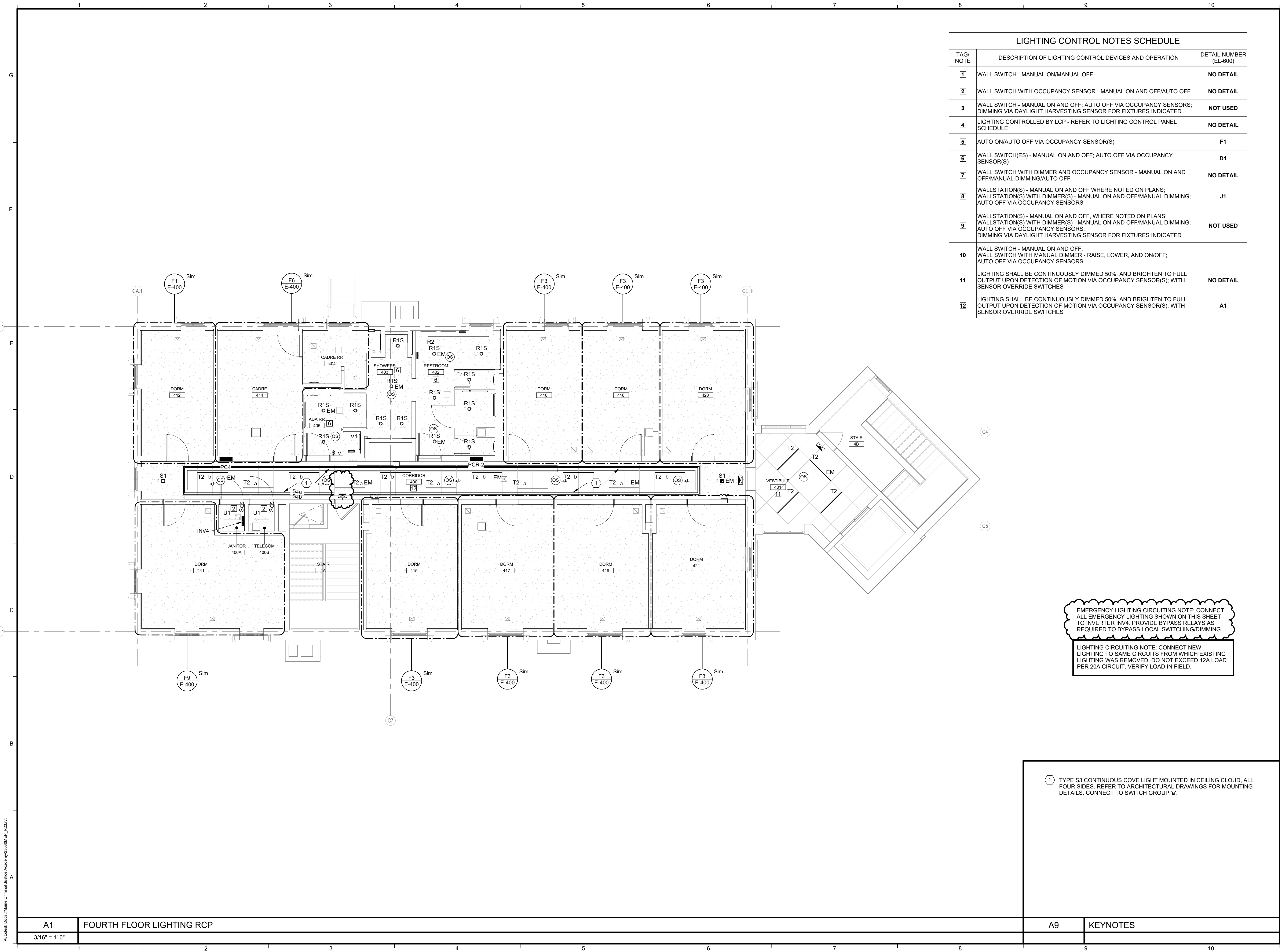
THIS DRAWING IS THE PROPERTY OF  
SIMONS ARCHITECTS (SA) AND IS NOT  
TO BE COPIED OR REPRODUCED IN  
PART OR WHOLE.  
2023 © SCOTT SIMONS ARCHITECTS, LLC

REVISIONS  
1 Addendum No.2 25-05-06

DATE OF ISSUE: APRIL 8, 2025  
PROJECT NUMBER: 2023-0070  
STATUS: ISSUED FOR BID - NOT FOR CONSTRUCTION

LIGHTING PLAN -  
THIRD FLOOR

EL-103



75 York Street  
Portland, Maine 04101  
simonsarchitects.com  
207.772.4656



160 Veranda Street  
Portland, Maine 04103  
P: 207.221.2260  
F: 207.221.2266

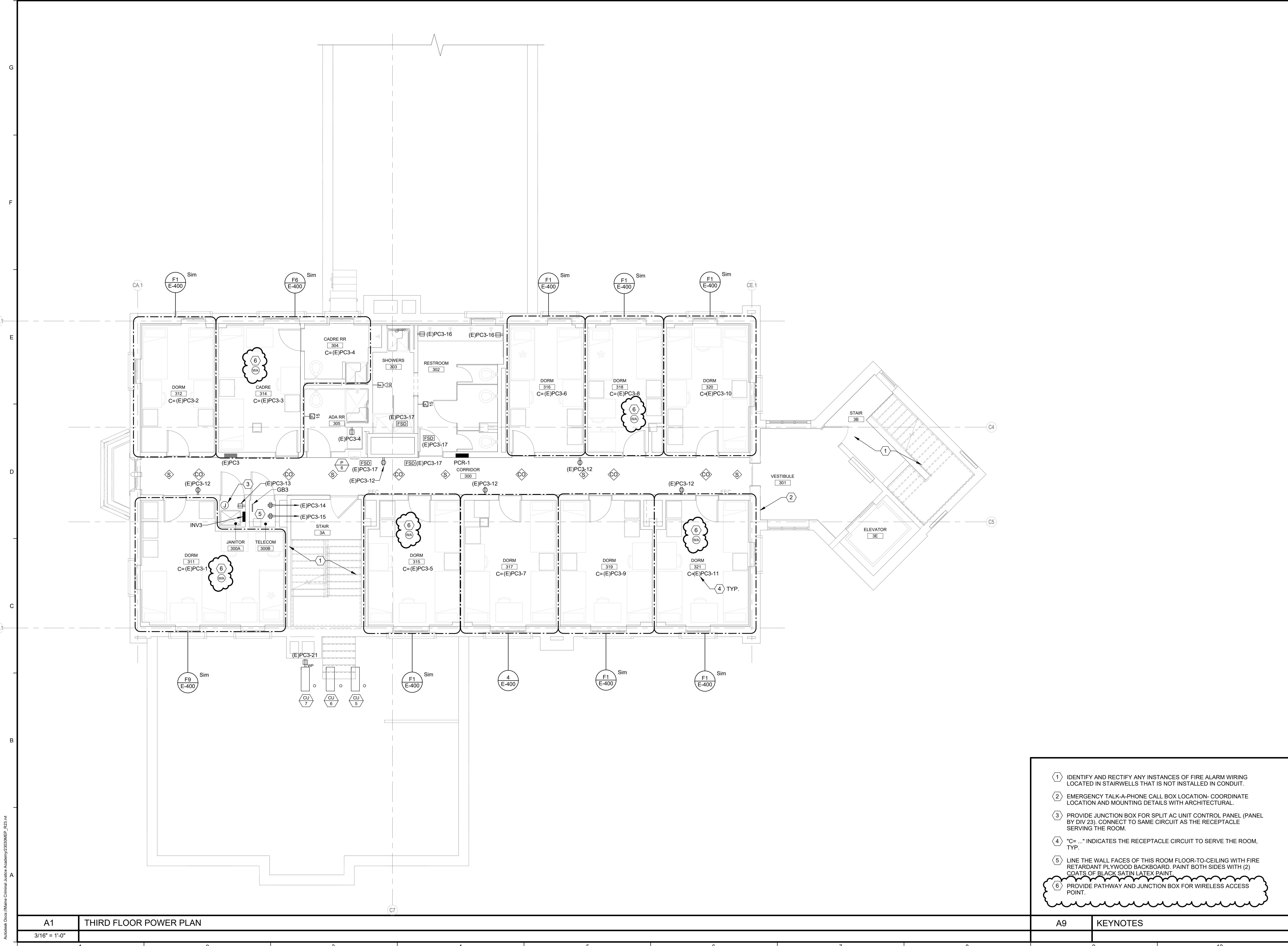
© COPYRIGHT 2025 ALLIED ENGINEERING, INC.  
Allied Project No: 23030  
Cad File:

PROJECT NAME:  
**MCJA - BUILDING C LIMITED RENOVATIONS**  
15 OAK GROVE RD  
VASSALBORO, ME 04989

SEAL:  
**NOT FOR CONSTRUCTION**

THIS DRAWING IS THE PROPERTY OF SIMONS ARCHITECTS (SA) AND IS NOT TO BE COPIED OR REPRODUCED IN PART OR WHOLE.  
2023 © SCOTT SIMONS ARCHITECTS, LLC

Autodesk Docs\\Maine Criminal Justice Academy\\23030MEP\_F03.rvt



75 York Street  
Portland, Maine 04101  
simonsarchitects.com  
207.772.4656



160 Veranda Street  
Portland, Maine 04103  
P: 207.221.2260  
F: 207.221.2266

© COPYRIGHT 2025 ALLIED ENGINEERING, INC.  
Allied Project No: 23030  
Cad File:

PROJECT NAME:  
**MCJA - BUILDING  
C LIMITED  
RENOVATIONS**  
15 OAK GROVE RD  
VASSALBORO, ME 04989

SEAL:  
  
**NOT FOR  
CONSTRUCTION**

THIS DRAWING IS THE PROPERTY OF  
SIMONS ARCHITECTS (SA) AND IS NOT  
TO BE COPIED OR REPRODUCED IN  
PART OR WHOLE.  
2023 © SCOTT SIMONS ARCHITECTS, LLC

△ REVISIONS
1 Addendum No.2
25-05-06

DATE OF ISSUE: **APRIL 8, 2025**  
PROJECT NUMBER: **2023-0070**  
STATUS: **ISSUED FOR BID - NOT  
FOR CONSTRUCTION**

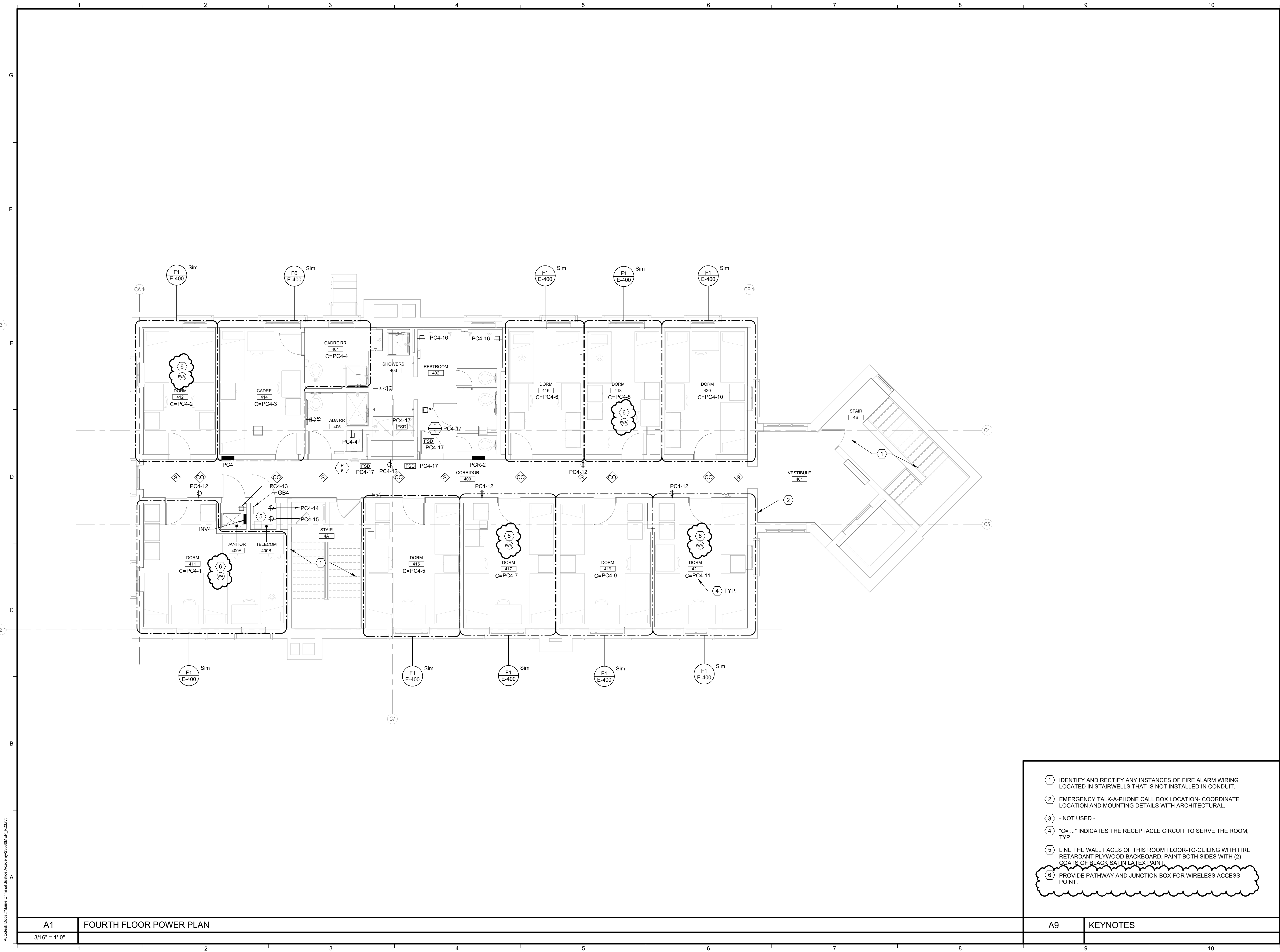
**POWER & SYSTEMS  
PLAN - THIRD  
FLOOR**

**EP-103**

- 1 IDENTIFY AND RECTIFY ANY INSTANCES OF FIRE ALARM WIRING LOCATED IN STAIRWELLS THAT IS NOT INSTALLED IN CONDUIT.
- 2 EMERGENCY TALK-A-PHONE CALL BOX LOCATION- COORDINATE LOCATION AND MOUNTING DETAILS WITH ARCHITECTURAL.
- 3 PROVIDE JUNCTION BOX FOR SPLIT AC UNIT CONTROL PANEL (PANEL BY DIV 23). CONNECT TO SAME CIRCUIT AS THE RECEPTACLE SERVING THE ROOM.
- 4 "C= ..." INDICATES THE RECEPTACLE CIRCUIT TO SERVE THE ROOM, TYP.
- 5 LINE THE WALL FACES OF THIS ROOM FLOOR-TO-CEILING WITH FIRE RETARDANT PLYWOOD BACKBOARD. PAINT BOTH SIDES WITH (2) COATS OF BLACK SATIN LATEX PAINT.
- 6 PROVIDE PATHWAY AND JUNCTION BOX FOR WIRELESS ACCESS POINT.

A9 KEYNOTES





75 York Street  
Portland, Maine 04101  
simonsarchitects.com  
207.772.4656



160 Veranda Street  
Portland, Maine 04103  
P: 207.221.2260  
F: 207.221.2266

© COPYRIGHT 2025 ALLIED ENGINEERING, INC.  
Allied Project No: 23030  
Cad File:

PROJECT NAME:  
**MCJA - BUILDING  
C LIMITED  
RENOVATIONS**  
15 OAK GROVE RD  
VASSALBORO, ME 04989

SEAL:  
  
**NOT FOR  
CONSTRUCTION**

THIS DRAWING IS THE PROPERTY OF  
SIMONS ARCHITECTS (SA) AND IS NOT  
TO BE COPIED OR REPRODUCED IN  
PART OR WHOLE.  
2023 © SCOTT SIMONS ARCHITECTS, LLC

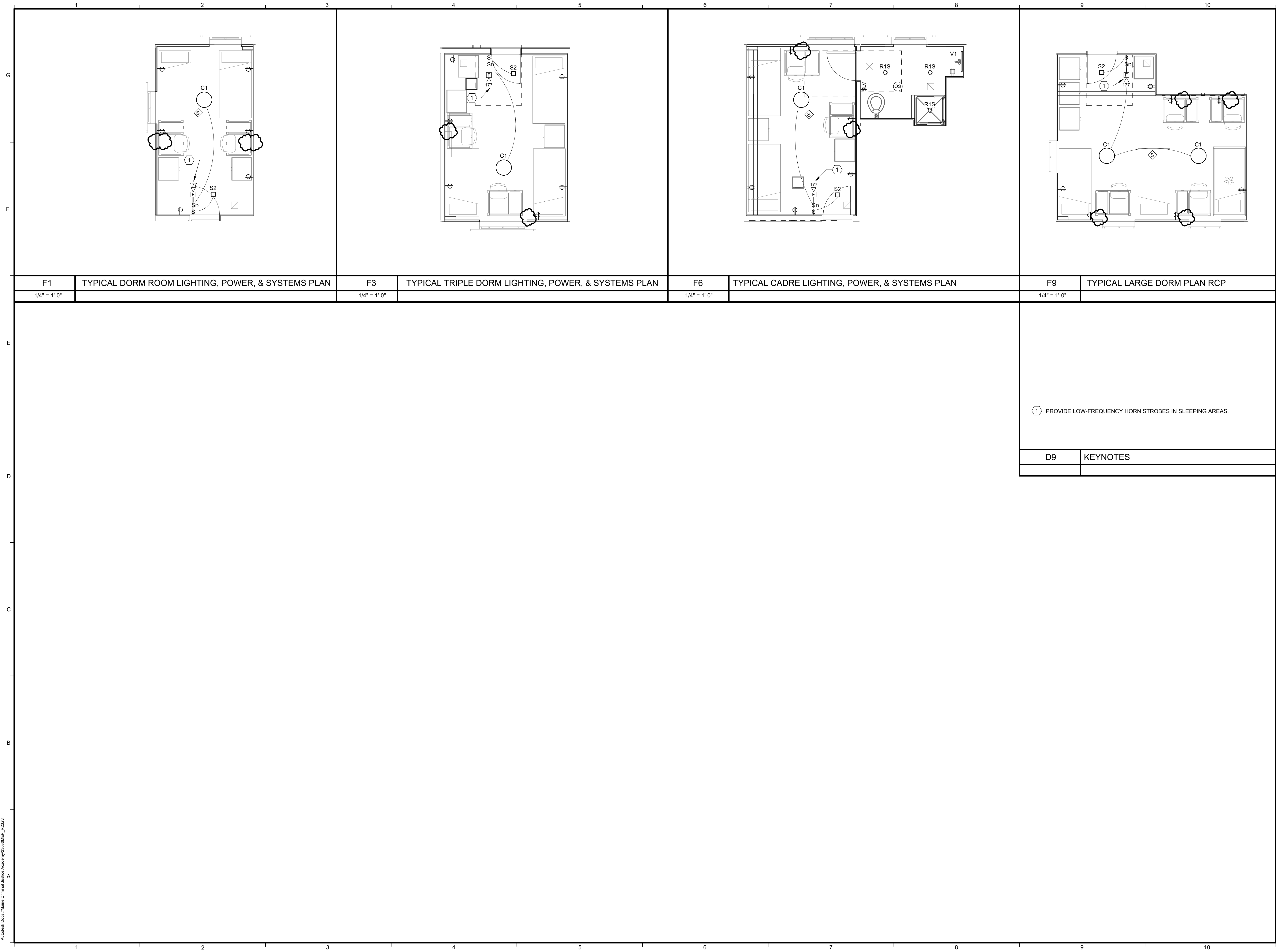
△ REVISIONS
1 Addendum No.2 25-05-06

DATE OF ISSUE: **APRIL 8, 2025**  
PROJECT NUMBER: **2023-0070**  
STATUS: **ISSUED FOR BID - NOT  
FOR CONSTRUCTION**

**POWER & SYSTEMS  
PLAN - FOURTH  
FLOOR**

**EP-104**

- 1 IDENTIFY AND RECTIFY ANY INSTANCES OF FIRE ALARM WIRING LOCATED IN STAIRWELLS THAT IS NOT INSTALLED IN CONDUIT.
- 2 EMERGENCY TALK-A-PHONE CALL BOX LOCATION- COORDINATE LOCATION AND MOUNTING DETAILS WITH ARCHITECTURAL.
- 3 - NOT USED -
- 4 "C= ..." INDICATES THE RECEPTACLE CIRCUIT TO SERVE THE ROOM, TYP.
- 5 LINE THE WALL FACES OF THIS ROOM FLOOR-TO-CEILING WITH FIRE RETARDANT PLYWOOD BACKBOARD. PAINT BOTH SIDES WITH (2) COATS OF BLACK SATIN LATEX PAINT.
- 6 PROVIDE PATHWAY AND JUNCTION BOX FOR WIRELESS ACCESS POINT.



Autodesk Docs\\Maine Criminal Justice Academy\\2003\\MEP\_F23.rvt



75 York Street  
Portland, Maine 04101  
simonsarchitects.com  
207.772.4656



160 Veranda Street  
Portland, Maine 04103  
P: 207.221.2260  
F: 207.221.2266

© COPYRIGHT 2025 ALLIED ENGINEERING, INC.

Allied Project No: 23030

Cad File:

PROJECT NAME:  
**MCJA - BUILDING  
C LIMITED  
RENOVATIONS**  
15 OAK GROVE RD  
VASSALBORO, ME 04989

SEAL:  
  
**NOT FOR  
CONSTRUCTION**

THIS DRAWING IS THE PROPERTY OF  
SIMONS ARCHITECTS (SA) AND IS NOT  
TO BE COPIED OR REPRODUCED IN  
PART OR WHOLE.  
2023 © SCOTT SIMONS ARCHITECTS, LLC

△ REVISIONS  
1 Addendum No.2 25-05-06

DATE OF ISSUE: APRIL 8, 2025  
PROJECT NUMBER: 2023-0070  
STATUS: ISSUED FOR BID - NOT  
FOR CONSTRUCTION

**ELECTRICAL  
ENLARGED PLANS**

**E-400**