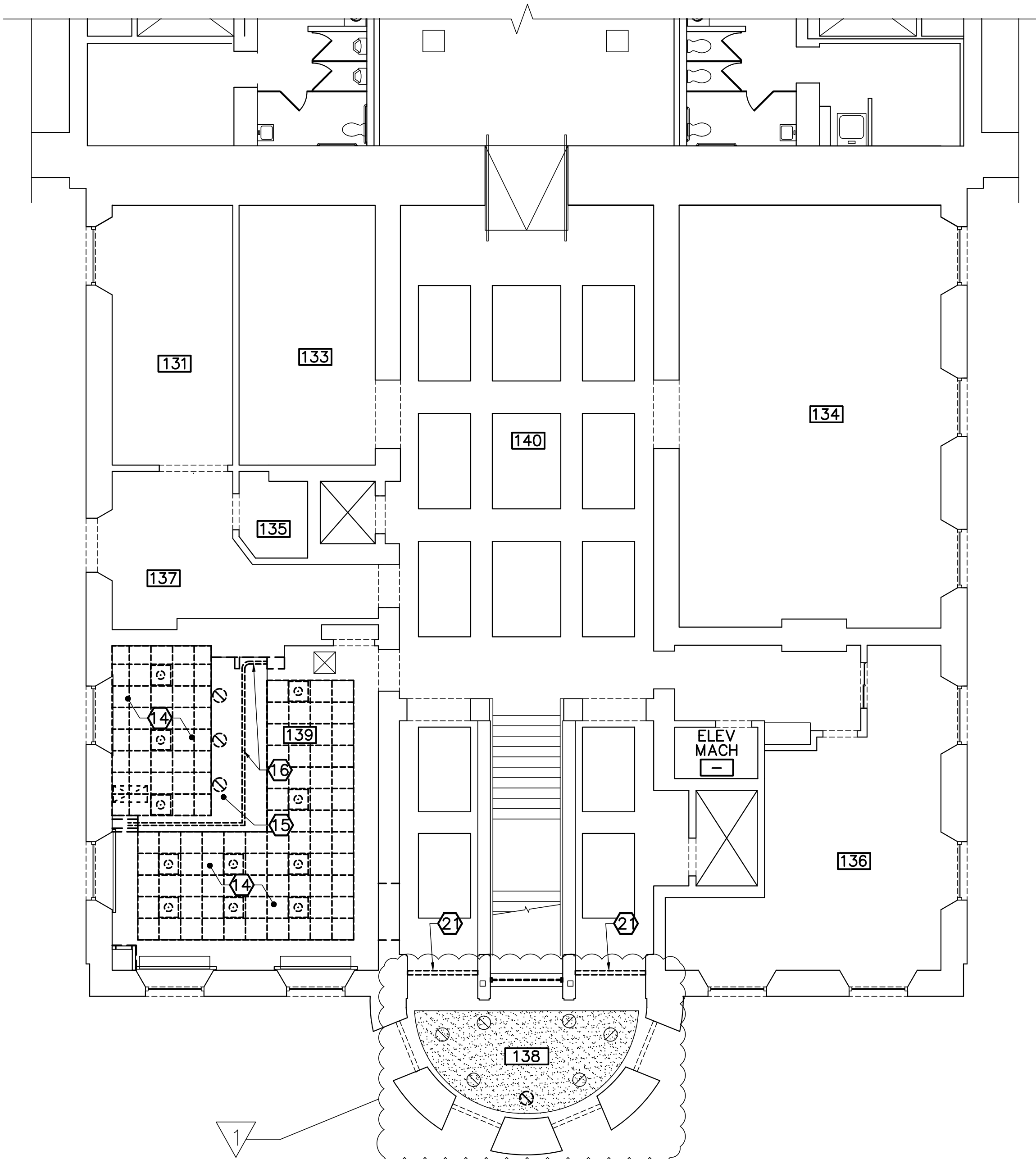


1 STATE HOUSE- PARTIAL FIRST FLOOR REMOVALS PLAN
AD104/ SCALE: 1/8"=1'-0"



2 STATE HOUSE- PARTIAL FIRST FLOOR
REFLECTED CEILING REMOVALS PLAN
AD104/ SCALE: 1/8"=1'-0"

GENERAL NOTES

- SEE SHEET G-001 FOR GENERAL CONSTRUCTION NOTES, LEGEND, AND ABBREVIATIONS.
- ALL ITEMS ON THIS SHEET ARE EXISTING UNLESS NOTED OTHERWISE. VERIFY IN FIELD DIMENSIONS PRIOR TO COMMENCEMENT OF REMOVALS.
- DUE TO AGE OF THE BUILDING LEAD PAINT IS EXPECTED TO BE PRESENT WITHIN THE WORK AREA, ESPECIALLY AT ORIGINAL PLASTER CEILING ABOVE SUSPENDED CEILING. CONTRACTOR IS TO TEST FOR LEAD PAINT PRIOR TO START OF CONSTRUCTION. IF FOUND ALL PROCEDURES REQUIRED BY THE EPA AND OSHA ARE TO BE FOLLOWED.
- COORDINATE REMOVALS OF ALL MECHANICAL EQUIPMENT WITH MECHANICAL REMOVALS DRAWINGS.
- COORDINATE REMOVALS OF ALL CEILING MOUNTED DEVICES AND FIXTURES WITH ELECTRICAL REMOVALS DRAWINGS.

EXISTING KEYNOTE (THIS SHEET ONLY)

- 1 UNIT VENTILATORS.

REMOVALS KEYNOTES (THIS SHEET ONLY)

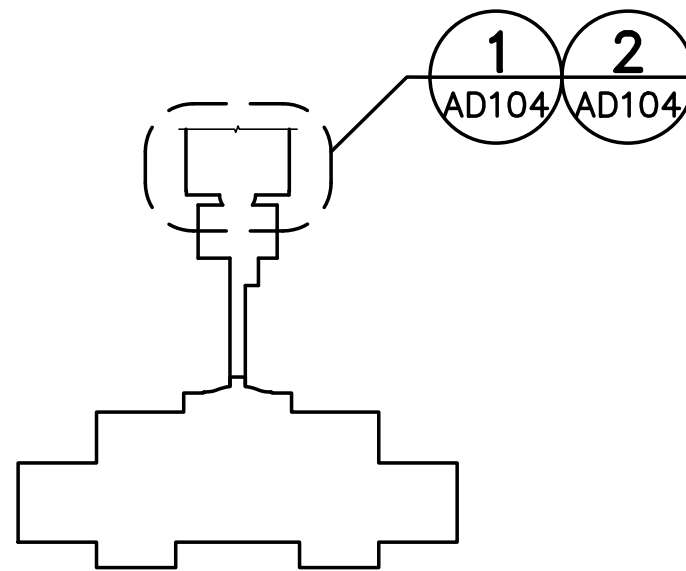
- REMOVE VENDING MACHINES AND RETURN TO OWNER.
- REMOVE SECURITY SCREENING EQUIPMENT AND PARTIAL HEIGHT PARTITION PANELS. ALL ITEMS ARE TO BE RETURNED TO OWNER.
- REMOVE CASEWORK AND RETURN TO OWNER.
- REMOVE WALL MOUNTED PIPE CLAMPS. COORDINATE ADDITIONAL PLUMBING AND PIPING REMOVALS WITH PLUMBING SHEETS.
- REMOVE DRYWALL AND METAL STUD WALLS AS INDICATED. SLIDING SECURITY GRILL DOORS AND ASSOCIATED MOUNTING AND HARDWARE TO BE REMOVED.
- REMOVE CERAMIC TILE FLOORING AND ASSOCIATED TILE COVE BASE. FLOOR TO BE PREPPED FOR NEW FINISHES AS SCHEDULED.
- REMOVE CARPET FLOORING. ASSOCIATED PAINTED WOOD BASEBOARD TRIM TO BE REMOVED AND SALVAGED FOR REINSTALLATION.
- REMOVE PAINTED PLYWOOD AT LOWER 5'-0"+/- OF CHASE. CUT 1'-6"x 1'-6" OPENING IN DRYWALL AND METAL FRAMED WALL FOR ACCESS PANEL.
- REMOVE CAPITAL POLICE DESK AND RAISED PLATFORM FRAMING WITH CARPET FLOORING.
- REMOVE GLASS DOOR AND ASSOCIATED HARDWARE.
- REMOVE ALUMINUM STOREFRONT ENTRY DOOR AND ASSOCIATED FRAME AND HARDWARE. SALVAGE LOCKSETS, CORES, AND CYLINDERS AND RETURN TO OWNER.
- CAREFULLY REMOVE AND STORE ALUMINUM STOREFRONT SYSTEM WITH STATE SEAL FOR REINSTALLATION.
- REMOVE GRANITE BENCH AND RETURN TO OWNER.
- REMOVE 2x2 ACOUSTICAL SUSPENDED CEILING TILES AND GRID.
- REMOVE GYPSUM WALLBOARD SOFFIT AND ASSOCIATED LIGHT GAUGE FRAMING FOR SOFFIT.
- REMOVE TRACK AND HARDWARE FOR SLIDING SECURITY GRILL DOOR.
- CUT-OUT SECTION OF MULTI-WYTHE MASONRY WALL WITH PLASTER FINISH FOR 5'-3" x 7'-2" ROUGH OPENING. COORDINATE ADDITIONAL MASONRY REMOVALS REQUIRED FOR INSTALLATION OF STEEL LINTELS. REMOVE ASSOCIATED TILE BASE WITH WOOD CAP AT OPENING. EXISTING WALL CONSTRUCTION IS ASSUMED TO BE MASONRY WALL 5 WYTHES THICK(1'-8"±) WITH FURRING AND DRYWALL EACH SIDE OVERALL WALL THICKNESS 2'-0"±.
- REMOVE BUILDING DIRECTORY AND SIGNAGE AND SALVAGE FOR REINSTALLATION.
- OWNER TO REMOVE WALL MOUNTED COPPER ART PIECE PRIOR TO COMMENCEMENT OF WORK.
- REMOVE ROOM SIGNAGE.
- REMOVE GYP SOFFIT AND FRAMING FOR COORDINATION OF DOOR CLOSER. SEE DETAIL 10/AE601

REMOVALS CEILING LEGEND

- EXISTING 2'-0"x2'-0" ACOUSTICAL CEILING TILE SYSTEM
- REMOVE 2'-0"x2'-0" ACOUSTICAL CEILING TILE SYSTEM
- EXISTING GYPSUM BOARD CEILING SYSTEM
- REMOVE GYPSUM BOARD CEILING SYSTEM

REMOVALS LEGEND

- EXISTING (TO REMAIN)
- EXISTING TO BE REMOVED

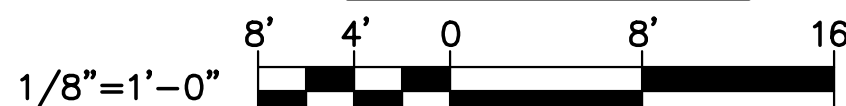


KEY PLAN
NOT TO SCALE



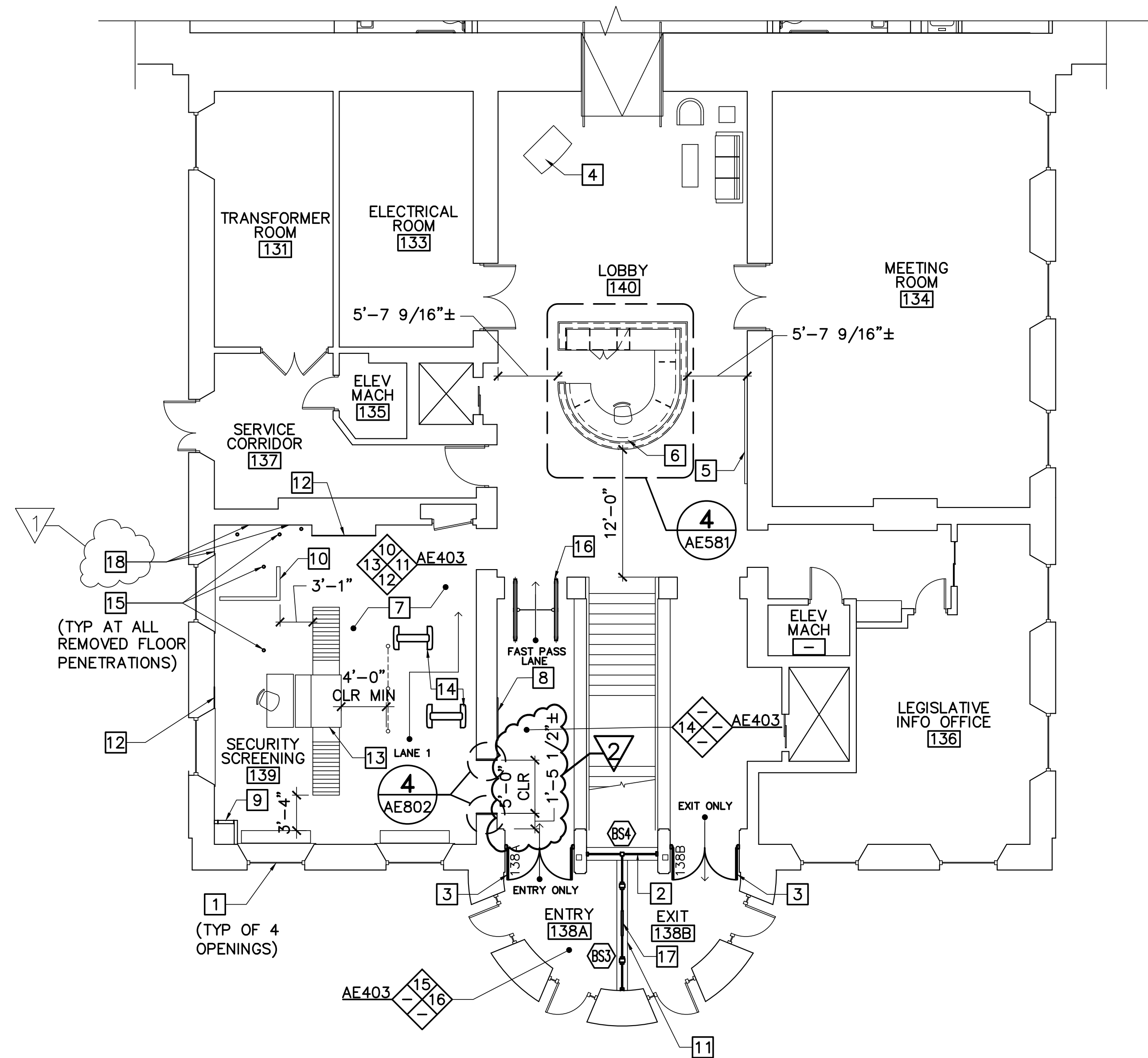
1/8"=1'-0"

GRAPHIC SCALE

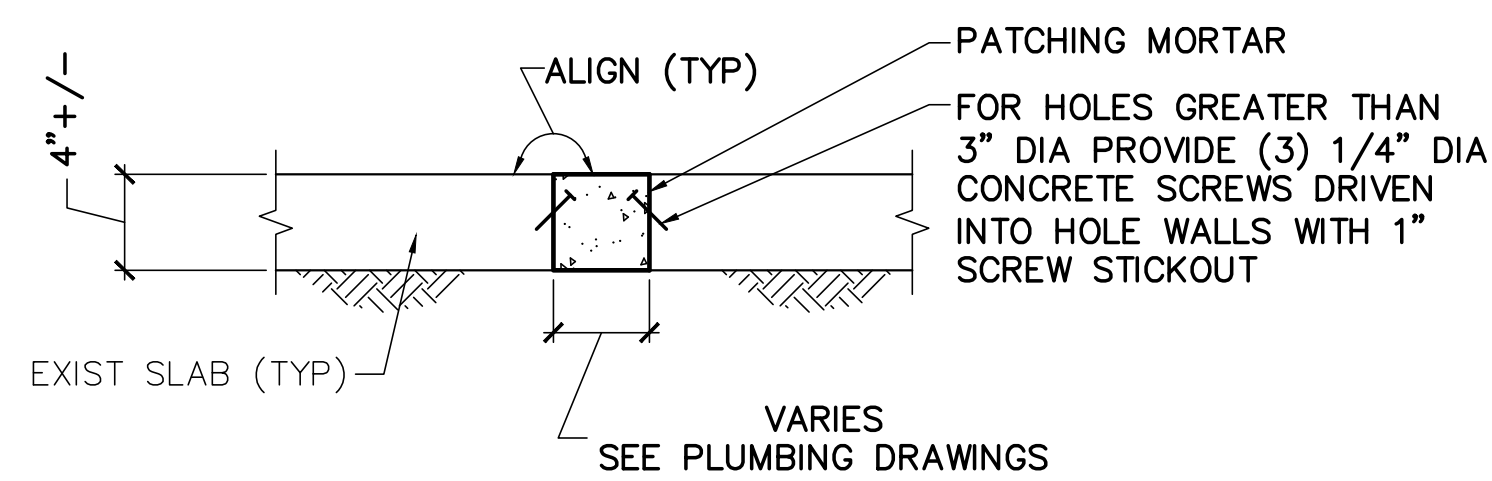


CHECK GRAPHIC SCALE BEFORE USING

				STATE OF MAINE BGS			
				TITLE CROSS BUILDING AND STATE HOUSE SECURITY SCREENING CENTERS			
				LOCATION AUGUSTA, MAINE			
				TITLE THIS DWG.			
				STATE HOUSE- PARTIAL FIRST FLOOR REMOVALS PLAN AND REFLECTED CEILING PLAN			
				OAK POINT ASSOCIATES			
				AD104			
				NO. 22205.06			
				DATE 1/2/2025			
				231 Main Street, Bangor, Maine 04905			



1 STATE HOUSE- PARTIAL FIRST FLOOR PLAN
AE103 SCALE: 1/8"=1'-0"



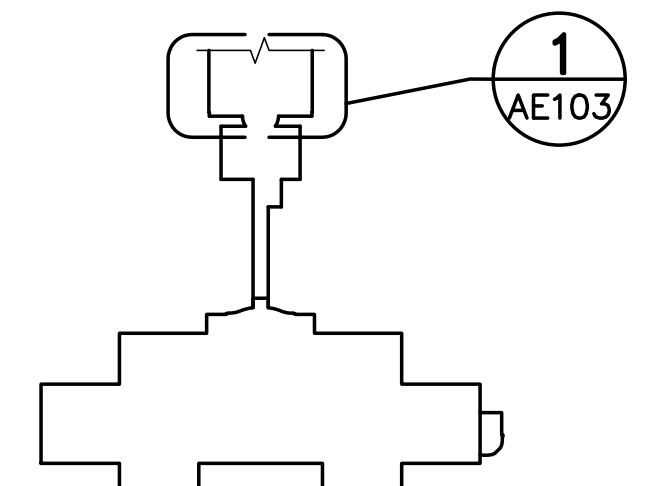
2 TYP SLAB INFILL DETAIL AT PLUMBING PENETRATION
AE103 SCALE: 1-1/2"=1'-0"

GENERAL NOTES (THIS SHEET ONLY)

- SEE SHEET G-001 FOR GENERAL CONSTRUCTION NOTES, LEGEND, AND ABBREVIATIONS.
- ALL DIMENSIONS ARE TO FACE OF EXISTING FINISHES AT EXISTING WALLS OR ROUGH FRAMING OF ALL NEW WALLS UNLESS NOTED OTHERWISE.
- FILL, PATCH, PAINT, OR OTHERWISE REFINISH EXISTING SURFACES DISTURBED BY REMOVALS OR RELOCATION WORK TO MATCH EXISTING.

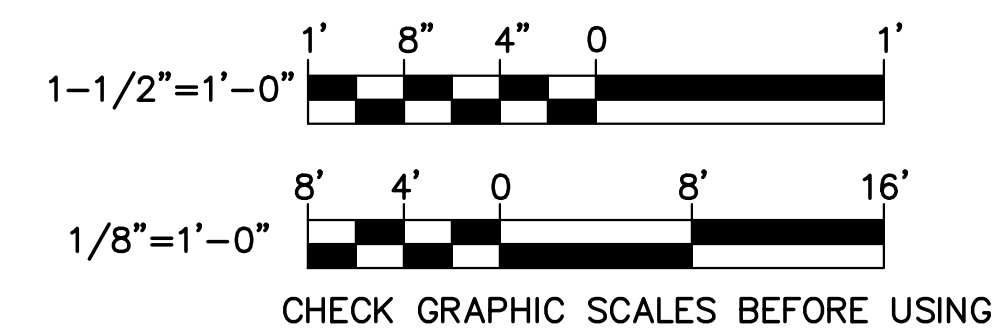
KEYNOTES (THIS SHEET ONLY)

- PRIVACY AND SECURITY FILM AT EXISTING EXTERIOR GLAZING. BASIS OF DESIGN 3M SCOTCHSHIELD ULTRA SAFETY AND SECURITY.
- ALUMINUM STOREFRONT SYSTEM BALLISTIC RATED UL LEVEL 3.
- BALLISTIC RATED ALUMINUM STOREFRONT ENTRY DOORS UL LEVEL 3.
- REINSTALL STATE HOUSE TOUR STATION.
- COPPER ART WORK TO BE RELOCATED AND REINSTALLED BY OWNER.
- BUILT-IN BALLISTIC RATED CAPITAL POLICE DESK. SEE DETAILS AND ENLARGED PLANS ON AE581.
- CARPET TILE FLOORING. SEE AE802.
- REINSTALL SIGNAGE DIRECTORY.
- PROVIDE 18 INCH BY 18 INCH RECESSED METAL ACCESS PANEL FOR WATER MAIN VALVE. BASIS-OF-DESIGN PRODUCT "RECESSED ACCESS DOOR", NYSTROM, MODEL RW.
- PARTIAL HEIGHT PARTITION FOR SCREENING AREA. TO BE FURNISHED AND INSTALLED BY OWNER.
- GRANITE CURB BELOW. MATCH HEIGHT OF ADJACENT CURB.
- PATCH GYP WALL AT REMOVAL OF SECURITY GRILLE DOOR.
- BAGGAGE SECURITY SCREENING EQUIPMENT PROVIDED BY OWNER. FINAL LOCATIONS TO BE REVIEWED IN FIELD WITH OWNER/ARCHITECT. SEE ELECTRICAL DRAWINGS FOR ADDITIONAL INFORMATION.
- WALKTHROUGH SECURITY SCREENING EQUIPMENT PROVIDED BY OWNER. FINAL LOCATIONS TO BE REVIEWED IN FIELD WITH OWNER/ARCHITECT. SEE ELECTRICAL DRAWINGS FOR ADDITIONAL INFORMATION.
- PATCH 4 INCH+/- CONCRETE SLAB AT REMOVED PLUMBING PENETRATION AND FLOOR DRAINS. SEE PLUMBING DRAWINGS FOR SIZES AND DETAIL 2/AE103 FOR ADDITIONAL INFORMATION.
- INSTALL OWNER PROVIDED ADA COMPLIANT TURNSTILE. SEE ELECTRICAL DRAWINGS FOR ADDITIONAL INFORMATION.
- REINSTALL SALVAGED STOREFRONT WITH STATE SEAL. SEE 3/AE602 FOR ADDITIONAL INFORMATION.
- PATCH DRYWALL AT ALL REMOVED WALL MOUNTED PIPING SUPPORTS.



KEY PLAN
NOT TO SCALE
PLAN
NORTH

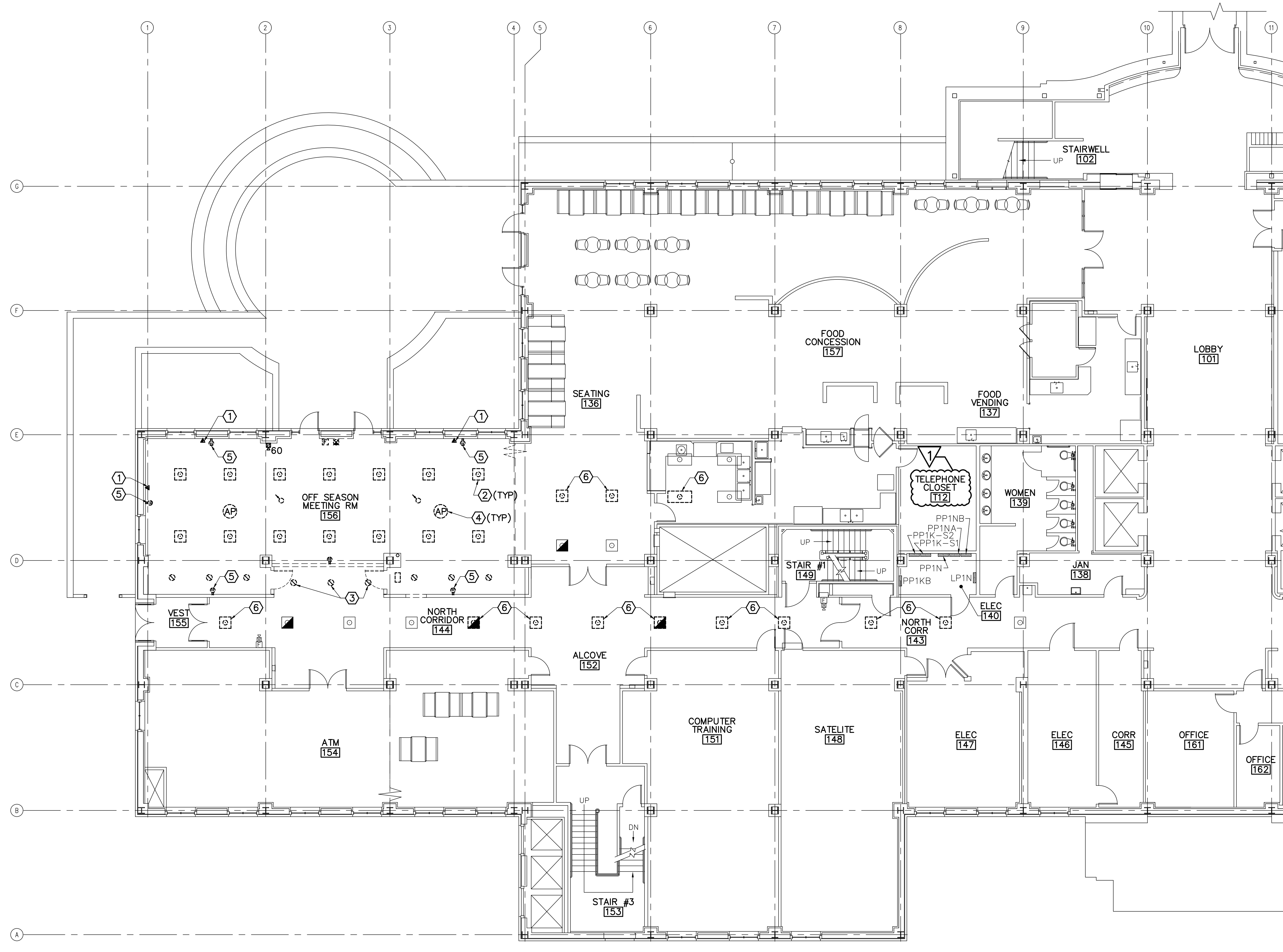
GRAPHIC SCALES



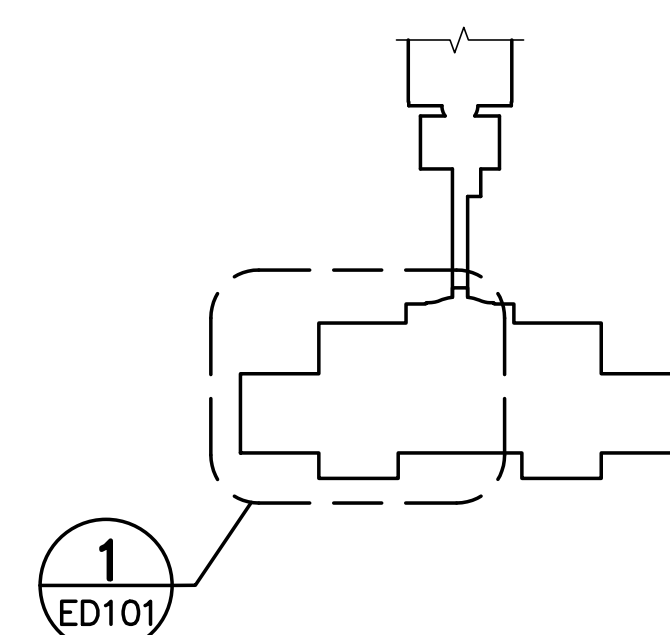
STATE OF MAINE BGS			
TITLE CROSS BUILDING AND STATE HOUSE SECURITY SCREENING CENTERS AUGUSTA, MAINE			
LOCATION AUGUSTA, MAINE			
STATE HOUSE - PARTIAL FIRST FLOOR PLAN			
OAK POINT ASSOCIATES			
DRAWING NO. AE103			
NO. DATE DESCRIPTION BY CHECK BY: LRS			
REVISIONS			
NO. 22205.06			
DATE 1/2/2025			
201 Main Street, Bangor, Maine 04905			

1. REFER TO E-001 FOR ELECTRICAL SYMBOLS, ABBREVIATIONS, AND GENERAL NOTES.

- ① REMOVE COMMUNICATIONS OUTLET. REMOVE CONDUIT UP TO THE CEILING FOR FUTURE USE. REFER TO ET101 FOR COMMUNICATION OUTLET LOCATION. COORDINATE REMOVALS OF EXISTING COMMUNICATIONS CABLES WITH SOM LAN.
- ② REMOVE LIGHT FIXTURES IN OFF SEASON MEETING ROOM. REMOVE WIRING AND CONDUIT BACK TO SOURCE PANEL LP1N-6 OR NEXT EXISTING TO REMAIN LIGHTING FIXTURE OR DEVICE ON SAME CIRCUIT. EXISTING CIRCUIT ALSO PROVIDES POWER TO LIGHT FIXTURES IN SEATING ROOM 136 AND FOOD CONCESSION 157.
- ③ REMOVE DOWNLIGHT FIXTURES. REMOVE WIRING BACK TO SOURCE PANEL LP1N-2 OR NEXT EXISTING TO REMAIN LIGHTING FIXTURE OR DEVICE ON SAME CIRCUIT.
- ④ REMOVE AND RETURN TO OWNER CEILING MOUNTED ACCESS POINTS. PROTECT EXISTING CONDUIT FOR REUSE. COORDINATE REMOVALS OF EXISTING COMMUNICATIONS CABLES WITH SOM LAN.
- ⑤ REMOVE RECEPTACLES FROM EXISTING WALL. REMOVE CONDUCTORS AND CONDUIT BACK TO SOURCE.
- ⑥ REMOVE LIGHT FIXTURE AND SALVAGE FOR REINSTALLATION. PROTECT EXISTING WIRING AND CONDUIT FOR REUSE.



1 PARTIAL FIRST FLOOR ELECTRICAL REMOVALS PLAN
ED101 SCALE: 1/8"=1'-0"



KEY PLAN
NOT TO SCALE



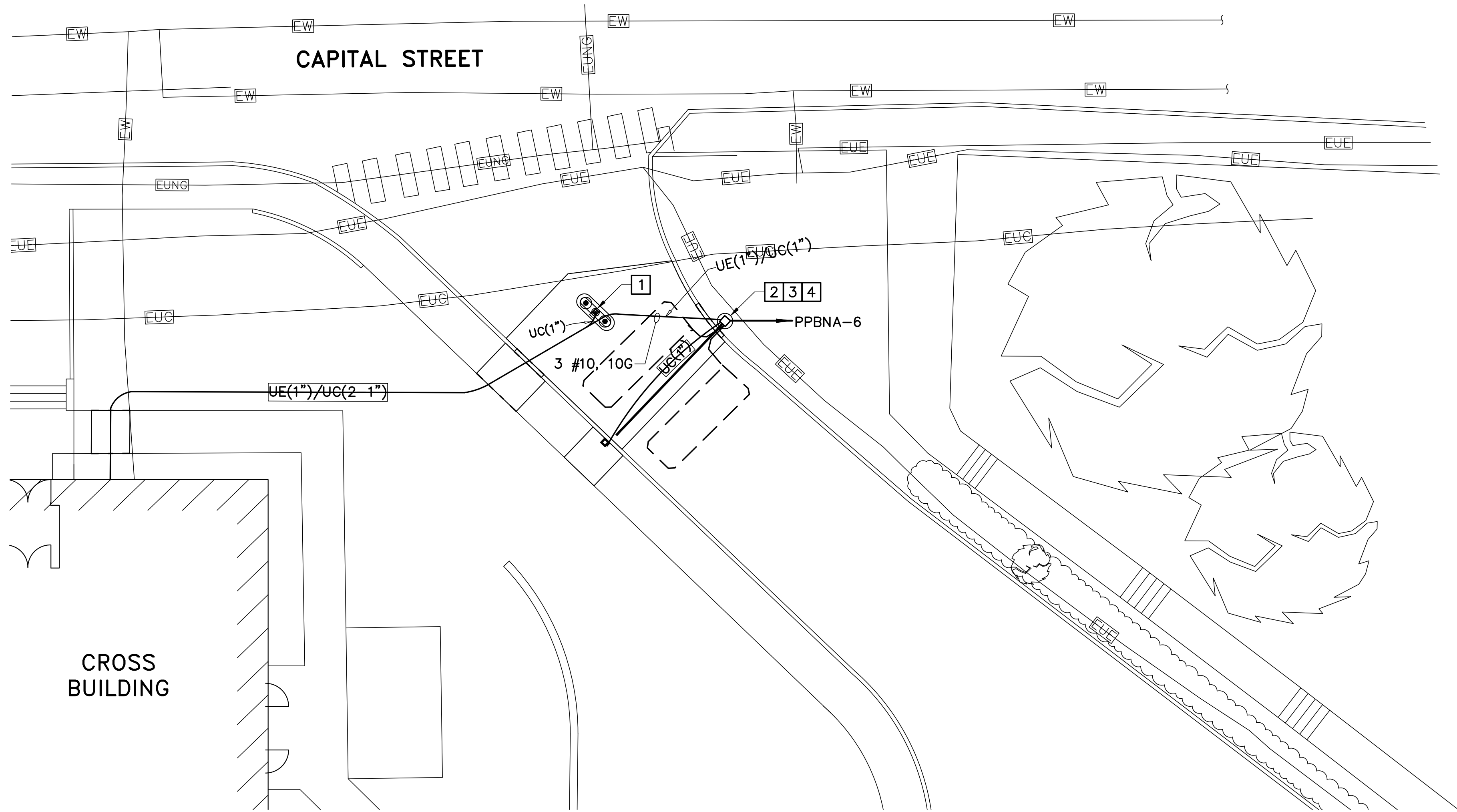
GRAPHIC SCALE

8' 4' 0 8' 16'

1/8" = 1'-0"

CHECK GRAPHIC SCALE BEFORE USING

[illegible]



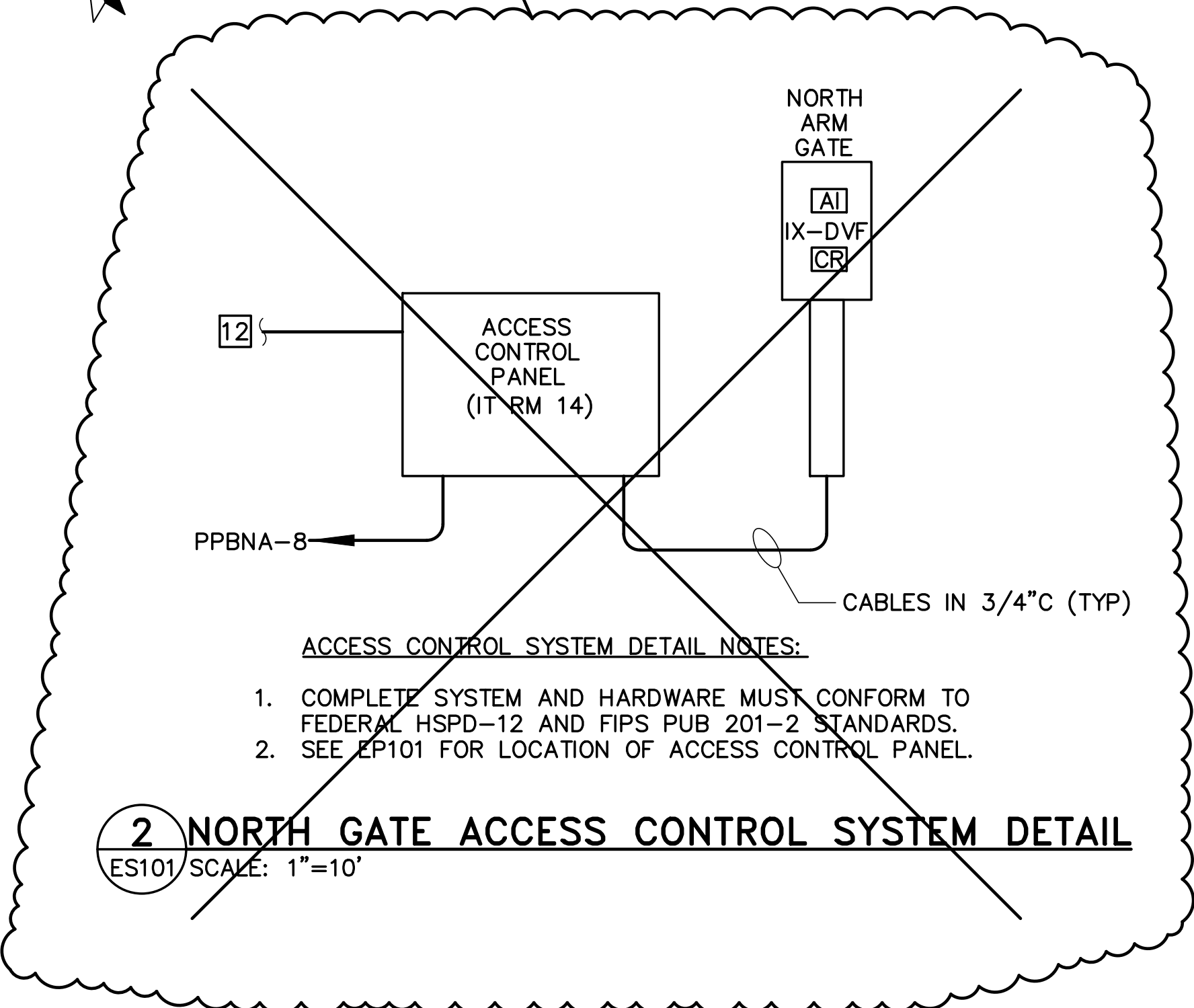
1 NORTH BARRIER ELECTRICAL SITE PLAN
ES101/SCALE: 1"=5'

GRID
NORTH

GENERAL NOTES (THIS SHEET ONLY)

1. SEE SHEET E-001 FOR ELECTRICAL SYMBOLS, ABBREVIATIONS, AND GENERAL NOTES.
2. PROVIDE PROGRAMMING OR CABLING TO ALERT SECURITY SYSTEM OF GATE RAISING AND LOWERING.
3. REFER TO ET103 FOR TYPICAL AIPHONE VIDEO INTERCOM DETAIL.

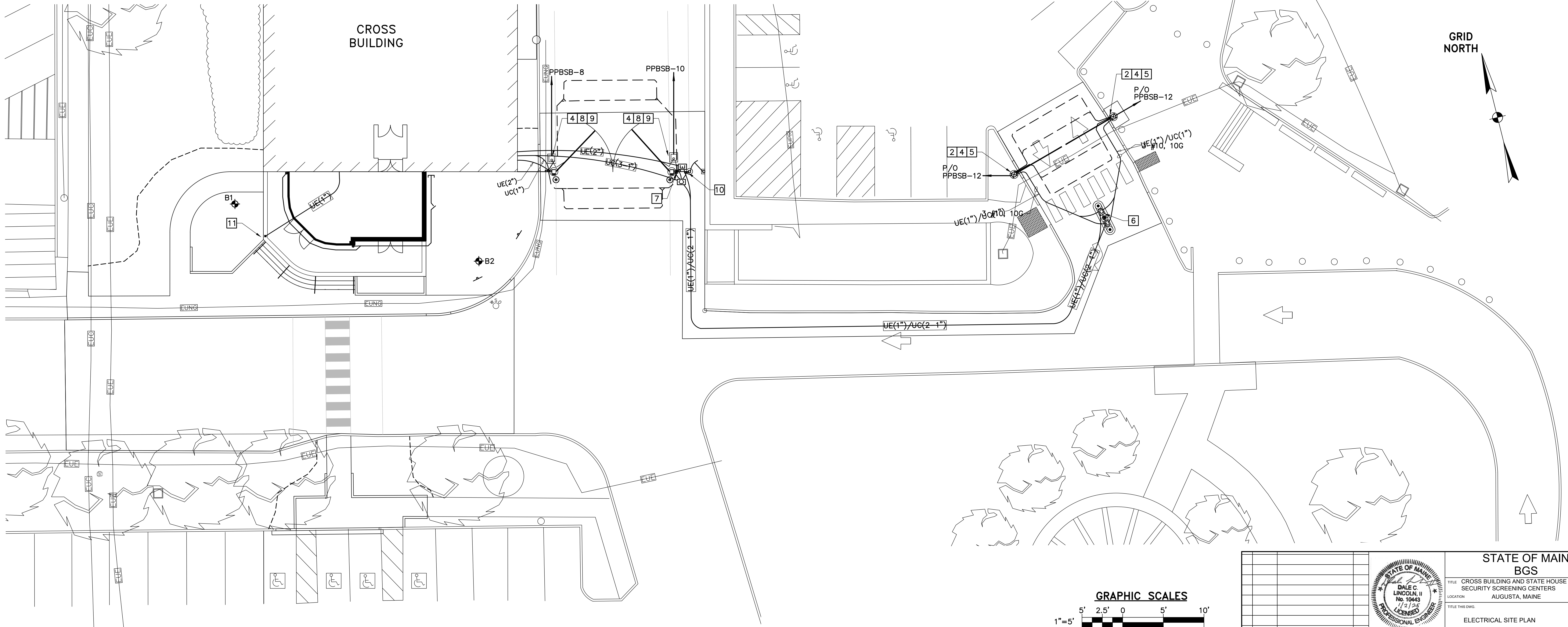
DELETE DETAIL 1



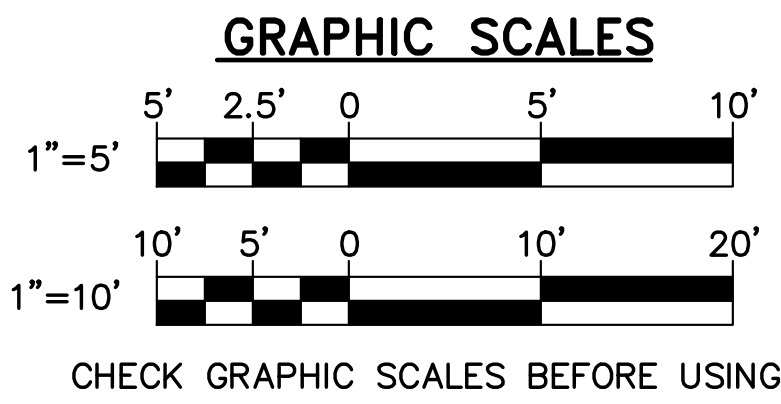
2 NORTH GATE ACCESS CONTROL SYSTEM DETAIL
ES101/SCALE: 1"=10'

KEYNOTES (THIS SHEET ONLY)

- 1 PROVIDE CARD READER, VIDEO INTERCOM, AND CAMERA IN NORTH GATE PEDESTAL FOR NORTH ARM GATE. PROVIDE CONDUIT AND CABLING TO IT ROOM IN THE BASEMENT OF THE CROSS BUILDING. REFER TO ET101 FOR IT ROOM LOCATION.
- 2 PROVIDE CONTROL CABLING AND CONDUIT TO ARM GATE FROM GATE PEDESTAL.
- 3 PROVIDE POWER TO NORTH ARM GATE. PROVIDE CONDUCTORS AND CONDUIT. REFER TO EP101 FOR PANELBOARD LOCATION INSIDE THE BASEMENT OF CROSS BUILDING.
- 4 PROVIDE GROUND ROD FOR GATE EQUIPMENT PER MANUFACTURER REQUIREMENTS.
- 5 PROVIDE POWER TO SOUTH ARM GATE. PROVIDE CONDUIT AND CONDUCTOR FROM CIRCUIT 12 IN PANELBOARD PPBSB. REFER TO EP102 FOR PANELBOARD LOCATION INSIDE THE BASEMENT OF CROSS BUILDING.
- 6 PROVIDE CARD READER, VIDEO INTERCOM, AND CAMERA IN SOUTH GATE PEDESTAL FOR SOUTH ARM GATE. PROVIDE CONDUIT AND CABLING TO ELEC/IT ROOM IN THE CROSS BUILDING. REFER TO ET102 FOR IT ROOM LOCATION.
- 7 PROVIDE LOADING DOCK SWING GATE OPERATING PANEL WITH VIDEO INTERCOM AND CAMERA. PROVIDE CABLING AND CONDUIT TO OPERATING PANEL BACK TO ELEC/IT ROOM IN THE CROSS BUILDING. REFER TO ET102 FOR EXACT ROOM LOCATION.
- 8 PROVIDE CONTROL CABLING AND CONDUIT TO LOADING DOCK SWITCH GATE EQUIPMENT FROM LOADING DOCK SWITCH GATE OPERATOR.
- 9 PROVIDE POWER TO LOADING DOCK SWING GATES. PROVIDE CONDUCTORS AND CONDUIT TO LOADING DOCK SWING GATES. REFER TO EP102 FOR PANELBOARD LOCATION.
- 10 PROVIDE PEDESTRIAN GATE OPERATING PANEL WITH CARD READER. PROVIDE CABLING AND CONDUIT FROM ELEC/IT ROOM TO OPERATOR. PROVIDE CABLING AND CONDUIT TO ELECTRIC STRIKE LOCATED AT PEDESTRIAN GATE. REFER TO ET102 FOR ELEC/IT ROOM LOCATION.
- 11 PROVIDE CARD READER AND ADA PUSHBUTTON IN BOLLARD. PROVIDE CABLING AND CONDUIT TO ELEC/IT ROOM. REFER TO ET102 FOR ELEC/IT ROOM LOCATIONS.
- 12 CONNECT TO EXISTING ACCESS CONTROL SYSTEM IN TELEPHONE CLOSE 141.



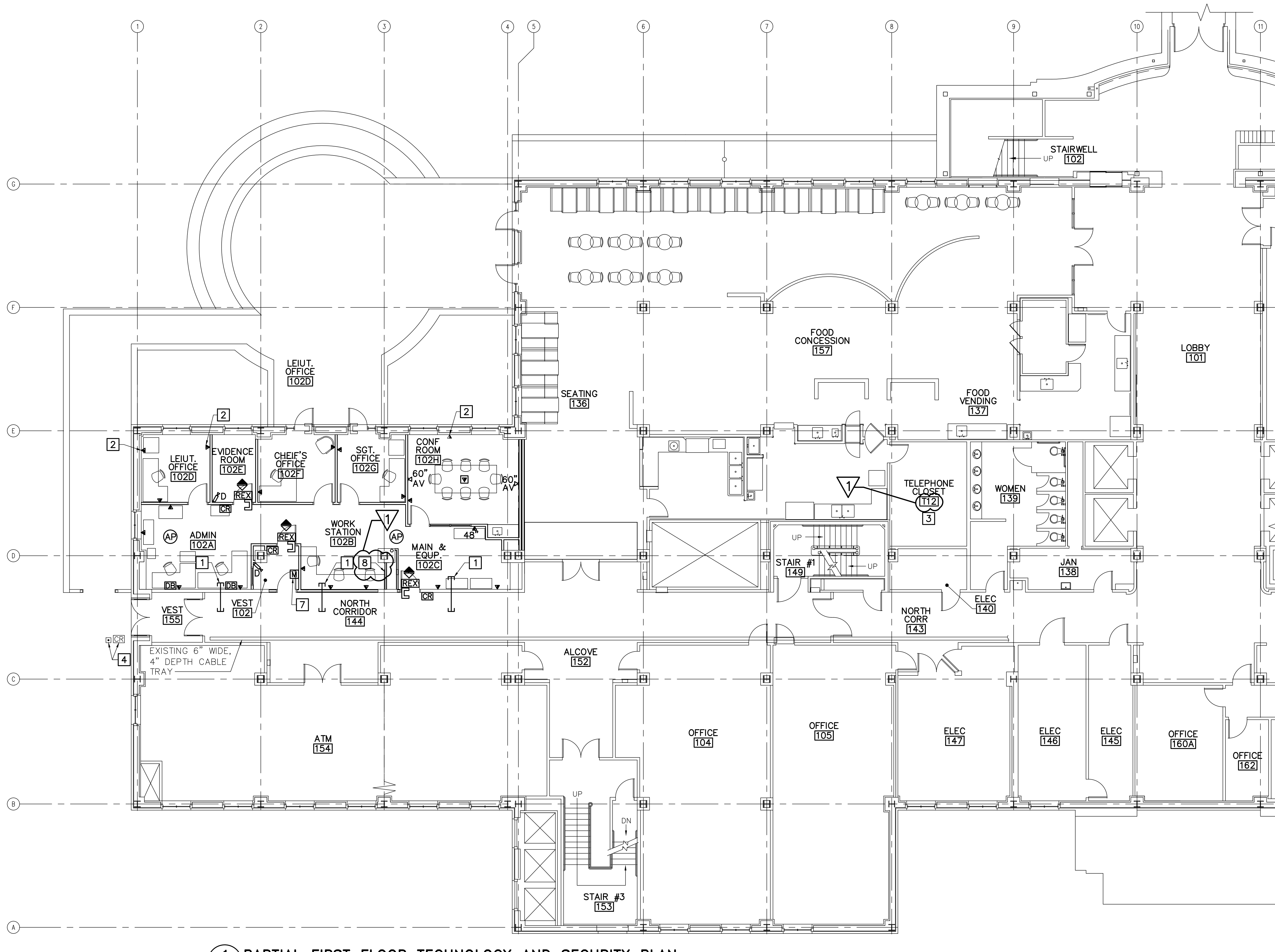
2 ELECTRICAL SITE PLAN
ES101/SCALE: 1"=10'



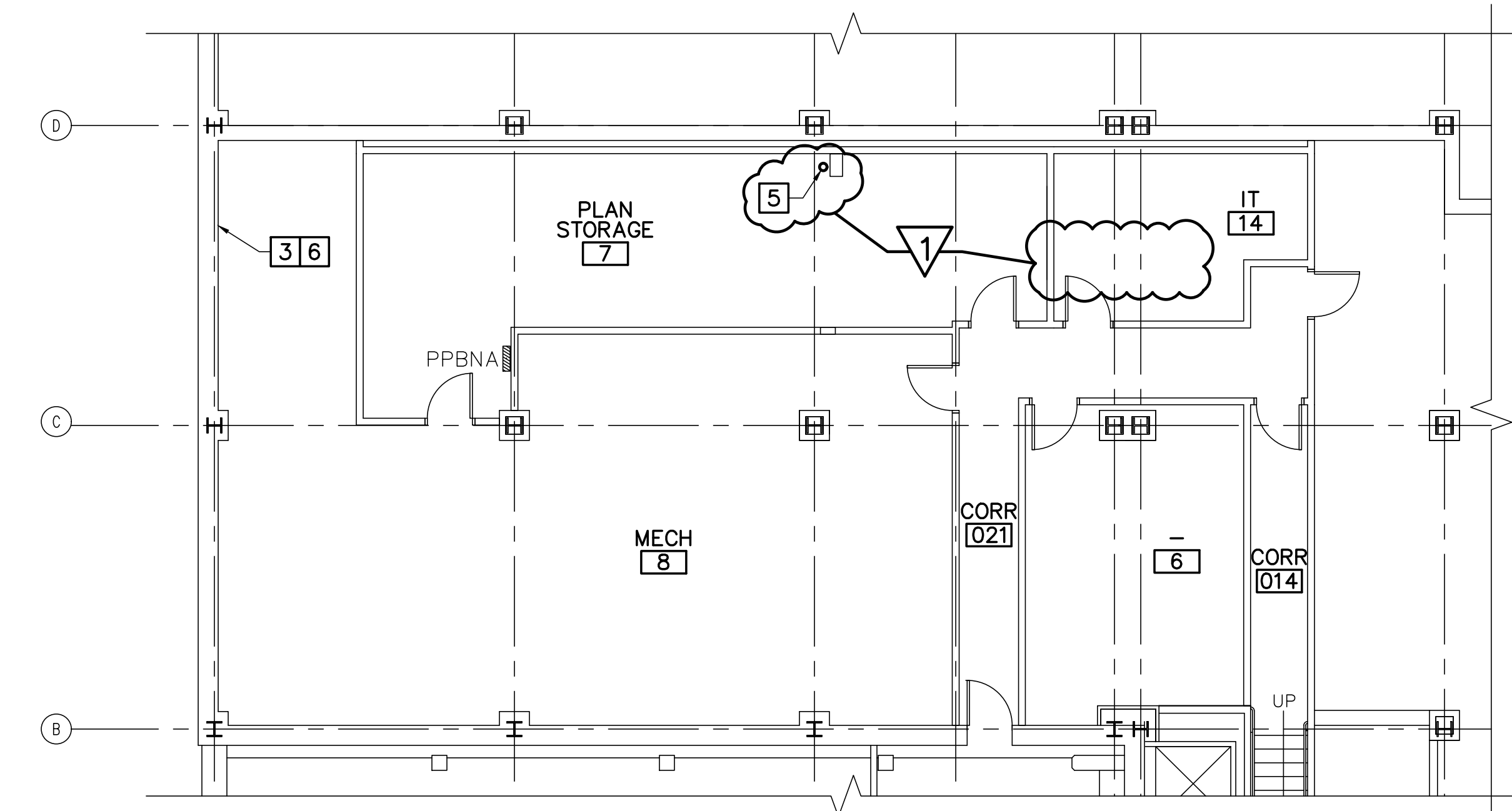
				STATE OF MAINE BGS	
				TITLE CROSS BUILDING AND STATE HOUSE SECURITY SCREENING CENTERS	
				LOCATION AUGUSTA, MAINE	
				ELECTRICAL SITE PLAN	
				OAK POINT ASSOCIATES	
				ES101	
				97 OF 110	

1	1/24/25	ADDENDUM NO. 3	DCL	DRAWN BY: RSW	
NO.	DATE	DESCRIPTION	BY	CHECK BY: DJD	
REVISIONS				NO. 22205.06	
				DATE 1/2/2025	

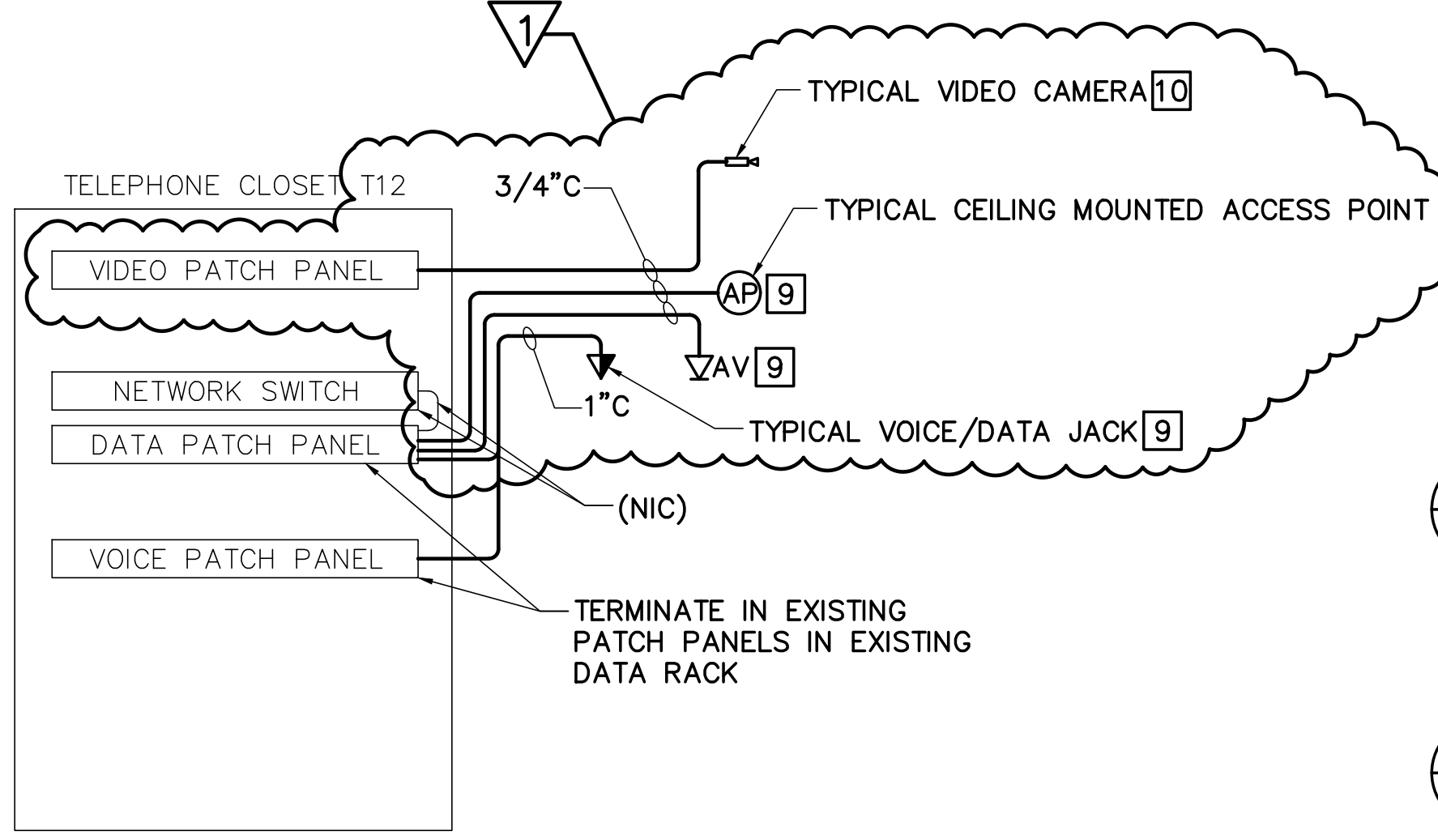
STATE OF MAINE DALE C. LINCOLN II No. 10443 1/1/15 LICENSED PROFESSIONAL ENGINEER	
231 Main Street, Bangor, Maine 04405	



1 PARTIAL FIRST FLOOR TECHNOLOGY AND SECURITY PLAN
ET101/SCALE: 1/8"=1'-0"



2 PARTIAL BASEMENT TECHNOLOGY PLAN
ET101/SCALE: 1/8"=1'-0"



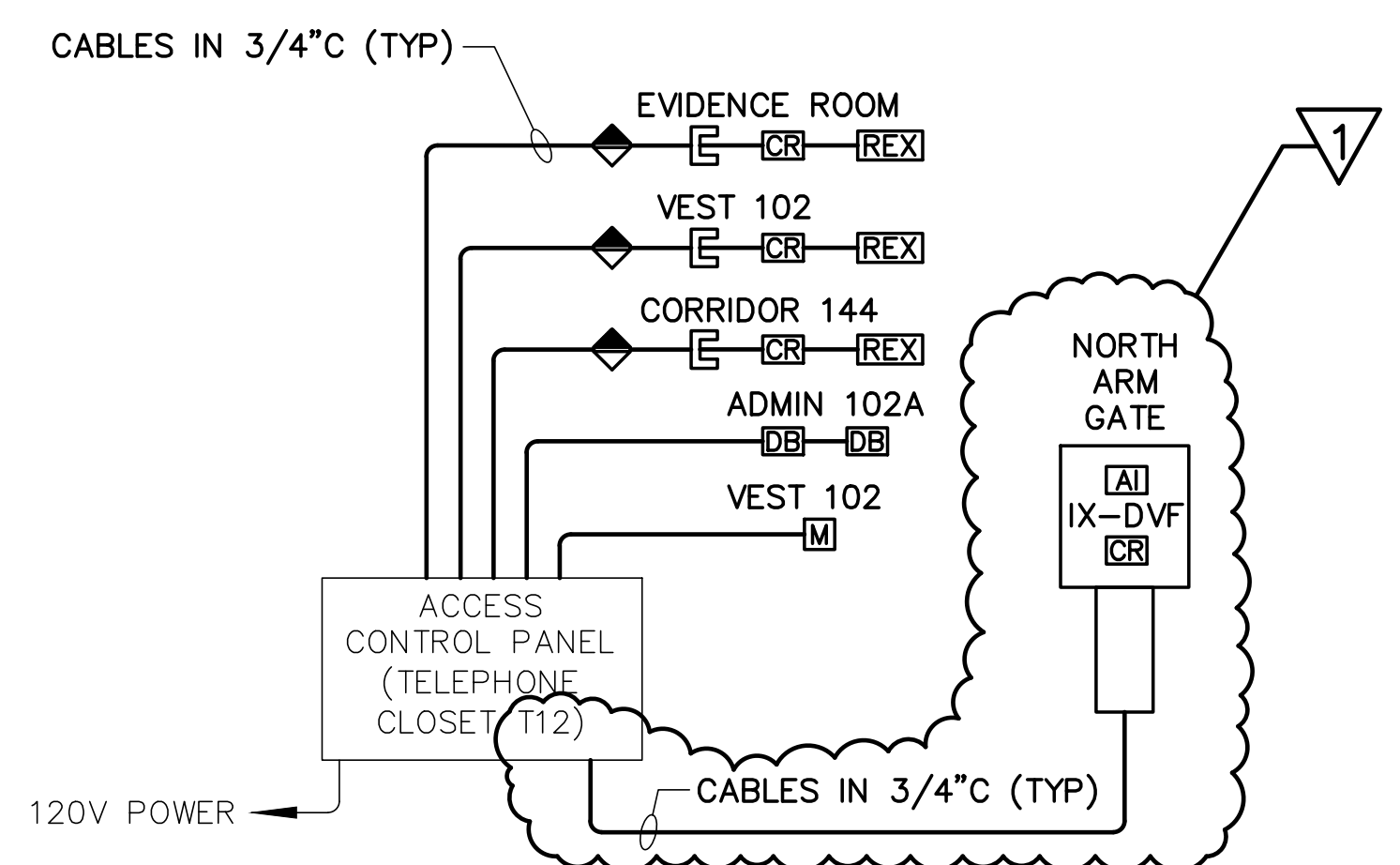
5 NORTH BUILDING COMMUNICATIONS ONE-LINE DIAGRAM
ET101/NOT TO SCALE

GENERAL NOTES

- SEE SHEET E-001 FOR ELECTRICAL SYMBOLS, ABBREVIATIONS, AND GENERAL NOTES.
- PROVIDE CARD READERS AND MAGNETIC DOOR CONTACTS AND CONNECT TO EXISTING ACCESS CONTROL SYSTEM.
- PROVIDE SECURITY CABLING BACK TO TELEPHONE CLOSET T12.
- PROVIDE POE INJECTORS FOR CAMERAS OVER 30W. POE INJECTORS MUST SUPPORT 100MBPS. A POE BANK SUCH AS ALTRONIX NETWAY8G OR 16G IS ACCEPTABLE.
- COORDINATE FINAL CAMERA LOCATIONS WITH STATE OF MAINE SECURITY PERSONNEL. AIM AND FOCUS CAMERAS AS DIRECTED BY STATE OF MAINE SECURITY PERSONNEL.
- PROVIDE CAMERA MOUNTING HARDWARE, ENCLOSURE AND ACCESSORIES FOR A COMPLETE AND FUNCTIONAL INSTALLATION.

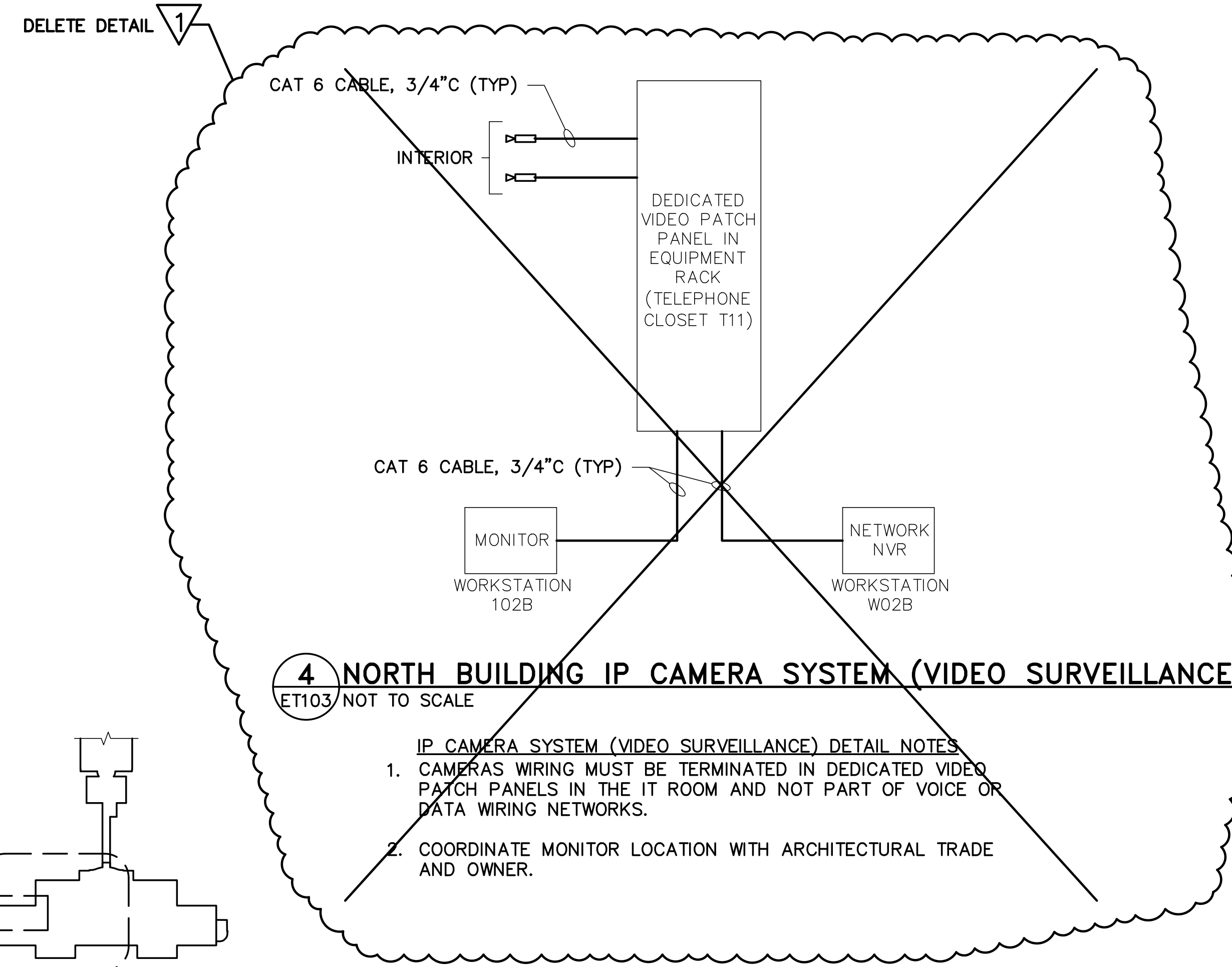
KEYNOTES (THIS SHEET ONLY)

- PROVIDE 2" CONDUIT ABOVE CEILING TO THE EXISTING TELECOMMUNICATIONS TRAY.
- PROVIDE COMMUNICATION OUTLET BOX. REUSE EXISTING CONDUIT.
- PROVIDE COMMUNICATION AND CONTROL CABLES FOR NORTH EXTERIOR ELECTRIC ARM GATE. REFER TO ES101 DETAIL 1 FOR NORTH EXTERIOR GATE LOCATIONS.
- EXISTING CARD READER AND PUSH BUTTON TO REMAIN IN PLACE, DEVICES LOCATED ON HANDRAIL.
- PROVIDE FLOOR PENETRATION FOR NORTH EXTERIOR ARM GATE COMMUNICATION CABLES AND CONDUIT.
- CONDUIT AND CABLES FOR NORTH GATE TO PENETRATE BUILDING AT THIS LOCATION. COORDINATE WITH CIVIL TRADE FOR EXACT LOCATION OF PENETRATION. REFER TO ES101 FOR CONDUIT AND GATE LOCATION.
- PROVIDE CONNECTION TO FIRE ALARM SYSTEMS FOR ELECTROMAGNETIC DOOR HOLDER.
- FLOOR PENETRATION TO BASEMENT LEVEL, REFER TO KEYNOTE 5 ABOVE. PROVIDE CONDUIT IN THE WALL TO CEILING FOR NORTH EXTERIOR ARM GATE COMMUNICATION CABLES.
- PROVIDE BOX, CONDUIT AND PATHWAYS, CABLES, JACKS, ACCESS POINTS AND FACEPLATES PROVIDED BY SOM LAN.
- PROVIDE CAMERA AND 3/4" CONDUIT. CABLE PROVIDED BY SOM LAN.



3 NORTH BLDG ACCESS CONTROL SYSTEM
ET501/NOT TO SCALE

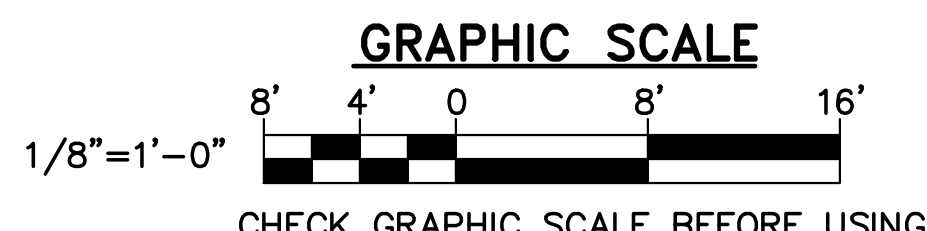
- ACCESS CONTROL SYSTEM DETAIL NOTES:**
- COMPLETE SYSTEM AND HARDWARE MUST CONFORM TO FEDERAL HSPD-12 STANDARDS.



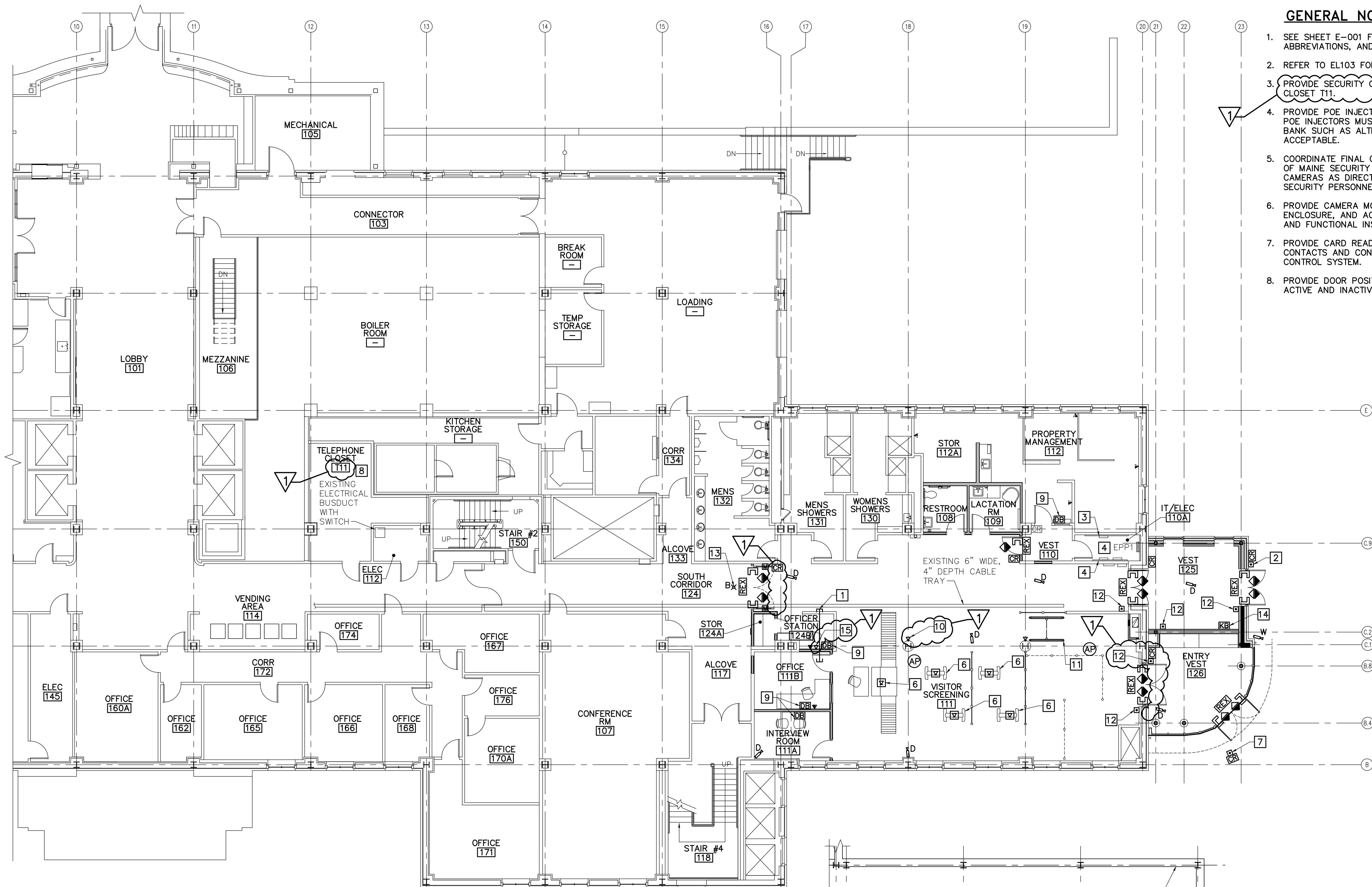
4 NORTH BUILDING IP CAMERA SYSTEM (VIDEO SURVEILLANCE)
ET103/NOT TO SCALE

- IP CAMERA SYSTEM (VIDEO SURVEILLANCE) DETAIL NOTES:**
- CAMERAS WIRING MUST BE TERMINATED IN DEDICATED VIDEO PATCH PANELS IN THE IT ROOM AND NOT PART OF VOICE OR DATA WIRING NETWORKS.
 - COORDINATE MONITOR LOCATION WITH ARCHITECTURAL TRADE AND OWNER.

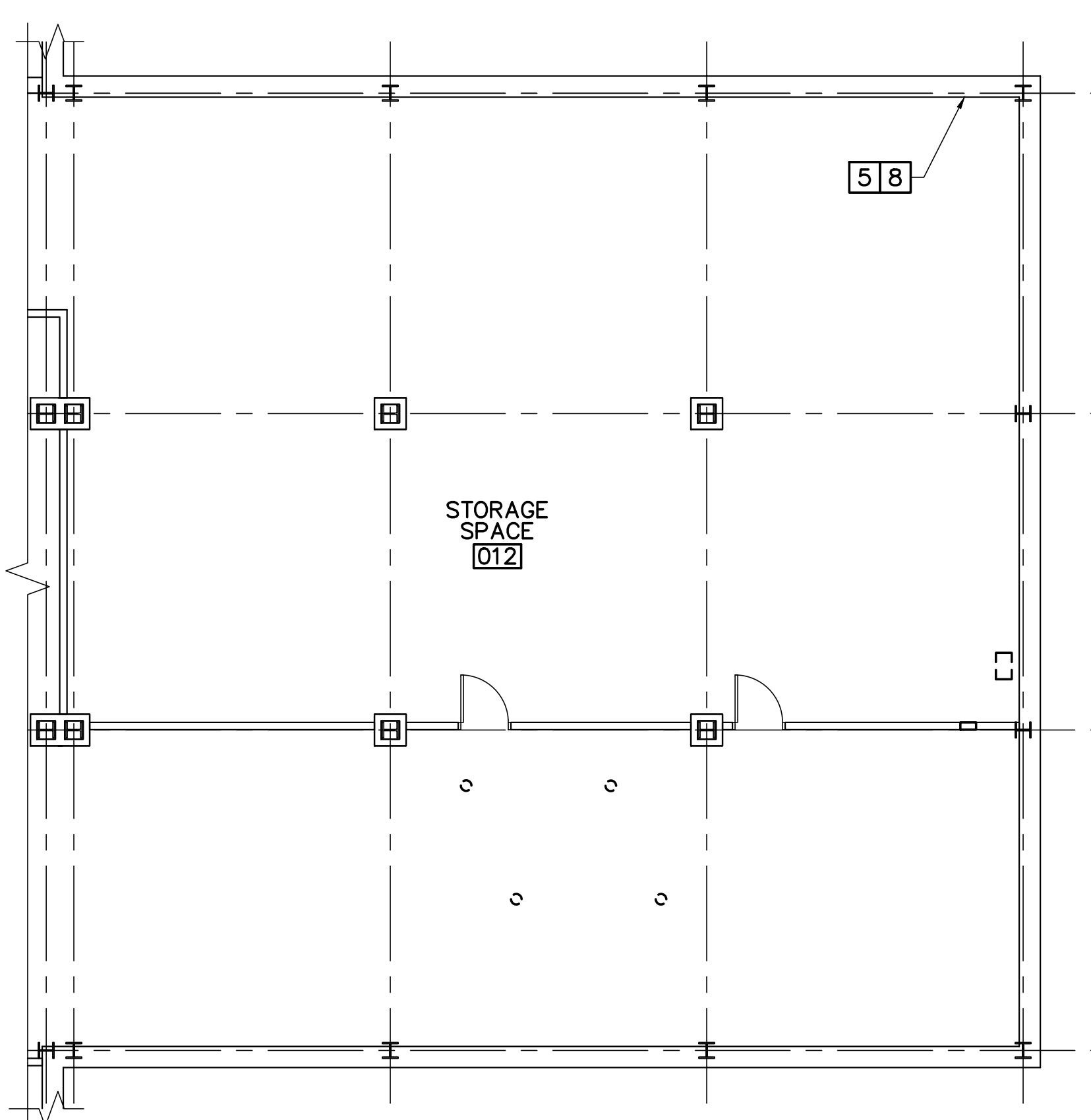
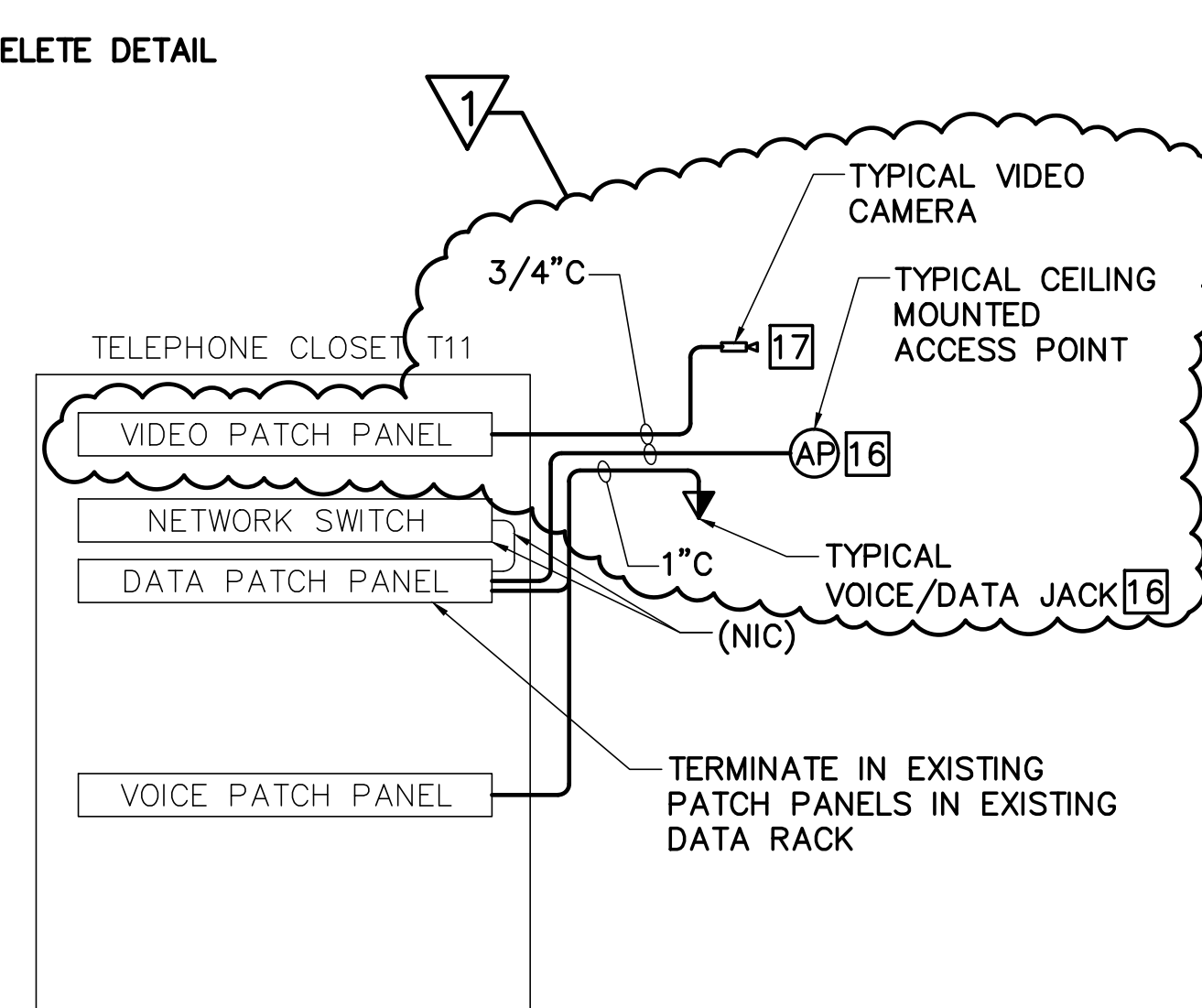
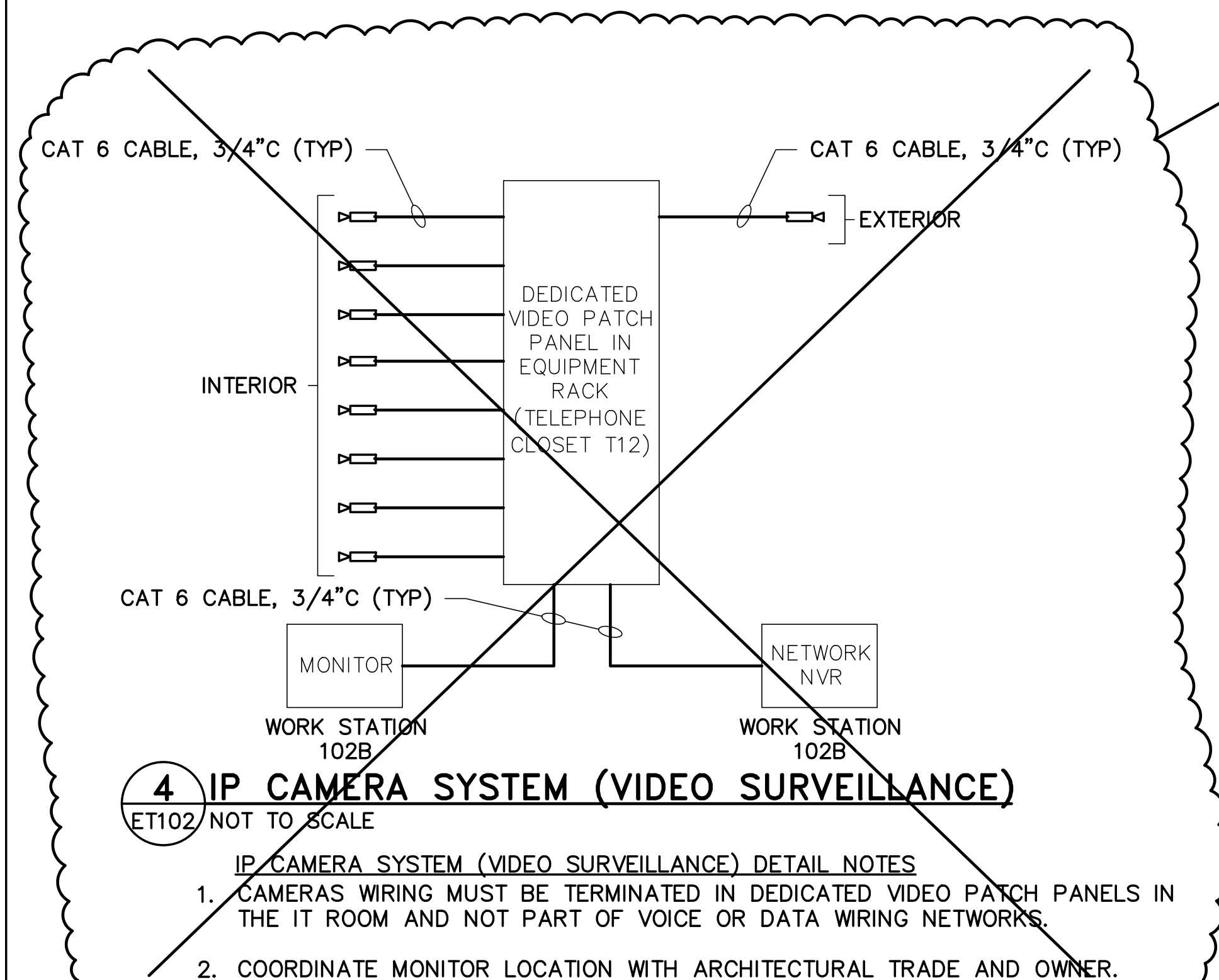
KEY PLAN
NOT TO SCALE
PLAN NORTH



STATE OF MAINE BGS				STATE OF MAINE BGS			
TITLE: CROSS BUILDING AND STATE HOUSE SECURITY SCREENING CENTERS				TITLE: CROSS BUILDING AND STATE HOUSE SECURITY SCREENING CENTERS			
LOCATION: AUGUSTA, MAINE				LOCATION: AUGUSTA, MAINE			
PARTIAL FIRST FLOOR TECHNOLOGY AND SECURITY PLANS 1 AND DETAILS				PARTIAL FIRST FLOOR TECHNOLOGY AND SECURITY PLANS 1 AND DETAILS			
OAK POINT ASSOCIATES				OAK POINT ASSOCIATES			
DRAWING NO. ET101				DRAWING NO. ET101			
SHEET NO. 107 OF 110				SHEET NO. 107 OF 110			



1 PARTIAL FIRST FLOOR TECHNOLOGY AND SECURITY PLAN
ET102/SCALE: 1/8"=1'-0"



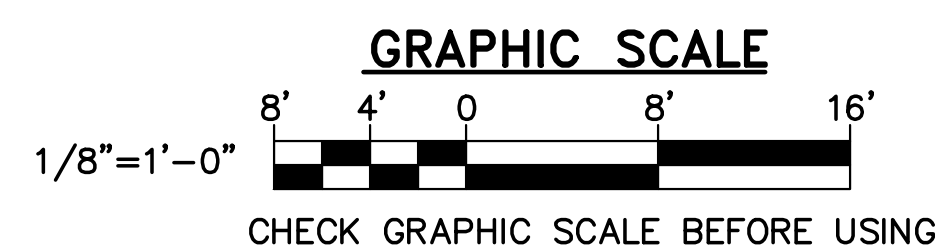
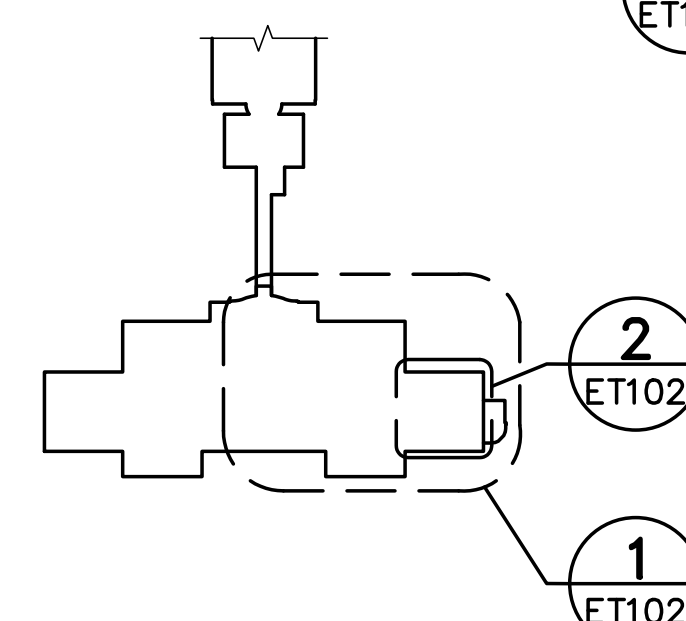
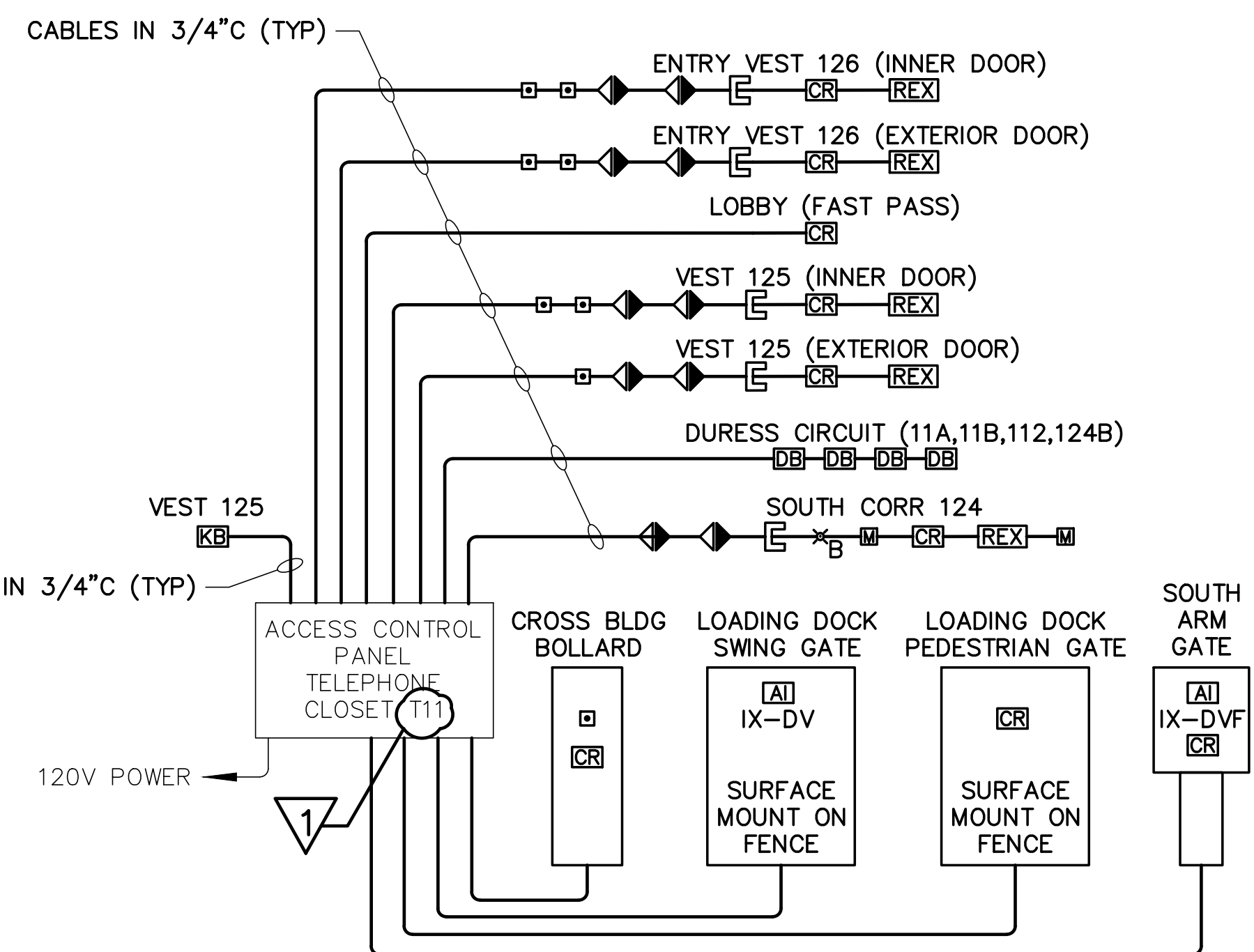
2 PARTIAL BASEMENT TECHNOLOGY PLAN
ET102/SCALE: 1/8"=1'-0"

GENERAL NOTES

- SEE SHEET E-001 FOR ELECTRICAL SYMBOLS, ABBREVIATIONS, AND GENERAL NOTES.
- REFER TO EL103 FOR TYPICAL AIPHONE DETAIL.
- PROVIDE SECURITY CABLING BACK TO TELEPHONE CLOSET T11.
- PROVIDE POE INJECTORS FOR CAMERAS OVER 30W. POE INJECTORS MUST SUPPORT 100MBPS. A POE BANK SUCH AS ALTRONIX NETWAYBG OR 16G IS ACCEPTABLE.
- COORDINATE FINAL CAMERA LOCATION WITH STATE OF MAINE SECURITY PERSONNEL. AIM AND FOCUS CAMERAS AS DIRECTED BY STATE OF MAINE SECURITY PERSONNEL.
- PROVIDE CAMERA MOUNTING HARDWARE, ENCLOSURE, AND ACCESSORIES FOR A COMPLETE AND FUNCTIONAL INSTALLATION.
- PROVIDE CARD READERS AND MAGNETIC DOOR CONTACTS AND CONNECT TO EXISTING ACCESS CONTROL SYSTEM.
- PROVIDE DOOR POSITION SWITCH FOR EACH LEAF, ACTIVE AND INACTIVE.

KEYNOTES (THIS SHEET ONLY)

- PROVIDE 1-1/2" CONDUIT ABOVE CEILING TO THE TELECOMMUNICATIONS TRAY.
- INSTALL ADA PUSHBUTTON ELECTRICAL BOX AND CONDUIT FOR FUTURE USE. PROVIDE BLANK STAINLESS STEEL FACEPLATE.
- EXISTING COMMUNICATION BACKBOARD WITH NETWORK SWITCH AND UPS. EXISTING EQUIPMENT TO REMAIN.
- EXISTING COMMUNICATION BACKBOARD WITH TELEPHONE PATCH PANEL, NETWORK SWITCH, AND A FIBER OPTIC PATCH PANEL. EXISTING EQUIPMENT TO REMAIN.
- PROVIDE COMMUNICATION CABLES FOR SOUTH EXTERIOR ELECTRIC ARM GATE. REFER TO ES101 DETAIL 2 FOR NORTH EXTERIOR GATE LOCATIONS.
- PROVIDE FLOOR BOX COMMUNICATION OUTLET FOR SECURITY SCREENING EQUIPMENT. COORDINATE EXACT LOCATION WITH ARCHITECTURAL TRADE PRIOR TO INSTALLATION. REFER TO ET103 FOR SECURITY SCREENING WIRING DIAGRAM.
- PROVIDE CABLING AND CONDUIT TO ADA PUSH BUTTON PEDESTAL. COORDINATE EXACT LOCATION OF PUSH BUTTON WITH ARCHITECTURAL AND CIVIL TRADE PRIOR TO INSTALLATION.
- PROVIDE COMMUNICATION AND CONTROL CABLING TO LOADING DOCK SECURITY GATE AND SOUTH EXTERIOR ELECTRIC ARM GATE. REFER TO ES101 FOR GATE LOCATIONS AND COMMUNICATION CONDUIT PATHS.
- PROVIDE PANIC/DURESS BUTTON UNDER SECURITY MONITORING DESK. COORDINATE EXACT LOCATION WITH STATE OF MAINE SECURITY PERSONNEL PRIOR TO INSTALLATION. PROVIDE PROGRAMMING TO CLOSE AND LOCK SOUTH CORRIDOR WHEN PUSH BUTTON IS ACTIVATED.
- PROVIDE TABLET STAND FOR THE SECURITY SCREENING EQUIPMENT. REFER TO ET103 FOR SECURITY SCREENING WIRING DIAGRAM.
- TURNSTILE EQUIPMENT TO HAVE CAPABILITY TO TIE INTO EXISTING ACCESS CONTROL. PROVIDE CONNECTION TO EXISTING ACCESS CONTROL TO PROVIDE USE OF EXISTING CARDS FOR THE CROSS BUILDING.
- ADA PUSHBUTTON FOR DOOR OPERATOR. REFER TO EP102 FOR ELECTRICAL POWER INFORMATION.
- PROVIDE BLUE EMERGENCY STROBE LIGHT. STROBE LIGHT MUST BE PROGRAMMED TO ACTIVATE WHEN THE PANIC/PUSHBUTTON HAS BEEN PRESSED.
- PROVIDE CABLING AND CONDUIT TO KNOX BOX TAMPER SWITCH. PROVIDE CONNECTION TO EXISTING FIRE ALARM SYSTEM AND ACCESS CONTROL SYSTEM.
- PROVIDE A DEDICATED NETWORK JACK FOR SECURITY SCREENING EQUIPMENT SWITCH. REFER TO ET103 FOR SECURITY SCREENING WIRING DIAGRAM.
- PROVIDE BOX, CONDUIT AND PATHWAYS, CABLES, JACKS, ACCESS POINTS AND FACEPLATES PROVIDED BY SOM LAN.
- PROVIDE CAMERA AND 3/4" CONDUIT. CABLE PROVIDED BY SOM LAN.



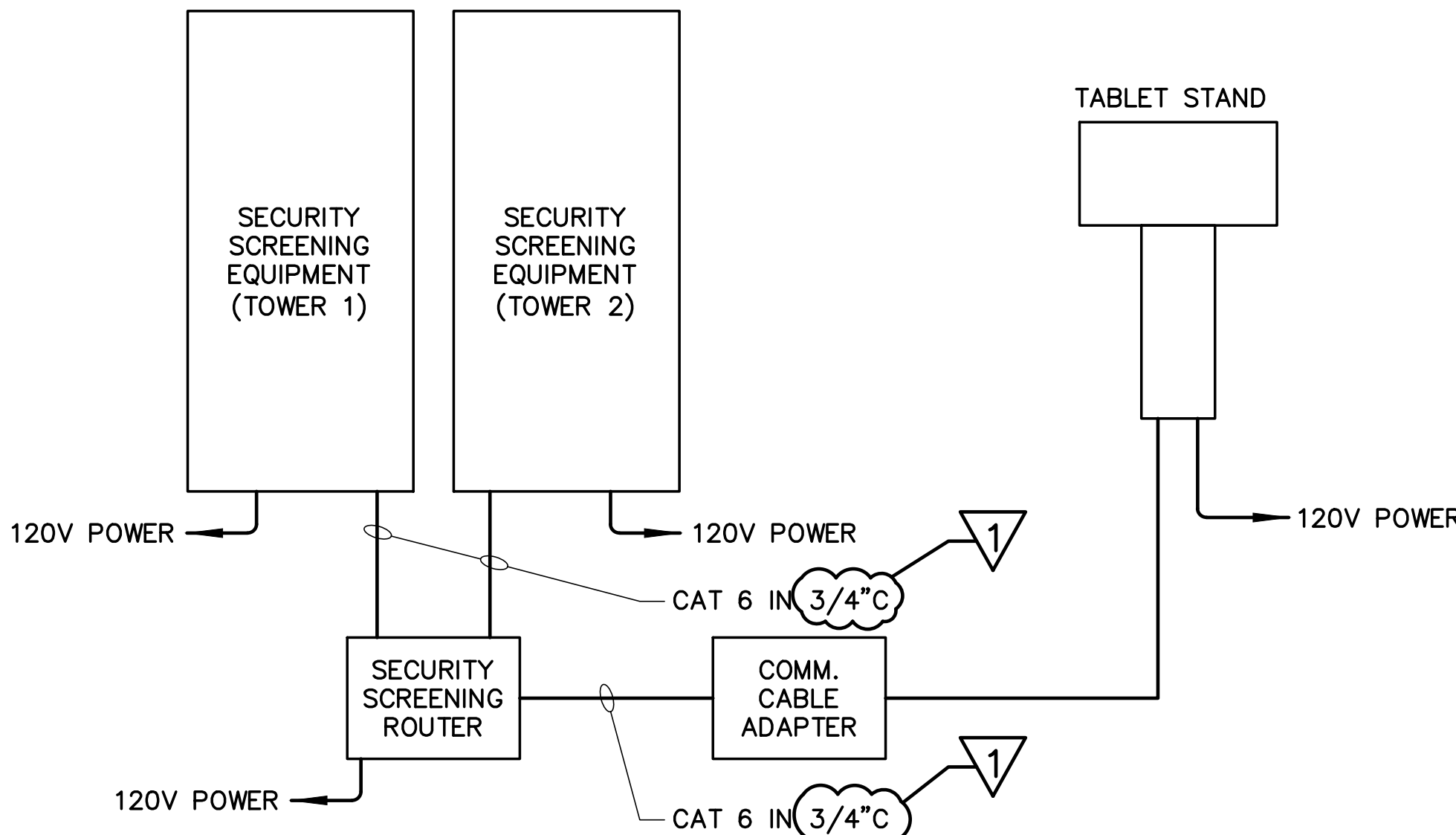
<div> <div> <div>STATE OF MAINE</div> <div>BGS</div> </div> <div> <div>TITLE</div> <div>CROSS BUILDING AND STATE HOUSE SECURITY SCREENING CENTERS</div> </div> <div> <div>LOCATION</div> <div>AUGUSTA, MAINE</div> </div> <div> <div>TITLE THIS DWG</div> <div>PARTIAL FIRST FLOOR TECHNOLOGY AND SECURITY PLANS 2 AND DETAILS</div> </div> </div>				<div> <div> <div>DALE C LINCOLN II</div> <div>No. 10443</div> <div>1/2/25</div> <div>PROFESSIONAL ENGINEER</div> </div> <div> <div>207.850.0193</div> <div>207.850.0193</div> </div> </div>	
<div> <div> <div>1</div> <div>1/24/25</div> <div>ADDENDUM NO. 3</div> <div>DCL</div> </div> <div> <div>NO.</div> <div>DATE</div> <div>DESCRIPTION</div> <div>BY</div> </div> </div>				<div> <div> <div>DRAWN BY:</div> <div>BPD</div> </div> <div> <div>CHECK BY:</div> <div>-</div> </div> </div>	
<div> <div> <div>REVISIONS</div> <div>NO.</div> <div>DATE</div> </div> <div> <div>22205.06</div> <div>1/2/2025</div> </div> </div>				<div> <div> <div>227.850.0193</div> <div>207.850.0193</div> </div> <div> <div>108</div> <div>of 110</div> </div> </div>	

GENERAL NOTES

- SEE SHEET E-001 FOR ELECTRICAL SYMBOLS, ABBREVIATIONS, AND GENERAL NOTES.
- PROVIDE CONDUIT BACK TO TELE/COMM ROOM 119. COMPUTER ROOM IS LOCATED ON THE EAST SIDE OF THE STATE HOUSE BUILDING ON THE FIRST FLOOR.
- PROVIDE POE INJECTORS FOR CAMERAS OVER 30W. POE INJECTORS MUST SUPPORT 100MBPS. A POE BANK SUCH AS ALTRONIX NETWAY8G OR 16G IS ACCEPTABLE.
- COORDINATE FINAL CAMERA LOCATION WITH STATE OF MAINE SECURITY PERSONNEL. AIM AND FOCUS CAMERAS AS DIRECTED BY STATE OF MAINE SECURITY PERSONNEL.
- PROVIDE CAMERA MOUNTING HARDWARE, ENCLOSURE, AND ACCESSORIES FOR A COMPLETE AND FUNCTIONAL INSTALLATION.
- PROVIDE DOOR POSITION SWITCH FOR EACH LEAF, ACTIVE AND INACTIVE.

KEYNOTES (THIS SHEET ONLY)

- TURNSTILE EQUIPMENT TO HAVE CAPABILITY TO TIE INTO EXISTING ACCESS CONTROL. PROVIDE CONNECTION TO EXISTING ACCESS CONTROL TO PROVIDE USE OF EXISTING CARDS FOR THE STATE HOUSE.
- PROVIDE DEDICATED DATA OUTLET FOR FAST PASS LANE EQUIPMENT. PROVIDE CABLE AND CONDUIT BACK TO COMPUTER ROOM 115.
- PROVIDE DEDICATED DATA OUTLET FOR SECURITY SCREENING EQUIPMENT. PROVIDE CABLE AND CONDUIT BACK TO COMPUTER ROOM 115.
- PROVIDE DEDICATED DATA OUTLET FOR SECURITY XRAY EQUIPMENT. PROVIDE CABLE AND CONDUIT BACK TO COMPUTER ROOM 115.
- INSTALL SALVAGED SPEAKER DEVICE AND CONNECT TO EXISTING CABLE.
- INSTALL SALVAGED FIRE ALARM PULL STATION AND SPEAKER/STROBE. CONNECT TO EXISTING FIRE ALARM SYSTEM.
- CONNECT EXISTING ADA PUSHBUTTON TO DOOR OPERATOR.
- PROVIDE CARD READER AND CABLING. INSTALL CARD READER IN EXISTING ELECTRICAL BOX. PROVIDE CONNECTION TO EXISTING ACCESS CONTROL SYSTEM.
- INSTALL SALVAGED ADA PUSHBUTTON AND CONNECT TO DOOR OPERATOR.
- PROVIDE A DEDICATED NETWORK PORT IN OUTLET FOR SECURITY SCREENING EQUIPMENT SWITCH. REFER TO ET103 FOR SECURITY SCREENING WIRING DIAGRAM.
- PROVIDE BOX, CONDUIT AND PATHWAYS. CABLES, JACKS, ACCESS POINTS AND FACEPLATES PROVIDED BY SOM LAN.
- PROVIDE CAMERA AND 3/4" CONDUIT. CABLE PROVIDED BY SOM LAN.

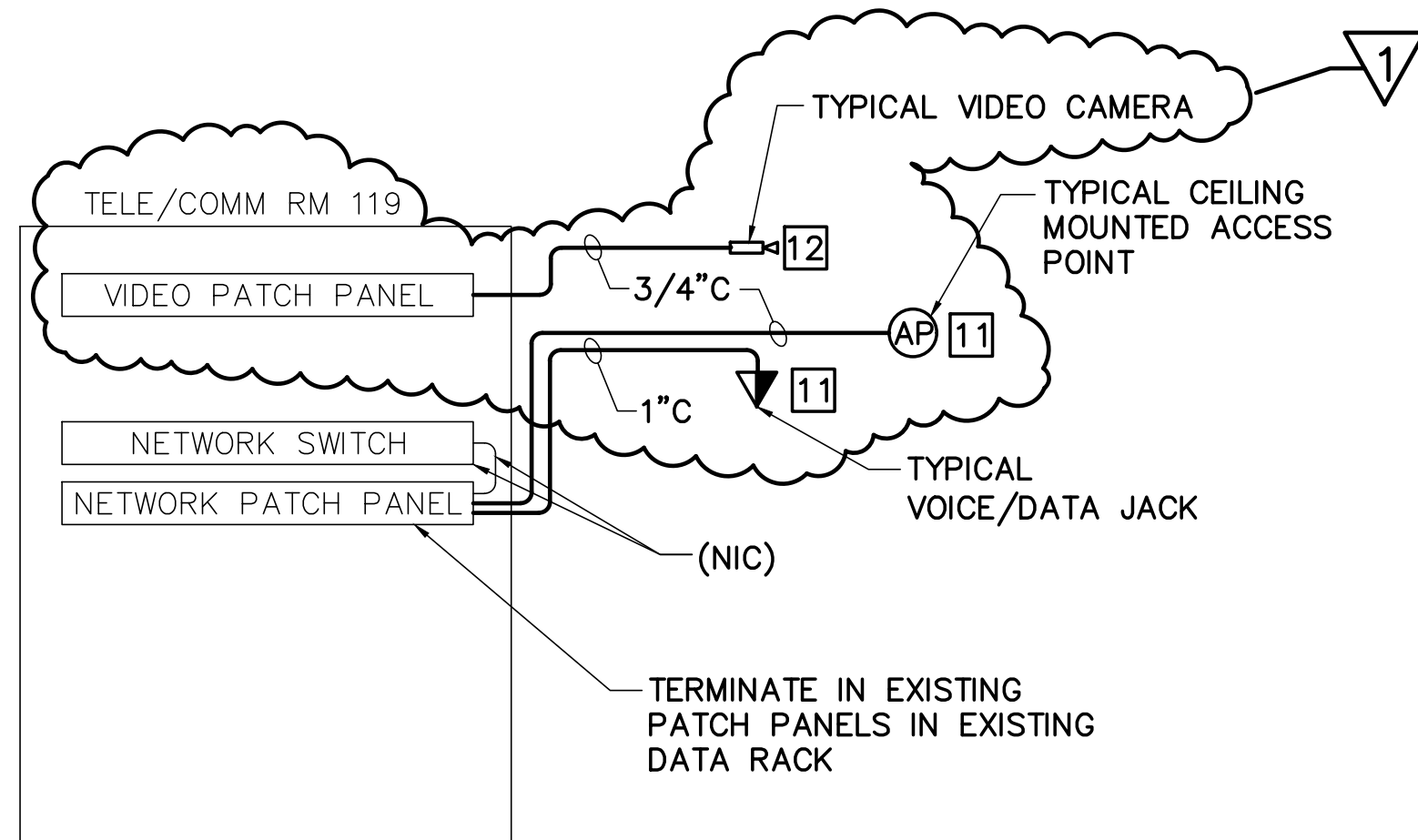


5 TYPICAL SECURITY SCREENING SYSTEM

ET103/NOT TO SCALE

TYPICAL SECURITY SCREENING SYSTEM DETAIL NOTES:

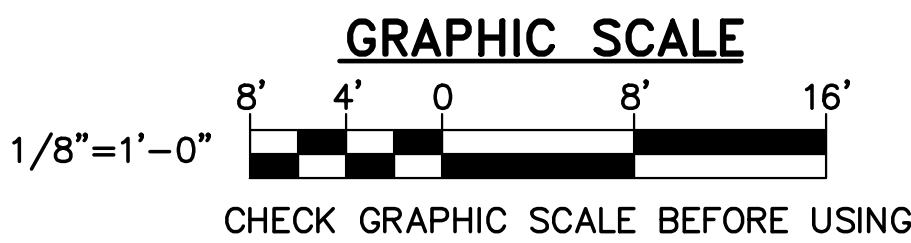
- PROVIDE DEDICATED POWER TO EACH SECURITY SCREENING TOWER.
- PROVIDE DEVICES, CONDUIT, CONDUCTORS, CABLING, AND MISCELLANEOUS PARTS AND PIECES FOR A COMPLETE AND FUNCTIONAL SECURITY SCREENING SYSTEM.
- TOWER WIRING AND TABLET STAND MUST BE TERMINATED IN DEDICATED ROUTER PROVIDED BY SECURITY EQUIPMENT COMPANY.
- PROVIDE SECURITY SCREENING SYSTEM FOR VISITOR SCREENING 111 AND SECURITY SCREENING 139.
- CABLING FOR SECURITY SCREENING SYSTEM MUST HAVE A GREEN COLORED JACKET.



STATE HOUSE

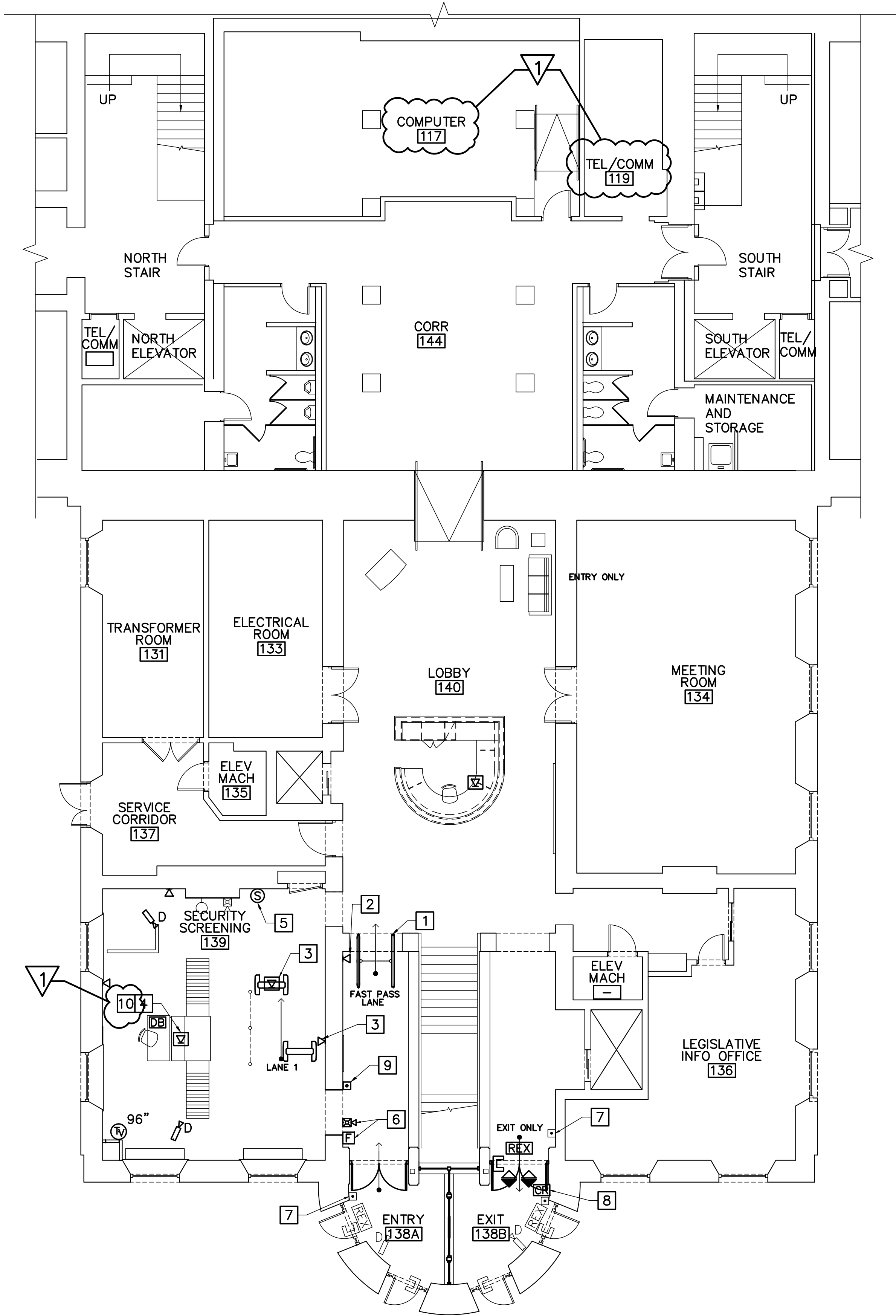
6 COMMUNICATIONS ONE-LINE DIAGRAM

ET103/NOT TO SCALE



KEY PLAN
NOT TO SCALE
PLAN NORTH

STATE OF MAINE BGS			
TITLE CROSS BUILDING AND STATE HOUSE SECURITY SCREENING CENTERS			
LOCATION AUGUSTA, MAINE			
TITLE THIS DWG. STATE HOUSE- PARTIAL FIRST FLOOR TECHNOLOGY PLANS AND DETAILS			
OAK POINT ASSOCIATES			
ET103			
NO. 1 1/24/25			
ADDENDUM NO. 3			
DCL			
DRAWN BY: BPD			
CHECK BY: DCL			
NO. 22205.06			
DATE 1/2/2025			
207.850 (1/19)			
109 OF 110			



1 STATE HOUSE - PARTIAL FIRST FLOOR TECHNOLOGY PLAN

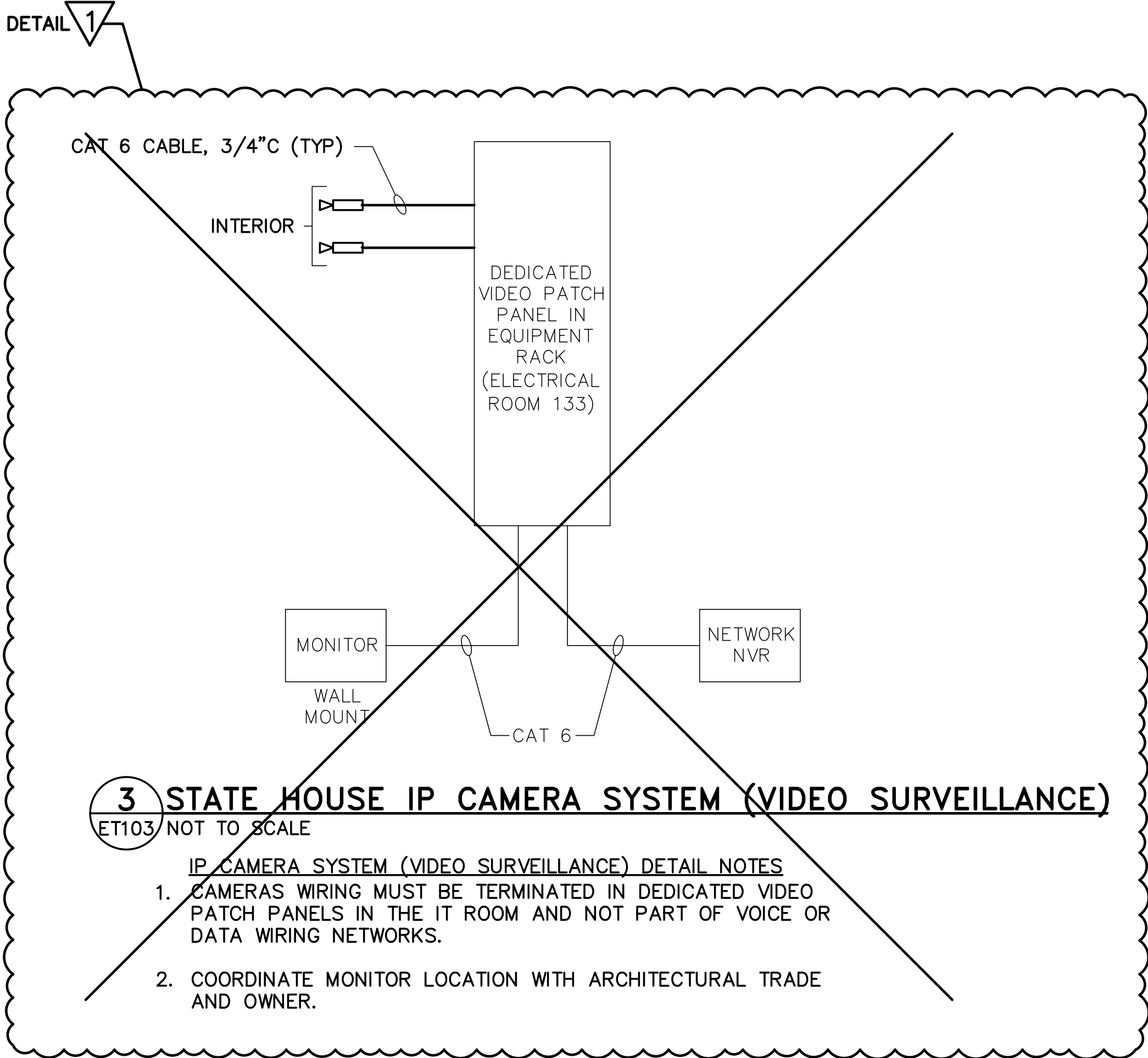
ET103/ SCALE: 1/8"=1'-0"

2 STATE HOUSE ACCESS CONTROL SYSTEM

ET103/NOT TO SCALE

ACCESS CONTROL SYSTEM DETAIL NOTES:

- COMPLETE SYSTEM AND HARDWARE MUST CONFORM TO FEDERAL HSPD-12 AND FIPS PUB 201-2 STANDARDS.

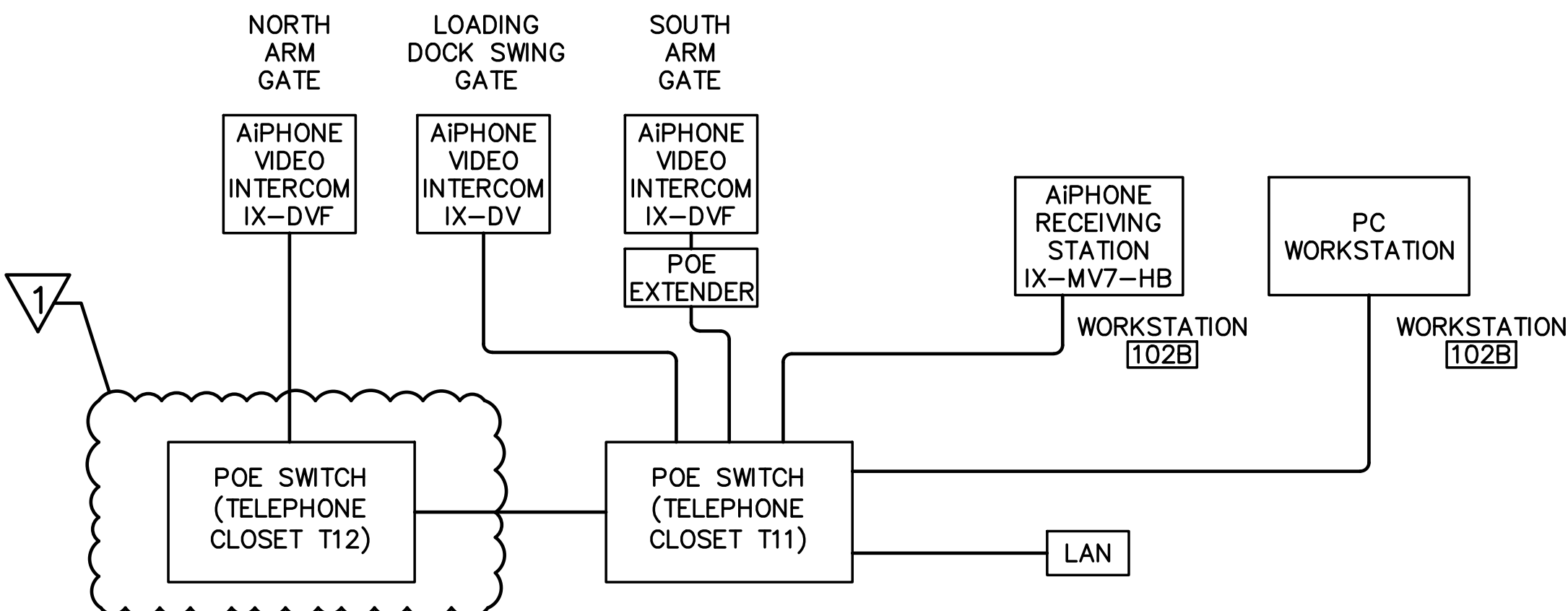


3 STATE HOUSE IP CAMERA SYSTEM (VIDEO SURVEILLANCE)

ET103/NOT TO SCALE

IP CAMERA SYSTEM (VIDEO SURVEILLANCE) DETAIL NOTES:

- CAMERAS WIRING MUST BE TERMINATED IN DEDICATED VIDEO PATCH PANELS IN THE IT ROOM AND NOT PART OF VOICE OR DATA WIRING NETWORKS.
- COORDINATE MONITOR LOCATION WITH ARCHITECTURAL TRADE AND OWNER.



4 TYPICAL AIPHONE VIDEO INTERCOM DETAIL

ET103/NOT TO SCALE

TYPICAL AIPHONE DETAIL NOTES:

- PROVIDE AIPHONE DEVICES, CONDUIT, CONDUCTORS, CABLING, AND MISCELLANEOUS PARTS AND PIECES FOR A COMPLETE AND FUNCTIONAL SYSTEM.
- PROVIDE POE EXTENDERS FOR DISTANCES LONGER THAT 330 FEET.
- PROVIDE WORKSTATION IN WORKSTATION 102B. IF IT IS ACCEPTABLE TO SECURITY PERSONNEL AND BUILDING CONTROL, THE SYSTEM MAY BE ABLE TO RUN ON AN EXISTING PC.
- PROVIDE AND COORDINATE FOR VEHICLE AND PEDESTRIAN GATE RELEASE.