

**CENTER BUILDING IMPROVEMENTS**
**ADDENDUM #1**

June 18, 2025

*The following items hereby modify, amend and supersede the plans and specifications dated May 30, 2025 for the above referenced project. The following items are hereby made part of the contract documents by reference and shall be as binding as though inserted in their entirety in the locations specified herein.*

*It shall be the responsibility of the Contractor to notify all Subcontractors and Suppliers proposed to be used for the various parts of the Work of any changes or modifications contained in this Addendum.*

	<b>Spec Section</b>	<b>Title</b>	<b>Description</b>
1 - 1	00 73 46	Wage Scale	Delete wage scale for Androscoggin County. Add therefore the attached wage scale for Kennebec County.
1 -	07 81 23	Fireproofing	Delete this section in its entirety.
1 -	00 72 13	Insurance	Re: Item 9.3.4: All of the work of this project is renovation work.
1 -		Coordination	For information see attached photos of the existing conditions.

	<b>Drawing</b>	<b>Title</b>	<b>Description</b>
1 -	A101-104	Plans	Revise window tags.
1 -	A201	Elevations	Revise window tags.
1 -	A401	Windows	Revise window schedule.
1 -	A401-3	Windows	No new interior trim or woodwork is required. All blocking shown is new.
1 -	A402+3	Windows	Angles shown on details at dormer windows have Marvin part numbers called out. These are to be furnished at heads and jambs by Marvin for installation by the contractor.
1 -	A201	Keystone	Keyed Note #2 refers to cutting the keystone at arch top windows. This is also shown on Detail 1/A403.
1 -	A402	Windows	Detail 3: Extreme care shall be taken in the window work on the dormers. The windows shall be removed by the GC, not a demolition subcontractor. This work will require partial removal of the existing sash weight boxes with careful cutting procedures. The existing metal pan cladding of the dormers shall not be damaged, with the exception of the return leg removal shown.
1 -	A501	Fireproofing	Fireproofing drawings are hereby re-issued. Drawing A500 is added to show types and locations overall for fireproofing. A specification for the fireproofing materials is also added.
1 -	D200	Elevations	In general, the windows in the original 3 story building along with the windows in the Window Type C locations have perimeter caulking which is ACM.

End of Addendum #1



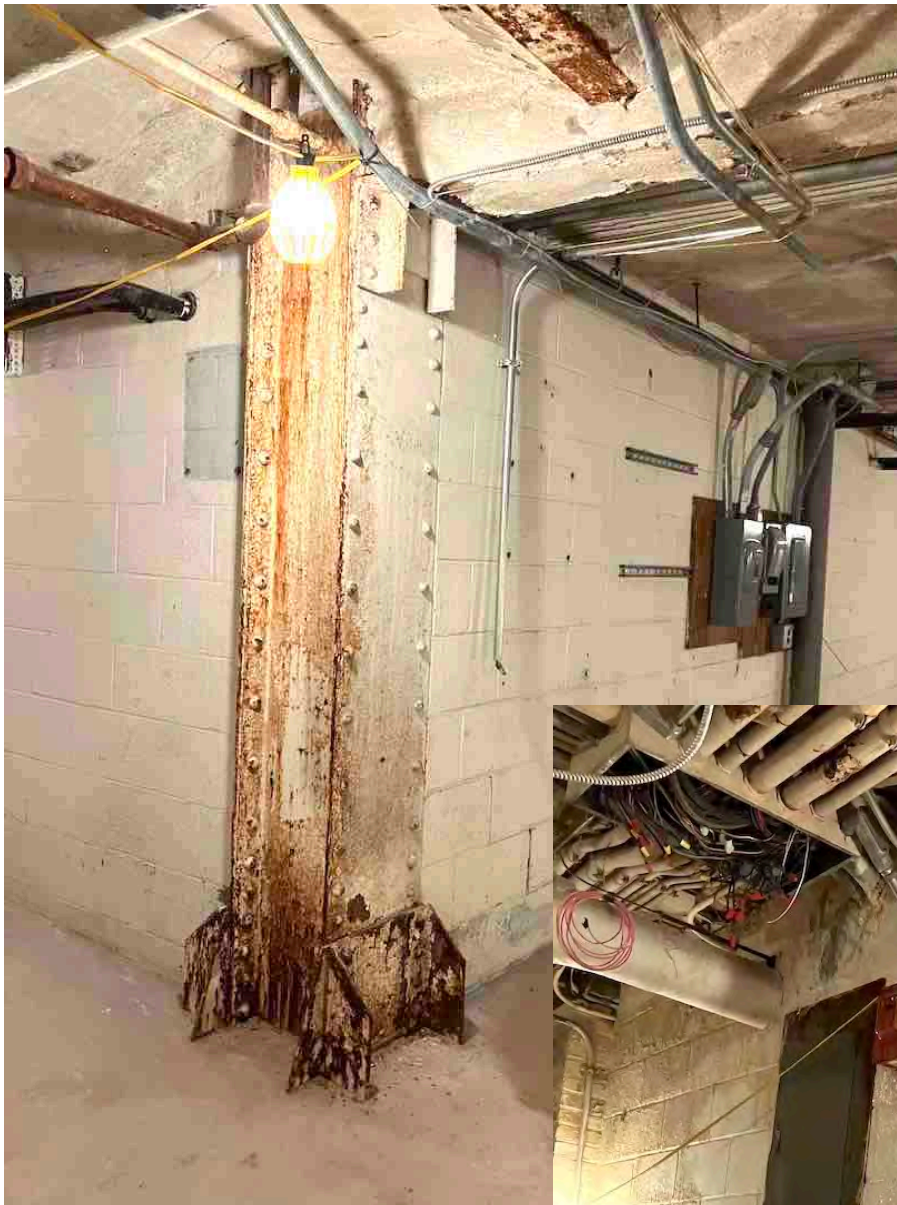
ROOM 111 : LOOKING WEST

INDICATIVE OF LEVEL OF FINISH ON SOUTH SIDE OF FIRST FLOOR

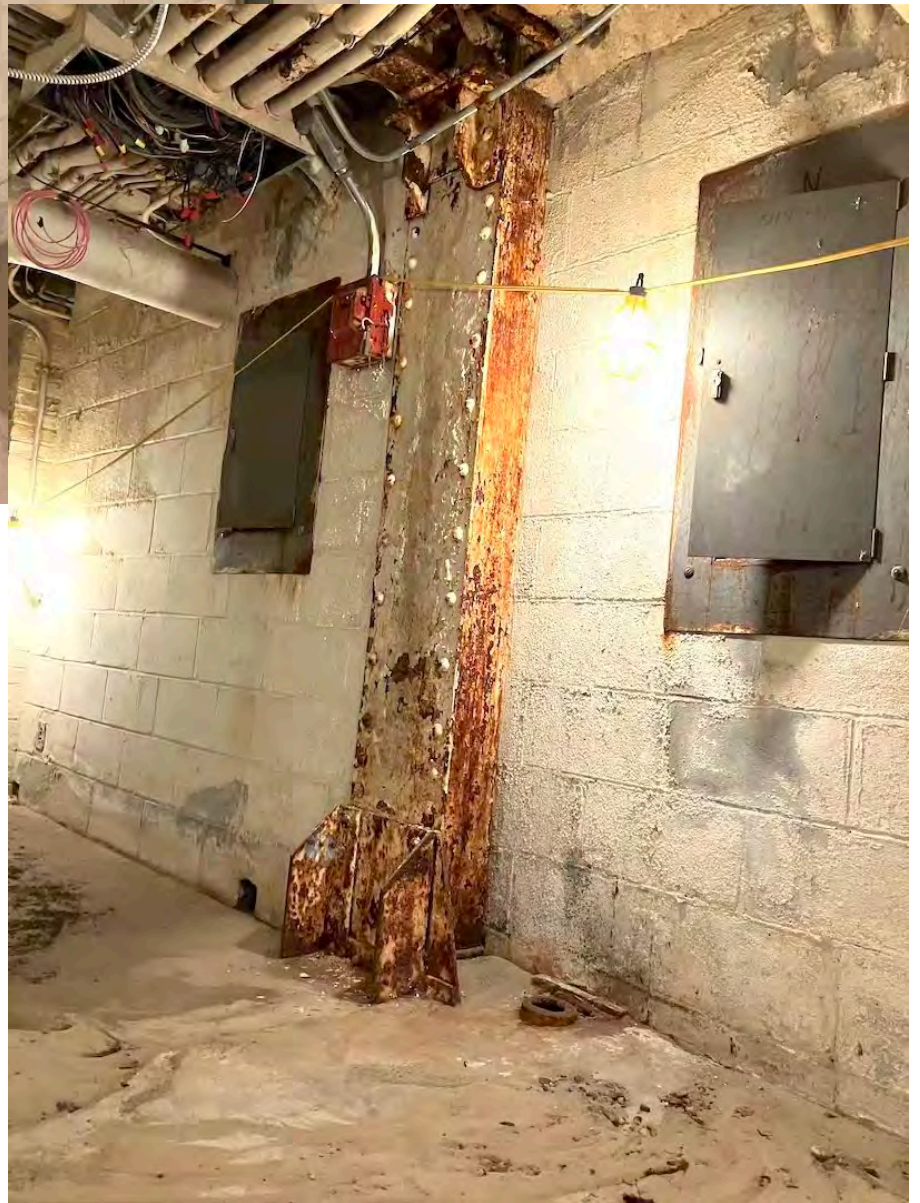


ROOM 155 SUSPENDED TERRA COTTA CEILING TO BE REMOVED  
SO THAT STEEL AND DECK ABOVE CAN BE FIREPROOFED





BASEMENT BUILT UP COLUMN



BASEMENT BUILT UP COLUMN





BASEMENT BRICK ARCH STEEL EXPOSED BOTTOM FLANGE



BASEMENT BUILT UP COLUMN : NORTHWEST



1957 STEEL FRAMING WITH FLAT CONC SLAB