

Addendum #1

24 September 2024

This Addendum modifies, amends, and supplements designated parts of the Contract Documents, Specifications and Drawings for:

Staff Entrance Upgrades
Blaine House
Augusta, Maine

This addendum is to be added and become part of the Contract Documents and modifies the original Project Manual/Specifications and Drawings dated September 6, 2024. Acknowledge receipt of this addendum in the space provided on the Bid Form. Failure to do so may subject the bidder to disqualification.

It shall be the responsibility of the Contractor to notify all Subcontractors and Suppliers for various portions of the work of any changes or modifications contained in this Addendum.

Drawings:

DRAWING SF101

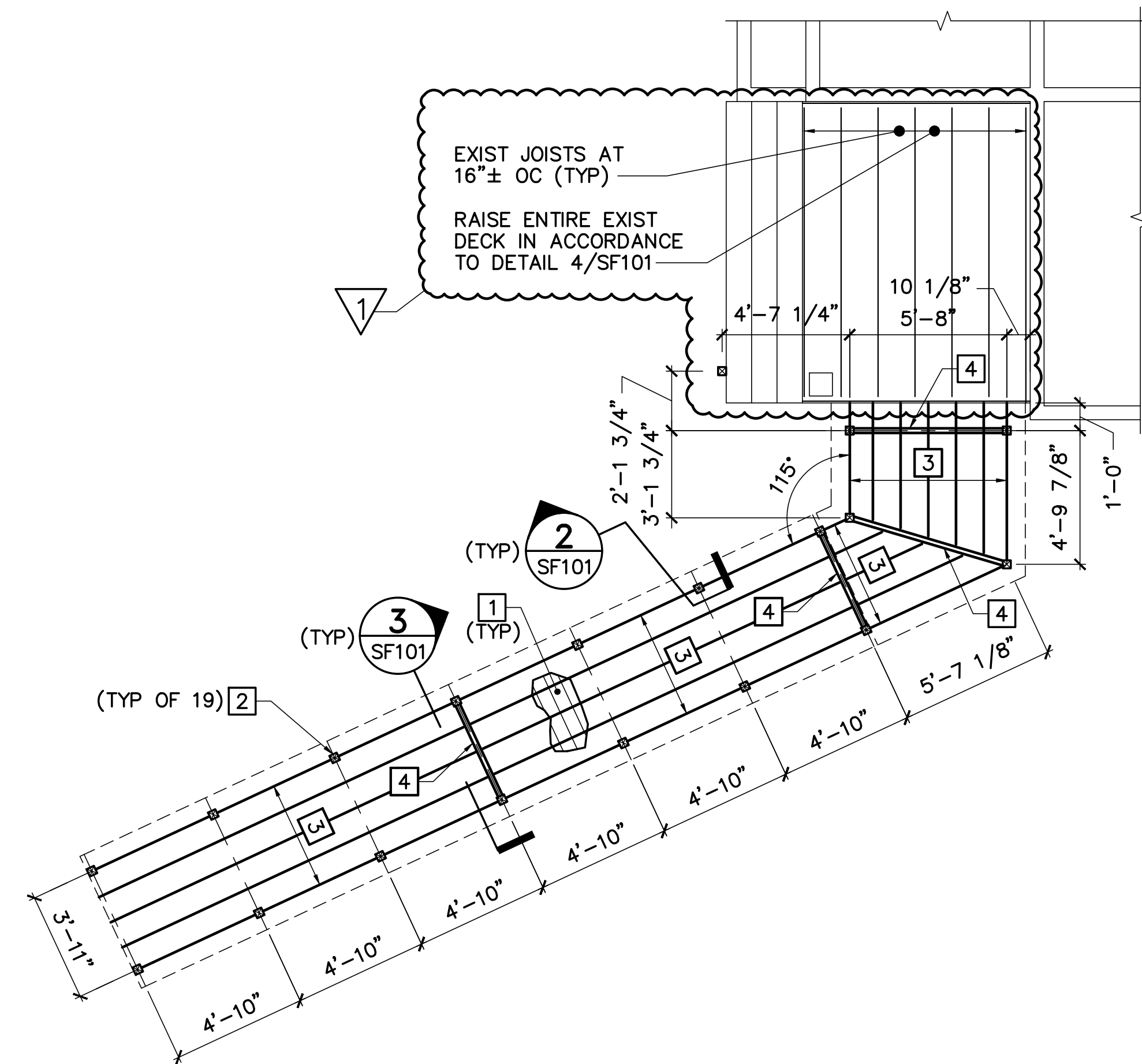
1. 1/SF101 **ADD** note "RAISE ENTIRE EXIST DECK IN ACCORDANCE TO DETAIL 4/SF101".
2. 1/SF101 **ADD** "EXIST JOISTS AT 16" ± OC (TYP)".
3. 2/SF101 **CHANGE** scale to 1-1/2" = 1'-0".
4. 3/SF101 **CHANGE** scale to 1-1/2" = 1'-0".
5. **ADD** Detail 4/SF101 "JOIST CONN TO EXISTING DECK JOIST".
6. **ADD** Detail 5/SF101 "JOIST CONN NAILING PATTERN".

See attached, revised SF101.

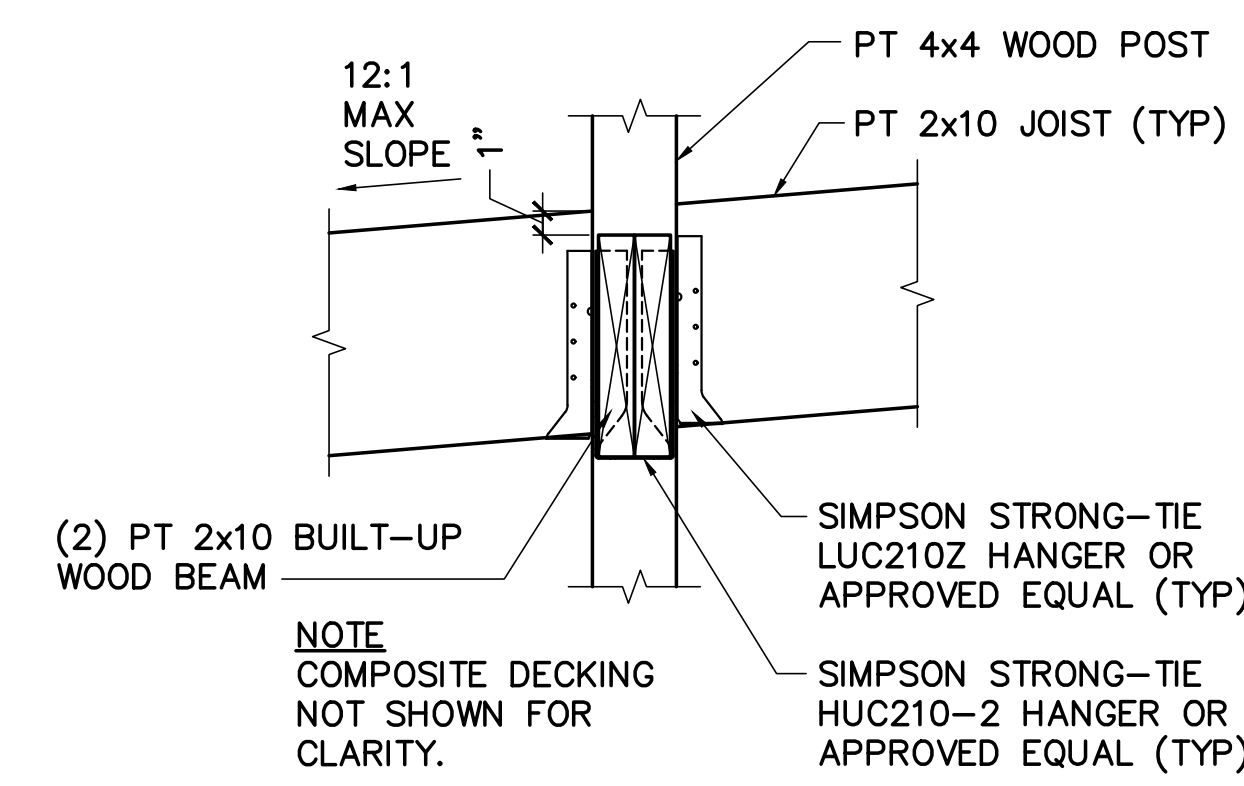
END OF ADDENDUM NO. 1

KEYNOTES (THIS SHEET ONLY)

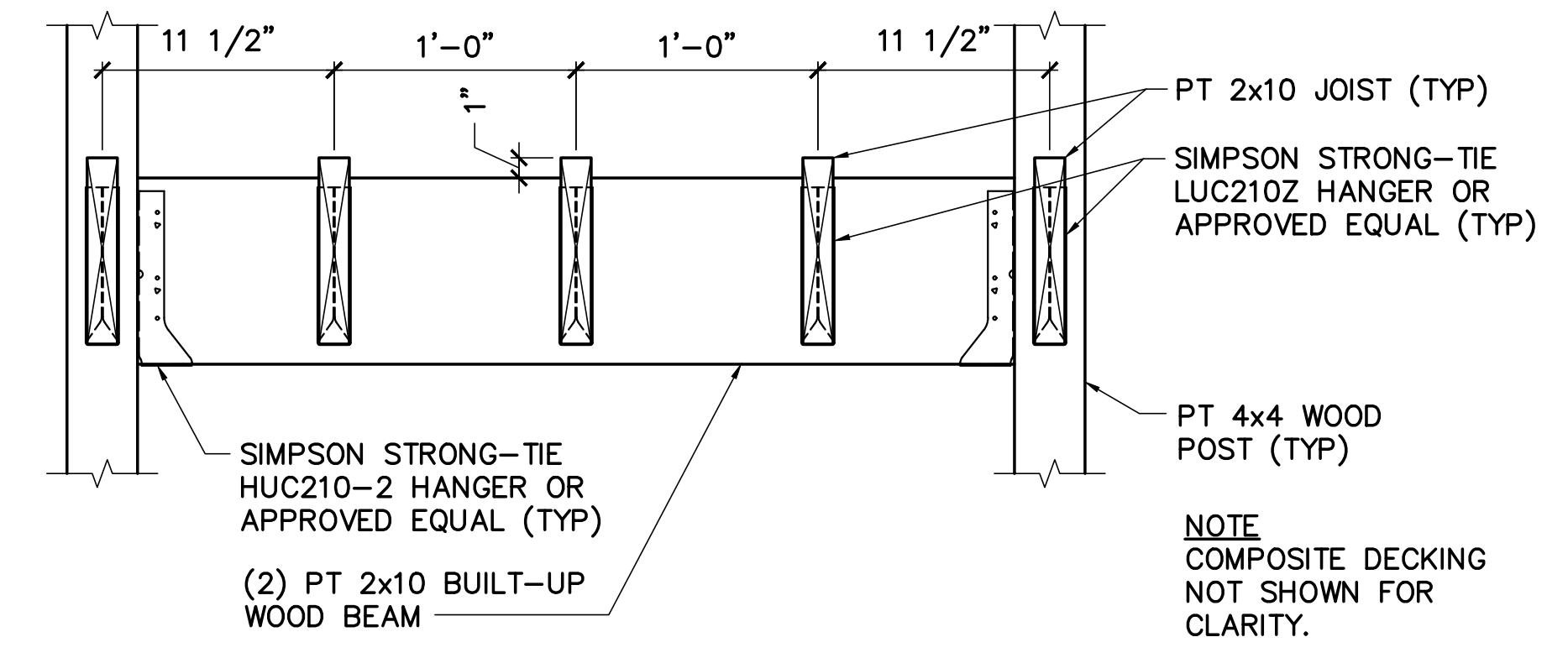
- 1 COMPOSITE PORCH DECKING.
- 2 PRESSURE TREATED 2x10 WOOD JOISTS AT 1'-0" ON-CENTER.
- 3 PRESSURE TREATED 4x4 WOOD POSTS.
- 4 PRESSURE TREATED (2) 2x10 BUILT-UP WOOD BEAM.



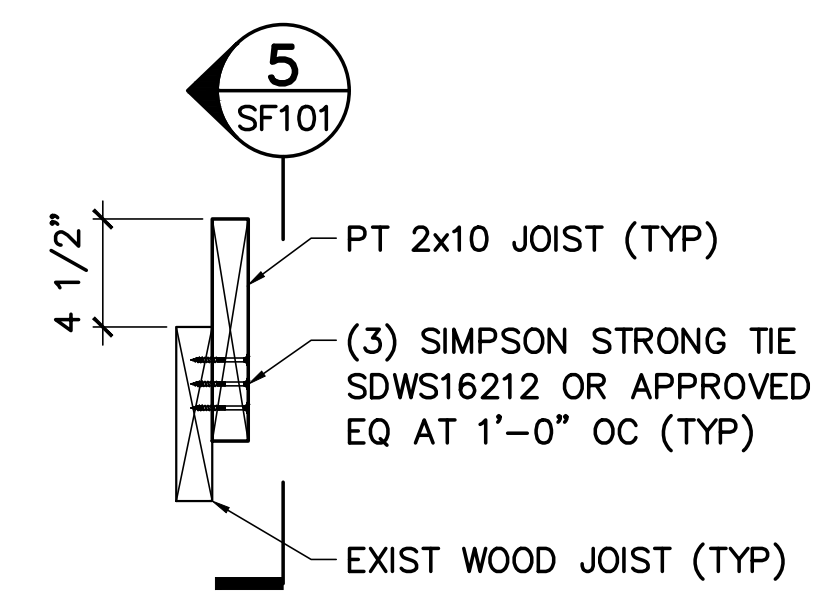
1 RAMP FRAMING PLAN
SF101 SCALE: 1/4"=1'-0"



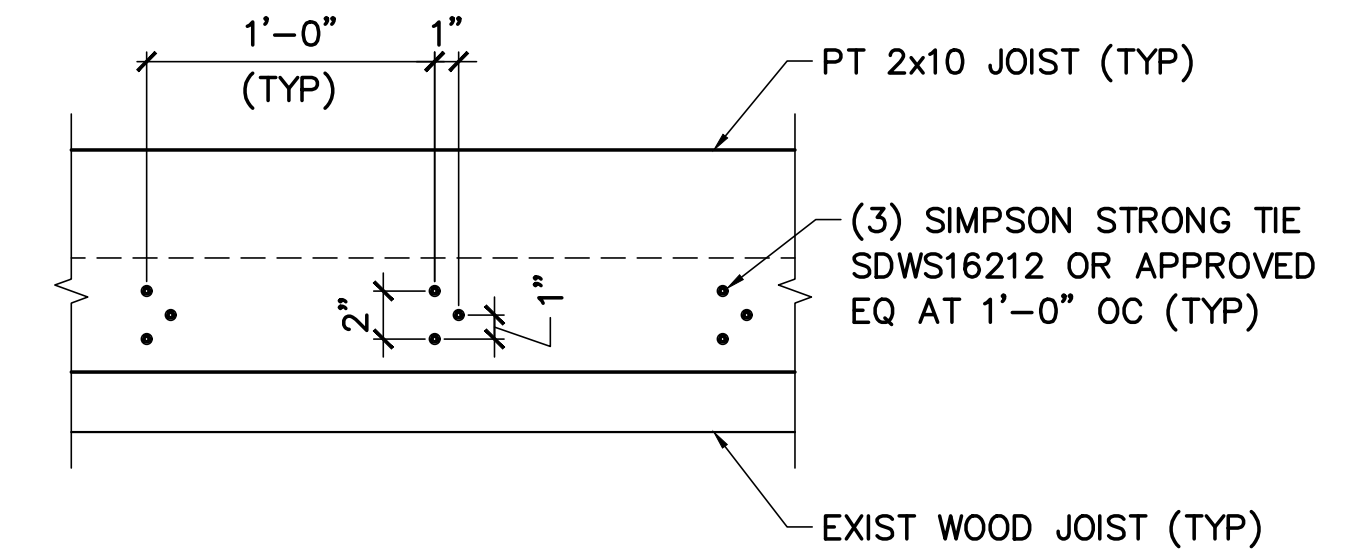
2 PT 4x4 WOOD POST CONN DETAIL
SF101 SCALE: 1-1/2"=1'-0"



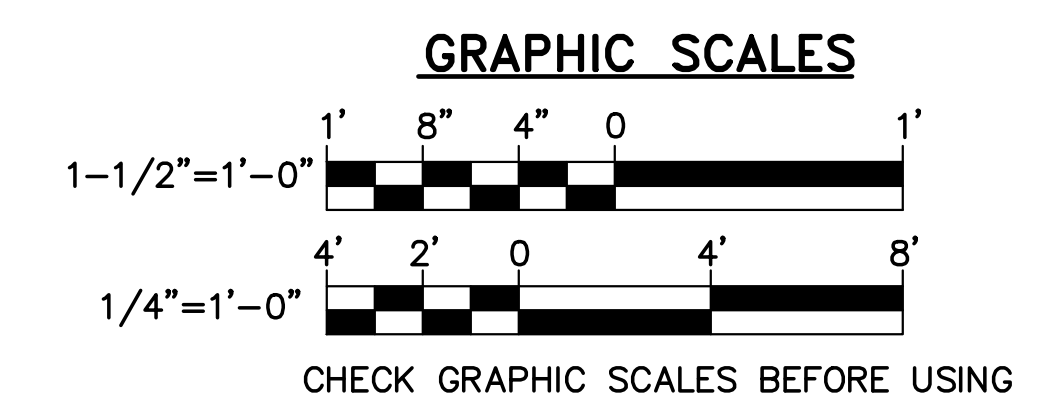
3 TYP RAMP FRAMING SECTION
SF101 SCALE: 1-1/2"=1'-0"



4 JOIST CONN TO EXIST DECK JOIST
SF101 SCALE: 1-1/2"=1'-0"



5 JOIST CONN NAILING PATTERN
SF101 SCALE: 1-1/2"=1'-0"



		STATE OF MAINE BGS	
		TITLE: BLAINE HOUSE STAFF ENTRANCE UPGRADES LOCATION: AUGUSTA, MAINE TITLE THIS DWG: RAMP FRAMING PLAN AND DETAILS	
1 09/24/24 ADDENDUM 1 DNM DRAWN BY: MJC NO. DATE DESCRIPTION BY CHECK BY: DNM REVISIONS NO. 22205.07 DATE 09/06/2024		OAK POINT ASSOCIATES SF101 SHEET NO. 5 OF 30	