

Lincoln/Haney Engineering Associates, Inc.

Structural Engineering Consultants

Michael A. Cunningham, P.E., LEED AP
Thad Gabryszewski, P.E., S.E.
Justin Desjarlais

ADDENDUM #1

DATE: September 22, 2022

PROJECT: Industries Building Foundation Repair at Mountain View Correctional Facility, Charleston, Maine, BGS Project 3352

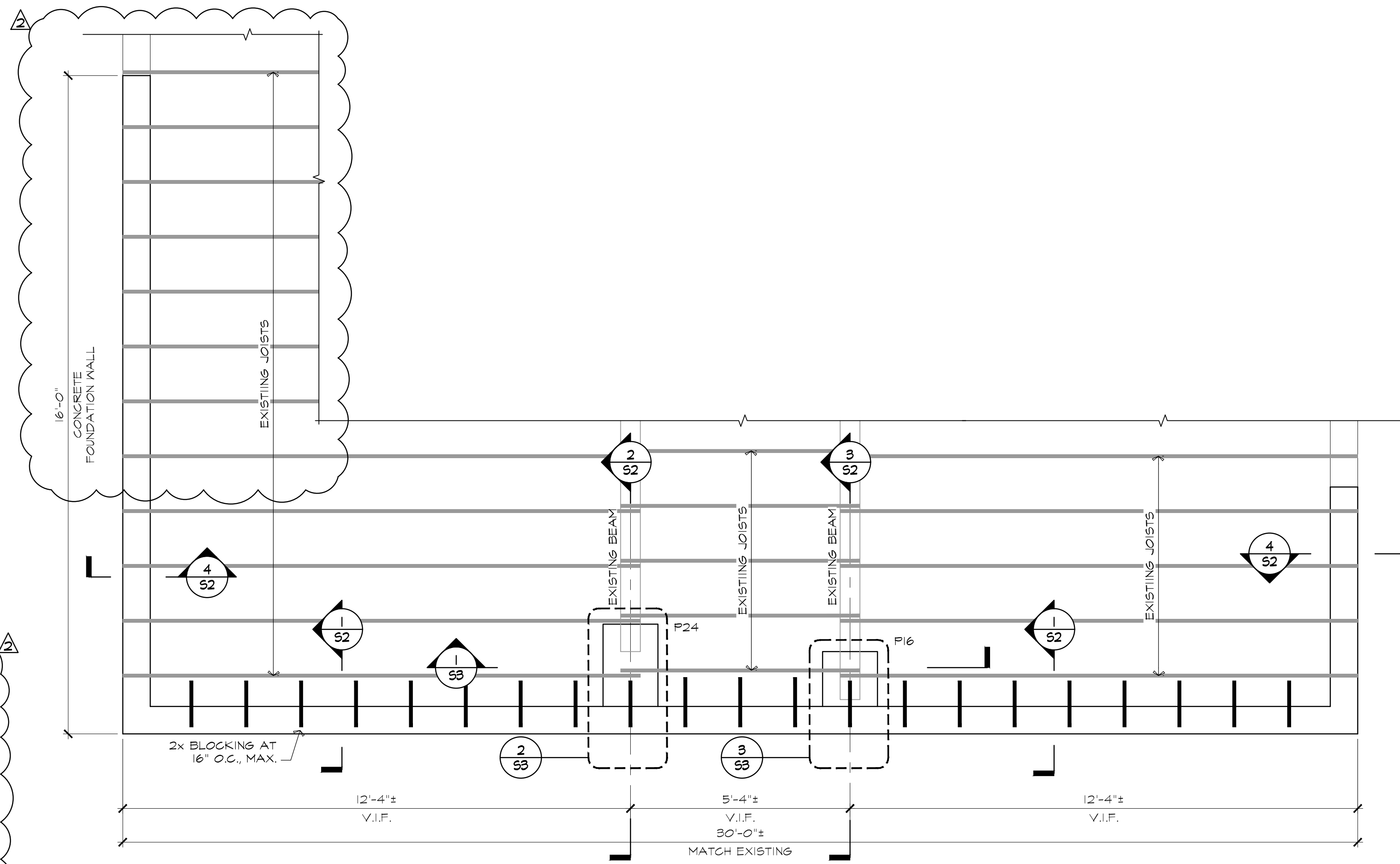
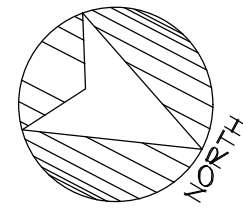
OWNER: Mountain View Correctional Facility
1182 Dover Road
Charleston, Maine 04422

BID DATE: September 27, 2022

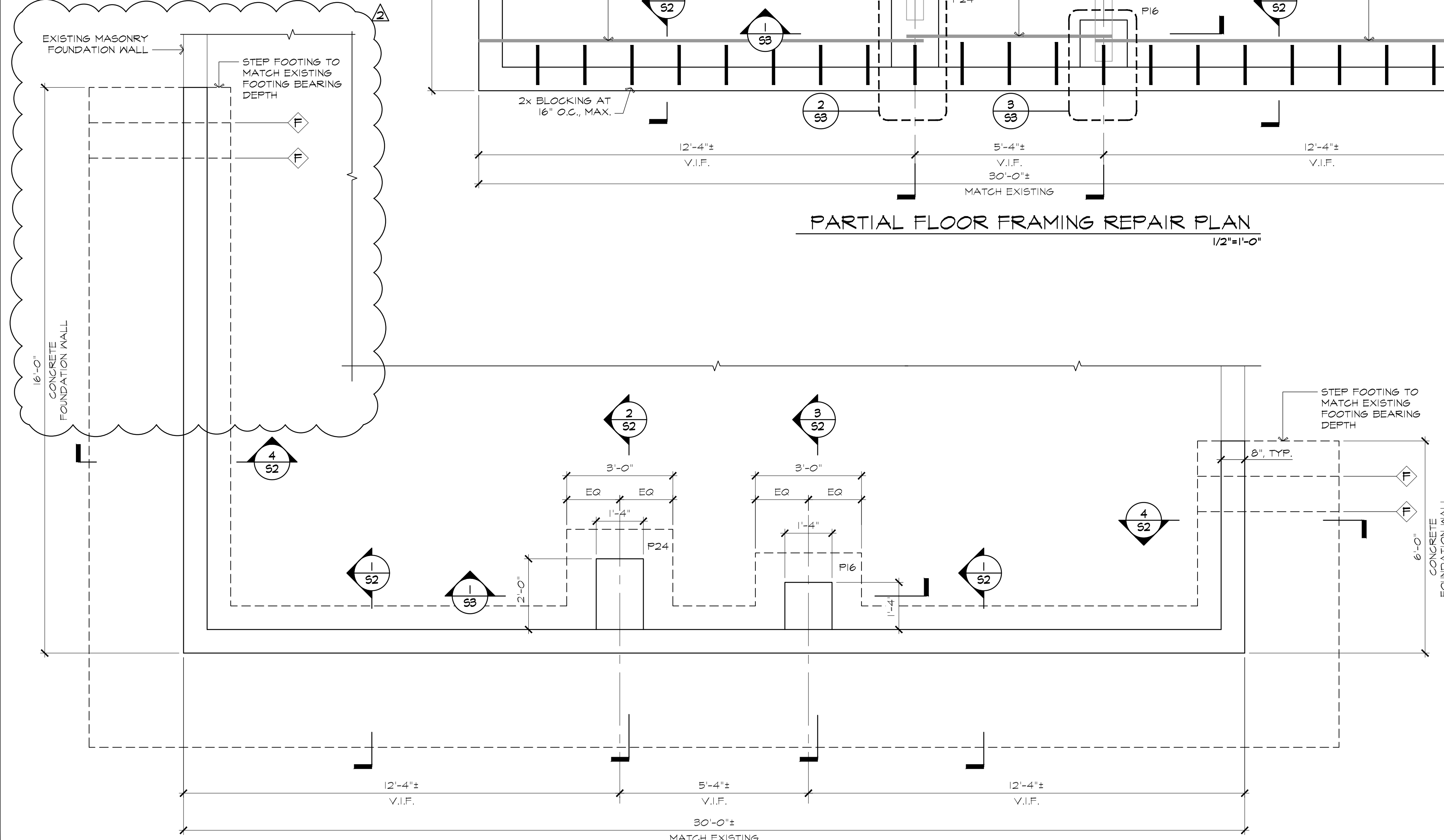
The contract documents dated January 5, 2021 are modified in accordance with this addendum as follows:

DESCRIPTION	<u>Relating to Drawings</u> 1. Drawing S1 Revise drawing S1 as shown on attached revised drawing.
ATTACHMENTS	Lincoln/Haney Engineering drawing S1.

ENGINEER: By:	Lincoln/Haney Engineering Associates, Inc. Michael A. Cunningham, P.E., LEED AP
--------------------------------	------------------------------------------------------------------------------------



PARTIAL FLOOR FRAMING REPAIR PLAN
1/2"=1'-0"



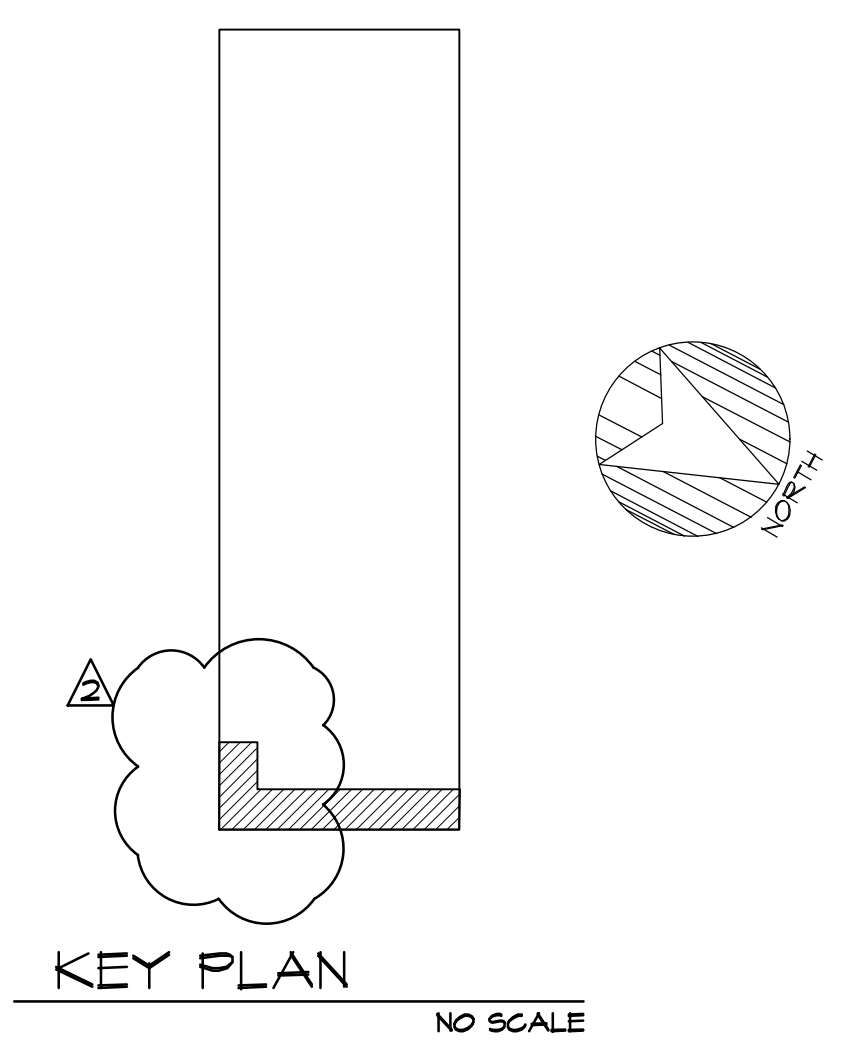
PARTIAL FOUNDATION REPAIR PLAN
1/2"=1'-0"

- SHEET NOTES:**
- SEE SHEET 50.1 FOR GENERAL NOTES.
 - IT SHALL BE THE RESPONSIBILITY OF THE CONTRACTOR TO LOCATE, PROTECT, REMOVE, AND/OR RE-INSTALL ALL MECHANICAL, ELECTRICAL, AND PLUMBING UTILITIES AFFECTED BY THE WORK. COORDINATE WITH THE OWNER.
 - TOP OF WALL ELEVATION SHALL BE 3" BELOW BOTTOM OF EXISTING JOISTS FOR INSTALLATION OF (2)-2x PLATES ON TOP OF CONCRETE FOUNDATION WALL.
 - TOP OF PIER ELEVATION SHALL BE 3" BELOW BOTTOM OF EXISTING BEAMS FOR INSTALLATION OF (2)-2x PLATES ON TOP OF CONCRETE PIERS.

- LEGEND:**
- INDICATES FOOTING STEP, SEE TYPICAL DETAIL ON SHEET 53
 - INDICATES PIER, SEE PIER SCHEDULE AND DETAILS

PIER SCHEDULE			
LABEL	PLAN DIMENSION	VERTICAL REINFORCING	HORIZONTAL REINFORCING
P16	16" X 16"	(10) - #5 BARS	#3 TIES @ 12" O.C. MAX
P24	24" X 16"	(12) - #5 BARS	#3 TIES @ 12" O.C. MAX

- PIER NOTES:**
- VERTICAL PIER REINFORCING SHALL BE TIED W/ #3 REBAR AS PER ACI 318 LATEST EDITION AND AS SHOWN IN TYPICAL DETAILS.
 - PROVIDE (3) - #3 TIES WITHIN TOP 5' AT THE TOP OF EACH PIER.
 - THE FIRST TIE ABOVE THE FOOTING SHALL BE LESS THAN 4" FROM THE TOP OF THE FOOTING.
 - DOWELS TO FOOTING SHALL BE SAME SIZE AND SPACING OF VERTICAL PIER BARS. PROVIDE CLASS B TENSION LAP SPLICES.
 - REFER TO GENERAL CONCRETE NOTES FOR COVER REQUIREMENTS.
 - REFER TO SECTIONS FOR FOUNDATION WALL REINFORCING. WALL REINFORCING SHALL BE CONTINUOUS THROUGH PIERS.
 - REFER TO FOUNDATION PLAN FOR TOP OF PIER ELEVATIONS.

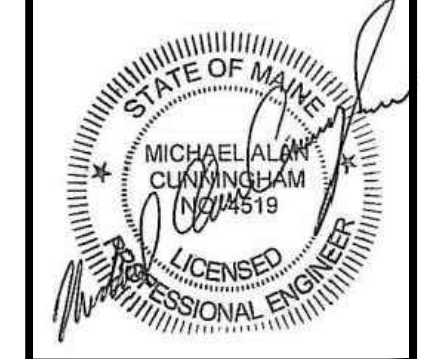


NO.	DATE	REVISION
1	4-8-22	RE-ISSUED FOR BID
2	4-22-22	REVISED EXTENTS OF WALL

DRAWN BY: SJAM
 CHECKED BY: MAC
 ISSUE DATE: 1-5-2022
 PROJ. NO.: 2021.1414

Mountain View Correctional Facility
Industrial Bldg. Foundation Repair
Charleston, Maine

PARTIAL FOUNDATION AND FRAMING PLANS



Lincoln / Haney
 Engineering Associates, Inc.
 14 Maine Street, Suite 306A
 Brunswick, Maine 04011
 Phone: 207-729-1061 Fax: 207-729-2941

S1