

**DOLBY LANDFILL PHASE 2 AND PHASE 3 COVER UPGRADE  
MAINE BUREAU OF GENERAL SERVICES**

**ADDENDUM NO. 2  
January 5, 2022**

Distribution:

Addendum No. 2 is stored on the Maine Bureau of General Services website for the Dolby Landfill Phase 2 and Phase 3 Cover Upgrade.

To All Contractors:

Please acknowledge receipt of this Addendum by inserting its number and date in the bid form. Failure to acknowledge the Addendum may subject the bidder to disqualification. This Addendum forms part of the Contract Documents and modifies them as follows:

**1. Response to questions received via email on Thursday, December 30, 2021**

- **Addendum #1 indicates that there should be enough soil for this project from onsite. Will the material require any screening prior to placement?**

Bulk samples of the cover material were collected in 2016. Gradation tests performed on the samples indicated 100 percent passing the 3-inch sieve. If oversized material is encountered within the cover material during reuse, the oversized material shall be removed.

- **Is there existing topsoil onsite for use? If so, will it require screening?**

Vegetative soil for the cover area of the project shall be stripped from the existing area, stockpiled, and reused. Additional topsoil for disturbed areas outside the limits of the cover area will be supplied by the contractor. Like the cover material any oversized material encountered during reuse shall be removed.

- **Can you provide a detail or explanation of what is required for the monitoring well and piezometer abandonment?**

Monitoring wells and piezometers are 1-inch PVC. The monitoring wells and piezometers shall be abandoned by removing the piping. Generally, this can be accomplished by pulling the piping out of the location.

- **Per the drawings it appears we are excavating to base grades that will bring the grade to the top of the existing sand layer. Drawings indicate that we are to verify thickness and add to the sand layer if necessary to a minimum of 6". Assuming the sand layer is thick enough, are we to assume the existing sand layer meets specification requirements for the gas collection? Also, if adding sand is required it is a large unknown and is difficult for all bidders to be on the same page for a lump sum project. Could a unit price item be added for dealing with any required additional sand?**

The existing sand layer is to be used for gas collection. The Maine Bureau of General Services has elected not to include unit pricing. Gas collection sand supplied by the contractor will be required for the open waste area in the northeast corner of Phase 2. In the event additional sand is required to meet minimum sand thickness in the existing covered area it will need to be quantified and shall be subject to negotiation of fair and reasonable rates for contract costs as stated in the contract documents.

- **Is there any invert information or assumed depth for the existing drainage manholes requiring abandonment?**

Please see table below for drain manhole depth information:

<b>Drain Manhole</b>	<b>Approximate Depth (ft)</b>
DMH D3-#8	4
DMH D4-#1A	5
DMH D3-#1	4
DMH D3-#2	7
DMH D3-#4	4
DMH D3-#5	4

## **2. Response to question received via email on Friday, December 31, 2021**

- **Due to the volatility in material prices and supply issues would the BGS consider paying for materials that are delivered onsite even if it's for a phase to be completed the following year? As you are probably aware it is very difficult to secure material pricing from suppliers.**

The Engineer and Owner, understanding the construction materials market, intend to accommodate early purchases of materials to the extent feasible. Bidders may incorporate the cost of early procurement in the bid amount, however, decisions on what is acceptable billing is determined on a monthly basis, subject to approval by the Engineer and Owner. Upon award of the contract the Owner will request a proposed Schedule of Values, monthly draw-down schedule, and Project Schedule. Early coordination with the Engineer and Owner of planned early procurement will facilitate approval of those billings. Payment for early procurement of materials will be for materials only, with installation to be billed later.

The general contractor will need to meet the following conditions, at a minimum, for payment of early purchase of, for example, geosynthetic materials:

- Proof of payment to the geosynthetic material supplier(s) for the materials and their shipment and receipt at the Dolby Landfill facility.
- Proof of insurance for materials stored on- or off-site.
- Commitment to proper handling and storage of all geosynthetic materials planned for use such that the material properties are not adversely affected. Storage should be on a flat, free-draining surface that has been prepared to be free of debris which may cause punctures or other damage.
- All rolled geosynthetics shall be delivered and stored in or under tight, light-blocking wrappings to protect the material(s) from ultraviolet degradation as recommended by material manufacturer.
- Rolled geosynthetics shall not exceed the stacking height recommended by the geosynthetic manufacturer(s).

A tentative storage area for the 2023 geosynthetics has been identified on the surface of the Dolby II Landfill site. Preparation of the storage area will include mowing the grass surface, walking the mowed surface, and identifying and removing debris that could cause punctures or other damage, and rolling of the storage area with a smooth drum to further minimize potential protrusions that could damage stored materials.

### **3. Response to question received via email on Tuesday, January 4, 2022**

- **A company looking to quote the pipe cleaning wants to visit the site and look in a few structures on Tuesday next week. Is this possible?**

The roads around the landfill are not plowed during the winter months limited access to the catch basins. Additionally, it would be difficult to locate and uncover the catch basins due to snow.

We have included pictures of the catch basins within the project limit as Attachment 1; only main collection pipes at bottom of structure will need to be cleaned.

If you have any questions or comments regarding this Addendum, or the Contract Scope of Work for the Dolby Phase 2 and Phase 3 Cover Upgrade, please contact Nick Thompson of Sevee & Maher Engineers, Inc. (207) 829.5016, [DoblyPhase2@smemaine.com](mailto:DoblyPhase2@smemaine.com).

**ATTACHMENT 1**

October 30, 2018 Manhole Inspection  
Dolby Landfill  
East Millinocket, Maine



CB #32 Exterior



CB #32 Interior

October 30, 2018 Manhole Inspection  
Dolby Landfill  
East Millinocket, Maine



CB #33 Exterior



CB #33 Interior

October 30, 2018 Manhole Inspection  
Dolby Landfill  
East Millinocket, Maine



CB #34 Exterior



CB #34 Interior

October 30, 2018 Manhole Inspection  
Dolby Landfill  
East Millinocket, Maine



CB #35 Exterior



CB #35 Interior



**Manhole Inspection  
Dolby Landfill, East Millinocket, Maine  
July 2, 2020**



**CB #2 Exterior**



**CB #2 Interior**

**Manhole Inspection  
Dolby Landfill, East Millinocket, Maine  
July 2, 2020**



**CB #3 Exterior**



**CB #3 Interior**

**Manhole Inspection  
Dolby Landfill, East Millinocket, Maine  
July 2, 2020**



**CB #4 Exterior**



**CB #4 Interior**

**Manhole Inspection  
Dolby Landfill, East Millinocket, Maine  
July 2, 2020**



**CB #5 Exterior**



**CB #5 Interior**

**Manhole Inspection  
Dolby Landfill, East Millinocket, Maine  
July 2, 2020**



**CB #6 Exterior**



**CB #6 Interior**

**Manhole Inspection  
Dolby Landfill, East Millinocket, Maine  
July 2, 2020**



**CB #6A Exterior**



**CB #6A Interior**

**Manhole Inspection  
Dolby Landfill, East Millinocket, Maine  
May 8, 2020**



**CB #7 Exterior**



**CB #7 Interior**

**Manhole Inspection  
Dolby Landfill, East Millinocket, Maine  
May 8, 2020**



**CB #8 Exterior**



**CB #8 Interior**



**Manhole Inspection  
Dolby Landfill, East Millinocket, Maine  
May 8, 2020**



**CB #9 Exterior**



**CB #9 Interior**

**Manhole Inspection  
Dolby Landfill, East Millinocket, Maine  
May 8, 2020**



**CB #10 Exterior**



**CB #10 Interior**

**Manhole Inspection  
Dolby Landfill, East Millinocket, Maine  
May 8, 2020**



**CB #13 Exterior**



**CB #13 Interior**

**Manhole Inspection  
Dolby Landfill, East Millinocket, Maine  
May 8, 2020**



**CB #17 Exterior**



**CB #17 Interior**

**Manhole Inspection  
Dolby Landfill, East Millinocket, Maine  
May 8, 2020**



**CB #18 Exterior**



**CB #18 Interior**

**Manhole Inspection  
Dolby Landfill, East Millinocket, Maine  
May 8, 2020**



**CB #19 Exterior**



**CB #19 Interior**

**Manhole Inspection  
Dolby Landfill, East Millinocket, Maine  
May 8, 2020**



**CB #20 Exterior**



**CB #20 Interior**

**Manhole Inspection  
Dolby Landfill, East Millinocket, Maine  
May 8, 2020**



**CB #21 Exterior**



**CB #21 Interior**



**Manhole Inspection  
Dolby Landfill, East Millinocket, Maine  
May 8, 2020**



**CB #22 Exterior**



**CB #22 Interior**

**Manhole Inspection  
Dolby Landfill, East Millinocket, Maine  
May 8, 2020**



**CB #23 Exterior**

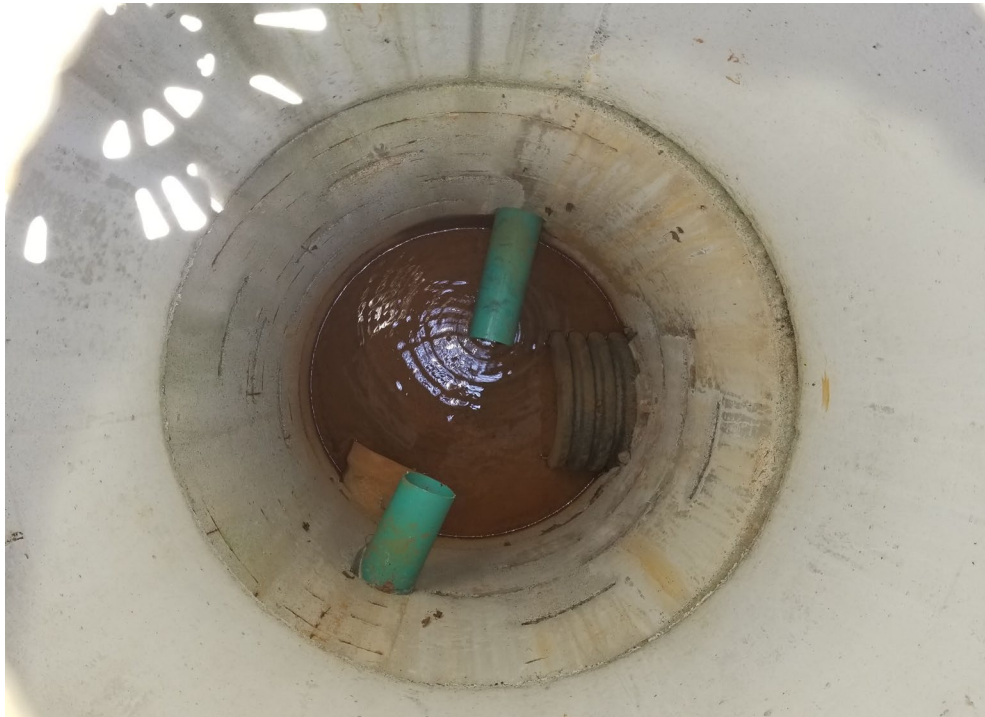


**CB #23 Interior**

**Manhole Inspection  
Dolby Landfill, East Millinocket, Maine  
May 8, 2020**



**CB #24 Exterior**



**CB #24 Interior**

**Manhole Inspection  
Dolby Landfill, East Millinocket, Maine  
May 8, 2020**



**CB #25 Exterior**



**CB #25 Interior**