

CONSTRUCTION DRAWINGS

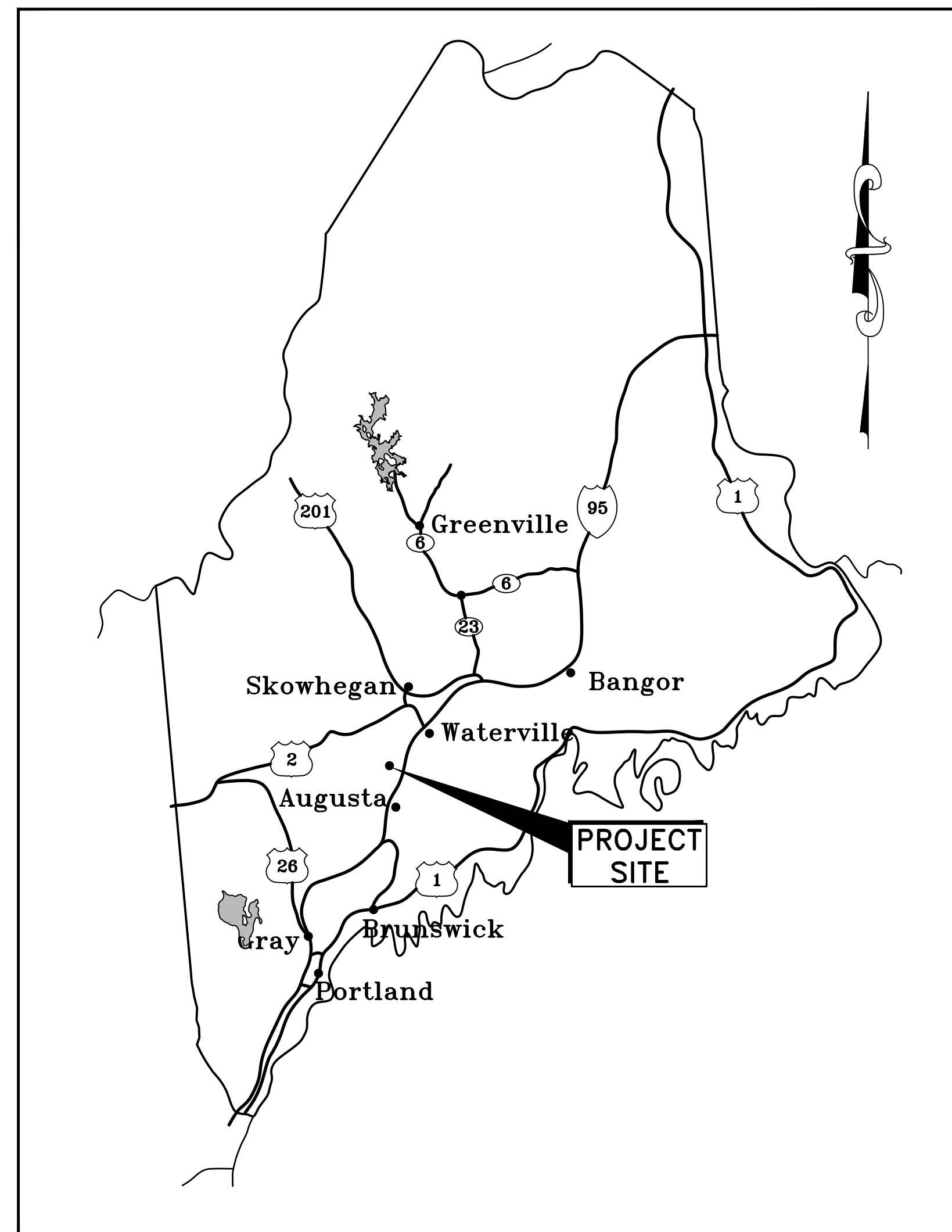
BGS NO. 3337

GREAT POND BOATING FACILITY PARKING IMPROVEMENTS BELGRADE, MAINE

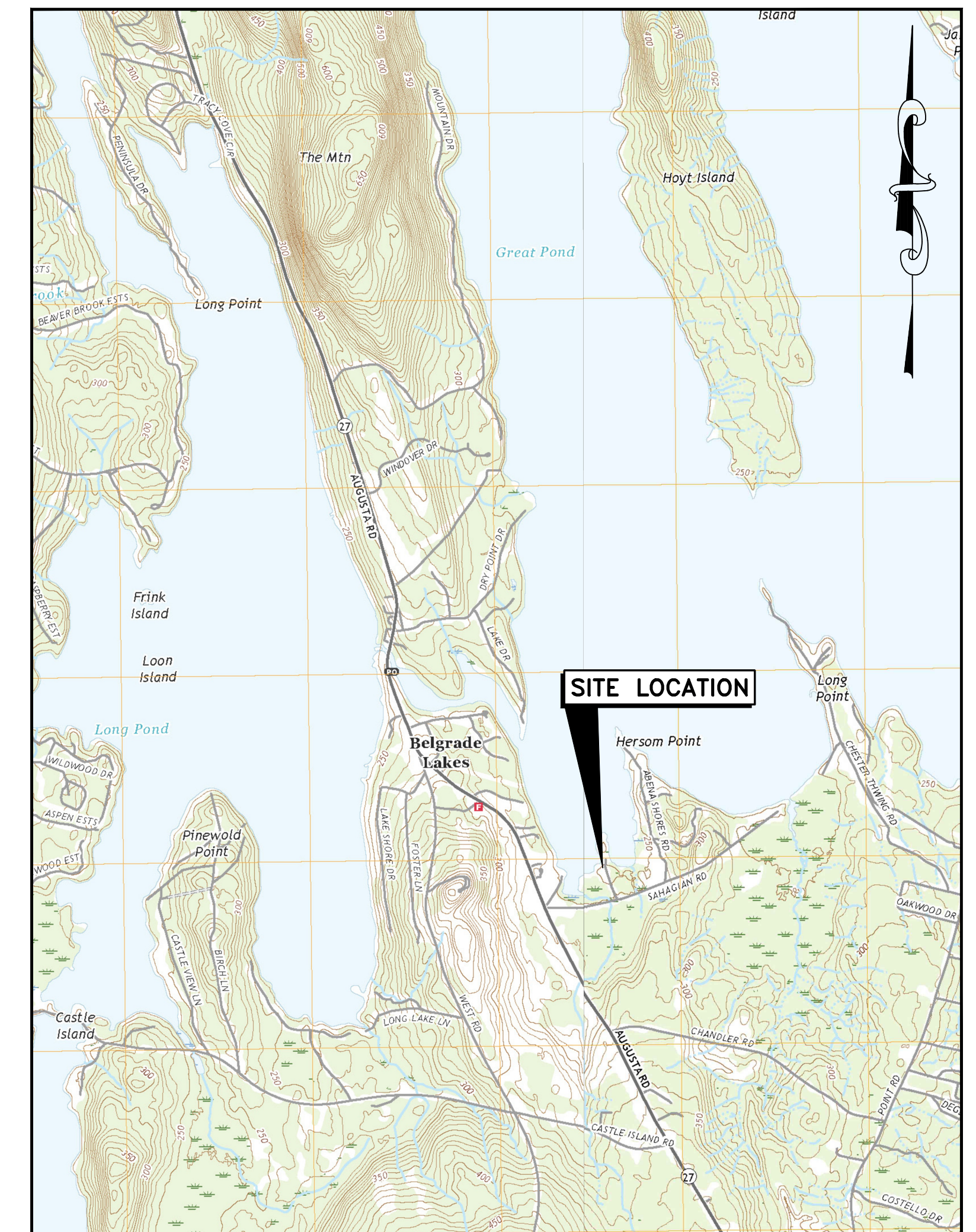
PINE TREE ENGINEERING, INC.
53 Front Street
Bath, Maine 04530

DRAWING INDEX

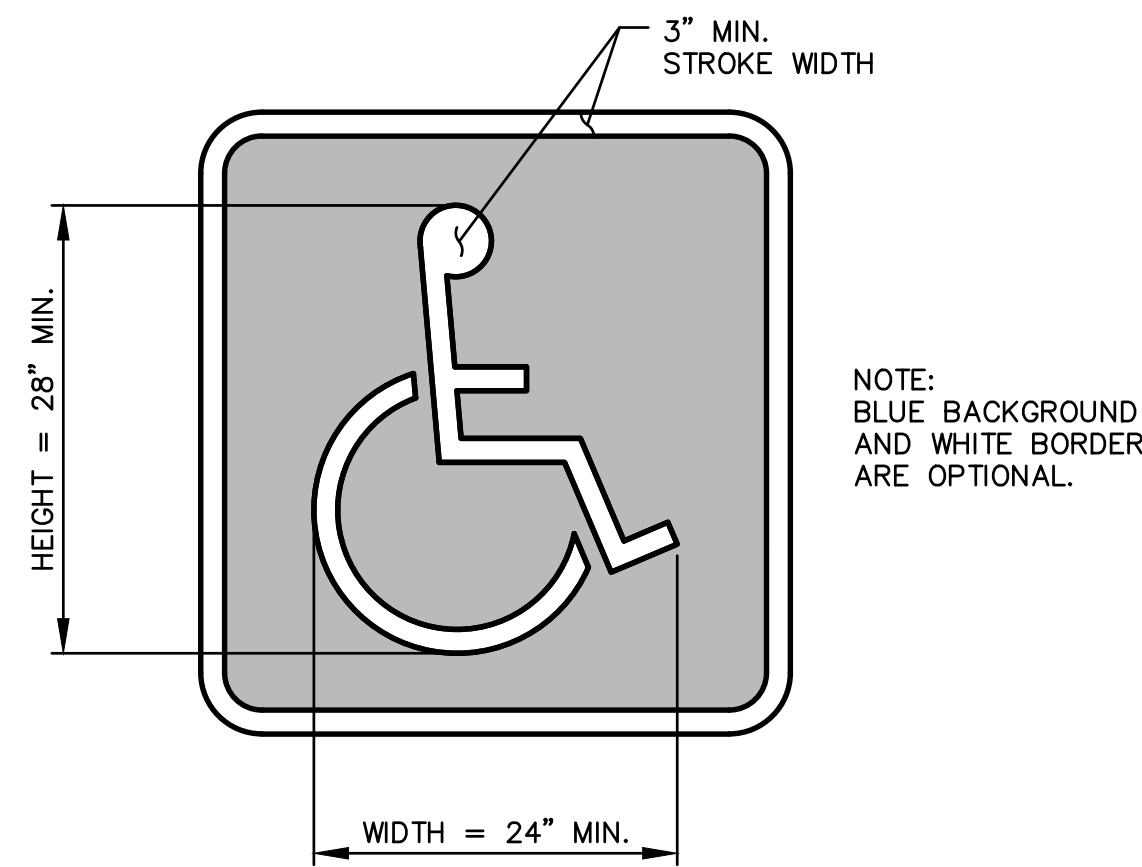
- 1 COVER
- 2 TYPICAL SECTIONS, DETAILS AND LEGEND
- 3 EXISTING CONDITIONS PLAN
- 4 PROPOSED SITE PLAN AND PROFILES



AREA MAP
SCALE: 1"=33± MILES

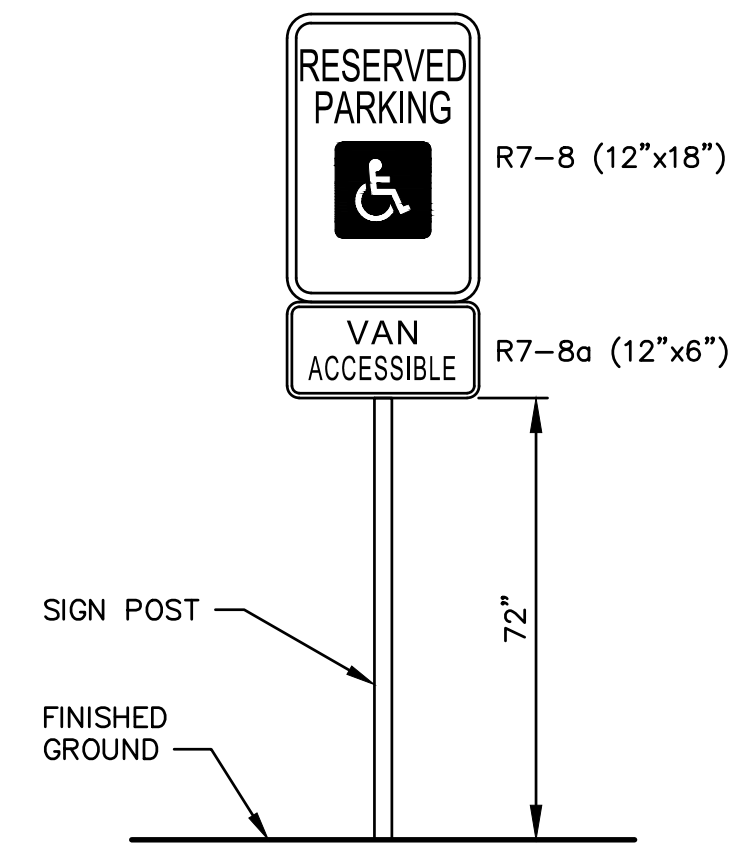


LOCATION MAP
SCALE: 1"=2,000±



ADA PARKING SPACE MARKING DETAIL

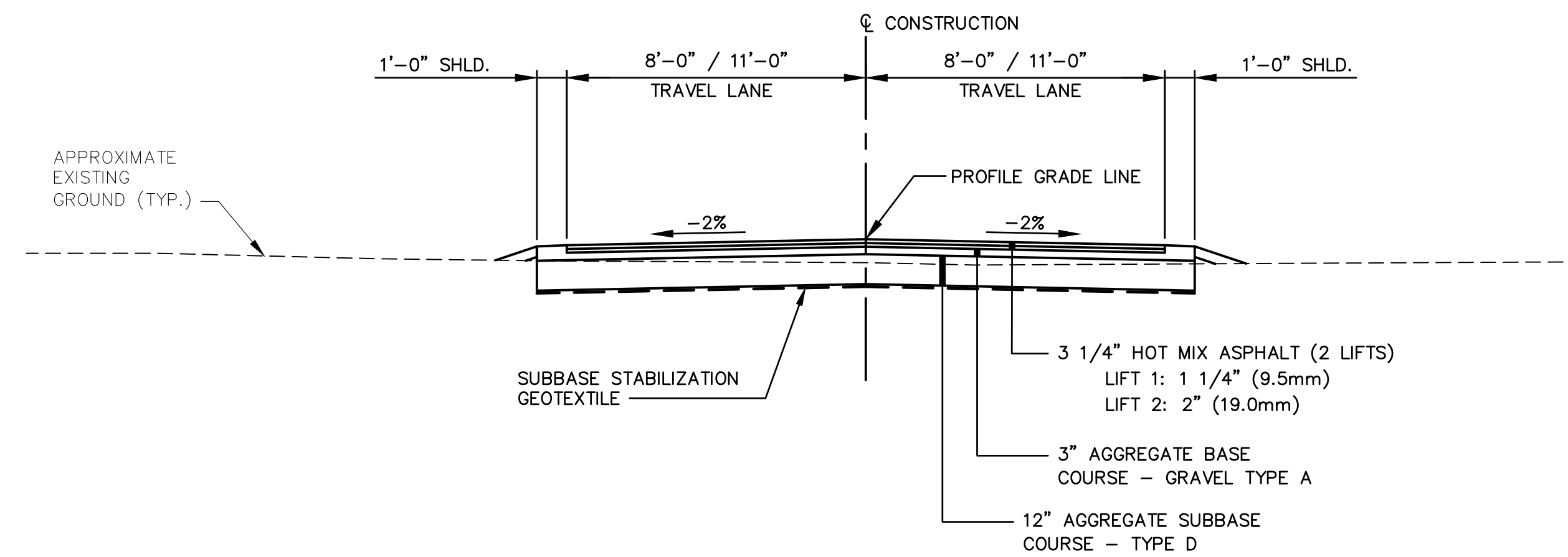
NOT TO SCALE



ACCESSIBLE PARKING SIGN DETAIL

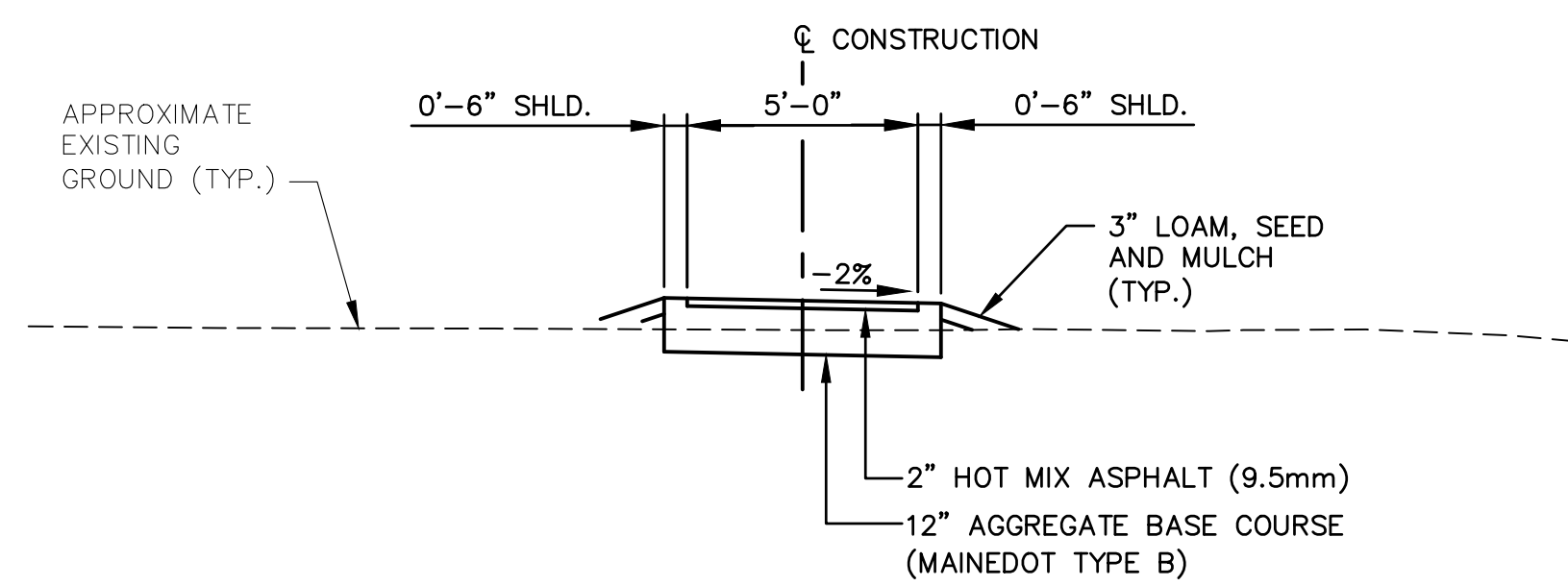
NOT TO SCALE

LEGEND		
EXISTING	DESCRIPTION	PROPOSED
---	APPROX. PROPERTY LINE	
---	APPROX. RIGHT-OF-WAY	
---	EDGE OF GRAVEL	
---	EDGE OF PAVEMENT	---
---	TREELINE	---
---	CULVERT	---
---	CONTOUR (2' INT.)	---
---	CONTOUR (10' INT.)	---
---	APPROXIMATE EDGE OF WATER	---
---	CONCRETE	---
---	UTILITY POLE	---
---	UNDERGROUND ELECTRIC/TELEPHONE	---
---	ROCK / BOULDER	---
---	DECIDUOUS TREE	---
---	STUMP	---
---	SIGN	---
---	SURVEY CONTROL POINT	---
---	RIPRAP	---



TYPICAL PAVED SECTION

SCALE: 1" = 4'-0"

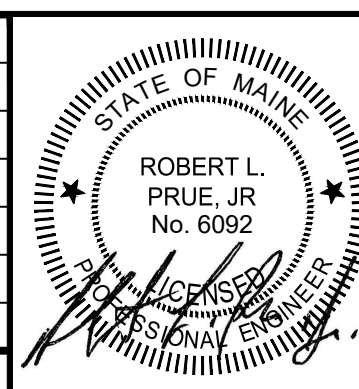


TYPICAL PAVED PATH SECTION

SCALE: 1" = 4'-0"

G:\Projects\2021\21009.dwg\21009 GEN-TYP.dwg 06/11/26 11:51am

REV	DATE	STATUS	BY	CHKD	APPD
0	6/11/2026	ISSUED FOR BIDDING	JET	RLP	RLP



DESIGNED BY:	RLP
DRAWN BY:	DB/JET
CHECKED BY:	RLP
APPROVED BY:	RLP
DATE:	6/11/2026

Pine Tree Engineering

53 Front Street
Bath, Maine 04530
Tel: (207) 443-1508
Fax: (207) 442-7029

Civil/Environmental Engineering • Surveying

CLIENT
**MAINE DEPARTMENT OF AGRICULTURE
CONSERVATION AND FORESTRY**
18 ELKINS LANE
AUGUSTA, MAINE 04330

PROJECT
**GREAT POND BOATING FACILITY
PARKING IMPROVEMENTS**

TITLE
**TYPICAL SECTIONS, DETAILS
AND LEGEND**

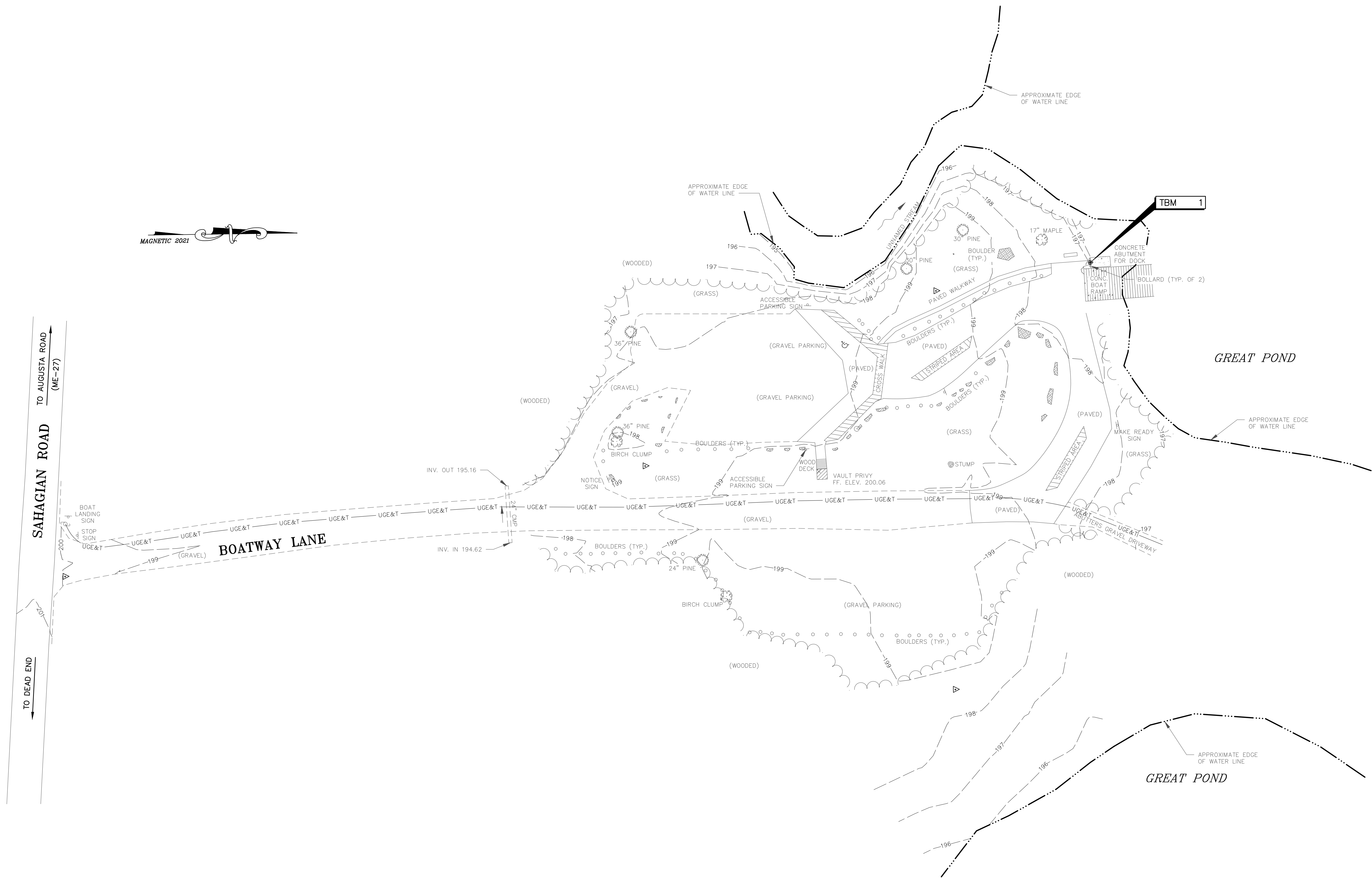
SCALE	AS SHOWN
PROJECT NO.	21009
DRAWING NO.	21009 GEN-TYP
SHT.	2 of 4
REV.	0

TEMPORARY BENCHMARKS:

TBM-1
TOP OF CONCRETE SLAB
BETWEEN BOLLARDS
ELEV. 197.03

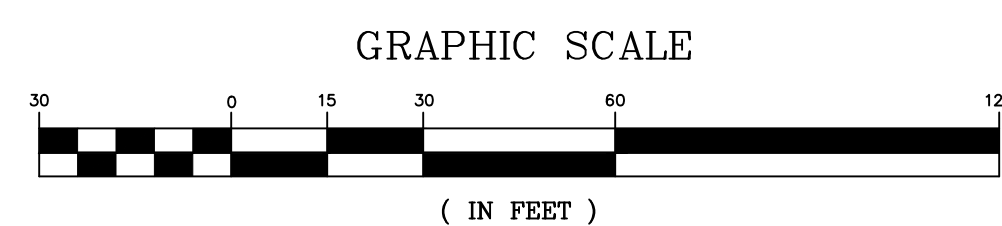
SURVEY NOTES:

- 1.) X,Y, AND X COORDINATES ARE BASED UPON AN ASSUMED DATUM.
- 2.) THE TOPOGRAPHIC SURVEY WAS COMPLETED BY PIONEER SURVEYING & MAPPING SERVICES ON NOVEMBER 1 AND 2, 2021.

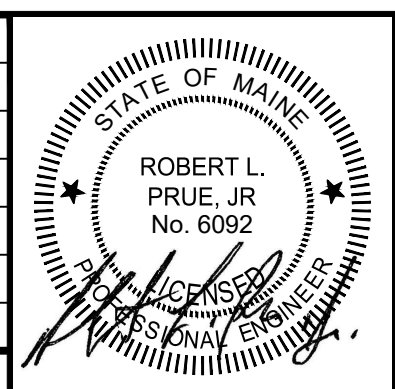


EXISTING CONDITIONS PLAN

SCALE: 1" = 30'



REV	DATE	STATUS	BY	CHKD	APPD
0	6/11/2026	ISSUED FOR BIDDING	JET	RLP	RLP



DESIGNED BY:	RLP
DRAWN BY:	DB/JET
CHECKED BY:	RLP
APPROVED BY:	RLP
DATE:	6/11/2026

Pine Tree Engineering

53 Front Street
Bath, Maine 04530
Tel: (207) 443-1508
Fax: (207) 442-7029

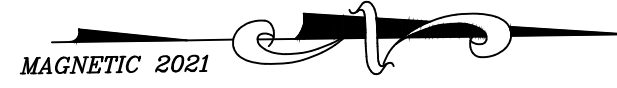
Civil/Environmental Engineering + Surveying

CLIENT
**MAINE DEPARTMENT OF AGRICULTURE
CONSERVATION AND FORESTRY**
18 ELKINS LANE
AUGUSTA, MAINE 04330

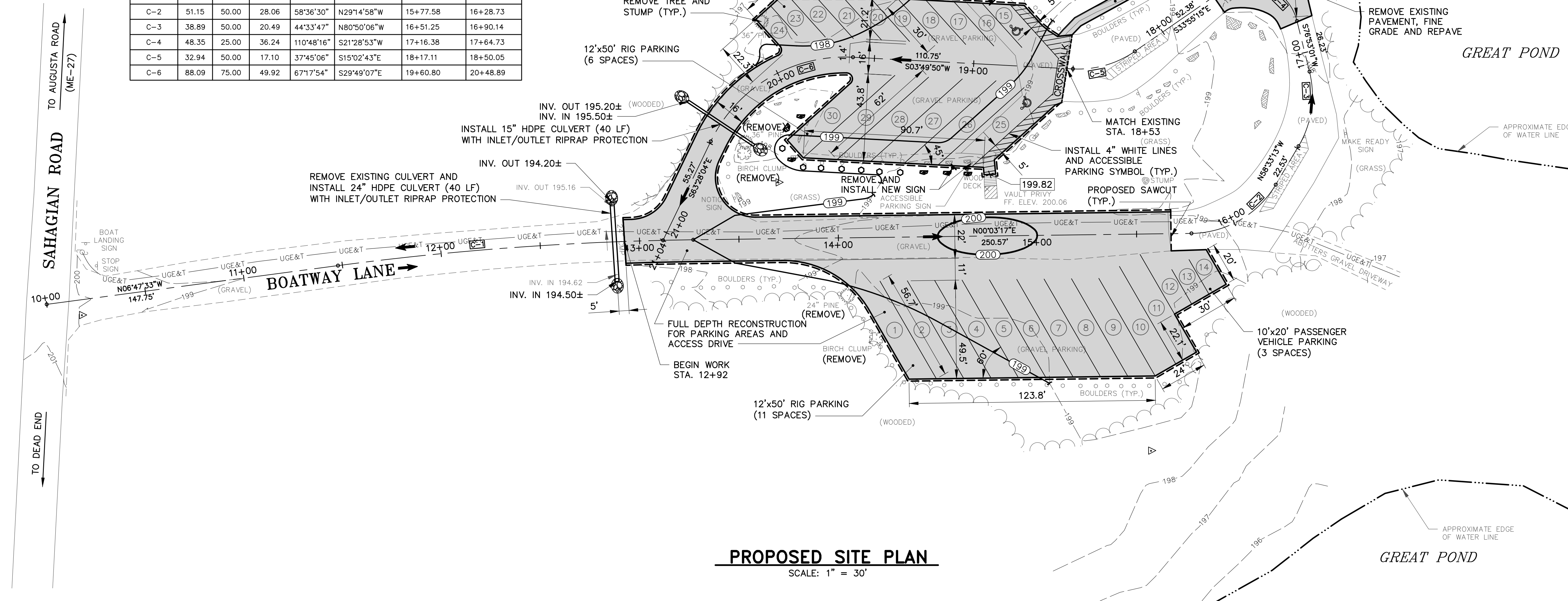
PROJECT
**GREAT POND BOATING FACILITY
PARKING IMPROVEMENTS**

TITLE
EXISTING CONDITIONS PLAN

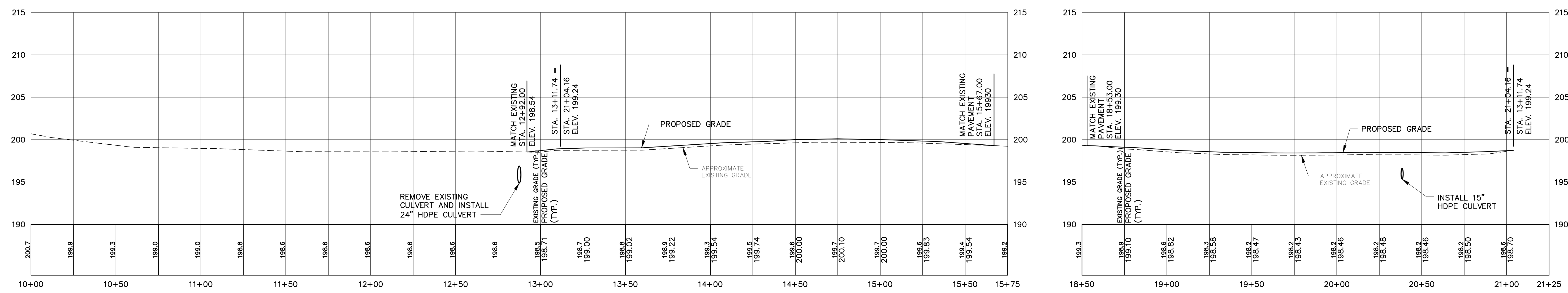
SCALE	AS SHOWN
PROJECT NO.	21009
DRAWING NO.	21009 exbase
SHT.	3 of 4
REV.	0



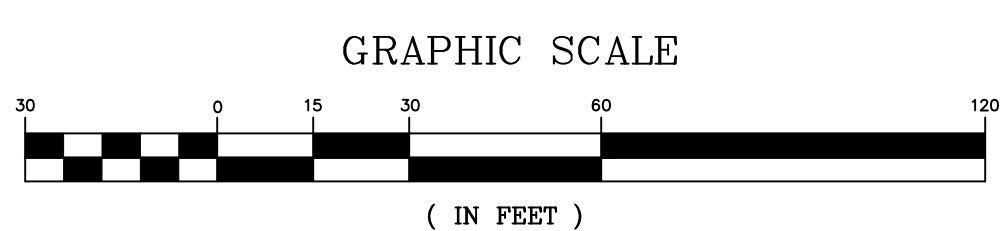
BASELINE CURVE TABLE							
CURVE NO.	LENGTH	RADIUS	TANGENT	DELTA	CHORD BEARING	START STATION	END STATION
C-1	179.26	1500.00	89.74	6°50'50"	N3°22'08"W	11+47.75	13+27.02
C-2	51.15	50.00	28.06	58°36'30"	N29°14'58"W	15+77.58	16+28.73
C-3	38.89	50.00	20.49	44°33'47"	N80°50'06"W	16+51.25	16+90.14
C-4	48.35	25.00	36.24	110°48'16"	S21°28'53"W	17+16.38	17+64.73
C-5	32.94	50.00	17.10	37°45'06"	S15°02'43"E	18+17.11	18+50.05
C-6	88.09	75.00	49.92	67°17'54"	S29°49'07"E	19+60.80	20+48.89



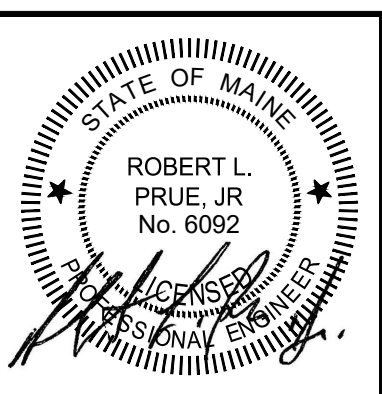
PROPOSED SITE PLAN
SCALE: 1" = 30'



PROPOSED PROFILE
SCALE: 1" = 30' HORIZ, 1" = 6' VERT.



REV	DATE	STATUS	BY	CHKD	APPD
0	6/11/2026	ISSUED FOR BIDDING	JET	RLP	RLP



DESIGNED BY: RLP
 DRAWN BY: DB/JET
 CHECKED BY: RLP
 APPROVED BY: RLP
 DATE: 6/11/2026

Pine Tree Engineering
 Civil/Environmental Engineering + Surveying
 53 Front Street
 Bath, Maine 04530
 Tel: (207) 443-1508
 Fax: (207) 442-7029

CLIENT
**MAINE DEPARTMENT OF AGRICULTURE
 CONSERVATION AND FORESTRY**
 18 ELKINS LANE
 AUGUSTA, MAINE 04330

PROJECT
**GREAT POND BOATING FACILITY
 PARKING IMPROVEMENTS**
 TITLE
**PROPOSED SITE PLAN
 AND PROFILES**

SCALE	AS SHOWN
PROJECT NO.	21009
DRAWING NO.	21009 site
SHT.	4 of 4
REV.	0

G:\Projects\2021\21009\dwg\21009_site.dwg 06/11/26 11:51am