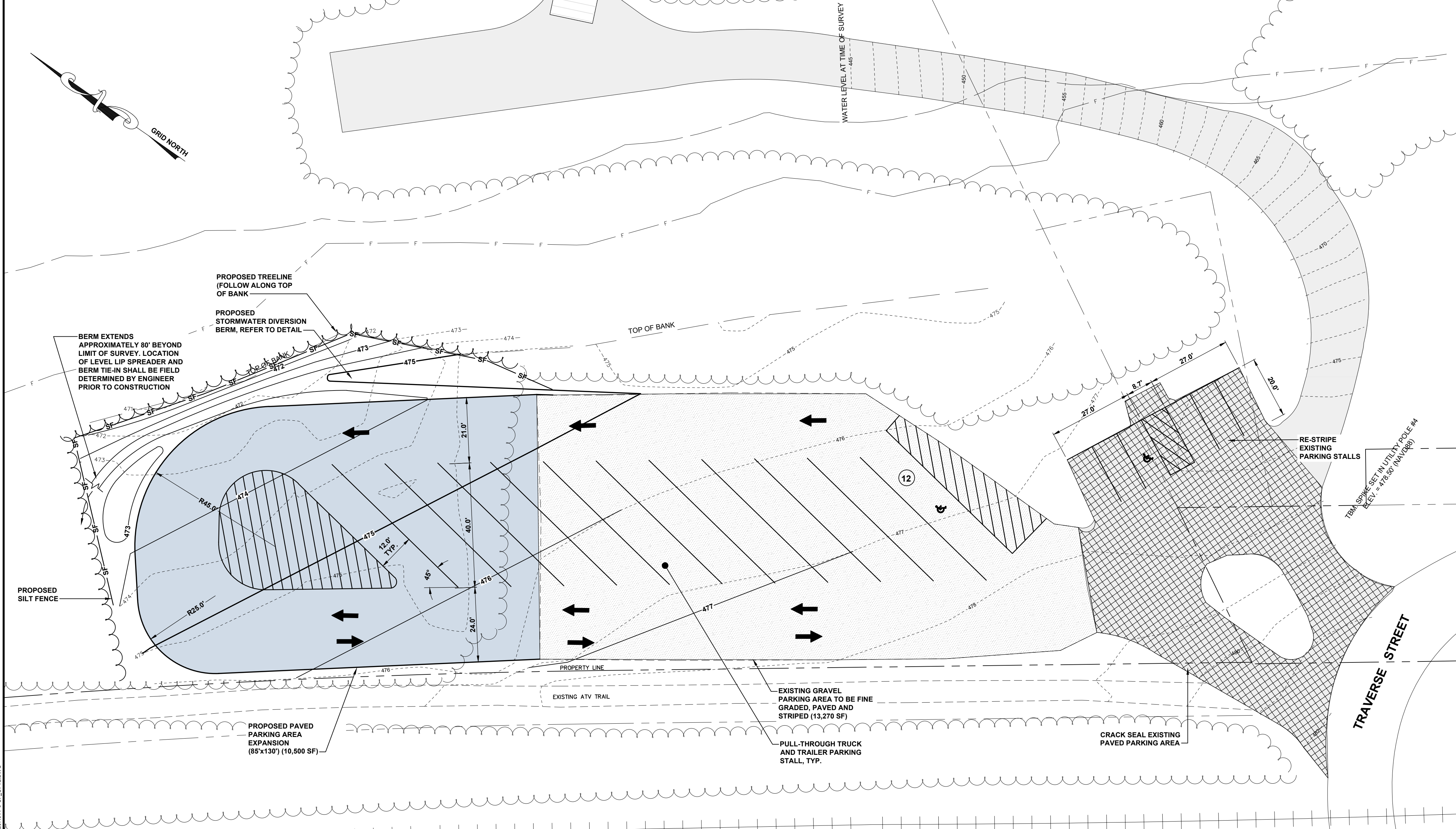


LOCATION MAP: COURTESY OF USA TOPO MAPS
SCALE: 1"=2000'



SURVEY NOTES

- THIS PLAN DEPICTS CONDITIONS FOUND AND SURVEYED BY CES INC. ON MAY 5, 2020.
- THIS SURVEY IS ORIENTED TO THE MAINE STATE PLANE COORDINATE SYSTEM, EAST ZONE, NAD83 DATUM (CORS96).
- ELEVATIONS REFER TO THE NORTH AMERICAN VERTICAL DATUM OF 1988 (NAVD88).
- CES, INC. HAS NOT INVESTIGATED THE EXISTENCE OR LOCATION OF SUBTERRANEAN UTILITY INFRASTRUCTURE.
- REFERENCE MADE TO PLAN TITLED "TOWN OF GRAND ISLE BOAT LAUNCH FACILITY, GRAND ISLE, MAINE, SITE LAYOUT PLAN" PREPARED BY WRIGHT-PIERCE, REVISED 6/22/12.
- CES, INC. WAS UNABLE TO LOCATE A SECTION OF THE PAVED ACCESS ROAD AND THE BOAT LAUNCH RAMP DUE TO HIGH WATER CONDITIONS AT TIME OF SURVEY. THEREFORE, A SECTION OF ROADWAY AND BOAT LAUNCH RAMP SHOWN ON THIS PLAN WERE DIGITIZED FROM THE REFERENCE LISTED IN THE NOTE ABOVE.
- PROPERTY LINES WERE DIGITIZED FROM BOUNDARY SURVEY PLAT PREPARED FOR THE TOWN OF GRAND ISLE AND THE STATE OF MAINE DEPARTMENT OF INLAND FISHERIES AND WILDLIFE OF THE RIVER FRONT ON PART OF ORIGINAL LOTS 195, 196 & 197 TOWNSHIP 13 RANGE 3 GRAND ISLE, PLAN BY PREPARED BY MATTHEW MACDONALD, OCTOBER 24, 2014. PROPERTY LINES SHOULD BE CONSIDERED APPROXIMATE.

LEGEND:

DESCRIPTION	EXISTING	PROPOSED
PROPERTY LINE	---	---
BENCHMARK	⊕	⊕
UTILITY POLE	⊕	⊕
SIGN	⊕	⊕
EDGE OF GRAVEL	---	---
EDGE OF PAVEMENT	---	---
MAJOR FOOT CONTOUR	--- 100 ---	--- 100 ---
MINOR FOOT CONTOUR	--- 98 ---	--- 98 ---
SILT FENCE	---	---
GRAVEL SURFACE	---	---
PAVED SURFACE (OVER EXISTING GRAVEL)	---	---
PAVED SURFACE (NEW CONSTRUCTION)	---	---
CRACK SEAL EXISTING PAVEMENT	---	---

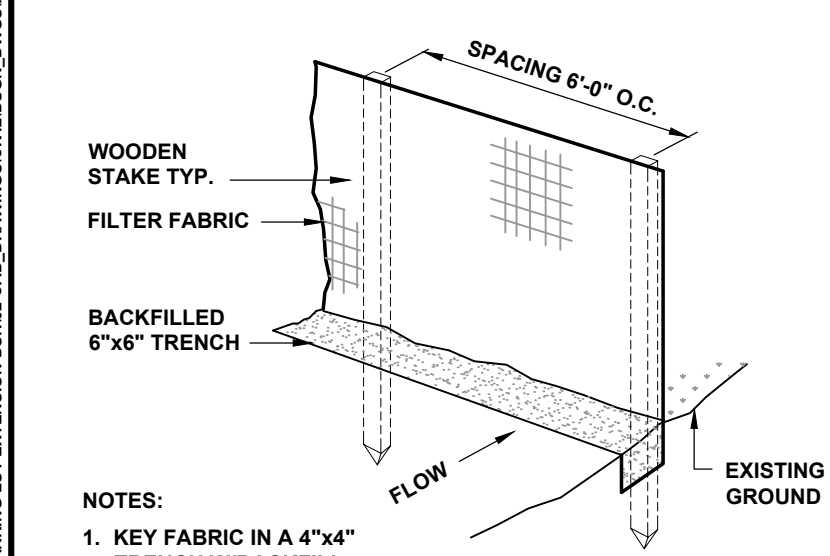
CONSTRUCTION NOTES

- PROPERLY PROTECT AND DO NOT DISTURB PROPERTY IRONS AND MONUMENTS. IF DISTURBED, THE PROPERTY MONUMENT WILL BE RESET AT THE CONTRACTOR'S EXPENSE, BY A REGISTERED LAND SURVEYOR APPROVED BY THE ENGINEER.
- CONTRACTOR SHALL PERFORM ALL CONSTRUCTION ACTIVITIES WITHIN THE CONFINES OF SUBJECT PROPERTY. ANY CONSTRUCTION ACTIVITY, MATERIAL STORAGE ETC., TAKING PLACE ON PRIVATE PROPERTY SHALL BE WITH THE EXPRESS WRITTEN PERMISSION OF THE OWNER.
- IF UNEXPECTED HAZARDOUS WASTE OR MATERIALS CONTAINING HAZARDOUS WASTE ARE ENCOUNTERED DURING CONSTRUCTION, THE CONTRACTOR SHALL IMMEDIATELY CEASE WORK AND CONTACT THE OWNER, ENGINEER, CONTRACTING OFFICER, AND DEP. WHEN A DEP APPROVED ACTION PLAN IS DETERMINED, WORK SHALL CONTINUE, AND ALL HAZARDOUS WASTE AND MATERIALS CONTAINING HAZARDOUS WASTE SHALL BE DISPOSED OF IN COMPLIANCE WITH THE APPROVED ACTION PLAN AND ALL APPLICABLE FEDERAL, STATE, AND LOCAL LAWS.
- THE CONTRACTOR SHALL PROVIDE ALL LABOR, EQUIPMENT, AND MATERIALS AS REQUIRED TO PERFORM THE WORK AS INDICATED ON THE DRAWINGS AND IN THE SPECIFICATIONS. ALL WORK SHALL BE COMPLETED IN ACCORDANCE WITH THE APPLICABLE FEDERAL, STATE AND LOCAL CODES.
- THE WORK SHALL INCORPORATE EROSION CONTROL MEASURES WHICH ARE COMPLIANT WITH THE LATEST VERSION OF "MAINE EROSION AND SEDIMENT CONTROL HANDBOOK FOR CONSTRUCTION: BEST MANAGEMENT PRACTICES".
- THE LOCATION, TYPE AND SIZE OF EXISTING PIPES, DUCTS, CONDUITS AND OTHER UNDERGROUND STRUCTURES SHOWN ON THE DRAWINGS ARE NOT WARRANTED TO BE EXACT NOR IS IT WARRANTED THAT ALL UNDERGROUND STRUCTURES ARE SHOWN. CONTRACTOR SHALL FIELD VERIFY ALL UTILITY LOCATIONS PRIOR TO COMMENCEMENT OF CONSTRUCTION.
- THE CONTRACTOR SHALL COORDINATE ALL CONSTRUCTION WITH THE TOWN, UTILITY COMPANIES, DIG SAFE, EMERGENCY SERVICES AND MAINE DEPARTMENT OF TRANSPORTATION (MDOT) WHERE APPLICABLE. CONTRACTOR SHALL NOTIFY ALL UTILITIES PRIOR TO COMMENCING WORK TO ALLOW SUFFICIENT TIME TO LOCATE AND MARK THE LOCATION OF ALL BURIED UTILITIES. CONTRACTOR SHALL ALSO CONTACT "DIG SAFE", TELEPHONE NO 800-225-4977. REPAIR OF ANY DAMAGED UTILITY WILL BE INCIDENTAL TO THIS PROJECT.
- WHEN APPLICABLE, CONTRACTOR SHALL MAINTAIN TRAFFIC IN A SAFE MANNER, IN ACCORDANCE WITH THE MANUAL ON UNIFORM TRAFFIC CONTROL DEVICES (MUTCD), LATEST EDITION, AT ALL TIMES DURING CONSTRUCTION. THE CONTRACTOR SHALL MAKE EVERY EFFORT TO MAINTAIN CONTINUOUS TRAFFIC FLOW DURING CONSTRUCTION.
- THE CONTRACTOR SHALL TAKE ALL NECESSARY PRECAUTIONS TO PREVENT EQUIPMENT FLUIDS FROM REACHING ANY WATER COURSE. ANY INADVERTENT FLUID DISCHARGES SHALL BE IMMEDIATELY CLEANED FROM THE WATERS USING WHATEVER MEANS NECESSARY, AS DETERMINED BY THE ENGINEER.
- RESTORE ALL AREA DISTURBED BY CONTRACTOR'S OPERATIONS TO ORIGINAL CONDITION (GRAVEL, PAVEMENT, GRASS, ETC.) UNLESS NOTED OTHERWISE IN PLANS. RESTORATION OF GRAVEL ROAD AND DRIVEWAY SURFACES AND LAWNS DAMAGED BY CONTRACTOR SHALL BE INCIDENTAL TO THE PROJECT.
- RESTRICT ACCESS TO SITE THROUGH THE USE OF APPROPRIATE SIGNAGE, GATES, BARRIERS, FENCES, ETC. SITE SHALL BE LEFT WITH APPROPRIATE SAFETY MEASURES IN PLACE DURING NON-WORKING HOURS. NO TRAFFIC SHALL BE LEFT OPEN DURING NON-WORKING HOURS. SITE SAFETY IS THE RESPONSIBILITY OF CONTRACTOR, DURING BOTH WORKING AND NON-WORKING HOURS.
- CONTRACTOR IS RESPONSIBLE FOR OBTAINING ALL NECESSARY CONSTRUCTION PERMITS. PERMIT APPLICATIONS SHALL BE SUBMITTED WITH ADEQUATE TIME SO AS NOT TO DELAY CONSTRUCTION.
- ALL FINISH SURFACES SHALL BE INSTALLED TO PROMOTE POSITIVE DRAINAGE. IN NO WAY SHALL THE NEW FINISH SURFACES AND CATCH BASINS CREATE DRAINAGE PROBLEMS THAT DID NOT EXIST PRIOR TO CONSTRUCTION.
- HOURS FOR THE PROJECT WILL BE MONDAY THROUGH FRIDAY, FROM 7:00 AM TO 7:00 PM, UNLESS OTHERWISE AUTHORIZED BY THE OWNER.

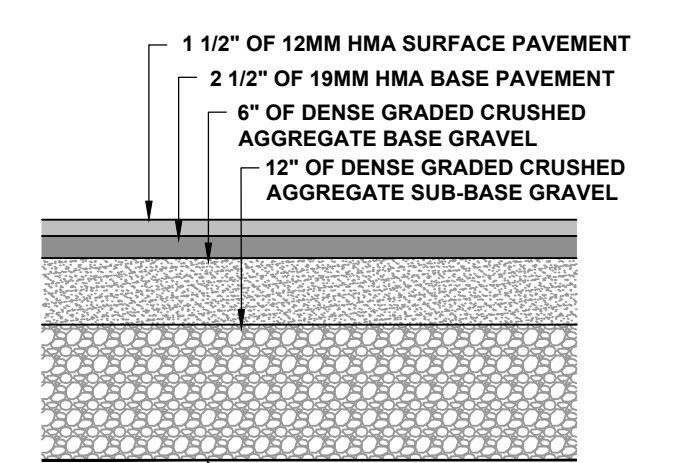
EROSION CONTROL NOTES

- ALL SEDIMENTATION AND EROSION CONTROL MEASURES SHALL BE IN ACCORDANCE WITH THE MAINE EROSION AND SEDIMENTATION CONTROL BEST MANAGEMENT PRACTICES (BMPs), PUBLISHED BY THE BUREAU OF LAND AND WATER QUALITY, MAINE DEPARTMENT OF ENVIRONMENTAL PROTECTION, LATEST EDITION.
- SILT FENCE WILL BE INSPECTED, REPLACED AND/OR REPAIRED IMMEDIATELY FOLLOWING ANY SIGNIFICANT RAINFALL OR SNOW MELT OR LOSS OF SERVICEABILITY DUE TO SEDIMENT ACCUMULATION. AT A MINIMUM, ALL EROSION CONTROL DEVICES WILL BE OBSERVED WEEKLY.
- DURING THE CONSTRUCTION PHASE, INTERCEPTED SEDIMENT WILL BE RETURNED TO CONSTRUCTION SITE.
- SEDIMENT CONTROL DEVICES SHALL REMAIN IN PLACE AND BE MAINTAINED BY THE CONTRACTOR UNTIL AREAS UPSLOPE ARE STABILIZED BY A SUITABLE GROWTH OF GRASS. ONCE A SUITABLE GROWTH OF GRASS HAS BEEN OBTAINED, ALL TEMPORARY EROSION CONTROL ITEMS SHALL BE REMOVED BY THE CONTRACTOR. ANY SEDIMENT DEPOSITS REMAINING IN PLACE AFTER THEY ARE REMOVED SHALL BE DRESSED TO CONFORM WITH THE EXISTING GRADE, PREPARED, SEEDED, AND MULCHED IMMEDIATELY.
- ALL DISTURBED AREAS WILL BE SEEDED WITH 2.5 LBS. RED FESCUE AND 0.5 LBS. RYE GRASS PER 1,000 SQUARE FEET AND MULCHED AT A RATE OF 90 LBS. PER 1,000 SQUARE FEET OR EQUIVALENT APPLICATION OF SEED AND MULCH.
- A SUITABLE BINDER SUCH AS CURASOL OR TERRTACK WILL BE USED ON THE HAY MULCH FOR WIND CONTROL.
- IF FINAL SEEDING OF DISTURBED AREAS IS NOT COMPLETED BY SEPTEMBER 15th OF THE YEAR OF CONSTRUCTION, THEN ON THAT DATE THESE AREAS WILL BE GRADED AND SEEDED WITH WINTER RYE AT THE RATE OF 112 POUNDS PER ACRE OR 3 POUNDS PER 1000 SQUARE FEET. THE RYE SEEDING WILL BE PRECEDED BY AN APPLICATION OF 3 TONS OF LIME AND 800 LBS. OF 19-20-20 FERTILIZER OR ITS EQUIVALENT. MULCH WILL BE APPLIED AT A RATE OF 90 POUNDS PER 1000 SQUARE FEET.
- IF THE RYE SEEDING CANNOT BE COMPLETED BY OCTOBER 1st OR IF THE RYE DOES NOT MAKE ADEQUATE GROWTH BY DECEMBER 1st, THEN ON THOSE DATES, HAY MULCH WILL BE APPLIED AT 150 POUNDS PER 1000 SQUARE FEET.
- INTERIOR SILT FENCES ALONG CONTOUR DIVIDING FLAT AND STEEP SLOPES, AREAS WITH DIFFERENT DISTURBANCE SCHEDULES, AROUND TEMPORARY STOCKPILES OR IN OTHER UNSPECIFIED POSSIBLE CIRCUMSTANCES SHOULD BE CONSIDERED BY THE CONTRACTOR. THE INTENT OF SUCH INTERIOR SILT FENCES IS TO LIMIT SEDIMENT TRANSPORT WITHIN THE SITE TOWARD THE PROTECTED CATCH BASIN INLETS TO MINIMIZE SEDIMENT REMOVAL REQUIRED BY THE EROSION CONTROL NOTE 9 PROTECTIONS AND EXTEND LIFE OF SUCH DEVICES.
- MINIMUM EROSION CONTROL MEASURES WILL NEED TO BE IMPLEMENTED AND THE CONTRACTOR WILL BE RESPONSIBLE TO MAINTAIN ALL COMPONENTS OF THE EROSION CONTROL PLAN UNTIL THE SITE IS FULLY STABILIZED. HOWEVER, BASED ON SITE AND WEATHER CONDITIONS DURING CONSTRUCTION, ADDITIONAL EROSION CONTROL MEASURES MAY NEED TO BE IMPLEMENTED. ALL AREAS OF INSTABILITY AND EROSION MUST BE REPAIRED IMMEDIATELY DURING CONSTRUCTION AND NEED TO BE MAINTAINED UNTIL THE SITE IS FULLY STABILIZED OR VEGETATION IS ESTABLISHED. A CONSTRUCTION LOG MUST BE MAINTAINED FOR THE EROSION AND SEDIMENTATION CONTROL INSPECTIONS AND MAINTENANCE.

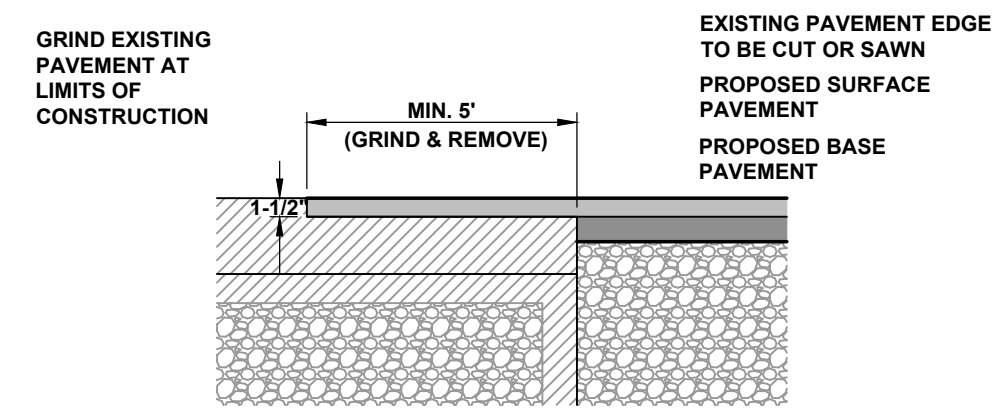
CONTRACTOR WILL BE RESPONSIBLE FOR FOLLOWING PROCEDURES FOUND IN THE "MAINE EROSION AND SEDIMENT CONTROL PRACTICES FIELD GUIDE FOR CONTRACTORS" (PUBLISHED MARCH 2015). THE PUBLICATION CAN BE FOUND AT: [HTTP://WWW.MAINE.GOV/DEPLAND/EROSION/ESCBMPS/INDEX.HTML](http://www.maine.gov/dep/land/erosion/escbmps/index.html)



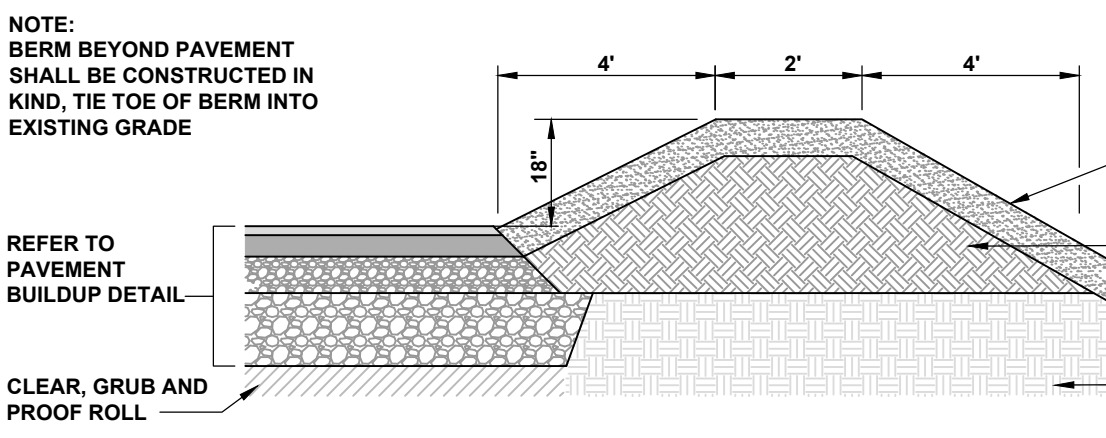
SILT FENCE DETAIL
N.T.S.



PAVEMENT BUILDUP DETAIL
N.T.S.

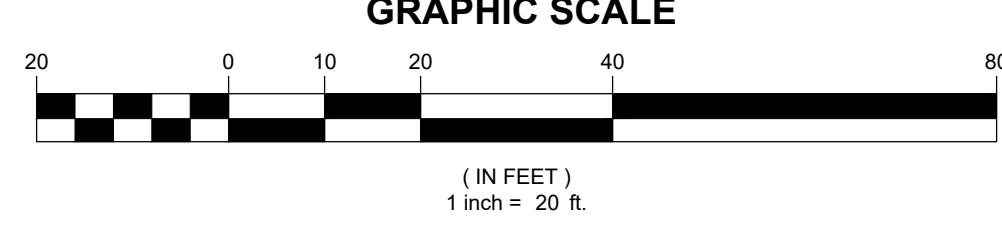


TYPICAL ASPHALT PAVEMENT GRINDING DETAIL
N.T.S.



TYPICAL DIVERSION BERM DETAIL
N.T.S.

PROPOSED SITE PLAN



www.cesincusa.com
Brewer
465 South Main Street
PO Box 639
Brewer, ME
T. 207-899-4824
F. 207-899-4881

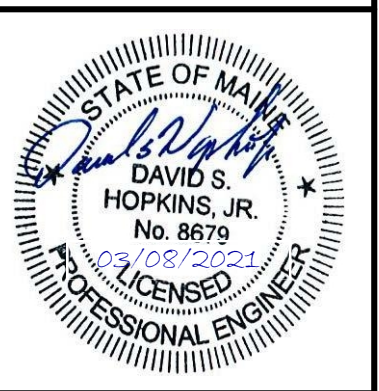
CES INC
Engineers • Environmental Scientists • Surveyors

PROJECT TITLE
BOAT LAUNCH PARKING LOT EXPANSION PROJECT
GRAND ISLE, AROOSTOOK COUNTY, MAINE

SHEET TITLE
PROPOSED SITE PLAN

NO.	DESCRIPTION	DATE	DESIGNED BY	CHECKED BY

FOR BIDDING



SCALE: 1"=20'

DATE: 2020.05.29

DRAWN BY: BLQ CHECKED BY: SMT

DESIGNED BY: BLQ APPROVED BY: DSH

JOB NUMBER: 10267.011

SHEET NUMBER: **C101**