

ROOM FINISH SCHEDULE												
C	NAME	FLOOR		WALLS				CEILING		ROOM NUMBER	COMMENTS	
		MATL	BASE	NORTH MATL	SOUTH MATL	EAST MATL	WEST MATL	MATL	HT			
303	STORAGE	VCT	RB	PTD	PTD	PTD	PTD	ACT	SEE RCP	303	EPOXY; REFER TO FINISH PLAN FOR INFORMATION ON VCT INSTALLATION PATTERN.	
304	OFFICE	CPT	RB	PTD	PTD	PTD	PTD	ACT	SEE RCP	304	EPOXY	
305	CLASSROOM 1	VCT	RB	PTD	PTD	PTD	PTD	ACT	SEE RCP	305	EPOXY;	
307	CORRIDOR	VCT	RB	PTD	PTD	PTD	PTD	ACT	SEE RCP	307	EPOXY; REFER TO FINISH PLAN FOR INFORMATION ON VCT INSTALLATION PATTERN.	
308	LAW LIBRARY	CPT	RB	PTD	PTD	PTD	PTD	ACT	SEE RCP	308	EPOXY	
314	LIBRARY	CPT	RB	PTD	PTD	PTD	PTD	ACT	SEE RCP	314	EPOXY	
318	OFFICE	CPT	RB	PTD	PTD	PTD	PTD	ACT	SEE RCP	318	EPOXY	
323	ART	VCT	RB	PTD	PTD	PTD	PTD	ACT	SEE RCP	323	EPOXY; REFER TO FINISH PLAN FOR INFORMATION ON VCT INSTALLATION PATTERN.	
325	STORAGE	VCT	RB	PTD	PTD	PTD	PTD	ACT	SEE RCP	325	EPOXY; REFER TO FINISH PLAN FOR INFORMATION ON VCT INSTALLATION PATTERN.	
338	CLASSROOM 2	VCT	RB	PTD	PTD	PTD	PTD	ACT	SEE RCP	338	EPOXY; REFER TO FINISH PLAN FOR INFORMATION ON VCT INSTALLATION PATTERN.	

WALL FINISH NOTES:

- REFER TO ROOM FINISH SCHEDULE ON THIS SHEET FOR ADDITIONAL INFORMATION REGARDING TYPE AND LOCATION OF FINISHES.
- REFER TO THE FINISH PLAN ON THIS SHEET FOR INFORMATION REGARDING LOCATION OF FLOOR FINISHES AND FLOOR FINISH PATTERNS.
- REFER TO INTERIOR ELEVATIONS AE210 FOR ADDITIONAL INFORMATION REGARDING WALL FINISHES AND WALL TILE PATTERNS.
- REFER TO SPECIFICATIONS FOR INFORMATION REGARDING SPECIFIED PAINT FINISHES (SHEEN).
- HVAC GRILLES OR DIFFUSERS MOUNTED ON GWB SHALL BE FIELD PAINTED TO MATCH COLOR OF WALL.
- ELECTRICAL PANELS LOCATED OUTSIDE OF ELECTRICAL ROOMS OR CLOSETS, SHALL BE FIELD PAINTED TO MATCH THE COLOR OF THE WALL ON WHICH IT IS MOUNTED.
- ALL WALLS NOT INDICATED TO RECEIVE AN ACCENT COLOR SHALL BE PTD-1.
- ALL HM DOORS TO BE PTD-7, UNLESS NOTED OTHERWISE.
- ALL HM FRAMES, TRIM AND RAILINGS TO BE PTD-3, UNLESS NOTED OTHERWISE.
- ALL GWS CEILINGS AND SOFFITS SHALL BE PTD-X, UNLESS NOTED OTHERWISE. REFER TO RCP (Insert Sheet Number) FOR ADDITIONAL INFORMATION REGARDING LOCATION OF SOFFITS.
- ALL WALL PAINTING TO BE DONE BY OTHERS UNLESS NOTED OTHERWISE.

INTERIOR FINISH ABBREVIATIONS:

- ACT ACOUSTIC CEILING TILE
- CPT CARPET
- PTD PAINTED
- RB RESILIENT WALL BASE
- RCP REFLECTED CEILING PLAN
- VCT VINYL COMPOSITION TILE

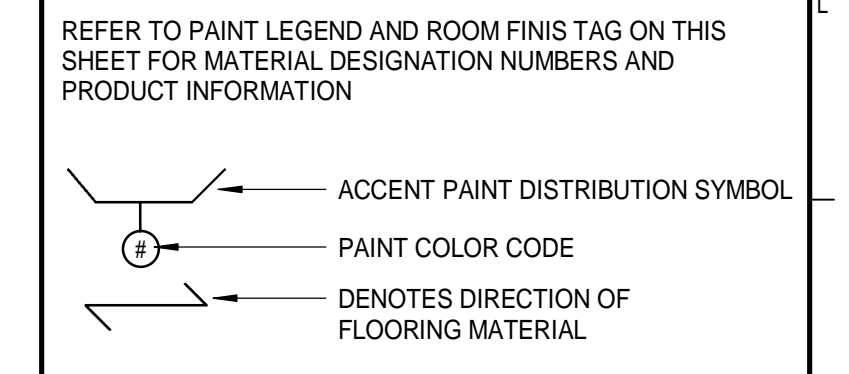
FINISH LEGEND:

- ACOUSTIC CEILING TILE**
ACT-1: ARMSTRONG CEILING SOLUTIONS, FINE FIGURED, 24X24-INCH SQUARE LAY-IN # 1728, 15/16-INCH METAL GRID SYSTEM, FINISH: FINE TEXTURED, COLOR: WHITE.
- CARPET (SHEET)**
CPT-1: MOHAWK GROUP, STYLE: FACULTY REMX GL154, COLOR: 989 GREATEST CHARCOAL.
- PAINT (PAINTED BY OTHERS)**
PTD-1: SHERWIN WILLIAMS, COLOR: NEUTRAL GROUND (FIELD) (TO MATCH EXISTING).
PTD-2: SHERWIN WILLIAMS, COLOR: BLUE HERON (TO MATCH EXISTING).
PTD-3: SHERWIN WILLIAMS, COLOR: SHALE GRAY (TO MATCH EXISTING).
PTD-4: SHERWIN WILLIAMS, COLOR: POSH YOYAGE (TO MATCH EXISTING).
PTD-5: SHERWIN WILLIAMS, COLOR: EDWARDIAN GREEN (TO MATCH EXISTING).
PTD-6: SHERWIN WILLIAMS, COLOR: BLUE BLAZER (TO MATCH EXISTING).
PTD-7: SHERWIN WILLIAMS, COLOR: CINNABAR (TO MATCH EXISTING).
- RESILIENT BASE**
RB-1: TARKETT, 4H TRADITIONAL BASE WITH TOE, COLOR: MATCH EXISTING (GRAY).
- VINYL COMPOSITION TILE**
VCT-1: ARMSTRONG, STYLE: STANDARD EXCELOX, COLOR: PEBBLE TAN S1928, (FIELD)
VCT-2: ARMSTRONG, STYLE: STANDARD EXCELOX, COLOR: SILVER GREEN, (ACCENT)
VCT-3: ARMSTRONG, STYLE: STANDARD EXCELOX, COLOR: CYPRESS, (ACCENT)
VCT-4: ARMSTRONG, STYLE: STANDARD EXCELOX, COLOR: DOESKIN PEACH, (ACCENT)
VCT-5: ARMSTRONG, STYLE: STANDARD EXCELOX, COLOR: TBD, (ACCENT)

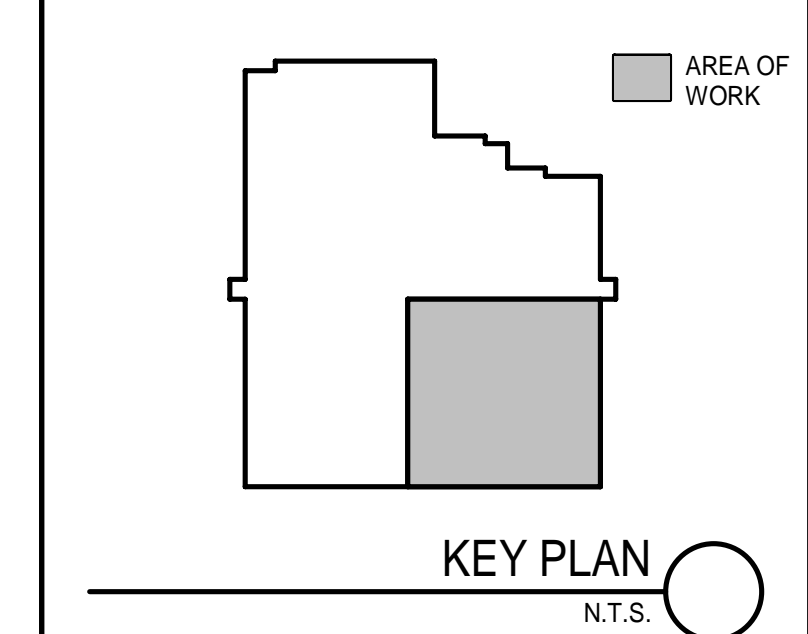
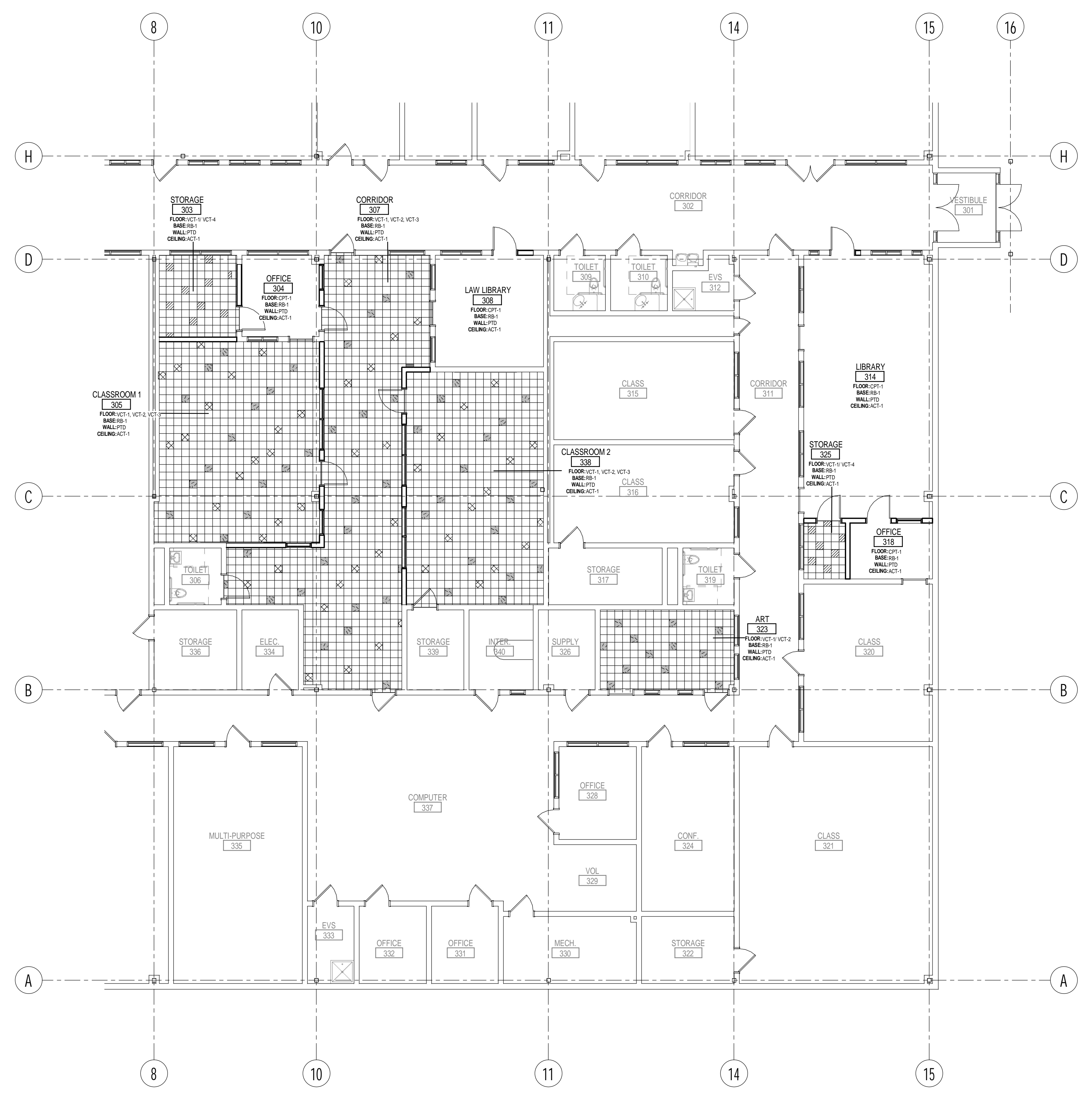
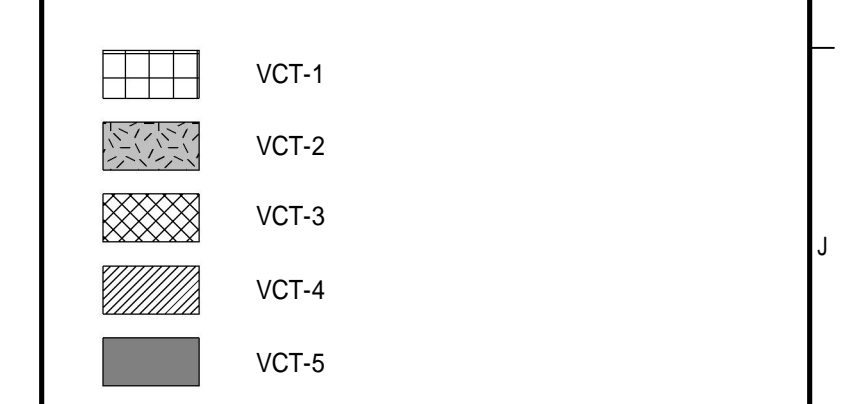
FLOOR FINISH NOTES:

- REFER TO THIS SHEET FOR LAYOUT OF FLOOR FINISH MATERIALS AND THE FINISH LEGEND FOR ACTUAL MATERIALS USED.
- REFER TO FINISH PLAN ON THIS SHEET FOR INFORMATION REGARDING LOCATIONS OF PAINTED ACCENT WALLS AND OTHER WALL APPLIED FINISHES.
- REFER TO SPECIFICATIONS FOR INFORMATION REGARDING RESILIENT TRANSITIONS, THRESHOLDS, METAL EDGE STRIPS AND OTHER FLOORING ACCESSORIES.
- FLOORING TO RUN BENEATH CASEWORK, UNLESS NOTED OTHERWISE.
- REFER TO SPECIFICATIONS FOR INFORMATION REGARDING CARPET INSTALLATION.

FINISH SYMBOL LEGEND:



FLOOR FINISH LEGEND:



REV	DESCRIPTION	DATE
1	ADDENDUM 02	11-2-20
0	ISSUED FOR BID	10-21-20

ADDENDUM 02
11-2-20

CURRENT ISSUE STATUS:

PROJECT NORTH:

MAINE STATE PRISON DORIS BUFFET HIGHER EDUCATION CENTER RENOVATIONS
807 Cushing Rd. Warren, ME 04864

FINISH PLAN

SHEET TITLE:

SCALE: AS NOTED

PROJECT MANAGER: JGJ	PROJECT NO: 20560
A/E OF RECORD: JGJ	
JOB CAPTAIN: BLS	
DRAWN BY: KPP	
SMRT FILE: ID100-20560	SHEET NO. ID100

LEVEL 1 - FINISH PLAN
1/8" = 1'-0" (A3)