

**ADDENDUM NO. 3
TO
CONTRACT & SPECIFICATIONS**

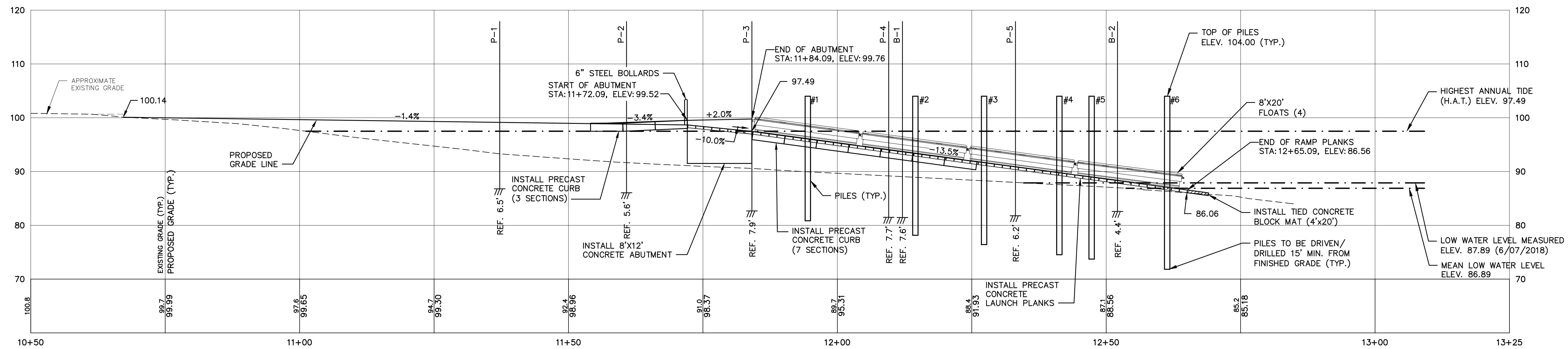
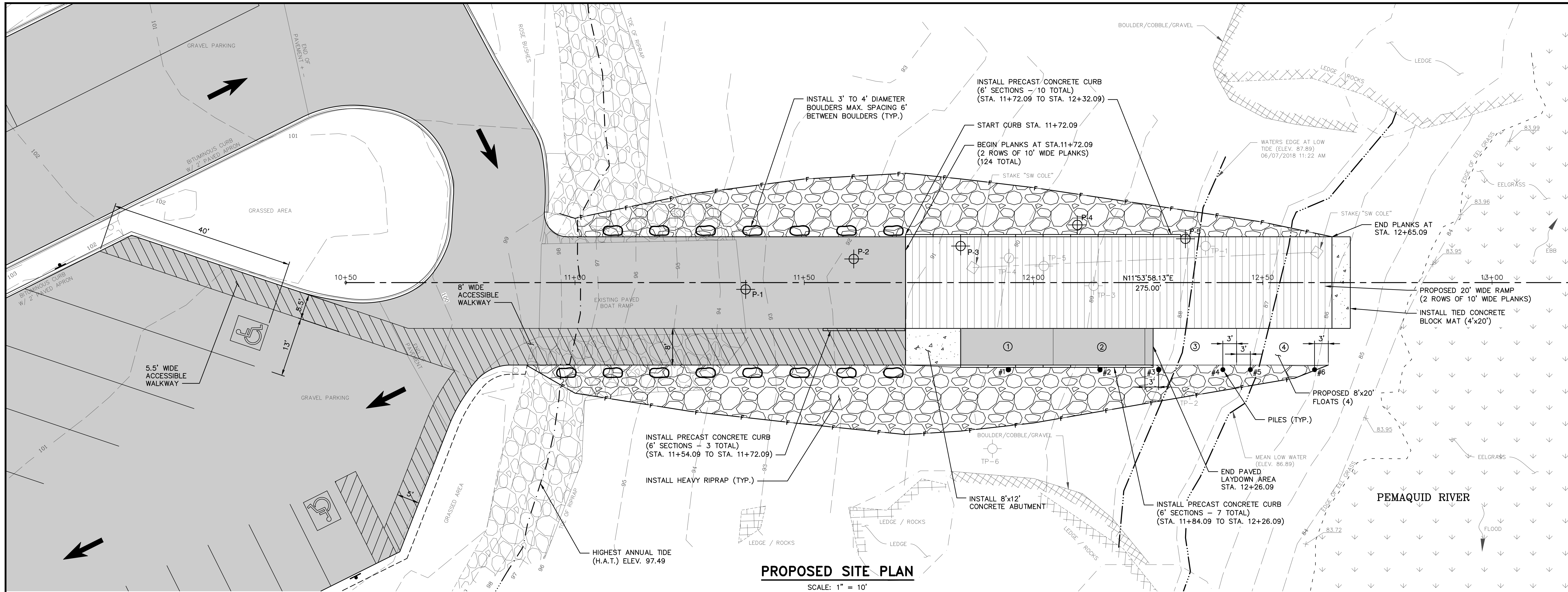
**COLONIAL PEMAQUID BOATING FACILITY RENOVATIONS
BRISTOL, MAINE**

June 14, 2022

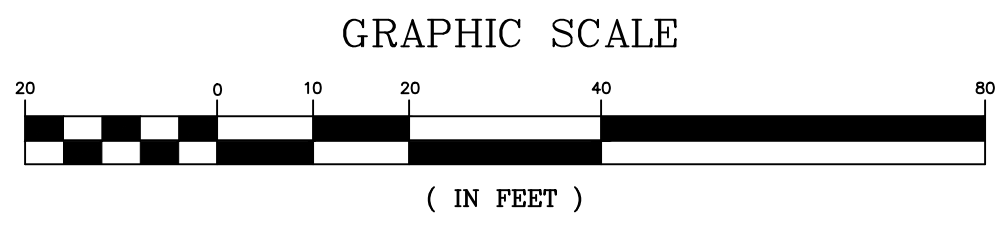
The following changes have been made to the **PLANS**:

1. **SHEET 5 of 8: DELETE** plan sheet and **ADD** revised plan sheet (attached).
The 3 member dolphin piles have been replaced with four single piles increasing the total number of piles to six.
2. **SHEET 7 of 8: DELETE** the “TYP. 3 – PILE DOLPHIN DETAIL”.
3. **SHEET 7 of 8:** On the “TYP. BOAT RAMP FLOAT GUIDE PILES DETAIL”
DELETE “10” O.D.” and **ADD** “12” O.D.” for the pile diameter.
4. **SHEET 8 of 8: DELETE** “SLIPFORM CONCRETE CURB DETAIL” and **ADD**
the attached “SLIPFORM CONCRETE CURB DETAIL”.
5. **SHEET 8 of 8:** On the “TYPICAL RAMP END SECTION” detail, the tied concrete
block mat shall be Shoreblock SD-600-OC manufactured by Shoretec.

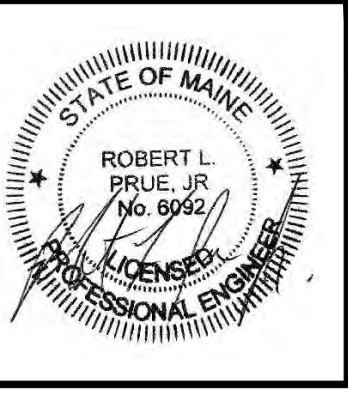
**PINE TREE
ENGINEERING**



PROPOSED PROFILE
SCALE: 1" = 10' HORIZ., 1" = 10' VERT.



REV	DATE	STATUS	BY	CHKD	APPD
1	6/14/2022	REVISED PILE LAYOUT	DB	RLP	RLP
0	5/18/2022	ISSUED FOR BIDDING	DB	RLP	RLP



DESIGNED BY: RLP
 DRAWN BY: DB
 CHECKED BY: RLP
 APPROVED BY: RLP
 DATE: 5/18/2022

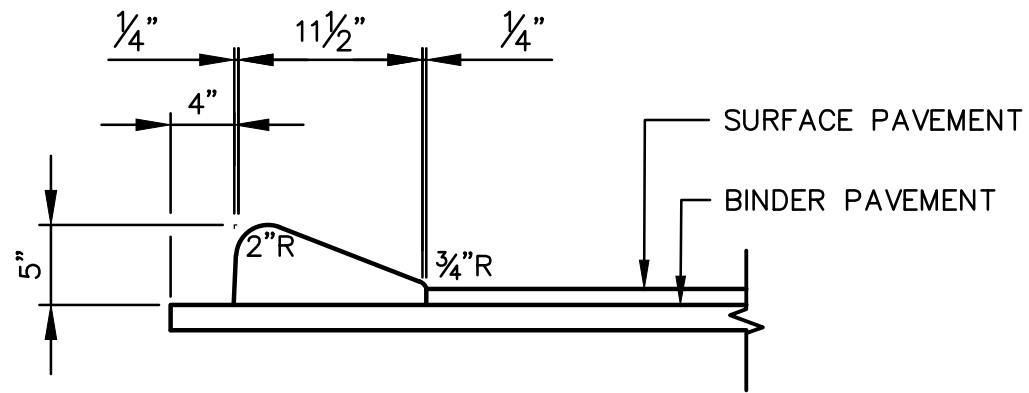
Pine Tree Engineering
 53 Front Street
 Bath, Maine 04530
 Tel: (207) 443-1508
 Fax: (207) 442-7029
 Civil/Environmental Engineering • Surveying

CLIENT
**MAINE DEPARTMENT OF AGRICULTURE,
 CONSERVATION AND FORESTRY**
 18 ELKINS LANE
 AUGUSTA, MAINE 04330

PROJECT
**COLONIAL PEMAQUID
 BOATING FACILITY RENOVATIONS
 BRISTOL, MAINE**
 TITLE
**PROPOSED RAMP
 PLAN AND PROFILE**

SCALE	AS SHOWN
PROJECT NO.	17002
DRAWING NO.	17002-site.dwg
SHT.	5 of 8
REV.	1

C:\Users\jgano\Dropbox\DCS-Projects\Pine Tree Engineering\Bristol\17002-site.dwg



SLIPFORM CONCRETE CURB DETAIL

SCALE: 1" = 1'-0"