

INTEGRATED PEST MANAGEMENT

Grades 2 & 3 Curriculum



Helpful and Harmful Insects
Picture Card Set



Photo By Scott Bauer, USDA ARS, www.forestryimages.org

Helpful or Harmful

CARPENTER ANTS

**...are large black insects that nest
in wood.**



University of Connecticut Integrated Pest Management





Photo By Joseph Berger, www.forestryimages.org

Helpful or Harmful

LADYBUGS

**...eat harmful insects but can be
a nuisance when they swarm on
buildings and even inside homes.**



University of Connecticut Integrated Pest Management





All images courtesy of www.elbosquenuevo.org

Helpful or Harmful

BUTTERFLIES

...are beautiful insects that sip nectar and pollinate flowers.



University of Connecticut Integrated Pest Management





Photo By Kevin Noonan

Helpful or Harmful

SPIDERS

**...eat aphids and other insects.
They are arachnids and have eight
legs.**



University of Connecticut Integrated Pest Management





Photo By Scott Bauer, USDA ARS, www.forestryimages.org

Helpful or Harmful

HONEYBEES

**...may sting, but they also make
food that humans eat.**



University of Connecticut Integrated Pest Management



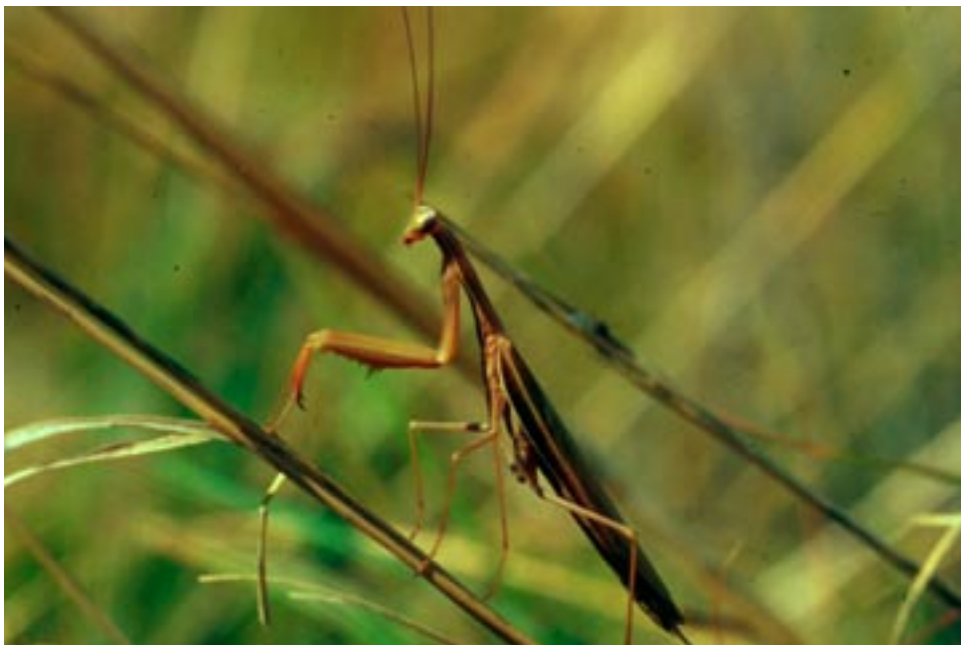


Photo By Whitney Cranshaw, Colorado State University, www.forestryimages.org

Helpful or Harmful

PRAYING MANTIS

**...is the state insect of
Connecticut. Not only pests are
at risk, but helpful insects and
spiders are at risk of being eaten
as well.**



University of Connecticut Integrated Pest Management





Photo By Susan Ellis, www.forestryimages.org

Helpful or Harmful

DRAGONFLIES

**...also known as mosquito hawks,
aid in the control of these blood
sucking pests.**



University of Connecticut Integrated Pest Management





Photo By Alton N. Sparks, Jr., The University of Georgia, www.forestryimages.org

Helpful or Harmful

GREEN LACEWINGS

**...feed on the honeydew produced
by aphids.**



University of Connecticut Integrated Pest Management





Photo By Whitney Cranshaw, Colorado State University, www.forestryimages.org

Helpful or Harmful

MINUTE PIRATE BUGS

**...are a welcome garden guest and
foe to aphids, mites, immature
scales and thrips.**



University of Connecticut Integrated Pest Management





Photo By Arnold T. Drooz, USDA Forest Service, www.forestryimages.org

Helpful or Harmful

PARASITIC WASPS

**...may sting, but they also kill
harmful insects.**



University of Connecticut Integrated Pest Management





Photo By Scott Bauer, USDA ARS, www.forestryimages.org

Helpful or Harmful

FRUIT FLIES

...are tiny insects that lay their eggs in decaying fruit in homes, grocery stores and delivery trucks.



University of Connecticut Integrated Pest Management





Photo By Clemson University, www.forestryimages.org

Helpful or Harmful

COCKROACHES

**...eat almost anything.
They like the dark, and it's hard to
get rid of them.**



University of Connecticut Integrated Pest Management





Helpful or Harmful

APHIDS

...harm plants by sucking sap.





Photo By Lance S. Risley, William Paterson University, www.forestryimages.org

Helpful or Harmful

MAGGOTS

**...the larval stage of flies, use
decaying plant and animal
material for food.**



University of Connecticut Integrated Pest Management





Photo By Edward L. Barnard, www.forestryimages.org

Helpful or Harmful

GRUBS

**...are unwelcome pests to lawns
because they feed on vegetation
roots.**



University of Connecticut Integrated Pest Management





Photo By Clemson University, www.forestryimages.org

Helpful or Harmful

BEETLES

**...feed on the roots and
leaves of many different kinds
of plants.**



University of Connecticut Integrated Pest Management





Photo By Joseph Berger, www.forestryimages.org

Helpful or Harmful

HOUSE FLIES

...spread germs with their feet.



University of Connecticut Integrated Pest Management





Photo By Edward L. Manigault, www.forestryimages.org

Helpful or Harmful

MOTHS

...are attracted to light. As larvae they eat holes in clothing and plants.



University of Connecticut Integrated Pest Management





Photo By Michael Montgomery, USDA Forest Service, www.forestryimages.org

Helpful or Harmful

WOOLLY ADELGIDS

**...attack several species of
hemlock.**



University of Connecticut Integrated Pest Management





Susan Ellis, www.forestryimages.org

Helpful or Harmful

DAMSELFLIES

...are wetland insects that inhabit lakes and slow moving streams. They feed on other small aquatic insects.



University of Connecticut Integrated Pest Management





Photo By Jim Occi, BugPics, www.forestryimages.org

Helpful or Harmful

MOSQUITOES

**...give itchy bites.
Bats and dragonflies eat them.**



University of Connecticut Integrated Pest Management





Photo By James Castner, University of Florida

Helpful or Harmful

FLEAS

...bite people and their pets. Use a vacuum cleaner to get rid of them.



University of Connecticut Integrated Pest Management



Contents

Helpful and Harmful Insects Picture Card Set

Carpenter Ants	Fruit Flies
Ladybugs	Cockroaches
Butterflies	Aphids
Spiders	Maggots
Honeybees	Grubs
Praying Mantis	Beetles
Dragonflies	House Flies
Green Lacewings	Moths
Minute Pirate Bugs	Woolly Adelgids
Parasitic Wasps	Mosquitoes
Damselflies	Fleas

