

Orient Unit Management Plan

Maine Department of Agriculture, Conservation and Forestry
Bureau of Parks and Lands

Virtual Public Meeting
September 17, 2020



FINAL DRAFT PLAN REVIEW

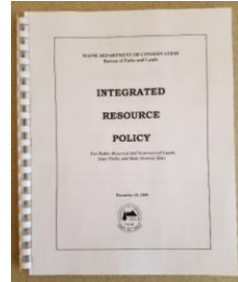


Agenda

- BPL Planning summary
- Orient Unit Planning Process
- Review of Final Draft Plan
 - Background on acquisition of Unit and resources present
 - Vision, Dominant Resource Use Allocations and Management Recommendations
- Questions and Comments
- Next Steps

Legislative Direction and Policy

- Management plans legislatively required for Public Lands (12 MRSA 1833 & 1847)
- Legislative direction includes:
 - “multiple use”
 - “sustained yield of products and services”
 - “sound planning”
 - “exemplary land management practices”
- Management to enhance “timber, wildlife, recreation, economic and other values of lands”
- Plans are prepared in accordance with the guidelines contained in the ***Integrated Resource Policy*** (IRP)



BPL Management Plans

- Plans have a lifespan of 15 years with 5 year reviews
- Plans are regional—one plan includes several public lands in a region
 - WBPR Unit is new addition to Central Penobscot Region (CPR)
 - CPR Plan was adopted in 2014
- We look at planning context of the larger region
- Assisted by an Advisory Committee for the region representing a diverse range of organizations and interests

Management Plan Purposes and Content



- **Purposes of the Management Plan:**
 - Identify and Protect important natural, ecological and historical attributes
 - Enhance important fisheries and wildlife habitat
 - Provide opportunities for a variety of quality outdoor recreation experiences
 - Provide a sustained yield of forest products by utilizing forest management techniques and silvicultural practices that enhance the forest environment
- **Core of the Plan:**
 - Vision statement
 - Dominant Resource Allocations (detailed in the IRP)
 - Management recommendations

Resource Allocation System



- **A hierarchical system**
 - Most to least scarce and/or sensitive to management activities
- **7 Categories**
 - Special Protection (natural areas, historic/cultural areas, ecological reserves)
 - Backcountry Recreation (non-mechanized, motorized)
 - Wildlife Management
 - Remote Recreation
 - Visual Consideration (Class I and II)
 - Developed Recreation (Class I and II)
 - Timber Management

Planning Process



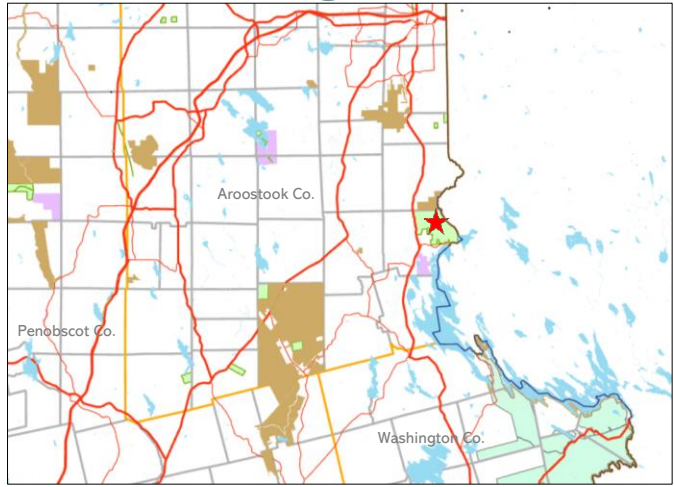
- Summer 2019 - Began work on Draft Plan
 - Made use of data compiled during the acquisition of the unit
 - Field visits by Bureau staff before and after acquisition
- October 2019 - First Draft Plan sent to Advisory Committee for review and comment
- Fall/Winter 2019-20 – Revised plan based on comments
- January 2020 – Final Draft Plan sent to Advisory Committee
- September 2020 – Public Meeting to review and take comments
- Fall 2020 – Finalize Plan, append to Eastern Interior Region Plan after adoption

Acquisition of the Unit

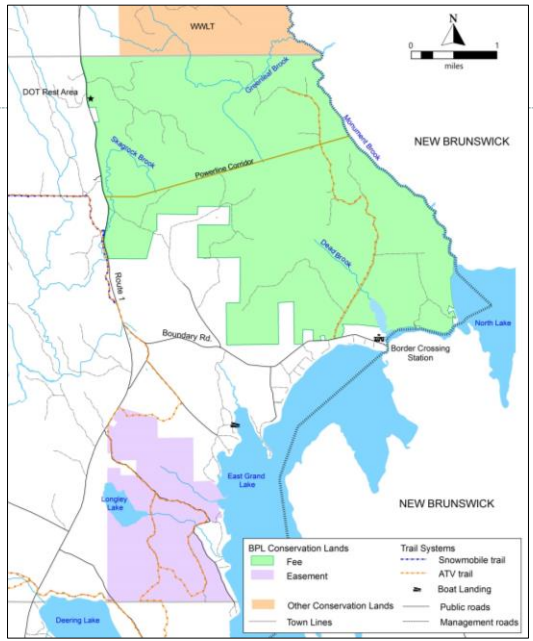


- **East Grand-Orient Project**
 - Acquired in March 2016 from The Conservation Fund
 - Conservation easement on nearly 1,500 acres of working forest land south of unit owned by The Conservation Fund
- Acquisition was supported by numerous entities and was funded in part through the federal Forest Legacy Program and by the state Land for Maine's Future (LMF) program
- Forestry Legacy Program prohibits conversion of the property to non-forest uses
- LMF Program requires the property to remain available for recreation, wildlife habitat, and ecological function

Orient Unit Location



Orient Unit and Vicinity

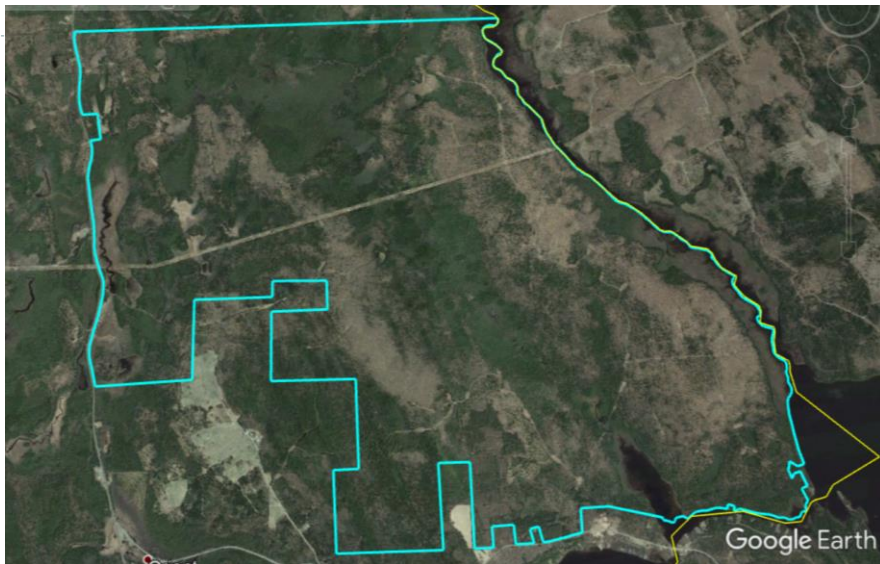


Natural Resources

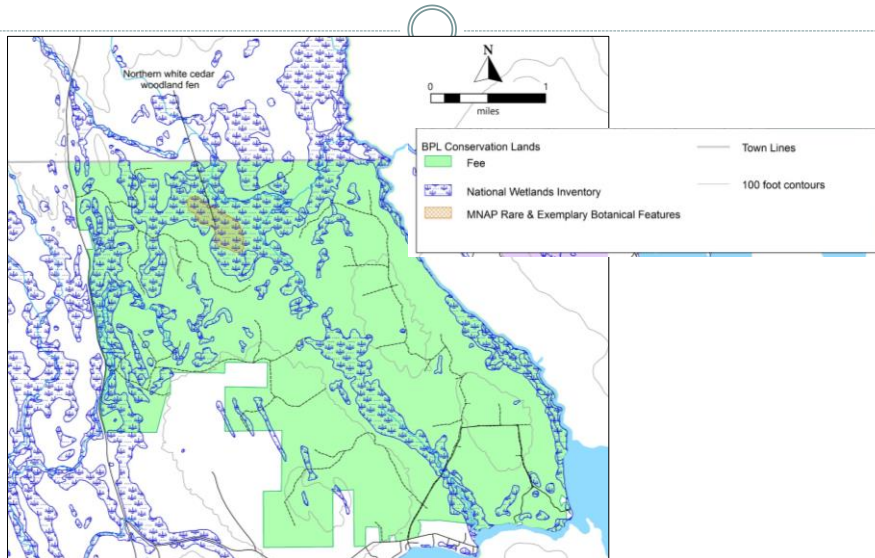


- 5,992 acres of primarily forested land
 - A mix of forest types, about 50% softwood, 30% mixedwood, 20% hardwood
 - 1,000+ acres dominated by cedar, of low quality
 - 716 non-forest acres
- 2 miles of frontage on The Throughfare and North Lake
- 4 miles of frontage on Monument Brook
- ~1,200 acres of wetlands, including ~1,000 acre Greenwood Brook complex with a variety of fen, swamp, meadow and marsh
- ~70 acre open cedar fen mapped by Maine Natural Areas Program (MNAP); potentially additional fen area and enriched northern hardwood forest (pending additional surveys)

Aerial Imagery



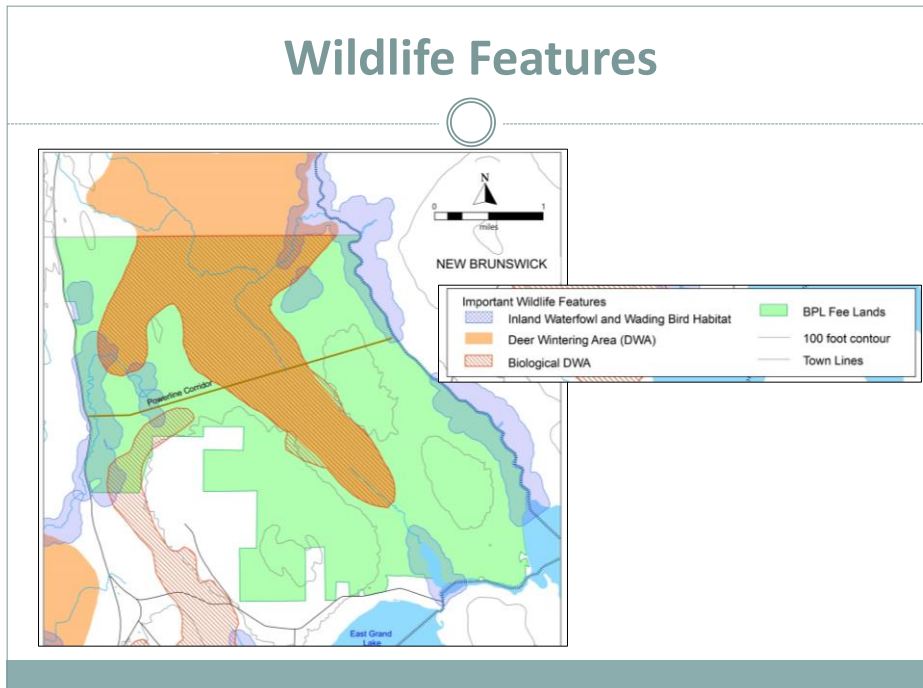
Wetlands & MNAP-mapped Feature



Wildlife Features

- ~1,700 acres of a large deer wintering area (DWA) lies across the central part of the unit
- Part of more recently mapped biological deer wintering area (BDWA) to south extends onto unit
- ~800 acres of mapped inland waterfowl and wading bird habitat
- 4 species of Special Concern (3 birds, 1 amphibian) observed in Greenleaf Brook wetland area
- Vernal pools are unmapped but are numerous

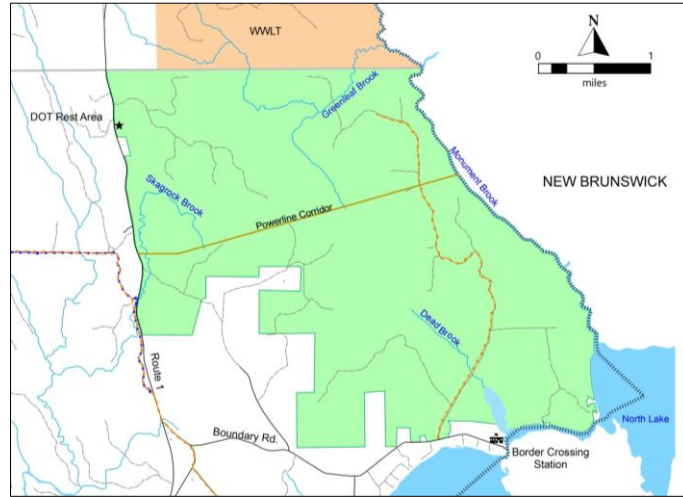
Wildlife Features



Access & Recreation

- Access via State Route 1 and Boundary Road
- Two primary management roads (Picnic Area Road, North Lake/Monument Brook Road) are in good condition
 - Emera Maine recently rebuilt and otherwise improved roads for powerline access
- No developed recreation facilities
- Designated ATV route follows North Lake/Monument Brook Road up the east side of the Unit

Orient Unit Access and Recreation Features



North Lake and Monument Brook



General Vision for the Unit



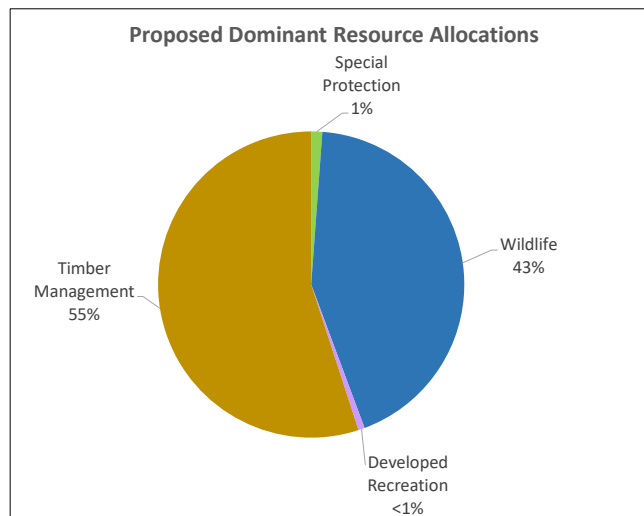
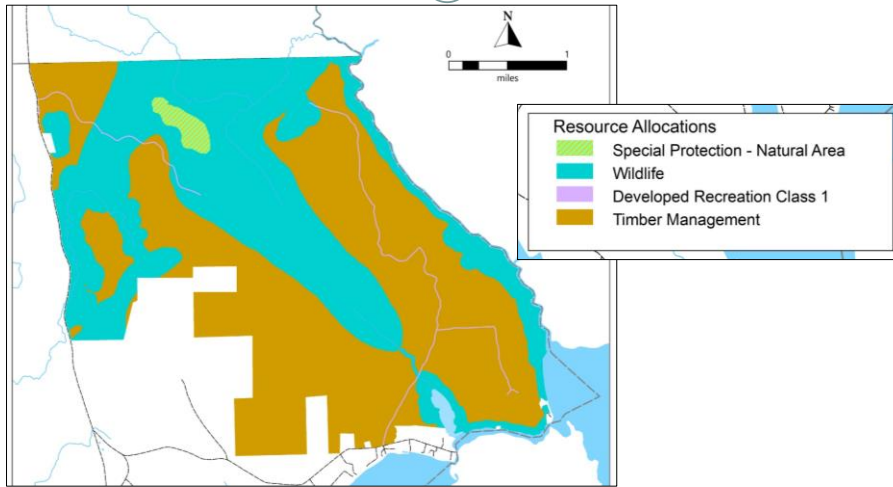
- Protect ecological values associated with Monument Brook and extensive wetlands (incl. exemplary open cedar fen)
- Cooperative management with IF&W of the mapped BDWA/DWAs
- Accommodate dispersed recreation experiences (camping, fishing, and hunting), ATV access, potentially boating
- Manage about half of the unit primarily for timber, emphasizing high value forest products, while providing a variety of wildlife habitats and protecting other significant resources

Dominant Resource Allocations



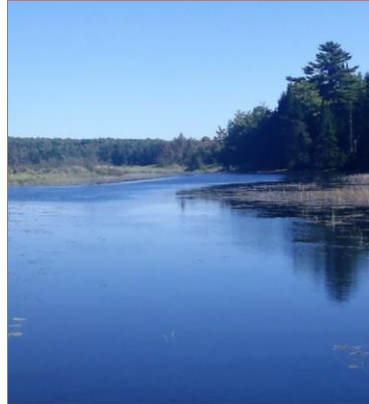
- Summary of allocations:
 - Special Protection allocation applied to the exemplary cedar fen community; may expand to other areas pending further surveys
 - Wildlife allocation protects wetlands and other riparian areas
 - Developed Recreation allocation is applied to management road corridors
 - Timber Management allocation continues the historical emphasis on timber production on the parcel, with appropriate visual, recreation, and wildlife considerations.

Proposed Dominant Resource Allocations



Management Recommendations

- **Wildlife:**
 - Develop agreement with IF&W for management of BDWAs/DWAs; may cooperate with others on management
- **Recreation:**
 - Consider development of carry-in boat access to North Lake or Monument Brook



Monument Brook at confluence with Greenleaf Brook (courtesy of Elbridge Cleaves)

Timber Management

- Program to improve timber quality on the unit, with the overall objectives of growing high value timber products while maintaining visual integrity and enhancing the diversity of wildlife habitat
- Cooperative Agreement with IF&W will provide additional guidelines for management in the BDWAs/DWAs
- Due to modest stocking, unlikely that major harvests will occur during this 5 year Plan period or the succeeding 5 years
- Potential for harvests designed for DWA enhancement, which may include additional small areas

Comments and Questions?



Skagrock Brook wetland near Rt. 1

Next Steps



- BPL will work to finalize the Plan over the next few months
- In addition to comments provided here, all are welcome to comment during the next two weeks, via a phone call or in writing (email or regular mail)

Jim Vogel
18 Elkins Lane, Harlow Building
22 State House Station
Augusta ME 04333-0022

Jim.vogel@maine.gov
207-287-2163

Thank You!



Aerial view looking south across Unit from confluence of Monument Brook with Greenleaf Brook (courtesy of Elbridge Cleaves)