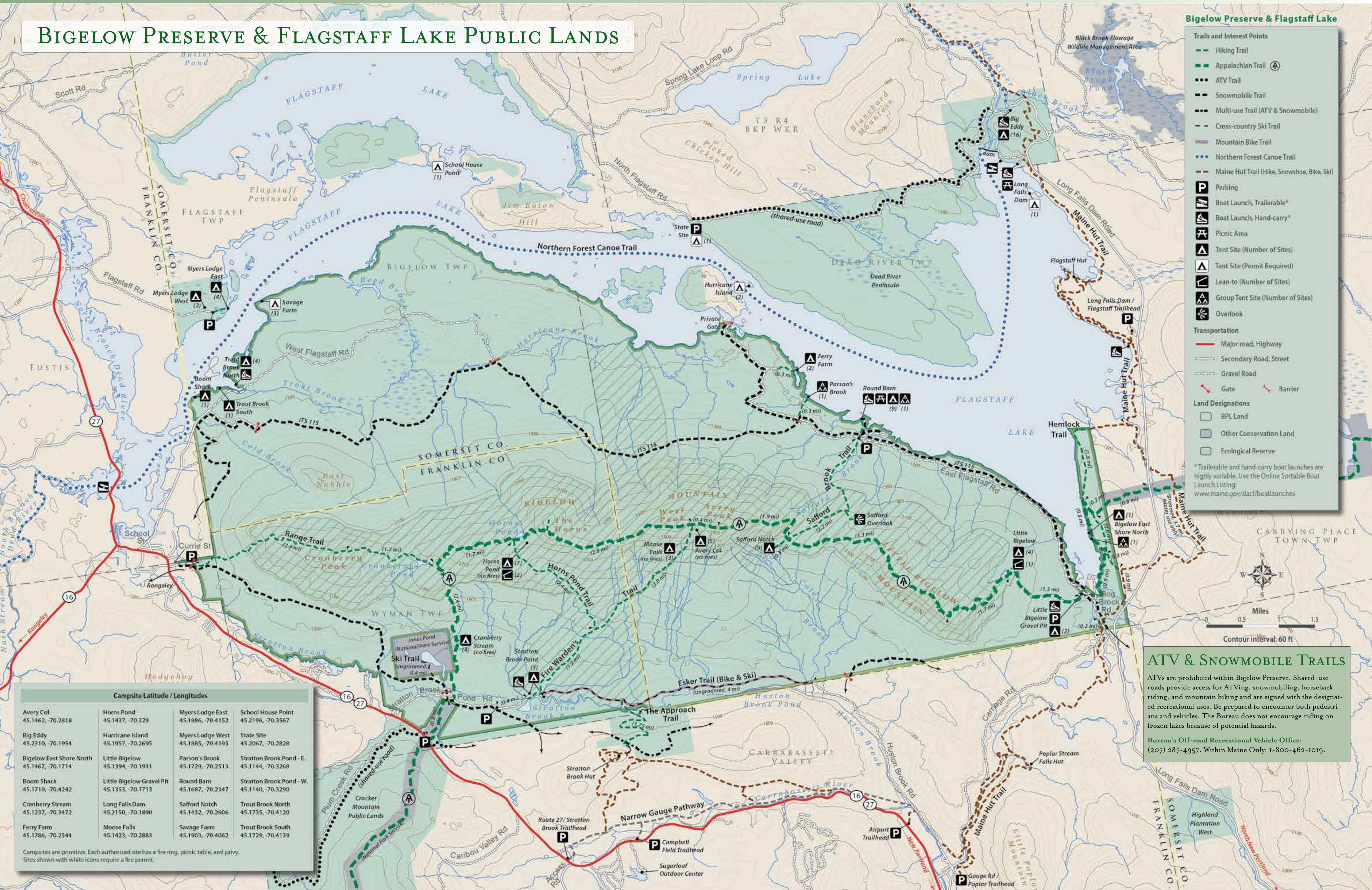


# BIGELOW PRESERVE & FLAGSTAFF LAKE PUBLIC LANDS

## Bigelow Preserve & Flagstaff Lake

- Trails and Interest Points**
- Hiking Trail
  - Appalachian Trail (A)
  - ATV Trail
  - Snowmobile Trail
  - Multi-use Trail (ATV & Snowmobile)
  - Cross-country Ski Trail
  - Mountain Bike Trail
  - Northern Forest Canoe Trail
  - Maine Hut Trail (Hike, Snowshoe, Bike, Ski)
  - Parking
  - Boat Launch, Trailerable\*
  - Boat Launch, Hand-carry\*
  - Picnic Area
  - Tent Site (Number of Sites)
  - Tent Site (Permit Required)
  - Lean-to (Number of Sites)
  - Group Tent Site (Number of Sites)
  - Overlook
- Transportation**
- Major road, Highway
  - Secondary Road, Street
  - Gravel Road
  - Gate
  - Barrier
- Land Designations**
- BPL Land
  - Other Conservation Land
  - Ecological Reserve
- \*Trailerable and hand-carry boat launches are highly variable. Use the Online Sortable Boat Launch Listing: [www.maine.gov/dacf/boatlaunches](http://www.maine.gov/dacf/boatlaunches)



## ATV & SNOWMOBILE TRAILS

ATVs are prohibited within Bigelow Preserve. Shared-use roads provide access for ATVing, snowmobiling, horseback riding, and mountain biking and are signed with the designated recreational uses. Be prepared to encounter both pedestrians and vehicles. The Bureau does not encourage riding on frozen lakes because of potential hazards.

Bureau's Off-road Recreational Vehicle Office:  
(207) 287-4957. Within Maine Only: 1-800-462-1019.

Campsite Latitude / Longitudes			
Avery Col 45.1462, -70.2818	Horns Pond 45.1437, -70.329	Myers Lodge East 45.1886, -70.4152	School House Point 45.2196, -70.3567
Big Eddy 45.2310, -70.1954	Hurricane Island 45.1957, -70.2695	Myers Lodge West 45.1885, -70.4195	State Site 45.2067, -70.2828
Bigelow East Shore North 45.1467, -70.1714	Little Bigelow 45.1394, -70.1931	Parson's Brook 45.1729, -70.2513	Stratton Brook Pond - E. 45.1144, -70.3268
Boom Shack 45.1710, -70.4242	Little Bigelow Gravel Pit 45.1353, -70.1713	Round Barn 45.1687, -70.2347	Stratton Brook Pond - W. 45.1140, -70.3290
Cranberry Stream 45.1237, -70.3472	Long Falls Dam 45.2150, -70.1890	Safford Notch 45.1432, -70.2606	Trout Brook North 45.1735, -70.4120
Ferry Farm 45.1786, -70.2544	Moose Falls 45.1423, -70.2883	Savage Farm 45.1903, -70.4062	Trout Brook South 45.1729, -70.4139

Campsites are primitive. Each authorized site has a fire ring, picnic table, and privy. Sites shown with white icons require a fire permit.

## HIKING TRAILS

Hikers can choose from many one-day or multi-day hikes on 30 miles of the white-blazed Appalachian Trail and the blue-blazed side trails. A popular, though strenuous, day-hiking loop runs via the Fire Warden's Trail, Appalachian Trail, and Horns Pond Trail for a total of 12.3 miles. This loop includes several scenic vistas and, Old Man's Head, a point of interest just below Avery Peak on a southward spur off the AT.

**Appalachian Trail (AT)** (strenuous/difficult, 17.6 miles) traverses the seven peaks of the Bigelow Mountain range along 17.6 miles of this National Scenic Trail. This classic ridge walk includes significant elevation gain and loss. Eastern section is commonly referred to as the Little Bigelow Trail, a moderate to difficult route passing a lean-to, a series of pools, plus wonderful views of the Bigelow Range. In addition there are 14.8 miles of blue-blazed side trails managed as part of the AT system. Access: East Flagstaff Road and Safford Brook Trailheads.

**Esker Trail** (easy, 4.0 miles) is a flat ungraded singletrack forested trail that follows the old 1960's haul road. Built for mountain bikes and maintained by NEMBA. Access: Fire Warden's trailhead.

**Fire Warden's Trail** (moderate to difficult, 4.6 miles) provides the shortest route to Avery Peak or West Peak from the south side of the Bigelow Range. Follow Stratton Brook Pond Road 0.4 mile east to Stratton Brook and another 0.4 mile east to the fork. Take the north fork (left) 0.3 miles to the old trail-

head clearing. The trail bears northeast along an old tote road and ascends gradually to the intersection with the Horn's Pond Trail. Moose Falls Campsite is located about 1 mile further up the Fire Warden's Trail. Shortly after this the trail ascends steeply for the last 0.7 mile until the Fire Warden's Trail ends at the AT. Access: Stratton Brook Pond Road off Route 16/17.

**Range Trail** (moderate to difficult, 4.6 miles) begins at the western end of the Bigelow Range on a woodland trail, a gradual climb begins at .3 miles along a wide logging road and

rises to barren ledges at about 2 miles, passing the waterless Arnold's Well, then up the ledges to several views before toping out at Cranberry Peak. The eastward descent is equally short and steep before moderate terrain leads to the north shore of Cranberry Pond before meeting the AT. Access: Currie Street off Route 16/27.

**Safford Brook Trail** (moderate to difficult, 2.2 miles) climbs gradually through forested lands crossing Safford Brook about 0.7 miles above East Flagstaff Road. The trail progressively

steepens until it reaches the junction with the Appalachian Trail near Safford Notch, an area renowned for its "house-sized" boulders. Access: East Flagstaff Road off Long Falls Dam Road from Route 16.

**The Approach Trail** (easy, 1.75 miles) follows an old road for an easy 0.25 miles before starting the ascent to the hut and connecting with Maine Huts & Trails routes. Access: Stratton Brook Pond Road off Route 16/27.