

From: [Timothy E. Steigelman](#)
To: [DiBello, Carol](#)
Cc: [Joanna B. Tourangeau](#)
Subject: [EXTERNAL SENDER] Supplement to Nordic Aquafarms Application
Date: Tuesday, November 20, 2018 10:48:03 AM
Attachments: [18-11-20 Nordic Aquafarms \(TES\) Supp. Ltr. to BPL.PDF](#)
[Supp. Ex. A 0231714.00-Option 2.PDF](#)
[Supp. Ex. B - Detail 3.PDF](#)
[Supp. Ex. C - Detail 5.PDF](#)

Dear Ms. DiBello:

Attached please find a supplement to Nordic Aquafarms' pending submerged land lease application, including a cover letter and supplemental exhibits A – C.

Please confirm that this supplemental information will be treated as an amendment to Nordic Aquafarms' pending application with BPL, as previously discussed by email earlier this month.

Please contact Attorney Tourangeau or me with any questions you may have.

Sincerely,

Timothy E. Steigelman
Attorney

207.253.0553 Direct
TSteigelman@dwmlaw.com

84 Marginal Way, Suite 600, Portland, ME 04101-2480
800.727.1941 | 207.772.3627 Fax | dwmlaw.com

DrummondWoodsum
ATTORNEYS AT LAW

The information transmitted herein is intended only for the person or entity to which it is addressed and may contain confidential and/or privileged material. Unintended transmission shall not constitute waiver of any privilege, including, without limitation, the attorney-client privilege if applicable. Any review, retransmission, dissemination or other use of, or taking of any action in reliance upon, this information by persons or entities other than the intended recipient is prohibited. If you received this in error, please contact the sender and delete the e-mail and any attachments from any computer.

Via Email Only

November 20, 2018

Ms. Carol DiBello
Department of Agriculture, Conservation & Forestry
Bureau of Parks and Lands
22 State House Station
Augusta, ME 04333

Email: Carol.DiBello@maine.gov

RE: Supplement to Nordic Aquafarms Submerged Lands Lease Application

Dear Ms. DiBello:

Attached with the submittal email please find **Supplemental Exhibit A** (revised overhead view showing Eckrote littoral zone, together with side profile); **Supp. Ex. B** (revised cross-section showing buried pipes in the trench); and **Supp. Ex. C** (revised cross-section showing pipes on seabed, covered in stone).

You will please note all supplemental exhibits are clearly marked as draft designs. Supp. Ex. A shows the path currently intended to be approximately **6,050 linear feet** from low water to termination. As engineering continues on this project, the final width of the pipe run is yet to be determined, but we anticipate a **40 foot maximum width** anywhere along the length of pipe. We now submit this supplement to ask for a submerged land lease for that maximum width, understanding Nordic Aquafarms may be required to pay the first year's lease for the entire length and width up front, with the ability to revise the lease in subsequent years to encompass only actual dimensions as built (if narrower than 40 feet once complete).

Please let me know how this supplement affects the Department's review period, and please contact Attorney Tourangeau or me with any questions you may have.

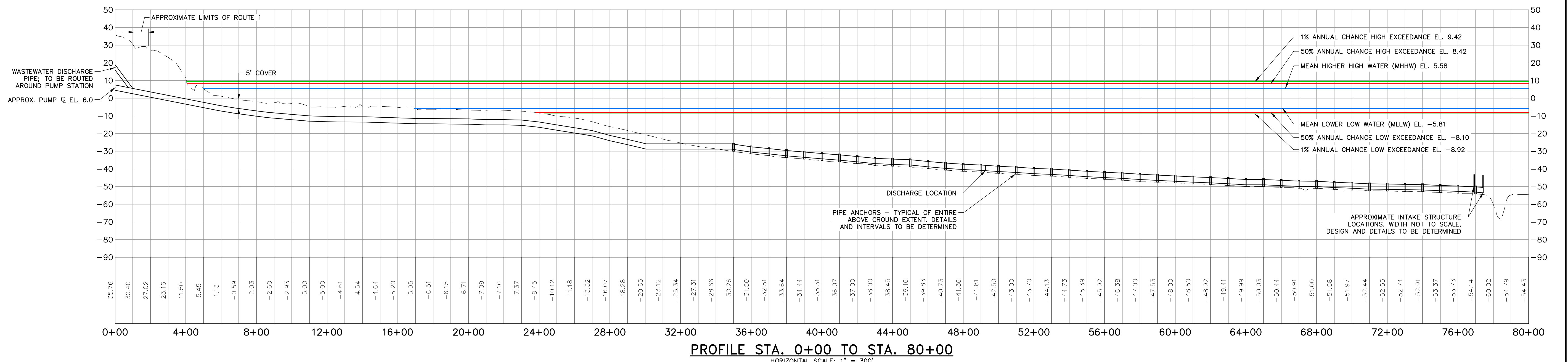
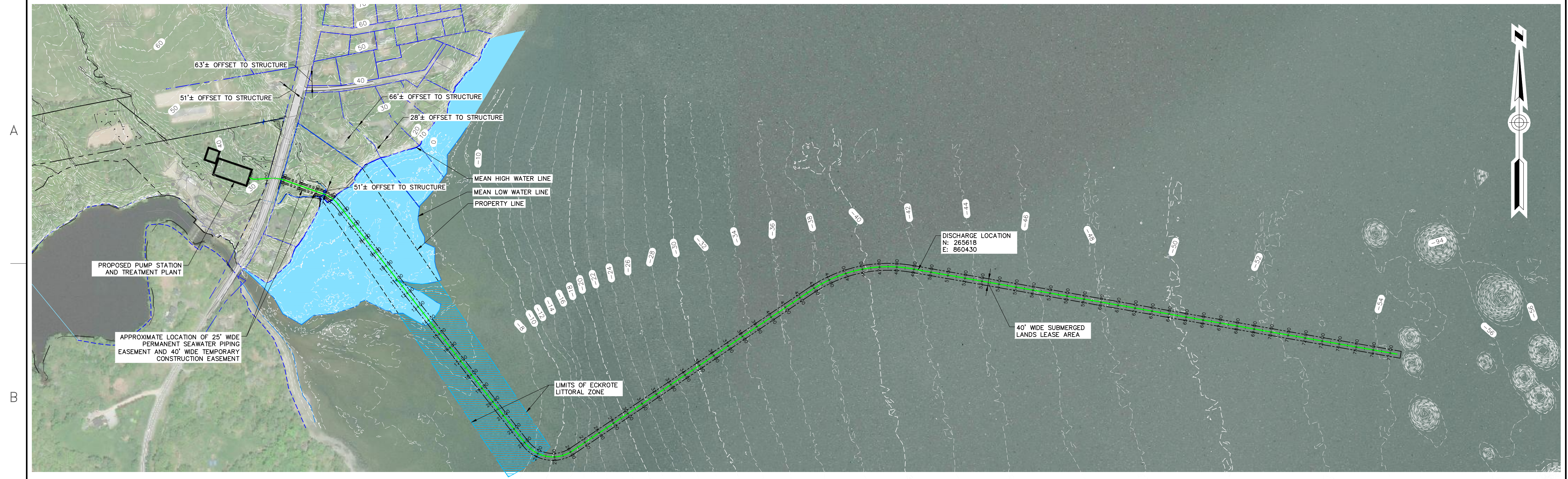
Sincerely,

/signed/

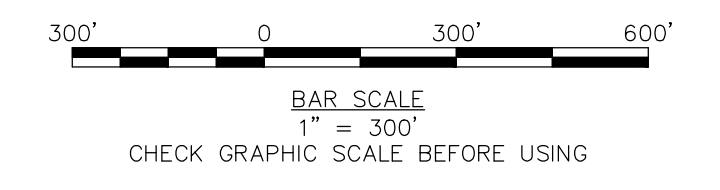
Timothy E. Steigelman

Encls.

CC: Nordic Aquafarms
Joanna B. Tourangeau



- PLAN REFERENCES:**
- BOUNDARY & TOPOGRAPHIC SURVEY DATED 4-2-2018 BY GOOD DEEDS INC., 109 MAIN STREET, BELFAST, ME 04915, (207) 338-5743
 - 2 FOOT LIDAR CONTOURS OBTAINED FROM THE MAINE OFFICE OF GIS. <https://www.maine.gov/megis/>
 - BATHYMETRY DATA PROVIDED BY NORMANDEAU ASSOCIATES, ENVIRONMENTAL CONSULTANTS IN OCTOBER 2018.
 - LITTORAL ZONE & INTERTIDAL ZONE SURVEY IS BASED ON A PLAN BY GARTLEY & DORSKY ENGINEERING SURVEYING, 59 UNION STREET, UNIT 1, P.O. BOX 1031 CAMDEN, ME 04843-1031, DATED NOVEMBER 14, 2018.
 - VERTICAL DATUM IS REFERENCED TO NAVD88 (FEET).
 - PROPOSED PIPE ROUTES (KMZ FILES) RECEIVED FROM CIAMBRO CORPORATION.
- NOTES:**
- PROPOSED FEATURES ARE APPROXIMATE IN LOCATION AND SCALE.
 - PIPE ALIGNMENT IS SETBACK GREATER THAN 25 FEET FROM LITTORAL SIDELINES.



41 Hutchins Drive
 Portland, Maine 04102
 800.426.4262 | www.woodardcurran.com

WOODARD & CURRAN

COMMITMENT & INTEGRITY DRIVE RESULTS
 THIS DOCUMENT IS THE PROPERTY OF WOODARD & CURRAN, INC. AND ITS CLIENT. REPRODUCTION OR MODIFICATION WITHOUT WRITTEN PERMISSION IS PROHIBITED.

REV.	DESCRIPTION	DATE

CHECKED BY: PJP
 02/21/14 00-C-200.dwg

DESIGNED BY: KJT
 DRAWN BY: JBC

INTAKE/DISCHARGE PIPELINE
 OPTION 2

CIAMBRO

NAF BELFAST

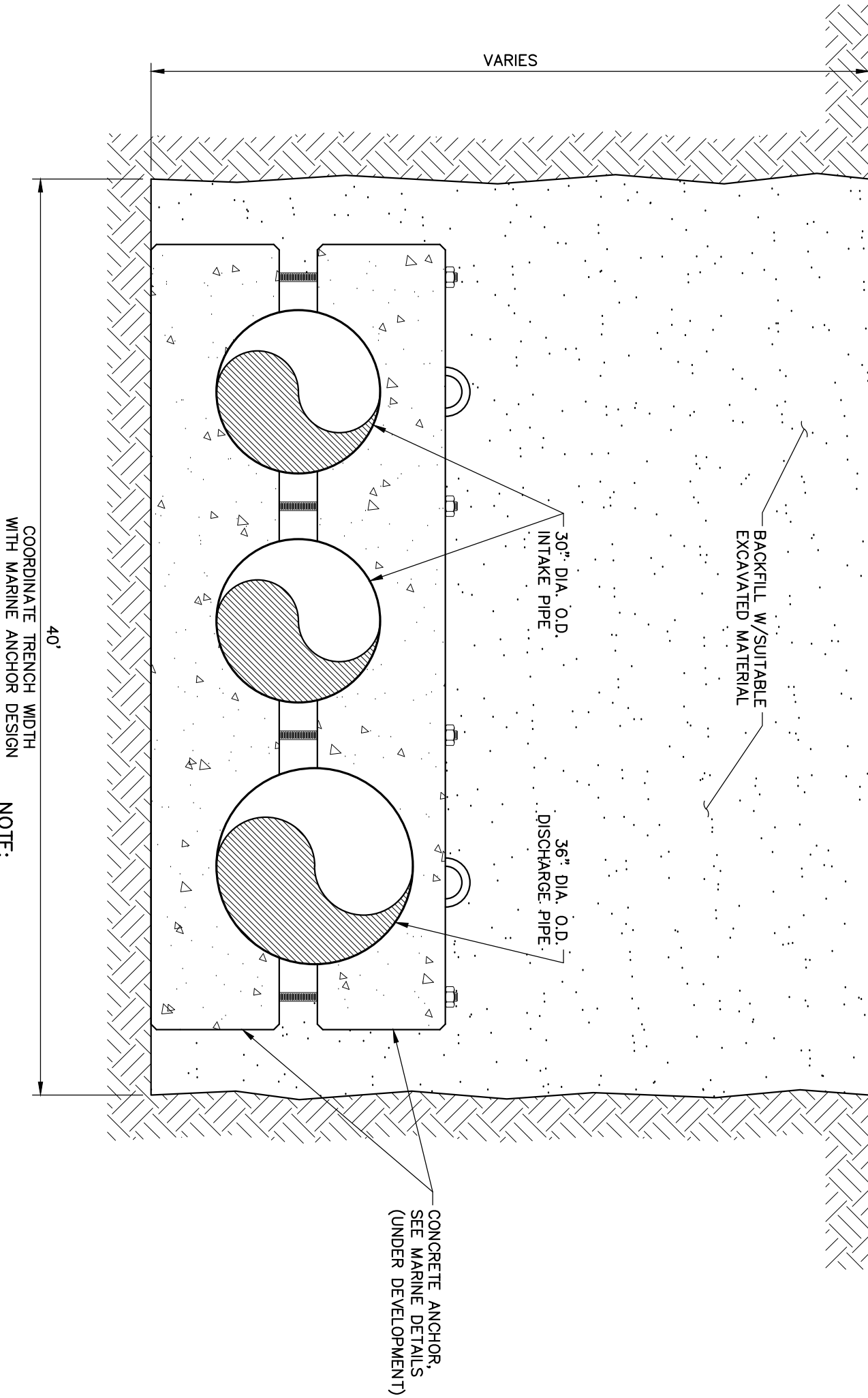
JOB NO.: 0231714.00
 DATE: NOVEMBER 2018
 SCALE: 1" = 300'
 SHEET: 2 OF 3

OPTION 2

DRAFT - NOT FOR CONSTRUCTION


DRAFT

Width conservatively shown as 40 feet for the length of the pipeline; however, further engineering is expected to reduce that width along significant portions of the pipeline.



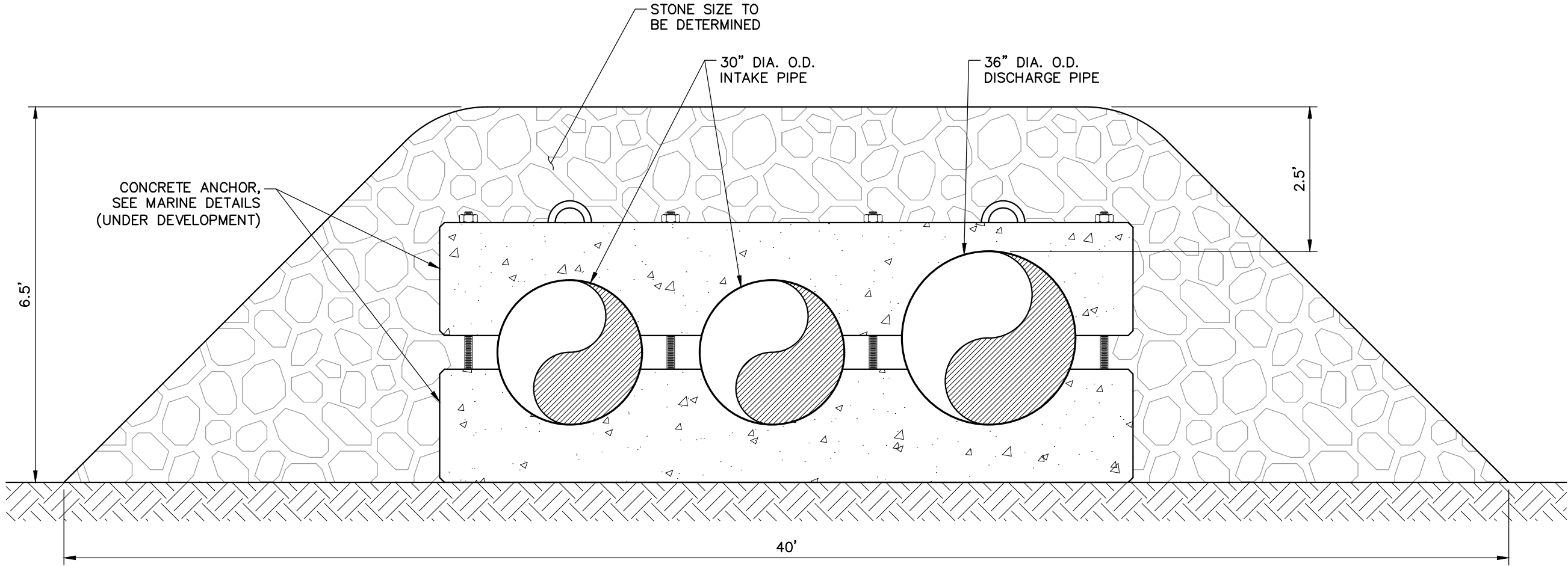
NOTE:

- CONCRETE ANCHOR DIMENSIONS ARE UNDER DEVELOPMENT; MINIMUM CLEAR DIMENSIONS FOR ANCHOR TOPS AND BOTTOMS WERE ASSUMED TO BE 6" AND 12" RESPECTIVELY.

JOB NO: 0231714.00 DATE: OCTOBER 2018 SCALE: NOT TO SCALE	CIANBRO	CONCEPTUAL TRENCH DETAIL		 41 Hutchins Drive Portland, Maine 04102 800.426.4262 www.woodardcurran.com COMMITMENT & INTEGRITY DRIVE RESULTS
	NAF BELFAST			
Detail 3	DESIGNED BY: KJT	CHECKED BY: PJP		
	DRAWN BY: JBC	0231714.00-C-300.dwg		

DRAFT

Width conservatively shown as 40 feet for the length of the pipeline; however, further engineering is expected to reduce that width along significant portions of the pipeline.



- NOTE:**
- CONCRETE ANCHOR DIMENSIONS ARE UNDER DEVELOPMENT; MINIMUM CLEAR DIMENSIONS FOR ANCHOR TOPS AND BOTTOMS WERE ASSUMED TO BE 6" AND 12" RESPECTIVELY.

41 Hutchins Drive
 Portland, Maine 04102
 800.426.4262 | www.woodardcurran.com



COMMITMENT & INTEGRITY DRIVE RESULTS

CONCEPTUAL ARMORED SEAFLOOR PIPE INSTALLATION

DESIGNED BY: KJT
 CHECKED BY: PJP
 DRAWN BY: JBC
 0231714.00-C-300.dwg

CIANBRO

NAF BELFAST

JOB NO: 0231714.00
 DATE: OCTOBER 2018
 SCALE: NOT TO SCALE

Detail 5