

1/2 k square intersecting a known prehistoric archaeological site.

1/2 k square intersecting a known historic archaeological site.

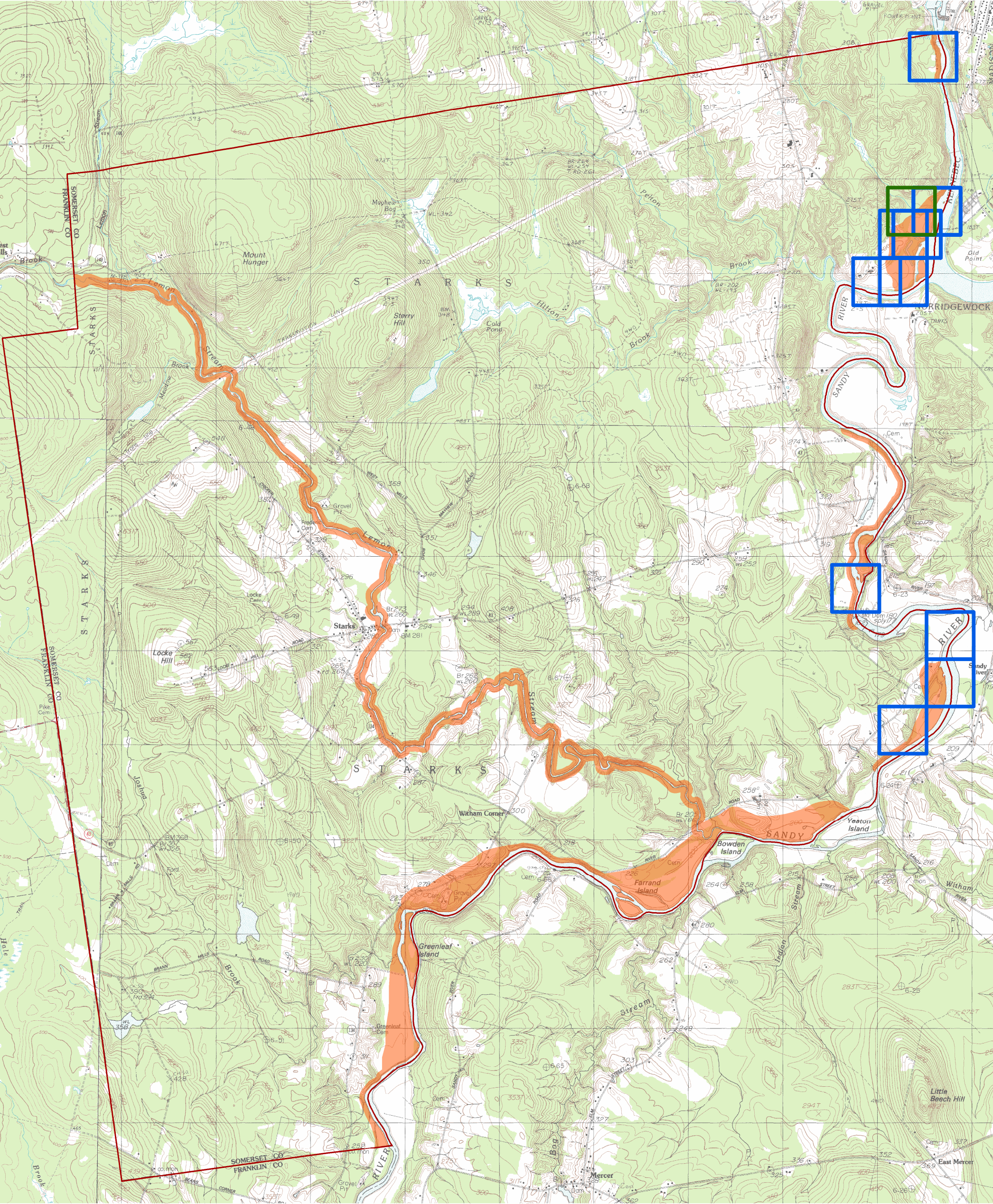
1/2 k square intersecting a known historic archaeological site with an estimated location. } none in Starks to date

Areas sensitive for prehistoric archaeology

Known Archaeological Sites* and Areas Sensitive for Prehistoric Archaeology* in Starks

information provided by
Maine Historic Preservation Commission
June 2008

*dated material subject to future revision
map 1/1



0 0.5 1 2 3 4 5 Kilometers