

Gero Island

Chesuncook Twp

Vital Statistics

Size: 3,175 acres

Regulated: 3,042 acres

Non-Regulated: 133 acres

Upland: 3,089 acres

Forested Wetland (NWI): 65 acres

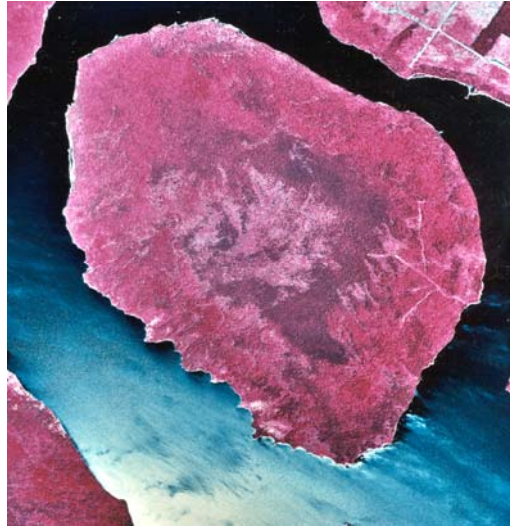
Non-Forested Wetland: 25 acres

Open Water: 2 acres

Roads: trails-2 miles

Biophysical Region: St. John Uplands

BPL Region: North



Rare Species and Exemplary Natural Community Table for Gero Island

Common Name	Latin Name	S-RANK	G-RANK	State Status
<i>Exemplary Natural Communities</i>				
Lower Elevation Spruce-Fir Forest		S4	GNR	N/A
White Pine Forest		S4	G5	N/A
<i>Rare Plants</i>				
Slender Rush	<i>Juncus subtilis</i>	S1	G4	T
<i>Rare Animals</i>				
None found				

Description

Gero Island is a 3,175 acre island in Chesuncook Lake. Nearly the entire island was classified as regulated timberland, and only 3% is wetland. Most of the island's timber was harvested in the 1920s, and the southeast side of the island was cut again following a spruce-budworm outbreak in the 1980s. In fact, budworm has had a profound impact on the island's forest, creating a multi-aged structure within mixed wood stands. Stands with an abundance of fir were preferentially damaged by budworm; consequently, more uniform stands of black spruce/red spruce and white pine/red spruce emerged with less damage. Two such stands have been identified as exemplary natural communities: one a spruce-fir flat on poorly drained soils in the south-central portion of the island, and the other a mixed white pine/red spruce stand in the northeastern part of the island. This latter stand supports white pine trees with an average diameter of 38 inches.

The lakeshore habitat is influenced by the dramatic dam-influenced drawdown of Chesuncook Lake. Four campsites occur along the shoreline.

Resources

Gero Island Land Management Plan. 1980. Bureau of Public Lands, Maine Department of Conservation, Augusta, Maine. 31 pp.