

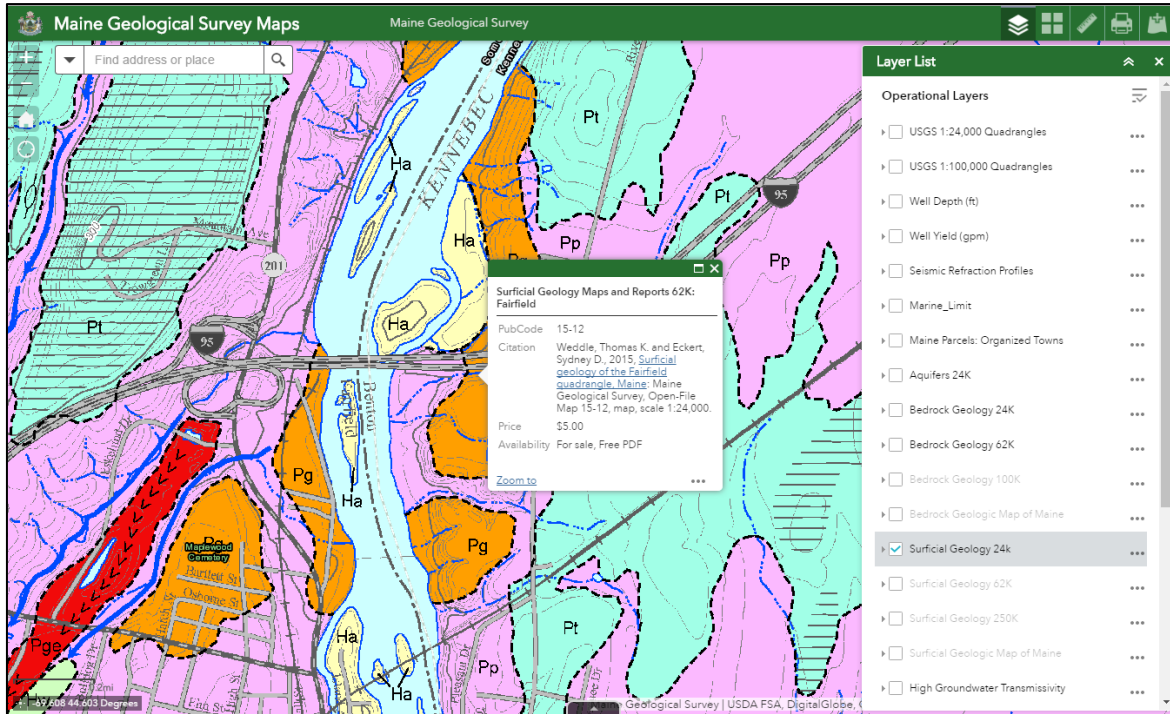


Maine Geological Survey Interactive and Customized Web Maps



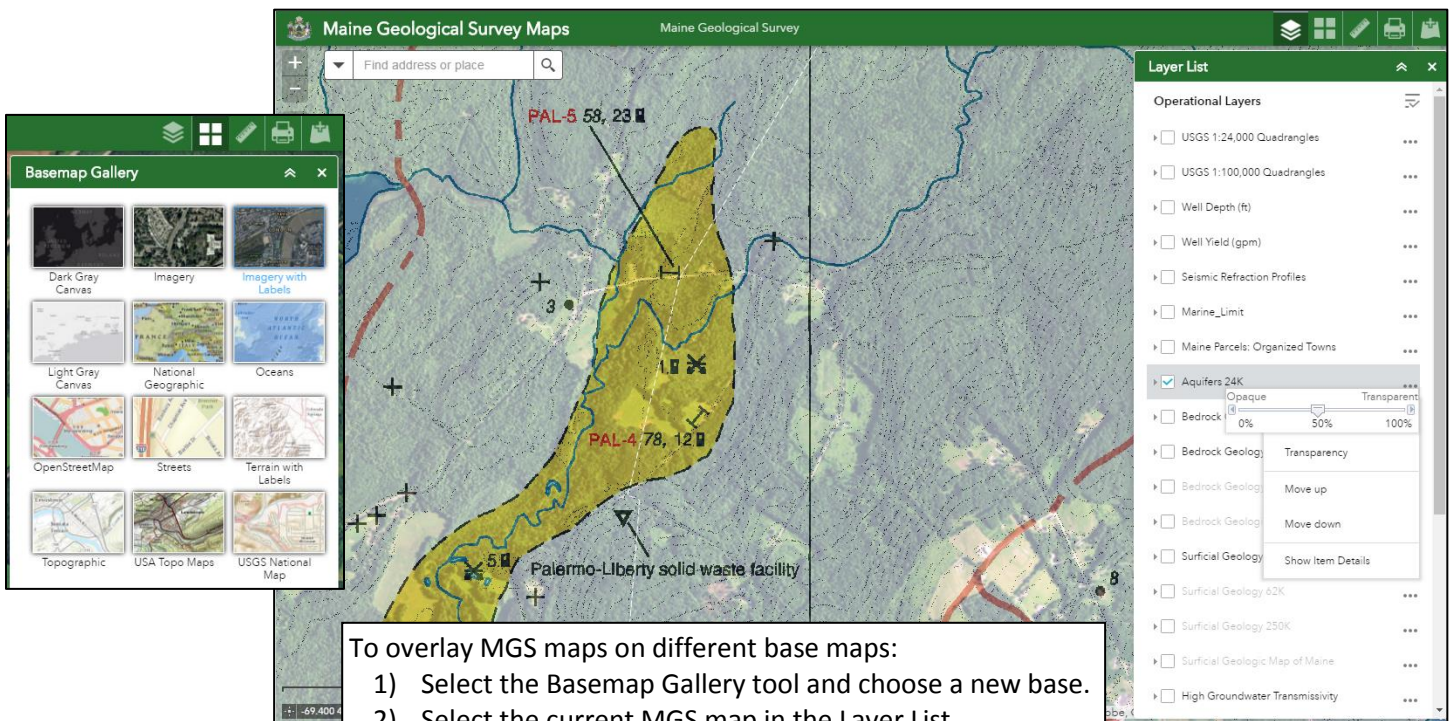
For decades, the geologic maps published by the Maine Geological Survey (MGS) have been available in paper format for purchase for a small fee. About ten years ago, MGS started making maps available on the web site for free in PDF format. Now, the MGS maps come alive in an interactive web map format that allows you to overlay MGS maps on different base maps, aerial photographs and even your own data. You can even use these maps on your mobile phone with GPS to pinpoint your location on geologic features.

<http://www.maine.gov/dacf/mgs/pubs/#webmaps>



Use the Layer List tool to turn on/off the MGS map you would like to see.

Click on the map to get a pop-up box with the full map reference and a link to the free PDF file.

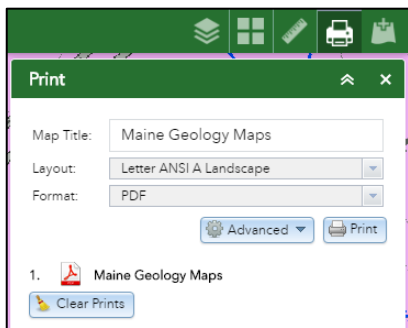


- To overlay MGS maps on different base maps:
- 1) Select the Basemap Gallery tool and choose a new base.
 - 2) Select the current MGS map in the Layer List.
 - 3) Click the ellipsis.
 - 4) Move the Transparency slider to the right.

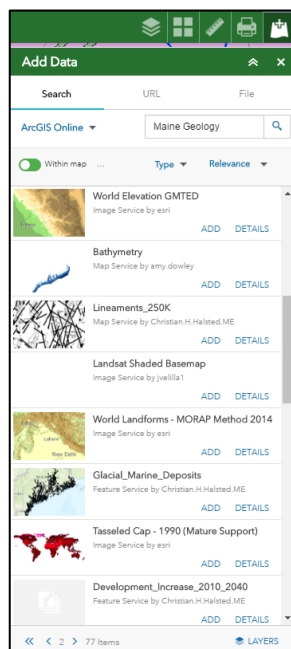
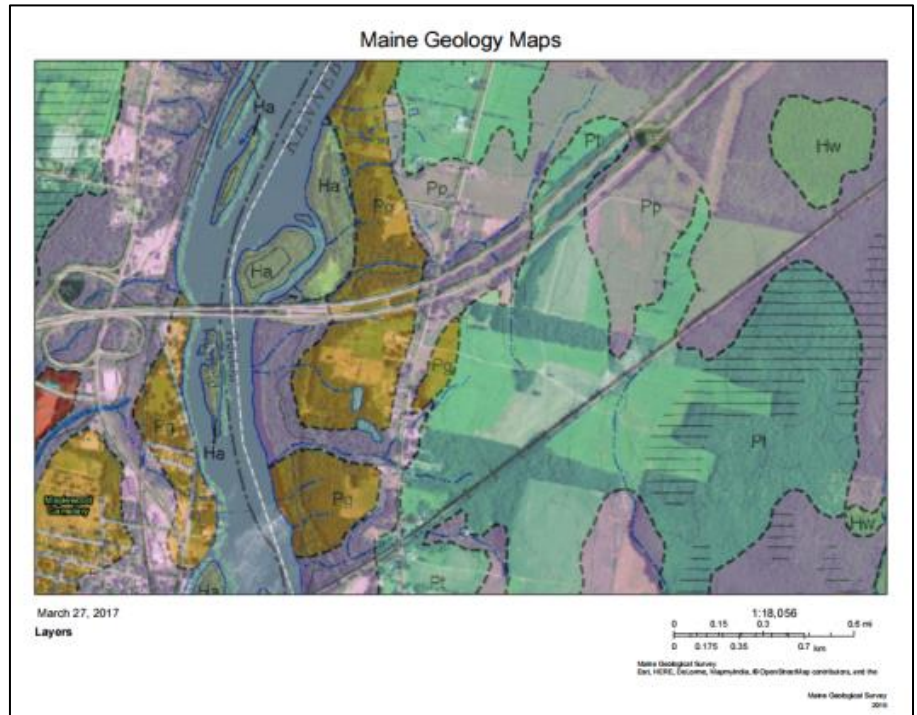
Use the Measurement Tool for getting area and distances of features on the map in many different map units. There is even a location tool that will allow you to click on the map and get the latitude and longitude coordinates of the clicked location.



The Print Tool allows you to print the current map window in various page layouts and sizes to a custom PDF, or a number of other graphic file formats.

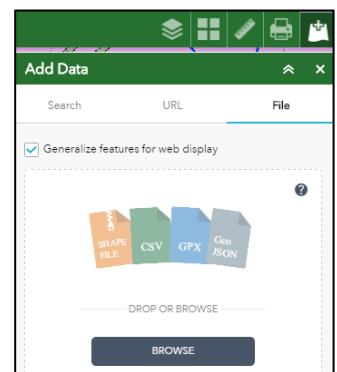
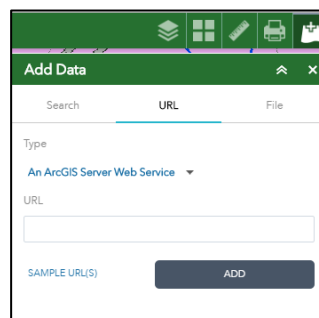


The file can be saved and sent to someone or sent directly to your color printer. Use the Advanced settings to control the map layout, extent and resolution for the print.



The Add Data Tool lets you **Search** for additional data that might be helpful on the map from other web resources like ArcGIS Online.

If you know the **URL** for an ArcGIS Server with Web Services, a WMS Service, or the location of a KML, GeorSS or CSV file on another server you can add that to the map also.



A **File** with your own spatial data from your computer can be displayed if it is in one of the accepted formats such as a shapefile, a comma separated text file with latitude and longitude coordinates, or a GPS file you've downloaded.