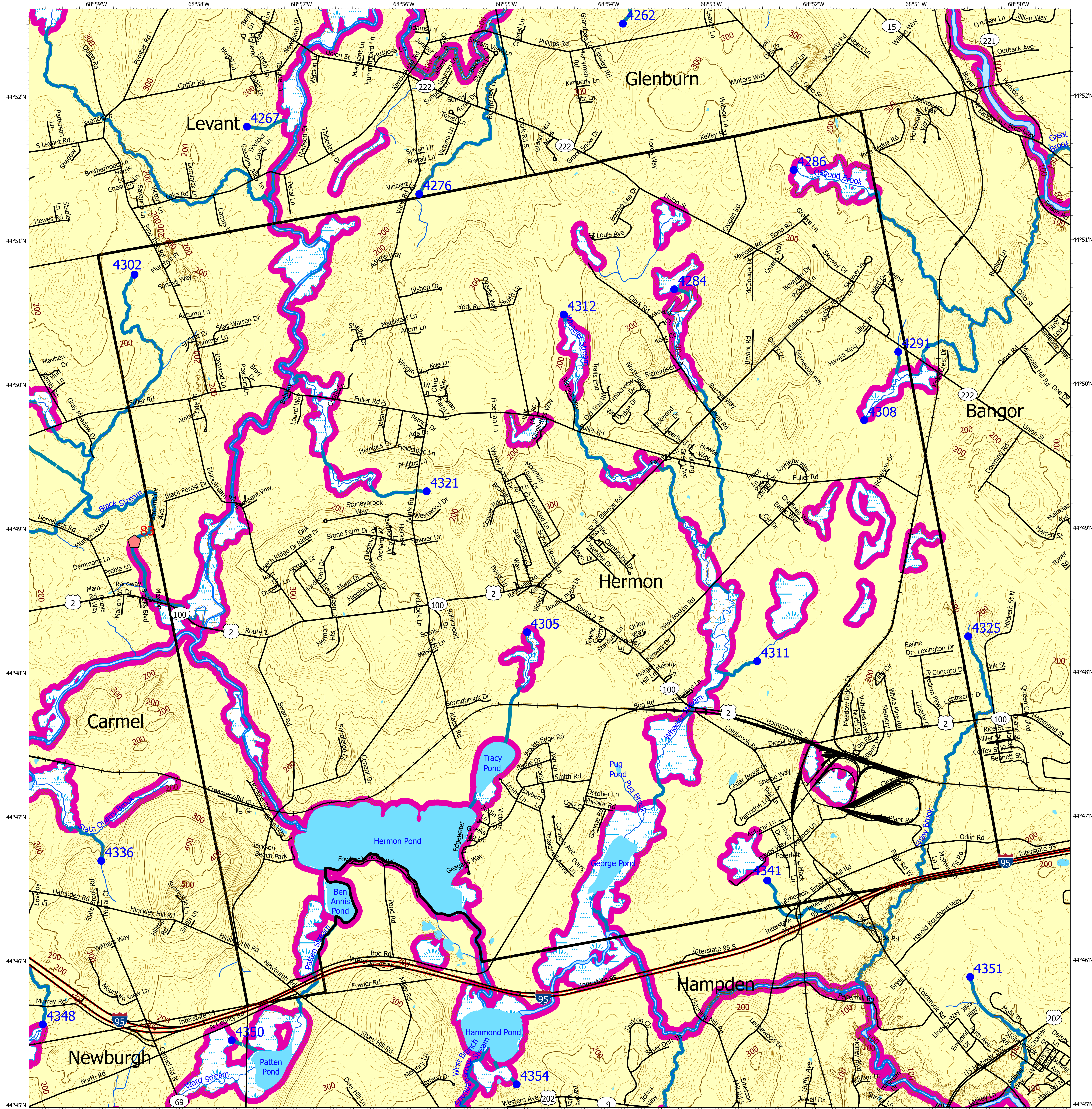


# Statewide Standards for Timber Harvesting in the Shoreland Area\* Map



This map is **ADVISORY**, for planning purposes only. Actual ground conditions and water body locations determine where and how MFS timber harvesting rules apply. Contact the MFS for additional information/assistance from a MFS Forester.

**Wetlands**

- Non-forested Wetlands Greater Than 10 acres (Lacustrine, Palustrine)
- Emergent or Marine Wetland

**Maine Forest Service**

For additional information, please contact the MFS at:  
1-207-287-2791 or 1-800-367-0223 (in-State)  
Email us at: [forestsinfo@maine.gov](mailto:forestsinfo@maine.gov)  
or on the web at: [www.maine-forests-service.gov](http://www.maine-forests-service.gov)

\*See MFS Rule - Chapter 21 for additional information.

**Legend**

- SWS Town
- Outside Maine
- LUPC - Unorganized or Deorganized Town
- FON Town  
Statewide Standard Rules do not apply (Town/DEP Standards apply)

## Forest Operation Notification & Shoreland Area\* Map

### Hermon

**Drainage Points**

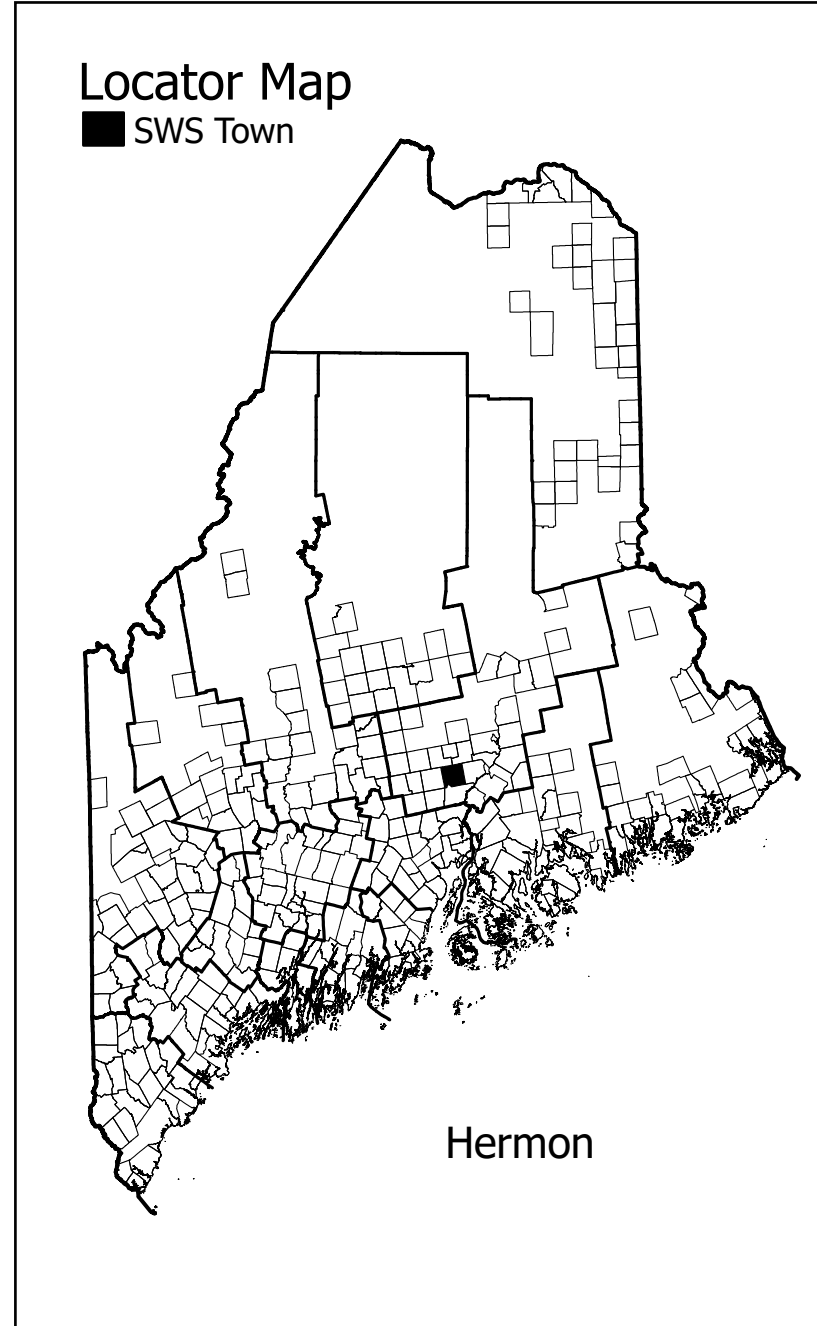
- 1234 300 Acre Drainage Point (start of the 75ft buffer)  
1234 - ID Number (location info)
- 56 25 Square Mile Drainage Point (start of the 250 ft buffer)  
56 - ID Number (location info)

July 2025

Adoption Date  
8/19/2009

### Buffers

- 250 Foot Buffer Zones
  - Great Ponds
  - Non-forested Wetlands greater than 10 acres
  - Rivers below the 25 square mile drainage point
  - Coastal wetlands
  - Tidal Waters
- 75 Foot Buffer Zones
  - Streams between the 300 acre drainage point and the 25 square mile drainage point
- Shoreline Integrity - Streams draining less than 300 acres, ponds and non-forested wetlands greater than 0.1 acres and less than 10 acres



1 0.5 0 1 2 Miles