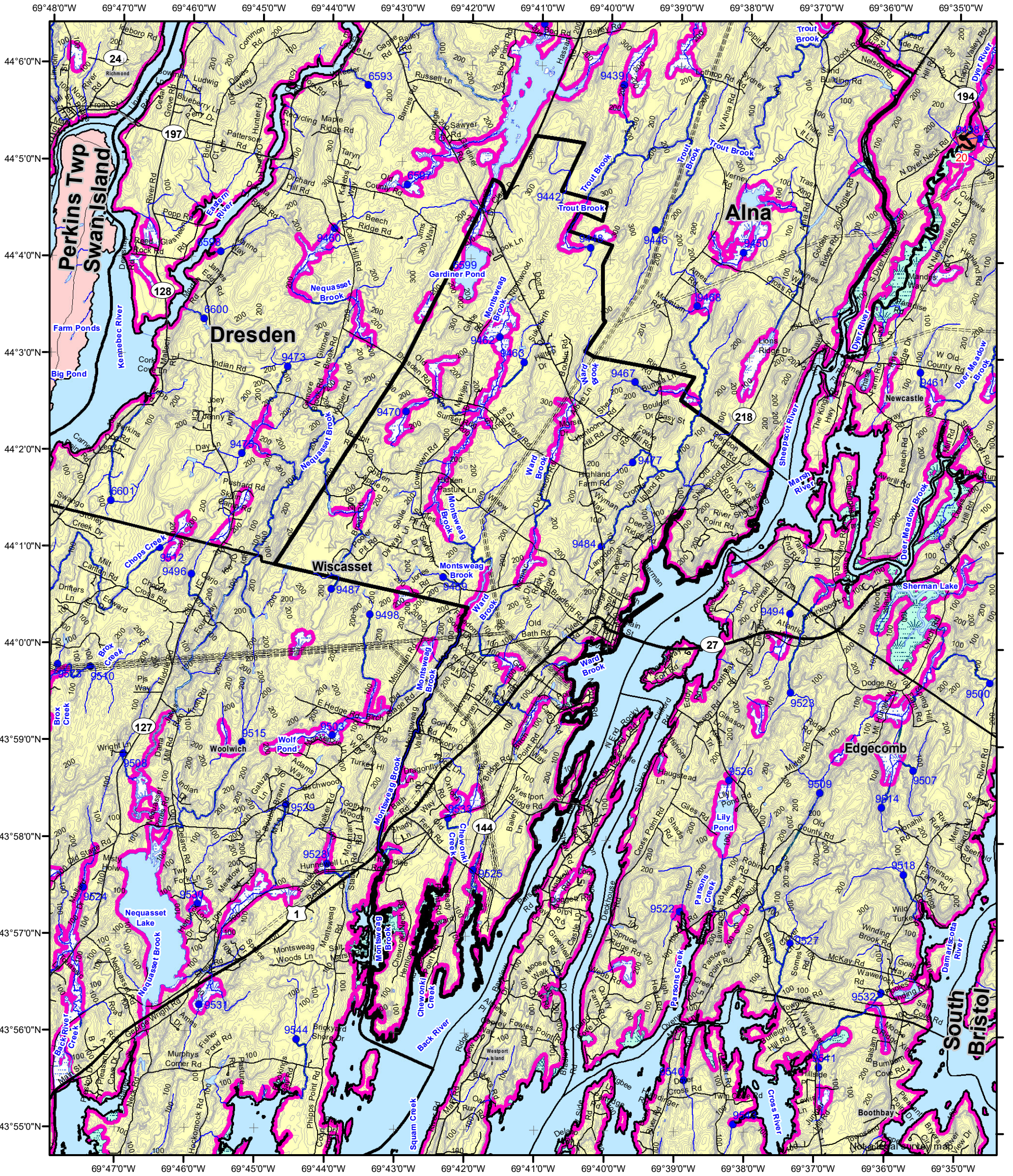


Statewide Standards for Timber Harvesting in the Shoreland Area\* Map



This map is **ADVISORY**, for planning purposes only. Actual ground conditions and water body locations determine where and how MFS timber harvesting rules apply. Contact the MFS for additional information/assistance from a MFS Forester.

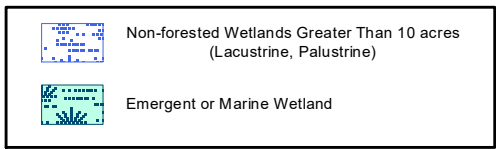
Forest Operation Notification & Shoreland Area\* Map

Wiscasset

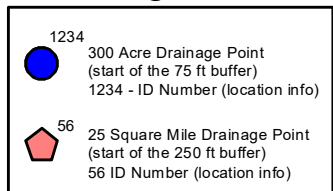
Adoption Date  
3/24/2021

LO Last Name \_\_\_\_\_  
LO First Name \_\_\_\_\_  
Prepared By \_\_\_\_\_  
FONS # \_\_\_\_\_  
Date \_\_\_\_\_

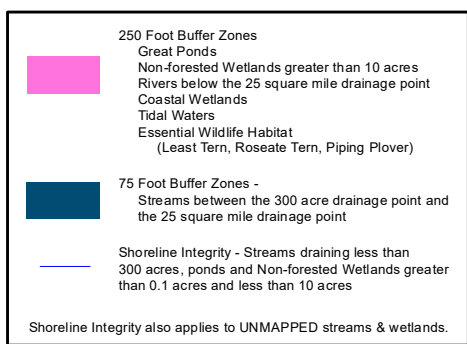
Wetlands



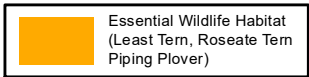
Drainage Points



Buffers



Habitat



Maine Forest Service

For additional information, please contact the MFS at: 1-207-287-2791 or 1-800-367-0223 (in-State)

Email us at: forestinfo@maine.gov

or on the web at: www.maineforestservice.gov

\*See MFS Rule - Chapter 21 for additional information.

