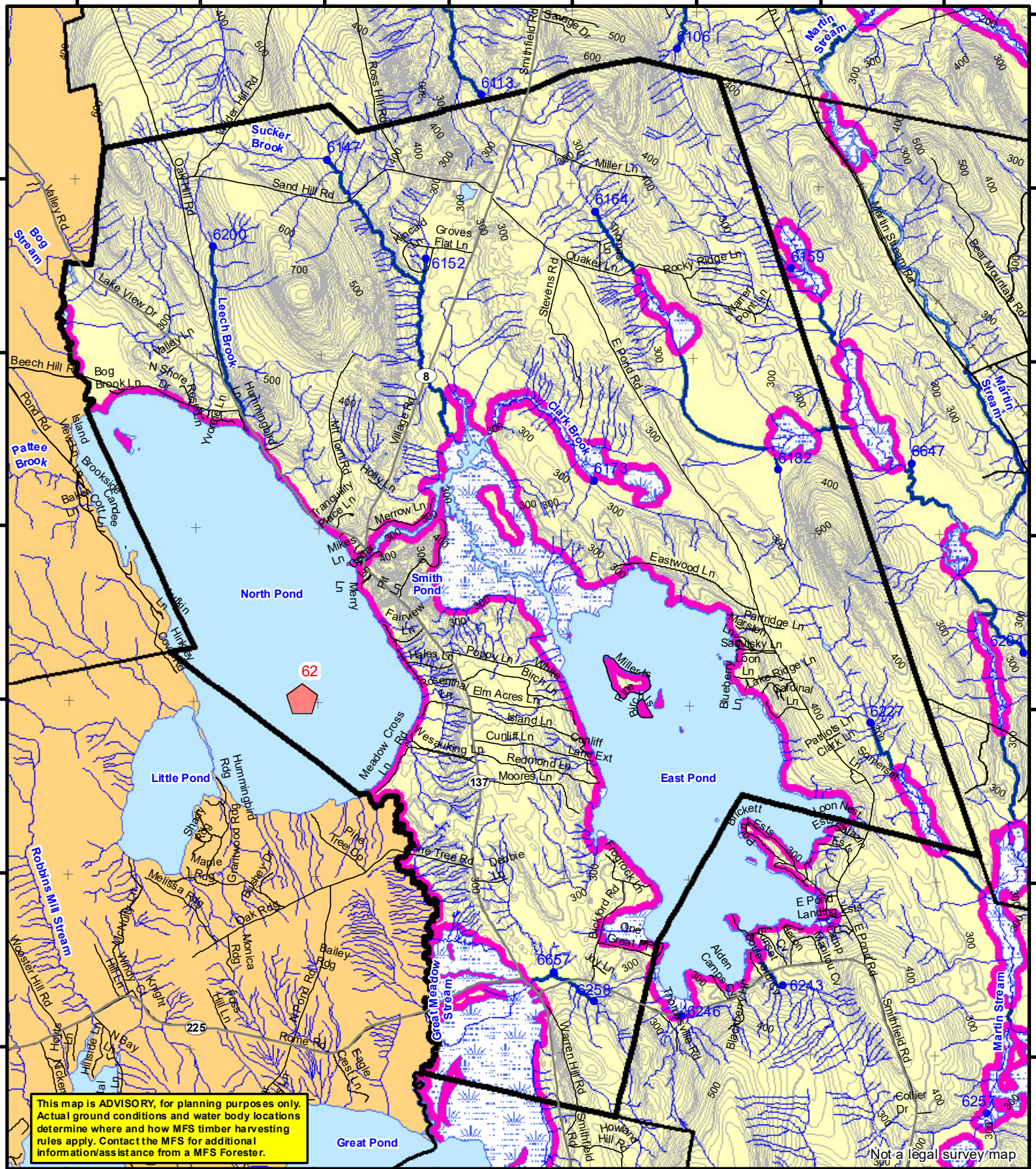


69°52'0"W 69°51'0"W 69°50'0"W 69°49'0"W 69°48'0"W 69°47'0"W 69°46'0"W 69°45'0"W

44°40'0"N  
44°39'0"N  
44°38'0"N  
44°37'0"N  
44°36'0"N  
44°35'0"N



**This map is ADVISORY, for planning purposes only. Actual ground conditions and water body locations determine where and how MFS timber harvesting rules apply. Contact the MFS for additional information/assistance from a MFS Forester.**

Not a legal survey map

**Statewide Standards**

**Buffers**

- 250 Foot Buffer Zones
- Great Ponds
- Non-forested Wetlands greater than 10 acres
- Rivers below the 25 square mile drainage point
- Coastal Wetlands
- Tidal Waters
- Essential Wildlife Habitat (Least Tern, Roseate Tern, Piping Plover)

**75 Foot Buffer Zones**

- Streams between the 300 acre drainage point and the 25 square mile drainage point

**Shoreline Integrity** - Streams draining less than 300 acres, ponds and Non-forested Wetlands greater than 0.1 acres and less than 10 acres

Shoreline Integrity also applies to UNMAPPED streams and wetlands.

**Habitat**

- Essential Wildlife Habitat (Least Tern, Roseate Tern, Piping Plover)

**Forest Operation Notification & Shoreland Area\* Map**

**Smithfield**

Adoption Date  
4/14/2008

December 2021

0 2,000 4,000 8,000 Feet

\*See MFS Rule - Chapter 2.1 for additional information.

Department of Agriculture, Conservation and Forestry  
Maine Forest Service  
Forest Policy & Management

**Roads**

- Interstate
- US Highway
- State Highway
- 24k Roads

**Hydrology**

- Pond or Lake
- River
- Estuary

**Streams**

- Stream

**Contours**

- 20 ft
- 100 ft

**Utilities**

- Electric
- Pipeline
- Railroad
- Airfield

**Wetlands**

- Emergent or Marine Wetland
- Non-forested Wetlands Greater Than 10 acres (Lacustrine, Palustrine)

**Drainage Points**

- 300 Acre Drainage Point (start of the 75 ft buffer) 1234 - ID Number (location info)
- 25 Square Mile Drainage Point (start of the 250 ft buffer) 56 ID Number (location info)

LO Last Name \_\_\_\_\_

LO First Name \_\_\_\_\_

Prepared By \_\_\_\_\_

FONS # \_\_\_\_\_

Date \_\_\_\_\_

FON Town \_\_\_\_\_

- Statewide Standards Rules do not apply (Town/MDEP Standards apply)
- Statewide Standards Rules Apply
- LUPC - Unorganized or Deorganized Town
- Outside Maine

Data Source:  
Maine Office of GIS

G.T.Miller E:\aws\SW S page size december 2021.mxd