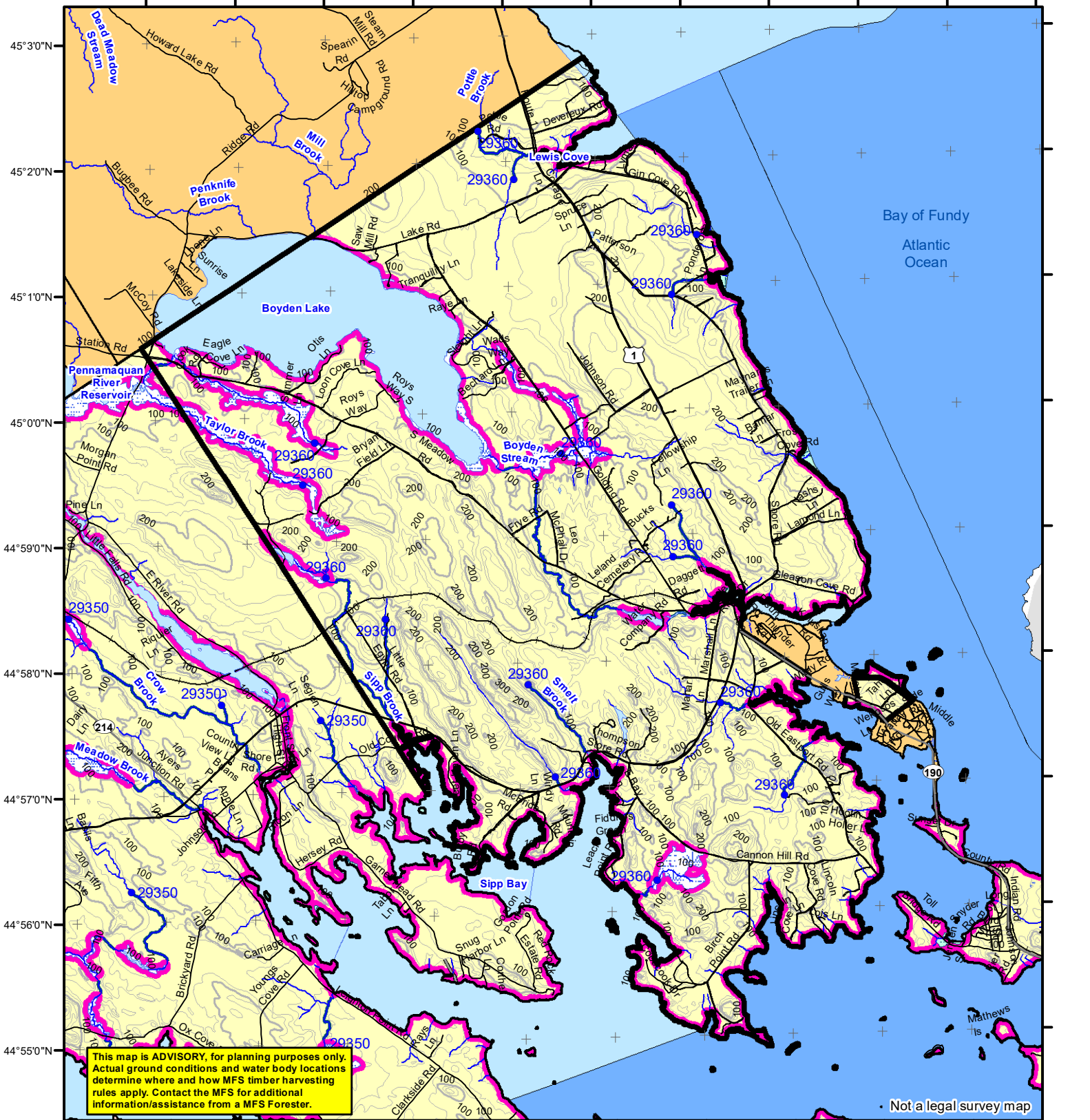


67°11'0"W 67°10'0"W 67°9'0"W 67°8'0"W 67°7'0"W 67°6'0"W 67°5'0"W 67°4'0"W 67°3'0"W 67°2'0"W 67°1'0"W



This map is ADVISORY, for planning purposes only. Actual ground conditions and water body locations determine where and how MFS timber harvesting rules apply. Contact the MFS for additional information/assistance from a MFS Forester.

Not a legal survey map

Statewide Standards

Buffers

- 250 Foot Buffer Zones
- Great Ponds
- Non-forested Wetlands greater than 10 acres
- Rivers below the 25 square mile drainage point
- Coastal Wetlands
- Tidal Waters
- Essential Wildlife Habitat (Least Tern, Roseate Tern, Piping Plover)

75 Foot Buffer Zones

- Streams between the 300 acre drainage point and the 25 square mile drainage point

Shoreline Integrity - Streams draining less than 300 acres, ponds and Non-forested Wetlands greater than 0.1 acres and less than 10 acres

Shoreline Integrity also applies to UNMAPPED streams and wetlands.

Habitat

- Essential Wildlife Habitat (Least Tern, Roseate Tern, Piping Plover)

Forest Operation Notification & Shoreland Area* Map

Perry

Adoption Date
1/10/2011

May 2022

0 2,000 4,000 8,000 Feet

*See MFS Rule - Chapter 21 for additional information.

Department of Agriculture, Conservation and Forestry
Maine Forest Service
Forest Policy & Management

Roads

- Interstate
- US Highway
- State Highway
- 24k Roads

Hydrology

- Pond or Lake
- River
- Estuary

Streams

- 250 Foot Buffer Zone
- 75 Foot Buffer Zone
- Shoreline Integrity

Contours

- 20 ft
- 100 ft

Utilities

- Electric
- Pipeline
- Railroad
- Airfield

Wetlands

- Emergent or Marine Wetland
- Non-forested Wetlands Greater Than 10 acres (Lacustrine, Palustrine)

Drainage Points

- 300 Acre Drainage Point (start of the 75 ft buffer)
- 1234 - ID Number (location info)
- 25 Square Mile Drainage Point (start of the 250 ft buffer)
- 56 ID Number (location info)

LO Last Name _____

LO First Name _____

Prepared By _____

FONS # _____

Date _____

FON Town _____

- Statewide Standards Rules do not apply (Town/MDEP Standards apply)
- Statewide Standards Rules Apply
- LUPC - Unorganized or Deorganized Town
- Outside Maine

Data Source:
Maine Office of GIS

G.T.Miller E:\s\sws page size may 2022.mxd