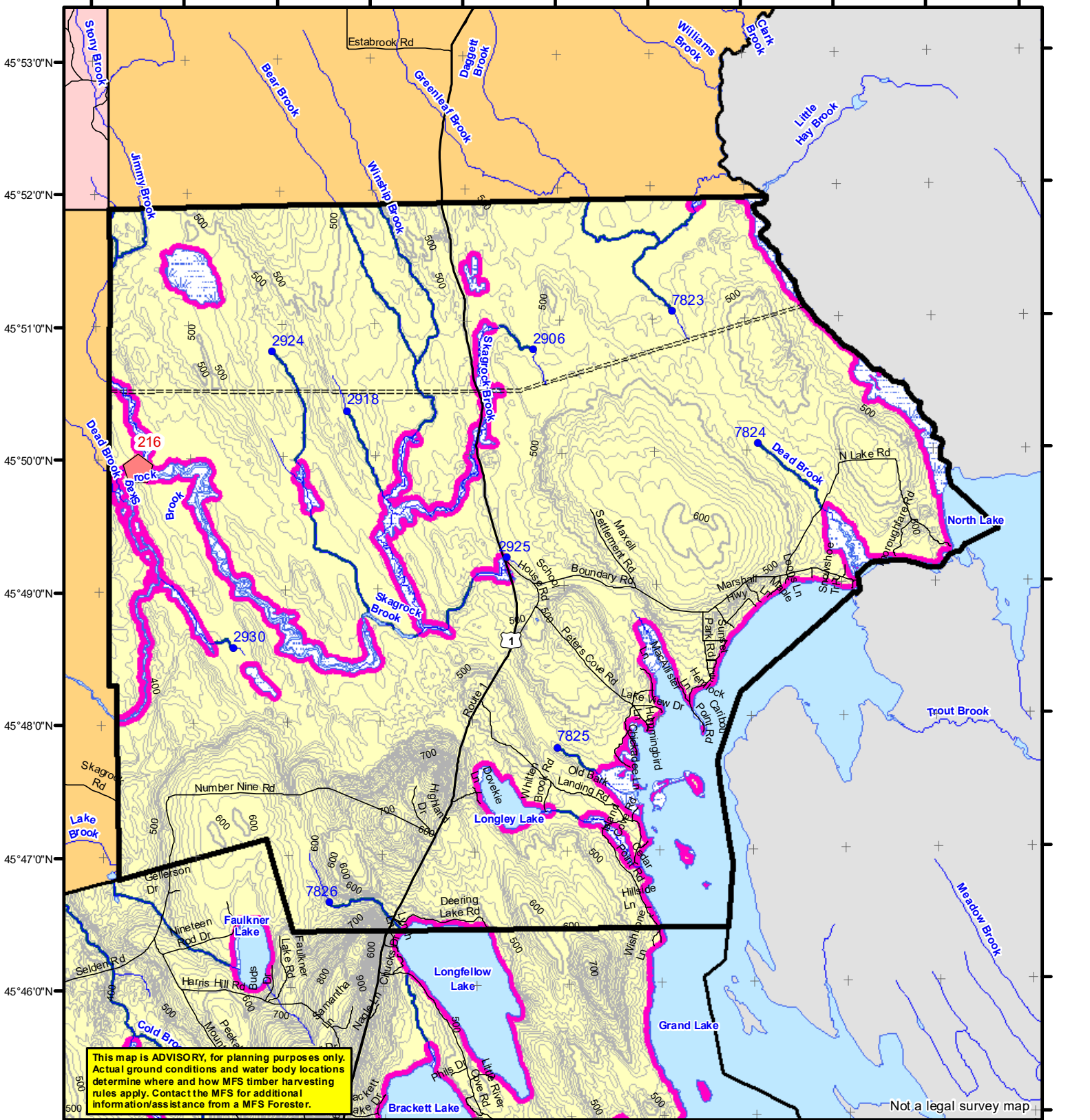


67°55'0"W 67°54'0"W 67°53'0"W 67°52'0"W 67°51'0"W 67°50'0"W 67°49'0"W 67°48'0"W 67°47'0"W 67°46'0"W 67°45'0"W



Not a legal survey map



Statewide Standards

Forest Operation Notification & Shoreland Area* Map

Department of Agriculture, Conservation and Forestry
Maine Forest Service
Forest Policy & Management

LO Last Name _____
 LO First Name _____
 Prepared By _____
 FONS # _____
 Date _____

- Buffers**
- 250 Foot Buffer Zones
 - Great Ponds
 - Non-forested Wetlands greater than 10 acres
 - Rivers below the 25 square mile drainage point
 - Coastal Wetlands
 - Tidal Waters
 - Essential Wildlife Habitat (Least Tern, Roseate Tern, Piping Plover)
- 75 Foot Buffer Zones**
- Streams between the 300 acre drainage point and the 25 square mile drainage point
- Shoreline Integrity** - Streams draining less than 300 acres, ponds and Non-forested Wetlands greater than 0.1 acres and less than 10 acres
- Shoreline Integrity also applies to UNMAPPED streams and wetlands.
- Habitat**
- Essential Wildlife Habitat (Least Tern, Roseate Tern, Piping Plover)

- Drainage Points**
- 1234 300 Acre Drainage Point (start of the 75 ft buffer)
 - 1234 - ID Number (location info)
 - 50 25 Square Mile Drainage Point (start of the 250 ft buffer)
 - 56 ID Number (location info)

- Wetlands**
- Emergent or Marine Wetland
 - Non-forested Wetlands Greater Than 10 acres (Lacustrine, Palustrine)

- Roads**
- Interstate
 - US Highway
 - State Highway
 - 24k Roads
- Hydrology**
- Pond or Lake
 - River
 - Estuary
- Streams**

- Contours**
- 20 ft
 - 100 ft

- Utilities**
- Electric
 - Pipeline
 - Railroad
 - Airfield

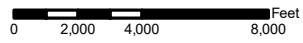
Data Source: Maine Office of GIS

- FON Town**
- Statewide Standards Rules do not apply (Town/MDEP Standards apply)
 - Statewide Standards Rules Apply
 - LUPC - Unorganized or Deorganized Town
 - Outside Maine

Orient

Adoption Date
12/4/2008

December 2021



*See MFS Rule - Chapter 2.1 for additional information.