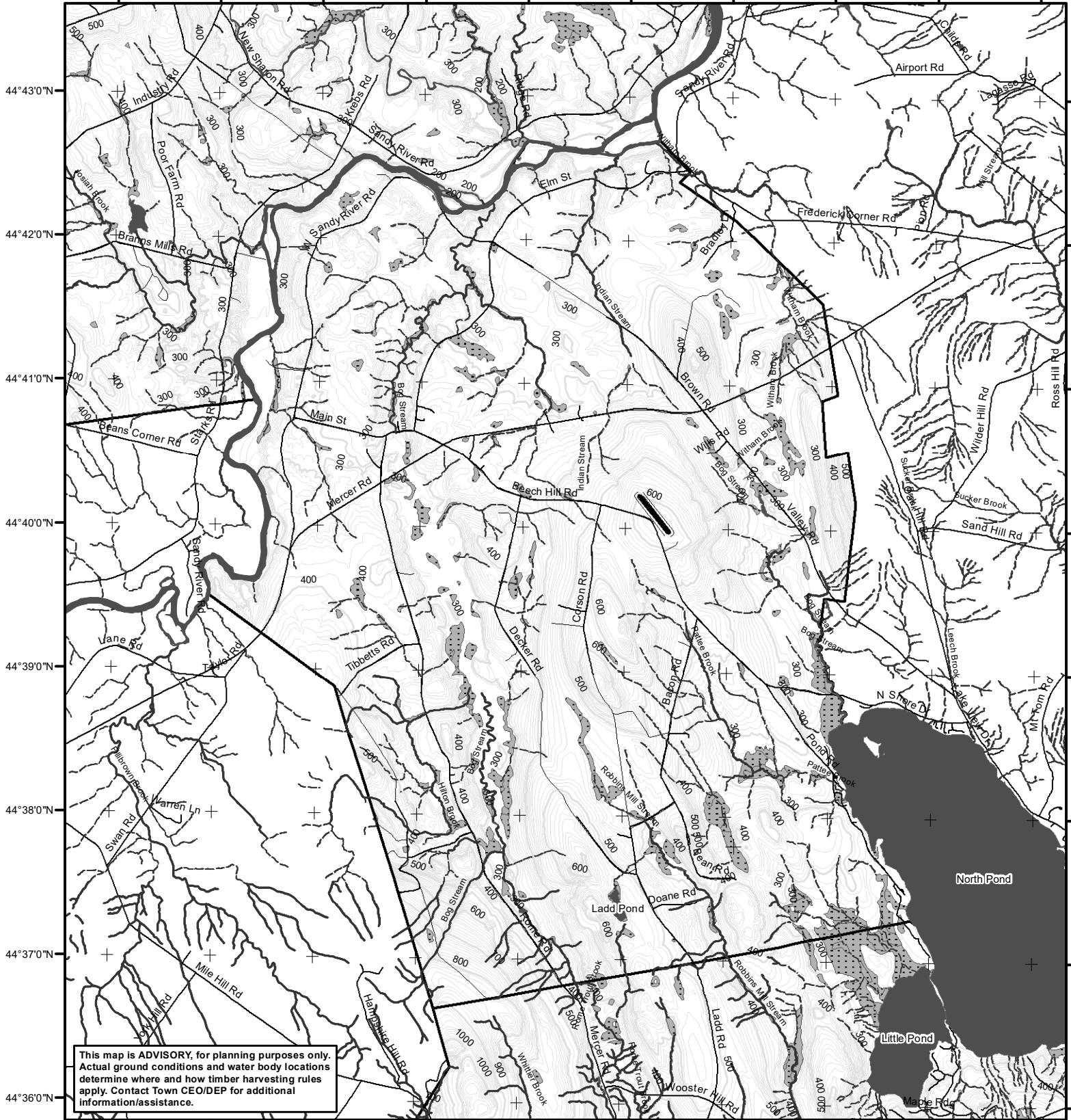


69°59'0"W 69°58'0"W 69°57'0"W 69°56'0"W 69°55'0"W 69°54'0"W 69°53'0"W 69°52'0"W 69°51'0"W 69°50'0"W



This map is **ADVISORY**, for planning purposes only. Actual ground conditions and water body locations determine where and how timber harvesting rules apply. Contact Town CEO/DEP for additional information/assistance.

LO Last Name _____
 LO First Name _____
 Prepared By _____
 FONS # _____
 Date _____

Forest Operation Notification & Harvest Location Map

Mercer

For shoreland zoning, check with Town Office/DEP

Department of Agriculture,
 Conservation and Forestry
 Maine Forest Service
 Forest Policy & Management

July 2023



Roads — E911 Roads — 24k Roads Contours — 20 feet — 100 feet Utilities = = = Electric — Pipeline — Railroad — Airfield	Freshwater Wetlands ■ Forest/Shrub Hydrology ■ Pond or Lake ■ River ■ Estuary Streams — Stream/River — Stream/River: Intermittent — Stream/River: Perennial	Town Status ■ FON Town Statewide Standards Rules do not apply (Town/MDEP Standards apply) ■ Statewide Standards Rules Apply or LUPC - Unorganized/deorganized Town ■ Outside Maine
---	---	---

Data Source: Maine Office of GIS US Fish & Wildlife

For additional information, Please contact the MFS at:
 1-207-287-2791 or 1-800-367-0223 (in-state)
 Email us at: forestinfo@maine.gov
 Or visit us on the web at: www.maineforestservice.gov