



iMapInvasives Boot Camp

Nancy Olmstead, Invasive Plant Biologist, DACF – Maine Natural Areas Program

Joe Dembeck, Executive Director, Somerset County SWCD

Maddie Eberly, Conservation Aide – Invasive Plants, MNAP

Amanda E. Beal
Commissioner

Robert G. Marvinney
Director

18 Elkins Lane
Augusta, ME 04333

(207) 287-3200
www.maine.gov/dacf

What is iMapInvasives?

- Online, all-invasive spp. mapping tool
- GIS database (AGOL)
- Central repository for invasive species data
- Data aggregator
- Network of partners
- Owned, developed, and maintained by NatureServe



iMapInvasives

Sharing information for strategic management



iMap data are required

To make maps, GIS data needed

Need uniform GIS data to report on grant

Public data helps everyone understand species distributions

Required data:

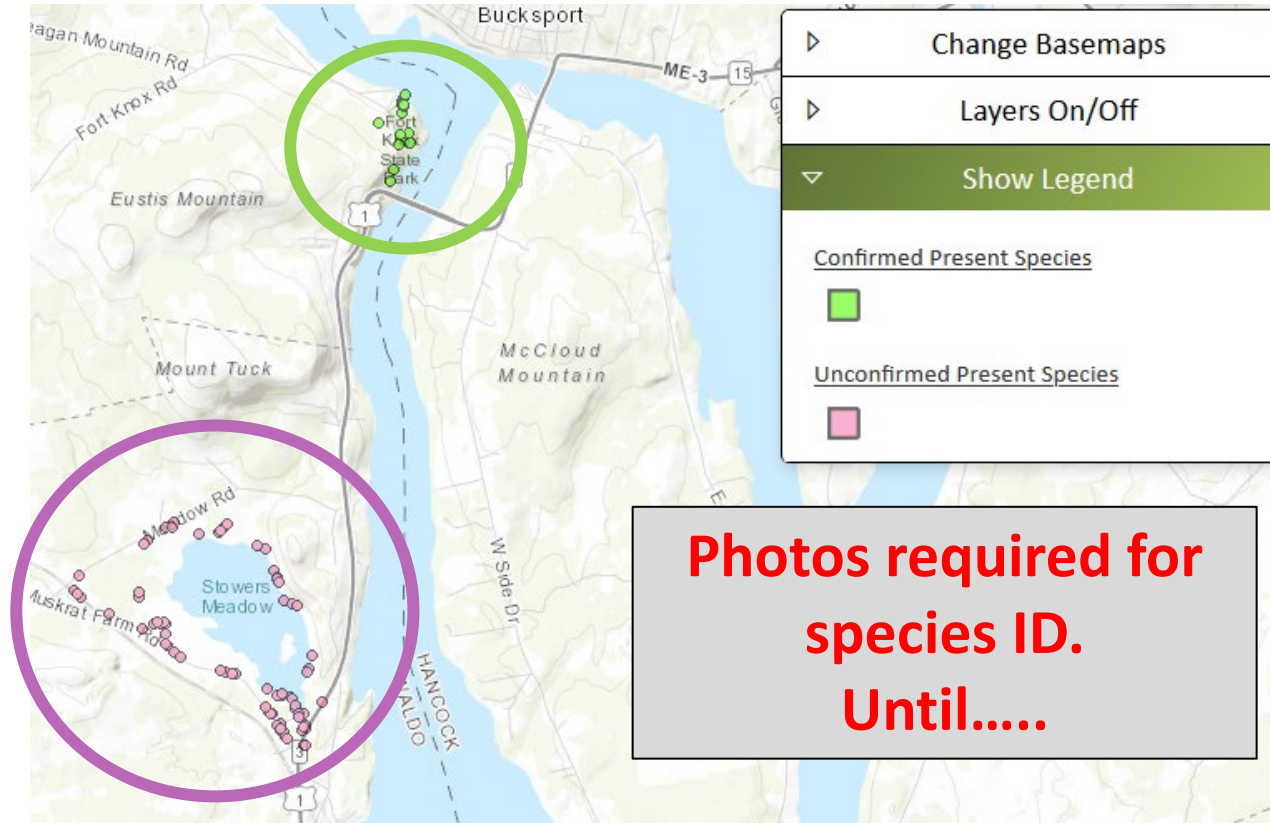
1. **Invasive plant Presences: points, polygons, and/or buffered lines**
2. **Searched area (to show Surveyed Acres)**

Data must be tagged to the Project “MFS Invasive Plant Management Program”



iMapInvasives

iMap data confirmation (QAQC)



**Photos required for
species ID.
Until.....**

iMap website housekeeping

Selecting a browser

- Chrome = best
- Mozilla Firefox = very good
- Edge = good, though limited experience
- Internet Explorer, Safari = bad, do not recommend



***Clear the browser cache (daily)! Then re-launch.
Keep the browser up to date!***

Several ways to collect data

1. Basic iMap app on phone or tablet – point data

2. Datasheet or notebook, GPS

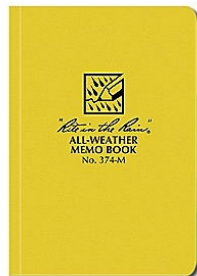
3. Print paper map, draw on it, key it to notebook or datasheet

Mobile iMapInvasives
Field Form - Multiple Observations

Observer name: _____ Date: _____
 Location: _____ Enter data at: www.imapinvasives.org/chems/chem
 Project (if applicable): _____

Observer name*	Location*	Date*	Species name	Latitude*	Longitude*	Map Date	Notes

* This screen contributes to form iMAPInvasives. It includes species, regions, dates, latitude and GPS Data ID.
 * Check an observation is entered. * Map Invasives for the user observation. You may wish to report this ID.



Several ways to collect data

4. From smartphone or tablet *browser*

- Only if you have connectivity
- Can see where you are (Find me button)
- Create data by *drawing on screen*



Review: App vs browser



Mobile app: collect Point data
Download to your mobile phone or tablet, *no connectivity needed to collect data*; upload later on wireless (or through data plan)

Browser: see map, enter all record types, manage your account
Browser-based interface for your desktop, tablet, or mobile phone, *with connectivity*

iMap App setup



Mobile app: collect Point data

Requires an iMap account FIRST

Must set your Preferences within the App

Refresh iMap lists from time to time when prompted

iMapInvasives Mobile App for Android or Apple

Report invasive species locations using your tablet or smartphone

1. Request a free iMapInvasives account at www.imapinvasives.org. You can't use the App w/o an account.
2. Then, download the app from Google Play or Apple App Store (search for "imapinvasives").
3. Enable location on your device (from device Settings, turn on Location)

4. Home Page and Menu

From the home page users can add a new observation record and access the Menu at top left (tap three bars). The home page looks very plain until you start adding records.

5. Fill in your Preferences (required)

Fill in your iMapInvasives account information and set other preferences.

- a) Select Jurisdiction
- b) Enter iMap email and Password (must match online account!)
- c) Select to view scientific or common species names and create a custom list (optional).
- d) Choose photo settings
- e) Select map preferences
- f) Select default project (optional)
- g) Select organization (optional)
- h) Save your changes!

6. Add an Observation Record

Tap the green +Add Observation button to start adding an observation. *See reverse for details!*

7. Upload or edit pending records

Created records appear in home screen. To change something, tap pencil icon. To upload, tap box or Select All from Menu, then choose Upload Selected.

Manually tap box or choose Select All from the Menu, then Upload Selected to send your data into iMap.

iMap datasheet - points

Maine iMapInvasives
Point Presence Record Datasheet

Observer name:
Date:
Location:
Project (if applicable):

Photo 1 #	Photo 2 #	Species name	Latitude*	Longitude*	Number found	iMap Record ID^	Notes

*i Map accepts coordinates in decimal degrees, e.g., Latitude 44.3059, Longitude -69.7748
^Once a record is entered, i Map generates a unique ID - you may wish to record this ID

Contact invasives.mnap@maine.gov with any questions or to request an iMap account. Page ___ of ___

iMap datasheet – polygons 1

**Maine iMapInvasives
Polygon Presence Record Datasheet**

Observer Name:			Project (if applicable):			
Date:			Location:			
Basic Information			Details		Adv. Details	(later)
Species	Photo #s	Location information (GPS coordinates of corners, key to shapes on map, etc.)	Percent Cover Class (see graph)	Distribution	Phenologies	Woody Plant: Mature, seedling or both? iMap record ID#*
1						
2						
3						
4						
5						
6						
7						
8						
9						
10						

* Once a record is entered, iMap generates an ID# for each record - you may wish to record this ID

Percent Cover Class

A (<5%) B (5-25%)
C (25-50%) D (50-75%) E (75-100%)

Distribution:

- Trace (single plant/clump)
- Sparse (scattered plants/clumps)
- Dense plants/clumps
- Monoculture
- Linearly scattered

Phenologies:

- Flowers
- Fruits
- Seeds
- Vegetative

Add comments on reverse.

Page ___ of ___

iMap datasheet – polygons 2

Maine iMapInvasives
Polygon Presence Record Datasheet

Presence Polygon Comments:

1	
2	
3	
4	
5	
6	
7	
8	
9	
10	

Page ___ of ___

iMap Live Demo...

- Navigation tools
- Your Account
 - Request Project, Organization membership
- Layers box on right
 - Basemaps
 - Layers On/Off
 - Show Legend
- Simple Create Record workflow; tag record to Project

iMap Boot Camp - Part 2/Day 2

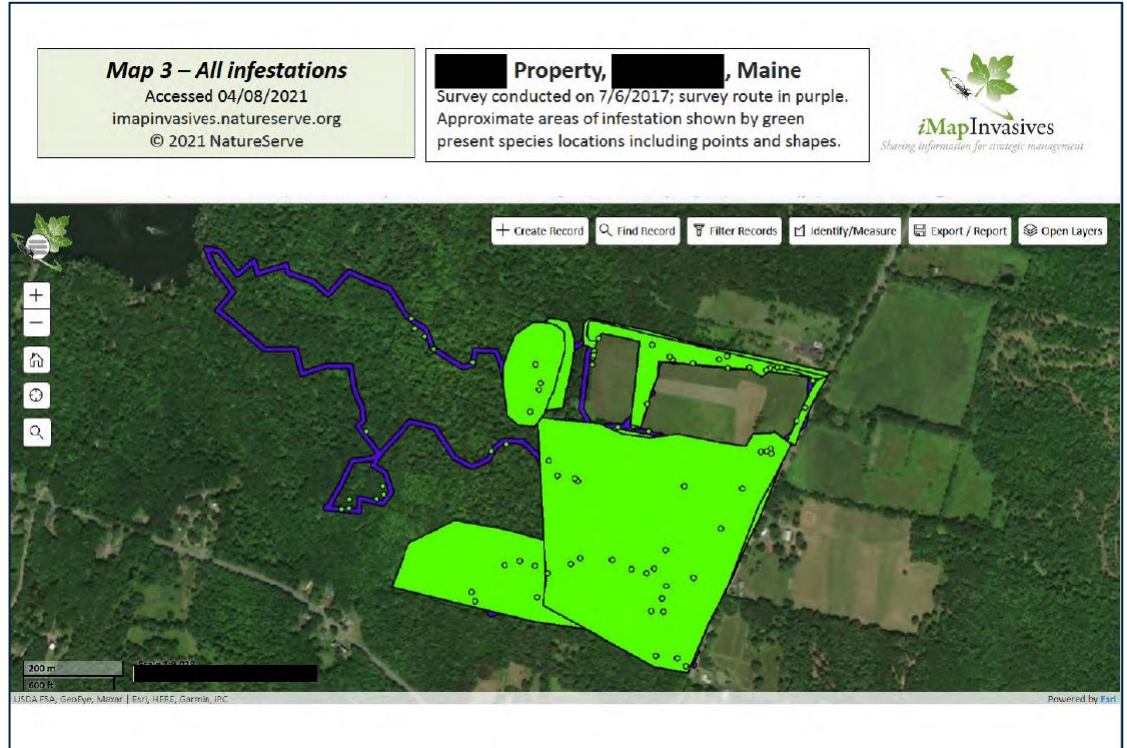


iMapInvasives

Sharing information for strategic management

Making maps from iMap data

1. Screen capture from iMap into PowerPoint template
2. Export Confirmed iMap data into ArcGIS or other mapping software



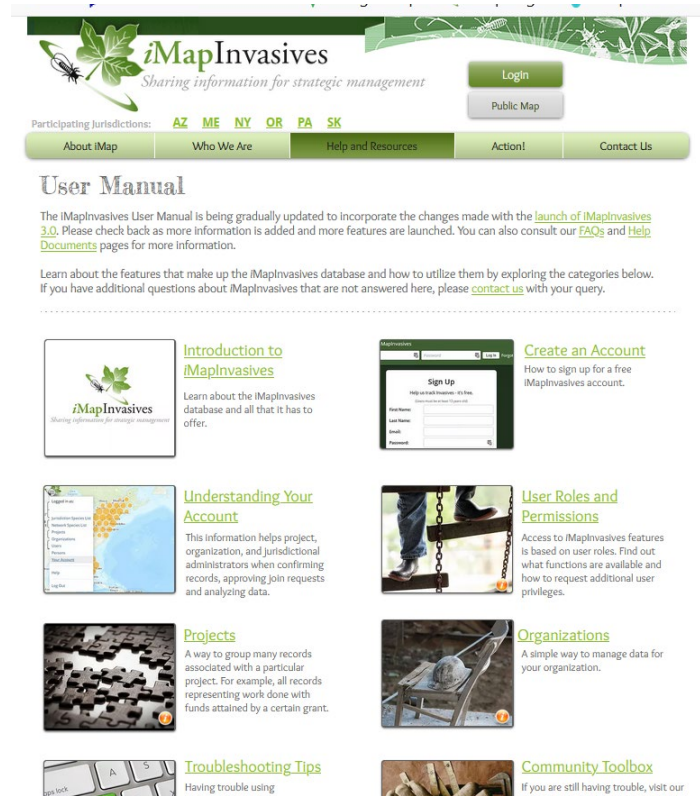
iMap online help resources

iMap Network help documents

www.imapinvasives.org

New York iMap Resources – recorded webinar trainings

www.nyimapinvasives.org



The screenshot shows the iMapInvasives website interface. At the top, there is a green header with the iMapInvasives logo and the tagline "Sharing information for strategic management". Below the header, there are navigation tabs for "About iMap", "Who We Are", "Help and Resources", "Action!", and "Contact Us". The "Help and Resources" tab is currently selected. Below the navigation tabs, there is a "User Manual" section with a brief introduction and a link to "Learn about the features that make up the iMapInvasives database and how to utilize them by exploring the categories below." Below this, there are several help resources listed in a grid format, each with a small image and a title:

- Introduction to iMapInvasives**: Learn about the iMapInvasives database and all that it has to offer.
- Create an Account**: How to sign up for a free iMapInvasives account.
- Understanding Your Account**: This information helps project, organization, and jurisdictional administrators when confirming records, approving join requests and analyzing data.
- User Roles and Permissions**: Access to iMapInvasives features is based on user roles. Find out what functions are available and how to request additional user privileges.
- Projects**: A way to group many records associated with a particular project. For example, all records representing work done with funds attained by a certain grant.
- Organizations**: A simple way to manage data for your organization.
- Troubleshooting Tips**: Having trouble using
- Community Toolbox**: If you are still having trouble, visit our

iMap Live Demo...

- Tools: Filter Records; Identify/Measure; Export/Reports
- Multi-Record Searched Area workflow
- Entering Searched Area to show surveyed area
- Entering survey route as ND record
- Simple screenshot maps
- Export data to make maps in some other tool

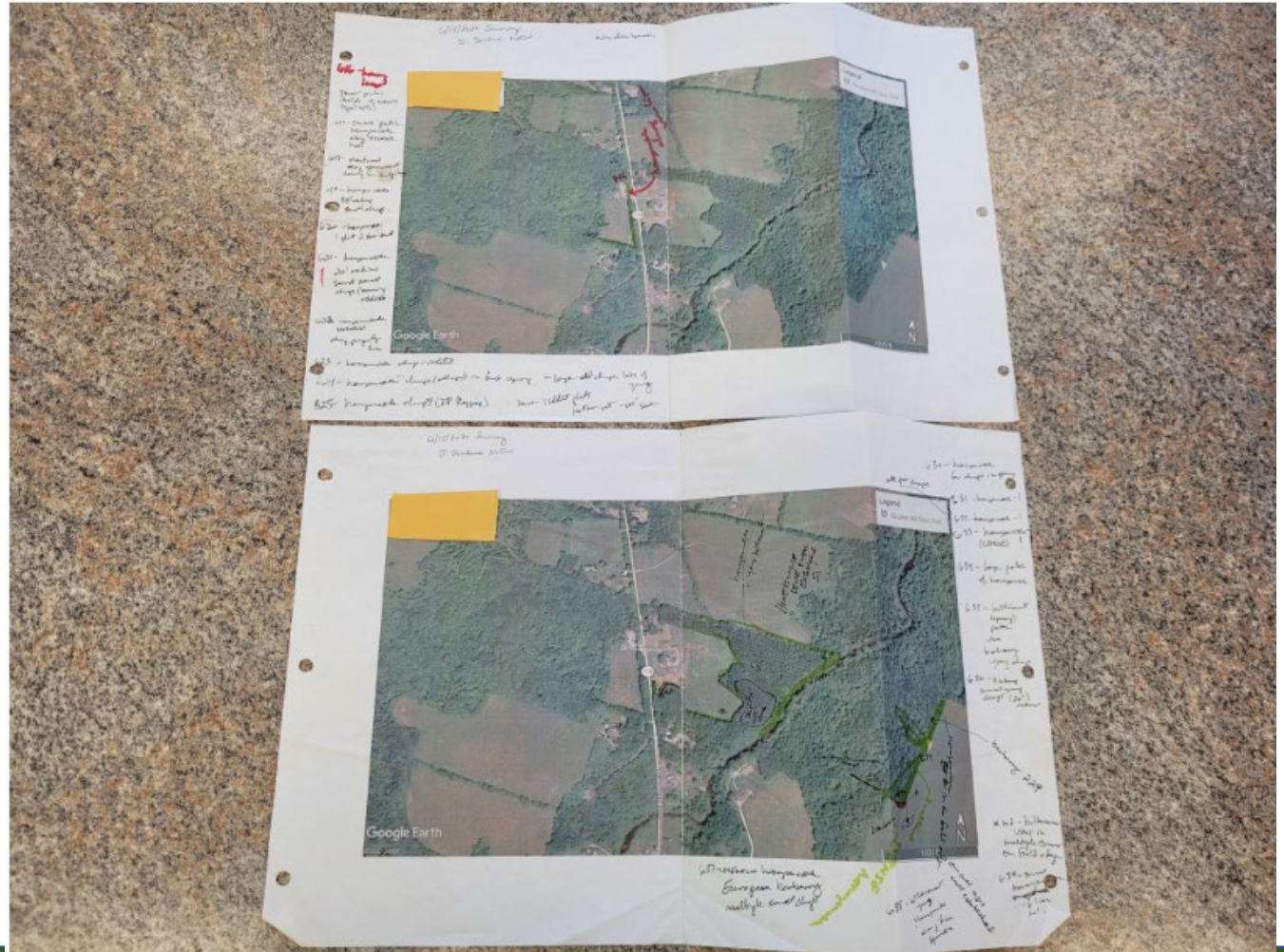
Other tools to assist data entry workflow

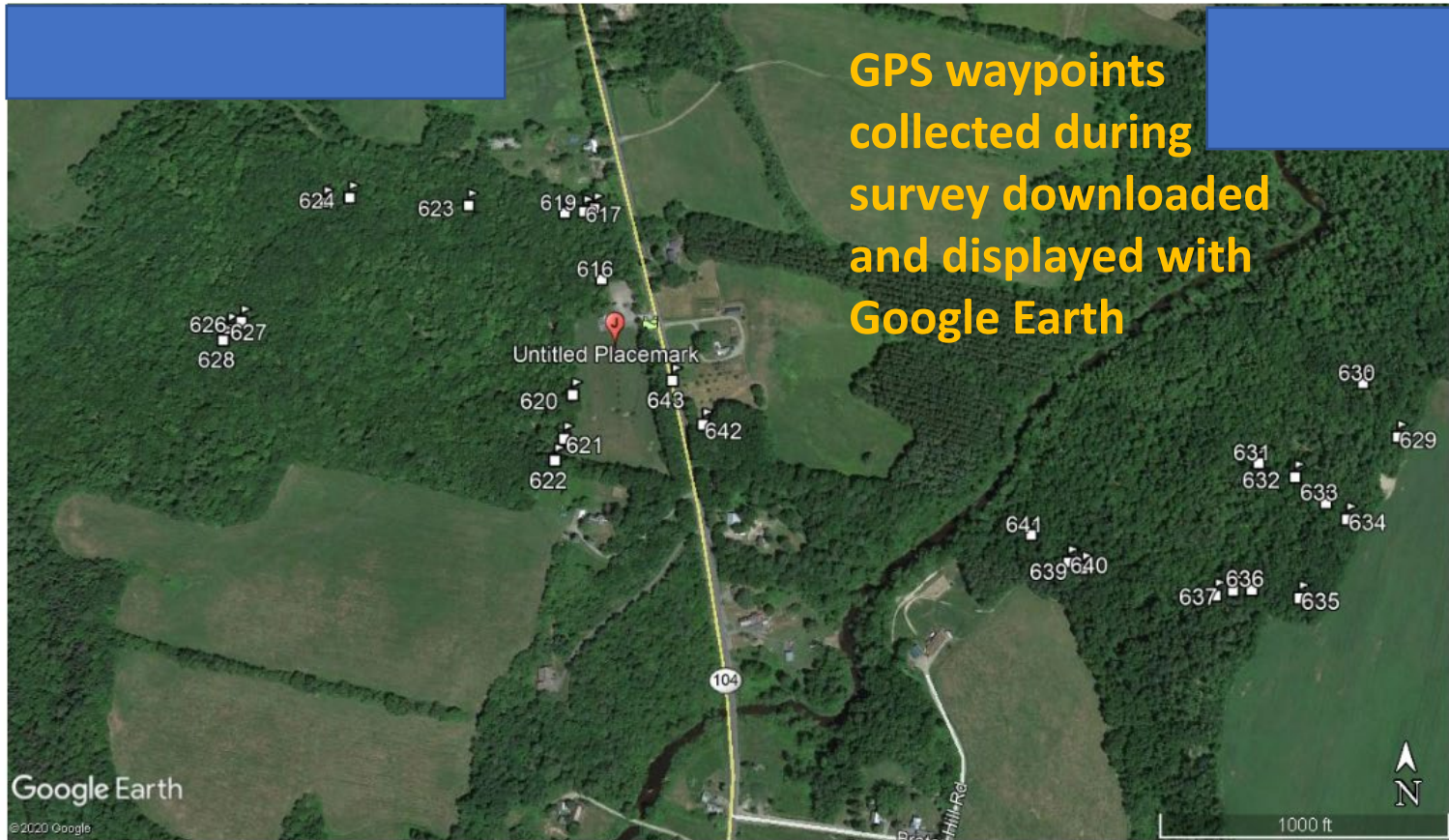
- Google Earth
- Avenza Maps

Other tools – Google Earth with gpx waypoints

- Field datasheet information (Picture 1)
- GPS waypoints collected during survey downloaded and displayed with Google Earth
- The Final Product in iMapInvasives!

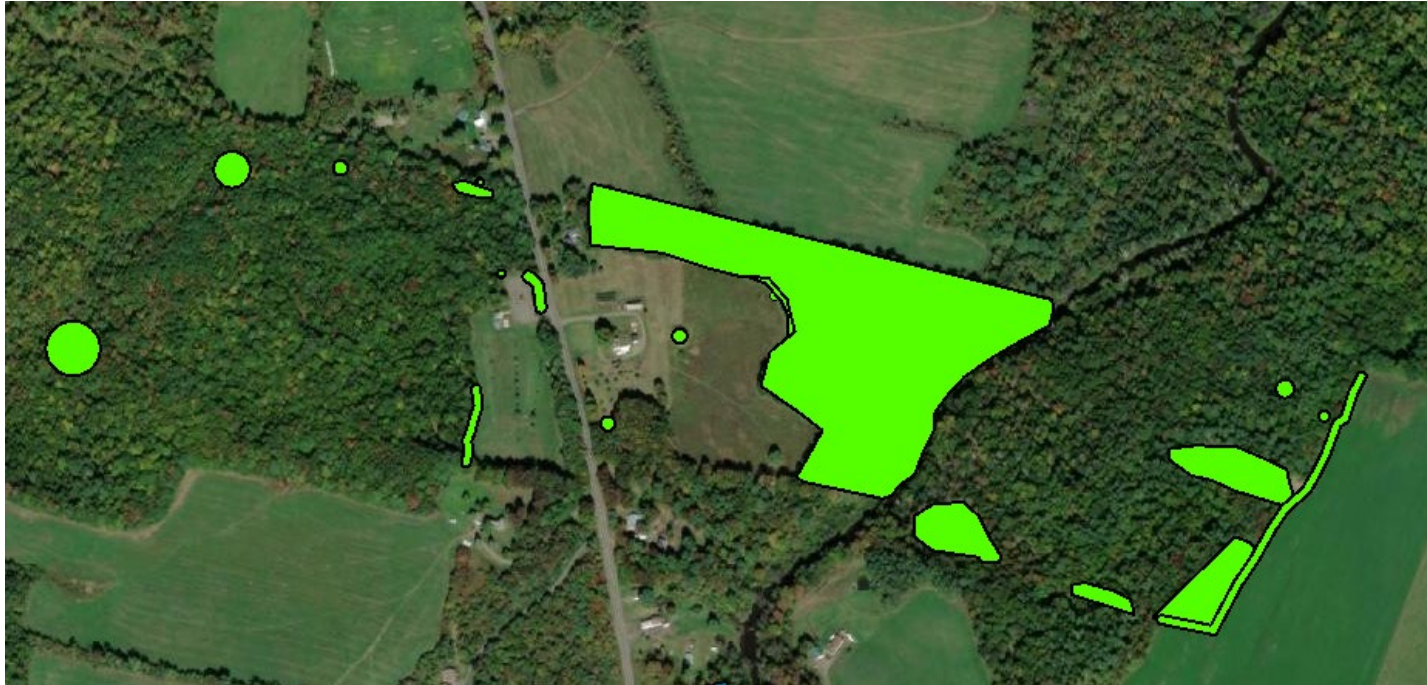
Field datasheet/map information





**GPS waypoints
collected during
survey downloaded
and displayed with
Google Earth**

The Final Product in iMapInvasives

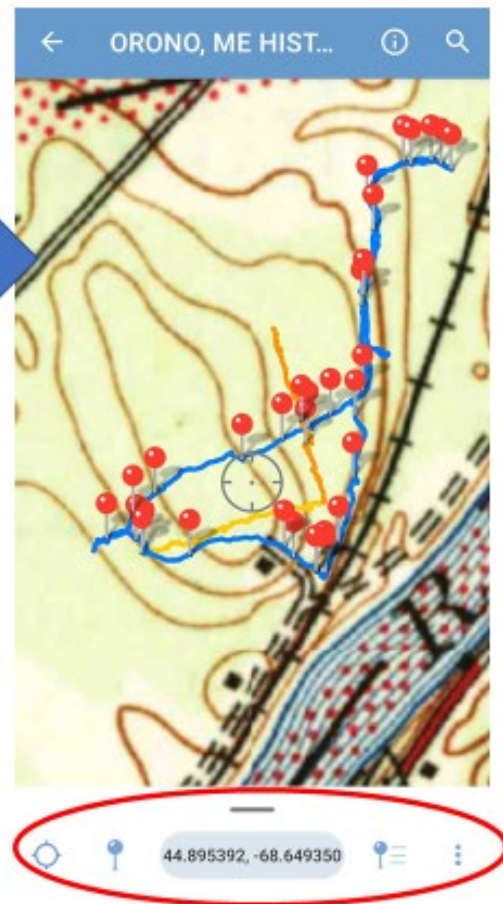
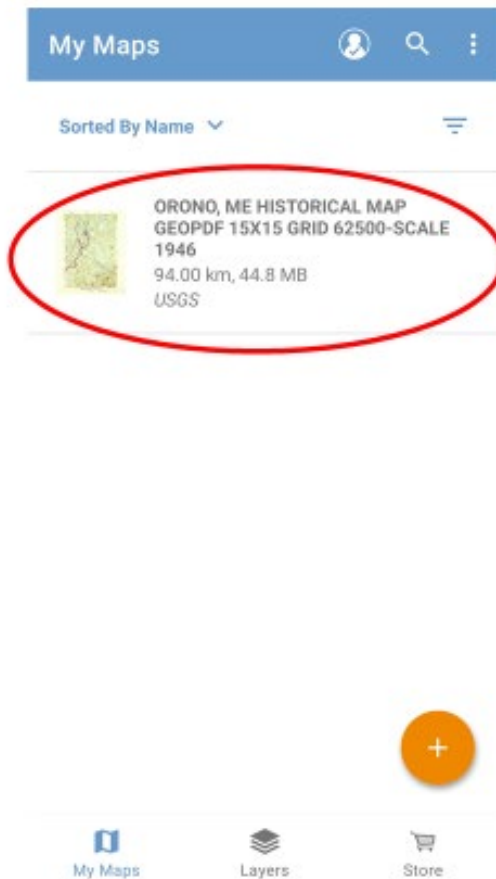


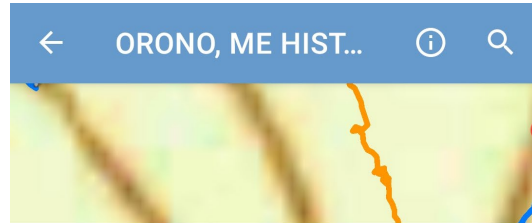
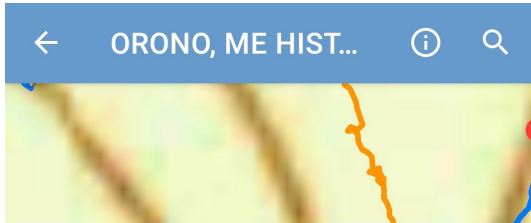
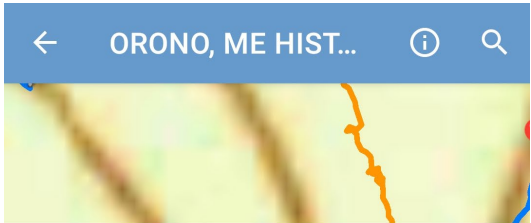
Other tools – Avenza Maps



Avenza Maps®

- Download in App store for phones or tablets
- For better help and support use:
www.avenzamaps.com







Edit Placemark

Title

shrubby honeysuckle



Information



Symbol
Red Pin

Photos



Description

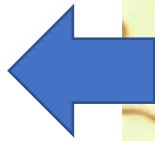
Location

44.894192, -68.648388

Time

10/7/20 2:51 PM

Attributes



ORONO, ME HIST...



Layer



Go back to Map Layers



asiatic bittersweet

Wed Oct 07 14:55:14 EDT 2020



asiatic bittersweet

Wed Oct 07 15:28:43 EDT 2020



beech bark disease

Wed Oct 07 14:42:07 EDT 2020



black locust

Wed Oct 07 15:54:03 EDT 2020



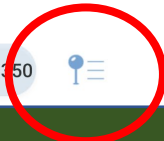
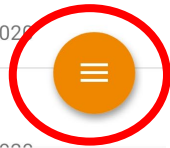
black locusts

Wed Oct 07 14:37:40 EDT 2020



coltsfoot

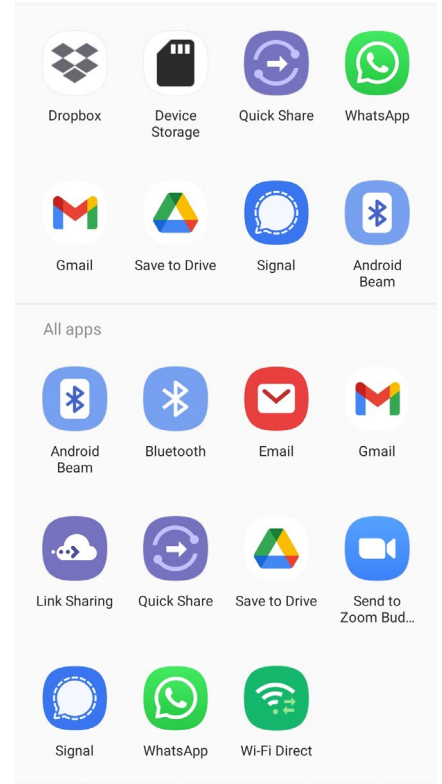
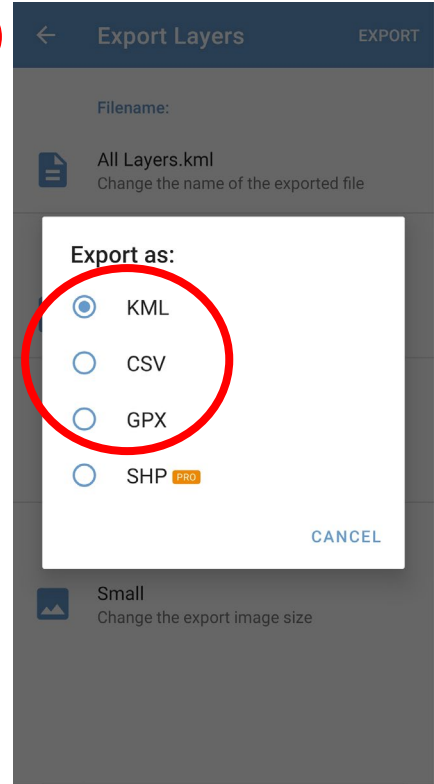
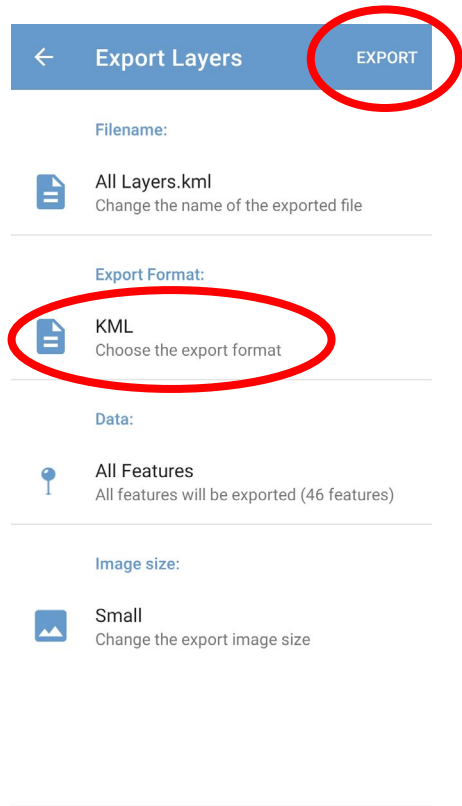
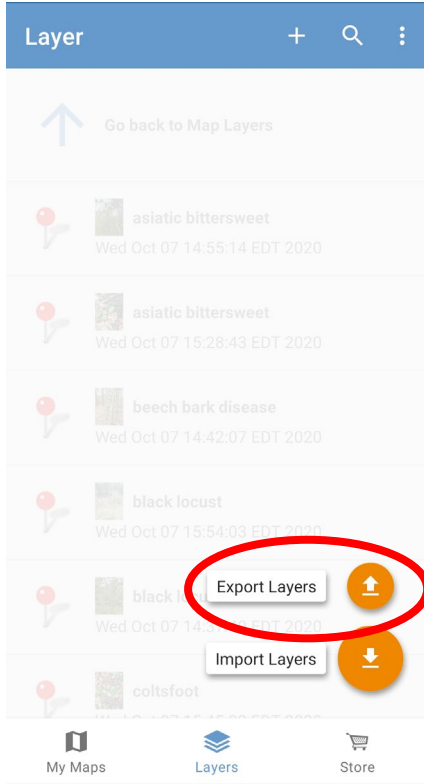
Wed Oct 07 15:45:00 EDT 2020



My Maps

Layers

Store





Thank You!

Nancy.Olmstead@maine.gov; 207-287-8046

