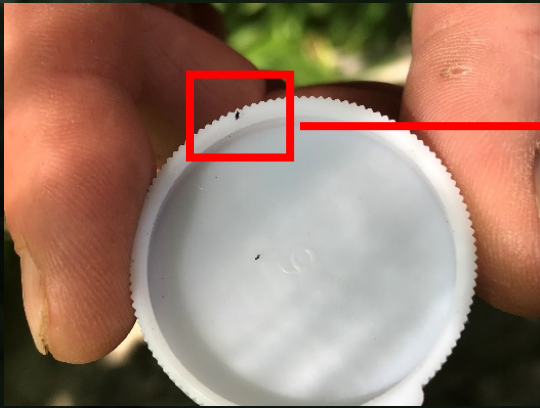


Emerald Ash Borer Biocontrol in Maine

Three tiny, non-stinging parasites released at suitable sites with EAB



Oobius agrili
parasitizes
EAB eggs on
ash bark



Tetrastichus planipennis
parasitizes
EAB larvae
under ash
bark



Spathius galinae
parasitizes
EAB larvae
under ash
bark

These parasites will not save the trees standing now, but they should help the next generation of ash to survive.

www.maine.gov/eab

Photos: Maine
Forest Service &
UMFK Forestry

