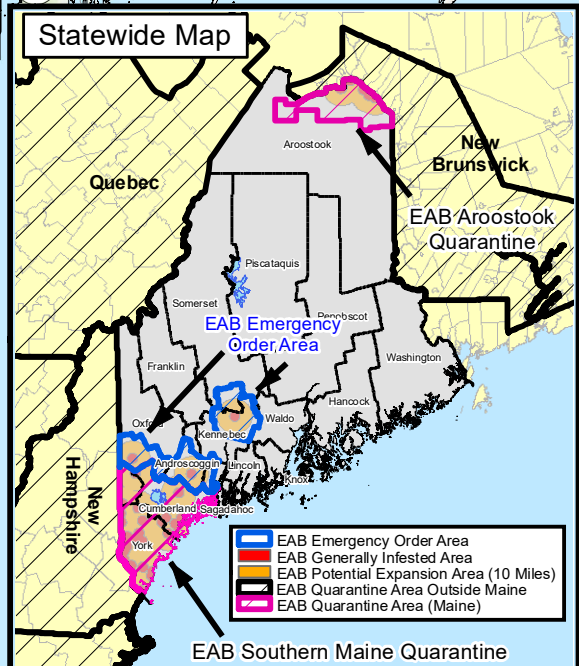
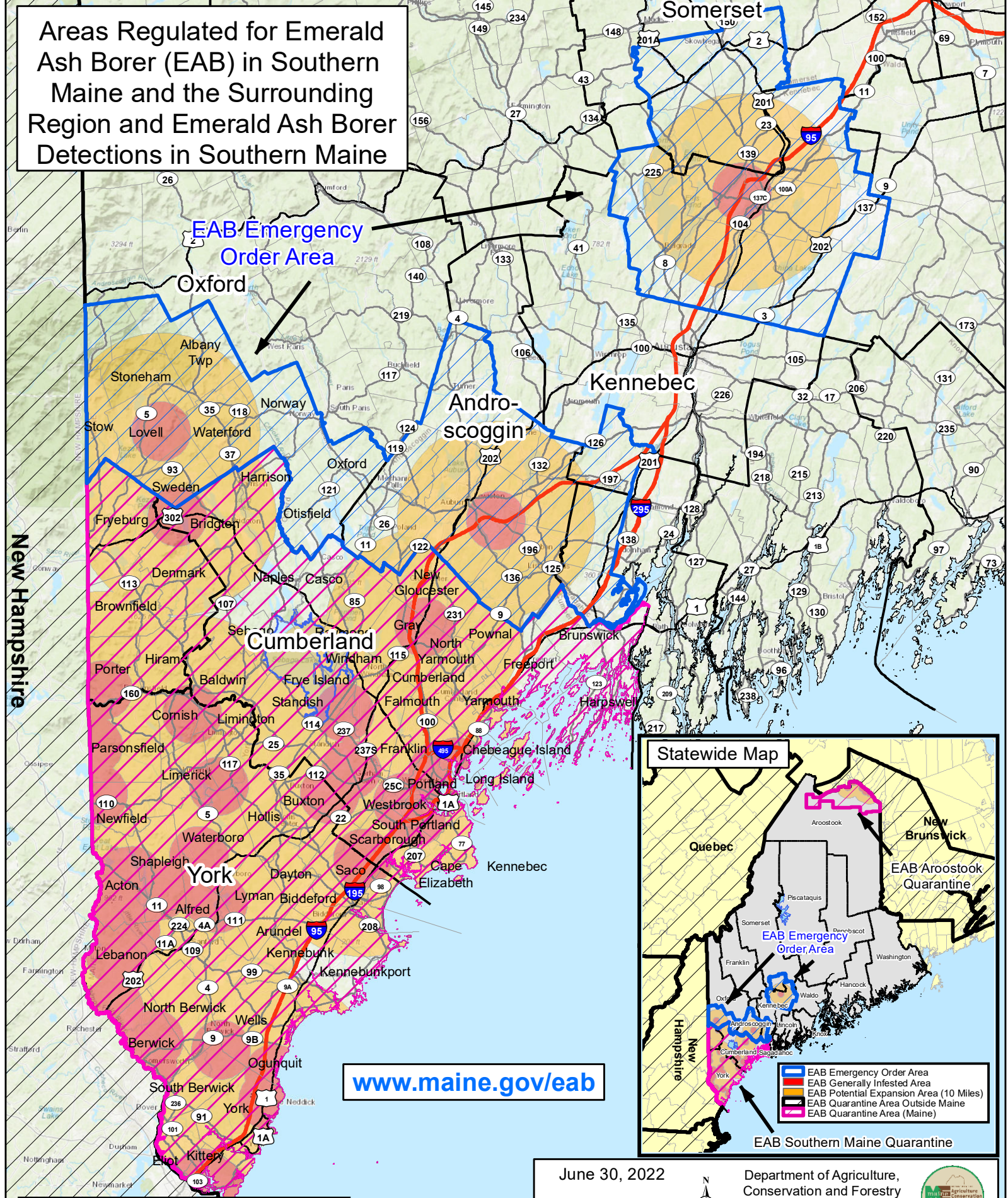


# Areas Regulated for Emerald Ash Borer (EAB) in Southern Maine and the Surrounding Region and Emerald Ash Borer Detections in Southern Maine


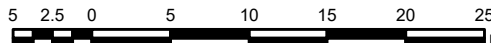



[www.maine.gov/eab](http://www.maine.gov/eab)

- EAB Emergency Order Area
- EAB Generally Infested Area
- EAB Potential Expansion Area (10 Miles)
- EAB Quarantine Area Outside Maine
- EAB Quarantine Area (Maine)

June 30, 2022

Department of Agriculture,  
Conservation and Forestry  
Maine Forest Service  
Forest Health & Monitoring

Source: NPS, Esri, and other contributors. URL: [www.maine.gov/eab/detections2022/eab-quarantine-southern-maine-07012022.mxd](http://www.maine.gov/eab/detections2022/eab-quarantine-southern-maine-07012022.mxd)