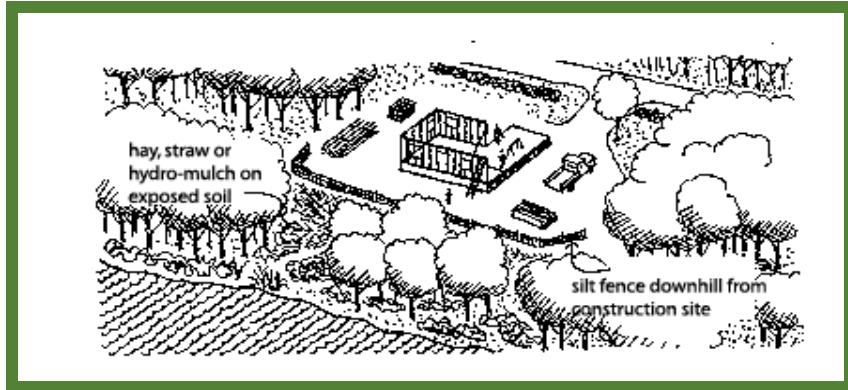


STABILIZATION

Filled or graded areas, including all areas of disturbed soil, within 250 feet of P-WL subdistricts, must be promptly stabilized according to the Guidelines for Vegetative Stabilization contained in Appendix B of Chapter 10 of the Commission's Rules and Standards.



FOR MORE INFORMATION, PLEASE CALL

<p>Main Office Augusta, ME (207) 287-2631</p>	<p>Moosehead Region Serving Somerset County and most of Piscataquis County (207) 349-0941 or (207) 557-2874</p>
<p>Northern Region Serving Aroostook County northwest of Interstate 95, and Northern Penobscot and Piscataquis Counties (207) 435-7970, or (207) 435-7969</p>	<p>Eastern Region Serving Southern Penobscot and Southern Aroostook Counties, Northern Washington County, and part of Piscataquis County Tel. (207) 485-8354 or (207) 399-2176</p>
<p>Downeast Office Serving Hancock, Knox, and Lincoln Counties; part of Penobscot, Piscataquis, and Washington Counties; and the unorganized Coastal Islands Tel. (207) 592-4448 or (207) 215-4685</p>	<p>Western Region Serving Franklin and Oxford Counties Tel. (207) 670-7492 or (207) 670-7493</p>

Illustrations on pages 2, 3, and 4 are modified from those included in the Maine Shoreland Zoning Handbook and The Buffer Handbook published by the Maine Department of Environmental Protection, in 1998 and 2011 respectively.

FILLING AND GRADING STANDARDS

As outlined in Chapter 10 of the Commission's Land Use Districts and Standards



Photo credit: Maine Dept. of Environmental Protection

Department of Agriculture, Conservation and Forestry
Land Use Planning Commission
 22 State House Station
 Augusta, Maine
 04330-0022

www.maine.gov/dacf/lupc

THE FILLING AND GRADING STANDARDS APPLY TO:

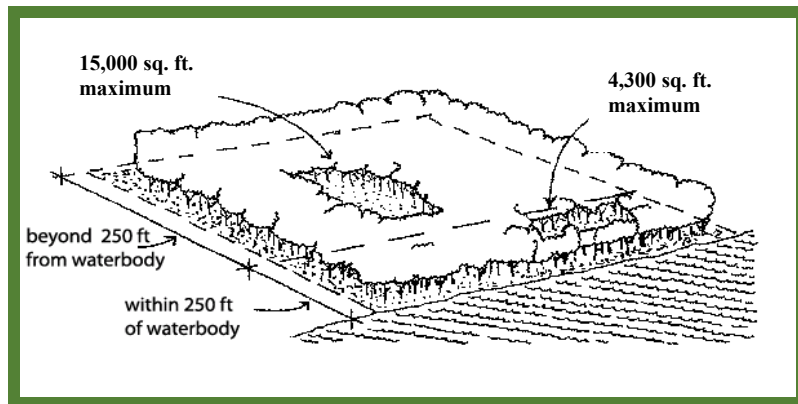
Minor filling and grading in all subdistricts in the LUPC's service area. If the standards within this brochure cannot be met, then a permit is needed for the activity.

These standards do not apply to filling or grading activities which constitute forest or agricultural management activities, the construction, reconstruction and maintenance of roads, or the construction of public trailered ramps, hand-carry launches, or driveways. Those activities are separately regulated.

MAXIMUM SIZE OF FILLED AND GRADED AREAS

The maximum allowable size of filled or graded areas (including all areas of mineral soil disturbed by the filling or grading activity) on any single lot or parcel is:

- **4,300 sq. ft** within 250 feet of mapped Wetland Protection Subdistricts for water bodies and certain wetlands (P-WL1 subdistricts), and
- **15,000 sq. ft** more than 250 feet from P-WL1 subdistricts*



***Except in M-GN subdistricts** greater than 250 feet from P-WL1 subdistricts the limit to the size of filled or graded areas is **1 acre**.

CLEARING

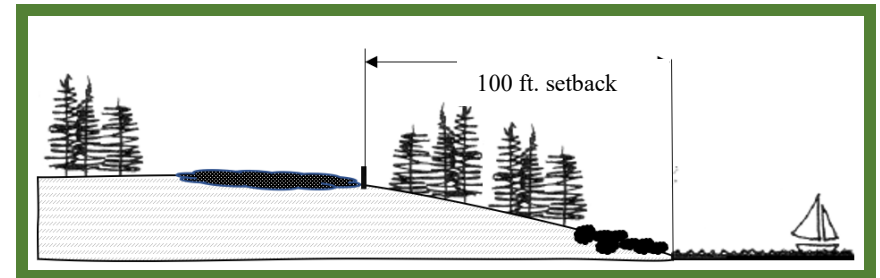
Clearing of areas to be filled or graded is subject to the clearing standards of Chapter 10, Section 10.27,B. The clearing standards are covered in a separate brochure.

WATERBODY AND WETLAND SETBACKS

Where filled or graded areas are near water bodies or wetlands, the filled or graded areas must be setback:

- **75 feet** from small streams, lakes and ponds less than 10 acres in size*, coastal wetlands, and freshwater wetlands in P-WL1 subdistricts, and
- **100 feet** from larger rivers and lakes and ponds greater than 10 acres in size.

Note: the sustained slope between filled or graded areas and the water body or wetland must be less than 20 percent.



*The 75-foot setback for small lakes and ponds does not apply to constructed ponds as defined in LUPC's Chapter 10 rules.

NO HAZARDOUS OR TOXIC MATERIALS

All fill must be free of hazardous or toxic materials. Fill within 250 ft of P-WL1 subdistricts must also not contain debris, trash, or rubbish.