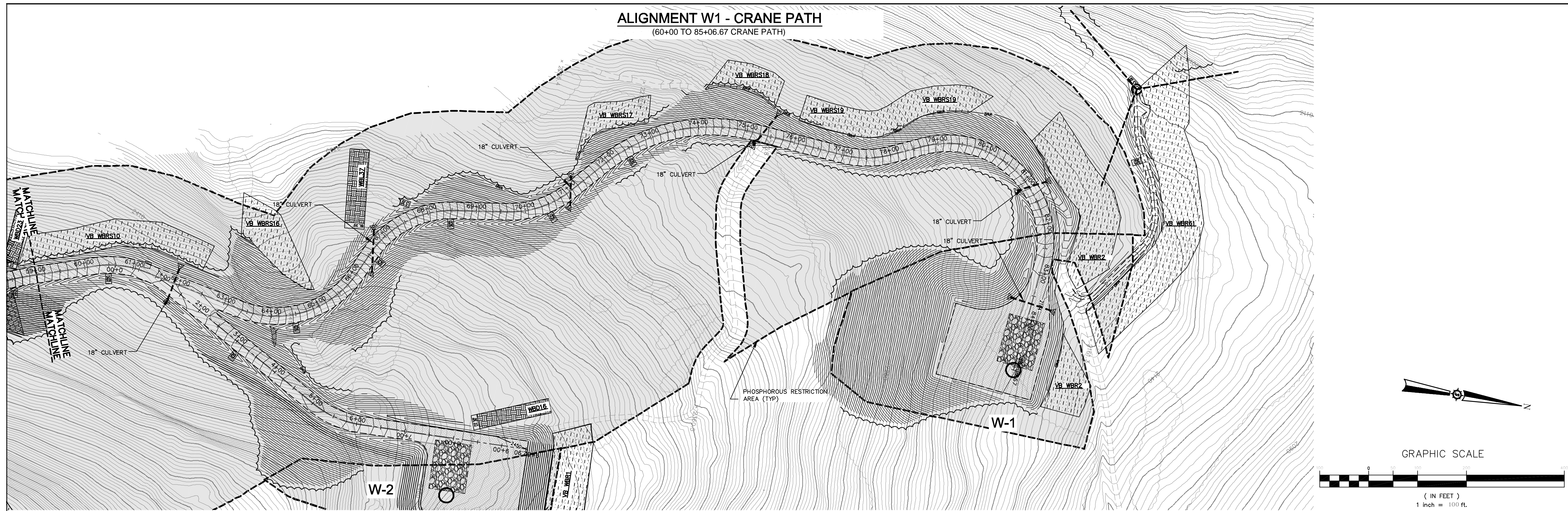


**ALIGNMENT W1 - CRANE PATH**  
(60+00 TO 85+06.67 CRANE PATH)



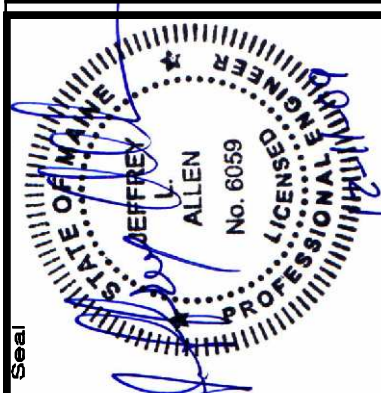
**ALIGNMENT W3 - CRANE PATH**  
(0+00 TO 26+75.79 CRANE PATH)



Rev. #	Drawn By	Description

Designed By	JCA
Date	12/11/2009
Scale	1"=100'
Checked	JCA

**HIGHLAND WIND PROJECT**  
**HIGHLAND WIND LLC**  
Project Location  
HIGHLAND PLANTATION  
Drawing Description  
**ALIGNMENT W-1, 3 SEDIMENTATION & EROSION CONTROL PLANS**

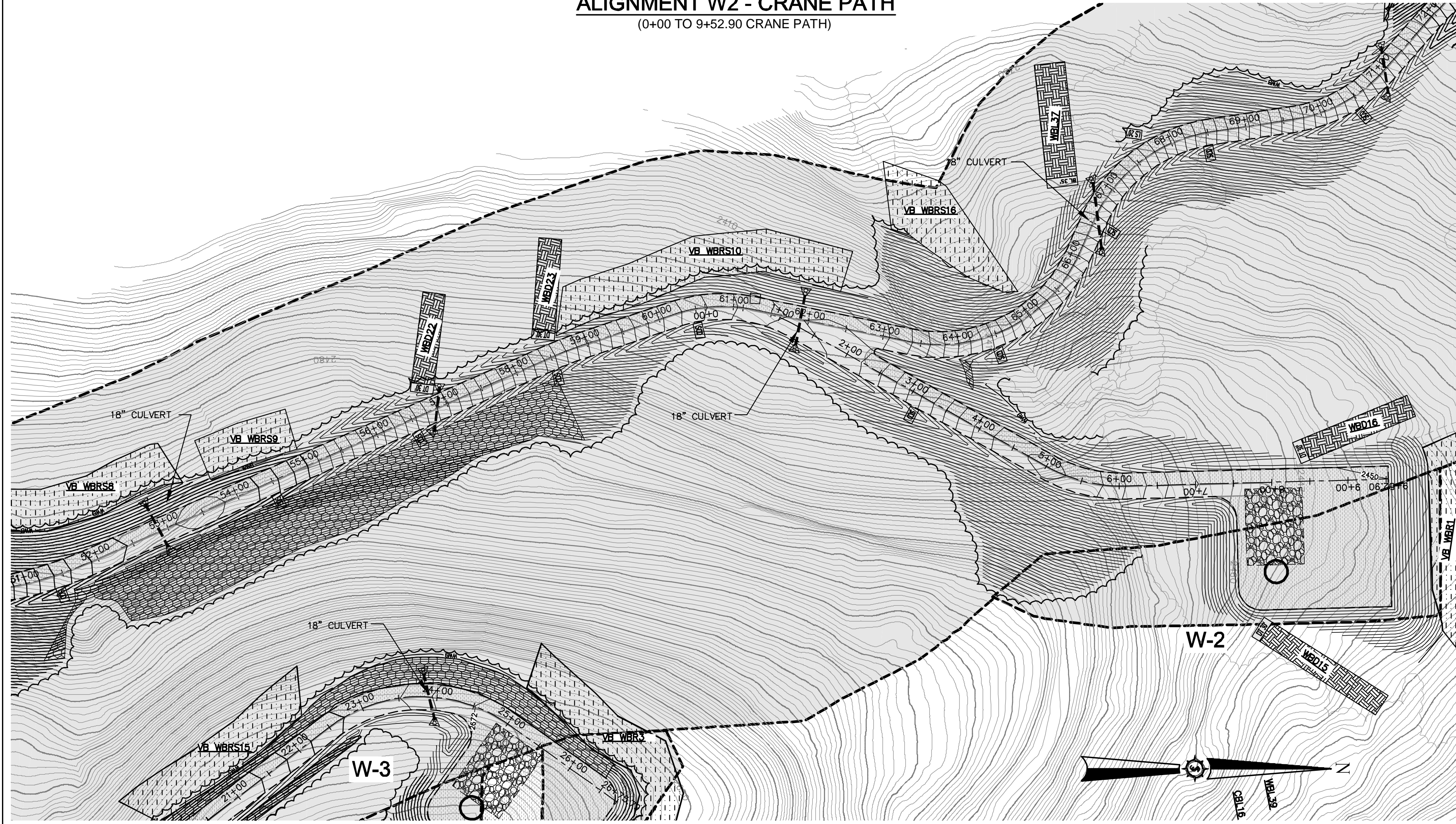


Project No. **66060E**  
Engineer  
**SEWALL**  
AN INTEGRATED TEAM OF  
GEOSPATIAL ENGINEERING,  
SURVEYING AND NATURAL  
RESOURCE CONSULTANTS  
JAMES W. SEWALL COMPANY / Since 1880  
800 686 7402  
SEWALL.COM

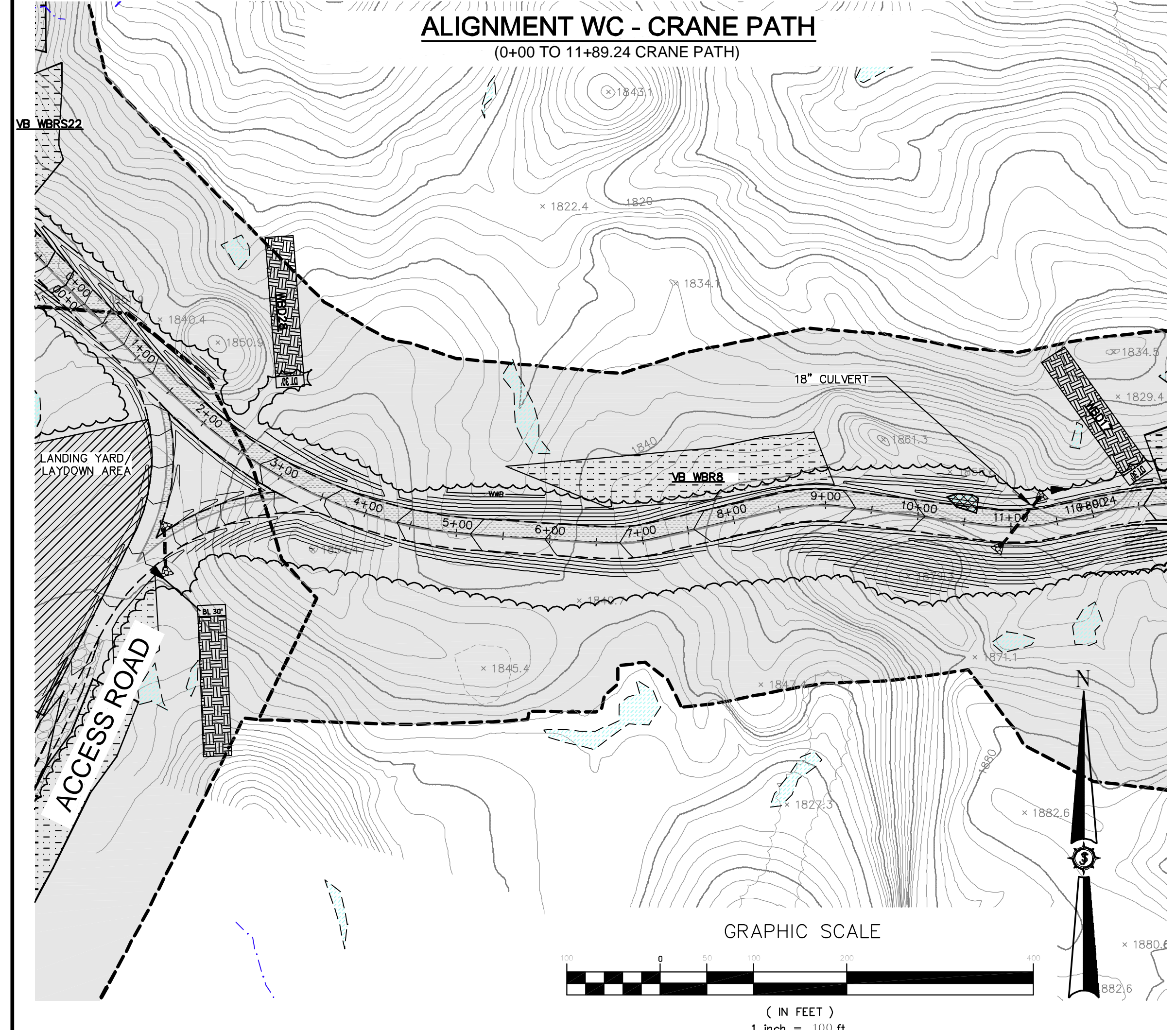
Phase  
**PERMIT**  
Sheet No.  
**C-505**

**NOT FOR CONSTRUCTION**

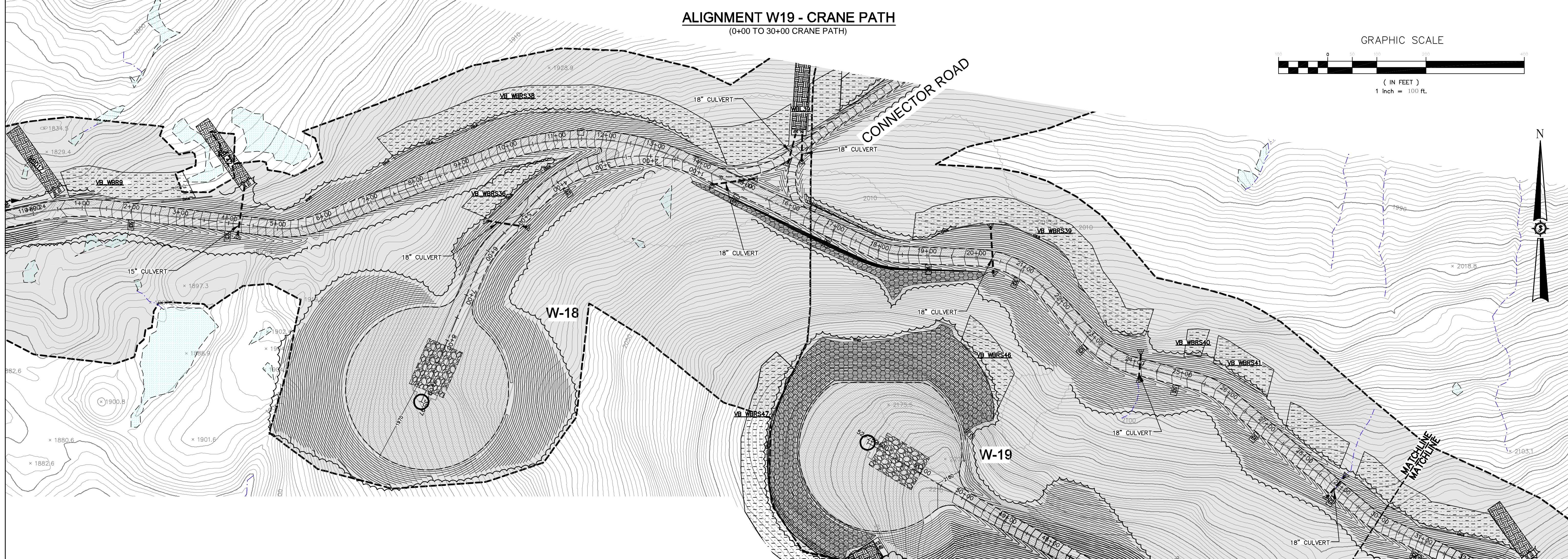
**ALIGNMENT W2 - CRANE PATH**  
(0+00 TO 9+52.90 CRANE PATH)



**ALIGNMENT WC - CRANE PATH**  
(0+00 TO 11+89.24 CRANE PATH)



**ALIGNMENT W19 - CRANE PATH**  
(0+00 TO 30+00 CRANE PATH)



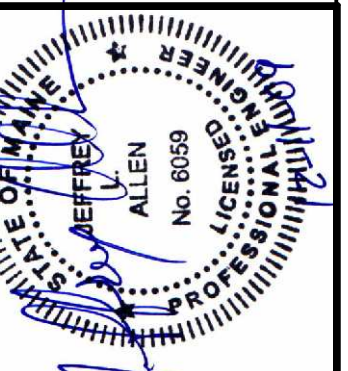
Rev. #	Drawn By	Description	Date

**HIGHLAND WIND PROJECT**  
**HIGHLAND WIND LLC**

Project Location: HIGHLAND PLANTATION

Drawing Description: ALIGNMENT W-C, 2, 19 SEDIMENTATION & EROSION CONTROL PLANS

Drawn By: JLA  
Date: 12/11/2009  
Scale: 1"=100'  
Checked: JLA



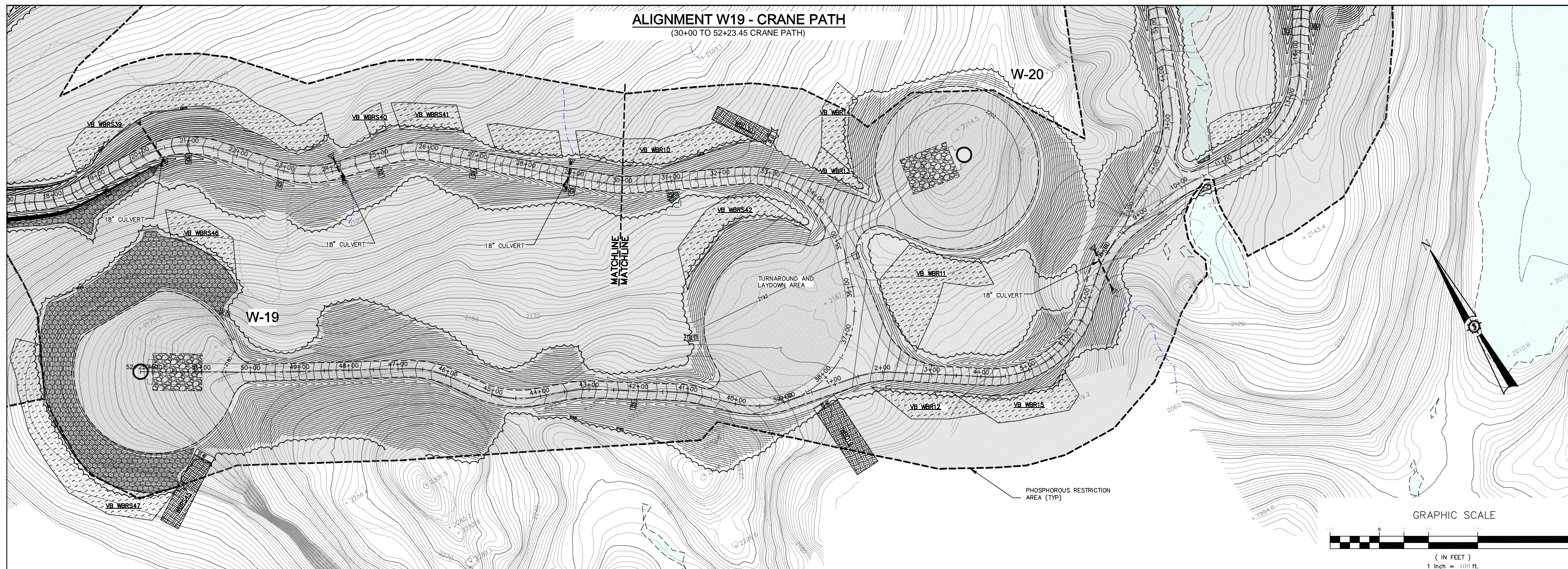
66060E

**SEWALL**  
AN INTEGRATED TEAM OF  
GEOSPATIAL ENGINEERING,  
SURVEYING AND NATURAL  
RESOURCE CONSULTANTS

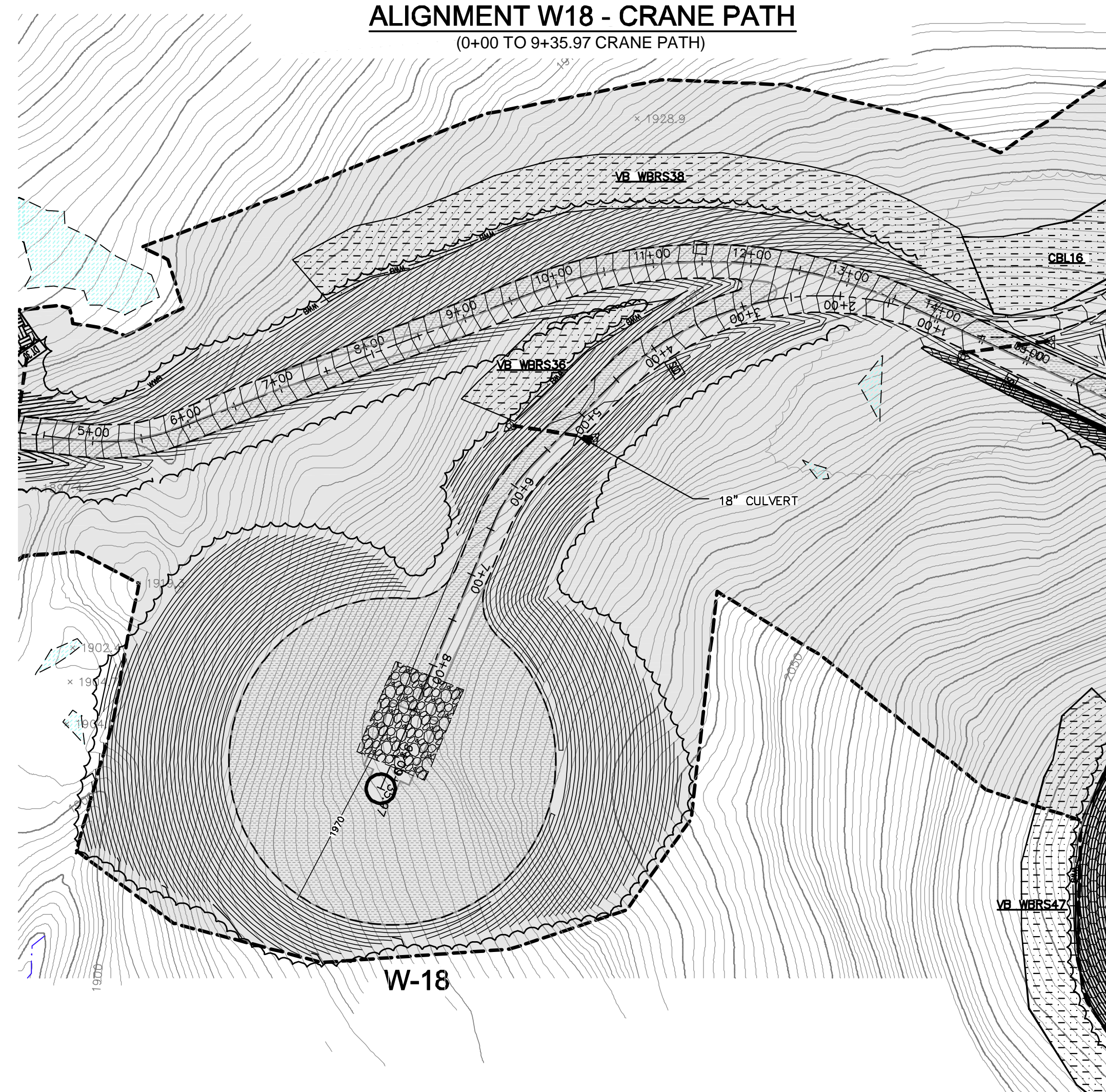
JAMES W. SEWALL COMPANY / Since 1880  
800.686.4402  
SEWALL.COM

NOT FOR CONSTRUCTION

**ALIGNMENT W19 - CRANE PATH**  
(30+00 TO 52+23.45 CRANE PATH)



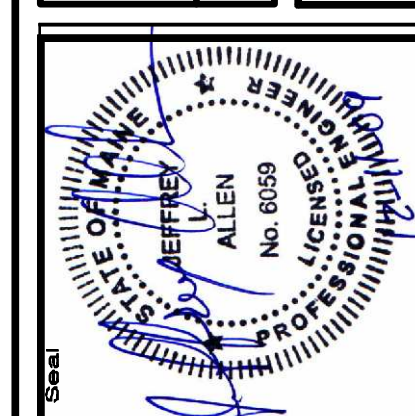
**ALIGNMENT W18 - CRANE PATH**  
(0+00 TO 9+35.97 CRANE PATH)



Rev. #	Drawn By	Description	Date

Designed By	JCA
Date	12/11/2009
Scale	1"=100'
Approved	JCA
Checked	JCA

**HIGHLAND WIND PROJECT**  
**HIGHLAND WIND LLC**  
Project Location  
HIGHLAND PLANTATION  
Drawing Description  
ALIGNMENT W-18, 19, SEDIMENTATION & EROSION CONTROL PLANS



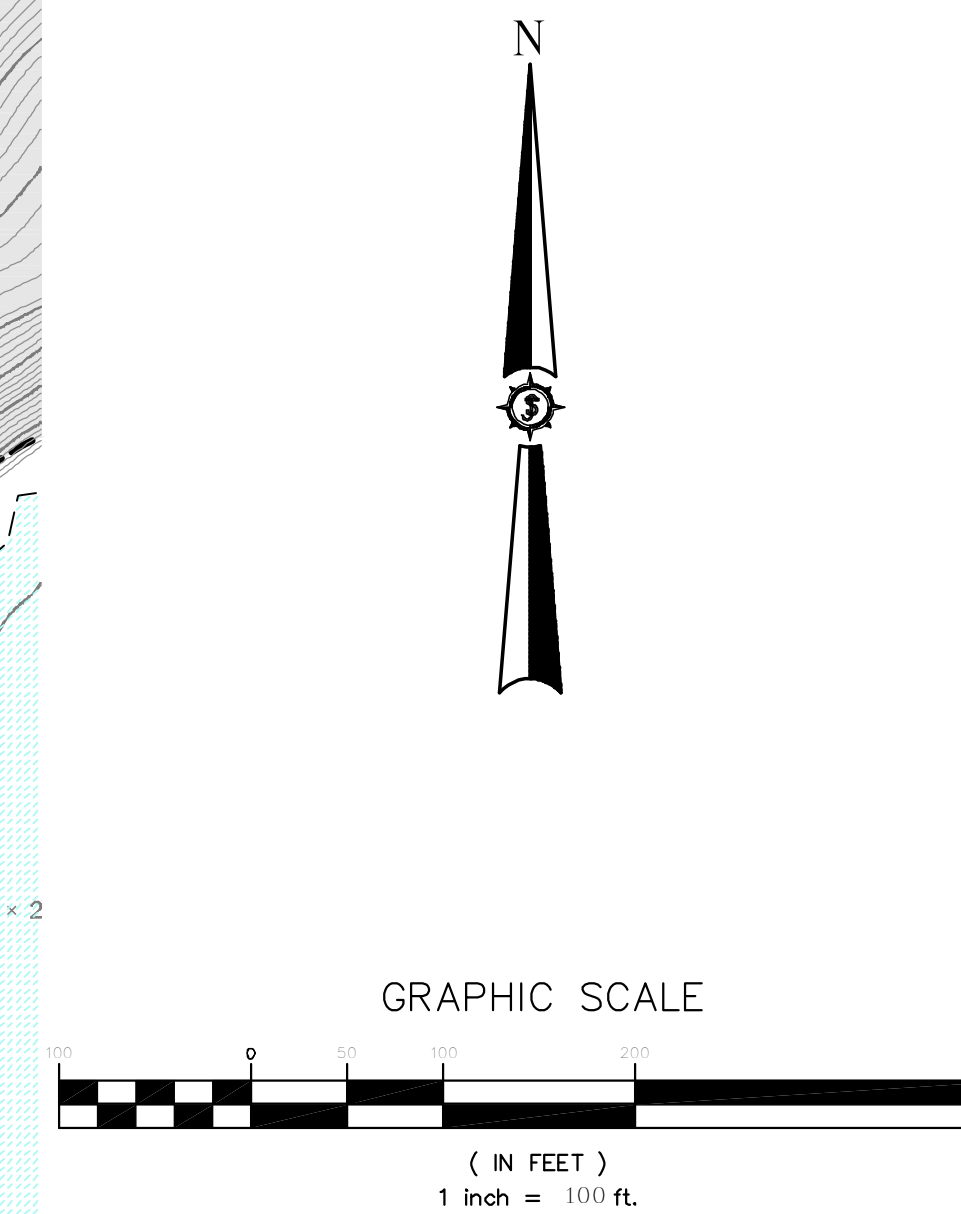
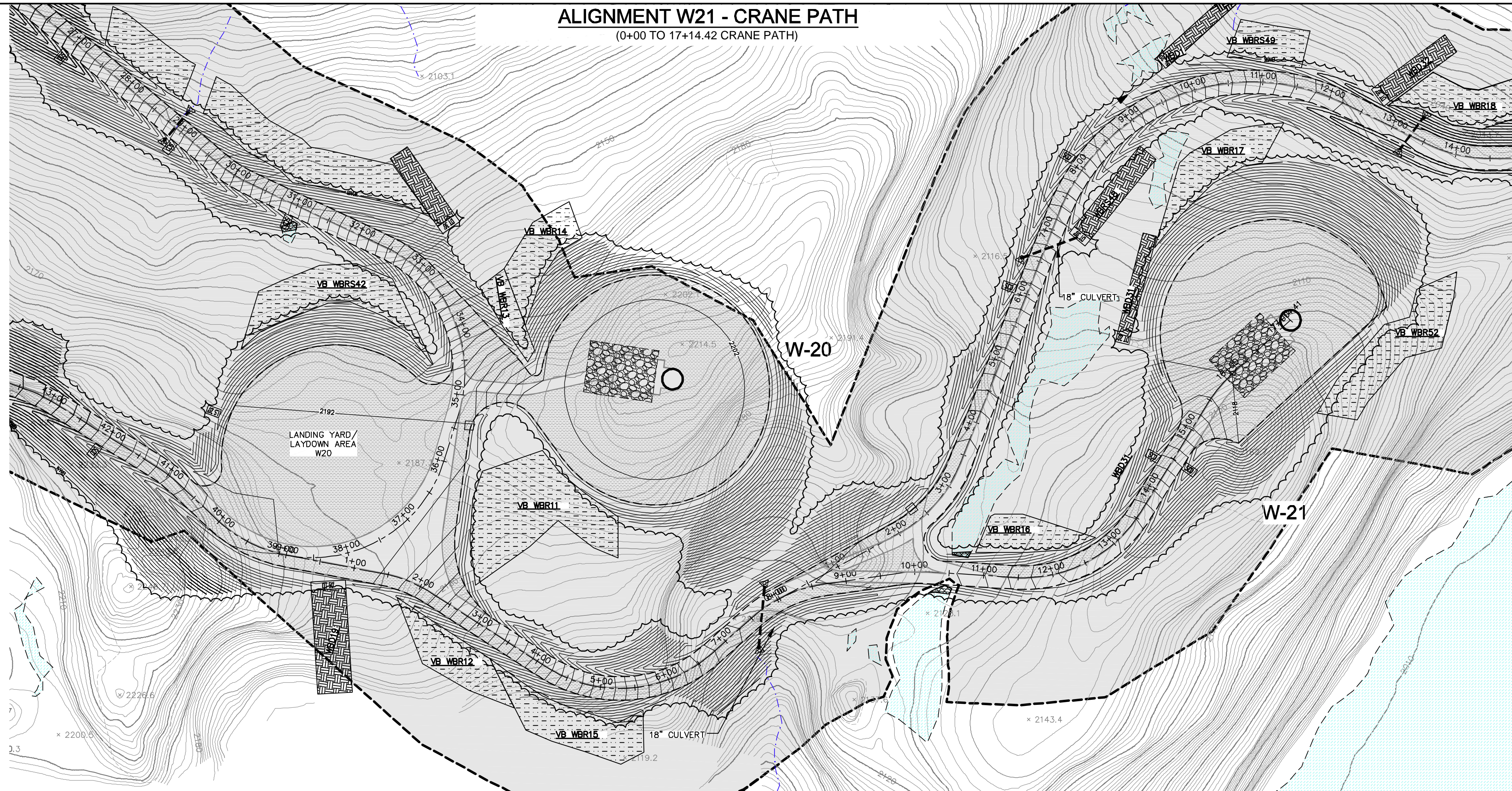
Project No. **66060E**  
Engineer  
**SEWALL**  
AN INTEGRATED TEAM OF  
GEOSPATIAL ENGINEERING,  
SURVEYING AND NATURAL  
RESOURCE CONSULTANTS  
JAMES W. SEWALL COMPANY / Since 1880  
800.686.7402  
SEWALL.COM

Phase  
**PERMIT**

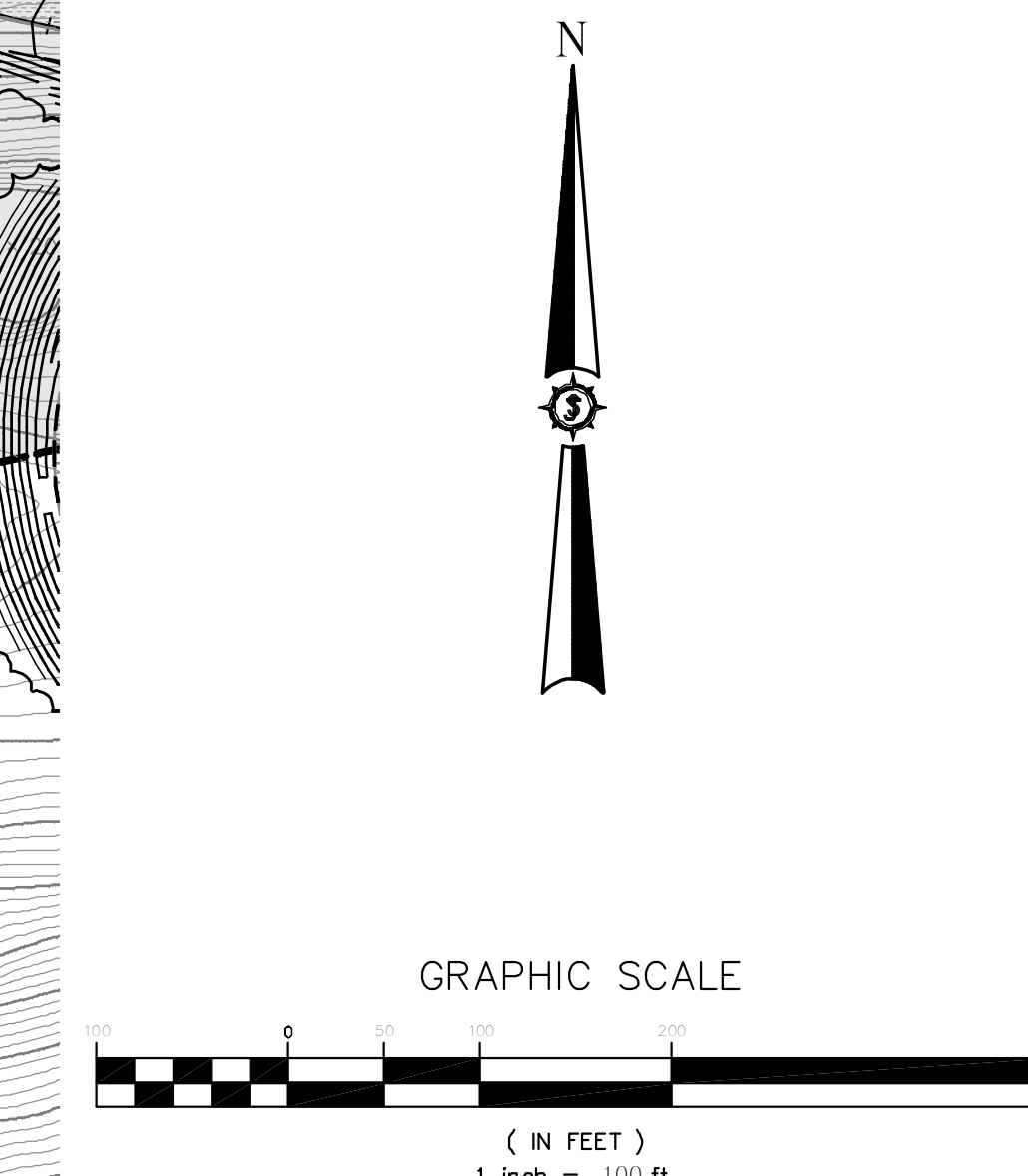
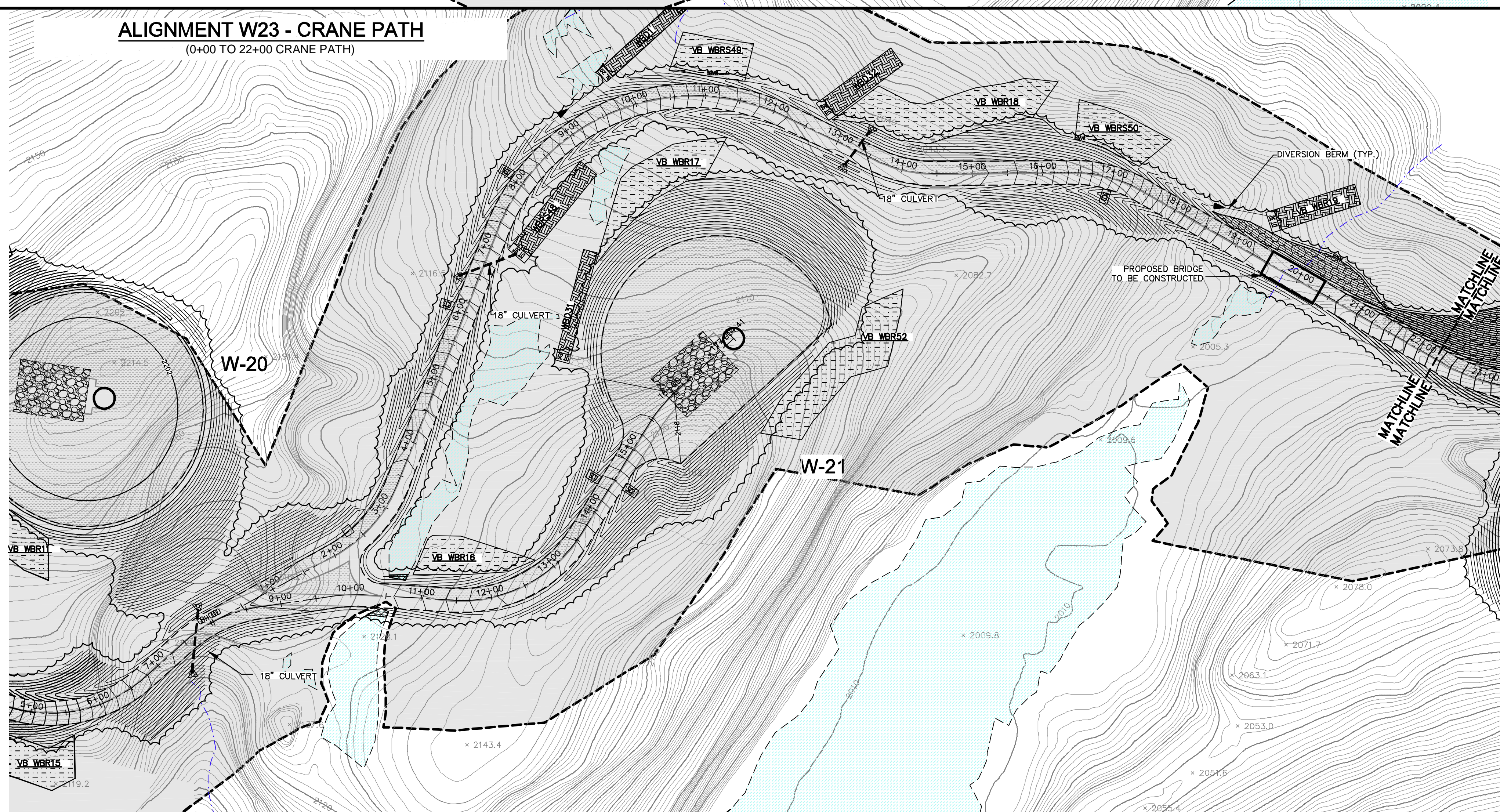
Sheet No.  
**C-507**

**NOT FOR CONSTRUCTION**

**ALIGNMENT W21 - CRANE PATH**  
(0+00 TO 17+14.42 CRANE PATH)

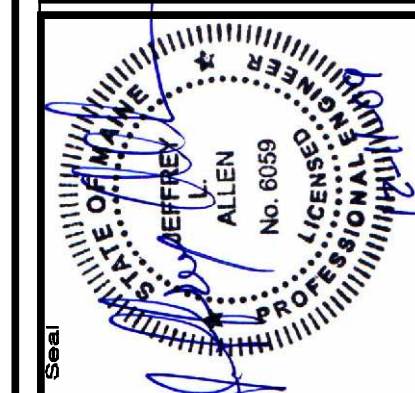


**ALIGNMENT W23 - CRANE PATH**  
(0+00 TO 22+00 CRANE PATH)



Rev. #	Drawn By	Description	Date

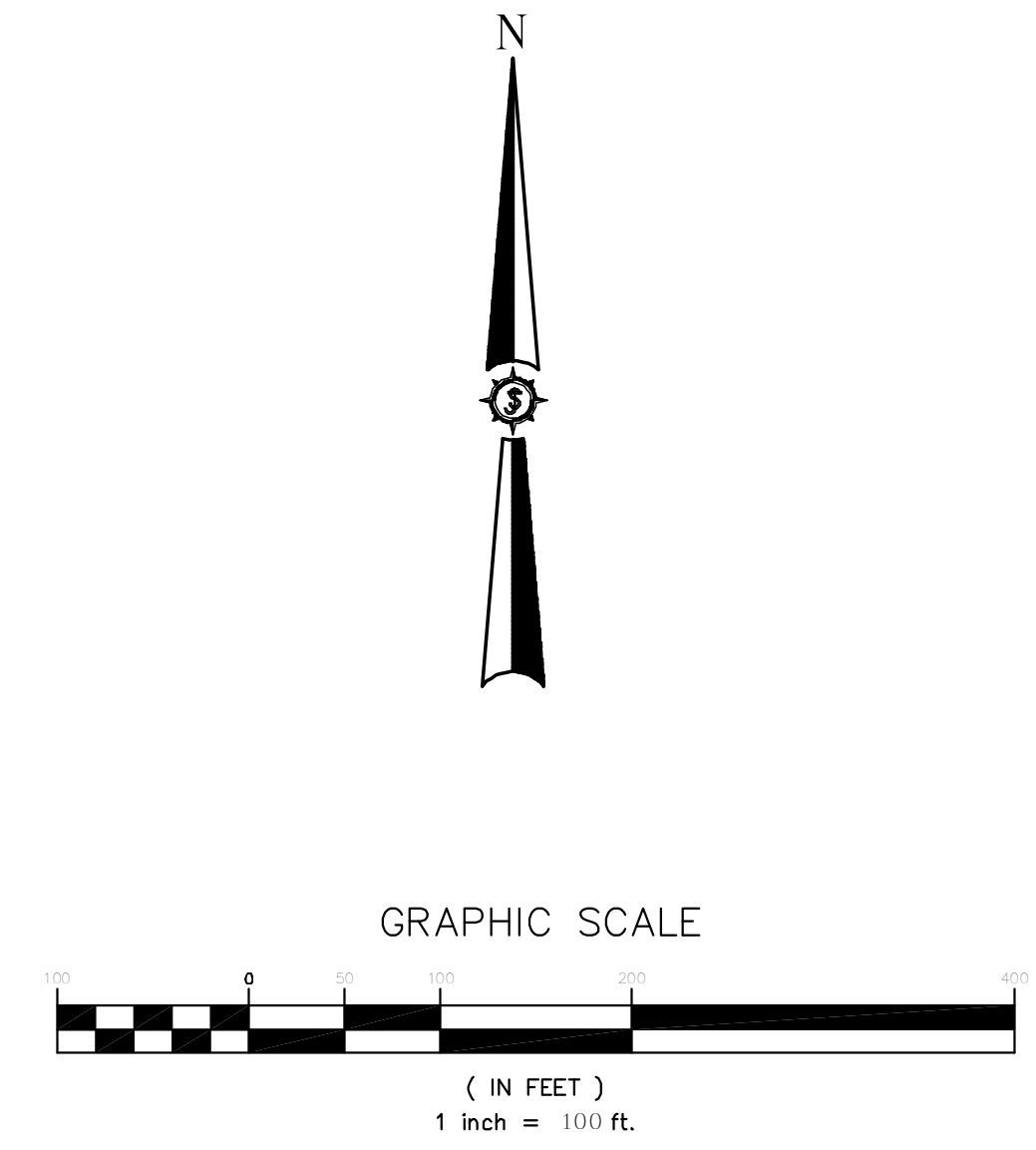
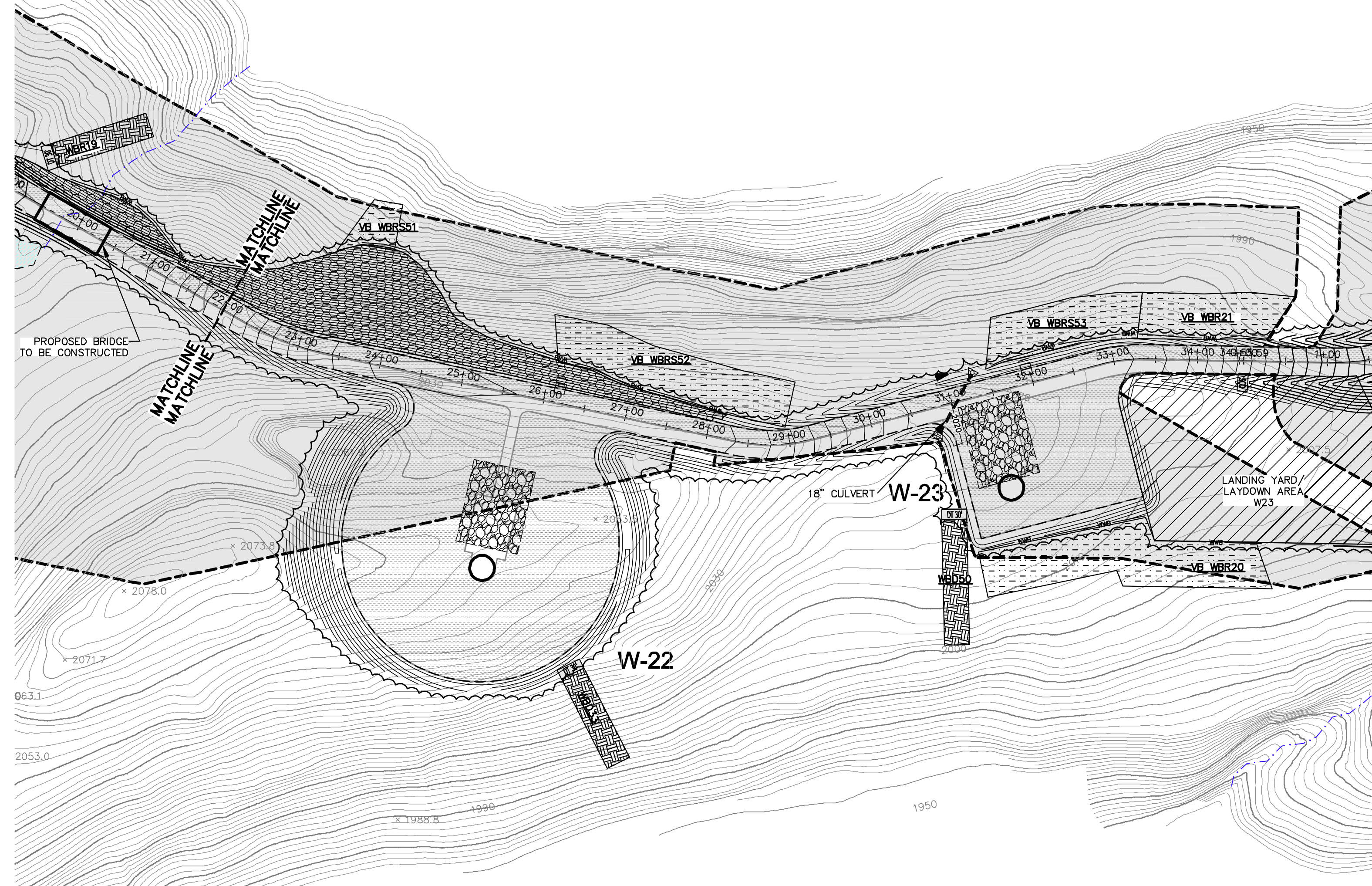
<b>HIGHLAND WIND PROJECT</b> <b>HIGHLAND WIND LLC</b>	Designed By JLA	Drawn By JC
	Date 12/11/2009	Scale 1"=100'
Project Location HIGHLAND PLANTATION	Checked JLA	Approved JLA
Drawing Description <b>ALIGNMENT W-21, 23 SEDIMENTATION &amp; EROSION CONTROL PLANS</b>		



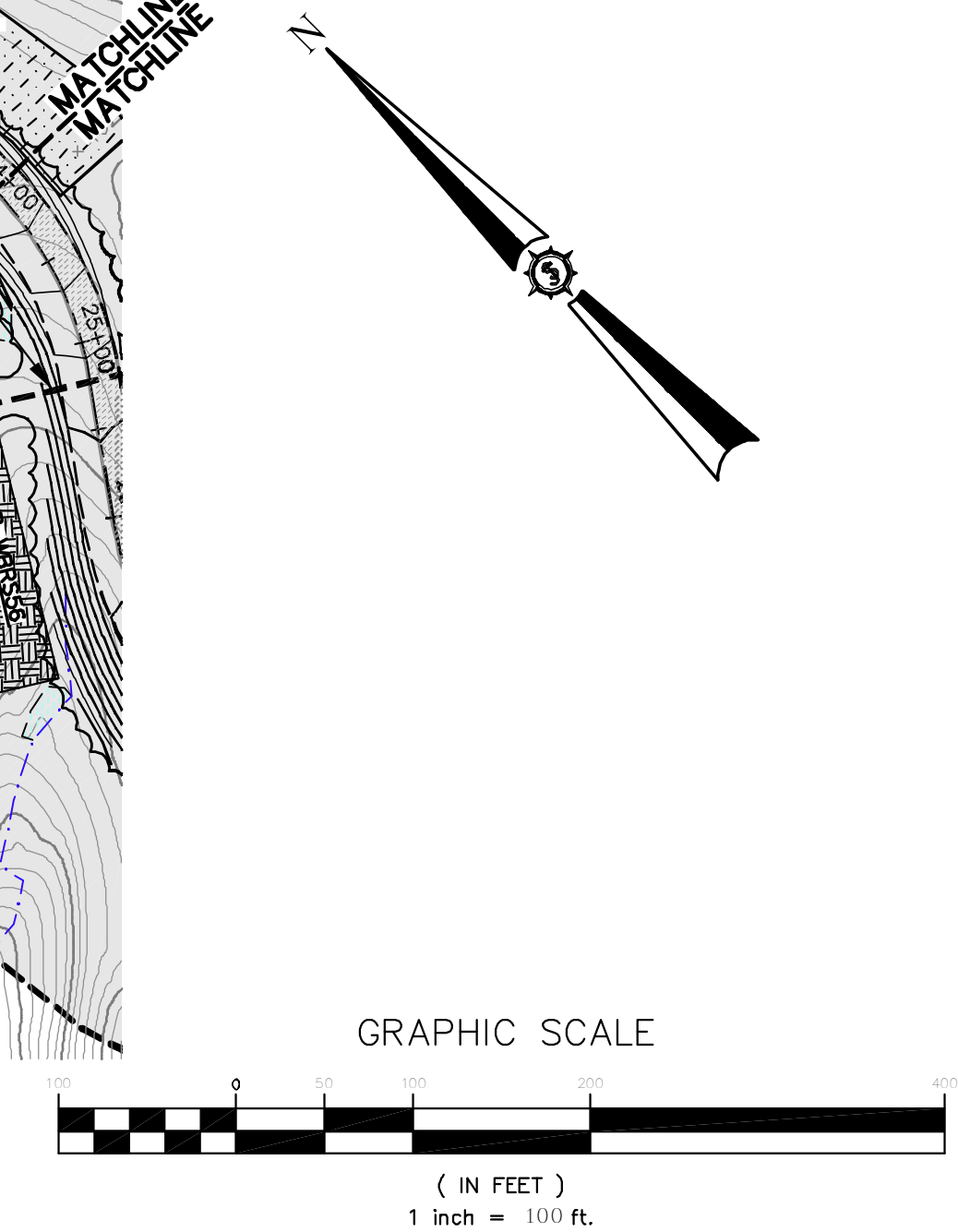
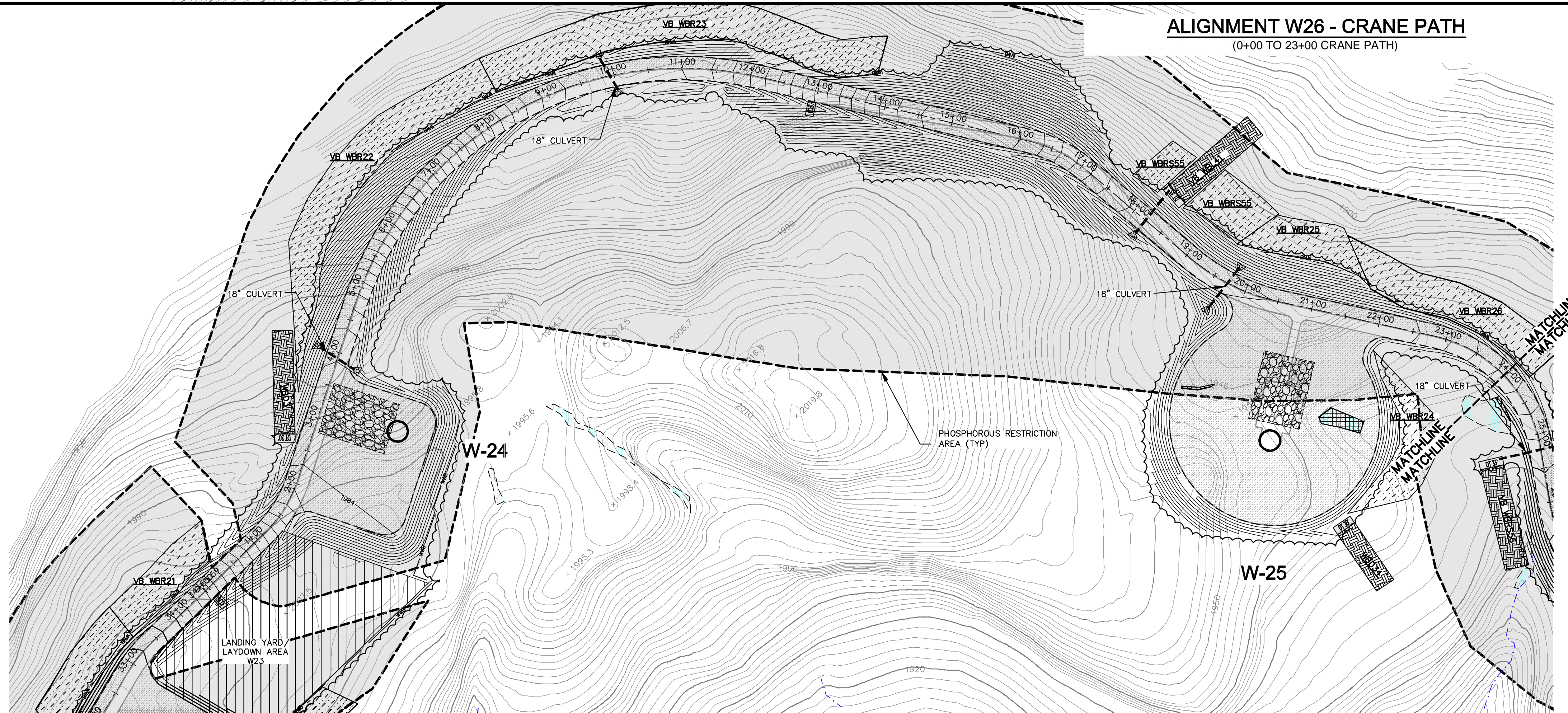
**66060E**  
**SEWALL**  
 AN INTEGRATED TEAM OF  
 GEOSPATIAL ENGINEERING,  
 SURVEYING AND NATURAL  
 RESOURCE CONSULTANTS  
 JAMES W. SEWALL COMPANY / Since 1880  
 800.676.7402  
 SEWALL.COM

NOT FOR CONSTRUCTION

**ALIGNMENT W23 - CRANE PATH**  
(22+00 TO 34+55.59 CRANE PATH)



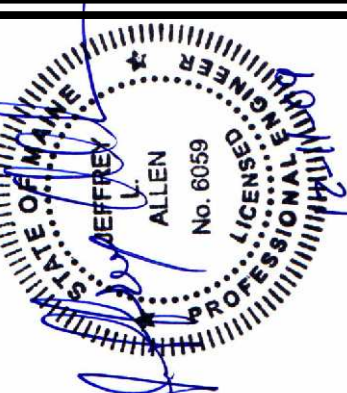
**ALIGNMENT W26 - CRANE PATH**  
(0+00 TO 23+00 CRANE PATH)



Rev. #	Drawn By	Description	Date

Designed By	JLA	Drawn By	JC
Date	12/11/2009	Scale	1"=100'
Approved	JLA	Checked	JC

**HIGHLAND WIND PROJECT**  
**HIGHLAND WIND LLC**  
Project Location  
HIGHLAND PLANTATION  
Drawing Description  
**ALIGNMENT W-23, 26 SEDIMENTATION & EROSION CONTROL PLANS**

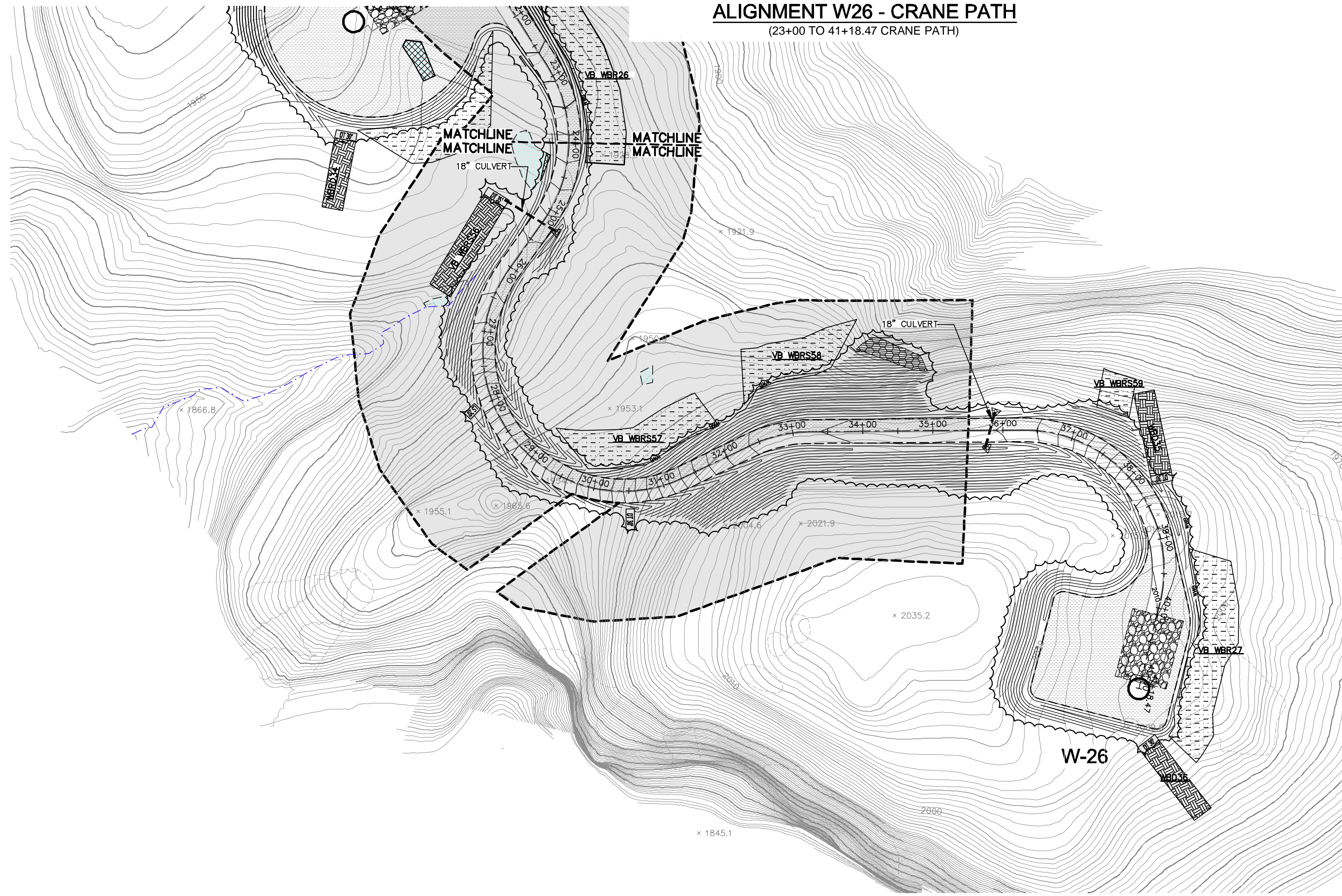


66060E  
**SEWALL**  
AN INTEGRATED TEAM OF  
GEOSPATIAL ENGINEERING,  
SURVEYING AND NATURAL  
RESOURCE CONSULTANTS  
JAMES W. SEWALL COMPANY / Since 1880  
800.676.7402  
SEWALL.COM

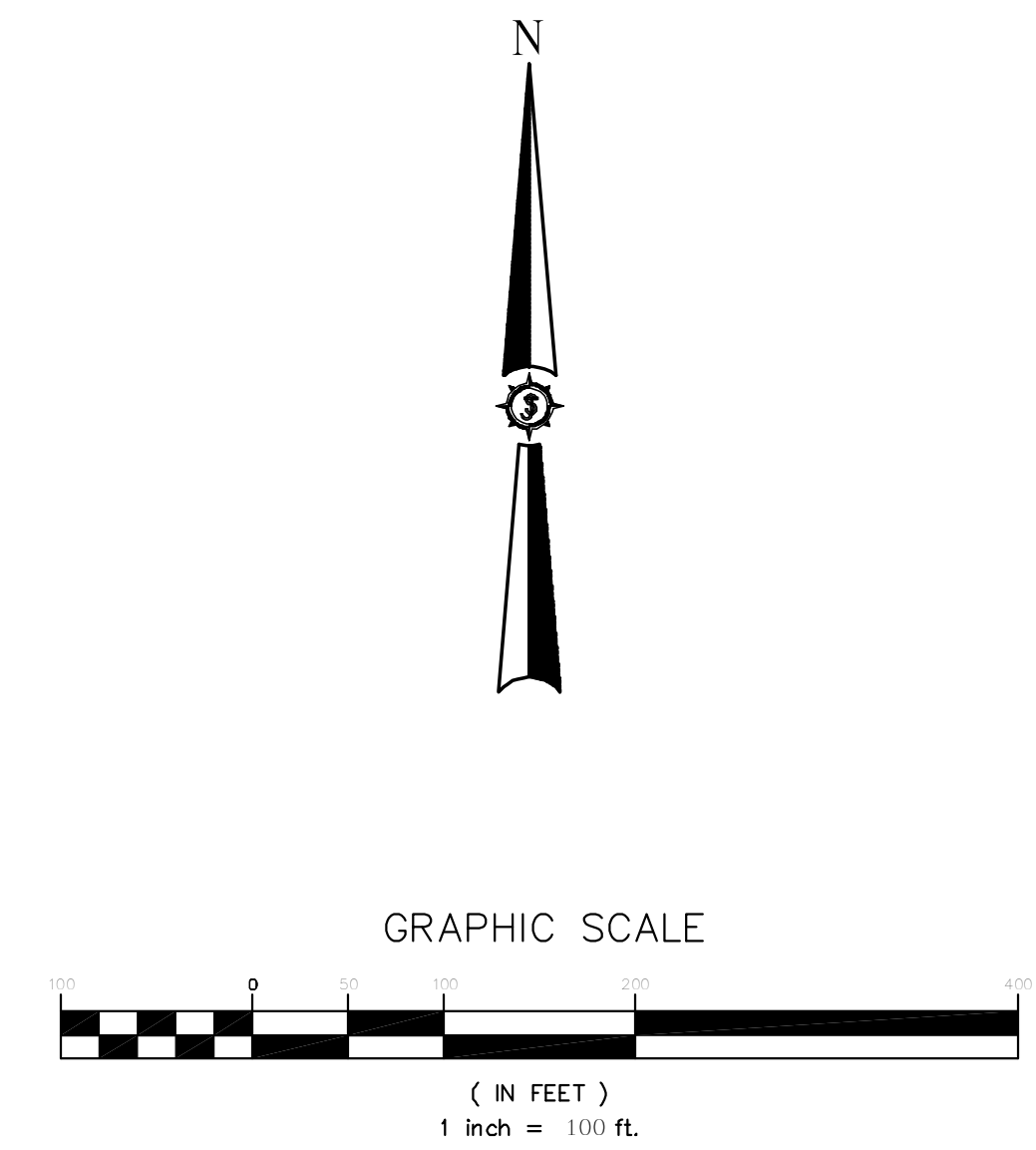
Phase  
**PERMIT**

Sheet No.  
**C-509**

**NOT FOR CONSTRUCTION**

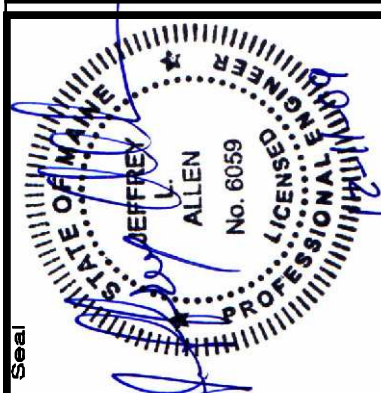


**ALIGNMENT W-26 - CRANE PATH**  
(23+00 TO 41+18.47 CRANE PATH)



Rev. #	Drawn By	Description	Date

<b>HIGHLAND WIND PROJECT</b> <b>HIGHLAND WIND LLC</b>	Designed By	JLA	Drawn By	JC
	Date	12/11/2009	Scale	1"=100'
Project Location HIGHLAND PLANTATION	Approved	JLA	Checked	JC
	Drawing Description	ALIGNMENT W-26 SEDIMENTATION & EROSION CONTROL PLANS		



**66060E**  
**SEWALL**  
 AN INTEGRATED TEAM OF  
 GEOSPATIAL ENGINEERING,  
 SURVEYING AND NATURAL  
 RESOURCE CONSULTANTS  
 JAMES W. SEWALL COMPANY / Since 1880  
 800 678 7402  
 SEWALL.COM

Phase  
**PERMIT**  
 Sheet No.  
**C-510**

NOT FOR  
 CONSTRUCTION