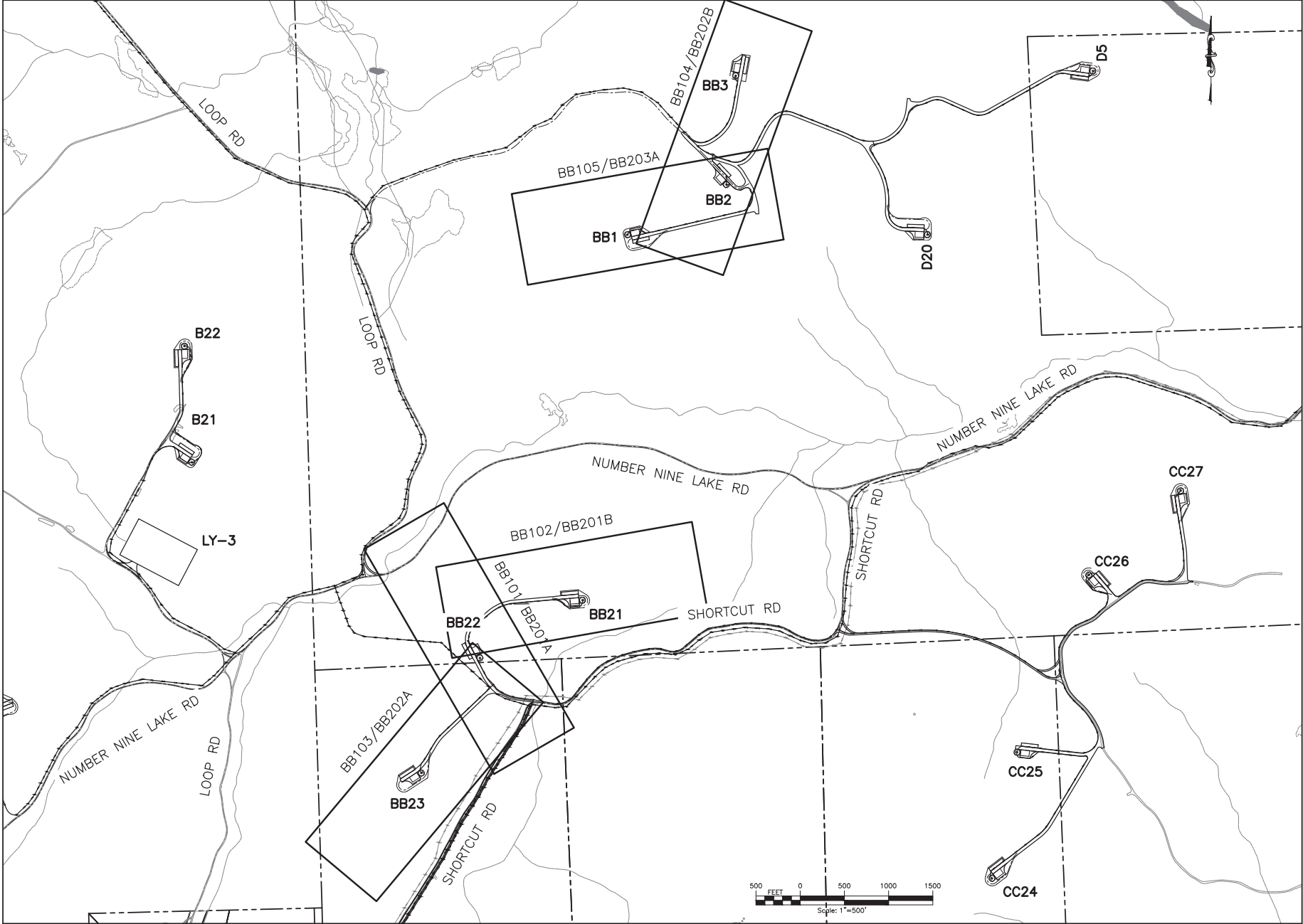


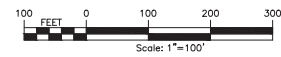
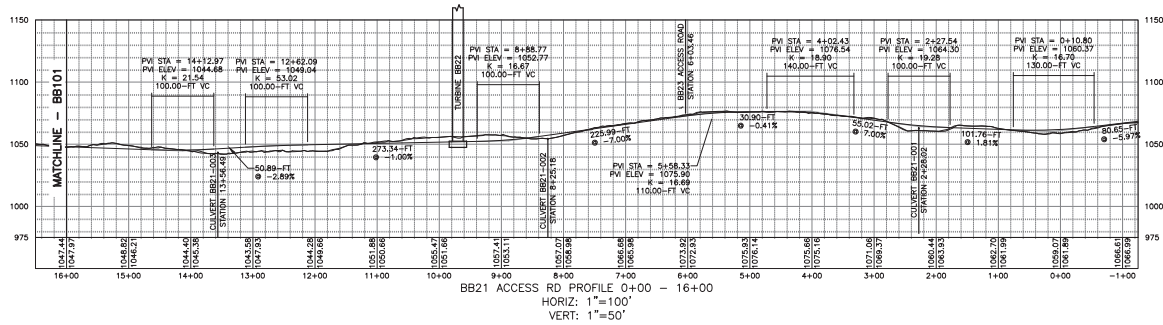
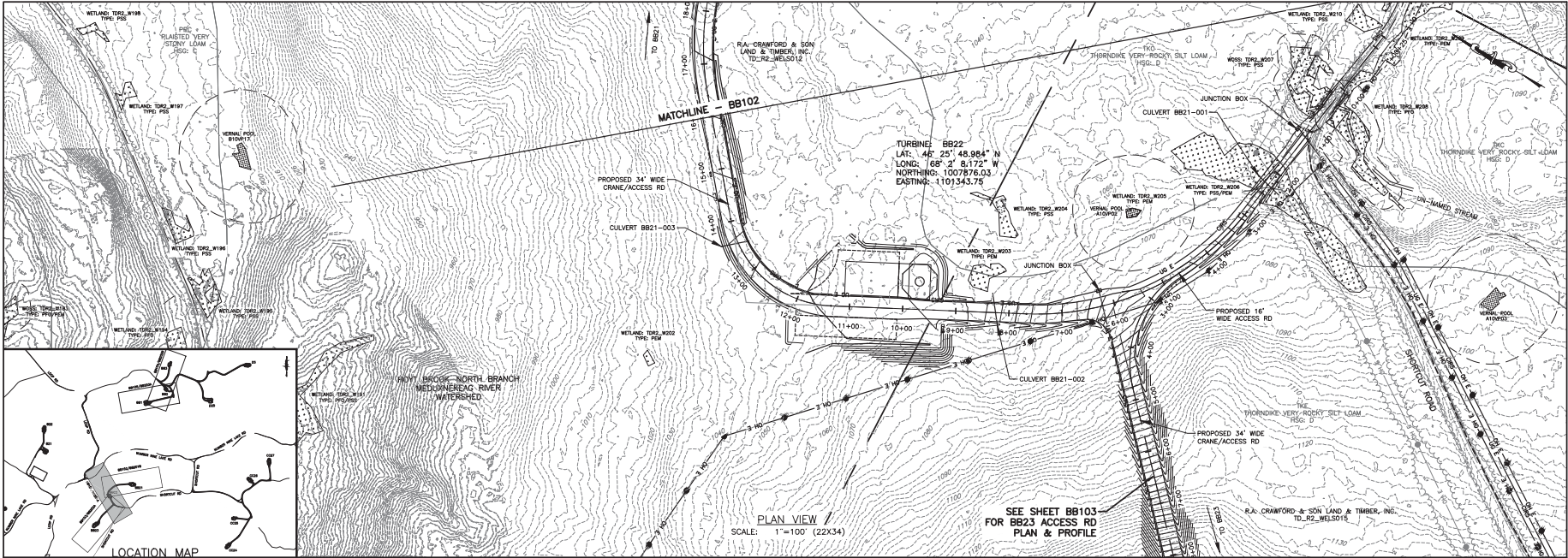
FILE NAME: I:\Projects\140009\Num_Nine_Wind_Arind_Form_LSA_Veg\DWG\CUT\140009_BB100_Index.dwg
 DATE: 7/20/15 8:58:39 AM
 USER: Steven Martini



PROJECT: NUMBER NINE WIND FARM ARDSTOCK COUNTY, MAINE PRELIMINARY PLANS NOT FOR CONSTRUCTION		DRAWING NO. BB100		SHEET 59 OF 338	
TITLE OF DRAWING: BB-SHEETS INDEX PLAN		PROJECT MANAGER: S. MELLOTT		SHEET DATE: JULY 2015	
EXAMINER: DP/BA		SCALE: AS SHOWN		REVISIONS: 1. 11/11/14 2. 12/11/14 3. 01/08/15 4. 02/02/15 5. 02/02/15 6. 07/01/15 7. 07/01/15	
CONTRACTOR: 140009		ARCHITECT: S. MELLOTT		DESCRIPTION: DATE: BY:	



FILE NAME: I:\Projects\140009\Num_Nine_Wind_Main_LSA.dwg (AutoCAD) 140009_BB101-BB105_Sheets.dwg
 DATE: 7/20/15 10:03:54 AM
 USER: Steven J. Martel



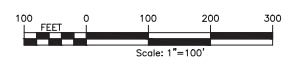
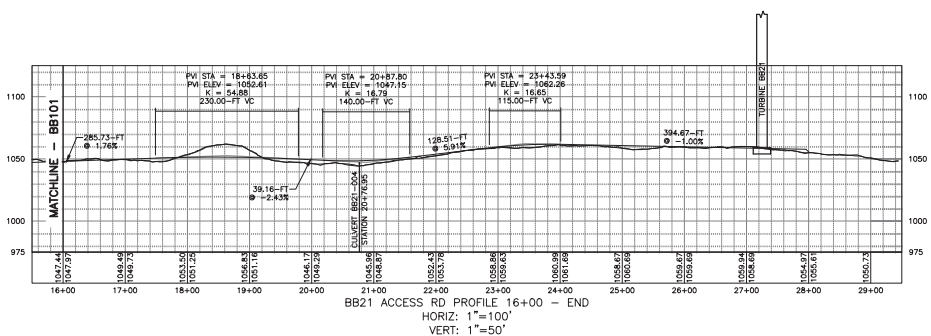
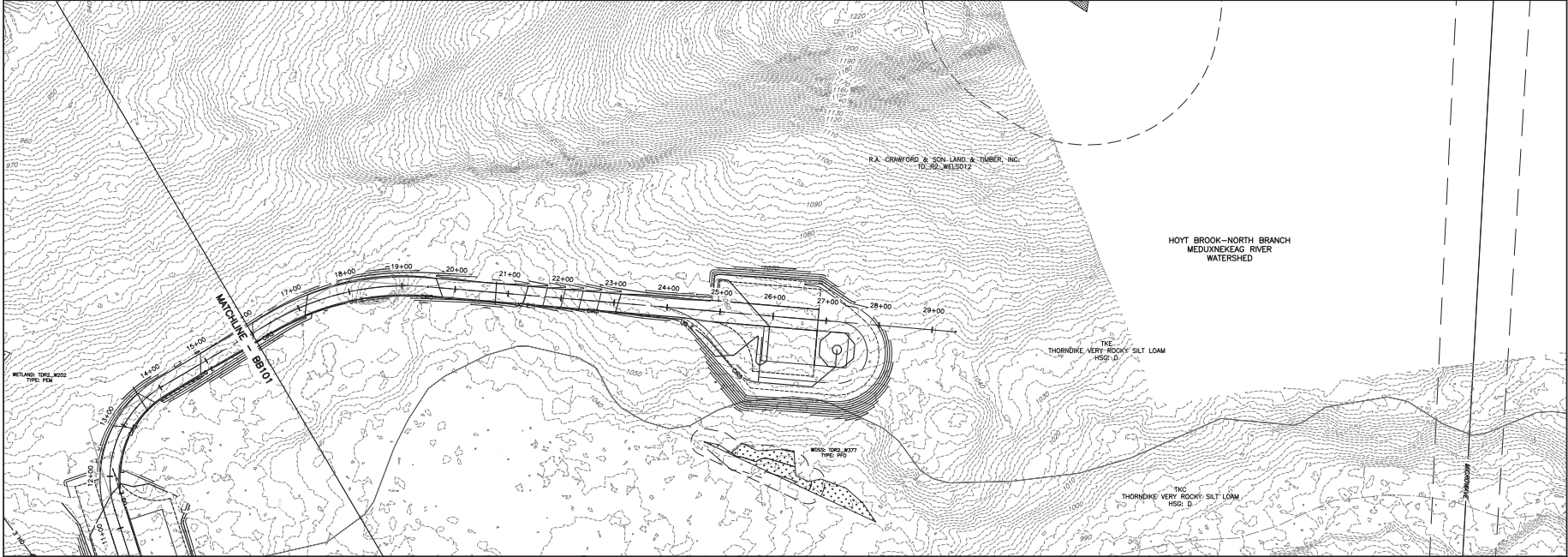
7	APPROVED BY	DATE	BY
6	PROJECT MANAGER		
5	DRAWN BY		
4	CHECKED BY		
3	DESIGNED BY		
2	SCALE		
1	REV		
	DESCRIPTION		
	DATE		
	BY		

PROJECT NO.	140009
PROJECT NAME	NUMBER NINE WIND FARM
CLIENT	NUMBER NINE WIND FARM
DATE	JULY 2015
SCALE	AS SHOWN
DESIGNED BY	S. MELLOTT
CHECKED BY	DP/BA
DRAWN BY	AS SHOWN
DATE	JULY 2015

PROJECT	NUMBER NINE WIND FARM
LOCATION	ARCOSTOOK COUNTY, MAINE
STATUS	PRELIMINARY PLANS NOT FOR CONSTRUCTION
TITLE OF DRAWING	WTG BB21 AND WTG BB22 ACCESS ROAD PLAN SHEET
DRAWING NO.	BB101
SHEET NO.	60 OF 338



FILE NAME: I:\Projects\140009\Num_Nine_Mfd_Form_LSA\Drawn\140009_BB101-10009_BB101-BB102_Sheets.dwg
 DATE PLOTTED: 7/20/15 11:47 AM
 USER: Steven J. Martel



REV	DESCRIPTION	DATE	BY
7			
6			
5			
4			
3			
2			
1			

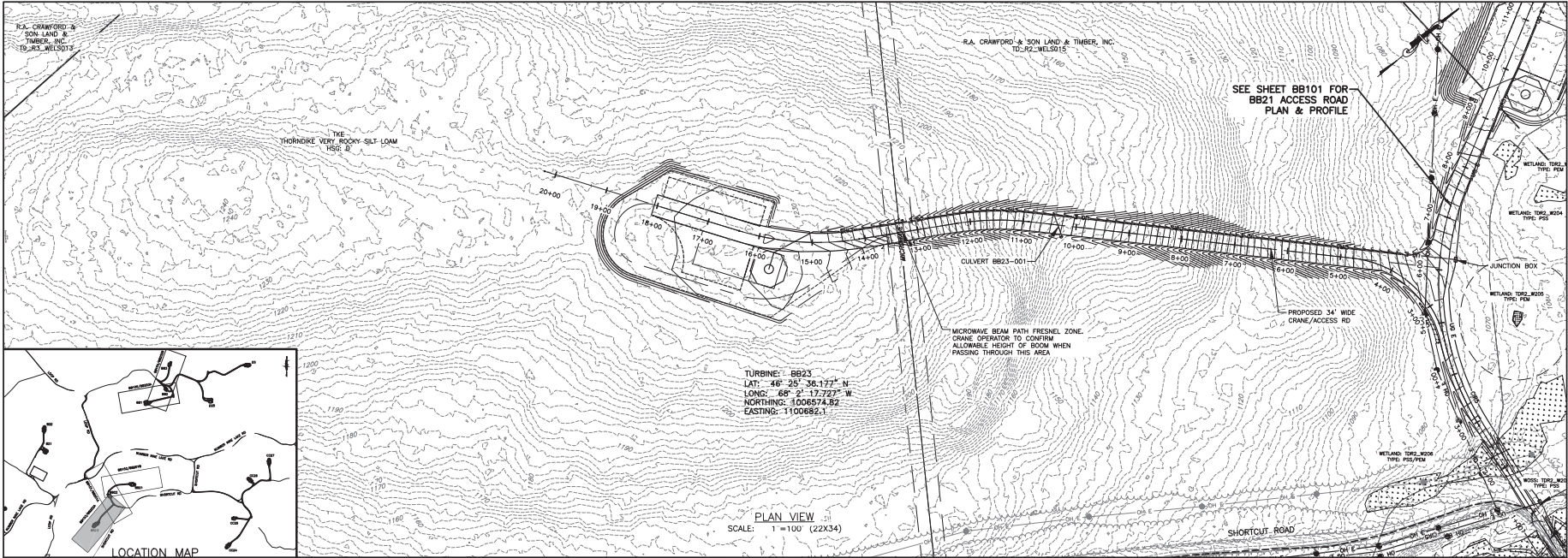
PROJECT NO. 140009
 SUBJECT: NUMBER NINE WIND FARM
 PRELIMINARY PLANS NOT FOR CONSTRUCTION
 DRAWING NO. BB102
 SHEET 61 OF 338

DESIGNED BY: S. MELLOTT
 CHECKED BY: J. MELLOTT
 DATE: JULY 2015

PROJECT: NUMBER NINE WIND FARM
 AROOSTOOK COUNTY, MAINE
 PRELIMINARY PLANS NOT FOR CONSTRUCTION
 DRAWING NO. BB102
 SHEET 61 OF 338

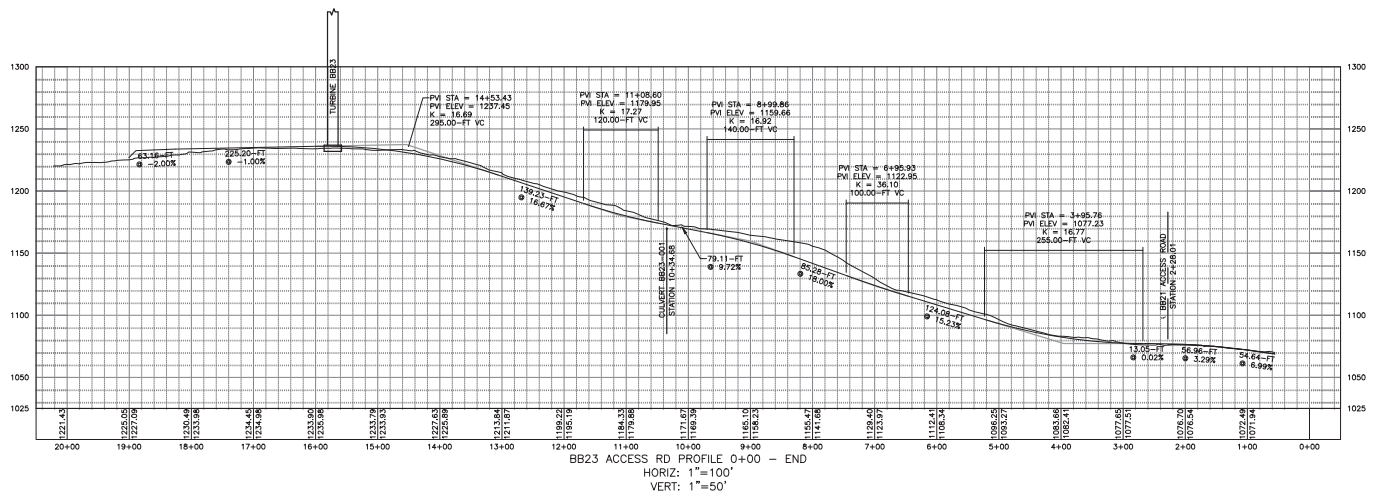
DRAWING NO. BB102
 SHEET 61 OF 338

FILE NAME: I:\Projects\140009-Num_Nine_Wind_Main_LSA_Veg(CAD)\140009_BB101-BB105_Sheets.dwg
 USER: S. Mellott
 DATE: 10/26/2010 10:41

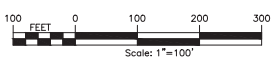


TURBINE: BB23
 LAT: 46° 26' 36.177" N
 LONGS: 68° 2' 17.723" W
 NORTHING: 3006574.82
 EASTING: 1100682.1

PLAN VIEW
 SCALE: 1"=100' (22X34)



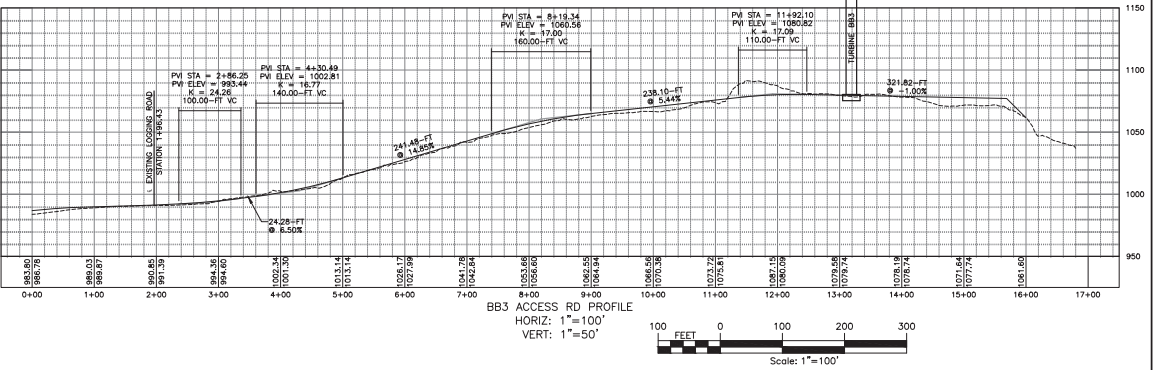
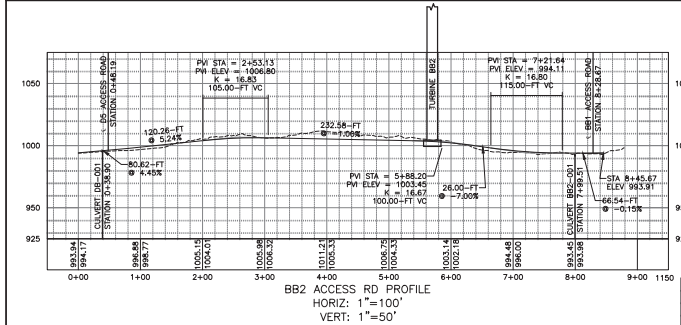
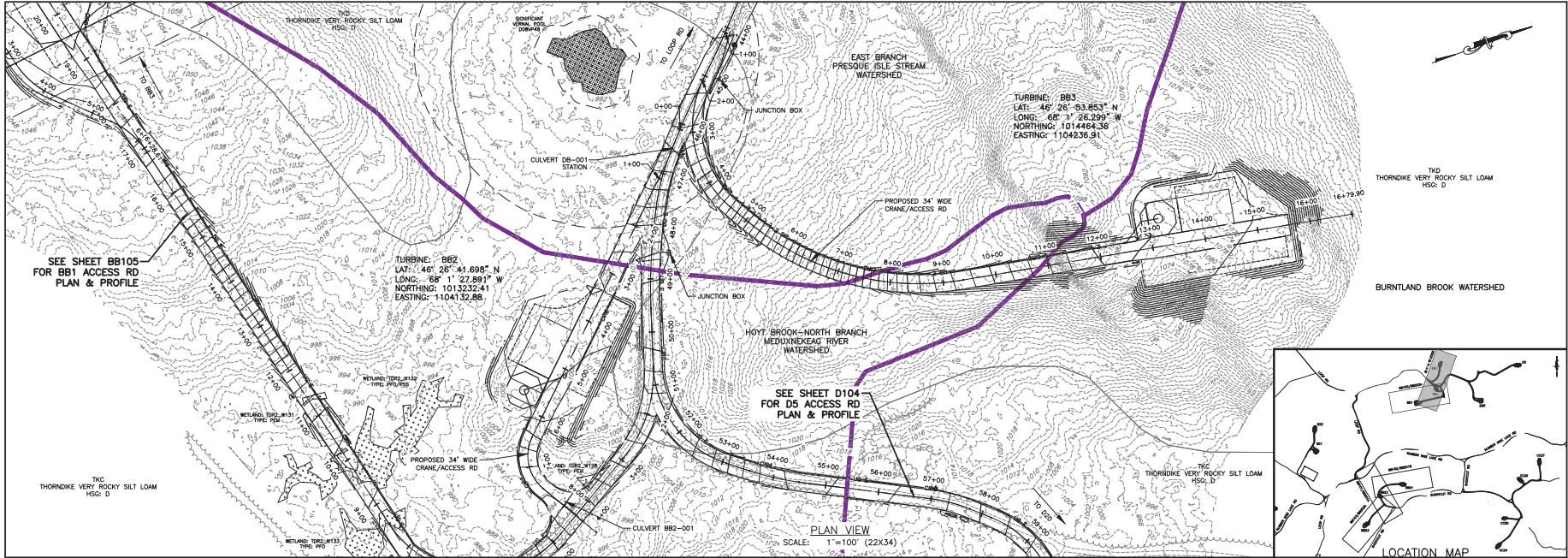
BB23 ACCESS RD PROFILE 0+00 - END
 HORIZ: 1"=100'
 VERT: 1"=50'



PROJECT: NUMBER NINE WIND FARM AROOSTOOK COUNTY, MAINE PRELIMINARY PLANS NOT FOR CONSTRUCTION		DRAWING NO: BB103		SHEET 62 OF 338	
TITLE OF DRAWING: WTG BB23 ACCESS ROAD PLAN SHEET		NUMBER NINE WIND FARM		PROJECT MANAGER: S. MELLOTT	
DESIGNER: DPBA		CHECKED BY: AS SHOWN		DATE: JULY 2015	
REVISIONS:		APPROVED BY:		DATE:	
7	6	5	4	3	2
1	2	3	4	5	6
REV	DESCRIPTION	DATE	BY		



FILE NAME: I:\Projects\140009\Num_Nine_Wind_Form_LSA_V04\CAD\CUT\140009_BB101-BB105_Sheets.dwg
 DATE: 8/11/12 AM
 USER: Steven Mardit



PROJECT	NUMBER NINE WIND FARM	APCOOSTOOK COUNTY, MAINE	PRELIMINARY PLANS NOT FOR CONSTRUCTION
DRAWING NO.	BB104		
TITLE OF DRAWING	VTG BB2 AND VTG BB3 ACCESS ROAD PLAN SHEET		
DESIGNER	FISHER ENGINEERS		
PROJECT MANAGER	S. MELLOTT		
DRAWN BY	DPBA		
CHECKED BY	AS SHOWN		
DATE	JULY 2015		
REV	DESCRIPTION	DATE	BY
7			
6			
5			
4			
3			
2			
1			

R.A. CRAWFORD & SON LAND & TIMBER, INC.
TO_R2_WELSD12

EAST BRANCH
PRESQUE ISLE STREAM
WATERSHED

TKD
THORNDIKE VERY ROCKY SILT LOAM
HSG: D

TURBINE: BB1
LAT: 46° 26' 36.170" N
LONG: 68° 11' 43.937" W
NORTHING: 1012665.76
EASTING: 1103012.65

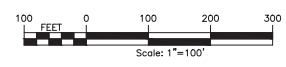
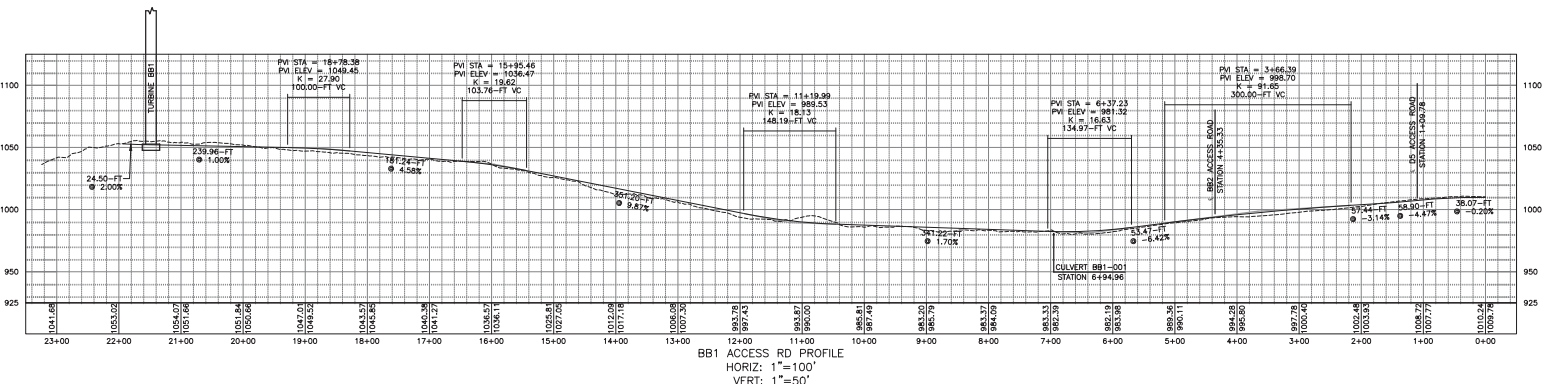
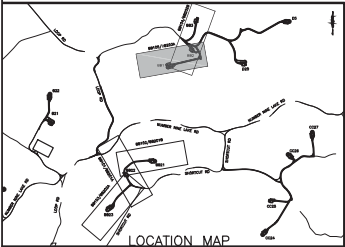
MICROWAVE BEAM PATH FRESNEL ZONE.
CRANE OPERATOR TO CONFIRM
ALLOWABLE HEIGHT OF BOOM WHEN
PASSING THROUGH THIS AREA

SEE SHEET BB104
FOR BB2 ACCESS RD
PLAN & PROFILE

TURBINE: BB2
LAT: 46° 26' 41.698" N
LONG: 68° 11' 27.891" W
NORTHING: 1013222.41
EASTING: 1104132.88

PLAN VIEW
SCALE: 1"=100' (22X34)

HOYT BROOK-NORTH BRANCH
MEDUXNECAD RIVER
WATERSHED



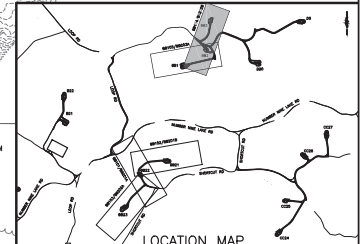
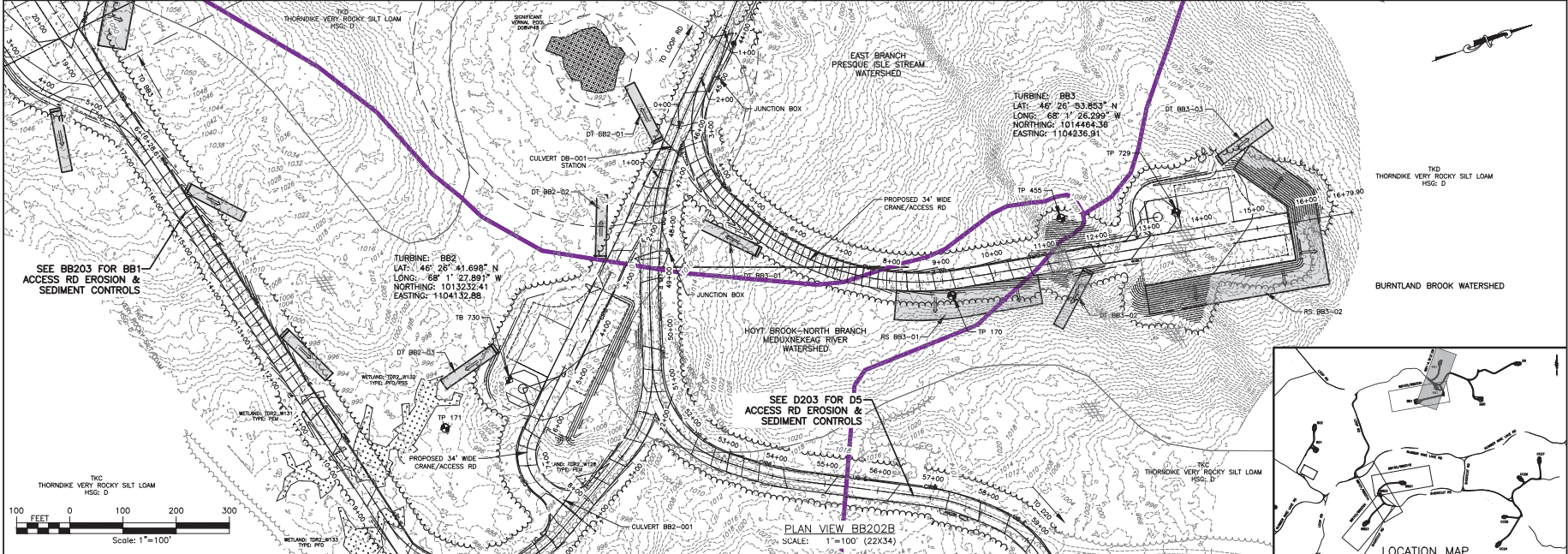
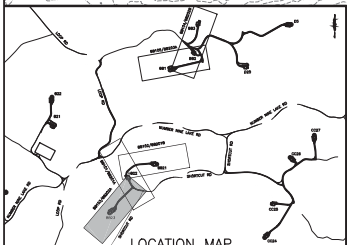
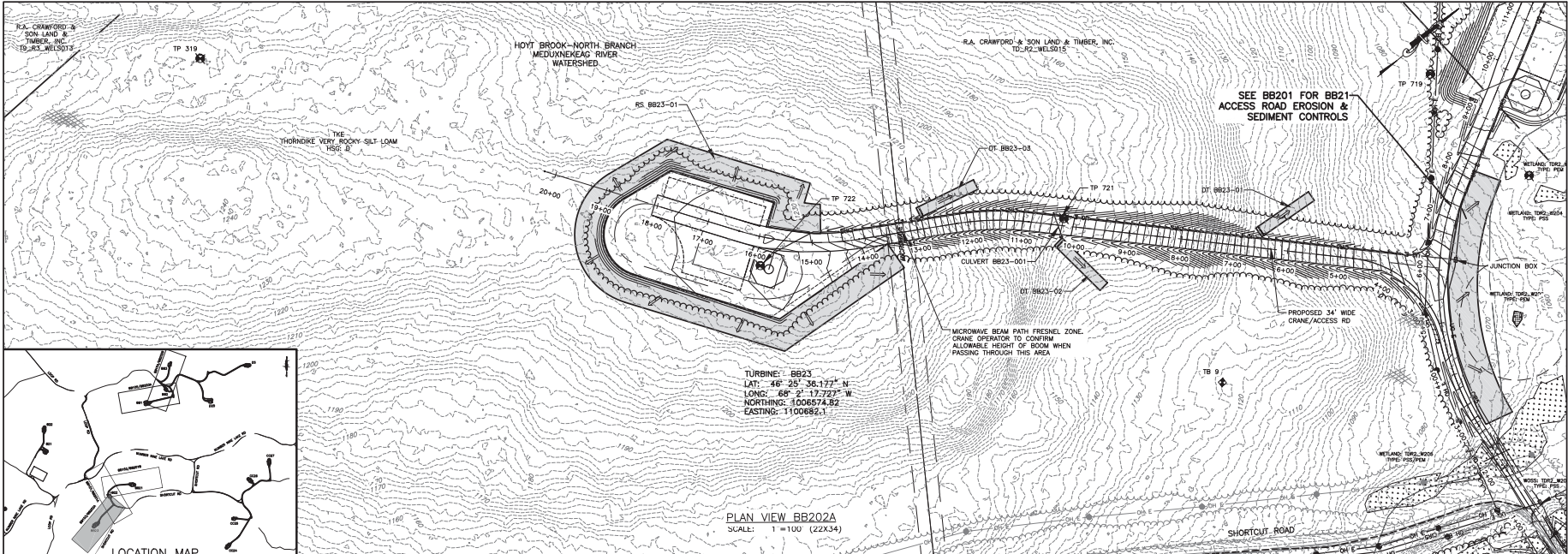
NO.	REV	DESCRIPTION	DATE	BY
1				
2				
3				
4				
5				
6				
7				

PROJECT NO.	140009
PROJECT MANAGER	S. MELLOTT
DRAWN BY	DPBA
CHECKED BY	AS SHOWN
DATE	JULY 2015

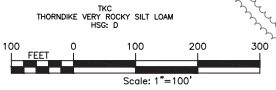
PROJECT	NUMBER NINE WIND FARM
LOCATION	ARCOOCH COUNTY, MAINE
STATUS	PRELIMINARY PLANS NOT FOR CONSTRUCTION
TITLE OF DRAWING	WTG BB1 ACCESS ROAD PLAN SHEET

DRAWING NO.	BB105
SHEET	64 OF 338

FILE NAME: I:\Projects\140009-Num_Nine_Wind_Farm_LSA_Vlog\CAD\CAD\140009_BB101-BB105_Sheets.dwg
DATE PLOTTED: 7/15/15 8:12:22 AM
USER: Steven M. Marti



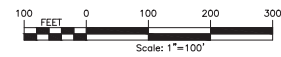
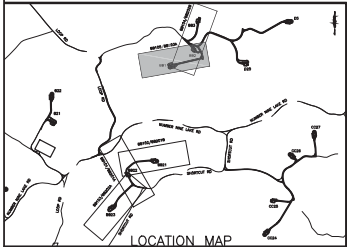
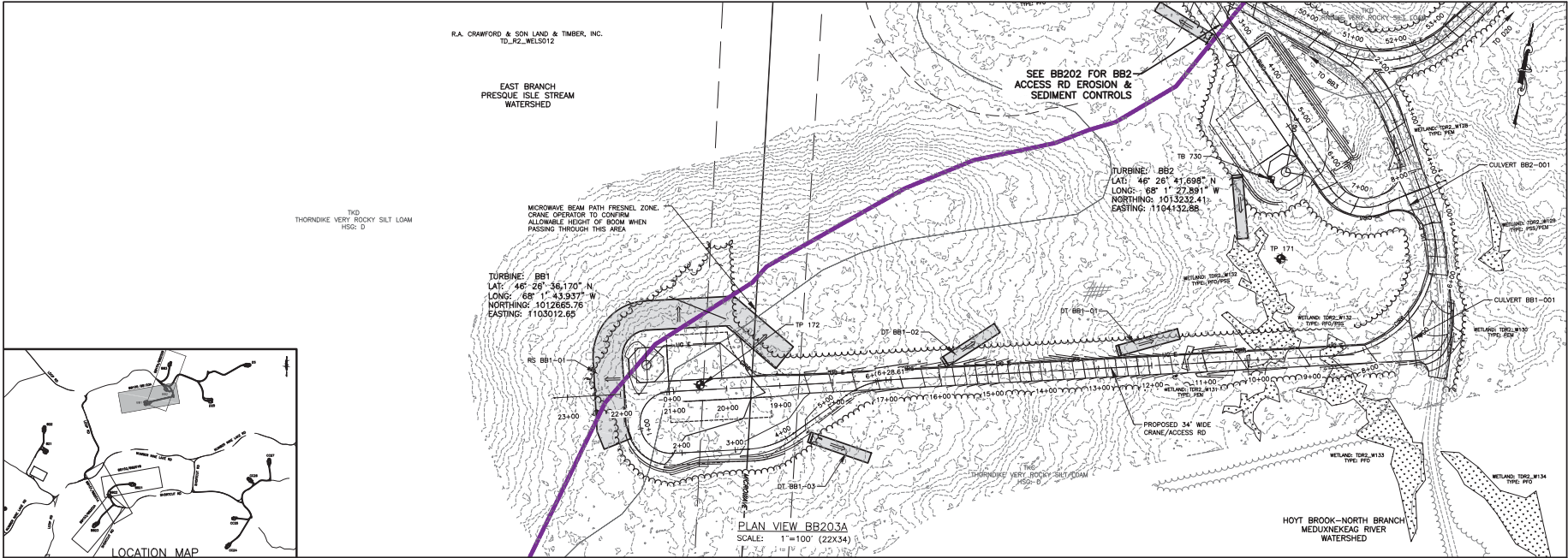
FILE NAME: I:\Projects\140009-Num_Nine_Area_LGA_Verm_LGA_Verm_LGA_Verm_LGA_Verm_BB201-BB203_Sheets.dwg
DATE: 7/15/15 AM
USER: Steven Maroti



PROJECT: NUMBER NINE WIND FARM APOOSTOOK COUNTY, MAINE PRELIMINARY PLANS NOT FOR CONSTRUCTION	DRAWING NO: BB202	SHEET 66 OF 338	TITLE OF DRAWING: WTG BB2, WTG BB3 AND WTG BB23 EROSION AND SEDIMENT CONTROL PLAN	PROJECT MANAGER: S. MELLOTT	DATE: JULY 2015
				CHECKED BY: DPBA	REVISIONS:
				DESIGNED BY: AS SHOWN	REV:
				DRAWN BY: AS SHOWN	DATE:



FILE NAME: I:\Projects\140009-Num_Nine_Main_Arind_Form_LSA_V09(CAD)\140009_BB201-86203_Sheets.dwg
 DATE PLOTTED: 7/16/15, AM
 USER: Steven M. Martini



PROJECT: NUMBER NINE WIND FARM ARDOSTOCK COUNTY, MAINE PRELIMINARY PLANS NOT FOR CONSTRUCTION		 FISHER ASSOCIATES 100 Central Street, Suite 200 Portland, ME 04101 www.fisherassoc.com	DRAWING NO. BB203 SHEET 67 OF 338
TITLE OF DRAWING: WTG BB1 EROSION AND SEDIMENT CONTROL PLAN			
PROJECT MANAGER: S. MELLOTT	DATE: JULY 2015	REVISIONS: 1. REV. DATE: 7/16/15 AS SHOWN	DESCRIPTION DATE BY
EXAMINER: DPBA	REV.		
SCALE: AS SHOWN	1.		
DESIGNER: DPBA	2.		
CHECKED BY: S. MELLOTT	3.		
APPROVED BY: S. MELLOTT	4.		
PROJECT NO.: 140009	5.		
SHEET NO.: 67	6.		
TOTAL SHEETS: 338	7.		