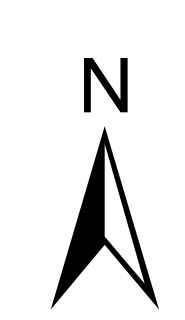
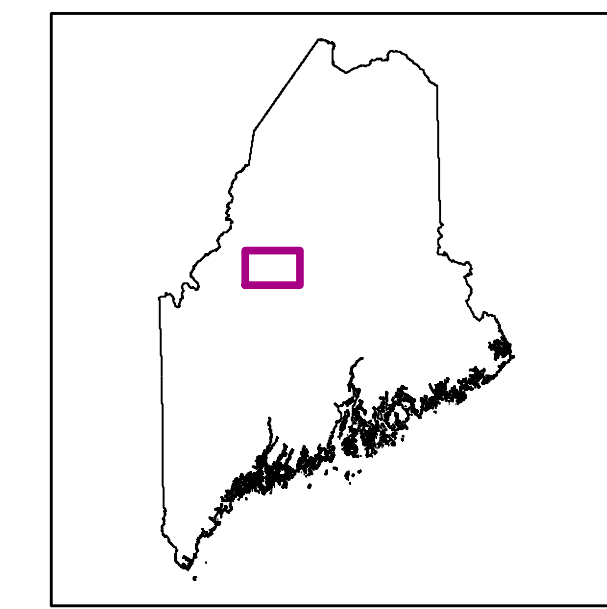


Moosehead Regional Planning

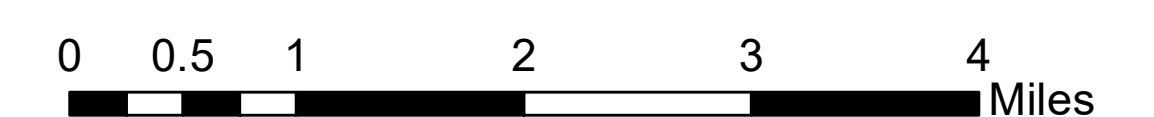
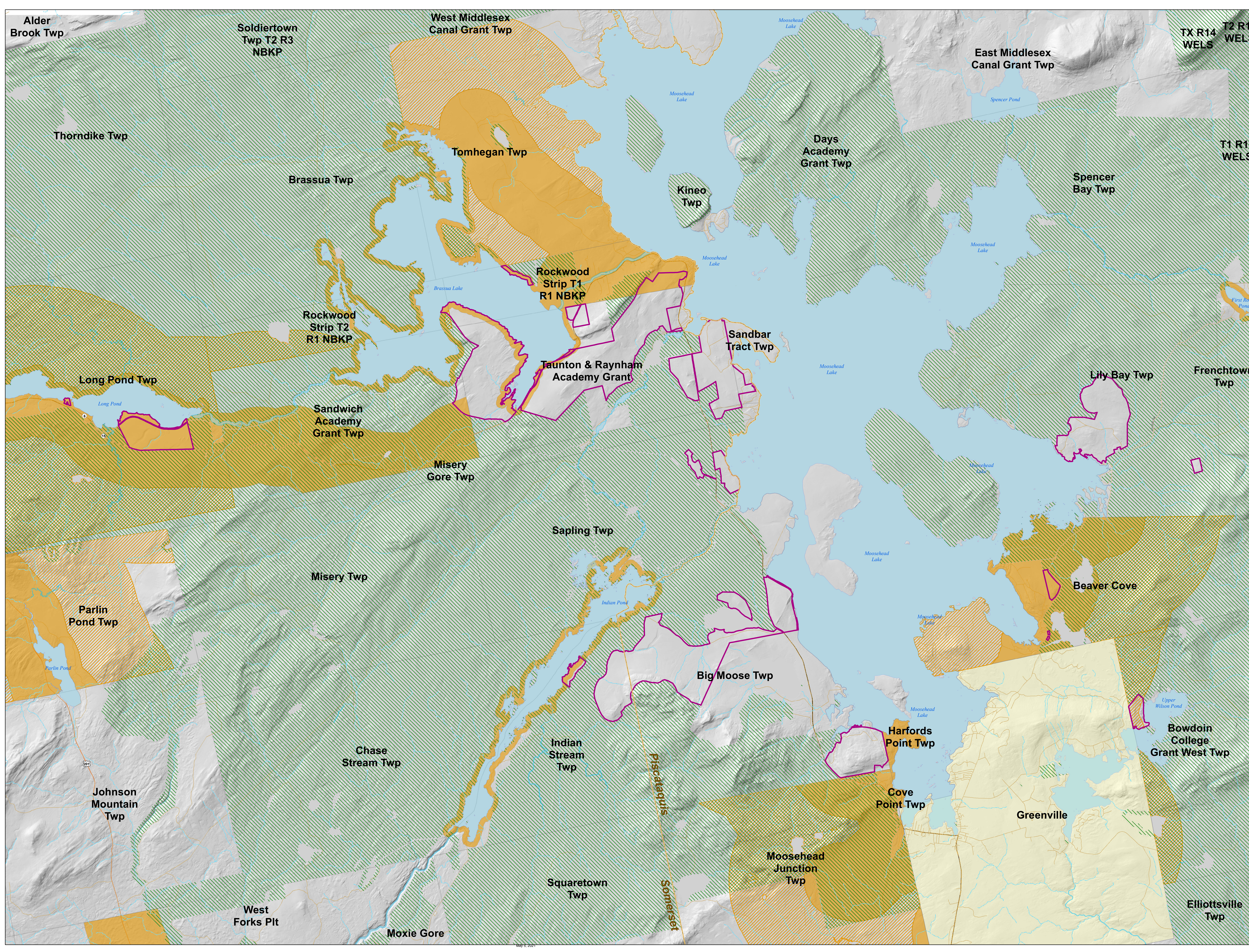


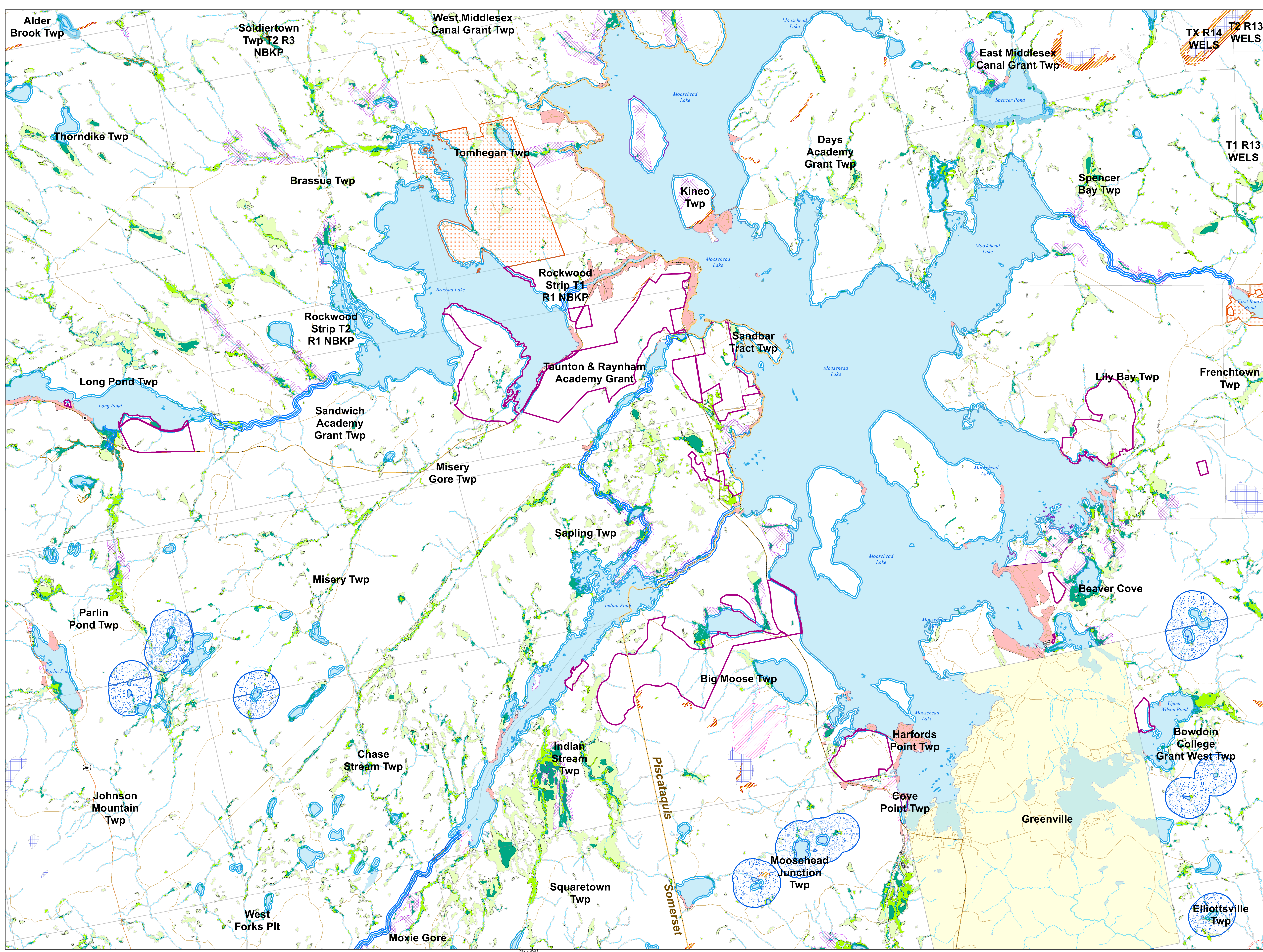
Scenario 2 Location of Development



Removal of Lily Bay Twp., Big Moose Twp., Sapling Twp., Misery Gore Twp., Misery Twp., and Taunton & Raynham Academy Grant from primary and secondary locations.

- Former Development Areas
- County Lines
- LUPC Service
- Organized Town
- Waterbody
- Conserved Lands
- U.S. Routes
- State Routes
- E911 Roads
- Primary Location
- Secondary Location





Moosehead Regional Planning

Scenario 2 Zoning



- Former Development Areas
- County Lines
- LUPC Service
- Organized Town
- Waterbody
- U.S. Routes
- State Routes
- E911 Roads
- D-CI: Commercial Industrial
- D-GN: General
- D-RF: Recreation Facility
- D-RS: Residential
- M-GN: General
- P-AL: Accessible
- P-FP: Flood Prone
- P-FW: Fish and Wildlife
- P-GP: Great Pond
- P-MA: Mountain
- P-RP: Resource Plan
- P-RR200: Recreation - 200'
- P-RR: Recreation
- P-SG: Soils and Geology
- P-SL1: Shoreland - 250'
- P-UA: Unusual
- P-SL2: Shoreland - 75'
- P-WL1: Wetlands of Special Significance
- P-WL2: Scrub-shrub Wetlands
- P-WL3: Forested Wetlands

