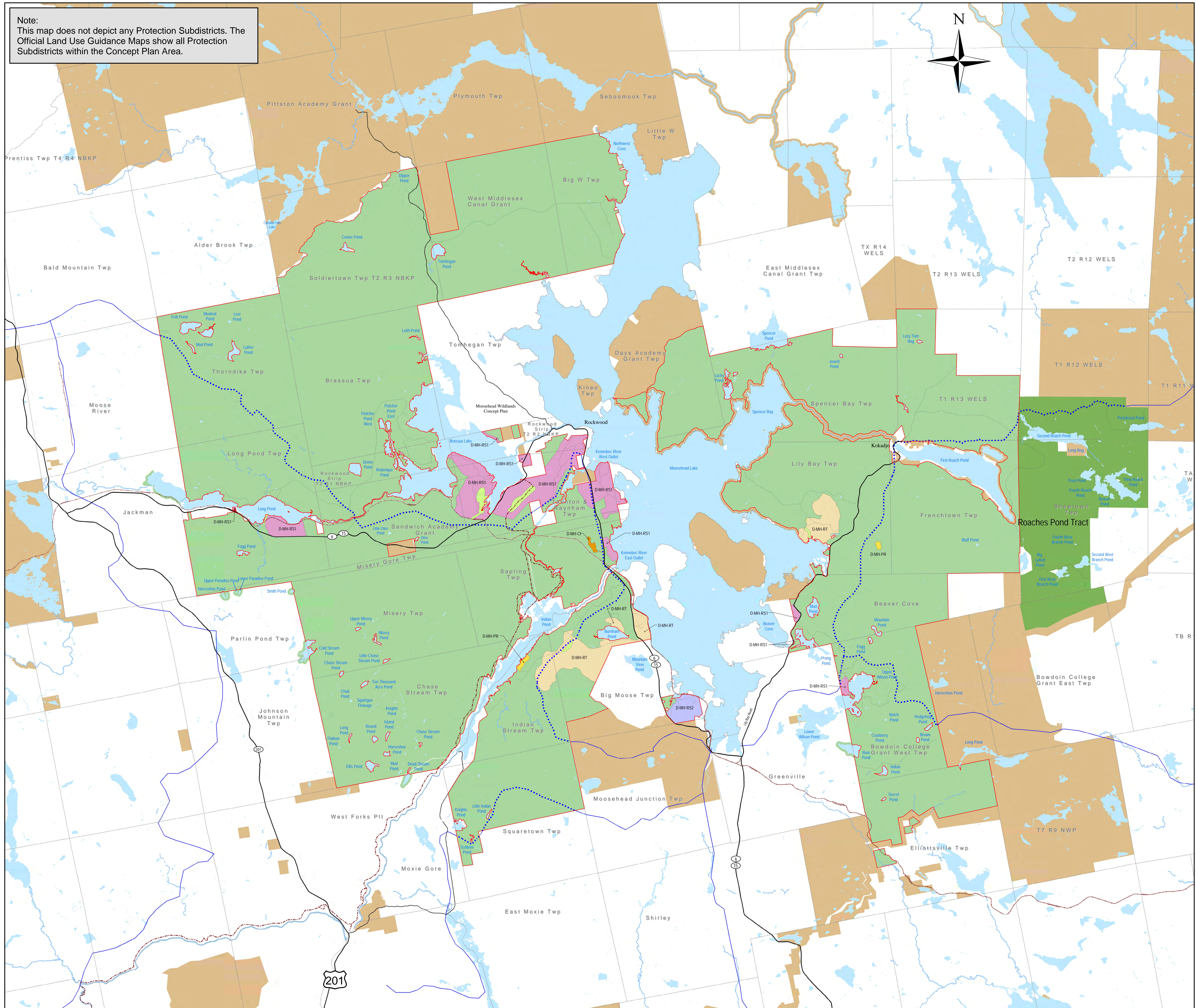


Concept Plan Summary

CONCEPT PLAN for PLUM CREEK'S LANDS in the MOOSEHEAD LAKE REGION

Note: This map does not depict any Protection Subdistricts. The Official Land Use Guidance Maps show all Protection Subdistricts within the Concept Plan Area.



Legend

- Resource Plan Protection (P-RP) Subdistrict
- Private, State, Federal Land in Conservation
- Moosehead Region Conservation Easement
- Roaches Pond Tract
- No Disturbance Area
- Residential Development Zone (D-MH-RS1)
- Residential/Resort Optional Zone (D-MH-RS2)
- Primitive Resort Development Zone (D-MH-PR)
- Resort Development Zone (D-MH-RT)
- Commercial Industrial Development Zone (D-MH-CI)
- Mapped Sand and Gravel Aquifer
- Major Road (Public)
- Minor Road (Public or Private)
- Approximate Moosehead-to-Mahoosucs Trail
- ITS Snowmobile Trail
- Existing Public ITS Snowmobile Trail
- Railroad

