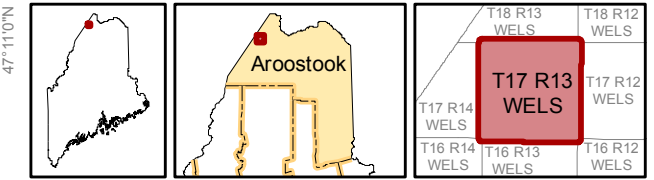


T17 R13 WELS



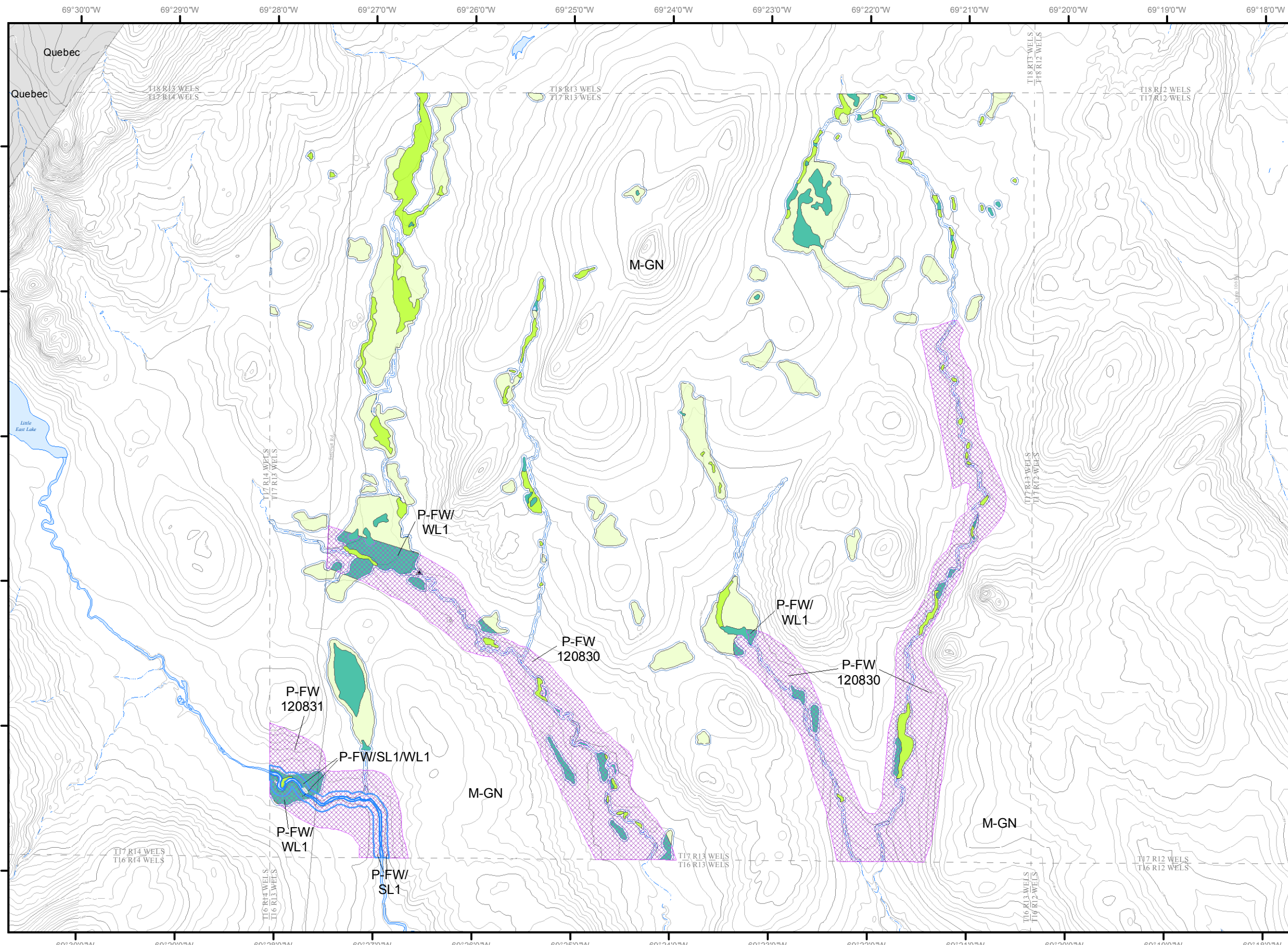
Aroostook County



Land Use Guidance Map
 Department of Agriculture, Conservation and Forestry
 Maine Land Use Planning Commission

Legend

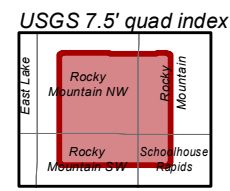
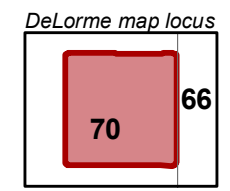
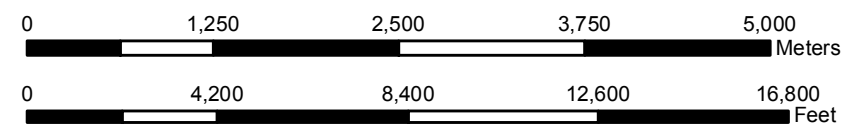
- PROTECTION SUBDISTRICTS
- P-FW: Fish and Wildlife
 - P-SL1: Shoreland - 250'
 - P-SL2: Shoreland - 75'
 - P-WL1: Wetlands of Special Significance
 - P-WL2: Scrub-shrub Wetlands
 - P-WL3: Forested Wetlands



This map does not show all designated P-WL Subdistricts, such as non-tidal water bodies and freshwater wetlands within 25 feet of flowing waters.

This map is a reduced-size version and should not be considered definitive. Full sized, official Land Use Guidance Maps are available on the LUPC website or by request.

Amendments			
Location #	Zoning Permit	Effective Date	Remarks



- Map amendment location
- Point at which a river drains 25 square miles - symbol points upstream (12 M.R.S. Sec. 682-B(4))
- MIDAS number: Unique number assigned to each standing body of water in Maine.
- Water Quality Limiting Lake - Refer to Section 10.23,E,3.g of the Commission's Land Use Districts and Standards.
- Lake Management Classes - Refer to Section 10.02 (Definitions) of the Commission's Land Use Districts and Standards.