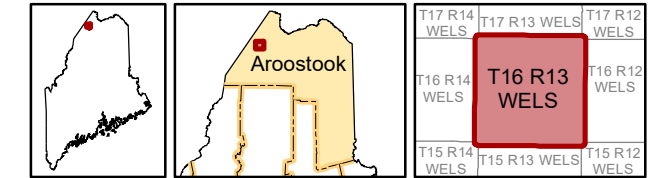


T16 R13 WELS



Aroostook County



Land Use Guidance Map
 Department of Agriculture, Conservation and Forestry
 Maine Land Use Planning Commission

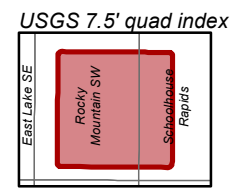
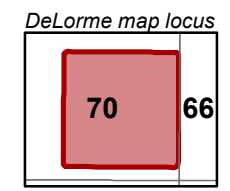
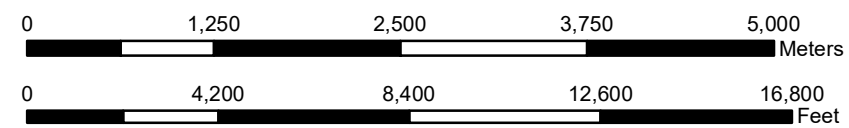
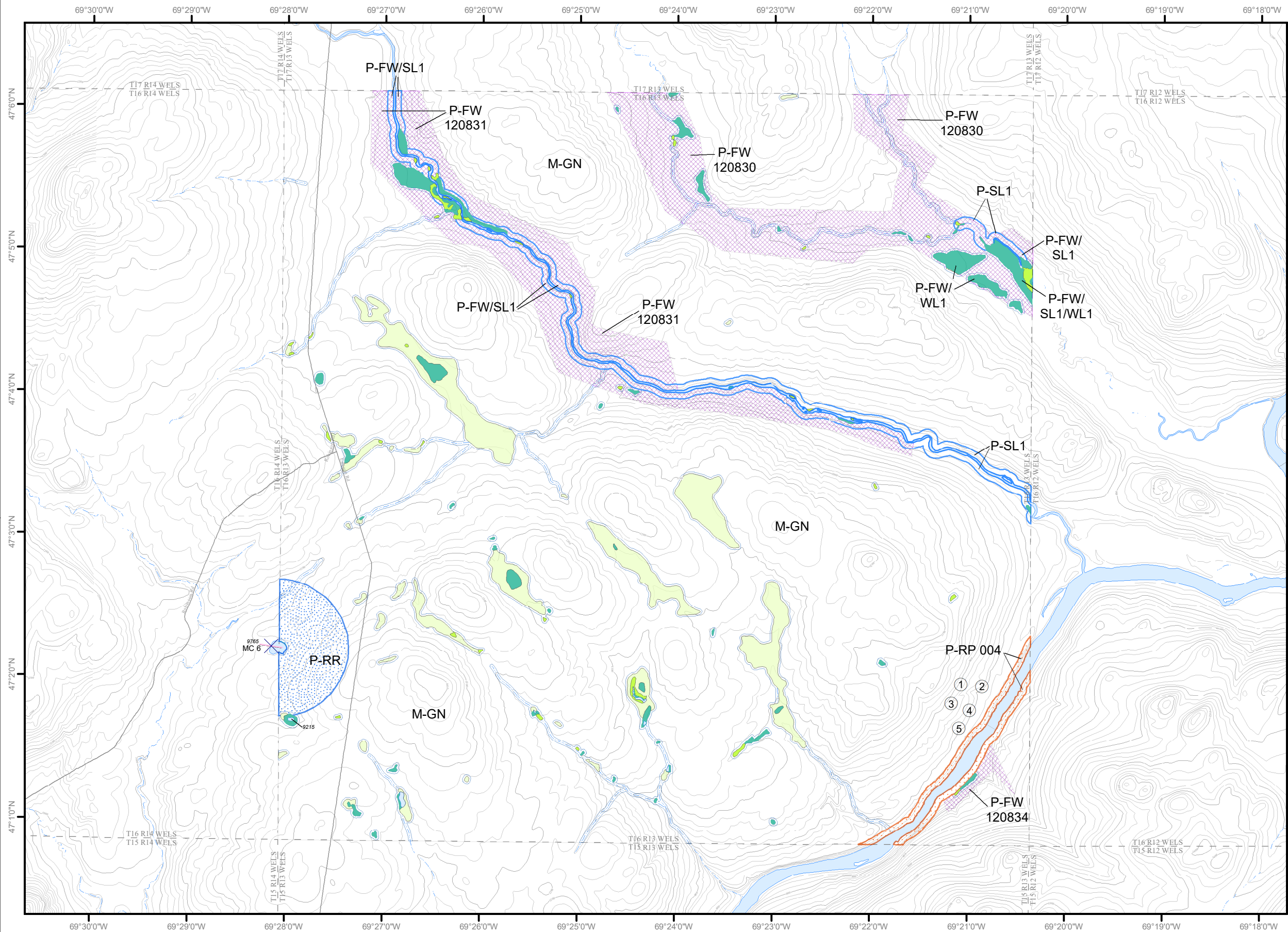
Legend

- MANAGEMENT SUBDISTRICTS**
- M-GN: General
- PROTECTION SUBDISTRICTS**
- P-FW: Fish and Wildlife
 - P-RP: Resource Plan
 - P-RR: Recreation
 - P-SL1: Shoreland - 250'
 - P-SL2: Shoreland - 75'
 - P-WL1: Wetlands of Special Significance
 - P-WL2: Scrub-shrub Wetlands
 - P-WL3: Forested Wetlands

This map does not show all designated P-WL Subdistricts, such as non-tidal water bodies and freshwater wetlands within 25 feet of flowing waters.

This map is a reduced-size version and should not be considered definitive. Full sized, official Land Use Guidance Maps are available on the LUPC website or by request.

Amendments			
Location #	Zoning Permit	Effective Date	Remarks
1	ZP224A	09/04/1992	P-RP 004 expires 8-29-2002
2	ZP224B	08/29/2002	P-RP 004 expires 8-29-2012
3	ZP738	07/28/2012	Adoption of digital NWI wetlands Replace portions of Resource Plan Protection P-RP 004 zoning
4	ZP224C	07/28/2012	P-RP 004 expires 8-29-2022
5	ZP224D	07/28/2022	P-RP 004 expires 7-28-2022



- ① Map amendment location
- ▲ Point at which a river drains 25 square miles - symbol points upstream (12 M.R.S. Sec. 682-B(4))
- 9999 MIDAS number: Unique number assigned to each standing body of water in Maine.
- WQLL Water Quality Limiting Lake - Refer to Section 10.23.E.3.g of the Commission's Land Use Districts and Standards.
- MC# Lake Management Classes - Refer to Section 10.02 (Definitions) of the Commission's Land Use Districts and Standards.

SOURCES: Maine Land Use Planning Commission, USGS