



## Hancock County



## Land Use Guidance Map

Department of Agriculture, Conservation and Forestry  
Maine Land Use Planning Commission

### Legend

#### DEVELOPMENT SUBDISTRICTS

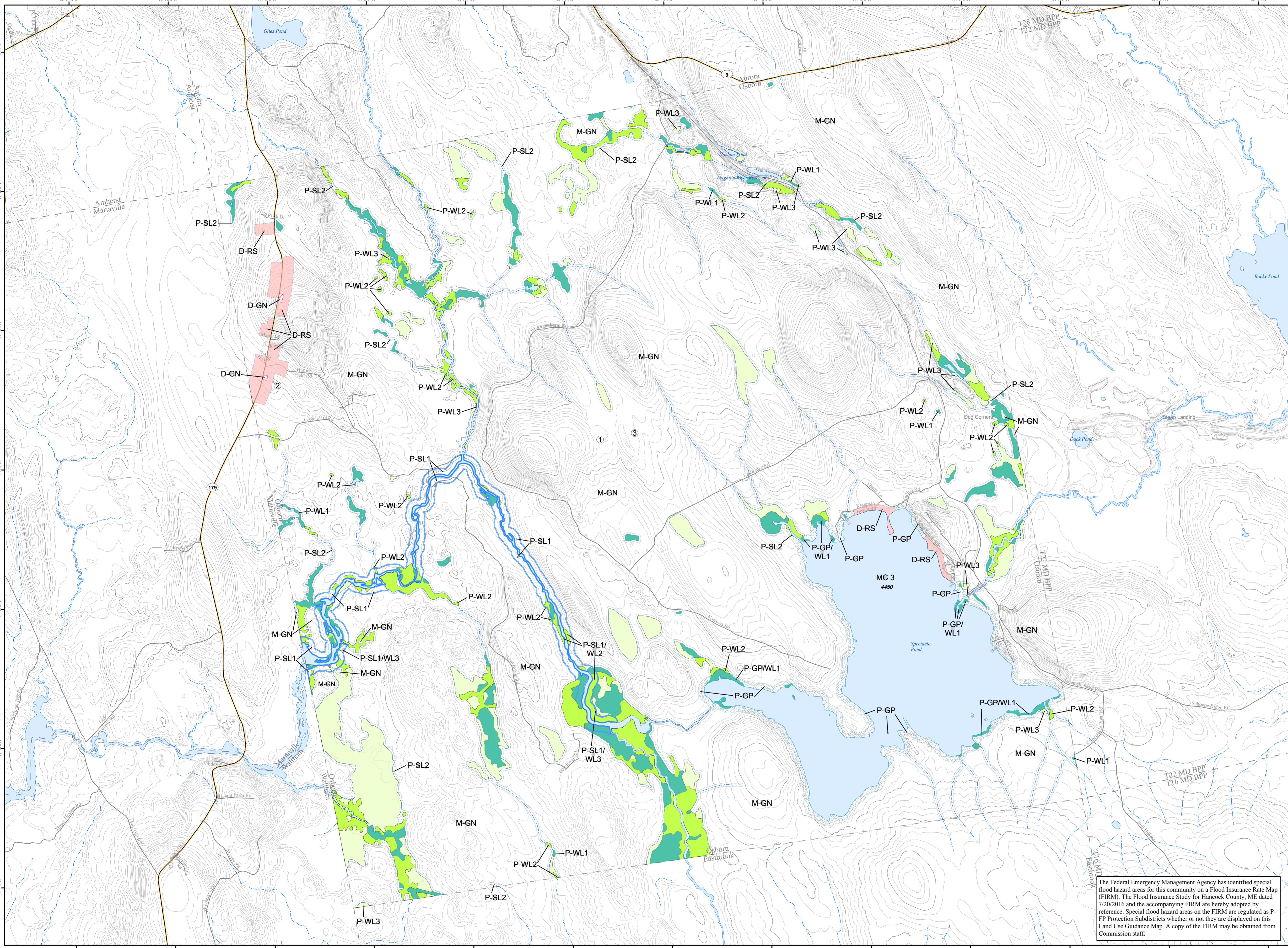
- D-GN: General
- D-RS: Residential

#### MANAGEMENT SUBDISTRICTS

- M-GN: General

#### PROTECTION SUBDISTRICTS

- P-GP: Great Pond
- P-SL1: Shoreland - 250'
- P-SL2: Shoreland - 75'
- P-WL1: Wetlands of Special Significance
- P-WL2: Scrub-shrub Wetlands
- P-WL3: Forested Wetlands



For complete descriptions of those areas included within the various subdistricts, and the associated regulations, refer to the Commission's Chapter 10 rules: Land Use Districts and Standards. Where any inconsistencies exist between the district boundaries, as shown on this map, and those described by the Commission's Land Use Districts and Standards, the latter shall govern.

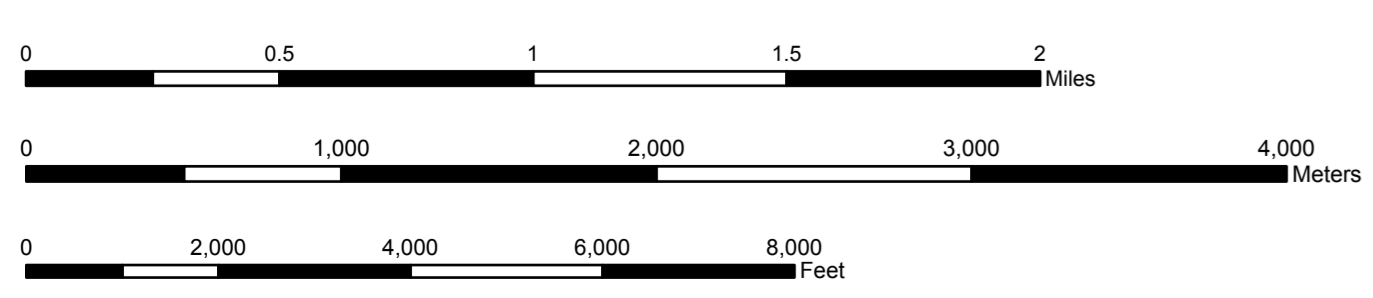
For simplicity, this map does not show all the Wetland Protection Subdistricts for areas identified pursuant to Section 10.23.N.2 such as the beds of rivers, lakes, and other water bodies, and freshwater wetlands within 25 feet of stream channels. Nevertheless, these areas are within P-WL Subdistricts. In addition, this map does not show the Shoreland Protection Subdistricts along stream channels flowing through wetlands. Nevertheless, these areas are within P-SL2 Protection Subdistricts. If the locations of flowing waters or bodies of standing water existing on the ground differ from those shown on the map, then, pursuant to 12 M.R.S., Section 685-A(2)(G), P-GP, P-RR, P-SL, P-WL, and other subdistrict boundaries that are based upon the location of such waters shall, as appropriate, be deemed to follow the flowing water or body of standing water existing on the ground.

This Land Use Guidance Map was adopted by the Maine Land Use Planning Commission on 08/03/2005, and became effective on 08/18/2005.

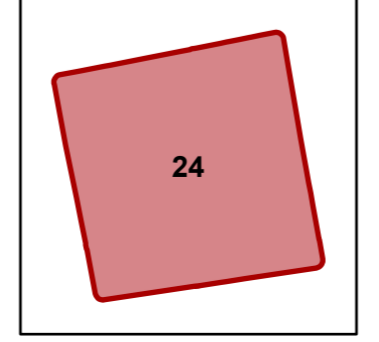
This map is certified to be a true and correct copy of the Official Land Use Guidance Map of the Maine Land Use Planning Commission.

By: Catherine M. Carroll, Director, Maine Land Use Planning Commission.

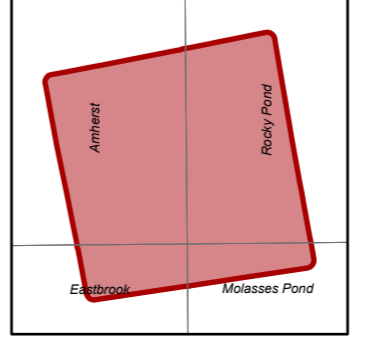
The Federal Emergency Management Agency has identified special flood hazard areas for this community on a Flood Insurance Rate Map (FIRM). The Flood Insurance Study for Hancock County, ME dated 7/20/2016 and the accompanying FIRM are hereby adopted by reference. Special flood hazard areas on the FIRM are regulated as P-FP Protection Subdistricts whether or not they are displayed on this Land Use Guidance Map. A copy of the FIRM may be obtained from Commission staff.



#### DeLorme map locus



#### USGS 7.5' quad index



- ① Map amendment location
- ▲ Point at which a river drains 25 square miles - symbol points upstream (12 M.R.S. Sec. 682-B(4))
- MIDAS number: Unique number assigned to each standing body of water in Maine.
- 9999 Water Quality Limiting Lake - Refer to Section 10.23.E.3.g of the Commission's Land Use Districts and Standards.
- WQLL Lake Management Classes - Refer to Section 10.02 (Definitions) of the Commission's Land Use Districts and Standards.
- MC#

| Amendments |               |                |   |
|------------|---------------|----------------|---|
| Location # | Zoning Permit | Effective Date | Remarks   |
| 1          | ZP760         | 04/28/2016     | Adoption of digital NWI wetlands  |
| 2          | ZP781         | 03/25/2021     | Map revision adoption of FEMA maps by reference involving Knox and Hancock Counties |
| 3          | ZP796         | 08/01/2024     | Clerical correction to FEMA map adoption text                                       |