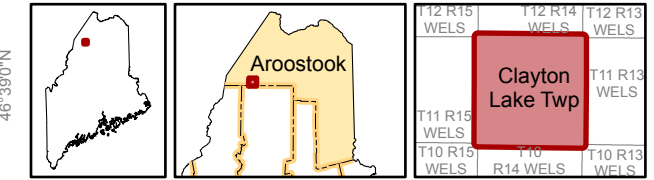


# Clayton Lake Twp.

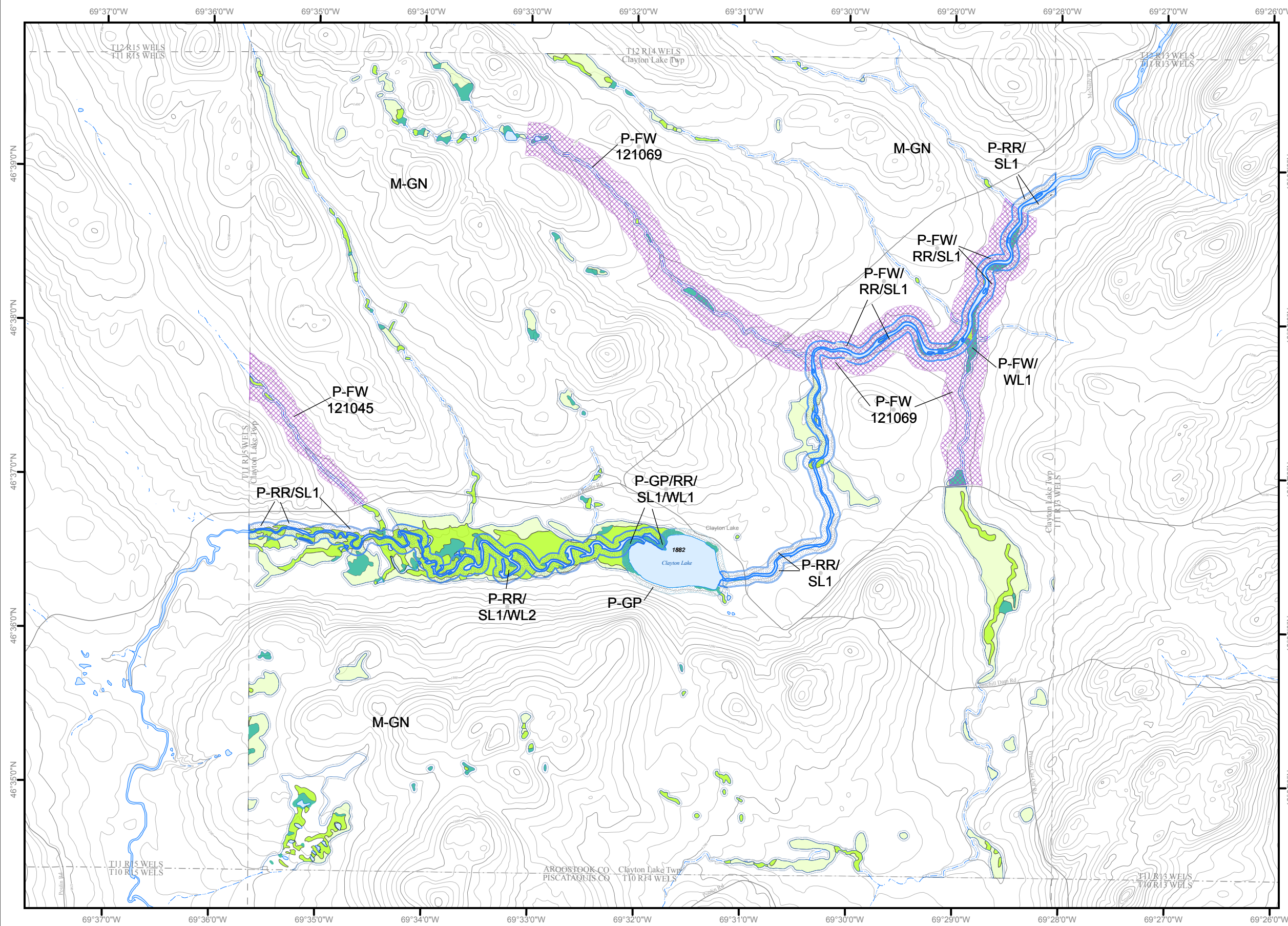


T11 R14 WELS  
Aroostook County



Land Use Guidance Map  
Department of Agriculture, Conservation and Forestry  
Maine Land Use Planning Commission

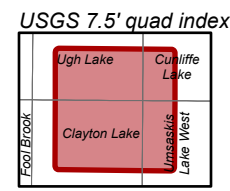
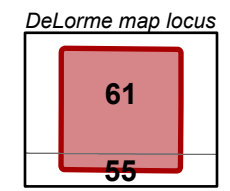
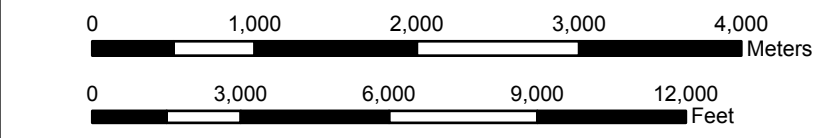
- Legend**
- MANAGEMENT SUBDISTRICTS**
- M-GN: General
- PROTECTION SUBDISTRICTS**
- P-FW: Fish and Wildlife
  - P-GP: Great Pond
  - P-RR: Recreation
  - P-SL1: Shoreland - 250'
  - P-SL2: Shoreland - 75'
  - P-WL1: Wetlands of Special Significance
  - P-WL2: Scrub-shrub Wetlands
  - P-WL3: Forested Wetlands



This map does not show all designated P-WL Subdistricts, such as non-tidal water bodies and freshwater wetlands within 25 feet of flowing waters.

This map is a reduced-size version and should not be considered definitive. Full sized, official Land Use Guidance Maps are available on the LUPC website or by request.

Amendments			
Location #	Zoning Permit	Effective Date	Remarks
		01/01/2007	T11 R14 WELS officially changed to Clayton Lake Twp.



- ① Map amendment location
- ▲ Point at which a river drains 25 square miles - symbol points upstream (12 M.R.S. Sec. 682-B(4))
- 9999 MIDAS number: Unique number assigned to each standing body of water in Maine.
- WQLL Water Quality Limiting Lake - Refer to Section 10.23,E.3.g of the Commission's Land Use Districts and Standards.
- Lake Management Classes - Refer to Section 10.02 (Definitions) of the Commission's Land Use Districts and Standards.

SOURCES: Maine Land Use Planning Commission, USGS