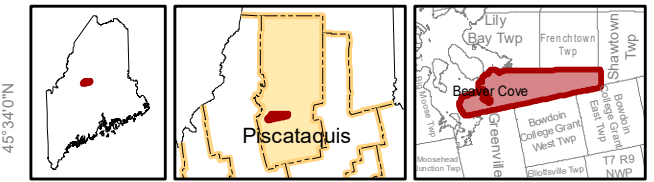


# Beaver Cove



TA R13 & 14 WELS  
Piscataquis County



Land Use Guidance Map  
Department of Agriculture, Conservation and Forestry  
Maine Land Use Planning Commission

## Legend

### DEVELOPMENT SUBDISTRICTS

- D-CI: Commercial Industrial
- D-GN: General
- D-RS: Residential

### MANAGEMENT SUBDISTRICTS

- M-GN: General

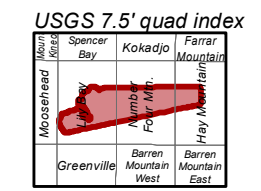
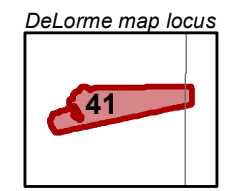
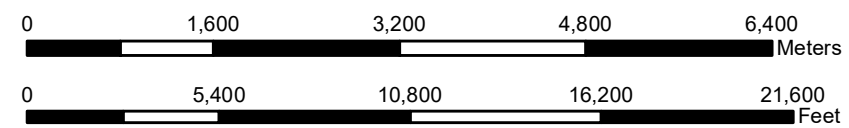
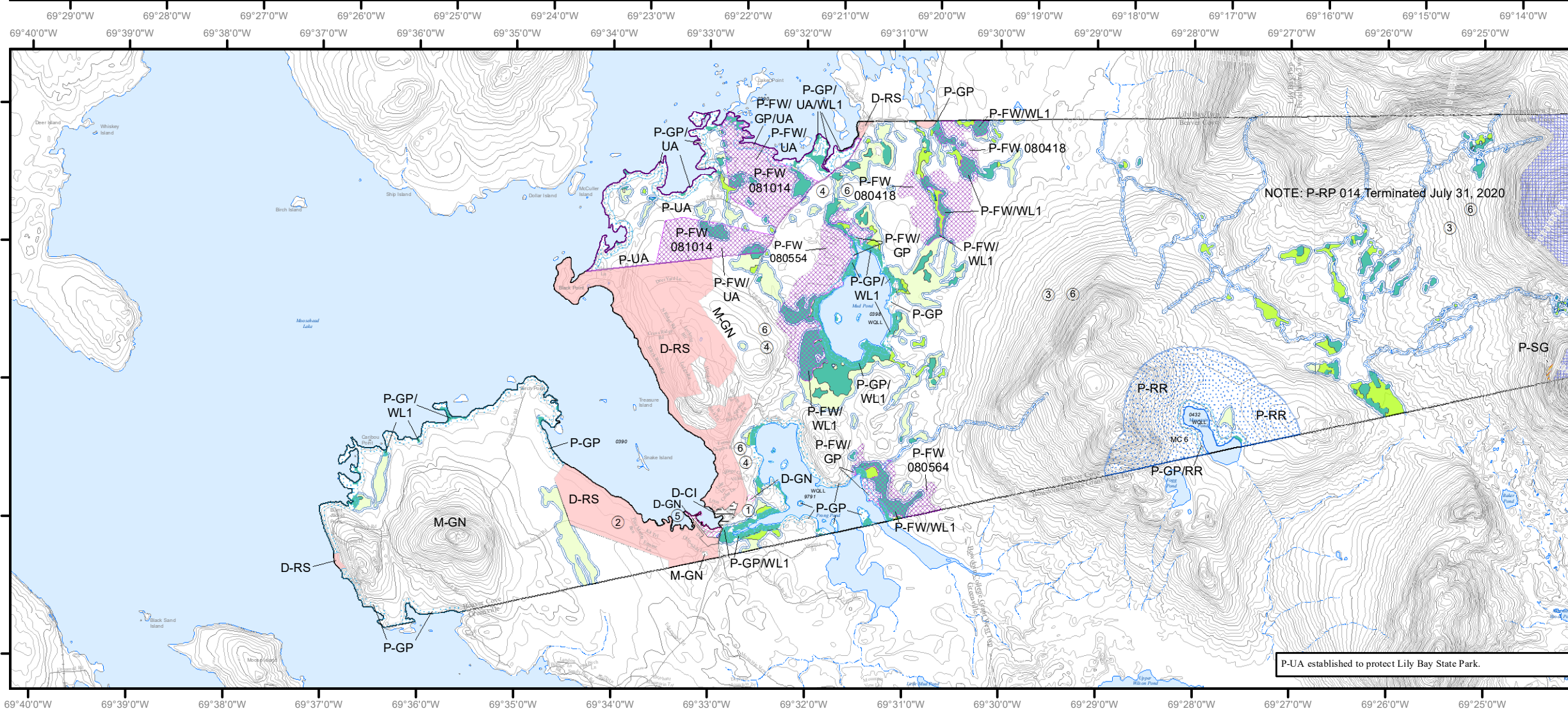
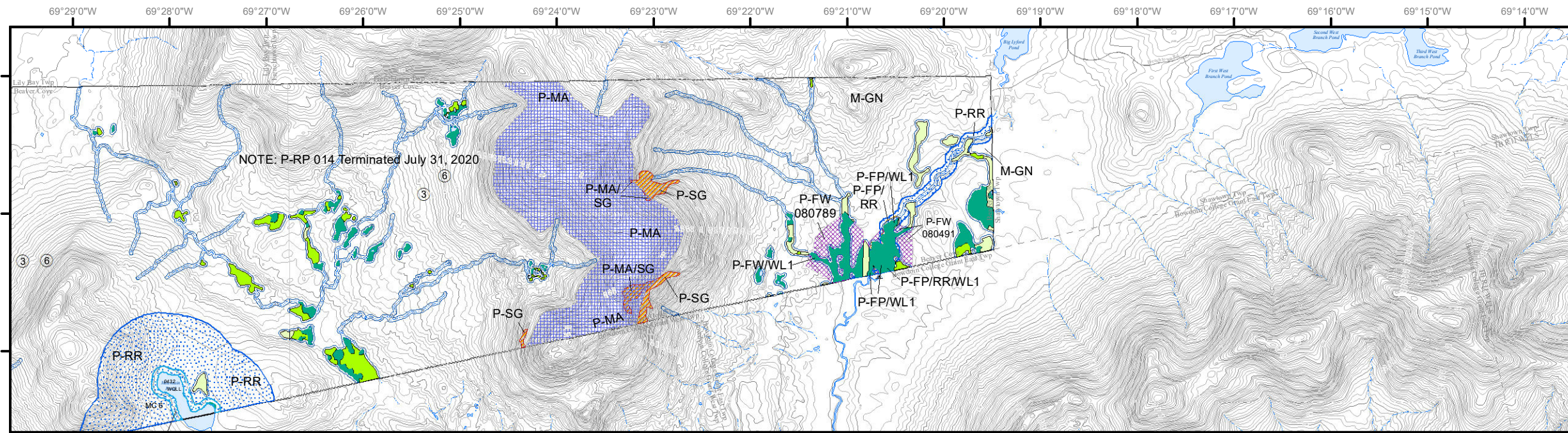
### PROTECTION SUBDISTRICTS

- P-FP: Flood Prone
- P-FW: Fish and Wildlife
- P-GP: Great Pond
- P-MA: Mountain Area
- P-RP: Resource Plan
- P-RR: Recreation
- P-SG: Soils and Geology
- P-SL2: Shoreland - 75'
- P-UA: Unusual Area
- P-WL1: Wetlands of Special Significance
- P-WL2: Scrub-shrub Wetlands
- P-WL3: Forested Wetlands

This map does not show all designated P-WL Subdistricts, such as non-tidal water bodies and freshwater wetlands within 25 feet of flowing waters.

This map is a reduced size version and should not be considered definitive. Full sized, official Land Use Guidance Maps are available on the LUPC website or by request.

Amendments			
Location #	Zoning Permit	Effective Date	Remarks
1	ZP676	06/05/2003	
2	ZP712	08/18/2005	Adoption of digital NWI wetlands
3	ZP707	11/22/2007	
4	ZP707A	10/08/2009	P-RP 014 Expires October 8, 2039
5	ZP739	08/19/2010	P-RP 014 Expires October 8, 2039
6	ZP707B	09/04/2012	
		07/31/2020	P-RP 014 Terminated



- Map amendment location
- Point at which a river drains 25 square miles - symbol points upstream (12 M.R.S. Sec. 682-B(4))
- MIDAS number: Unique number assigned to each standing body of water in Maine.
- Water Quality Limiting Lake - Refer to Section 10.23.E.3.g of the Commission's Land Use Districts and Standards.
- Lake Management Classes - Refer to Section 10.02 (Definitions) of the Commission's Land Use Districts and Standards.