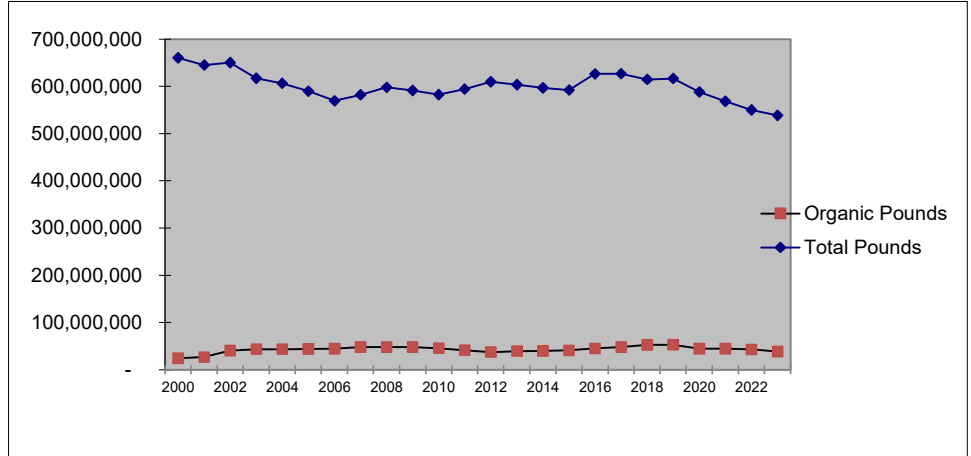
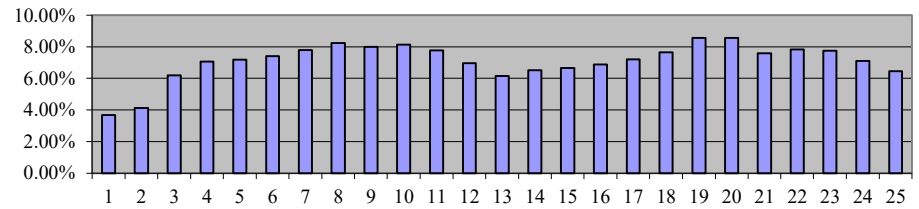


Date	Organic Pounds	Total Pounds	Percent	Number of Farms	Total Farms	% of Total Farms
2000	24,247,765	660,209,472	3.67%	37	466	7.94%
2001	26,580,456	645,014,133	4.12%	35	445	7.87%
2002	40,367,787	650,143,787	6.21%	59	417	14.15%
2003	43,612,789	617,316,748	7.06%	59	398	14.82%
2004	43,612,789	606,439,704	7.19%	59	378	15.61%
2005	43,804,796	589,967,703	7.42%	60	358	16.76%
2006	44,404,790	569,458,944	7.80%	65	344	18.90%
2007	48,001,937	582,265,486	8.24%	63	331	19.03%
2008	47,838,844	597,838,482	8.00%	65	327	19.88%
2009	48,142,934	591,318,896	8.14%	65	315	20.63%
2010	45,273,195	582,809,903	7.77%	61	304	20.07%
2011	41,399,573	594,242,408	6.97%	55	304	18.09%
2012	37,532,112	609,358,911	6.16%	60	307	19.54%
2013	39,403,377	603,668,280	6.53%	58	287	20.21%
2014	39,739,341	596,638,850	6.66%	56	271	20.66%
2015	40,755,132	592,120,664	6.88%	54	244	22.13%
2016	45,139,673	626,331,030	7.21%	62	245	25.31%
2017	47,910,680	626,757,655	7.64%	70	243	28.81%
2018	52,558,748	614,546,969	8.55%	68	221	30.77%
2019	52,929,875	616,931,622	8.58%	63	213	29.58%
2020	44,609,827	588,127,299	7.59%	56	195	28.72%
2021	44,487,386	568,210,208	7.83%	57	181	31.49%
2022	42,679,465	550,151,781	7.76%	58	165	35.15%
2023	38,329,173	538,315,281	7.12%	53	145	36.55%
2024	14,671,577	226,887,935	6.47%	49	141	34.75%



Organic Milk Production



Number of Organic Dairy Farms

