

# 2020 Year End

# MDOC Adult Data Report



## MDOC Data Team

This document contains key adult correctional data points to assist management and staff in making evidence-based decisions.

Randall Liberty  
Commissioner

Ryan Thornell, Ph.D.  
Deputy Commissioner

Maine Department of Corrections  
25 Tyson Drive  
State House Station 111  
Augusta Maine 04333-0111  
207-287-2711

3/17/2021



***NOTE: All programming and operational data for calendar year 2020 contained in this report has been impacted by the COVID-19 pandemic and precautionary measures DOC took to ensure the safety of staff and residents.***

## **Table of Contents**

1.0 Population & Demographics .....	3
1.1 Average Daily Population .....	3
1.2 Population Demographics .....	3
1.3 Length of Completed Stay .....	4
1.4 Special Housing: Restrictive Housing and Special Management Population .....	4
1.5 Intensive Mental Health Unit Average Population .....	6
2.0 Correctional Programming.....	7
2.1 Correctional Program Fidelity .....	7
2.2 Case Management .....	8
Case Management Improvement & Training.....	8
2.3 Medication Assisted Treatment (MAT) Initiative .....	11
2.4 Treatment, Educational & Vocational Programming - Men.....	12
2.5 Treatment, Educational & Vocational Programming - Women .....	16
2.6 High School Equivalency Diplomas Earned While Incarcerated.....	20
2.7 College Programming at Maine Department of Corrections .....	21
2.8 Programming Tablets .....	22
3.0 Classification .....	23
3.1 Admissions & Releases.....	23
3.2 New Admissions by Crime Group - Men .....	26
3.3 New Admissions by Crime Group - Women.....	27
3.4 Current Custody Ratings.....	28
3.5 Facility Transfers .....	29
Number of Transfers between Facilities .....	29
Return to Higher Custody.....	30
3.6 SCCP Cases by Month.....	31
4.0 Office of Victim Services .....	32



## 1.0 Population & Demographics

**1.1 Average Daily Population (ADP)** The ADP has changed significantly over the last five years. From 2016 to 2018 the census for both male and female residents increased but starting in 2019 there has been a continuing decrease of census. From the peak in 2018 to end of 2020, there was a decrease of 456 male residents (21%). In comparison, the five year high for women was also in 2018 at 236 residents. The women’s ADP decreased by 85 since 2018 (36%).

	Male					Female				
	2016	2017	2018	2019	2020	2016	2017	2018	2019	2020
January	1,892	2,134	2,186	2,143	1,988	199	229	226	225	188
February	1,917	2,143	2,190	2,117	1,985	200	224	235	218	185
March	1,932	2,169	2,207	2,132	1,960	205	224	239	211	178
April	1,949	2,149	2,226	2,109	1,863	200	229	233	213	161
May	1,967	2,142	2,237	2,070	1,774	200	228	230	211	148
June	1,990	2,125	2,245	2,058	1,691	204	224	234	211	143
July	1,995	2,117	2,228	2,042	1,652	209	225	240	211	142
August	2,021	2,119	2,211	2,028	1,647	223	227	239	214	138
September	2,049	2,139	2,202	2,025	1,649	221	225	244	210	135
October	2,097	2,150	2,202	2,032	1,637	223	226	240	208	138
November	2,122	2,161	2,188	2,018	1,598	223	222	234	203	134
December	2,128	2,188	2,174	2,015	1,588	226	223	234	190	129
<b>Avg pop</b>	<b>2,005</b>	<b>2,145</b>	<b>2,208</b>	<b>2,066</b>	<b>1,752</b>	<b>211</b>	<b>225</b>	<b>236</b>	<b>210</b>	<b>151</b>

### 1.2 Population Demographics

#### Average Age

	M	F
2016	38	35
2017	38	36
2018	39	36
2019	39	37
2020	40	38
<b>Average Age</b>	<b>39</b>	<b>36</b>

No statistically significant changes in average age over a five-year period (2016-2020) however, when looking at individual years it does show a slight but steady increase in annual average age of both male and female facility residents.

#### Racial Breakdown by Gender

		2016	2017	2018	2019	2020
<b>M</b>	Asian	1%	0%	1%	1%	1%
	Black or African American	9%	10%	12%	12%	11%
	Native American	2%	3%	3%	3%	3%
	Native Hawaiian or Pacific Islander	0%	0%	0%	0%	0%
	Two or More Races	1%	1%	1%	1%	1%
	Unknown	1%	2%	2%	3%	4%
	White	85%	84%	81%	80%	80%
	<b>Total</b>	<b>100%</b>	<b>100%</b>	<b>100%</b>	<b>100%</b>	<b>100%</b>
<b>F</b>	Asian	1%	0%	1%	0%	0%
	Black or African American	3%	4%	3%	4%	4%
	Native American	5%	5%	3%	5%	4%
	Two or More Races	1%	2%	2%	2%	2%
	Unknown	1%	1%	1%	1%	2%
	White	88%	88%	91%	88%	88%
	<b>Total</b>	<b>100%</b>	<b>100%</b>	<b>100%</b>	<b>100%</b>	<b>100%</b>

Male “Black or African American” population from 2016 to 2020 has a five-year average of 11% of DOC’s residential male population. Both 2018 and 2019 were highest at 12% while the percentage of “White” men in the population has decreased from 85% in 2016 to 80% in 2020.

Female residents break down essentially the same for the last five years.

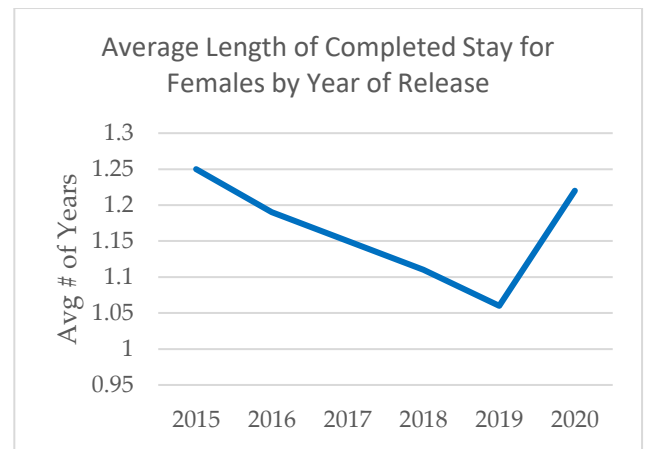
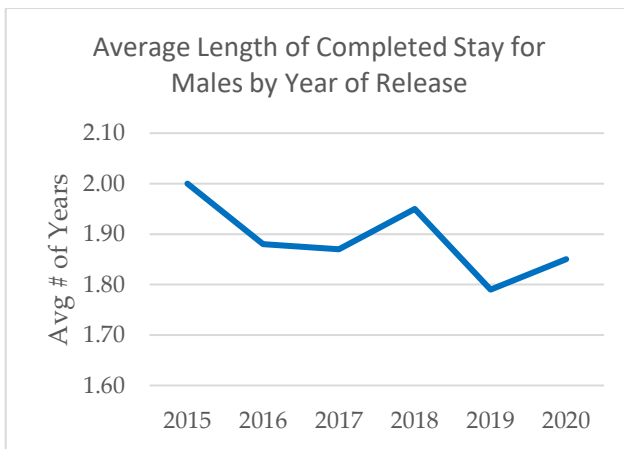


# Maine Department of Corrections 2020 Year End Report

## 1.3 Length of Completed Stay

The average length of completed stay by number of years for all clients with a straight release or release to probation or parole are outlined below per year, by gender.

	Males	Females
2015	2.00	1.25
2016	1.88	1.19
2017	1.87	1.15
2018	1.95	1.11
2019	1.79	1.06
2020	1.85	1.22



## 1.4 Special Housing: Restrictive Housing and Special Management Population

On July 1, 2020 the policies pertaining to Special Housing (SH) were revised resulting in a change to the status types along with other restrictive housing and special management criteria and definition changes.

The below chart shows the average length of completed stay in special housing in 2020 by the number of days in each special housing type.

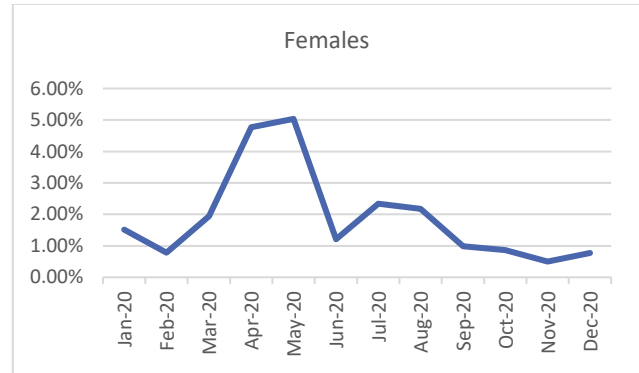
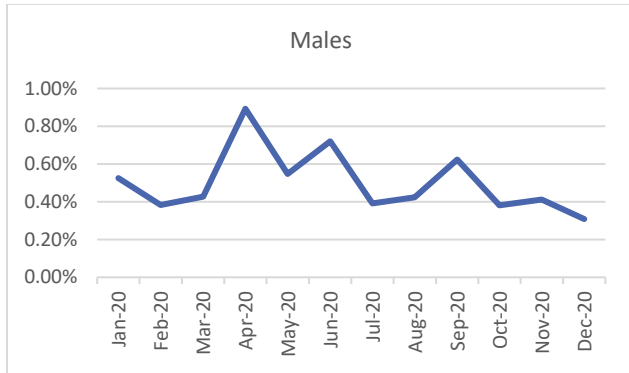
	Males	Females
Administrative Status (Restrictive Housing)	10.42	8.84
Disciplinary Segregation (Special Management)	35.02	14.61
Administrative Control Unit (Programming Step-Down Unit)	186.25	N/A



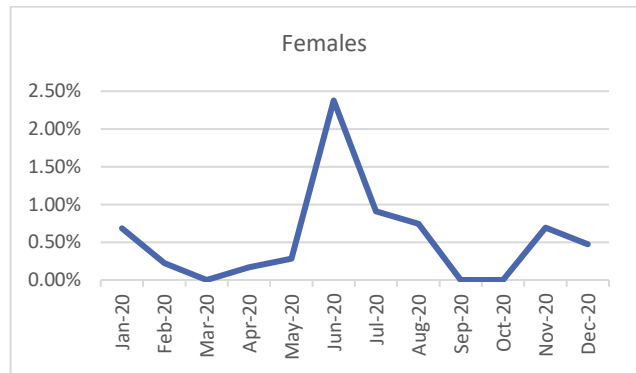
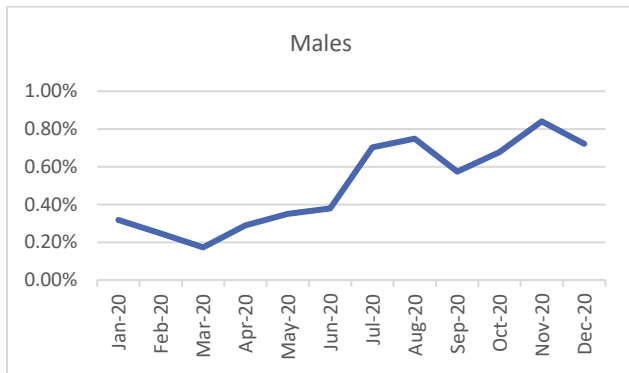
**Average Daily Population in Special Housing as a Percent of MDOC Total Population**

The below graphs show the average daily population as a percent of the population for each type of Special Housing status. (Admin Status includes Emergency Observation for months prior to July 2020)

**Percent of the Population on Administrative Status (Restrictive Housing Status)**



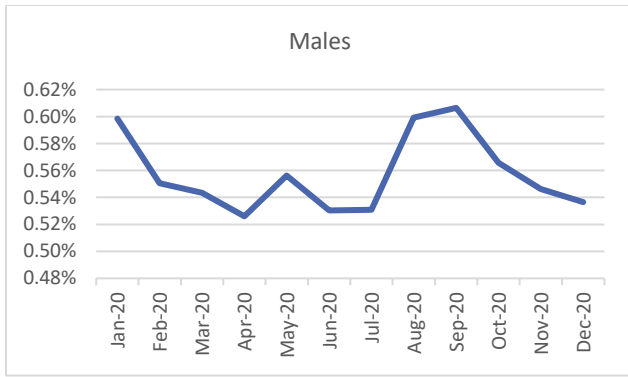
**Percent of the Population on Disciplinary Segregation (Restrictive Housing Status)**



**Percent of the Population in the Administrative Controls Unit (Special Management Status)**



# Maine Department of Corrections 2020 Year End Report



*Note: The female population does not have an Administrative Controls Unit.*

## 1.5 Intensive Mental Health Unit Average Population

The Intensive Mental Health Unit is located at the Maine State Prison. The purpose of the IMHU is to treat and help stabilize those with severe and persistent mental health conditions within Maine Department of Corrections adult facilities, as well as residents of county correctional facilities who need intensive mental health stabilization services.

	2017 Average Population	2018 Average Population	2019 Average Population	2020 Average Population	4 Year Average Population
January	24	26	25	26	<b>25</b>
February	25	24	26	27	<b>26</b>
March	26	26	27	26	<b>26</b>
April	25	28	26	23	<b>26</b>
May	24	27	26	22	<b>25</b>
June	23	29	24	22	<b>25</b>
July	23	27	25	24	<b>25</b>
August	24	27	25	24	<b>25</b>
September	25	28	25	21	<b>25</b>
October	25	28	26	21	<b>25</b>
November	24	27	26	23	<b>25</b>
December	27	26	27	23	<b>26</b>
<b>Annual Average</b>	<b>25</b>	<b>27</b>	<b>26</b>	24	<b>26</b>

## Behavioral Health Prevalence Among Adult DOC Population

2020 Monthly Averages:

- Psychotropic Medication
  - 836 -Average monthly clients treated with psychotropic medication
  - 44% - Average % of the total ADP for 2020 were being treated with psychotropic medication
- Behavioral health
  - 54- Average monthly number of behavioral health screenings in 2020
  - 1,155- Average monthly behavioral health follow-up contacts
  - 681- Average monthly sick call requests responded to for behavioral health needs



## 2.0 Correctional Programming

### 2.1 Correctional Program Fidelity

Beginning in the spring of 2016, DOC staff participated in a University of Cincinnati Corrections Institute (UCCI) training on fidelity monitoring using their group observation and coaching process. The form is designed to provide a platform for trained staff to observe and rate program delivery in six individual skill areas and adherence to specific program curriculums, providing an overall fidelity score. The scores can range from 0-2. A zero score indicates “needs improvement,” 1 indicates “satisfactory,” and 2 “very satisfactory.” Initial overall score goals for Maine DOC programs was set at 1.5, with no individual skill area being under 1. All scores for each observation are entered in a database that keeps cumulative overall scores for each program.

Immediately following each observation, rater feedback is provided to program staff to highlight strengths and areas of needed improvement. Cumulative reporting on each program has been provided to identify Department-wide areas of need, and specific targeted training to reinforce skill areas has been provided.

This chart shows a 4-year comparison of fidelity scores and number of observations completed, by program name. When looking at individual years, our pilot year of 2017 has the lowest scores as expected (least fidelity to program model). 2018 shows the highest scores, although the change from 2018 to 2019 was insignificant. Due to COVID-19, 2020 observations were few. Even with fewer 2020 observations taking place, *strong, consistent fidelity is demonstrated throughout all our core programs being monitored by the observation process.*

	T4C	CBI-SA	CBI-SO	LIB
2020 Overall Fidelity Score	1.92	1.80	1.76	1.79
2019 Overall Fidelity Score	1.84	1.87	1.90	1.90
2018 Overall Fidelity Score	1.91	1.87	1.91	1.91
2017 Overall Fidelity Score	1.74	1.80	1.81	1.90
4 Year Average Fidelity Score	1.85	1.84	1.85	1.88
Fidelity Change 2020 to 4 Year Ave	0.07	-0.03	-0.09	-0.09
2020 Total Observations	1	5	4	5
2019 Total Observations	6	9	9	22
2018 Total Observations	11	21	6	26
2017 Total Observations	14	14	20	3
4 Year Average Observations	8	12	10	14
Change in Observations 2020 to 4 Year Ave	-7	-7	-6	-9

2020 fidelity scores for each of the programs being monitored remained high, however, the number of programs observed was far below annual average. This was largely because of restrictions in place regarding COVID-19 precautions and outbreaks within the adult correctional facilities.



## **2.2 Case Management**

**2020** was a year of unique challenges for the MDOC CM team. Most, if not all of these challenges were met through new strategies, collaboration and a steadfast dedication to our residents and meeting their needs.

Bi-monthly case manager in person trainings were put on hold due to Covid-19. Instead, the use of Microsoft Teams and Zoom enabled connectivity regarding facility to facility collaborations and reintegration planning. Occasional check-ins were held with CMs from each facility. Understanding what we were all facing somehow brought the team together in dealing with the challenging variables of Covid-19 and the occasional (and necessary) facility lockdowns.

CMs facilitated residents to use Zoom to maintain a visit schedule with their families and loved ones, facilitated by our CMs.

During facility lockdowns, CMs didn't miss a beat. Along with engaging their clients in risk reducing exercises, they also stood chow, took out the trash and supported security in whatever was required to be done.

We welcomed many new correctional CMs in 2020. At MCC Katherine Hannan and Marita Dorazio and at Southern Maine Women's Reentry Center Dan Rush. At MSP, Jake Shirey, Nick Clapperton, Jay Berube, Stacey Crafford and Dan Cushman all joined the ranks of correctional CM. While all hit the ground running, the opportunity to roll out the CM Coaching tool was seized with thanks to coaches Chris Britting and Jason Palmer for providing a new type of on the job training.

We ended 2020 on a very high note with Deputy Commissioner Dr. Thornell presenting (virtually) the *Excellence in Case Management Practices Award* to **Vicki Sheehan** at the *Maine State Prison*. Vicki is a true professional whose passion and dedication in supporting the MDOC mission is unequalled. Others nominated for this honor included: Marita Dorazio, Noah Boucher, Richard Guckin and June Allen.

### **Case Management Improvement & Training**

The Division of Correctional Programming initiated an aggressive training plan in 2016 to assist the Correctional Case Management (CM) team in skill acquisition and development. The initial training, "Prisoner Engagement, Observation and Documentation" provided the team a comprehensive review of policy 23.04, Assessment and Case Management, as well as a strategic approach to fully implement all aspects of the policy into their individual practice.

The team has progressed greatly since that initial training. Over the last three years, training topics became more advanced as case management data collected revealed a more robust and positive outcome for both current residents and those releasing. In 2017, similar trainings were provided for all Unit Managers (UM) to enhance opportunities for growth and development and in support of the CM efforts. Since initiating the targeted training for CMs and UMs, positive development in case management skills has shown a solid trend of improvement to engage DOCs residents in risk reduction activities. Trainings have continued quarterly and uninterrupted since 2016.

Through targeted trainings, coaching and oversight, the department's case management team continues increasing their capacity to deliver effective case management services to our incarcerated population. In 2019 these efforts were recognized with the promotion of two case managers to the role of unit manager. A culture of excellence is growing throughout the department led by the dedication of our CMs through delivering evidence-based programs and practices which will undoubtedly contribute to a reduction in recidivism in coming years.





# Maine Department of Corrections 2020 Year End Report

## Targeted CM Trainings since 2016 Include:

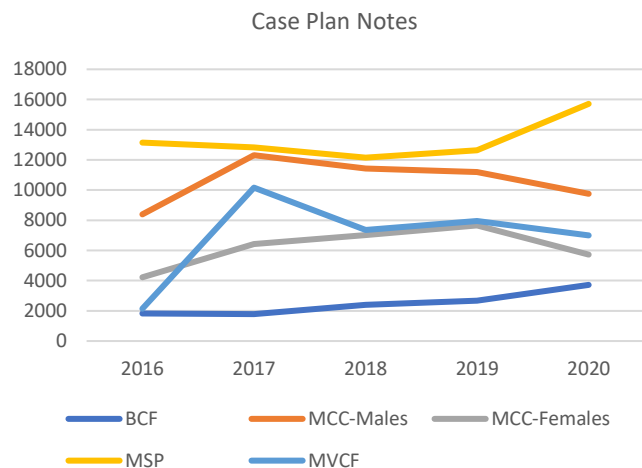
- Ethics for the Correctional Case Manager
- Medication Assisted Treatment (MAT)
- Cognitive Behavioral Treatment
- Veteran Services and Human Trafficking
- Role of the Correctional Case Manager
- Case Planning Essentials
- Evidence Based Principles of Effective Prisoner Intervention
- Core Correctional Practices
- LSI-r Review; Interpretation and utility in case plan development
- Supervision and Management of Prisoners
- ODARA (Ontario Domestic Assault Risk Assessment)
- Risk, Need, Responsivity and Fidelity.
- Building Productive Teams
- Leadership
- Cognitive Behavioral Treatment
- Human Trafficking
- Veteran Services

## Case Planning Improvement Statistics

### Case Plan Documentation

The chart below shows the average yearly % of case plans with an up to date status. Overall percentages over the last couple years were higher than 2017 and 2018, showing some improvement. The charts below show the total number of case plan notes entered by CMs, by facility, over a 5-year period.

	2017 Facility Ave	2018 Facility Ave	2019 Facility Ave	2020 Facility Ave
<b>Bolduc</b>	92%	88%	96%	93%
<b>DCF</b>	41%			
<b>MCC-M</b>	91%	86%	85%	76%
<b>MCC-F</b>	89%	88%	85%	84%
<b>MSP</b>	81%	72%	76%	76%
<b>MVCF</b>	95%	88%	91%	94%
<b>All Fac. Avg.</b>	82%	84%	87%	85%



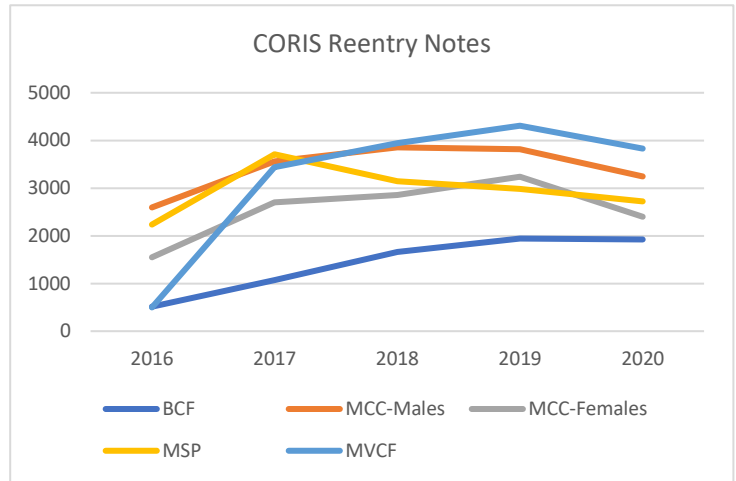


# Maine Department of Corrections 2020 Year End Report

## Reentry Contacts

DOC policy dictates at a minimum, there must be a case manager reentry note monthly starting at 9 months to discharge. The chart below shows the yearly average % of required reentry contact notes entered. Since tracking in 2017, there has been a 21% improvement in reentry documentation. The chart below to the right shows the total reentry notes written by case workers, by facility, over a 5-year span.

	2017 Ave	2018 Ave	2019 Ave	2020 Ave
<b>Bolduc</b>	51%	87%	99%	96%
<b>DCF</b>	35%			
<b>MCC-M</b>	91%	88%	92%	90%
<b>MCC-F</b>	84%	99%	99%	94%
<b>MSP</b>	78%	85%	92%	89%
<b>MVCF</b>	92%	97%	98%	97%
<b>All Fac. Ave.</b>	72%	91%	96%	93%





### **2.3 Medication Assisted Treatment (MAT) Initiative**

On July 1, 2019, in response to the current opioid epidemic in Maine and in accordance with Governor Mills' Executive Order, the Maine Department of Corrections (MDOC) launched a pilot for residents in MDOC adult correctional facilities diagnosed with opioid use disorder (OUD). MDOC's medication assisted addiction treatment (MAT) services were implemented in collaboration with Wellpath (MDOC's comprehensive medical care provider) and Groups Recover Together (a community agency serving those with OUD). Pilot year funding for the program in FY20 totaled \$1.2 million, including \$450,000 from Maine's Office of Behavioral Health (OBH). Funding for FY21 totals \$1.7 million of which \$830,000 is from Maine OBH.

MAT is considered one of the highest standards of care for individuals diagnosed with OUD, and the purpose of addressing addictions with medication is to reduce cravings for opiates which helps individuals more effectively manage personal triggers and engage in prosocial activity, including counseling/treatment. MDOC's MAT treatment services utilize buprenorphine and naltrexone as the primary medications prescribed by medical providers.

In July 2019, MAT was initiated at Maine Correctional Center (men and women), Southern Maine Women's Reentry Center, and Bolduc Correctional Facility. The pilot treatment served both male and female residents who were within three months of discharge from MDOC custody and determined to be clinically eligible by a medical provider. Participation in MAT was and is strictly voluntary and requires informed consent and acknowledgment of the risks and benefits of treatment. Treatment started in the facility, and continuity of care upon discharge was assured with MDOC's community partner, Groups Recover Together.

After an effective launch and early successes, MAT was initiated at Mountain View Correctional Center (in partnership with Day One) on November 4, 2019, and at Maine State Prison, in February 2020 and is now available throughout our adult correctional facilities. Also, in February 2020, the timeframe to start treatment increased from three months of discharge to six months of discharge. At that same point in time, the program was expanded to include all those newly admitted to MDOC who were receiving MAT prior to entry, thus providing continuity of care regardless of sentencing. Beginning in February 2020, all residents admitted to MDOC on new charges from a county jail or as a probation return who were receiving MAT upon admission, were provided with continuity of care. This accounted for 16 residents during the pilot year.

Prior to discharge from MDOC custody MAT residents are provided with comprehensive discharge planning including linkages to community-based continuity of care services. Groups Recover Together and Day One assist MDOC with securing post-release services and linking residents with MAT providers in local communities, and when appropriate, by making connections to out of state providers as well. At discharge, along with a copy of their release plan and MAT bridge prescription, residents receive a naloxone (Narcan) kit and hands on teaching for responding to an overdose. The kit also contains an education resource on overdose response for family and friends.

At the end of 2020, the following are stats for residents transitioning to the community for continuity of care:

- 532 transitioned to community with community providers
  - 442 men
  - 90 women
- 186 were active in treatment in an adult correctional facility
  - 169 men
  - 17 women
- 197 residents were on a waitlist for MAT services pending final assessment and meeting criteria



# Maine Department of Corrections 2020 Year End Report

## 2.4 Treatment, Educational & Vocational Programming - Men

### Statewide Treatment Programming

The programs listed below are core treatment programs for the adult facility male population. The chart demonstrates core programs successfully completed by residents, statewide, by calendar year. Included are cognitive behavioral treatment programs, residential and outpatient substance use disorder programming, residential problematic sexual behavior treatment, domestic violence programming, and parenting programs.

Men's Treatment Programming	Successful Completions				
	2016	2017	2018	2019	2020
Alternatives To Violence	13	31	19	63	34
Anger Management	101	33	27	32	6
CBI-IPV					40
Challenge Program	82	59	21	23	9
Criminal Addictive Thinking	17	35	19	1	3
DV Programming	92	138	159	110	50
Inside-Out Dads	114	88	68	21	11
Long Distance Dads	28	15	3	25	17
MAT				81	362
New Freedom		23	47	43	40
Problem Sexual Behavior Treatment CBI-SO MVCF	41	64	35	44	45
Problem Sexual Behavior Treatment Program MVCF	49	65	28	23	33
Problem Sexual Behavior Treatment- Maintenance				6	20
Psychology Of Incarceration	120	92	25	37	20
R.U.L.E.	11	16	15	10	
R&R2				13	63
Recovery Peer Support- Coach	31	49	22	13	3
Recovery Peer Support- Participant	1		21	26	5
SAFE				69	118
SAPHE			6	6	6
CBI-SA	29	107	84	62	60
Individual (substance use disorder treatment)		23	55	74	84
Living in Balance- Core	33	241	202	212	179
Living in Balance- Other		1	4	3	2
Living in Balance- Relapse Prevention	24	56	76	121	97
Maintenance		20	26	34	1
Prime For Life	79	75	65	67	53
Prime Solutions	43	10	28	44	42
RSU MVCF	35	36	46	33	24
RSUT Helping Men Recover (MSP)					9
RSUT- LIB (MSP)					15
Seeking Safety	8	55	51	53	16
Stages of Change		56	23	16	1
The Impact of Crime	7	8	16	39	9
Thinking for a Change	145	167	139	80	30
Young Adult Resident Program	22	29	29	25	15
<b>Total Successful Completions</b>	<b>1125</b>	<b>1592</b>	<b>1359</b>	<b>1509</b>	<b>1522</b>
<b>Total Unique Men Involved</b>	<b>789</b>	<b>1023</b>	<b>903</b>	<b>962</b>	<b>952</b>
<b>Total Unique Male Population by Year</b>	<b>3512</b>	<b>3664</b>	<b>3716</b>	<b>3485</b>	<b>2835</b>
<b>% of Unique Male Pop Involved</b>	<b>22%</b>	<b>28%</b>	<b>24%</b>	<b>28%</b>	<b>34%</b>



# Maine Department of Corrections 2020 Year End Report

## Men's Substance Use Programming

Below are statewide men's core substance use disorder treatment programs, broken out by program name and year. Blank spaces indicate the program did not have participation or exist. The zeros in "Outpatient Generic" for 2017-2020 is due to the adding of individual program titles during this timeframe that more accurately capture which substance use disorder program was completed. Medication Assisted Treatment (MAT) was initiated in July 2019.

Men's Substance Use Disorder Treatment	Successful Completion				
	2016	2017	2018	2019	2020
DSAT	28	1			
MAT				81	362
CBI-SA	29	107	84	62	60
Individual		23	55	74	84
Living in Balance- Core	33	241	202	212	179
Living in Balance- Other		1	4	3	2
Living in Balance- Relapse Prevention	24	56	76	121	97
Outpatient (Generic SUD Treatment)	230				
Maintenance		20	26	34	1
Prime For Life	79	75	65	67	53
Prime Solutions	43	10	28	44	42
RSU MVCF	35	36	46	33	24
RSUT Helping Men Recover (MSP)					9
RSUT- LIB (MSP)					15
Seeking Safety	8	55	51	53	16
Stages of Change		56	23	16	1
<b>Total Successful Completions</b>	<b>509</b>	<b>681</b>	<b>660</b>	<b>800</b>	<b>945</b>
<b>Total Unique Men Involved</b>	<b>406</b>	<b>592</b>	<b>501</b>	<b>579</b>	<b>679</b>
<b>Total Unique Male Population by Year</b>	<b>3512</b>	<b>3664</b>	<b>3716</b>	<b>3485</b>	<b>2835</b>
<b>% of Unique Male Pop Involved</b>	<b>12%</b>	<b>16%</b>	<b>13%</b>	<b>17%</b>	<b>24%</b>

## Men's Problematic Sexual Behavior Programming

Below are problematic sexual behavior programming completions from 2016 through 2020, by program name. The problematic sexual behavior program "RULE" was discontinued in 2019. All problematic sexual behavior programming is now located at Mountain View Correctional Facility.

PROGRAM	Successful Completion				
	2016	2017	2018	2019	2020
Problem Sexual Behavior Treatment CBI-SO	41	64	35	44	45
Problem Sexual Behavior Treatment Program	49	65	28	23	33
Problem Sexual Behavior Treatment- Maintenance				6	20
R.U.L.E.	11	16	15	10	
SAPHE			6	6	6
<b>Total Successful Completions</b>	<b>101</b>	<b>145</b>	<b>84</b>	<b>89</b>	<b>104</b>
<b>Total Unique Men Involved</b>	<b>60</b>	<b>82</b>	<b>55</b>	<b>58</b>	<b>69</b>
<b>Total Unique Male Population by Year</b>	<b>3512</b>	<b>3664</b>	<b>3716</b>	<b>3485</b>	<b>2835</b>
<b>% of Unique Male Pop Involved</b>	<b>2%</b>	<b>2%</b>	<b>1%</b>	<b>2%</b>	<b>2%</b>



# Maine Department of Corrections 2020 Year End Report

## Men's Educational Programming

- COVID-19 created restrictions related to number of residents served as well as completions due to lockdowns, social distancing, external agencies shutting down, etc.
- Education programs shifted from in-person to computer and online-based.
  - Technology increases were made across all facilities, which ensured education and vocational programming continued.
  - Received a Mellon Grant which added 180 laptops and 20 COVID carts across facilities
  - Large increase in men's college semester completions in 2020

Men's Education Program	Successful Completion				
	2016	2017	2018	2019	2020
Adult Basic Education	18	29	16	25	20
College	4	11	3	41	8
College Transition			2	3	
College- Associate's Degree	8			27	3
College- Bachelor's Degree	7		1	6	5
College- Master's Degree					1
College- Semester				41	70
EMCC Badging				3	9
HiSET Prep Math		45	61	74	25
HiSET Prep Reading	6	62	98	115	36
HiSET Prep Science	2	54	94	103	33
HiSET Prep Social Studies	7	65	98	128	37
HiSET Prep Writing	2	41	74	78	37
HiSET/HiSET prep	87	42	2	5	6
HSED awarded from MDOE	1	32	47	57	31
Post-Secondary/College prep	8	24		16	1
SCP Education Hold				9	15
<b>Grand Total</b>	<b>150</b>	<b>405</b>	<b>496</b>	<b>731</b>	<b>337</b>
<b>Total Unique Men Involved</b>	<b>133</b>	<b>192</b>	<b>178</b>	<b>299</b>	<b>174</b>
<b>Total Unique Male Population by Year</b>	<b>3512</b>	<b>3664</b>	<b>3716</b>	<b>3485</b>	<b>2835</b>
<b>% of Unique Male Pop Involved</b>	<b>4%</b>	<b>5%</b>	<b>5%</b>	<b>9%</b>	<b>6%</b>



# Maine Department of Corrections 2020 Year End Report

## Men's Vocational Programming

Successful vocational program completions 2016 through 2020. The numbers are for all Adult Facilities combined for each year.

- 2020 Facilities worked towards ensuring that all vocational programs had standardized curriculum, certificates, apprenticeships and/or college credits as part of completion.

Men's Vocational Program	Successful Completion				
	2016	2017	2018	2019	2020
Agriculture Conservation					4
Auto Body		2			
Auto Mechanics	3	5	9	4	2
Bee Keeping		6	11	24	4
Building Trades	27	28	2	5	6
Business Basics	1	3		1	
Composting			5	2	
Computer Technology	29	1	6	21	33
Culinary Arts	26	17	16	6	4
Electrical		4	5	3	1
Entrepreneurship Basics					4
Flagger Certification			16	3	
Food Preserving Class					7
Graphic Arts	4				
Horticulture	2	4			
Investing Basics					7
Master Gardener			12	17	16
OSHA Certification	26	137	69	14	10
Pesticide Application				1	1
Servsafe Certification		11	87	44	27
Small Engines	39	19	19	13	3
Welding	3	9		1	9
Wood Harvesting 101	15	14	16	6	2
Wood Harvesting 102		4	12	8	
Wood Harvesting CLP			2	4	1
Work Ready	68	112	61	21	21
<b>Grand Total</b>	<b>243</b>	<b>376</b>	<b>348</b>	<b>198</b>	<b>162</b>
<b>Total Unique Men Involved</b>	<b>198</b>	<b>284</b>	<b>273</b>	<b>172</b>	<b>134</b>
<b>Total Unique Male Population by Year</b>	<b>3512</b>	<b>3664</b>	<b>3716</b>	<b>3485</b>	<b>2835</b>
<b>% of Unique Male Pop Involved</b>	<b>6%</b>	<b>8%</b>	<b>7%</b>	<b>5%</b>	<b>5%</b>



# Maine Department of Corrections 2020 Year End Report

## 2.5 Treatment, Educational & Vocational Programming - Women

The programs listed below are the core programming for the adult female DOC facility population. The numbers represent successful program completions 2016 through 2020, by program name, for all adult female population combined. Included are cognitive behavioral treatment programs, outpatient substance use disorder programming, problematic sexual behavior treatment, and domestic violence programming.

Women's Treatment Programming	Successful Completions				
	2016	2017	2018	2019	2020
Anger Management	9	12	9	27	1
Beyond Anger & Violence	16	15	1		
Beyond Trauma	13	32	13	3	
Challenge Program	1			1	
Criminal Addictive Thinking		11	65	54	57
DSAT	47				1
DV Programming	19	12		1	
Healing Trauma				39	42
MAT				32	57
New Freedom		6	16	21	38
Problem Sexual Behavior- Women					1
R.U.L.E.			5	1	4
Recovery Peer Support- Coach	9	1			14
Recovery Peer Support- Participant			17	17	16
SAFE				7	4
CBI-SA	4	24	31	21	19
Co-Dependent No More	42	62	40	37	31
Individual			9	5	6
Living in Balance- Core		63	74	51	11
Living in Balance- Other	9	45	15	1	
Living in Balance- Relapse Prevention		23	26	42	53
Seeking Safety	74	81	47	29	2
Women's Services		34	145	117	84
Thinking for a Change	5				
<b>Total Successful Completions</b>	<b>248</b>	<b>421</b>	<b>513</b>	<b>506</b>	<b>441</b>
<b>Total Unique Women Involved</b>	<b>165</b>	<b>242</b>	<b>232</b>	<b>195</b>	<b>179</b>
<b>Total Unique Female Population by Year</b>	<b>376</b>	<b>404</b>	<b>422</b>	<b>374</b>	<b>272</b>
<b>% of Unique Female Pop Involved</b>	<b>44%</b>	<b>60%</b>	<b>55%</b>	<b>52%</b>	<b>66%</b>





# Maine Department of Corrections 2020 Year End Report

## Substance Use Disorder Programming- Women

Below are statewide women’s core substance use treatment disorder programs, broken out by program name and year. Blank spaces indicate the program did not have participation, was newly initiated, or discontinued. Starting in 2017 substance use programming began being broken out by actual program title completed which resulted in the last year “Outpatient Generic” was used to capture several types of outpatient substance use treatment. Medication Assisted Treatment (MAT) was initiated in July 2019.

Women's SUD Programming	Successful Completions				
	2016	2017	2018	2019	2020
MAT				32	57
CBI-SA	4	24	31	21	19
Co-Dependent No More	42	62	40	37	31
Individual			9	5	6
Living in Balance- Core		63	74	51	11
Living in Balance- Other	9	45	15	1	
Living in Balance- Relapse Prevention		23	26	42	53
Seeking Safety	74	81	47	29	2
Women’s Services		34	145	117	84
<b>Total Successful Completions</b>	<b>129</b>	<b>332</b>	<b>387</b>	<b>335</b>	<b>263</b>
<b>Total Unique Women Involved</b>	<b>107</b>	<b>212</b>	<b>190</b>	<b>163</b>	<b>136</b>
<b>Total Unique Female Population by Year</b>	<b>376</b>	<b>404</b>	<b>422</b>	<b>374</b>	<b>272</b>
<b>% of Unique Female Pop Involved</b>	<b>28%</b>	<b>52%</b>	<b>45%</b>	<b>44%</b>	<b>50%</b>



# Maine Department of Corrections 2020 Year End Report

## Education Programming- Women

- COVID-19 created restrictions related to number of residents served as well as completions due to lockdowns, social distancing, external agencies shutting down, etc.
- Education programs shifted from in-person to computer- and online-based.
  - Technology increases were made across all facilities, which ensured education and vocational programming continued.
  - Received a Mellon Grant which added 180 laptops and 20 COVID carts across facilities
  - Large increase in women’s college semester completions in 2020

Women's Education Programs	Successful Completions				
	2016	2017	2018	2019	2020
Adult Basic Education	7	1			1
College	25	21	20	25	6
College Transition				1	
College- Associate's Degree			4	4	11
College- Bachelor's Degree			1	2	
College- Semester				16	51
HiSET Prep Math		10	6	10	5
HiSET Prep Reading	1	14	14	11	7
HiSET Prep Science		10	10	12	5
HiSET Prep Social Studies		12	12	13	7
HiSET Prep Writing		9	12	16	4
HiSET/HiSET prep	11	5			
HSED awarded from MDOE	2	9	8	11	4
Post-Secondary/College prep	36	17	16	11	23
<b>Total Successful Completions</b>	<b>82</b>	<b>108</b>	<b>103</b>	<b>132</b>	<b>124</b>
<b>Total Unique Women Involved</b>	<b>61</b>	<b>65</b>	<b>53</b>	<b>64</b>	<b>57</b>
<b>Total Unique Female Population by Year</b>	<b>376</b>	<b>404</b>	<b>422</b>	<b>374</b>	<b>272</b>
<b>% of Unique Female Pop Involved</b>	<b>16%</b>	<b>16%</b>	<b>13%</b>	<b>17%</b>	<b>21%</b>



## Maine Department of Corrections 2020 Year End Report

### Women's Vocational Programming

Successful vocational program completions 2016 through 2020. The numbers are for all adult facility women combined for each year.

- Facilities worked towards ensuring that all vocational programs had standardized curriculum, certificates, apprenticeships and/or college credits as part of completion.

Women's Vocational Programs	Successful Completions				
	2016	2017	2018	2019	2020
Computer Coding			1	1	1
Computer Technology	16				
Culinary Arts	12	18	6	49	25
NCCER				7	14
OSHA Certification	1	14	16	8	
Servsafe Certification		10	49	18	21
WCCC Cert. Prod. Tech. Certification				8	1
Work Ready	29	6	42	13	18
<b>Grand Total</b>	<b>58</b>	<b>48</b>	<b>114</b>	<b>104</b>	<b>80</b>
<b>Total Unique Women Involved</b>	<b>49</b>	<b>30</b>	<b>71</b>	<b>76</b>	<b>60</b>
<b>Total Unique Female Population by Year</b>	<b>376</b>	<b>404</b>	<b>422</b>	<b>374</b>	<b>272</b>
<b>% of Unique Female Pop Involved</b>	<b>13%</b>	<b>7%</b>	<b>17%</b>	<b>20%</b>	<b>22%</b>



# Maine Department of Corrections 2020 Year End Report

## 2.6 High School Equivalency Diplomas Earned While Incarcerated

Total high school equivalency diplomas issued by Maine Department of Education during 2020, by Facility and month.

Facility	2020 Jan	2020 Feb	2020 Mar	2020 April	2020 May	2020 Jun	2020 July	2020 Aug	2020 Sept	2020 Oct	2020 Nov	2020 Dec	2020 Total
BCF	0	1	1	0	0	0	0	0	1	0	0	0	3
MCC-M	1	0	0	0	0	0	1	2	1	0	0	0	5
MCC-F	0	0	0	0	0	0	1	1	1	1	0	0	4
MSP	3	0	1	1	0	0	3	0	0	0	0	0	8
MVCF	4	3	0	3	1	0	1	0	0	1	2	0	15
<b>Totals</b>	<b>8</b>	<b>4</b>	<b>2</b>	<b>4</b>	<b>1</b>	<b>0</b>	<b>6</b>	<b>3</b>	<b>3</b>	<b>2</b>	<b>2</b>	<b>0</b>	<b>35</b>

## High School Equivalency Diplomas (HSED)

The table below shows HSEDs issued by the State of Maine Department of Education, separated by facility and completion year.

Facility	2016	2017	2018	2019	2020
BCF	8	3	4	3	3
DCF	7	2	N/A	N/A	N/A
MCC-All	11	12	19	20	9
MSP	30	24	27	19	8
MVCF	22	18	20	19	15
<b>Totals</b>	<b>78</b>	<b>59</b>	<b>70</b>	<b>61</b>	<b>35</b>

## Classroom Observations

During 2019 Department of Corrections initiated education classroom observations at all adult facilities. The observations were implemented to ensure teacher proficiency in the areas of: lesson planning; student engagement/responsiveness; classroom management; and monitoring and assessment. The chart below shows how many observations were conducted by facility. The results demonstrated teachers having high proficiency in both teaching and managing their classrooms. During 2020, due to Covid-19, observations were down, and in person class time limited.

Facility	2019	2020
MCC-M	4	1
MCC-W	2	1
SMWRC	0	0
MVCF	15	6
BCF	0	1
MSP	5	2
<b>Total observations</b>	<b>26</b>	<b>11</b>



# Maine Department of Corrections 2020 Year End Report

## 2.7 College Programming at Maine Department of Corrections

For over 20 years, the Maine Department of Corrections has been providing opportunities for residents to participate in and complete college programming. With over 130 college degrees awarded to residents since 2009, the college program has had a transformative impact on the culture of corrections and in the mindset of residents.

- Through the University of Maine and Community College systems, residents are eligible to earn one-year certificates and Associate’s or a Bachelor’s Degrees in multiple tracks.
- Residents can also seek alternative funding to enroll in Master’s Degree and PhD programs.
- In addition, the Department has partnered with MIT’s Educational Justice Institute to offer an “inside/outside” model of instruction, which allows DOC residents to engage in courses with residents in other facilities and MIT students.
- With 117 college degrees awarded since 2009, the college program has had a transformative impact on the culture of corrections and in the mindset of residents.

Currently, college programming is primarily supported through Second Chance Pell Funding. On December 21, 2020, Congress voted to lift the ban on Pell Grants for people in prison.

College Degree Program	Gender	2009	2011	2013	2016	2018	2019	2020	Total
College- Associate's Degree	F					4	4	11	19
	M	13	7	9	8		26	5	68
College- Bachelor's Degree	F					1	2		3
	M		2	5	7	1	6	5	26
College- Master's Degree	M							1	1
<b>Grand Total</b>		<b>13</b>	<b>9</b>	<b>14</b>	<b>15</b>	<b>6</b>	<b>38</b>	<b>22</b>	<b>117</b>

### Return to Custody Information

MDOC tracked all residents released from 2010 – 2020 who completed either an Associate’s Degree or Bachelor’s Degree.

Since 2010, there have been:

- 29 male releases with 2 returns (6.9% return rate)
- 10 female releases with 0 returns (0% return rate)
- 39 releases since 2010 and an overall return rate of 5.1%.



# Maine Department of Corrections 2020 Year End Report

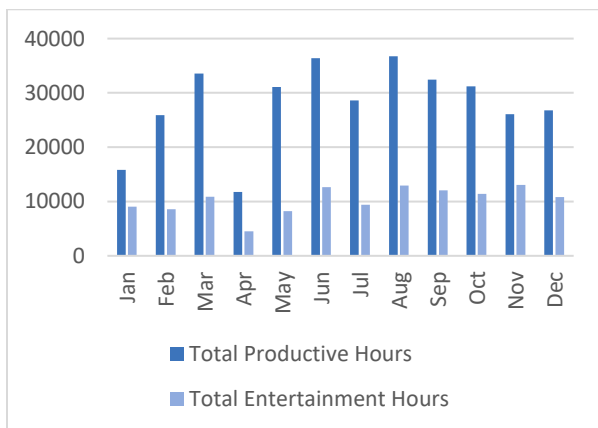
## 2.8 Programming Tablets

Throughout 2019 the Department expanded the use of tablet technology to support increased education and vocational programming in more facilities. Incorporating the use of tablets in the delivery of key programming supports the mission of the Department and two of our three strategic priorities: Program Expansion and Use of Technology.

The tablets are corrections grade and operate on a closed, managed network that allows residents access to thousands of hours of free academic, vocational, life skills, and therapeutic programming designed for all learning levels. Currently there are over 750 tablets available to residents at specific levels in the following facilities: Maine State Prison, Maine Correctional Center, and Mountain View Correctional Facility.

2020 Tablet Data Points	Unique Active Residents	Total Productive Hours	Total Entertainment Hours	Total Hours	Average Hours per Resident	% of Total Hours that were Productive
Jan	1,173	15,852	9,059	24,910	21.2	64%
Feb	1,179	25,900	8,561	34,492	29.26	75%
Mar	1,171	33,553	10,865	44,418	37.9	76%
Apr	998	11,747	4,520	16,267	16.3	72%
May	1,019	31,089	8,244	39,333	38.6	79%
Jun	1,000	36,400	12,631	49,031	49.03	74%
Jul	1,005	28,617	9,386	38,003	37.8	75%
Aug	1,040	36,761	12,958	49,720	47.8	74%
Sep	1,047	32,432	12,082	44,514	42.5	73%
Oct	1,032	31,210	11,390	42,600	41.3	73%
Nov	972	26,074	13,065	39,139	40.3	67%
Dec	960	26,807	10,789	37,596	39.2	71%
2020 Average	1,049	28,036	10,295	38,335	36.8	73%

On average in 2020, residents spent 73% of the hours on a tablet productively, and 27% for entertainment.



Number of Courses Completed in 2020 by Type

Job Skills	16,811	Recovery	2,000
Reentry	5,259	Job Search	1,396
GED	4,923	Reading	1,060
Adult Basic Education	4,598	ESL	827
Career Exploration	3,216	College	824
Making Changes	3,146	Finance	472
Spirituality	2,963	Inspiration	346
Legal	2,713	Documentaries	118
Health	2,422	Lectures	13



### 3.0 Classification

#### 3.1 Admissions & Releases

Admissions and Releases Overtime

	Average Monthly Gain						
	2015	2016	2017	2018	2019	2020	All Years
<b>All Population</b>	4.92	7.25	1.67	-4.08	-14.75	-29.50	-5.75
<b>Men</b>	0.83	5.33	1.25	-6.17	-13.75	-28.42	-6.82
<b>Women</b>	4.08	2.25	0.42	2	-1.0	-1.08	1.11

#### Admissions & Releases

New Crime and Probation Returns, and Straight and Probation releases, by Gender

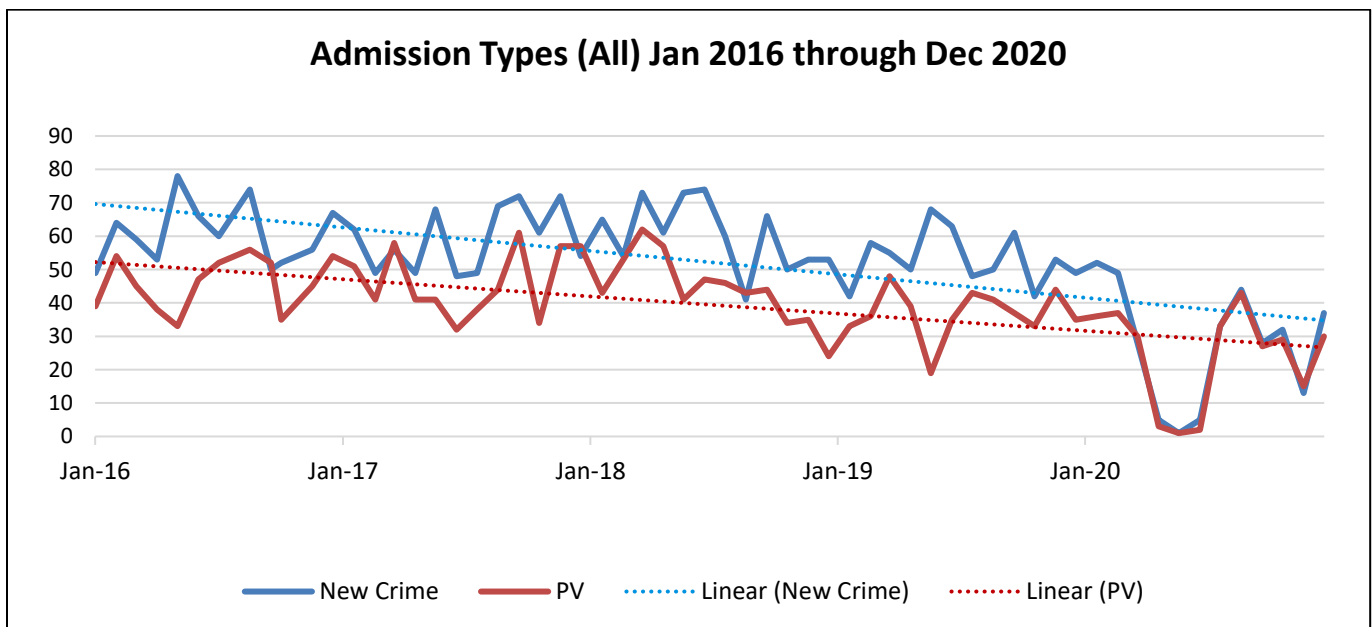
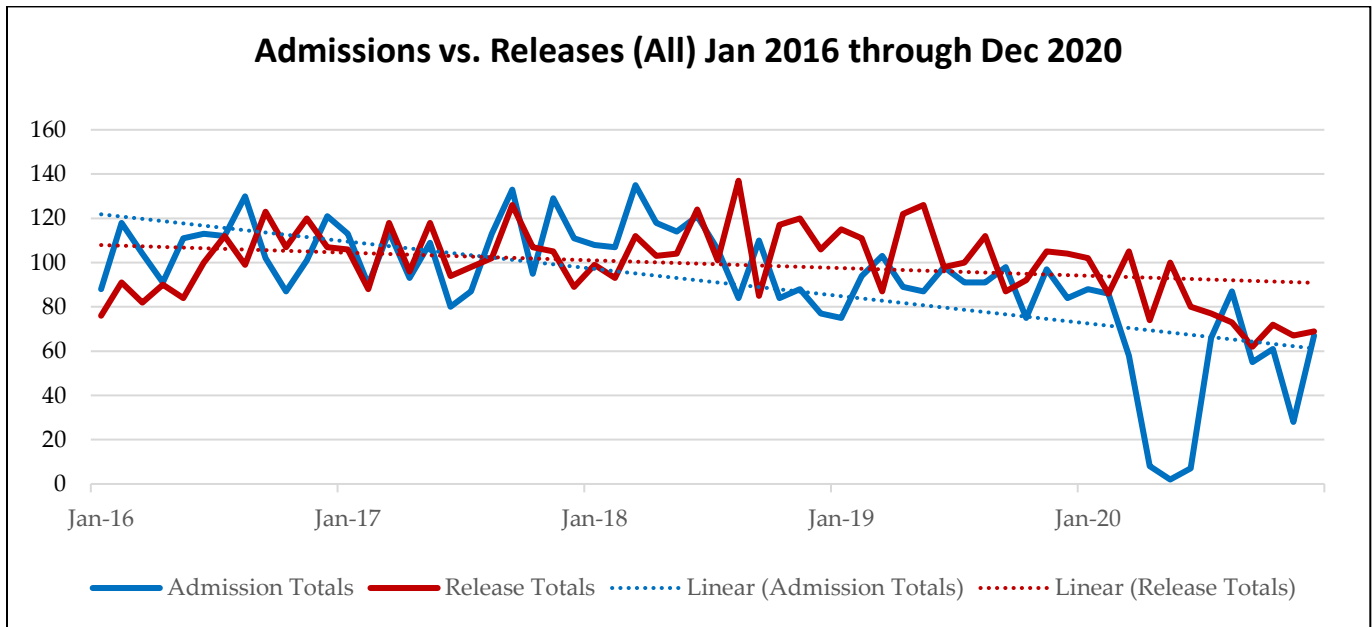
		2015	2016	2017	2018	2019	2020
<b>Men</b>	<i>New Crime Admissions</i>	563	635	613	687	558	299
	<i>Probation Violation Admissions</i>	425	467	479	457	379	265
	<b>Admission Totals</b>	<b>988</b>	<b>1102</b>	<b>1092</b>	<b>1144</b>	<b>937</b>	<b>564</b>
	<i>Straight Releases</i>	450	496	525	623	560	468
	<i>Probation Releases</i>	528	542	552	608	542	467
	<b>Release Totals</b>	<b>978</b>	<b>1038</b>	<b>1077</b>	<b>1231</b>	<b>1102</b>	<b>935</b>
<b>Women</b>	<i>New Crime Admissions</i>	75	93	99	100	81	42
	<i>Probation Violation Admissions</i>	84	87	76	102	64	42
	<b>Admission Totals</b>	<b>159</b>	<b>180</b>	<b>175</b>	<b>202</b>	<b>145</b>	<b>84</b>
	<i>Straight Releases</i>	58	67	81	88	69	52
	<i>Probation Releases</i>	52	86	89	97	88	44
	<b>Release Totals</b>	<b>110</b>	<b>153</b>	<b>170</b>	<b>185</b>	<b>157</b>	<b>96</b>
<b>All Population</b>	<i>New Crime Admissions</i>	638	728	709	765	639	341
	<i>Probation Violation Admissions</i>	509	550	555	562	443	307
	<b>Admission Totals</b>	<b>1147</b>	<b>1278</b>	<b>1267</b>	<b>1327</b>	<b>1082</b>	<b>648</b>
	<i>Straight Releases</i>	508	563	607	699	629	520
	<i>Probation Releases</i>	580	628	641	717	630	511
	<b>Release Totals</b>	<b>1088</b>	<b>1191</b>	<b>1247</b>	<b>1416</b>	<b>1259</b>	<b>1031</b>



# Maine Department of Corrections 2020 Year End Report

## Admissions and Discharges

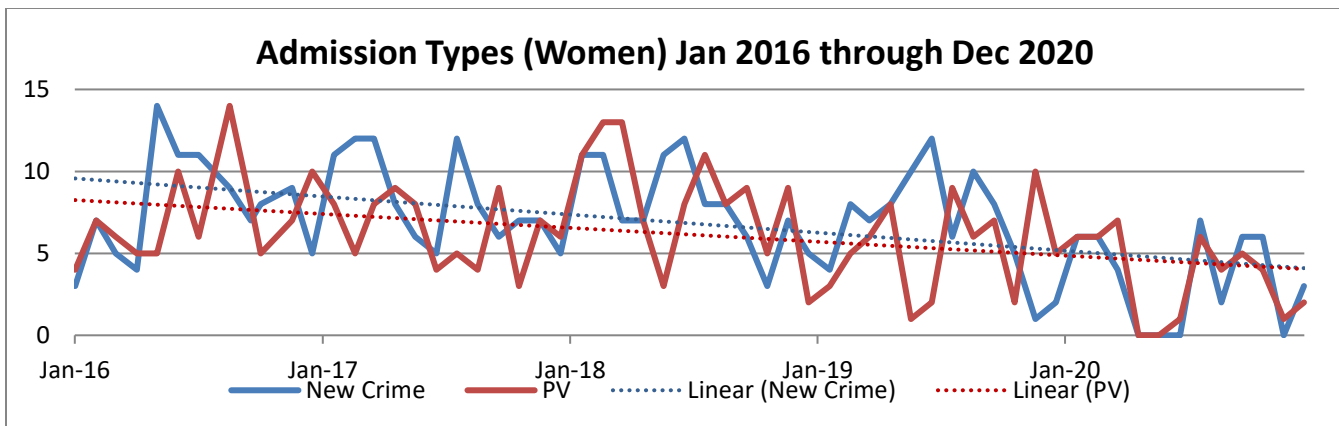
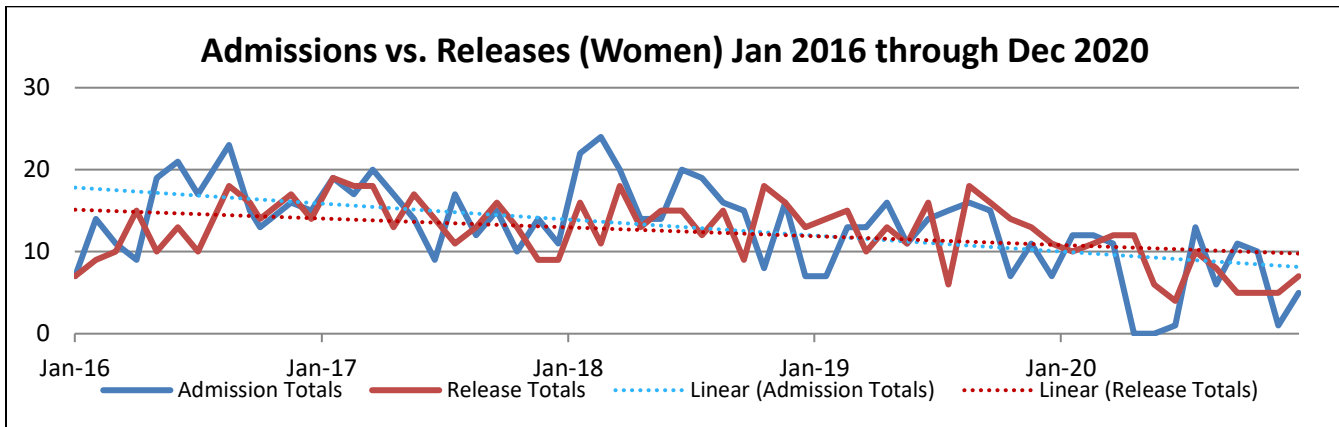
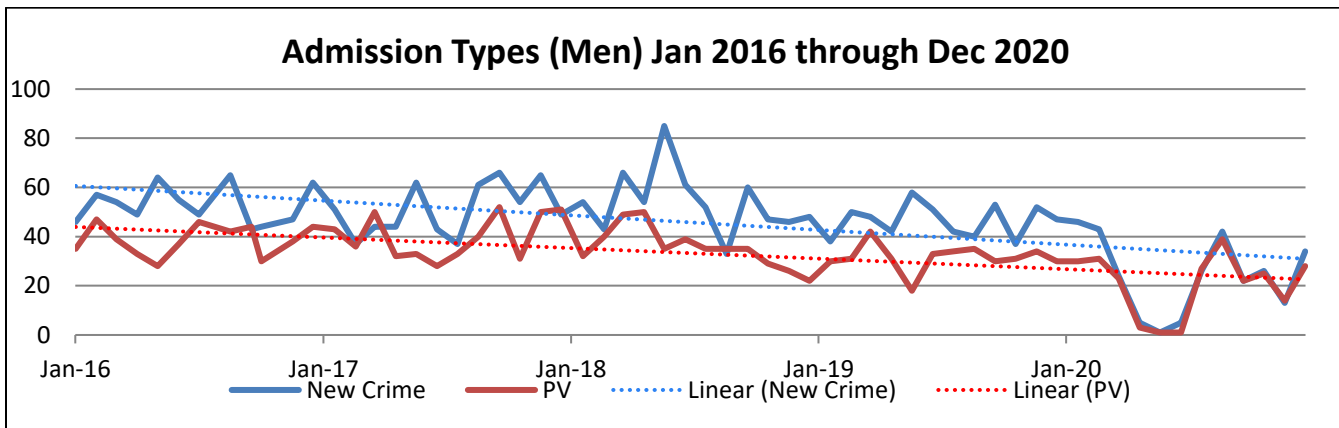
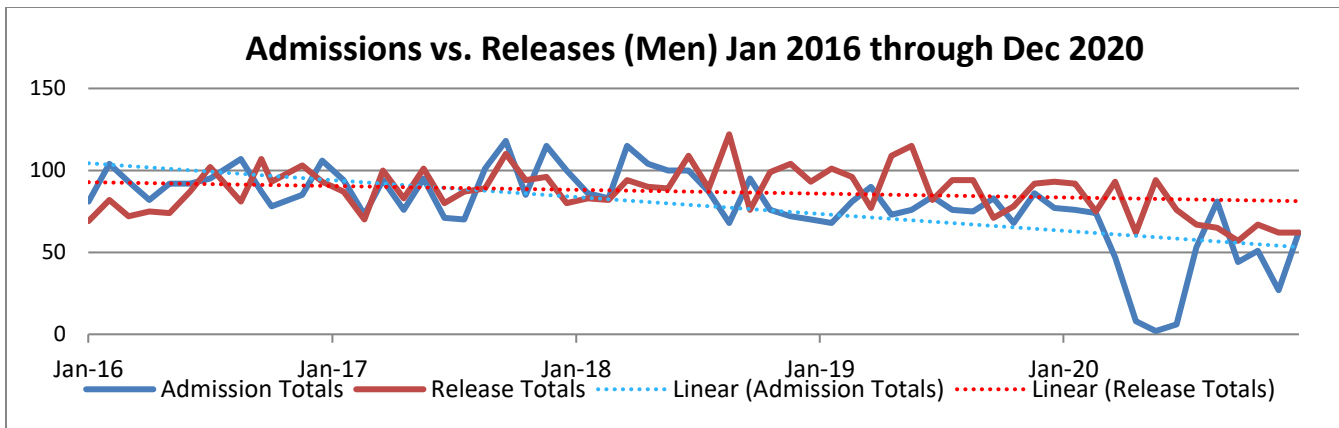
The next several charts represent admissions and releases, types of admissions, and are broken out by all DOC, men, and women over the five-year period of 2016-2020. During 2020 admissions fell dramatically due to the pandemic which is reflected in the solid blue line “dips” in 2020.







# Maine Department of Corrections 2020 Year End Report





# Maine Department of Corrections 2020 Year End Report

## 3.2 New Admissions by Crime Group - Men

The table below shows new admissions to a DOC Adult Correctional Facility, by controlling sentences for new crimes, by year, and percent represented of total admitted. When looking at percentage of those admitted by crime groupings over the 5-year period, there is minimal change with the exception of 2020 having roughly half the admissions due to COVID-19 facility lockdowns minimizing admissions.

Crime Group Men	2016	%	2017	%	2018	%	2019	%	2020	%
Animal Welfare	0	0.00%	0	0.00%	0	0.00%	0	0.00%	1	0.34%
Arson	10	1.54%	9	1.45%	6	0.93%	7	1.27%	4	1.36%
Assault/Threaten	88	13.56%	103	16.56%	106	16.51%	96	17.45%	58	19.66%
Bail	6	0.92%	12	1.93%	10	1.56%	6	1.09%	4	1.36%
Burglary	49	7.55%	38	6.11%	47	7.32%	39	7.09%	24	8.14%
Conspiracy	4	0.62%	8	1.29%	7	1.09%	2	0.36%	2	0.68%
Drugs- Furnishing	178	27.43%	154	24.76%	171	26.64%	146	26.55%	89	30.17%
Drugs- Possession	16	2.47%	16	2.57%	18	2.80%	13	2.36%	13	4.41%
Drugs- Meth Lab	7	1.08%	7	1.13%	5	0.78%	4	0.73%	0	0.00%
Drugs- Illegal Importing	2	0.31%	3	0.48%	2	0.31%	2	0.36%	0	0.00%
Forgery	7	1.08%	6	0.96%	6	0.93%	6	1.09%	1	0.34%
Kidnapping	2	0.31%	2	0.32%	2	0.31%	2	0.36%	1	0.34%
Manslaughter	6	0.92%	10	1.61%	13	2.02%	5	0.91%	7	2.37%
Murder	10	1.54%	11	1.77%	9	1.40%	9	1.64%	9	3.05%
Offense/Family	0	0.00%	0	0.00%	0	0.00%	0	0.00%	1	0.34%
OUI	17	2.62%	14	2.25%	11	1.71%	8	1.45%	3	1.02%
Property Damage	4	0.62%	4	0.64%	4	0.62%	2	0.36%	1	0.34%
Public Admin	9	1.39%	7	1.13%	12	1.87%	15	2.73%	4	1.36%
Robbery	38	5.86%	36	5.79%	19	2.96%	22	4.00%	12	4.07%
Sex Offenses	64	9.86%	56	9.00%	53	8.26%	45	8.18%	16	5.42%
Stalking/Terrorize	8	1.23%	8	1.29%	4	0.62%	11	2.00%	2	0.68%
Theft	60	9.24%	58	9.32%	69	10.75%	52	9.45%	20	6.78%
Traffic Criminal	58	8.94%	53	8.52%	65	10.12%	51	9.27%	21	7.12%
Weapons	6	0.92%	7	1.13%	3	0.47%	7	1.27%	1	0.34%
<b>Grand Total</b>	<b>649</b>	<b>100%</b>	<b>622</b>	<b>100%</b>	<b>642</b>	<b>100%</b>	<b>550</b>	<b>100%</b>	<b>295</b>	<b>100.00%</b>



# Maine Department of Corrections 2020 Year End Report

## 3.3 New Admissions by Crime Group - Women

The table below shows new admissions to a DOC Adult Correctional Facility, by controlling sentences for new crimes, by year, and percent represented of total admitted. When looking at percentage of those admitted by crime groupings over the 5-year period, the only notable change is in “Drug-Furnishing” category. In 2016 just over a third of all new admissions were attributed to furnishing drugs. 2017-2019 shows that number increasing to around half of all admissions for new crimes being attributed to furnishing drugs. In 2020, it rose to almost 56%.

Crime Group Women	2016	%	2017	%	2018	%	2019	%	2020	%
Arson	1	1.04%	0	0.00%	1	1.01%	0	0.00%	0	0.00%
Assault/Threaten	6	6.25%	8	8.08%	3	3.03%	6	7.32%	2	4.65%
Bail	2	2.08%	0	0.00%	0	0.00%	0	0.00%	0	0.00%
Burglary	3	3.13%	3	3.03%	6	6.06%	0	0.00%	1	2.33%
Conspiracy	1	1.04%	1	1.01%	1	1.01%	1	1.22%	2	4.65%
Drugs- Furnishing	33	34.38%	50	50.51%	47	47.47%	40	48.78%	24	55.81%
Drugs- Possession	4	4.17%	4	4.04%	1	1.01%	6	7.32%	1	2.33%
Drugs- Meth Lab	2	2.08%	2	2.02%	3	3.03%	1	1.22%	0	0.00%
Forgery	3	3.13%	3	3.03%	1	1.01%	2	2.44%	3	6.98%
Kidnapping	0	0.00%	1	1.01%	1	1.01%	0	0.00%	0	0.00%
Manslaughter	1	1.04%	4	4.04%	1	1.01%	2	2.44%	1	2.33%
Murder	0	0.00%	0	0.00%	1	1.01%	2	2.44%	2	4.65%
OUI	2	2.08%	0	0.00%	1	1.01%	4	4.88%	0	0.00%
Property Damage	0	0.00%	0	0.00%	0	0.00%	0	0.00%	0	0.00%
Public Admin	2	2.08%	2	2.02%	2	2.02%	2	2.44%	1	2.33%
Robbery	11	11.46%	6	6.06%	0	0.00%	2	2.44%	0	0.00%
Sex Offenses	3	3.13%	3	3.03%	1	1.01%	5	6.10%	0	0.00%
Stalking/Terrorize	0	0.00%	0	0.00%	1	1.01%	0	0.00%	2	4.65%
Theft	19	19.79%	10	10.10%	20	20.20%	7	8.54%	2	4.65%
Traffic Criminal	2	2.08%	2	2.02%	8	8.08%	2	2.44%	2	4.65%
Weapons	1	1.04%	0	0.00%	0	0.00%	0	0.00%	0	0.00%
<b>Grand Total</b>	<b>96</b>	<b>100.00%</b>	<b>99</b>	<b>100.00%</b>	<b>99</b>	<b>100.00%</b>	<b>82</b>	<b>100.00%</b>	<b>43</b>	<b>100.00%</b>



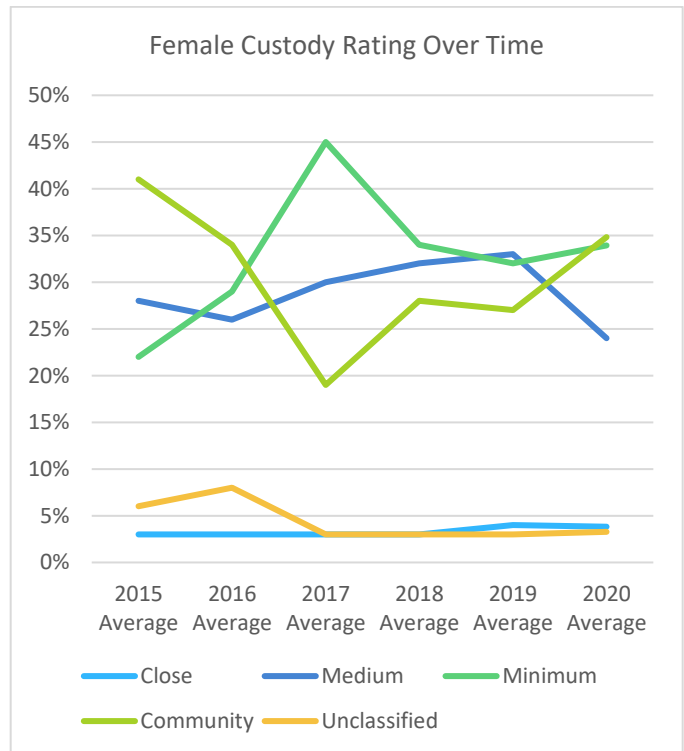
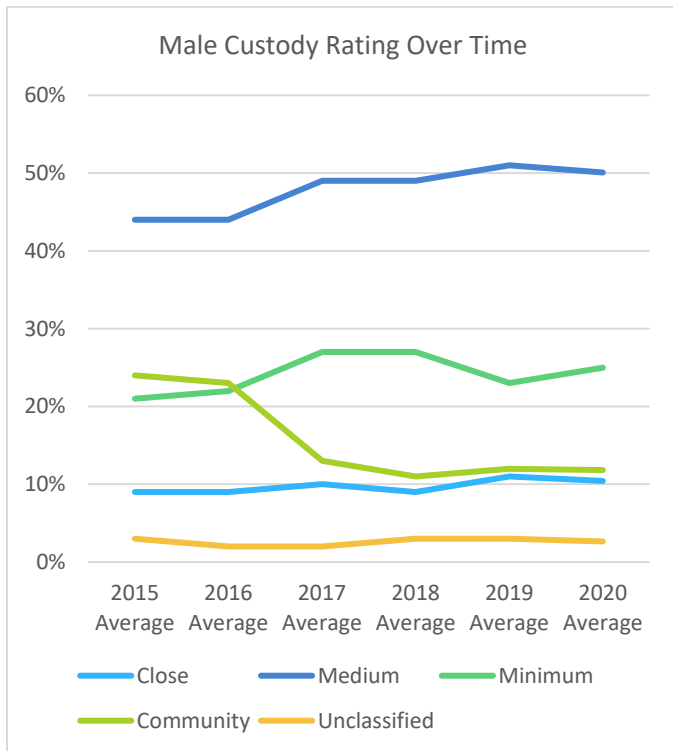
# Maine Department of Corrections 2020 Year End Report

## 3.4 Current Custody Ratings

### Custody Rating Overtime

		2015 Average	2016 Average	2017 Average	2018 Average	2019 Average	2020 Average
Male	Close	9%	9%	10%	9%	11%	10%
	Medium	44%	44%	49%	49%	51%	50%
	Minimum	21%	22%	27%	27%	23%	25%
	Community	24%	23%	13%	11%	12%	12%
	Unclassified	3%	2%	2%	3%	3%	3%
	<b>Grand Total</b>	<b>100%</b>	<b>100%</b>	<b>100%</b>	<b>100%</b>	<b>100%</b>	<b>100%</b>

Female	Close	3%	3%	3%	3%	4%	4%
	Medium	28%	26%	30%	32%	33%	24%
	Minimum	22%	29%	45%	34%	32%	34%
	Community	41%	34%	19%	28%	27%	35%
	Unclassified	6%	8%	3%	3%	3%	3%
	<b>Grand Total</b>	<b>100%</b>	<b>100%</b>	<b>100%</b>	<b>100%</b>	<b>100%</b>	<b>100%</b>





# Maine Department of Corrections 2020 Year End Report

## 3.5 Facility Transfers Number of Transfers between Facilities

Monthly Transfer information is derived from the transfer screen within CORIS. Transfers are totaled by year and tracked below.

Transfer from Location	Transfer to Location	2015	2016	2017	2018	2019	2020
Bolduc Correctional Facility	DCF	9	1	-	-	-	-
	MCC	2	1	1	2	1	3
	MSP	66	89	74	65	66	38
	MVCF	3	6	7	4	3	3
Downeast Correctional Facility	BCF	23	3	9	5	-	-
	MCC	3	-	11	5	-	-
	MSP	23	18	16	9	-	-
	MVCF	7	12	10	48	-	-
Maine Correctional Center	BCF	158	178	185	141	150	28
	DCF	102	154	42	-	-	-
	MSP	203	240	328	358	267	52
	MVCF	185	238	306	288	342	220
Maine State Prison	BCF	66	69	84	106	90	120
	DCF	21	22	12	-	-	-
	MCC	41	34	47	72	49	8
	MVCF	33	86	81	140	53	29
Mountain View Correctional Facility	BCF	-	2	18	10	7	2
	DCF	-	-	9	8	-	-
	MCC	-	-	12	5	28	42
	MSP	-	16	59	70	55	11
Totals		945	1169	1311	1336	1111	556



# Maine Department of Corrections 2020 Year End Report

## Return to Higher Custody

Return numbers are for the months of January to December 2020. Transfer to higher custody are listed based on the incident reason connected to the date of transfer. For any transfer that does not have a related incident, the transfer reason is listed towards the bottom of the section for each facility.

Facility	Incident Reason	December 2019	January 2020	February 2020	March 2020	April 2020	May 2020	June 2020	July 2020	August 200	September 2020	October 2020	November 2020	December 2020	
BCF	Assault-Cl. on Cl. w/out Ser. Injury							1					1		
	Contraband Found - Alcohol							2							
	Contraband Found - Cell Phone(s)														
	Contraband Found - Drugs			1										1	
	Contraband Found - Medication														
	Drug Test - Positive		2	1						2				2	
	Failure to Comply/Program										1				
	Fight								1						
	Theft														
	<i>Below are transfer reasons for those transfers without a related incident</i>														
		Change of Custody Level			2			1							
		Higher Security	1	1			1			1					
		Medical	1		2	1		3		2		3	3		1
		Population Distribution				2									
		Security		1								1			
	<b>BCF Totals</b>	<b>1</b>	<b>4</b>	<b>6</b>	<b>3</b>	<b>1</b>	<b>4</b>	<b>4</b>	<b>3</b>	<b>2</b>	<b>5</b>	<b>3</b>	<b>1</b>	<b>4</b>	
MVCF	Assault-Client on Cl. w/ Ser. Injury													1	
	Assault-Client on Cl. w/out Ser. Injury		2		1										
	Contraband Found - Drugs	1		1											
	Damage to Property				1										
	DEI			1											
	Drug Test - Positive				2										
	Failure to Comply/Program									1					
	Major Disturbance	1			1										
	Suicide Behavior, No Injury														
	Self-Inflicted Injury									1					
	Tattooing														
	Weapon(s) Involved/Seized														
	<i>Below are transfer reasons for those transfers without a related incident</i>														
		Change of Custody Level													
		Medical						1							
	Population Distribution	3	16	1	3				1		15				
	Security		1							1				2	
	<b>MVCF Totals</b>	<b>5</b>	<b>19</b>	<b>3</b>	<b>8</b>	<b>0</b>	<b>1</b>	<b>0</b>	<b>1</b>	<b>3</b>	<b>15</b>	<b>0</b>	<b>0</b>	<b>3</b>	



# Maine Department of Corrections 2020 Year End Report

## 3.6 SCCP Cases by Month

“SCCP Community Pop” is the current DOC population participating in the SCCP program. “SCCP Placements” are new placements into the community on SCCP status and “SCCP Violations” are those returning to a secure DOC facility from the community who have violated the conditions of the SCCP program.

The charts below show the placements, completions and violations of SCCP, as well as the census at the end of each month for 2020.

2020 Totals	Males	Female
Placements	100	68
Completions	88	47
Violations	6	13

Males	2020											
	Jan	Feb	Mar	Apr	May	Jun	Jul	Aug	Sep	Oct	Nov	Dec
End of Previous Month Census	10	7	8	43	40	38	37	32	36	31	24	21
SCCP Placements	1	3	37	13	10	7	8	10	5	3	3	0
SCCP Completions	3	2	2	15	12	7	12	4	10	10	6	5
Violations (return to custody)	1	0	0	1	0	1	1	2	0	0	0	0
End of Month SCCP Census	7	8	43	40	38	37	32	36	31	24	21	16

Females	2020											
	Jan	Feb	Mar	Apr	May	Jun	Jul	Aug	Sep	Oct	Nov	Dec
End of Previous Month Census	12	12	15	20	29	30	25	18	18	15	16	17
SCCP Placements	4	5	11	18	4	3	1	5	5	4	4	4
SCCP Completions	3	2	1	6	3	6	7	5	7	3	3	1
Violations (return to custody)	1	0	5	3	0	2	1	0	1	0	0	0
End of Month SCCP Census	12	15	20	29	30	25	18	18	15	16	17	20

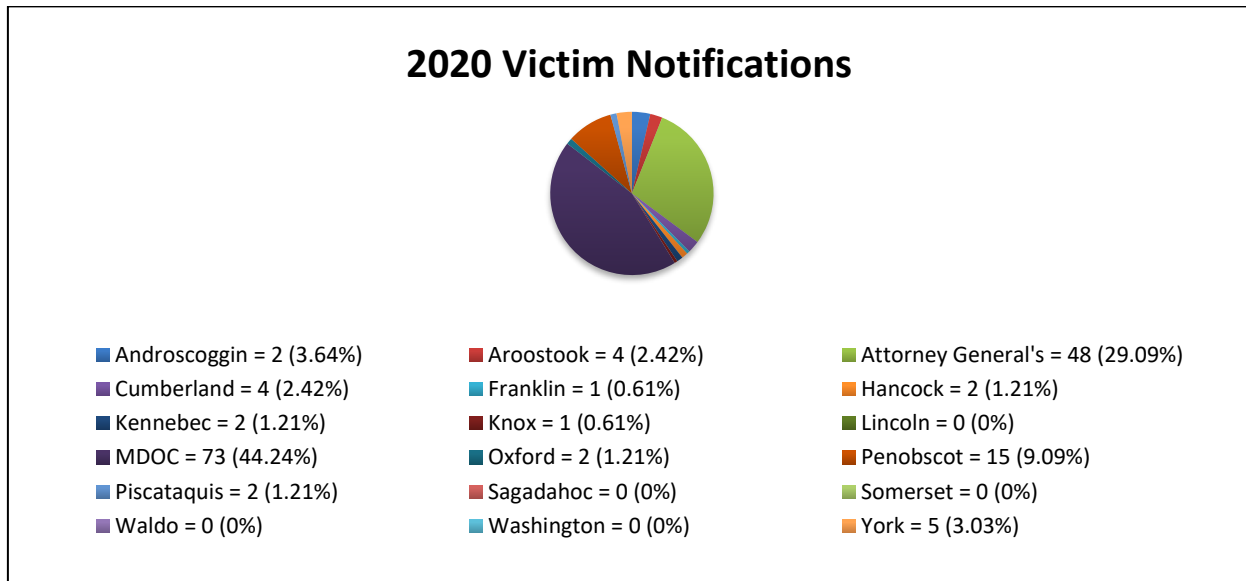
- ❖ 135 (71%) of the 190 clients participating in SCCP during 2020 successfully completed SCCP.
- ❖ Only 19 (10%) of clients participating in SCCP during 2020 violated their SCCP resulting in a return to incarceration.
- ❖ The other 36 (19%) were still active in SCCP at the end of 2020.



## 4.0 Office of Victim Services

The MDOC OVS is required to ensure that victims who request notice of release receive it according to Maine Criminal Statutes 17-A §2106 “Notification of defendant’s release or escape”. MDOC polices were formed outlining preferred practice. The Statute requires victims to submit a Victim Notification Request with the office of the attorney for the State or directly to the MDOC in order to receive notification of release. Once a Victim Notification Request is filed, the victim must receive notice of the resident’s unconditional release and discharge from institutional confinement upon the expiration of the sentence or upon release from commitment under Title 15, section 101-D or upon discharge under Title 15, section 104-A and must receive notification of any conditional release of the resident from institutional confinement, including probation, supervised release for people with problem sexual behavior, parole, furlough, work release, funeral or deathbed visit, supervised community confinement, home release monitoring or similar program, administrative release or release under Title 15, section 104-A; and must receive notification of the residents escape.

In 2020, a total of 165 victims submitted Victim Notification Requests to the MDOC OVS. The chart below indicates which agency assisted the victim in submitting the Victim Notification Request with the MDOC OVS. The MDOC OVS assisted 73 victims directly to submit Victim Notification Requests totaling 44.24% of the overall requests for 2020. Currently, 30.44% of all residents have a victim notification request associated to their case.



In 2020 the MDOC OVS attempted to make contact with victims requesting notification in 632 residents’ cases resulting in 2314 contacts with victims throughout the year in attempts to ensure rights are met regarding victim notification of a resident’s release according to policy and statute.

The MDOC OVS assists victims who are being harassed by persons in the care or custody of the MDOC with obtaining protection from that harassment. The OVS assisted 7 victims in 2020.

The OVS attempted contact with victims on 7 furlough cases. This included 6 letters sent to victims regarding Residents furlough application in addition to multiple phone contacts in order to provide additional information to the victim pertaining to the furlough requests in hopes to obtain victim input into the furlough investigation process. This resulted in 3 victim responses.





# Maine Department of Corrections 2020 Year End Report

The OVS reviewed over 178 Supervised Community Confinement Program (SCCP) applications. 67 victims were contacted regarding SCCP applications, resulting in 29 responses from the victims providing input into the SCCP process.

The OVS tracked the releases of 80 residents with problem sexual behavior. 109 victims were contacted regarding the releases of residents with problem sexual behavior. Of those victims notified, the OVS organized and facilitated 5 safety plan meetings for those victims of sexual assault requesting a safety plan meeting.

The OVS tracked the releases of 72 residents with domestic violence history. 65 victims were contacted regarding the releases of residents with domestic violence history. Of those victims notified, the OVS organized and facilitated 12 safety plan meetings for those victims of domestic violence requesting a safety plan meeting.

The OVS also offers immediate notification to victims who have filed a notification request in cases where a resident has applied for a funeral, death bed visit, escaped, or the death of a resident. In 2020, there were 32 funeral or death bed visit requests resulting in 9 contacts to victims. 7 victims were contacted in regard to resident deaths. There were no contacts made regarding escapes.

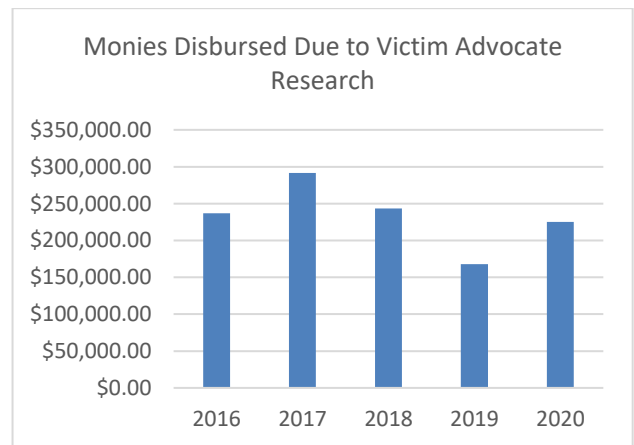
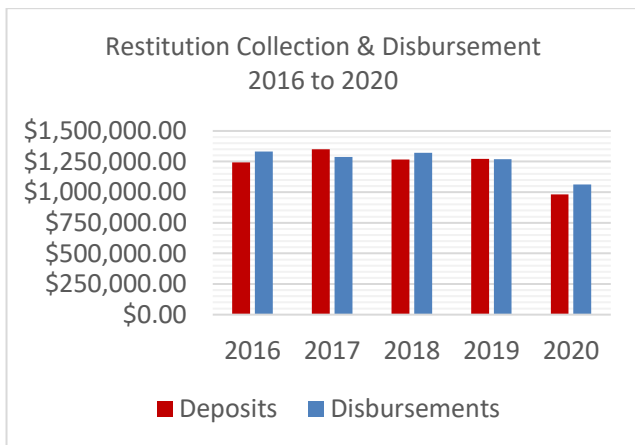
In 2020 the OVS reviewed 102 media requests and contacted 57 victims regarding the potential media coverage in order to obtain information regarding potential negative impact on the victim.

The OVS assisted victims with restitution in which they are to receive per Court order for losses they have incurred. OVS provided information and resources related to these restitution cases in which the MDOC is responsible for the collection of such restitution either through Probation, at the facilities or through the Maine Revenue Service. The OVS acts as a liaison between the victim and Probation and Parole, District Attorney’s Office and the Courts in order to provide resources, information and options for the victim to obtain their restitution while advocating for victims and advising victims of their rights.

OVS research assisted the department to release over \$225,302.69 to victims that otherwise could not have been disbursed prior to the research for multiple reasons. The MDOC disbursed a total of \$1,061,758.12 in restitution to victims. In 2020 the OVS victim advocate reviewed 1262 client’s restitution cases which included 2033 contacts with victims, collateral contacts researching the case, and connecting with the Court and District Attorney’s Office staff in order to assist crime victims.

The OVS also provides guidance as needed to Probation and facilities regarding restitution issues that arise. Assistance/guidance/training was provided to DA advocates 32 times, to facilities 17 times and to probation 81 times by the OVS.

Assistance is also provided to the Courts and District Attorney’s Office in order to request Motions to Enforce and/or Orders to Enforce to be filed on inactive MDOC dockets according statute once the client is no longer in the care or custody of the DOC. In 2020, the OVS sent 269 Motions to Enforce requests and 37 straight release notices to the District Attorney’s offices regarding clients/residents still owing a restitution balance.

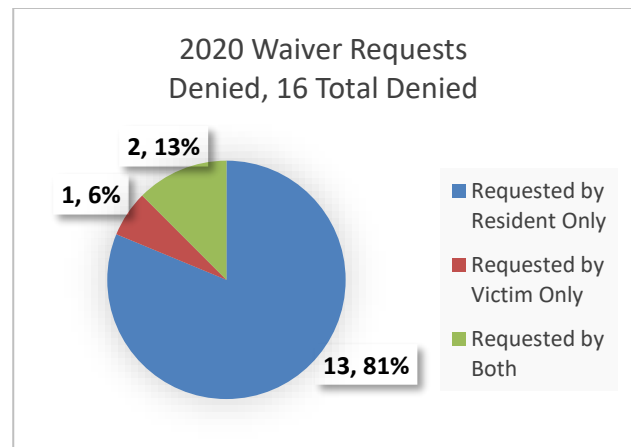
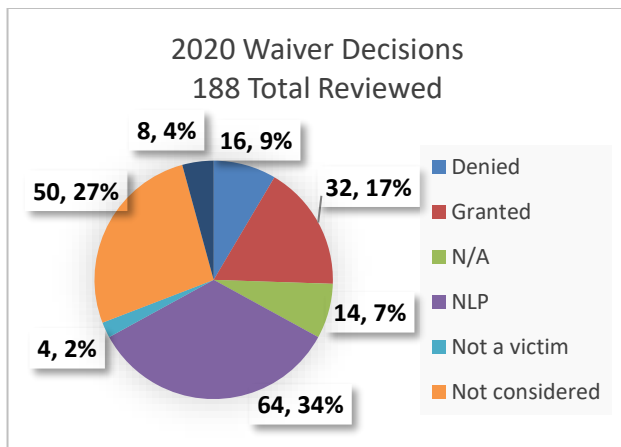




## Maine Department of Corrections 2020 Year End Report

The OVS assisted in the revision and implementation of policy 6.3, contact with victims. The OVS continued to assist MDOC staff at MDOC facilities providing ongoing support regarding the contact with victim's policy.

According to policy 6.3, contact with victims, waiver requests for contact are reviewed and approved by the Commissioner, or designee. The Director of Victim Services reviews all waiver requests as the Commissioner's designee. In 2020, 188 waiver requests were researched and reviewed by the OVS. The charts below outline the waiver decisions from 2020. Some cases required multiple waiver reviews. For purposes of the charts below, a resident who requested contact with each individual victim multiple times in calendar year 2020 was counted as 1 decision. Of the total decisions, 16 waiver requests were denied. Of those 16 waivers, 13 cases or 81.25% did not include a request from the victim for contact and is a factor usually forgotten by many but is of utmost importance to victim services.



The OVS is responsible for the certification of the Batterer Intervention Programs in the State of Maine. In 2021 the Batterer Intervention Program Annual report and statistics will be provided to the Legislature containing information regarding the 2020 monitoring, certification, and the number of offenders required to attend the Certified Batterer Intervention Programs "CBIP" in the Communities as a condition of Probation. The OVS worked in collaboration with the Maine Coalition to End Domestic Violence, who monitored the CBIP across the State to ensure compliance with the standards according to Public Law Chapter 431, "An Act to Enhance Maine's Response to Domestic Violence".

OVS participates in several statewide stakeholder commissions, panels, and other board and association memberships in order to be a voice for victims and an information source regarding the rights of victims. Additionally, presentations are made regularly in order to promote victim services and educate the MDOC and other stakeholders across regarding victims rights and statutes, the victim services offered at the MDOC, and policies and procedures pertaining to such. The OVS completed 11 presentations and trainings in 2020.

The OVS is committed to assisting crime victims and assuring their rights are met, information and resources are provided as appropriate. For further information please don't hesitate to contact us at 800-968-6909.





Maine Department of Corrections  
Correctional Programming Division  
25 Tyson Drive  
Augusta, ME 04330  
Phone (207) 287-2711  
Fax (207) 287-4370  
<http://www.maine.gov/corrections>

The mission of the Department of Corrections is to reduce the likelihood that juvenile and adult offenders will re-offend, by providing practices, programs and services which are evidence-based, and which hold the offenders accountable.