

2019 Year End

MDOC Adult Data Report



MDOC Data Team

This document contains key adult correctional data points to assist management and staff in making evidence-based decisions.

Ryan Thornell, Ph.D., Deputy Commissioner
Maine Department of Corrections
Correctional Programming Division
25 Tyson Drive
State House Station 111
Augusta Maine 04333-0111
207-287-2711

2/6/2020



Table of Contents

1.0 Population & Demographics	3
1.2 Population Demographics	3
1.3 Length of Completed Stay	4
1.4 Restrictive Housing Population (RH)	4
1.5 Intensive Mental Health Unit Average Population	5
2.0 Correctional Programming	6
2.1 Correctional Program Fidelity	6
2.2 Case Management	7
Case Planning Improvement Statistics	8
2.3 Medication Assisted Treatment (MAT) Initiative	9
Treatment, Educational & Vocational Programming - Men	10
2.4 Treatment, Educational & Vocational Programming - Women	14
2.5 High School Equivalency Diplomas Earned While Incarcerated	17
2.6 College Programming at Maine Department of Corrections	18
2.7 Programming Tablets	19
3.0 Classification	20
3.1 Admissions & Releases	20
3.2 New Admissions by Crime Group - Men	24
3.4 Facility Transfers	27
Number of Transfers between Facilities	27
Return to Higher Custody	28
3.5 SCCP Cases by Month	29
Office of Victim Services	30



1.0 Population & Demographics

Average Daily Population (ADP) The ADP has changed significantly over the last five years. While seeing the lowest ADP in the first of the five-year period (2015) and the highest in 2018, there was a significant decrease during 2019. From 2015 to 2019, there was an increase of 114 male clients (5.8%). In comparison, from the five year high for men in 2018 of 2,208, ADP dropped 142 to 2,066 in 2019. Similarly, the women’s ADP increased by 29 over five years (16%) but saw a high in 2018 of 236 before dropping in 2019 to 210.

	Male					Female				
	2015	2016	2017	2018	2019	2015	2016	2017	2018	2019
January	1,997	1,892	2,135	2,186	2,143	157	199	229	227	225
February	1,978	1,917	2,144	2,189	2,117	163	200	224	236	218
March	1,974	1,932	2,170	2,206	2,132	171	205	224	240	211
April	1,988	1,949	2,150	2,226	2,109	169	200	229	233	213
May	1,979	1,967	2,143	2,237	2,070	177	200	228	230	211
June	1,973	1,990	2,126	2,245	2,058	182	204	224	234	211
July	1,951	1,995	2,118	2,228	2,042	183	209	225	240	211
August	1,939	2,021	2,120	2,211	2,028	189	223	227	239	214
September	1,919	2,049	2,140	2,202	2,025	190	221	225	244	210
October	1,908	2,097	2,151	2,202	2,032	193	223	226	240	208
November	1,916	2,122	2,163	2,188	2,018	200	223	223	234	203
December	1,908	2,128	2,189	2,174	2,015	198	226	225	234	190
Aver Pop	1,952	2,005	2,146	2,208	2,066	181	211	226	236	210

1.2 Population Demographics

Average Age

	M	F
2015	38	36
2016	38	35
2017	38	36
2018	39	36
2019	39	37
Average Age	38	36

No statistically significant changes in average age from 2015-2019

Racial Breakdown by Gender

	Race	2015	2016	2017	2018	2019
M	Asian	0%	1%	0%	1%	1%
	Black or African American	9%	9%	10%	12%	12%
	Native American	3%	2%	3%	3%	3%
	Two or More Races	1%	1%	1%	1%	1%
	Unknown	1%	1%	2%	2%	3%
	White	86%	85%	84%	81%	80%
	Total	100%	100%	100%	100%	100%
F	Asian	0%	1%	0%	1%	0%
	Black or African American	3%	3%	4%	3%	4%
	Native American	5%	5%	5%	3%	5%
	Two or More Races	1%	1%	2%	2%	2%
	Unknown	1%	1%	1%	1%	1%
	White	89%	88%	88%	91%	88%
	Total	100%	100%	100%	100%	100%

Male clients have seen a 3% increase in “Black or African American” population from 2015 to 2019. Both 2018 and ’19 were at 12% while the percentage of “Caucasian” men in the population has decreased 6% (86% in 2015 to 80% in 2019).

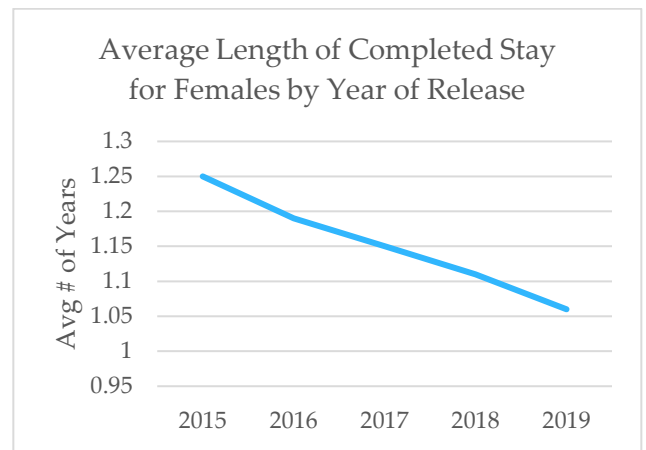
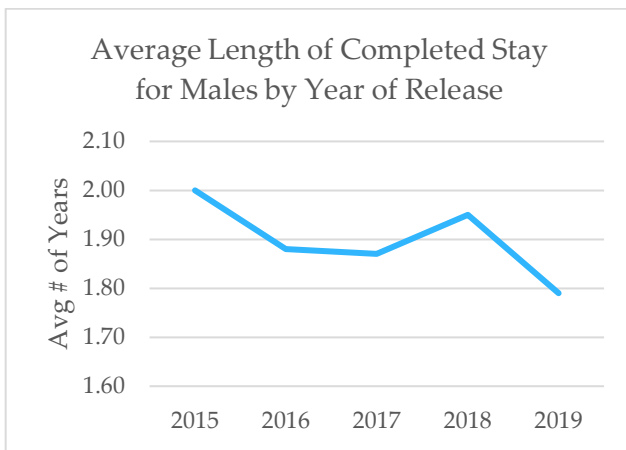
Female clients have remained essentially the same for the last five years.



1.3 Length of Completed Stay

The average length of completed stay by number of years for all clients with a straight release or release to probation or parole are outlined below per year, by gender.

	Males	Females
2015	2.00	1.25
2016	1.88	1.19
2017	1.87	1.15
2018	1.95	1.11
2019	1.79	1.06



1.4 Restrictive Housing Population (RH)

The numbers in facility rows, separated by year represent the average number of clients daily in restrictive housing over the calendar year. The bottom highlighted row represents the overall percent of population in restrictive housing daily, for a given year. There has been an increase of .53% in restrictive housing from 2017 (.80%) to 2019 (1.33%).

	2017	2018	2019
Facility	Average	Average	Average
MSP	12.41	19.92	22.87
MCC	4.08	4.99	4.85
Women	2.39	2.09	2.88
Total	18.88	27.01	30.49
% of Pop. in RH	0.80%	1.10%	1.33%



1.5 Intensive Mental Health Unit Average Population

	2017 Average Population	2018 Average Population	2019 Average Population
January	24	26	25
February	25	24	26
March	26	26	27
April	25	28	26
May	24	27	26
June	23	29	24
July	23	27	25
August	24	27	25
September	25	28	25
October	25	28	26
November	24	27	26
December	27	26	27
Annual Average	25	27	26

Behavioral Health Prevalence Among Adult DOC Population

On average at any given time during 2019:

- 672 male clients, or 33% of the male ADP for 2019 were being treated with psychotropic medication
- 138 female clients, or 66% of the female ADP for 2019 were being treated with psychotropic medication
- Medical staff respond to an average of 578 behavioral health sick call requests from clients monthly
- Approximately 89 new behavioral health intake screens are completed monthly



2.0 Correctional Programming

2.1 Correctional Program Fidelity

Beginning in the spring of 2016, DOC staff participated in a University of Cincinnati Corrections Institute (UCCI) training on fidelity monitoring using their group observation and coaching process. The form is designed to provide a platform for trained staff to observe and rate program delivery in six individual skill areas and adherence to specific program curriculums, providing an overall fidelity score. The scores can range from 0-2. A zero score indicates “needs improvement,” 1 indicates “satisfactory,” and 2 “very satisfactory.” Initial overall score goals for Maine DOC programs was set at 1.5, with no individual skill area being under 1. All scores for each observation are entered in a database that keeps cumulative overall scores for each program.

Immediately following each observation, rater feedback is provided to program staff to highlight strengths and areas of needed improvement. Cumulative reporting on each program has been provided to identify Department-wide areas of need, and specific targeted training to reinforce skill areas has been provided.

This chart shows a 3-year comparison of fidelity scores and number of observations completed, by program name. When looking at the 3-year average program fidelity compared to the most recent year, 2019, it shows a slight improvement. When looking at individual years, our pilot year of 2017 has the lowest scores as expected. 2018 shows the highest scores, although the change from 2018 to 2019 was insignificant. *Strong, consistent fidelity is demonstrated throughout all our core programs being monitored by the observation process.*

	T4C	CBI-SA	CBI-SO	LIB
2019 Overall Fidelity Score	1.84	1.87	1.90	1.90
2018 Overall Fidelity Score	1.91	1.87	1.91	1.91
2017 Overall Fidelity Score	1.74	1.80	1.81	1.90
3 Year Average Fidelity Score	1.83	1.85	1.87	1.90
Fidelity Change 2019 to 3 Year Ave	0.01	0.02	0.03	0.00
2019 Total Observations	6	9	9	22
2018 Total Observations	11	21	6	26
2017 Total Observations	14	14	20	3
3 Year Average Observations	10	15	12	17
Change in Observations 2019 to 3 Year Ave	-4	-6	-3	5

2019 observations were below the three-year average, except for LIB programs.



2.2 Case Management

Case Management Improvements 2016-2019

The Division of Correctional Programming initiated an aggressive training plan in 2016 to assist the Correctional Case Management (CM) team in skill acquisition and development. The initial training, “Prisoner Engagement, Observation and Documentation” provided the team a comprehensive review of policy 23.04, Assessment and Case Management, as well as a strategic approach to fully implement all aspects of the policy into their individual practice.

The team has progressed greatly since that initial training. Over the last three years, training topics became more advanced as case management data collected revealed a more robust and positive outcome for both current clients and those releasing. In 2017, similar trainings were provided for all Unit Managers (UM) to enhance opportunities for growth and development and in support of the CM efforts. Since initiating the targeted training for CMs and UMs, positive development in case management skills has shown a solid trend of improvement to engage DOCs clients in risk reduction activities. Trainings have continued quarterly and uninterrupted since 2016.

During 2019, the CM team attended four separate trainings held at Central Office focusing on advanced topics in case management. Trainings included:

- Ethics for the Correctional Case Manager
- Medication Assisted Treatment (MAT)
- Cognitive Behavioral Treatment
- Veteran Services and Human Trafficking

Through targeted trainings, coaching and oversight, the department’s case management team continues increasing their capacity to deliver effective case management services to our incarcerated population. In 2019 these efforts were recognized with the promotion of two case managers to the role of unit manager. A culture of excellence is growing throughout the department led by the dedication of our CMs through delivering evidence-based programs and practices which will undoubtedly contribute to a reduction in recidivism in coming years.

Targeted CM Trainings since 2016 Include:

- Role of the Correctional Case Manager
- Case Planning Essentials
- Evidence Based Principles of Effective Prisoner Intervention
- Core Correctional Practices
- LSI-r Review; Interpretation and utility in case plan development
- Supervision and Management of Prisoners
- ODARA (Ontario Domestic Assault Risk Assessment)
- Risk, Need, Responsivity and Fidelity.
- Building Productive Teams
- Leadership
- Cognitive Behavioral Treatment
- Human Trafficking
- Veteran Services

Since the efforts to improve DOC’s CM practices started, a new tradition has emerged to recognize one CM annually for their contributions and efforts in advancing the Department’s Mission Statement through effective case management practices. In 2019, Hollie Brewer from Mountain View Correctional Facility was recognized.



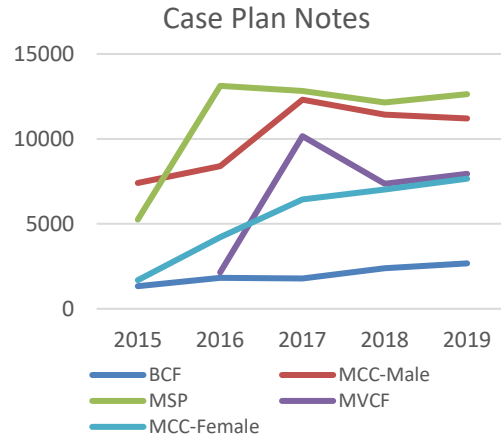
Maine Department of Corrections 2019 Year End Report

Case Planning Improvement Statistics

Case Plan Documentation

The chart below shows the average yearly % of case plans with an up to date status. Overall percentages over the last three calendar years have shown 5% improvement. The chart below and to the right shows the total number of case plan notes entered by CMs, by facility, over a 5-year period. All facilities clearly demonstrate an improvement in updating and writing notes regarding client case plans.

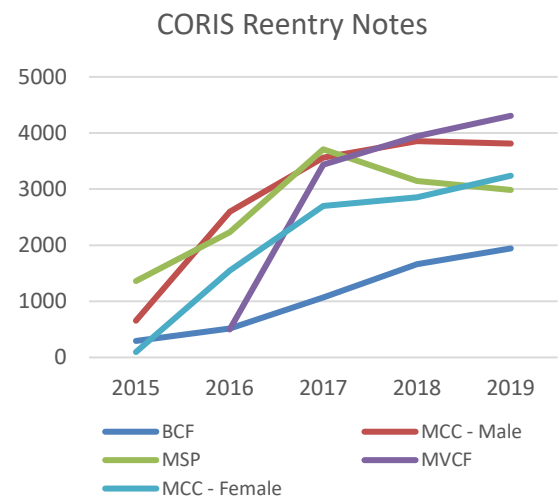
	2017 Facility Ave	2018 Facility Ave	2019 Facility Ave
Bolduc	92%	88%	96%
DCF	41%		
MCC-M	91%	86%	85%
MCC-F	89%	88%	85%
MSP	81%	72%	76%
MVCF	95%	88%	91%
All Fac. Avg.	82%	84%	87%



Reentry Contacts-

DOC policy dictates at a minimum, there must be a case manager reentry note monthly starting at 9 months to discharge. The chart below shows the yearly average % of required reentry contact notes entered. Since tracking in 2017, there has been a 24% improvement in reentry documentation. The chart below to the right shows the total reentry notes written by case workers, by facility, over a 5-year span, clearly indicating the substantial improvement to this practice.

	2017 Facility Ave	2018 Facility Ave	2019 Facility Ave
Bolduc	51%	87%	99%
DCF	35%		
MCC-M	91%	88%	92%
MCC-F	84%	99%	99%
MSP	78%	85%	92%
MVCF	92%	97%	98%
All Fac. Ave.	72%	91%	96%





2.3 Medication Assisted Treatment (MAT) Initiative

In July 2019, MDOC initiated MAT services at Maine Correctional Center (men and women), Southern Maine Women's Reentry Center, and Bolduc Correctional Facility. After an effective launch and early positive outcomes, MAT was initiated at Mountain View Correctional Center on November 4, 2019.

Groups Recover Together and Day One assist the MDOC by providing continuity of care services for clients participating in MAT, linking each client to MAT providers in local communities. Additionally, clients releasing receive a prescription for Naloxone (and associated training for usage). Through partnership with MaineCare, releasing clients eligible for MaineCare benefits have services activated immediately upon release. Clients ineligible for MaineCare have access to community treatment funding provided by Maine Department of Substance Abuse and Mental Health Services.

At the end of 2019, the following clients have been served by MDOC's MAT services:

- 115 clients have successfully completed treatment while incarcerated and transitioned to the community with follow-up care appointments established;
 - All clients transitioned from DOC with a continuity of care plan and treatment appointment in the community;
 - 84% of clients attended their first community treatment appointment to continue services;
 - All clients released from DOC with a Narcan kit and training/instructions for use;

2020 Expansion Update:

The current MAT services will continue into 2020. Additionally, the Department is planning key expansion efforts in February.

MAT is set to begin at Maine State Prison mid-February 2020. This is expected to significantly expand the clientele eligible for MAT services.

Additionally, the Department's program criteria for MAT is also expanding in February 2020. With the planned expansion, MAT services will be offered to:

1. New admissions (from county jail or the community) who are currently receiving MAT services will be continued on MAT services while in MDOC's custody;
2. Current MDOC clients who are within six months of discharge will be eligible for MAT services, rather than the current timeframe of three months to discharge;

The expansion of eligibility for treatment services from three to six months prior to discharge will significantly increase the number of MDOC clients inducted on MAT. This change, coupled with the launching of MAT at MSP, is expected to grow the MDOC MAT program by more than 200%, with a target enrollment of 225 men and women.

The availability of continuous treatment from the jail/community into MDOC custody will eliminate the need for tapering upon admission to MDOC custody, unless medically necessary. The projected impact of this change is expected to be minimal, initially, but will increase as jail MAT programs, services, and referrals continue to increase.

Groups Recover Together and Day One will continue to assist the MDOC by providing in facility support for clients participating in MAT with discharge planning and continuity of care services. Clients releasing will continue to receive a prescription for Naloxone (and associated training for usage). Beginning in February 2020, MAT clients releasing from MDOC will no longer be provided a cell phone for continuity of care purposes – any necessary communication needs will be identified during the release planning process and addressed on an individual-basis.



Maine Department of Corrections 2019 Year End Report

Treatment, Educational & Vocational Programming - Men

Statewide Treatment Programming

The programs listed below are core treatment programs for the adult facility male population. The chart demonstrates core programs successfully completed by clients, statewide, by calendar year. Included are cognitive behavioral treatment programs, residential and outpatient substance use programming, residential sex offender treatment, domestic violence programming, and parenting programs.

Men's Treatment Programming	Successful Completions				
	2015	2016	2017	2018	2019
Alternatives To Violence	62	13	31	18	62
Anger Management	47	101	33	27	32
CBI Sex Offender Mt View	1	41	64	35	44
Sexual Behavior Treatment Mt. View		49	65	28	23
R.U.L.E.	12	11	16	15	10
Challenge Program	38	82	59	21	22
Criminal Addictive Thinking	4	17	35	19	1
DV Programming	57	92	138	159	109
SAFE					69
Inside-Out Dads	84	114	88	68	20
Long Distance Dads	3	28	15	3	25
New Freedom			23	47	42
Psychology Of Incarceration	237	119	92	25	35
Recovery Peer Support- Coach	71	31	49	22	13
Recovery Peer Support- Participant	1	1		21	23
R&R2					13
MAT					82
Mt View Sub Abuse Program		35	36	46	33
Sub use Aftercare			20	26	34
Sub use CBI-SA		29	107	84	61
Sub use Individual			23	55	74
Sub use Living in Balance- Core		33	241	202	210
Sub use Living in Balance- Other			1	4	3
Sub use Living in Balance- Relapse Prevention		24	56	76	121
Sub use Prime For Life	61	79	75	65	66
Sub use Prime Solutions	24	43	10	28	44
Sub use RSA		26	37	46	68
Sub use Stages of Change			56	23	15
Sub use Seeking Safety		8	55	51	53
The Impact of Crime	8	7	8	16	38
Thinking for a Change	154	145	167	139	80
YAOP		22	29	29	24
Total Successful Completions	864	1150	1629	1398	1549
Total Unique Men Involved	611	807	1054	935	989
Total Unique Male Population by Year	3021	3136	3260	3295	3112
% of Unique Male Pop Involved	20%	26%	32%	28%	32%



Maine Department of Corrections 2019 Year End Report

Men's Substance Use Programming

Below are statewide men's core substance use programs, broken out by program name and year. Blank or N/A spaces indicate the program did not have participation or exist. The zeros in "Outpatient Generic" for 2017-2019 is due to the adding of individual program titles during this timeframe that more accurately capture which substance use program was completed. Medication Assisted Treatment (MAT) was initiated in July 2019. In the first six months of the pilot, 82 male inmates successfully participated in treatment and transitioned to the community.

Men's Substance Use Treatment Programming	Successful Completions				
	2015	2016	2017	2018	2019
DSAT	19	28	1		
MAT					82
Mt View Sub Abuse Program		35	36	46	33
SA Aftercare			20	26	34
CBI-SA		29	107	84	61
Individual	N/A	N/A	23	55	74
Living in Balance- Core		33	241	202	210
Living in Balance- Other			1	4	3
Living in Balance- Relapse Prevention		24	56	76	121
Outpatient Generic	49	231	0	0	0
Prime For Life	61	79	75	65	66
Prime Solutions	24	43	10	28	44
Relapse Prevention		8	5	1	17
Residential Substance Use Treatment		26	37	46	68
Stages of Change			56	23	15
Seeking Safety		8	55	51	53
Total Successful Completions	153	544	723	707	881
Total Unique Men Involved	124	439	674	567	646
Total Unique Male Population by Year	3021	3136	3260	3295	3112
% of Unique Male Pop Involved	4%	14%	21%	17%	21%

Men's Sex Offender Programming

Below are sex offender programming completions from 2015 through 2019, by program name. The overarching sex offender programs were RULE & Sexual Behavior Treatment-Mt. View. The CBI-SO program is a component of the Mountain View Correctional Facility sex offender program.

Men's Sex Offender Programming	Successful Completions				
	2015	2016	2017	2018	2019
Sexual Behavior Treatment Mt View		49	65	28	23
CBI Sex Offender Mt View	1	41	64	35	44
Sex Offender Aftercare					6
SAPHE				6	6
R.U.L.E.	12	11	16	15	10
Total Successful Completions	13	101	145	84	89
Total Unique Men Involved	13	60	82	55	58
Total Unique Male Population by Year	3021	3136	3260	3295	3112
% of Unique Male Pop Involved	0%	2%	3%	2%	2%



Maine Department of Corrections 2019 Year End Report

Men's Educational Programming

Successful education program completions comparison 2015 through 2019. The numbers are for all Adult Facilities combined for each year. The percent of successful completions based on unique completers to unique population by year has grown 7% since 2015.

	Successful Completions				
Men's Education Programming	2015	2016	2017	2018	2019
Adult Basic Education	10	18	29	16	25
College	1	4	11	3	38
College Transition	1			2	3
College- Associate's Degree		8			26
College- Bachelor's Degree		8		1	7
College- Semester					18
High School Diploma prep	1				
HiSET Prep Math			45	61	73
HiSET Prep Reading	1	6	59	97	114
HiSET Prep Science	2	1	54	93	101
HiSET Prep Social Studies		6	65	97	124
HiSET Prep Writing	1	2	40	74	76
HiSET/HiSET prep	53	87	42	2	5
HSED awarded from MDOE		1	32	47	51
SCP Education Hold					9
Total Successful Completions	70	141	377	493	670
Total Unique Men Involved	68	125	168	177	270
Total Unique Male Population by Year	3021	3136	3260	3295	3112
% of Unique Male Pop Involved	2%	4%	5%	5%	9%



Maine Department of Corrections 2019 Year End Report

Men's Vocational Programming

The Maine Department of Corrections assessed all vocational programs in November of 2019 as part of the plan to standardize, streamline and increase all vocational programs, outcomes, and employment pathways. All programs were assessed on the following items using a standardized checklist: program basics; partnerships with agencies or stakeholders; staffing characteristics; and expectations. Next steps for 2020 will include comprehensive planning for vocational program enhancements, capitalizing on current Maine job market opportunities.

Successful vocational program completions comparison 2015 through 2019. The numbers are for all Adult Facilities combined for each year.

Men's Vocational Programming	Successful Completions				
	2015	2016	2017	2018	2019
Auto Body		1	6	2	
Auto Mechanics		3	12	13	5
Bee Keeping			7	11	24
Building Trades	7	37	32	4	9
Business Basics		1	4	3	4
Composting				5	2
Computer Technology	29	53	2	8	23
Culinary Arts	10	28	19	22	11
Electrical	1	1	13	8	5
EMCC Badging					5
Flagger Certification				16	3
Graphic Arts	14	6	3	1	
Master Gardener				12	17
NCCER			20	82	67
OSHA Certification	4	29	142	72	21
Servsafe Certification			13	110	65
Small Engines	8	52	29	20	17
Welding		5	12	4	2
Wood Harvesting 101	8	15	18	18	6
Wood Harvesting 102			5	14	8
Wood Harvesting CLP				3	
Work Ready	48	89	155	98	47
Total Successful Completions	129	320	492	526	341
Total Unique Men Involved	101	255	358	379	279
Total Unique Male Population by Year	3021	3136	3260	3295	3112
% of Unique Male Pop Involved	3%	8%	11%	12%	9%



Maine Department of Corrections 2019 Year End Report

2.4 Treatment, Educational & Vocational Programming - Women

The programs listed below are the core programming for the adult female DOC facility population. The numbers represent successful program completions 2015 through 2019, by program name, for all adult female population combined. Included are cognitive behavioral treatment programs, outpatient substance use programming, sex offender treatment, and domestic violence programming.

Women's Treatment Programming	Successful Completions				
	2015	2016	2017	2018	2019
Anger Management	4	9	12	9	27
Beyond Anger & Violence	3	16	15	1	
Beyond Trauma	18	13	32	13	3
Healing Trauma					32
Co-Dependent No More	13	42	62	40	36
Criminal Addictive Thinking			11	65	54
DSAT	34	47	N/A	N/A	N/A
DV Programming	1	19	12		1
R.U.L.E.				5	1
SAFE					6
MAT					32
New Freedom			6	16	20
Recovery Peer Support- Coach		9	1		
Recovery Peer Support- Participant				17	17
Sub use CBI-SA		4	24	31	21
Sub use Individual				9	5
Sub use Living in Balance- Core			63	74	51
Sub use Living in Balance- Other		9	45	15	1
Sub use Living in Balance- Relapse Prevention			23	26	42
Sub use Seeking Safety	23	75	81	47	29
Thinking for a Change	14	5			
Women's SA Services			34	144	117
Total Successful Completions	110	248	421	512	495
Total Unique Women Involved	80	165	242	232	192
Total Unique Female Population by Year	319	376	404	422	374
% of Unique Female Pop Involved	25%	44%	60%	55%	51%



Maine Department of Corrections 2019 Year End Report

Women's Substance Use Programming

Below are statewide women's core substance abuse programs, broken out by program name and year. Blank spaces indicate the program did not have participation, was newly initiated, or discontinued. Starting in 2017 substance use programming began being broken out by actual program title completed which resulted in the last year "Outpatient Generic" was used to capture several types of outpatient substance use treatment. Medication Assisted Treatment (MAT) was initiated in July 2019. In the first six months of the pilot, 32 female clients successfully participated in the treatment and transitioned to the community.

Women's Substance Use Programming	Successful Completions				
	2015	2016	2017	2018	2019
Co-Dependent No More	13	42	62	40	36
DSAT	34	47			
MAT					32
CBI-SA		4	24	31	21
Individual				9	5
Living in Balance- Core			63	74	51
Living in Balance- Other		9	45	15	1
Living in Balance- Relapse Prevention			23	26	42
Outpatient Generic			38		
Seeking Safety	23	75	81	47	29
Women's SA Services			34	144	117
Total Successful Completions	70	177	370	386	334
Total Unique Women Involved	64	141	239	189	162
Total Unique Female Population by Year	319	376	404	422	374
% of Unique Female Pop Involved	20%	38%	59%	45%	43%

Women's Educational Programming

Women's Education Programming	Successful Completions				
	2015	2016	2017	2018	2019
College	9	25	21	20	25
College Transition					1
College- Associate's Degree				4	4
College- Bachelor's Degree				1	2
College- Semester					14
Adult Basic Education		7	1		
HiSET Prep Math			10	7	10
HiSET Prep Reading		1	14	14	11
HiSET Prep Science			10	10	12
HiSET Prep Social Studies			12	12	13
HiSET Prep Writing			9	12	16
HiSET/HiSET prep	8	11	5		
HSED awarded from MDOE		2	9	8	11
Total Successful Completions	17	46	91	88	119
Total Unique Women Involved	16	40	50	41	55
Total Unique Female Population by Year	319	376	404	422	374
% of Unique Female Pop Involved	5%	11%	12%	10%	15%



Maine Department of Corrections 2019 Year End Report

Women’s Vocational Programming

The Maine Department of Corrections assessed all vocational programs in November of 2019 as part of the plan to standardize, streamline and increase all vocational programs, outcomes, and employment pathways. All programs were assessed on the following items using a standardized checklist: program basics; partnerships with agencies or stakeholders; staffing characteristics; and expectations. Next steps for 2020 will include comprehensive planning for vocational program enhancements, capitalizing on current Maine job market opportunities.

Women’s Vocational Programming is showing a steady increase in percent of population successfully completing a program.

Women's Vocational Programming	Successful Completions				
	2015	2016	2017	2018	2019
Computer Coding				1	1
Computer Technology	34	16			
Culinary Arts		12	18	6	49
EMCC Badging Program					3
NCCER					7
OSHA Certification	8	1	14	16	8
Servsafe Certification			10	49	18
Wash. Co. Comm College MFG Skills Cert					8
Work Ready	23	30	6	42	13
Total Successful Completions	65	59	48	114	107
Total Unique Women Involved	42	50	30	71	76
Total Unique Female Population by Year	319	376	404	422	374
% of Unique Female Pop Involved	13%	13%	7%	17%	20%



Maine Department of Corrections 2019 Year End Report

2.5 High School Equivalency Diplomas Earned While Incarcerated

Total high school equivalency diplomas issued by Maine Department of Education during 2019, by Facility and month.

	2019 Jan	2019 Feb	2019 Mar	2019 April	2019 May	2019 Jun	2019 July	2019 Aug	2019 Sept	2019 Oct	2019 Nov	2019 Dec	2019 Total
BCF	0	0	0	0	0	1	0	1	0	0	1	0	3
MCC-M	1	1	3	0	1	1	1	1	1	0	0	0	10
MCC-F	2	0	0	0	0	0	0	0	0	3	2	3	10
MSP	1	4	2	3	6	0	0	1	0	0	1	1	19
MVCF	2	1	1	1	0	2	2	4	2	2	1	1	19
Totals	6	6	6	4	7	4	3	7	3	5	5	5	61

High School Equivalency Diplomas (HSED)

The table below shows HSEDs issued by the State of Maine Department of Education, separated by facility and completion years.

Facility	2016	2017	2018	2019
BCF	8	3	4	3
DCF	7	2	N/A	N/A
MCC-All	11	12	19	20
MSP	30	24	27	19
MVCF	22	18	20	19
Totals	78	59	70	61

Classroom Observations

During 2019 Department of Corrections initiated education classroom observations at all adult facilities. The observations were implemented to ensure teacher proficiency in the areas of: lesson planning; student engagement/responsiveness; classroom management; and monitoring and assessment. The chart below shows how many observations were conducted by facility. The results demonstrated teachers having high proficiency in both teaching and managing their classrooms.

Facility	Total
MCC-M	4
MCC-W	2
SMWRC	0
MVCF	15
BCF	0
MSP	5
Total observations	26



**2.6 College Programming at Maine Department of Corrections
Summary**

For over 20 years, the Maine Department of Corrections has been providing opportunities for clients to participate in and complete college programming. Funding has come from two primary sources: Doris Buffett through the Sunshine Lady Foundation since 2006 and the Second Chance Pell Program since 2016. Opportunities are available for clients to earn an Associate’s or a Bachelor’s Degree, with one student currently pursuing a Master’s Degree. With close to 100 college degrees awarded to clients since 2009, the college program has had a transformative impact on the culture of corrections and in the mindset of clients.

Program	Gender	2009	2011	2013	2016	2018	2019	Total
Associate's Degree	F					4	4	8
	M	13	7	9	8		26	63
Bachelor's Degree	F					1	2	3
	M		2	5	8	1	7	23
Grand Total		13	9	14	16	6	39	97

Financial Support

Sunshine Lady Foundation

Since its inception in 2006, Doris Buffett's Sunshine Lady Foundation has gifted well over \$2 million to fund client education at MSP and MCC’s Women Center, including the cost of tuition and books.

For several years, the cost per semester at MSP was approximately \$55,000 plus \$7000 for books. This cost has been offset by SCP Funding, which started in 2016.

Maine Department of Education – Second Chance Pell Program

The Second Chance Pell Program started at MSP in Fall 2016 and at MCC/SMWRC in Fall 2017.

The allotment to UMA for Second Chance Pell students is about \$375,000 per academic year. The number of students in the SCP Grant includes 25 seats at MSP and 30 at MCC (15 women and 15 men). All students are eligible to be funded at full-time, or 12 credit hours per semester.

Return to Custody Information

MDOC tracked all clients released from 2010 – July 2019 who completed either an Associate’s Degree or Bachelor’s Degree.

Since 2010, there have been:

- 23 male releases with 2 returns (8.7% return rate)
- 4 female releases with 0 returns (0% return rate)
- 27 releases since 2010 and an overall return rate of 7.4%.



Maine Department of Corrections 2019 Year End Report

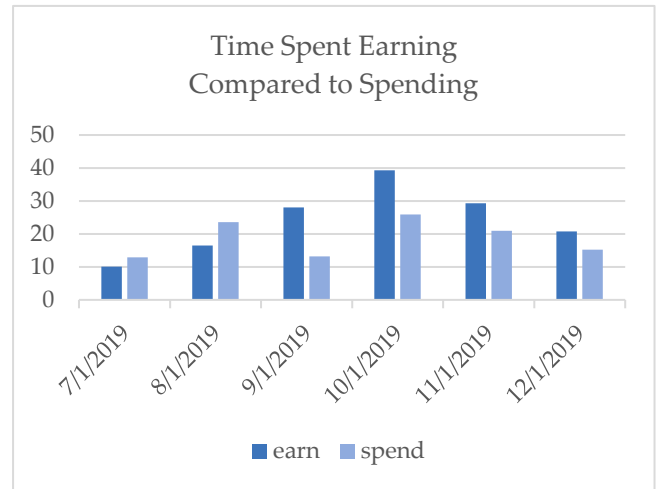
2.7 Programming Tablets

Throughout 2019 the Department expanded the use of tablet technology to support increased education and vocational programming in more facilities. Incorporating the use of tablets in the delivery of key programming supports the mission of the Department and two of our three strategic priorities: Program Expansion and Use of Technology.

The tablets are corrections grade and operate on a closed, managed network that allows clients access to thousands of hours of free academic, vocational, life skills, and therapeutic programming designed for all learning levels. Currently there are a total of 678 tablets available to clients at specific levels in the following facilities: Maine State Prison, Maine Correctional Center, and Mountain View Correctional Facility.

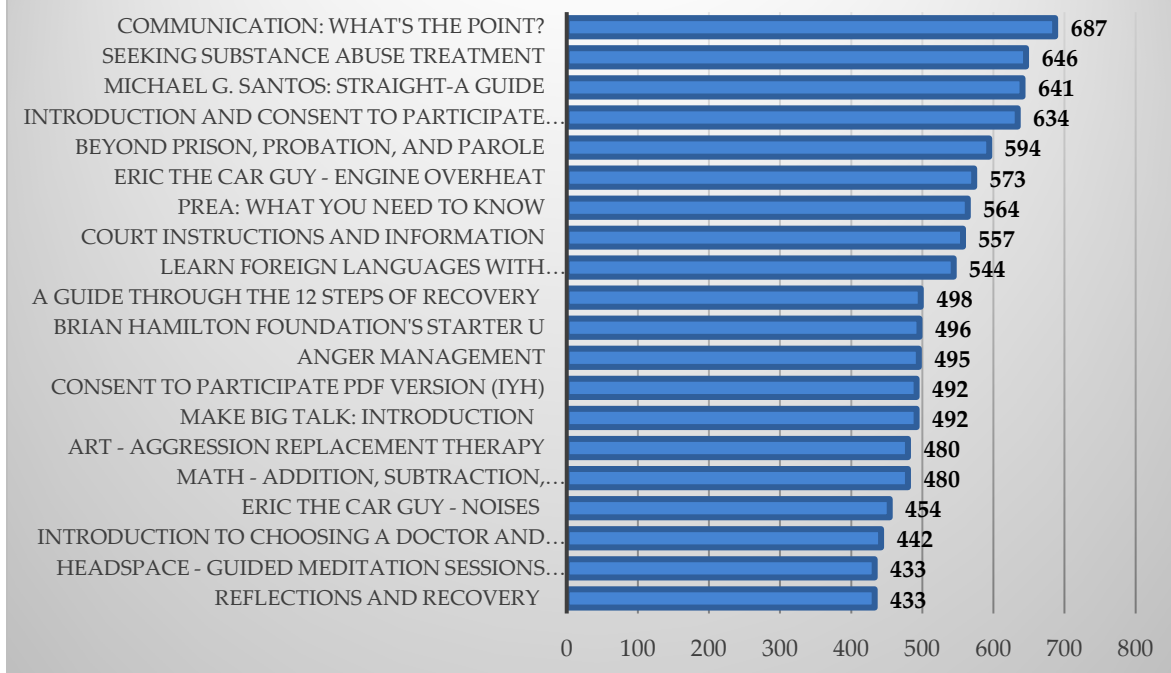
2019 Tablet Data Points

Unique Active Clients	1,819
Total Productive Hours	232,374
Total Entertainment Hours	61,849
Total Hours	294,223
Average Hours per Client	162
% of Total Hours that were Productive	79%



During July and August clients used more time spending their points than earning points. This changed for the rest of 2019, with clients using more of their time to earn than to spend. It should be noted that time spent texting is not tracked and therefore not included in this data.

Top 20 Courses Completed in 2019





3.0 Classification

3.1 Admissions & Releases

Admissions and Releases Overtime

Average Monthly Gain

	2015	2016	2017	2018	2019	All Years
All Population	4.92	7.25	1.67	-4.08	-14.75	-1.0
Men	0.83	5.33	1.25	-6.17	-13.75	-2.50
Women	4.08	2.25	0.42	2	-1.0	1.55

Admissions & Releases

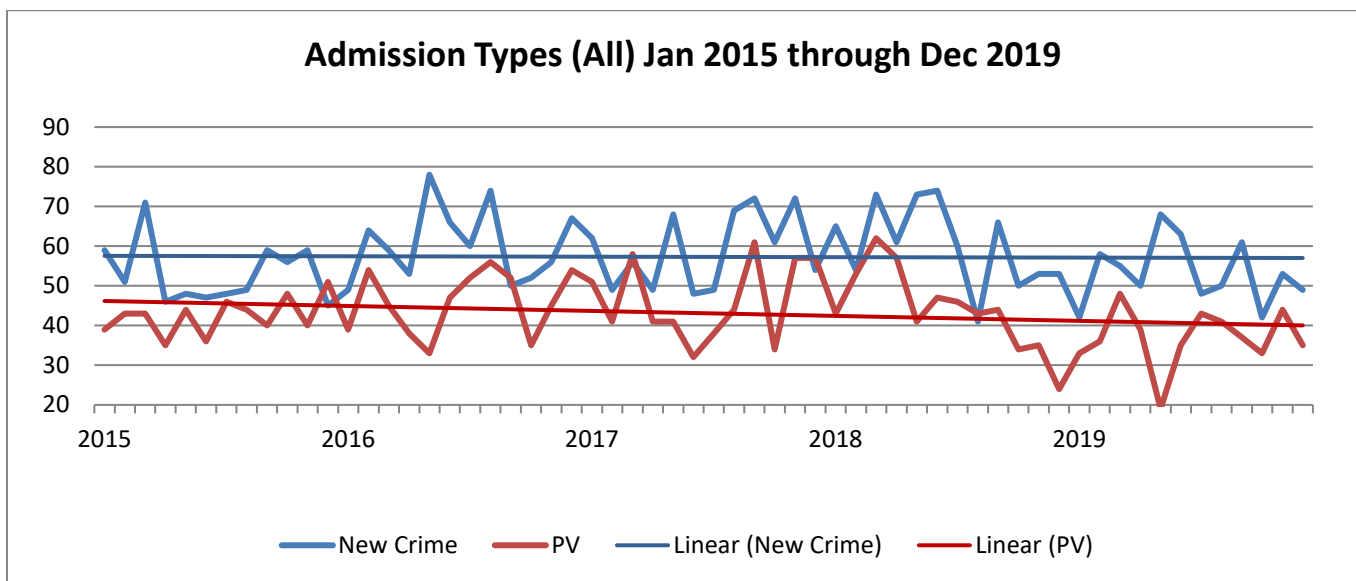
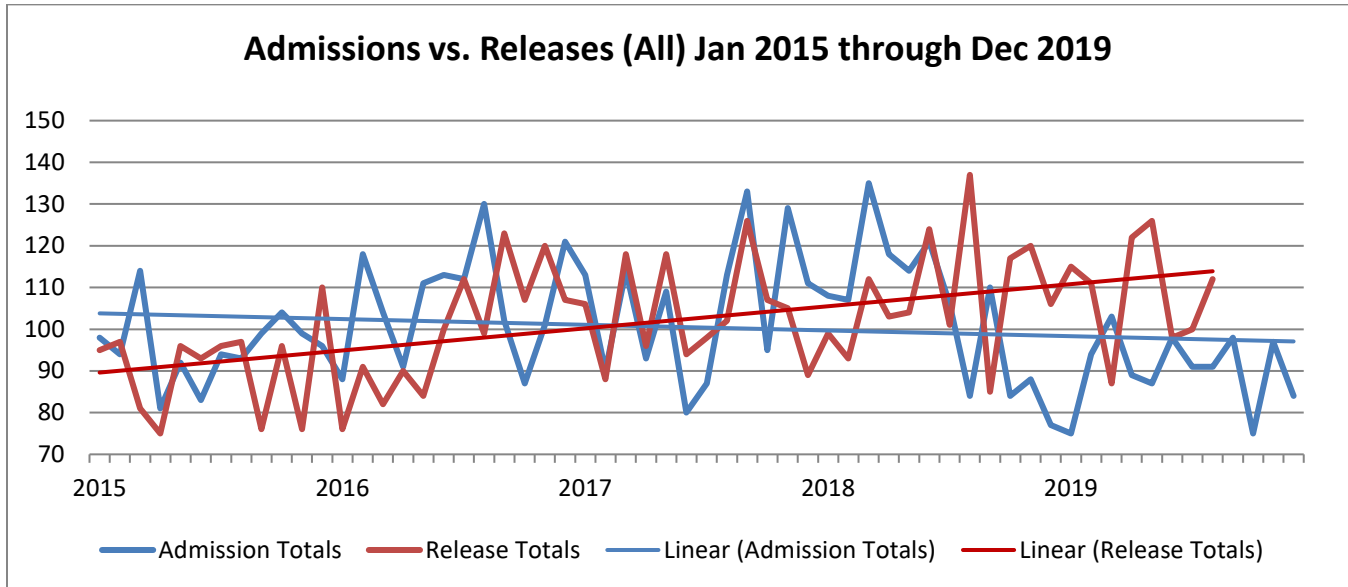
New Crime and Probation Returns, and Straight and Probation releases, by Gender

		2015	2016	2017	2018	2019
Men	<i>New Crime</i>	563	635	613	687	558
	<i>PV</i>	425	467	479	457	379
	Admission Totals	988	1102	1092	1144	937
	<i>Straight</i>	450	496	525	623	560
	<i>Probation</i>	528	542	552	608	542
	Release Totals	978	1038	1077	1231	1102
Women	<i>New Crime</i>	75	93	99	100	81
	<i>PV</i>	84	87	76	102	64
	Admission Totals	159	180	175	202	145
	<i>Straight</i>	58	67	81	88	69
	<i>Probation</i>	52	86	89	97	88
	Release Totals	110	153	170	185	157
All Population	<i>New Crime</i>	638	728	709	765	639
	<i>PV</i>	509	550	555	562	443
	Admission Totals	1147	1278	1267	1327	1082
	<i>Straight</i>	508	563	607	699	629
	<i>Probation</i>	580	628	641	717	630
	Release Totals	1088	1191	1247	1416	1259



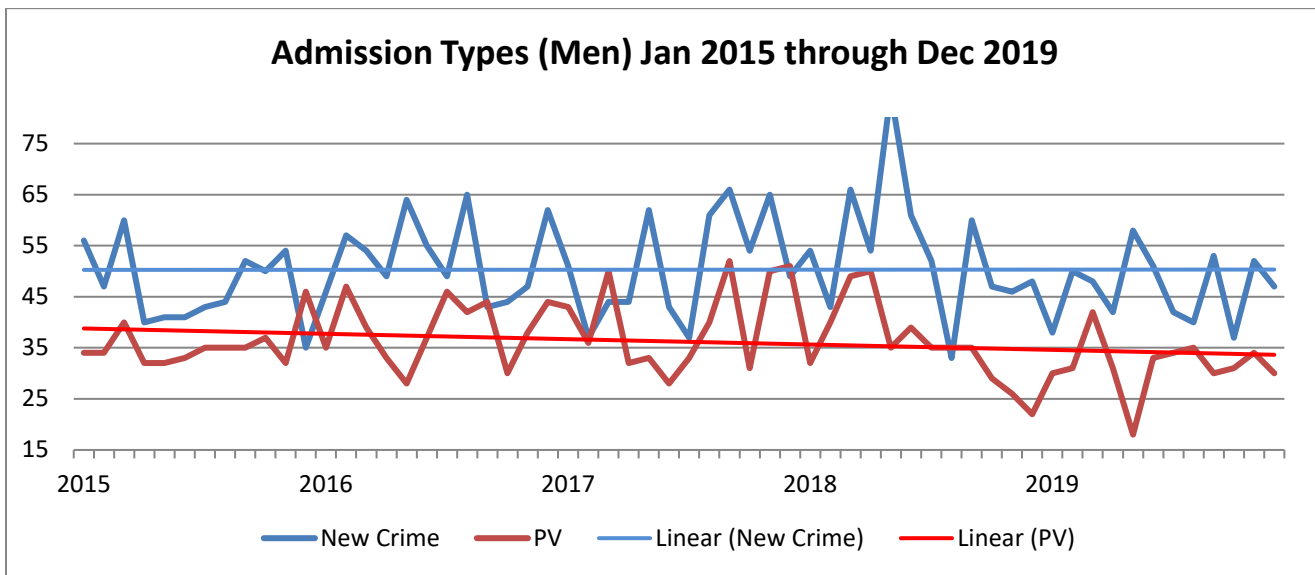
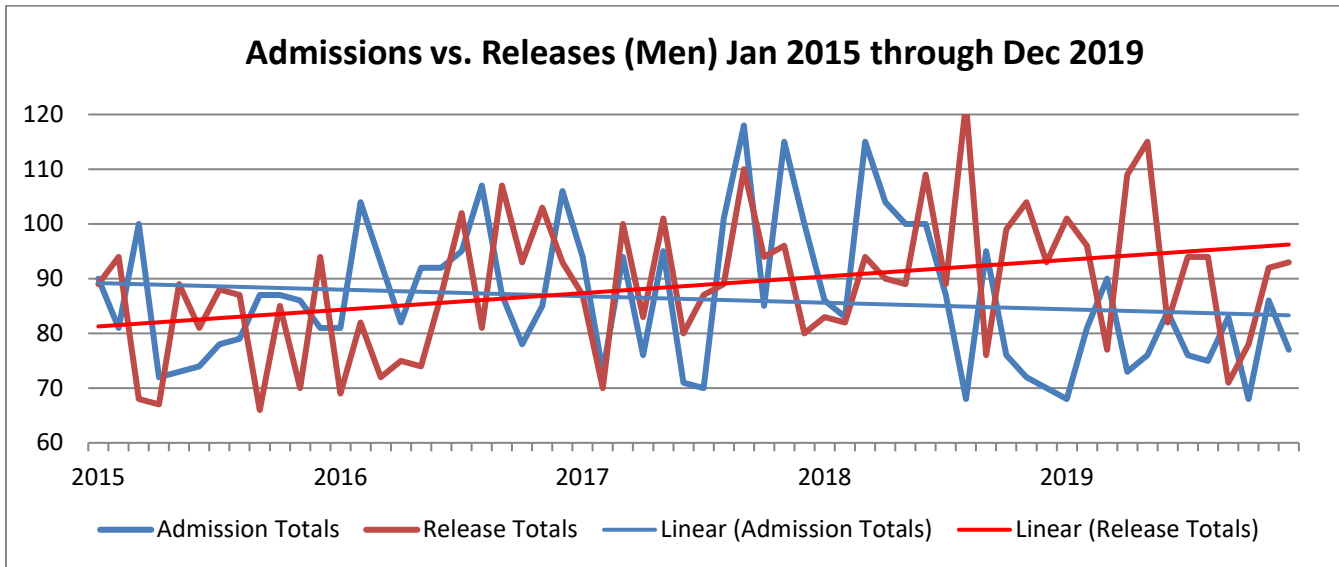
Maine Department of Corrections 2019 Year End Report

The next several charts represent a cumulative visual look at admissions and releases, types of admissions, and are broken out by total population, men, and women over the five-year period of 2015-2019.



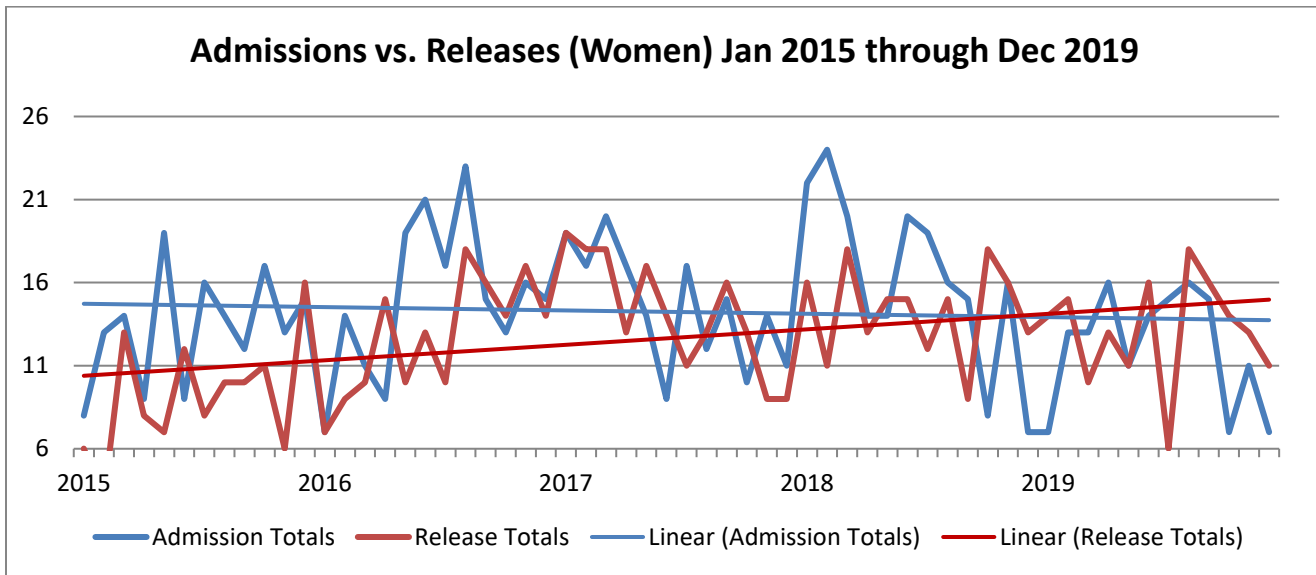


Maine Department of Corrections 2019 Year End Report

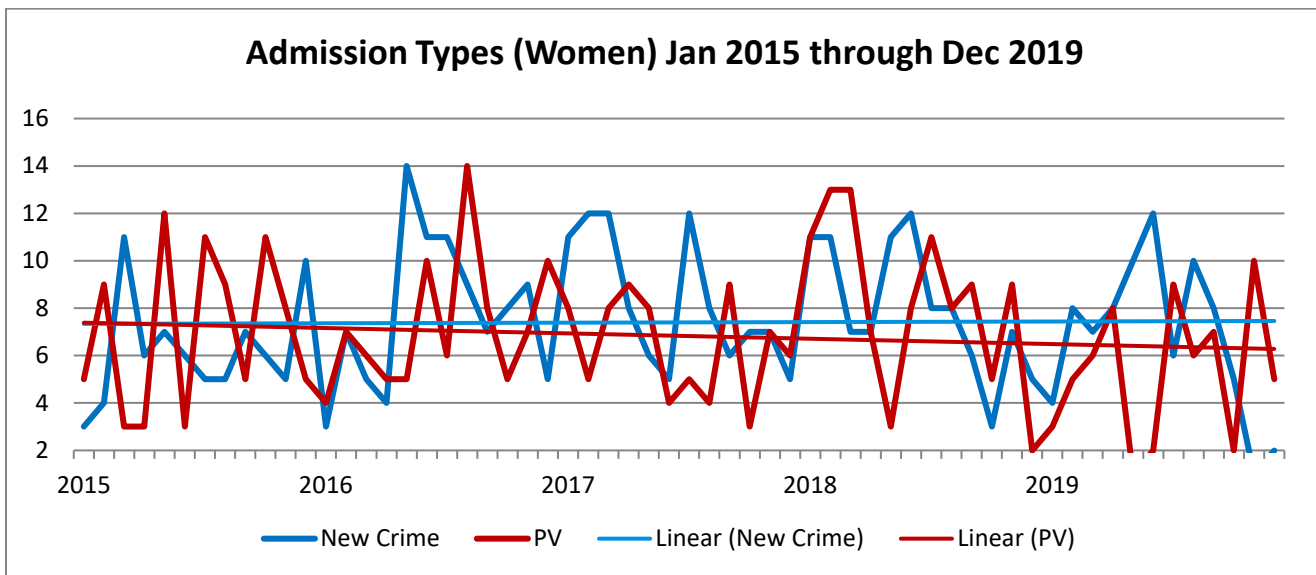




Maine Department of Corrections 2019 Year End Report



When examining the admission types for women over the last five years it is clear to see there has been an increase of new crime admissions, and a decrease of probation returns.





Maine Department of Corrections 2019 Year End Report

3.2 New Admissions by Crime Group - Men

The table below shows new admissions to a DOC Adult Correctional Facility, by controlling sentences for new crimes, by year, and percent represented of total admitted. When looking at percentage of those admitted by crime groupings over the 5-year period, there is minimal change.

Crime Group Men	2015	%	2016	%	2017	%	2018	%	2019	%
Arson	4	0.72%	10	1.54%	9	1.45%	6	0.93%	7	1.27%
Assault/Threaten	88	15.83%	88	13.56%	103	16.56%	106	16.51%	96	17.45%
Bail	4	0.72%	6	0.92%	12	1.93%	10	1.56%	6	1.09%
Burglary	51	9.17%	49	7.55%	38	6.11%	47	7.32%	39	7.09%
Conspiracy	3	0.54%	4	0.62%	8	1.29%	7	1.09%	2	0.36%
Drugs- Furnishing	126	22.66%	178	27.43%	154	24.76%	171	26.64%	146	26.55%
Drugs- Possession	20	3.60%	16	2.47%	16	2.57%	18	2.80%	13	2.36%
Drugs- Meth Lab	0	0.00%	7	1.08%	7	1.13%	5	0.78%	4	0.73%
Drugs- Illegal Importing	1	0.18%	2	0.31%	3	0.48%	2	0.31%	2	0.36%
Forgery	3	0.54%	7	1.08%	6	0.96%	6	0.93%	6	1.09%
Kidnapping	0	0.00%	2	0.31%	2	0.32%	2	0.31%	2	0.36%
Manslaughter	11	1.98%	6	0.92%	10	1.61%	13	2.02%	5	0.91%
Murder	8	1.44%	10	1.54%	11	1.77%	9	1.40%	9	1.64%
OUI	16	2.88%	17	2.62%	14	2.25%	11	1.71%	8	1.45%
Property Damage	0	0.00%	4	0.62%	4	0.64%	4	0.62%	2	0.36%
Public Admin	9	1.62%	9	1.39%	7	1.13%	12	1.87%	15	2.73%
Robbery	32	5.76%	38	5.86%	36	5.79%	19	2.96%	22	4.00%
Sex Offenses	57	10.25%	64	9.86%	56	9.00%	53	8.26%	45	8.18%
Stalking/Terrorize	9	1.62%	8	1.23%	8	1.29%	4	0.62%	11	2.00%
Theft	59	10.61%	60	9.24%	58	9.32%	69	10.75%	52	9.45%
Traffic Criminal	52	9.35%	58	8.94%	53	8.52%	65	10.12%	51	9.27%
Weapons	3	0.54%	6	0.92%	7	1.13%	3	0.47%	7	1.27%
Grand Total	556	100.00%	649	100.00%	622	100.00%	642	100.00%	550	100.00%



Maine Department of Corrections 2019 Year End Report

New Admissions by Crime Group- Women

The table below shows new admissions to a DOC Adult Correctional Facility, by controlling sentences for new crimes, by year, and percent represented of total admitted. When looking at percentage of those admitted by crime groupings over the 5-year period, the only notable change is in “Drug-Furnishing” category. 2015-2016 demonstrates just over a third of all new admission attributed to furnishing drugs. 2017-2019 shows that number increasing to almost half of all admissions for new crimes being attributed to furnishing drugs.

Crime Group Women	2015	%	2016	%	2017	%	2018	%	2019	%
Arson	1	1%	1	1.04%	0	0.00%	1	1.01%	0	0.00%
Assault/Threaten	5	6%	6	6.25%	8	8.08%	3	3.03%	6	7.32%
Bail	1	1%	2	2.08%	0	0.00%	0	0.00%	0	0.00%
Burglary	3	4%	3	3.13%	3	3.03%	6	6.06%	0	0.00%
Conspiracy	0	0%	1	1.04%	1	1.01%	1	1.01%	1	1.22%
Drugs- Furnishing	29	37%	33	34.38%	50	50.51%	47	47.47%	40	48.78%
Drugs- Possession	4	5%	4	4.17%	4	4.04%	1	1.01%	6	7.32%
Drugs- Meth Lab	0	0%	2	2.08%	2	2.02%	3	3.03%	1	1.22%
Forgery	0	0%	3	3.13%	3	3.03%	1	1.01%	2	2.44%
Kidnapping	0	0%	0	0.00%	1	1.01%	1	1.01%	0	0.00%
Manslaughter	3	4%	1	1.04%	4	4.04%	1	1.01%	2	2.44%
Murder	2	3%	0	0.00%	0	0.00%	1	1.01%	2	2.44%
OUI	2	3%	2	2.08%	0	0.00%	1	1.01%	4	4.88%
Property Damage	1	1%	0	0.00%	0	0.00%	0	0.00%	0	0.00%
Public Admin	1	1%	2	2.08%	2	2.02%	2	2.02%	2	2.44%
Robbery	3	4%	11	11.46%	6	6.06%	0	0.00%	2	2.44%
Sex Offenses	1	1%	3	3.13%	3	3.03%	1	1.01%	5	6.10%
Stalking/Terrorize	0	0%	0	0.00%	0	0.00%	1	1.01%	0	0.00%
Theft	14	18%	19	19.79%	10	10.10%	20	20.20%	7	8.54%
Traffic Criminal	8	10%	2	2.08%	2	2.02%	8	8.08%	2	2.44%
Weapons	0	0%	1	1.04%	0	0.00%	0	0.00%	0	0.00%
Grand Total	78	100%	96	100.00%	99	100.00%	99	100.00%	82	100.00%



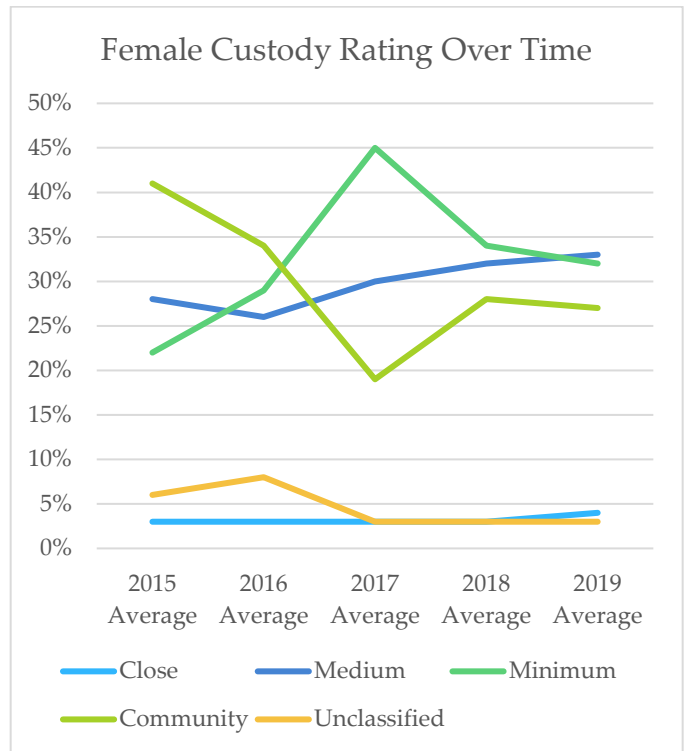
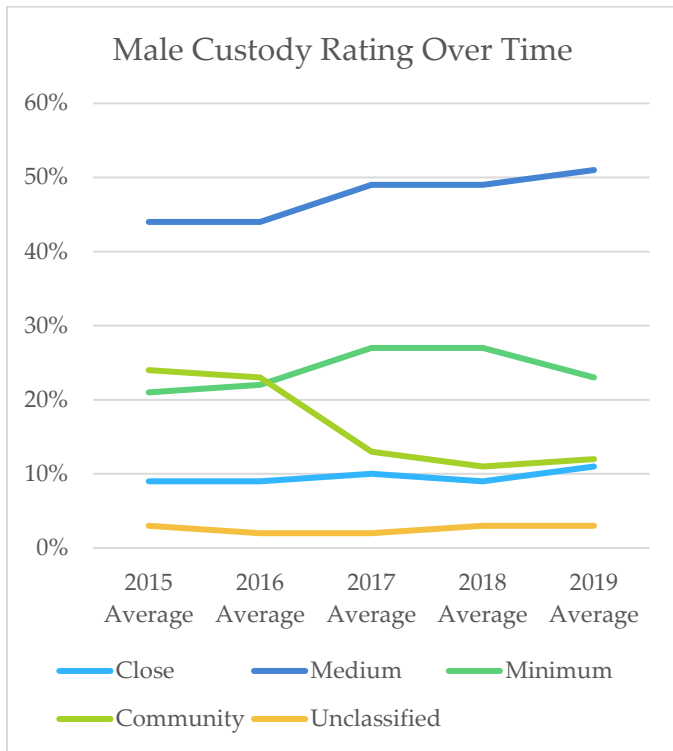
Maine Department of Corrections 2019 Year End Report

3.3 Current Custody Ratings

Custody Rating Overtime

		2015 Average	2016 Average	2017 Average	2018 Average	2019 Average
Male	Close	9%	9%	10%	9%	11%
	Medium	44%	44%	49%	49%	51%
	Minimum	21%	22%	27%	27%	23%
	Community	24%	23%	13%	11%	12%
	Unclassified	3%	2%	2%	3%	3%
	Grand Total	100%	100%	100%	100%	100%

Female	Close	3%	3%	3%	3%	4%
	Medium	28%	26%	30%	32%	33%
	Minimum	22%	29%	45%	34%	32%
	Community	41%	34%	19%	28%	27%
	Unclassified	6%	8%	3%	3%	3%
	Grand Total	100%	100%	100%	100%	100%





Maine Department of Corrections 2019 Year End Report

3.4 Facility Transfers Number of Transfers between Facilities

Monthly Transfer information is derived from the transfer screen within CORIS. Transfers are totaled by year and tracked below.

Transfer from Location	Transfer to Location	2015	2016	2017	2018	2019
Bolduc Correctional Facility	DCF	9	1	-	-	-
	MCC	2	1	1	2	1
	MSP	66	89	74	65	66
	MVCF	3	6	7	4	3
Downeast Correctional Facility	BCF	23	3	9	5	-
	MCC	3	-	11	5	-
	MSP	23	18	16	9	-
	MVCF	7	12	10	48	-
Maine Correctional Center	BCF	158	178	185	141	150
	DCF	102	154	42	-	-
	MSP	203	240	328	358	267
	MVCF	185	238	306	288	342
Maine State Prison	BCF	66	69	84	106	90
	DCF	21	22	12	-	-
	MCC	41	34	47	72	49
	MVCF	33	86	81	140	53
Mountain View Correctional Facility	BCF	-	2	18	10	7
	DCF	-	-	9	8	-
	MCC	-	-	12	5	28
	MSP	-	16	59	70	55
Totals		945	1169	1311	1336	1111



Maine Department of Corrections 2019 Year End Report

Return to Higher Custody

Return numbers are for the months of January to December 2019. Transfer to higher custody are listed based on the incident reason connected to the date of transfer. For any transfer that does not have a related incident, the transfer reason is listed towards the bottom of the section for each facility.

		January	February	March	April	May	June	July	August	September	October	November	December	Totals	
BCF	Incident Reason														
	Assault-Client on Client w/out Serious Injury	-	1	-	2	-	-	-	-	-	-	-	-	3	
	Contraband Found - Cell Phone(s)	-	-	-	-	-	-	-	1	2	-	-	-	3	
	Contraband Found - Drugs	2	-	-	-	-	-	-	-	-	-	-	-	2	
	Contraband Found - Medication	-	-	-	-	-	-	-	-	-	1	-	-	1	
	Drug Test - Positive	4	4	1	2	1	4	-	1	7	2	1	-	27	
	Failure to Comply/Program	1	2	-	-	-	-	-	-	-	-	-	-	3	
	Major Disturbance	-	-	1	-	-	-	-	-	-	-	-	-	1	
	Theft	-	-	-	-	-	-	-	-	1	-	-	-	1	
	<i>Below are transfer reasons for those transfers without a related incident</i>														
	Change of Custody Level	1	-	-	1	-	-	1	-	1	-	-	-	4	
	Higher Security	2	3	-	1	-	-	-	1	-	2	1	1	11	
	Medical	1	1	-	2	-	-	-	-	-	-	1	1	6	
	Population Distribution	-	-	-	-	1	-	-	-	-	-	-	-	1	
	Safety	-	-	-	-	-	1	-	-	-	-	-	-	1	
	Security	-	1	-	1	-	-	-	-	1	1	-	-	4	
	Totals	11	12	2	9	2	5	1	3	12	6	3	2	68	
MVCF	Assault-Client on Client w/ Serious Injury	-	-	-	1	-	-	1	-	-	-	-	-	2	
	Assault-Client on Client w/out Serious Injury	1	-	-	-	-	-	-	-	-	-	-	-	1	
	Contraband Found - Cell Phone(s)	1	-	-	-	-	-	-	-	-	-	-	-	1	
	Contraband Found - Drugs	1	-	-	-	2	-	1	1	-	-	1	1	7	
	Damage to Property	-	-	-	-	-	-	-	1	-	-	-	-	1	
	DEI	-	-	-	-	-	1	-	-	-	-	-	-	1	
	Drug Test - Positive	-	-	-	3	-	-	-	-	1	-	-	-	4	
	Failure to Comply/Program	-	-	-	2	1	1	1	-	-	-	1	-	6	
	Major Disturbance	-	-	-	-	-	-	-	-	-	-	-	1	1	
	Staff Assaulted by Client by Throwing Substances	-	-	-	1	-	-	-	-	-	-	-	-	1	
	Suicide Behavior, No Injury	-	-	-	-	-	-	-	-	1	-	-	-	1	
	Tattooing	-	-	-	1	-	-	2	-	-	-	-	-	3	
	Threatening (to client)	-	-	-	-	-	1	-	-	-	-	-	-	1	
	Weapon(s) Involved/Seized	-	-	-	-	-	-	1	-	-	-	-	-	1	
	<i>Below are transfer reasons for those transfers without a related incident</i>														
	Change of Custody Level	-	1	-	-	-	-	-	-	-	-	1	-	2	
	Higher Security	-	-	-	2	-	-	-	-	-	-	-	-	2	
Medical	-	-	-	-	-	-	2	1	-	1	-	-	3		
Population Distribution	-	3	1	2	-	13	6	2	8	3	4	3	45		
Security	-	1	-	-	-	-	-	-	-	-	-	-	1		
Totals	3	5	1	12	3	16	14	5	10	5	6	5	84		



Maine Department of Corrections 2019 Year End Report

3.5 SCCP Cases by Month

“SCCP Community Pop” is the current DOC population participating in the SCCP program. “SCCP Placements” are new placements into the community on SCCP status and “SCCP Violations” are those returning to a secure DOC facility from the community who have violated the conditions of the SCCP program.

	SCCP Placements		SCCP Violations		SCCP Community Pop	
	Male	Female	Male	Female	Male	Female
Jan-18	5	2	2	0	20	7
Feb-18	3	1	1	1	17	5
Mar-18	2	4	0	0	13	9
Apr-18	1	6	1	1	13	8
May-18	3	0	1	2	9	6
Jun-18	5	0	1	0	8	5
Jul-18	2	6	0	0	9	10
Aug-18	5	1	0	0	15	12
Sep-18	7	1	3	1	15	11
Oct-18	2	2	1	2	14	8
Nov-18	1	4	0	0	9	8
Dec-18	2	1	0	1	9	4
Jan-19	4	4	0	1	10	4
Feb-19	5	8	0	0	11	7
Mar-19	0	2	0	0	9	7
April-19	1	4	0	2	4	8
May-19	2	1	0	0	7	6
June-19	4	1	0	0	8	3
July-19	0	3	0	0	8	5
Aug-19	2	0	0	0	6	4
Sep-19	3	2	1	0	4	6
Oct-19	5	1	0	0	8	6
Nov-19	3	2	1	0	9	9
Dec-19	3	7	0	0	10	12

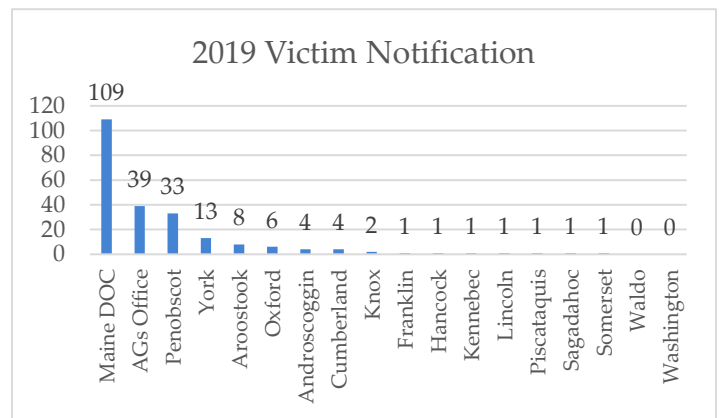
- ❖ 48 (70%) of the 69 clients participating in SCCP during 2019 successfully completed SCCP, resulting in discharge to society (11) or transfer to probation (37).
- ❖ Only 5 (7%) of clients participating in SCCP during 2019 violated their SCCP resulting in a return to incarceration.
- ❖ The other 16 (23%) were still active in SCCP at the end of 2019.



Office of Victim Services

The MDOC OVS is required to ensure that victims who request notice of release receive it according to the Notification of a defendant’s release or escape as outlined in the Maine Criminal Statutes. MDOC polices were formed outlining preferred practice. The Statute requires victims to file a request for notification of the defendant’s release with the office of the attorney for the State or directly to the MDOC. Once Notification of a defendant’s release is filed a victim must receive notice of the defendant’s unconditional release and discharge from institutional confinement upon the expiration of the sentence or upon release from commitment under Title 15, section 101-D or upon discharge under Title 15, section 104-A and must receive notice of any conditional release of the defendant from institutional confinement, including probation, supervised release for sex offenders, parole, furlough, work release, supervised community confinement, home release monitoring or similar program, administrative release or release under Title 15, section 104-A.

In 2019, a total of 225 victims registered for victim notification. The chart to the right indicates which agency assisted the victim in filing the victim notification request with the MDOC. The MDOC OVS assisted in 109 victim notification requests totaling 48.44% of the requests for 2019. Currently, 28% of MDOC clients have a victim notification request associated to their case.



In 2019 the MDOC OVS attempted to make contact with victims requesting notification in 803 MDOC client’s cases resulting in 3349 contacts with victims throughout the year in attempts to ensure rights are met regarding victim notification of a defendant’s release according to statute.

The OVS assists victims who are being harassed by persons in the care or custody of the MDOC with obtaining protection from that harassment. The office assisted 9 victims in 2019.

The OVS assisted in 1 victim centered, victim initiated, Victim-Offender Dialogue.

The OVS attempted contact with victims on 28 furlough cases. This included 81 letters sent to victims whose associated MDOC clients were applying for furloughs in addition to multiple phone contacts in order to provide additional information to the victim pertaining to the furlough requests in hopes to obtain victim input into the furlough investigation process. This resulted in 15 victim responses.

The OVS attempted to contact victims in 43 Supervised Community Confinement applications. 80 letters were sent to victims whose associated MDOC clients were applying for SCCP resulting in 24 responses from the victims providing input into the supervised community confinement process.

The OVS tracked 88 sex offender releases. 137 victims were contacted regarding the sex offender releases. Of those victims notified, the OVS organized and facilitated 18 safety plan meetings for those victims of sexual assault requesting the safety plan meeting.

In May 2019, the OVS hired a new domestic violence victim advocate. Since then, the OVS tracked 189 domestic violence offender releases. 98 victims were contacted regarding the domestic violence offender releases. Of those victims notified, the OVS organized and facilitated 4 safety plan meetings for those victims of domestic violence requesting the safety plan meeting.

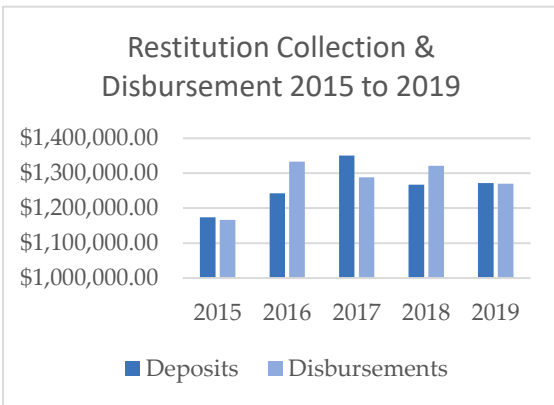
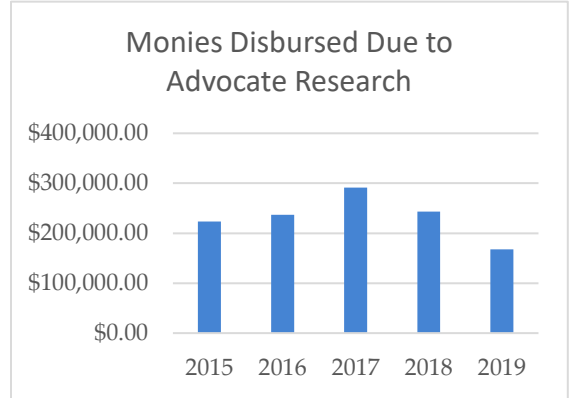


Maine Department of Corrections 2019 Year End Report

The OVS also offers immediate notification to victims who have filed a notification request in cases where an associated MDOC client has applied for a funeral, death bed visit, escaped, or the death of a client. In 2019, there were 95 funeral or death bed visit request resulting in 35 contacts to victims. 11 contacts were made to victims regarding MDOC client deaths.

In 2019 the OVS reviewed 58 media requests resulting in 209 contacts to victims regarding potential media coverage.

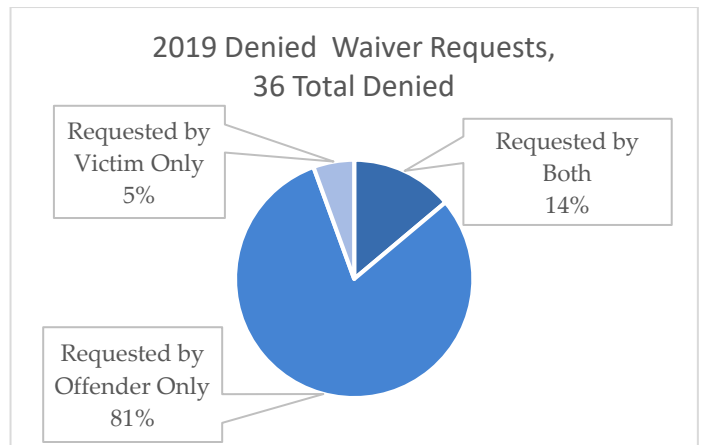
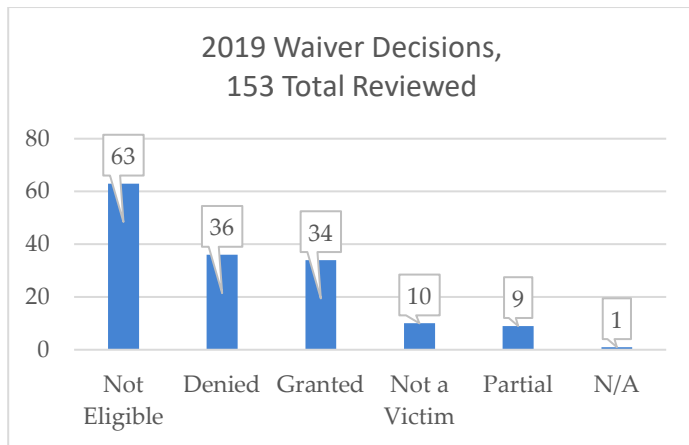
The OVS assisted victims with court ordered restitution in which they are to receive for out of pocket expenses incurred. OVC provided information and resources related to these restitution cases in which the MDOC is responsible for the collection of restitution either through Probation, at the facilities or through the Maine Revenue Service. OVS research assisted the department to release over \$167,706.01 to victims that otherwise could not have been disbursed prior to the research for multiple reasons. The MDOC disbursed \$1,270,265.89 in restitution. In 2019 the victim advocates reviewed 1908 client's restitution cases which included 3293 contacts with



victims, collateral contacts researching the case, and connecting with the Court and District Attorney's Office staff in order to assist crime victims. The OVS also provides guidance as needed to Probation and facilities regarding restitution issues that arise. Assistance is also provided to the Courts and District Attorney's Office in order to coordinate requested Orders to Enforce to be filed on inactive MDOC dockets.

The OVS assisted in the revision and implementation of policy 6.3, Contact with Victims. The OVS continued to assist MDOC staff at MDOC facilities providing ongoing support regarding the Contact with Victims policy.

According to policy 6.3, Contact with Victims, waiver requests for contact are reviewed and approved by the Commissioner, or designee. The Director of Victim Services reviews all waiver requests as the Commissioner's designee. In 2019, 153 waiver requests were researched in the OVS and reviewed. The charts below outline the waiver decisions from 2019. Some cases required multiple waiver reviews. For purposes of the charts below, a client who requested contact with each individual victim multiple times was counted as only 1 review. The decisions included 36 waiver denial decisions. Of those 36 waivers, 29 cases or 80.56% did not include requests from the victim and is a factor usually forgotten by many but is of utmost importance to victim services.





Maine Department of Corrections 2019 Year End Report

The OVS is responsible for the certification of the Batterer Intervention Programs in the State of Maine. In 2020 the Batterer Intervention Program Annual report and statistics will be provided to the Legislature containing information regarding the 2019 monitoring, certification, and the number of clients required to attend the Certified Batterer Intervention Programs “CBIP” in the Communities as a condition of Probation. The OVS worked in collaboration with the Maine Coalition to End Domestic Violence, who monitored all of the CBIP across the State to ensure compliance with the standards.

OVS participates in several statewide stakeholder commissions, panels, and other memberships in order to be a voice for victims and an information source regarding the rights of victims. Additionally, presentations are made regularly in order to promote victim services and educate the MDOC and other stakeholders regarding victims’ rights and statutes, the victim services offered at the MDOC, and policies and procedures pertaining to such.

The OVS is committed to assisting crime victims and assuring their rights are met, information and resources are provided as appropriate. For further information please don’t hesitate to contact us at 800-968-6909.



Maine Department of Corrections 2019 Year End Report

*This page left intentionally blank.



Maine Department of Corrections
Correctional Programming Division
25 Tyson Drive
Augusta, ME 04330
Phone (207) 287-2711
Fax (207) 287-4370
<http://www.maine.gov/corrections>

The mission of the Department of Corrections is to reduce the likelihood that juvenile and adult offenders will re-offend, by providing practices, programs and services which are evidence-based, and which hold the offenders accountable.